

OPERATOR'S MANUAL

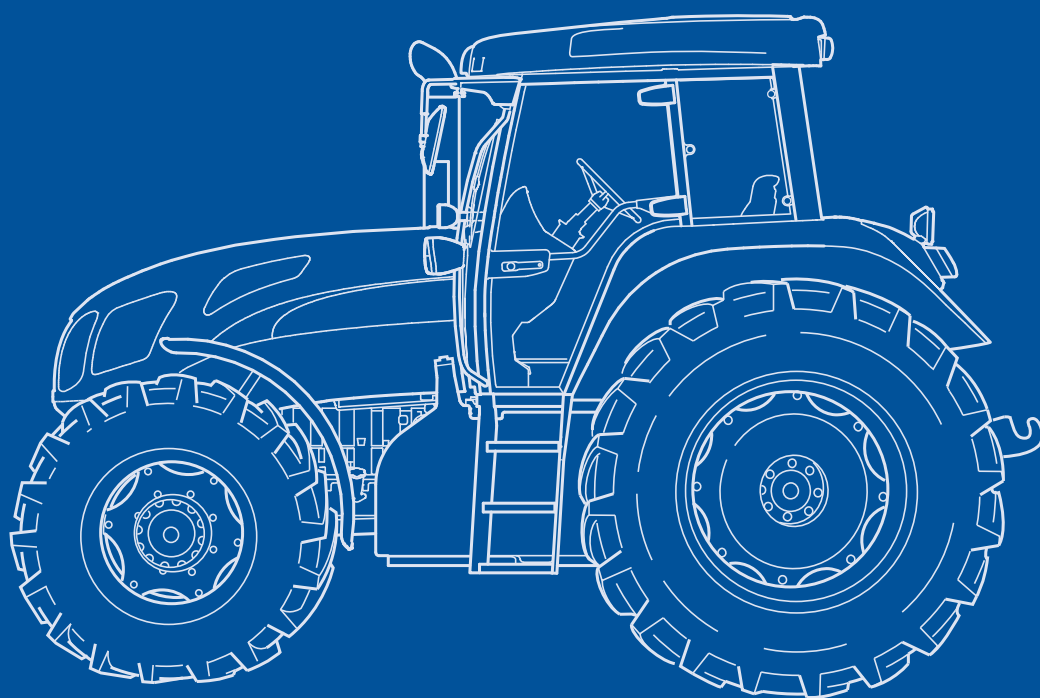
T7510

T7520

T7530

T7540

T7550



Print No. 84137954

2nd edition
English 07/08

 **NEW HOLLAND**
AGRICULTURE

OPERATOR'S MANUAL

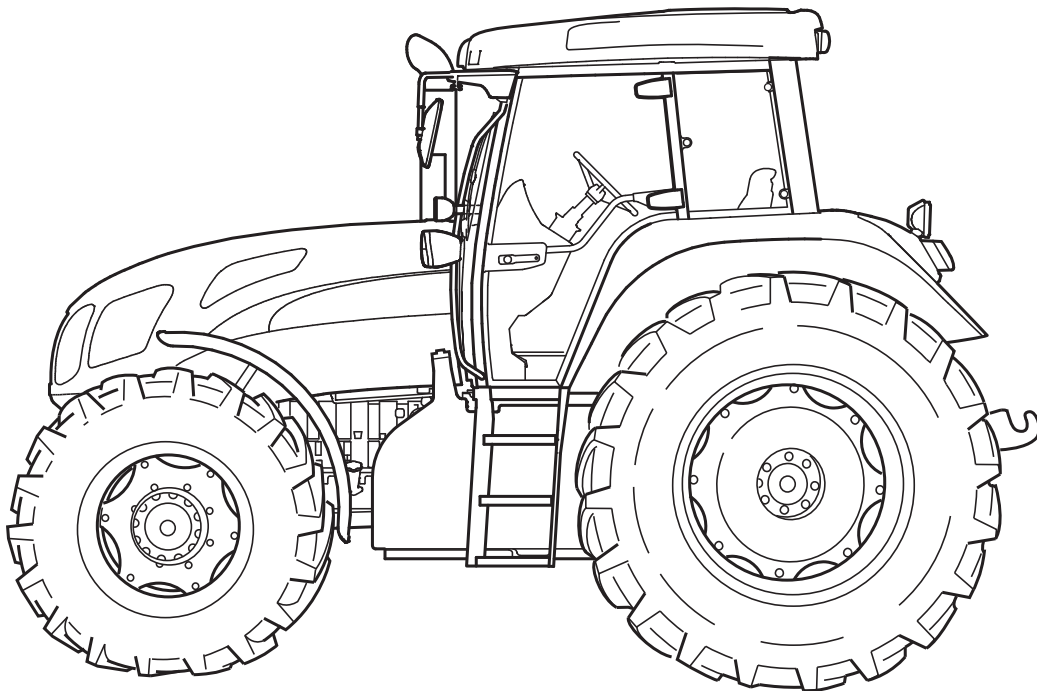
T7510

T7520

T7530

T7540

T7550



Print No. 84137954

2nd edition

English 07/08



OVERVIEW OF THE SECTIONS

- 1 - General information and safety**
- 2 - Control, instruments and operation**
- 3 - Field operation**
- 4 - Lubrication and maintenance**
- 5 - Electrical system**
- 6 - Long period of non-use of the tractor**
- 7 - Reversing facility/BiDrive**
- 8 - Tractor specification**
- 9 - Index**



COLOUR SCHEME	
COLOUR	COLOUR CODE
BLACK	M-1724-P
DARK GREY	RAL - 7024
GREY	RAL - 7015
WHITE	TA/21
NEW HOLLAND BLUE	86593620

Electromagnetic compatibility (EMC)

This tractor fulfils EC Directives governing electromagnetic radiation.

However, interference can also be caused by auxiliary devices, which may not correspond to the standard regulations.

Because electromagnetic interference can seriously affect the function of the vehicle and/or give rise to dangerous situations, you **MUST** observe the following instructions:

- Ensure that all equipment from third-party manufacturers fitted on the tractor carries the CE mark.



- The maximum output level of equipment that emits radiation (radios, telephones, etc.) must not exceed the limits prescribed in the country in which you are operating the tractor.
- The electromagnetic field created by auxiliary equipment must never exceed 24V/m in proximity to electronic components.

Disregard of these regulations immediately invalidates the New Holland warranty.

TABLE OF CONTENTS

OVERVIEW OF THE SECTIONS	1-2
--------------------------------	-----

SECTION

GENERAL INFORMATION AND SAFETY

PRODUCT IDENTIFICATION NUMBERS AND SERIAL NUMBERS	1-5
SAFETY	1-8
INTENDED APPLICATION	1-9
RULES FOR GENERAL SAFETY AND FOR ACCIDENT PREVENTION	1-9
TRANSPORTING PEOPLE	1-9
DRIVING OPERATION	1-10
LEAVING THE TRACTOR	1-10
MOUNTED EQUIPMENT	1-10
OPERATING THE PTO	1-10
MAINTENANCE AND OTHER WORK	1-11
HAZARDOUS CHEMICALS	1-11
BASIC RULE	1-11
SAFETY PANELS	1-12

SECTION 2

CONTROLS, INSTRUMENTS AND OPERATION

BOARDING THE TRACTOR	2-2
DRIVER'S SEAT	2-3
PROGRAMMING THE DISPLAYS	2-22
CONTROL ELEMENTS	2-24
BEFORE STARTING THE ENGINE	2-43
DRIVER PRESENCE SWITCH	2-43
BATTERY ISOLATOR (if fitted)	2-44
STARTING PROCESS	2-45
TRACTOR OPERATION AT LOW TEMPERATURES (WINTER OPERATION)	2-47
DRIVING STRATEGIES	2-48
STOPPING AND PARKING THE TRACTOR	2-50
STATIONARY CONTROL	2-51
PARK LOCK	2-51
DRIVING CONSIDERATIONS	2-52
TRANSMISSION ACTUATION	2-54
CAB VENTILATION / HEATING	2-63
HEIGHT ADJUSTABLE TRAILER HITCHES (if fitted)	2-66
SWINGING DRAWBAR	2-69
AUTO PICK UP HITCH WITH HOOK hydraulically extendable (if fitted)	2-73
LUG DIMENSIONS FOR TRAILER/IMPLEMENT MOUNTING	2-77
CABLE COUPLINGS FOR TRAILER BRAKE(if fitted)	2-78
AUXILIARY ELECTRICAL CONNECTOR	2-80
WARNING LIGHTS	2-85
TOWING	2-87
TRANSPORTING THE TRACTOR	2-88

**SECTION 3
FIELD OPERATION**

REAR PTO	3-2
OPERATING THE FRONT PTO (if fitted)	3-11
PREPARING THE REAR THREE POINT LINKAGE	3-12
OPERATING THE ELECTRONIC EDC LIFTING EQUIPMENT CONTROL	3-22
PREPARING THE FRONT POWER LIFT (if fitted)	3-30
WORKING WITH THE FRONT POWER LIFT	3-31
HTS FIELD END MANAGEMENT	3-35
REMOTE VALVES	3-39
OPERATING THE REMOTE VALVES	3-44
DIFFERENTIAL LOCK/Terralock	3-50
OPERATING FOUR-WHEEL DRIVE	3-52
OPERATING TERRAGLIDE FRONT AXLE (if fitted)	3-53
MOUNTING BRACKET FOR EXTERNAL LEVERS	3-54
SETTING THE FRONT AXLE AND THE FRONT AXLE TRACK WIDTH	3-57
SETTING THE FRONT AXLE TRACK WIDTHS	3-58
SETTING THE REAR AXLE TRACK WIDTH	3-60
ALL-WHEEL TYRE COMBINATIONS	3-64
FRONT WHEEL MUDGUARD - ALL-WHEEL TRACTOR (if fitted)	3-66
TRACTOR BALLAST	3-67

**SECTION 4
LUBRICATON AND MAINTENANCE**

ENVIRONMENTAL ISSUES	4-2
PLASTICS AND GLASS FIBRE REINFORCED PARTS	4-2
TOOLBOX	4-2
OPERATING HOURS RECORDER	4-3
BONNET	4-4
LUBRICANTS AND FILL VOLUMES	4-5
DAILY CHECKS	4-12
ENGINE MAINTENANCE	4-17
AUTOCOMMAND MAINTENANCE	4-27
MAINTENANCE OF HYDRAULIC UNIT	4-30
MAINTENANCE OF STEERING UNIT	4-31
MAINTENANCE OF FRONT AXLE	4-32
BRAKE MAINTENANCE	4-35
MAINTENANCE OF TRAILER HITCH	4-36
ELECTRICAL MAINTENANCE	4-37
MAINTENANCE OF FRONT PTO SHAFT	4-38
MAINTENANCE OF FRONT HYDRAULICS	4-39
GENERAL MAINTENANCE	4-40

**SECTION 5
ELECTRICAL SYSTEM**

BATTERY 5-2
Bulbs and lights 5-5
FUSES and RELAYS 5-11

**SECTION 6
LONG PERIOD OF NON-USE OF THE TRACTOR**

**SECTION 7
REVERSING UNIT / BiDrive**

7-1

BiDrive/REVERSIBLE SEAT/REVERSING UNIT 7-2

**SECTION 8
TRACTOR SPECIFICATION**

ENGINE 8-2
ELECTRICAL SYSTEM 8-4
GENERAL MACHINE DATA 8-5
VEHICLE WEIGHTS 8-9
VEHICLE DIMENSIONS 8-10

**SECTION 9
INDEX**

SECTION 1

GENERAL INFORMATION AND SAFETY

TO THE OWNER

GENERAL NOTES

This manual was put together to help you to run in, drive, operate and maintain your new tractor the right way. Please read this manual carefully. This tractor is intended for normal, traditional agricultural use.

If you require information about the tractor, please contact your dealer. He will have specially trained staff, original spare parts and the necessary tools to carry out maintenance and repair work on your tractor.

Your tractor was designed and built to give maximum performance, economy and ease of operation under very different operating conditions. Before delivery, the tractor was carefully tested in the factory and also at the dealership to make sure that you receive the vehicle in the optimum operating condition. To maintain this condition and to ensure trouble-free operation, it is important that the routine maintenance (see section 4 of the manual) is carried out at the recommended intervals.

CLEANING THE TRACTOR

Your tractor is a state-of-the-art machine with sophisticated electronic controls. This should be borne in mind when cleaning the tractor, particularly if using a high pressure cleaner. Even though every precaution has been taken to protect electronic components and connections, the pressure generated by some of these machines is such that complete protection against water ingress cannot be guaranteed.

When using a high-pressure cleaner, do not stand too close to the tractor and avoid directing the jet at electronic components, electrical connections, seals, filler caps, etc. Never direct a jet of cold water at a hot engine or exhaust.

SAFETY

Pages 1-7 to 1-11 inclusive contain the precautions which must be taken to ensure your own safety and that of others. Read the safety precautions and observe the advice given **before** operating the tractor.

MAINTENANCE PARTS

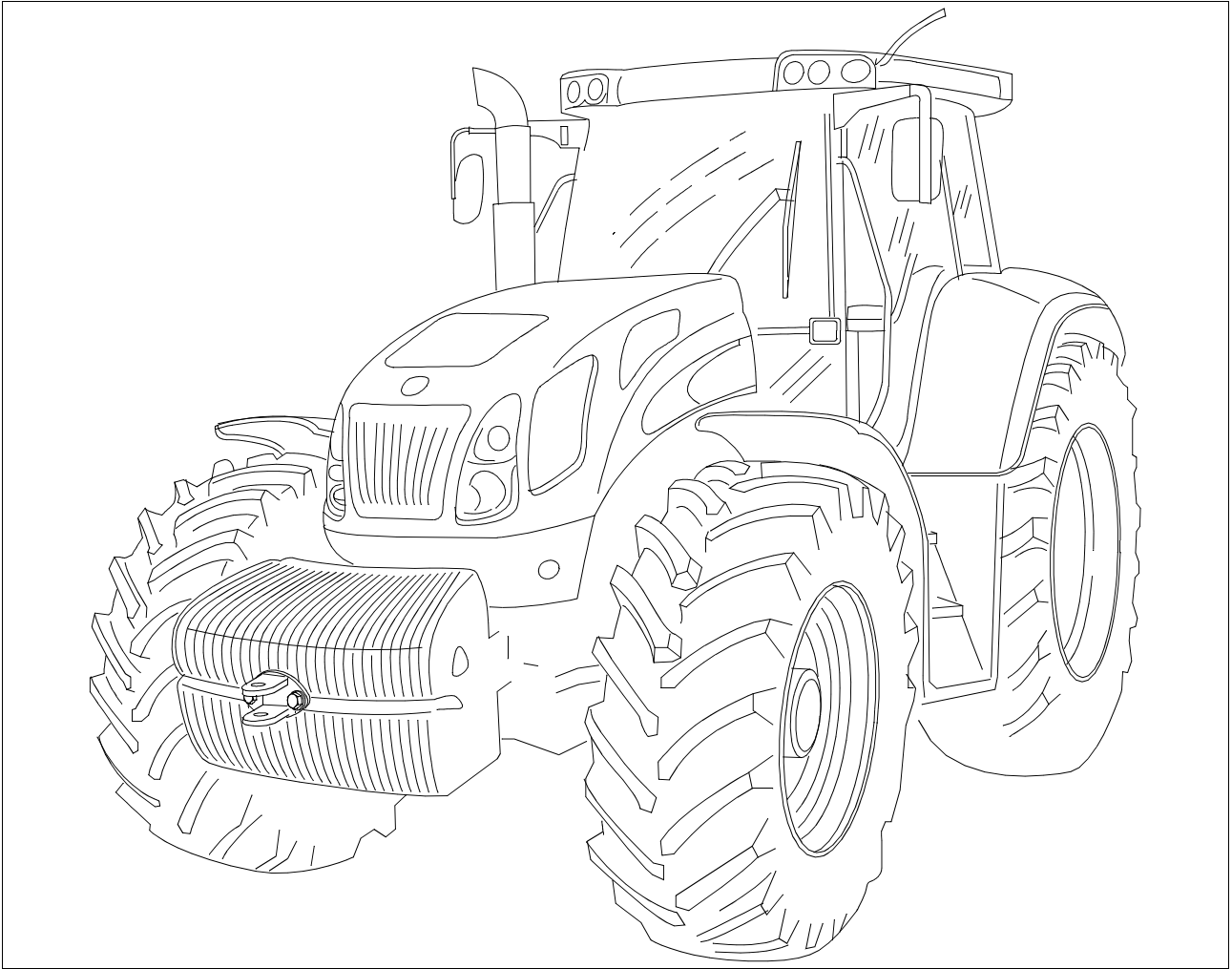
We emphasise the point that genuine spare parts are checked and approved by the company. If you do not use genuine spare parts, this could have negative effects on the design features of your tractor and could therefore affect safety. The company accepts no liability for damage caused by the use of non-genuine parts and accessories. Only genuine spare parts from New Holland should be used. If genuine parts are not used, relevant, legal approvals could be cancelled.

It is forbidden to carry out any modifications to the tractor without the written permission of the company's Customer Service Department.

WARRANTY

The warranty for your tractor is based upon the warranty legislation of your country and the contractual relationship with the dealer. However, the warranty shall expire if the tractor is not used, set up or maintained according to the instructions in the operating manual.

NEW HOLLAND T7550 TRACTOR



SC04A082

Dealer's stamp



Manufacturer:

CNH Österreich GmbH
Steyrerstrasse 32
A-4300 St. Valentin
AUSTRIA



How to use this manual

Read the manual before starting to use your tractor. Consult your dealer if you require any further information.

This manual contains important information about how to work safely with your New Holland tractor, and about how to set it up and maintain it for reliable operation. To make this information easy for you to find, this manual is sub-divided into separate chapters, as shown in the table of contents. The information about this tractor is divided into four chapters :

1. INSTRUMENTS AND OPERATING CONTROLS - This illustrates the layout of all the operating controls.
2. WORKING INSTRUCTIONS - General tips for daily work with the tractor, e.g. starting/ stopping the tractor, operation of the transmission, etc.
3. FIELD WORK - This chapter contains tips about various working applications, specifically involving the use of equipment, e.g. three-point linkage, rear PTO shaft, etc.
4. TYRES/WHEELS/TRACK WIDTHS/BALLASTING - This section lists settings for various different tractor applications, e.g. tyre pressures, track widths, etc.

Maintenance for this tractor is divided into two chapters:

1. LUBRICATION/MAINTENANCE - Regular maintenance intervals.
2. ELECTRICAL SYSTEM - General maintenance instructions for the electrical system.

IMPORTANT: *To find specific points about your vehicle in this manual, please refer to the alphabetically arranged index at the back of the manual.*

Positional indications, e.g. front, back, right and left, are as viewed by someone on the driving seat looking in the direction of travel.

Do NOT permit yourself or anyone else to drive this vehicle or carry out maintenance work on it until you or that other person has read this manual. Only employ experienced drivers who have demonstrated their ability to work with and maintain this vehicle properly and safely.

This tractor with its standard equipment and permitted auxiliary equipment is intended for use in agricultural applications and the like.

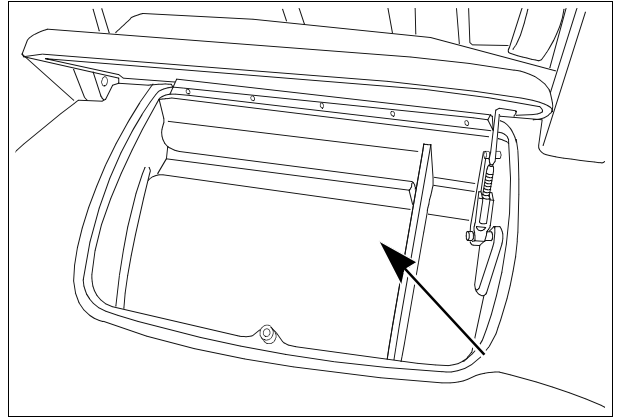
This vehicle is NOT to be used for any applications or purposes other than those described in this manual. Contact an authorised dealer about any modifications, additions or conversion work which may be required to enable your vehicle to comply with your national directives and safety requirements. The consent or official approval of the manufacturer is required for any specialist add-on structural components. Product liability will be declined if any unauthorised modifications are made.

Keeping this manual safe

Store this operator's manual in the glovebox provided in your tractor.

Ensure that this manual remains complete and in good condition.

Ask your dealer for additional copies of the manual, or for any other information or support you require for your vehicle. Your dealer employs highly trained technical specialists who are familiar with the best method for repairing and maintaining your vehicle.



SC06K059

IMPORTANT: *This operator's manual is a part of your tractor. If the tractor is sold, lent or hired out, the operator's manual MUST be handed over with it.*

PRODUCT IDENTIFICATION NUMBERS AND SERIAL NUMBERS

Enter the type designation for the vehicle, the Product Identification Number (P.I.N.) and serial numbers below in their corresponding lines. When ordering components or requesting information, you may need to quote this numerical data to the New Holland dealer.

Keep a written record of these identification numbers. Store these data records and the vehicle licensing documentation in a safe place. If the vehicle is ever stolen, notify the local police of these identification details.

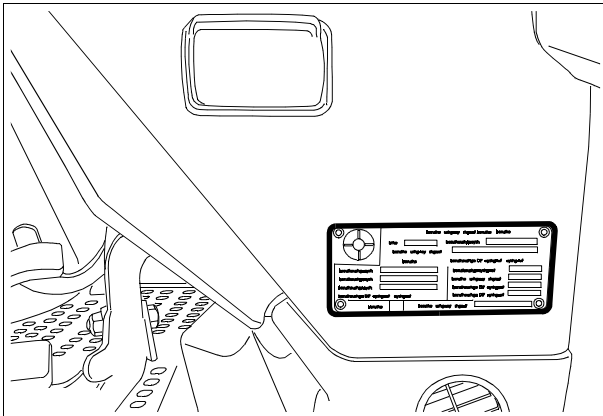
Details on the rating plate

CNH EUROPA HOLDING SA		Made in AUSTRIA
	TYPE: SE	VAR. SC.....
	EC-NUMBER: e1 * 2003/37 * 0277	
	IDENTIFICATION NO.: *Z8SC01170*	
TRACTOR:		TRAILER / TOWED MACHINE
TOTAL PERMISSIBLE MASS: 11380 - 11500 kg		UNBRAKED TOWABLE MASS: 3000 kg
PERMISSIBLE FRONT AXLE LOAD: 4480 - 5000 kg		INDEPENDENTLY - BRAKED 6000 kg
PERMISSIBLE REAR AXLE LOAD: 6490 - 9000 kg		INTERIA - BRAKED: 8000 kg
ABS COEFF.:		ASSISTED BRAKE: 32000 kg
		T7540

SD08E042

Arrangement of individual numbers

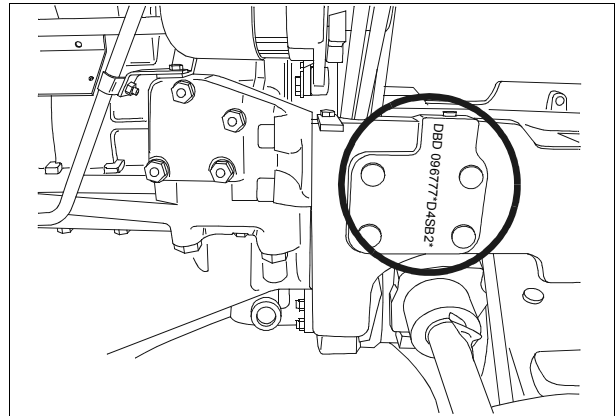
TRACTOR



Type designation _____

Product Identification Number _____

TRACTOR



Type designation _____

Product Identification Number _____

Thank you so much for reading.
Please click the “Buy Now!”
button below to download the
complete manual.



After you pay.

You can download the most
perfect and complete manual in
the world immediately.

Our support email:

ebooklibonline@outlook.com