

# Contents

---

## 1 GENERAL INFORMATION

Note to the owner.....	1-1
Identification of the engine .....	1-3
Nameplate .....	1-3
Identification valve .....	1-4
Ecology and the environment .....	1-5
Noise levels.....	1-6
Before operating the machine .....	1-7
International symbols .....	1-9

## 2 SAFETY INFORMATION

Safety precautions.....	2-1
Shielding offered by the tractor .....	2-2
Roll over protective structure (ROPS) .....	2-4
Safety decals .....	2-5
Before operating the machine .....	2-12
Driving the vehicle .....	2-13
Machine operation.....	2-15
Operation of Power Take-Off (PTO) .....	2-17
Safe maintenance .....	2-18
Diesel fuel .....	2-20
Fire or explosion prevention .....	2-21
Intended use statement .....	2-22

## 3 CONTROLS AND INSTRUMENTS

### ACCESS TO OPERATOR'S PLATFORM

General check .....	3-1
Introduction .....	3-2
Rear view mirrors.....	3-2
Overview of platform .....	3-3

### OPERATOR'S SEAT

Operator seat.....	3-4
Seat belt .....	3-5

### FORWARD CONTROLS

Controls front .....	3-6
Ignition switch .....	3-7
Working lights – Switch .....	3-7
Tractor warning lamps.....	3-7
Driving lights and horn .....	3-8
Clutch – Pedal .....	3-8
Throttle - Pedal .....	3-9
Service brakes.....	3-9
Throttle by hand .....	3-9
Controls valve .....	3-10

---

## LEFT-HAND SIDE CONTROLS

Left hand side controls .....	3-11
-------------------------------	------

## RIGHT-HAND SIDE CONTROLS

Park brake .....	3-12
Hydraulic controls .....	3-12

## INSTRUMENT CLUSTER

Warning lights and indicators .....	3-14
Gauges .....	3-15

## 4 OPERATING INSTRUCTIONS

### COMMISSIONING THE UNIT

General instructions .....	4-1
Filling the fuel tank .....	4-2

### STARTING THE UNIT

Starting the engine .....	4-3
Booster battery procedure .....	4-4

### STOPPING THE UNIT

Stopping the engine .....	4-5
---------------------------	-----

## 5 TRANSPORT OPERATIONS

### PREPARING FOR ROAD TRANSPORT

CARRYING THE TRACTOR ON A TRANSPORTER .....	5-1
---	-----

### RECOVERY TRANSPORT

Towing the machine .....	5-1
--------------------------	-----

## 6 WORKING OPERATIONS

### GENERAL INFORMATION

Traction front wheel drive (FWD) .....	6-1
Differential lock system .....	6-2

### TRANSMISSION

Transmission operation 8x2 .....	6-3
Travel speeds .....	6-4
Informational decals valve .....	6-5
Inching pedal and throttle .....	6-7

---

Throttle by hand .....	6-7
------------------------	-----

## REAR POWER TAKE-OFF

Operating precautions .....	6-8
Power Take-Off (PTO) operation .....	6-8
Operating speeds of the Power Take-Off (PTO) .....	6-10

## REAR HITCH

Hydraulics .....	6-11
Operation of the hydraulic system .....	6-11
Hydraulic systems - Program - Use of hydraulic system levers .....	6-14

## HYDRAULIC REMOTE CONTROL VALVES

Operation with remote valves .....	6-16
------------------------------------	------

## THREE POINT HITCH

Attach the implement on the hydraulic lift .....	6-17
Setups of the three-point hydraulic lift .....	6-19

## DRAWBARS AND TOWING ATTACHMENTS

Attaching a trailer .....	6-22
Tractor drawbar .....	6-23

## WHEEL TRACK ADJUSTMENT

Adjustments of the front tread - Version without Auxiliary Front Wheel Drive (AFWD) .....	6-24
Adjustments of the front tread - Version with Auxiliary Front Wheel Drive (AFWD) .....	6-26
Front wheel alignment .....	6-29
Adjustments the rear tread .....	6-30

## BALLASTING AND TIRES

Tyres .....	6-33
Tyres - Inflation .....	6-34
Tyres - Acceptable pressures and loads .....	6-35
Tires recommended .....	6-38
Tyres and ballasting .....	6-38
Ballasting - Limits .....	6-40
Ballasting solid .....	6-41
Liquid ballast .....	6-42

## 7 MAINTENANCE

### GENERAL INFORMATION

Introduction .....	7-1
Diesel fuel .....	7-2
Biodiesel fuel - Biodiesel fuel .....	7-3

---

General instructions from the machine .....	7-5
Protective devices .....	7-6
Fluids and lubricants .....	7-8

## MAINTENANCE CHART

Maintenance chart.....	7-9
------------------------	-----

## WHEN THE WARNING LAMP LIGHTS

Cleaning the air filter .....	7-11
-------------------------------	------

## EVERY 10 HOURS OR EACH DAY

Checking the engine oil level .....	7-13
Engine coolant level .....	7-14
Hydraulic oil reservoir of the steering - Check .....	7-14
Fuel system water separator - Drain .....	7-15
Fuel filter – Drainage of water .....	7-15
Battery check .....	7-16
Cleaning the radiator grids .....	7-16

## FIRST 50 HOURS

First 50 Hour Service .....	7-18
-----------------------------	------

## EVERY 50 HOURS

Clutch.....	7-19
Service brakes - adjust .....	7-20
Wheels - Check.....	7-20
Engine fan belt - Adjustment .....	7-20
Lubrication points.....	7-21
Lubrication points - Version without auxiliary front wheel drive - AFWD .....	7-24

## EVERY 300 HOURS

Fuel filter - Replacement .....	7-26
Fuel transfer pump - Cleaning .....	7-26
Hydraulic oil filter of the steering - Cleaning .....	7-27
Change engine oil and filter .....	7-27
Engine crankcase breather filter - Cleaning .....	7-29
Hydraulic oil level.....	7-29
Hydraulic oil filter - Replace .....	7-30
Front axle differential and hubs - Check the oil level .....	7-30
Wheel hub - Change fluid .....	7-30

## EVERY 1200 HOURS OR ANNUALLY

Transmission oil - Replace .....	7-31
Radiator drain and flush .....	7-32
Hydraulic steering oil reservoir - Change fluid.....	7-33
Hydraulic oil front differential - Replace .....	7-33
Fuel tank - Cleaning .....	7-34

---

Engine valve clearance - Check .....	7-34
Air filter engine - Replace .....	7-35
Front axle drive shaft - Check .....	7-36
Fuel injectors - Check .....	7-36

## GENERAL MAINTENANCE

Engine air filter system - Cleaning the discharge valve .....	7-37
Fuel system - Bleed .....	7-37
Battery - Check .....	7-39
Fuses and Relays .....	7-40
Work lights and lights - Adjustment .....	7-41
Lamps - Replace .....	7-42
Shielding the electronic and electrical systems during battery charging or welding ..	7-43

## STORAGE

Tractor storage .....	7-44
Preparation for use after Storage.....	7-45

## 8 TROUBLESHOOTING

### SYMPTOM(S)

Engine .....	8-1
Hydraulics .....	8-2
Three-point hitch .....	8-2
Electrical system .....	8-3

## 9 SPECIFICATIONS

General dimensions .....	9-1
Fluids and lubricants .....	9-3
Engine .....	9-4
Transmission .....	9-4
Hydraulic System.....	9-4
Brakes .....	9-5
Electrical system .....	9-5

# 1 - GENERAL INFORMATION

## Note to the owner

### General Information

This Manual has been prepared to assist you in the correct procedure for running- in, driving and operating and for the maintenance of your new tractor. Read this Manual carefully. Your tractor is intended for use in normal and customary agricultural applications.

If you require advice concerning your tractor at any time, do not hesitate to contact your NEW HOLLAND dealer. He has factory trained personnel, genuine manufacturers' parts and the necessary equipment to carry out all your service requirements.

The specification are provided for your information and guidance. For further information concerning your tractor and equipment, see your NEW HOLLAND dealer.

All data given in this manual is subject to production variations. Dimensions and weights are approximate. The illustrations do not necessarily show tractors in standard condition or imply that these features are available in all countries. For more precise information about a specific tractor, consult your NEW HOLLAND dealer.

Your tractor has been designed and built to give maximum performance, economy and ease of operation under a wide variety of operating conditions. Prior to delivery, the tractor was carefully inspected, both at the factory and by your dealer to ensure that it reaches you in optimum condition. To keep it in this condition and guarantee that its operation is problem-free, it is important that routine service procedures, as specified in the maintenance table on page 7-9, are carried out at the recommended intervals.

### Operator's manual storage

The Operators Manual supplied with your tractor is an important source of information and should be stored safely.

The manual is written specifically for your tractor so it is important that you make a note of the print number and issue date which can be found on the cover. In the event the manual is lost or damaged it can be replaced with the correct version.

### About this manual

This manual gives information for use of your machine, as intended and under the conditions foreseen by the manufacturer during normal operation and routine service and maintenance.

Read and understand it; keep it in good condition and always keep it in a safe place.

This manual does not contain all the information related to periodical service, converting and repairs to be carried out by NEW HOLLAND professional service personnel.

The Table of Contents page(s) are provided to have an overview of main manual's topics. A detailed alphabetic index is available at the end of this manual for locating specific items.

When reading this manual, you will find the term AFWD, which is an abbreviation for Auxiliary Front Wheel Drive.

### Normal operation

- Normal operation means the use of the tractor for the purpose intended by the manufacturer by an operator familiar with the tractor and the mounted or towed equipment and complying with the information for operation and safe practices, as specified by the manufacturer in this manual and by the decals on the tractor and the equipment.
- Normal operation includes the preparation and storage of the tractor, swinging components into work position and vice versa, adding or removing ballast and picking up and setting off attachments.
- Normal operation includes the adjustment and setting of the tractor and equipment, for the specific condition of the field and/ or the crop.

### Routine service

- Routine service and maintenance means activities that must be done daily by an operator familiar with the tractor characteristics and complying with the information for routine service and safe practices, as specified by the manufacturer in this manual and by decals on the tractor, in order to maintain its proper function. The routine service includes activities such as filling up, cleaning, washing, topping up fluid, applying grease, and replacing consumable items such as bulbs.

### Converting, periodical service and repair

- Periodical service means activities that must be done at defined intervals by trained personnel familiar with the tractor characteristics and which are complying with the information for periodical service and safe practices, as partly specified by the manufacturer in this manual and in other Company literature, in order to maintain the expected life time of the tractor.
- Converting means activities that must be done by professional service personnel familiar with the tractor characteristics and complying with the information for converting, as partly specified by the manufacturer in this manual, in assembly instructions or in other Com-

pany literature, in order to fit the tractor to a specific configuration.

- Repair means activities that must be done by professional service personnel only familiar with the tractor characteristics and complying with the information for repair, as specified by the manufacturer in the dealer's workshop manual, in order to restore the proper function of the tractor after a failure or degradation of performance.

### Cleaning the tractor

When using a high-pressure washer, do not stand close to the tractor and avoid directing the jet at the electrical components, electrical connections, breathers, seals, filling nozzles, etc. Never direct a jet of cold water at a hot engine or exhaust.

Failure to comply with these rules will render the warranty null and void.

### Safety

The pages in Section 2 list the precautions to be observed to ensure your safety and the safety of others. Read the safety precautions and follow the advice offered before operating the tractor.

### Servicing after the first 50 hours

On page **7-18** you will find the operations that need to be performed after the first 50 hours of service.

This service should be performed by your NEW HOLLAND dealer.

**NOTICE:** *It is important that the **50 h** service is carried out in line with the recommendation to guarantee that the tractor is providing optimal performance and efficiency.*

### Spare parts

It should be pointed out that genuine parts have been examined and approved by the Company. The installation and/or usage of 'non-genuine' products could have negative effects upon the design characteristics of your tractor and thereby affect its safety. The Company is not liable for any damage caused by the use of 'non-genuine' parts and accessories. Only genuine replacement parts should be used. The use of non-genuine parts may invalidate legal approvals associated with this product.

It is prohibited to carry out any modifications to the tractor unless specifically authorised, in writing, by the After Sales Service department of the Company.

### Warranty coverage

Your tractor is warranted according to legal rights in your country and the contractual agreement with the selling dealer. No warranty shall, however, apply if the tractor has not been used, adjusted and maintained according to the instructions given in the Operator's Manual.

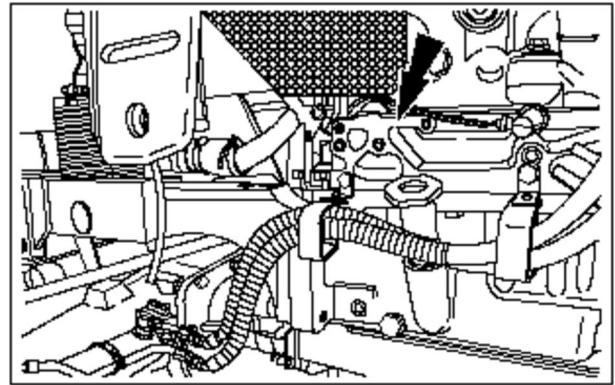
### Using Biodiesel

**NOTICE:** *Before using Biodiesel fuels in your tractor, refer to the information on page **7-2** regarding the storage and use of Bio diesel fuels.*

## Identification of the engine

The engine identification is engraved on the right-hand side of the engine block. Note down the number here:

Engine Serial No.: \_\_\_\_\_

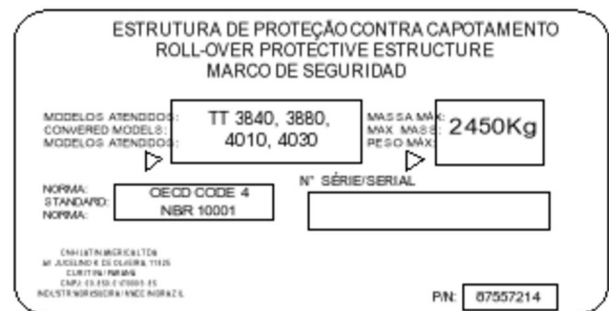


BRAG12TRLUE1095 1

## Nameplate

The identification is on the nameplate attached to the Roll Over Protection Structure (ROPS):

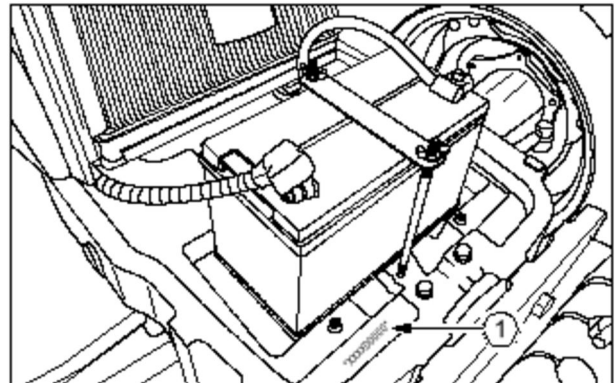
Serial no.: \_\_\_\_\_



87557214 1

The serial number identification is engraved on the support cradle of the front axle, on the right-hand side and to the front. Note down that identification here.

Chassis no.: \_\_\_\_\_

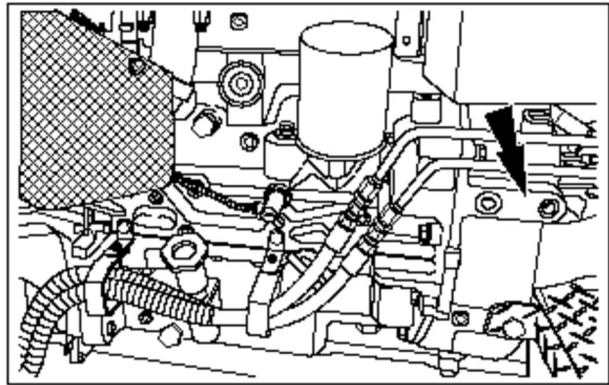


BRAG12TRLUE1121 2

## Identification valve

The serial number is engraved on the left-hand side of the transmission housing, below the fuel tank. Note down the number here:

Transmission serial number: \_\_\_\_\_



BRAG12TRLUE1093 1

## Ecology and the environment

Soil, air, and water are vital factors of agriculture and life in general. Where legislation does not yet rule the treatment of some of the substances which are required by advanced technology, common sense should govern the use and disposal of products of a chemical and petrochemical nature.

The following are recommendations which may be of assistance:

- Become acquainted with and ensure that you understand the relative legislation applicable to your country.
- Where no legislation exists, obtain information from suppliers of oils, filters, batteries, fuels, antifreeze, cleaning agents, etc., with regard to their effect on man and nature and how to safely store, use and dispose of these substances. Agricultural consultants will, in many cases, be able to help you as well.

### Helpful Hints

- Avoid filling tanks using unsuitable containers or inappropriate pressurized fuel delivery systems that may cause spillages.
- If you are exposed to or come in contact with hazardous chemicals you can be seriously injured. The fluids, lubricants, paints, adhesives, coolant, etc. required for the function of your machine can be hazardous. They may be attractive and harmful to domestic animals, as well as humans.
- Dispose of all fluids, filters, and containers in an environmentally-safe manner and according to local laws and regulations. Check with local environmental and recycling centers or your dealer for correct disposal information. Store fluids and filter in accordance with local laws and regulations. Use only appropriate containers for the storage of chemicals or petrochemical substances.
- Modern oils contain additives. Do not burn contaminated fuels and/ or waste oils in ordinary heating systems.
- Avoid spillage when draining off used engine coolant mixtures, engine, gear box and hydraulic oils, brake fluids, etc. Do not mix drained brake fluids or fuels with lubricants. Store them safely until they can be disposed of in a proper way to comply with local legislation and available resources.
- Modern coolant mixtures, i.e., antifreeze and other additives, should be replaced every two years. They should not be allowed to get into the soil but should be collected and disposed of safely.
- The air-conditioning system contains gases that are harmful to the environment when released into the atmosphere. Do not attempt to service or repair the system. Your dealer or air conditioning specialist has a special extractor for this purpose and will be able to recharge the system in any case.
- Repair any leaks or defects in the engine cooling or hydraulic system immediately.
- Do not increase the pressure in a pressurized circuit as this could cause the components to explode.
- Protect hoses during welding as penetrating weld splatter may burn a hole or weaken them, causing the loss of oils, coolant, etc.
- Keep out of reach of children or other unauthorized persons. Additional precautions are required for applied chemicals. Obtain complete information from the manufacturer or distributor of the chemicals before you use them.

## Noise levels

### CAUTION

**Avoid possible hearing loss!**  
**The machine operator must wear hearing protection.**  
**Failure to comply could result in minor or moderate injury.**

C0070A

### WARNING

**Personal Protective Equipment (PPE) required.**  
**When assembling, operating, or servicing the machine, wear protective clothing and PPE necessary for the particular procedure. Some PPE that may be necessary includes protective shoes, eye and/or face protection, hard hat, heavy gloves, filter mask, and hearing protection.**  
**Failure to comply could result in death or serious injury.**

W0353A

Noise is considered the most common of the pollutants that cause physical problems. Brazilian legislation establishes maximum limits for intensity and continuous or intermittent noise exposure durations. The tolerance limits for continuous and intermittent noise are detailed in Annex 1 to the regulatory Standard (NR15) of 2008. See the legislation in force in your country.

Noise emission tests were performed while your machine was being developed. The tests were performed in line with Directive 2003/10 of the European Economic Community (EEC) or European Community (EC). The table below shows the average noise level at the ears of the operator.

#### Noise emission

Model	Noise level at operator's ear	Passing noise level
<b>TT4030 4WD</b>	<b>97 - 99 dB</b>	<b>85 - 87 dB</b>

It is important to stress that the use of ear protectors is recommended for the Operator and people who work close to the machines, regardless of the noise intensity and time of exposure.

During operation, the machines may be driving or powering other equipment, and this in turn also produces noise. As a result, the real noise levels perceived by the Operator and people who work close to the machines can vary considerably. Always consider wearing ear protectors that are good quality, intact, and that offer maximum protection.

## Before operating the machine

Before operating the tractor, it is important that you read the following information.

**NOTE:** Before driving or operating the tractor, study the safety precautions in Section 2 of this Manual.

Read this section carefully for a thorough understanding of operational requirements. It details the location and operation of the various instruments, switches and controls on your tractor. Even if you operate other tractors, you should thoroughly read this section of the manual and ensure that you are familiar with the location and function of all of the features of the tractor.

Do not start the engine or attempt to drive or operate the tractor until you are totally familiar with all of the controls. It is too late to learn once the tractor is moving. If in doubt about any aspect of tractor operation, consult your NEW HOLLAND dealer.

### Running-in Procedure

**NOTICE:** Your new tractor will provide long and reliable service if given proper care during the first 50-hour running-in period and if serviced at the recommended intervals.

Avoid overloading the engine. Operating in a high gear under heavy load may cause engine overloading. Overloading occurs when the engine will not respond to a throttle increase.

Do not operate without a load on the engine. This can be as harmful to the engine as overloading. Vary the type of operation carried out so the engine is submitted to a mix of heavy and light loads during the running-in period.

Use the lower gear ratios when towing heavy loads and avoid continuous operation at constant engine speeds. Operating the tractor in a low gear with a light load and high engine speed will waste fuel. You will save fuel and minimize engine wear by selecting the correct gear ratios for a particular operation.

Check the instruments and warning lights frequently and keep the radiator and oil reservoirs topped up to the recommended levels.

### Pre-orientation checks

Before operating the tractor, ensure that you are thoroughly familiar with the location and operation of the controls.

Perform daily lubrication and maintenance operations in accordance with Section 7.

After completing the daily maintenance operations, walk around the tractor in order to perform a visual inspection. Special attention must be given to the following items:

- Poly 'V' belt for cracks or damage.
- Areas of the engine and exhaust where debris builds up
- Hoses, lines and fittings for leaks or damage
- Tires for damage
- Loose hardware
- Transmission and hydraulic pump assembly / filter area for leaks or a build up of debris

Make any necessary repairs before using the tractor.

## Fuel-saving tips for optimum output

Adequate maintenance of the tractor reduces fuel consumption considerably.

1. Store fuel in properly cleaned, rust and contaminant free containers.
2. Always fill the reservoir tank at the end of each day to reduce overnight condensation of moisture in the air, so as to avoid damage to the fuel system.
3. Fuel filters should be replaced as per recommended time schedule as the filtering capacity is not retained after this specified time. It may allow harmful contamination and damage the fuel injection system. Follow the maintenance schedule to drain the water from the filters and clean the supply pump filter.
4. Always use genuine fuel filters. See your NEW HOLLAND dealer.
5. Repair diesel leaks, if any, immediately.
6. Dirt particles that may enter the engine cause premature wear of lining and piston rings. This causes loss of power and excessive consumption of engine oil and fuel. Make sure that there are no leaks from the hoses and that the seal of the air filter chamber is in good condition. Keep the hose clamps tightened.
7. Follow the run-in procedure provided in this manual to achieve optimal performance of your tractor.
8. If you keep the engine running at idle speed unnecessarily for long periods, this wastes fuel.
9. Do not rest your foot on the clutch pedal as this will cause clutch slippage, loss of engine power and increased fuel consumption. Maintain the specified play in the clutch pedal.
10. Always drive the tractor in the proper gear.
11. Use a lower gear to drive down a slope and use the brakes sparingly.
12. Maintain the proper tire pressures for field work as well as for roadwork. Refer the tyre pressure chart given in this manual. Worn out tyres cause wheel slippage and waste fuel. Either retread or discard the full set of tires if they are very worn. Adhere to tyre ballasting as and when required to reduce wheel slippage and fuel consumption.
13. Always use the appropriate implements to reduce diesel fuel wastage. Implements should be maintained in good condition, as usage of worn out implements will waste fuel.
14. Always plough length wise and plan your field run to reduce fuel consumption. Adjust the wheel gauge to suit the implement and avoid overlap when you work in the field.
15. Adjust the proper engine rotation when you work with equipment powered by Power Take-Off (PTO). If you select the wrong rotation, it will result in excess fuel consumption.

## International symbols

As a guide to the operation of the machine, various universal symbols have been utilized on the instruments, controls, switches, and fuse box. The symbols are shown below with an indication of their meaning.

	Cold start heating plug		Rotating beacon		Power Take Off (PTO)		Variable control
	Alternator charging	KAM	Memory activated	N	Transmission in neutral		Socket for attachments
	Fuel Level		Turn signals		Creeper selection		Socket for implements
	Automatic fuel shut-off		Turn signals -one trailer		Low selector		Wheel slippage percentage
	Engine speed (rev/min x 100)		Turn signals -two trailers		High selector		Raising hydraulic Hydrostatic
	Hour meter		Windscreen washer		Speed speed		Lowering hydraulic lift
	Engine oil pressure		Windscreen washer		Differential lock		Height limit of hydraulic lift
	Coolant temperature of the engine		Temperature control control		Oil temperature of rear axle		Hydraulic lift disabled
	Coolant level		Cab recirculation fan		Pressure of transmission oil		Transmission and hydraulic filters
	Tractor lights		Air conditioner		Auxiliary Front Wheel Drive (AFWD) engaged		Remote valve float
	Head Light headlight		Restriction of air filter		Warning!		Remote valve float
	Head Light dipped beam		Towing brake		Hazard warning lights		Remote control valve float
	Work lamps		Brake fluid level		Variable control		Malfunction! See Manual
	Stop lamp		Towing brake		Pressurized! Open carefully		Malfunction! (alternative symbol)
	Horn		Warning! Corrosive substance		Position position		

Thank you so much for reading.  
Please click the “Buy Now!”  
button below to download the  
complete manual.



After you pay.

You can download the most  
perfect and complete manual in  
the world immediately.

Our support email:

[ebooklibonline@outlook.com](mailto:ebooklibonline@outlook.com)