

ORIGINAL INSTRUCTIONS

- according to Directives 2006/42/EC, Annex I 1.7.4.1

LRZ 95
LRZ 100
LRZ 120
LRZ 130
LRZ 150
Loader

Operator's Manual

Print No. 84265730

1st edition

English 01/10



TO THE OWNER

This manual contains information concerning the adjustment and maintenance of your Case Model Front Loader. You have purchased a dependable machine, but only by proper care and operation can you expect to receive the performance and long service built into this loader. Please have all operators read this manual carefully and keep it available for ready reference. Obtain a new operating manual immediately if the old manual is damaged or lost.

This loader was designed to be used with JXU, Maxxum and Puma SWB tractors. It is intended to load and move materials with a variety of buckets and attachments.

Your authorised Case dealer will instruct you in the general operation of your loader. (Refer to the "Delivery Report" at the back of this manual.) Your dealer's staff of factory-trained service technicians will be glad to answer any questions that may arise regarding the operation of your loader.

Your authorised dealer carries a complete line of genuine Case service parts. These parts are manufactured and carefully inspected to insure high quality and accurate fitting of any necessary replacement parts. Be prepared to give your dealer the model and product identification number of the loader, when ordering parts. Locate these numbers now and record them below. Refer to the "General Information and Safety" section of this manual for the location of the model and product identification numbers of your loader.

Note the front loader data here.

In section 1 on page 1-1 there is a description of where the type plate of the front loader is located.

Front loader	
Front loader model	
Production number	
Year of manufacture	
Delivery list number	
Purchase date	

Note the data here for the tractor to which the front loader has been attached.

Tractor	
Tractor model	
Production number	
Year of manufacture	

PRODUCT IMPROVEMENTS

Case is continually striving to improve its products. We reserve the right to make improvements or changes when it becomes practical and possible to do so, without incurring any obligation to make changes or additions to the equipment sold previously.

EC Declaration of Conformity

In accordance with the EC Machinery Directive 2006/42/EC, Annex II A

The company,

Wilhelm Stoll Maschinenfabrik GmbH
Bahnhofstraße 21
38268 Lengede, Germany

herby declares that the Case front loader, type NS, NS+, MS and MS+ satisfies the basic safety and health requirements set forth in the EC directive.

Applied directives:

2006/42 EC (war 98/37/EC)
2004/108/EC (war 89/336/EEC)

Machinery directive
Electromagnetic compatibility

Applied standards:

EN 12525:2000, EN 12525/A1:2006
EN ISO 12100-1, -2:2003

EN 982:1996
ISO 23206:2005
EN ISO 14982:1998

Front loaders - Safety
Safety of machinery - Basic concepts, general principles for design
Safety of machinery - hydraulic system
Carries for attachments
Electromagnetic compatibility



Legende, 1 October 2007 pp Uwe Ockert
Design

Legende, 1 October 2007 pp Klaus Schlag
Plant manager



CONTENTS

Title	Page
Section 1 - General Information and Safety	
Identification Plate	1-1
Safety Precautions	1-2
General Information	1-3
Safety and Advisory Decals	1-8
Ecology and the Environment	1-14
Section 2 - Loader Operation	
General Information	2-1
Loader and Loader Types Description	2-4
Operation of the Front Loader	2-8
Attaching the Loader	2-13
Removing the Loader	2-16
Varipark Parking Stands	2-18
Installation and Removal of Attachments	2-20
3rd and 4th Hydraulic Control Circuits	2-23
Setting Bucket Level Indicator	2-26
Float Position	2-27
Extra scooping	2-27
Active Extra-scooping	2-28
Drop Down	2-28
Fast Tip	2-28
Attachment Self Levelling Operation	2-29
Hydraulic Control Valves, Identification	2-30
Smooth Ride Control	2-32
Ballasting the Tractor	2-33
Operating with the Loader	2-34
Special Attachments	2-37
Section 3 - Lubrication and Maintenance	
Loader Lubrication	3-1
Loader Maintenance	3-2
Loader Repair	3-2
Checking Loader Operation	3-2
Hardware Torque Values	3-3
Tube and Fitting Torque Values	3-4
Section 4 - Fault Finding	
Loader, General	4-1
Multi Quick Coupler	4-7

Section 5 - Specifications

LRZ 95 NS, LRZ 95 NS+ 5-3
LRZ 95 MS, LRZ 95 MS+ 5-4
LRZ 100 NS, LRZ 100 NS+ 5-5
LRZ 100 MS, LRZ 100 MS+ 5-6
LRZ 120 NS, LRZ 120 NS+ 5-7
LRZ 120 MS, LRZ 120 MS+ 5-8
LRZ 130 NS, LRZ 130 NS+ 5-9
LRZ 130 MS, LRZ 130 MS+ 5-10
LRZ 150 MS, LRZ 150 MS+ 5-11
Case LRZ Optional Loader Implement 5-12

Section 6 - Circuit Diagrams

Circuit Diagram - Hydraulic System 6-1
Circuit Diagram - Electrical System 6-6

Section 7 - Index

Section 8 - Delivery Report

Tractor-loader combination

Front loader modell	Range			
	JXU			
	Tractor			
	75	85	95	105
LRZ 95 NS	R	C	-	-
LRZ 95 NS+	R	C	-	-
LRZ 95 MS	R	C	-	-
LRZ 95 MS+	R	C	-	-
LRZ 100 NS	-	R	R	C
LRZ 100 NS+	-	R	R	C
LRZ 100 MS	-	R	R	C
LRZ 100 MS+	-	R	R	C
LRZ 120 NS	-	C	C	R
LRZ 120 NS+	-	C	C	R
LRZ 120 MS	-	C	C	R
LRZ 120 MS+	-	C	C	R

R = Recommended **C** = Compatible - = Non Compatible
NS+ = Non Self Levelling **MS+** = Mechanical Self Levelling

Tractor-loader combination

Front loader modell	Range						
	Maxxum						
	Tractor						
	100	110	120	130	115	125	140
LRZ 100 NS	R	R	C	C	-	-	-
LRZ 100 NS+	R	R	C	C	-	-	-
LRZ 100 MS	R	R	C	C	-	-	-
LRZ 100 MS+	R	R	C	C	-	-	-
LRZ 120 NS	C	C	R	R	R	C	-
LRZ 120 NS+	C	C	R	R	R	C	-
LRZ 120 MS	C	C	R	R	R	C	-
LRZ 120 MS+	C	C	R	R	R	C	-
LRZ 130 MS	-	-	-	-	-	R	C
LRZ 130 MS+	-	-	-	-	-	R	C

R = Recommended **C** = Compatible - = Non Compatible
NS+ = Non Self Levelling **MS+** = Mechanical Self Levelling

Tractor-loader combination

Front loader modell	Range		
	PUMA SWB		
	Tractor		
	T6030	T6070	T6080
LRZ 120 NS	C	C	-
LRZ 120 NS+	C	C	-
LRZ 120 MS	C	C	-
LRZ 120 MS+	C	C	-
LRZ 130 MS	R	C	-
LRZ 130 MS+	R	C	-

R = Recommended **C** = Compatible - = Non Compatible
NS+ = Non Self Levelling **MS+** = Mechanical Self Levelling

SECTION 1

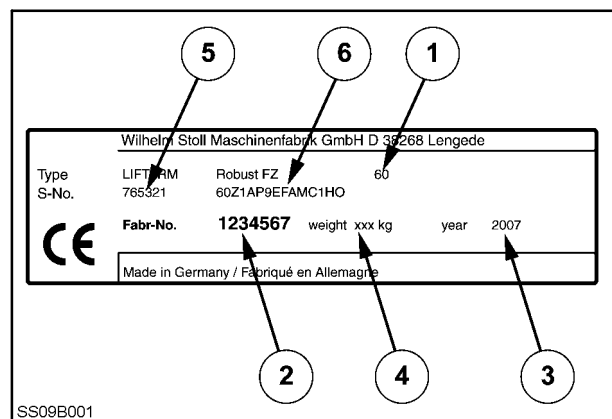
GENERAL INFORMATION AND SAFETY

The LRZ 95, LRZ100, LRZ 120, LRZ 130 and LRZ 150 front loaders are designed to be used with the Case JXU, Maxxum and Puma SWB range of tractors.

A choice of optional buckets and attachments are available to make Case LRZ front loaders a genuine multi-purpose tool. As the capacities of the buckets have been matched to the tractor size, the operator can choose the bucket best suited for the tractor, as well as the task. Bucket sizes and recommendations are listed in the "Specifications" section.

A product identification plate is attached on the transverse pipe of the loader unit. For your convenience, have your dealer record the information on this plate in the space provided on the "To The Owner" page at the front of this manual.

All data supplied in this book is subject to production variations. Dimensions and weights are approximate only, and the illustrations do not necessarily depict tractors or loaders in standard condition. For specific information about any tractor or loader, please consult your authorised dealer.



4

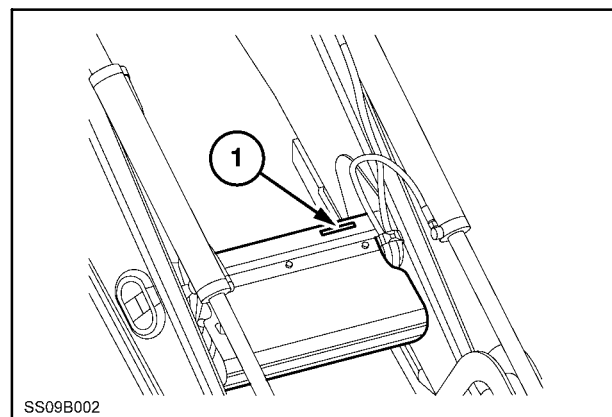
P.I.N. Plate Location

The Product Identification Plate (1) is located on the transverse pipe of the loader unit. In addition, the production number has been stamped on the transverse pipe. This plate contains important information on the loader Model and Serial numbers. Your authorised dealer will require this information when ordering parts or accessories for your loader.

Data on the plate (see Figure 4):

- 1.) Front loader type
- 2.) Fabrication number
- 3.) Year of manufacture
- 4.) Weight of the front loader without implement
- 5.) Serial number
- 6.) Function code

NOTE: Make yourself aware of the legislative requirements in your country and **pay attention to the national legislative requirements for approval of any kind of equipment firmly attached to the tractor.**



5

SAFETY PRECAUTIONS

A careful operator is the best operator. Most accidents can be avoided by observing certain precautions. To help prevent accidents, read the following precautions before operating this equipment. Equipment should be operated only by those who are responsible and instructed to do so.

Precautionary Statements

Throughout this manual and on machine decals, you will find precautionary statements **DANGER**, **WARNING**, **CAUTION**, **NOTE**, **ATTENTION** and **IMPORTANT** followed by specific instructions.

These precautions are intended for the personal safety of you and those working with you. Please take the time to read them.

Machine Safety

NOTE: *This text stresses a correct operating technique or procedure.*

ATTENTION: *This text warns the operator of potential machine damage if a certain procedure is not followed.*

IMPORTANT: *This text informs the reader of something that he needs to know to prevent minor machine damage if a certain procedure is not followed.*

Personal Safety

 **CAUTION** 

The word **CAUTION** is used where a safe behavioural practice, according to operating and maintenance instructions and common safety practices will protect the operator and others from accident involvement.

 **WARNING** 

The word **WARNING** denotes a potential or hidden hazard which could possibly cause serious injury. It is used to warn operators and others to exercise due care and attention to avoid a surprise accident with machinery.

 **DANGER** 

The word **DANGER** denotes a forbidden practice in connection with a serious hazard.

Failure to follow the **CAUTION**, **WARNING** and **DANGER** instructions may result in serious bodily injury or even death.

Carefully review the procedures given in this manual with all operators. It is important that all operators be familiar with and follow safety precautions.

GENERAL INFORMATION

1. Read the Operator's manual completely and thoroughly before using the tractor or loader. Lack of operating knowledge can lead to serious accidents.
2. Operate the tractor only from the operator's seat. The direction information right and left used in this operating manual is always based on the driver's perspective.
3. Replace damaged, missing or illegible safety decals. See the "Safety and Advisory Decal" section in this manual for proper location of all safety decals.
4. Comply with the accident prevention regulations as well as the technical safety, occupational health, and road traffic regulations of the country where the front loader is used.
5. Unauthorized changes to the front loader and to the implements exclude liability on the part of the manufacturer for resulting damage.
6. Ensure that all components are firmly attached.
7. Repair or replace damaged, excessively worn, or missing parts.
8. Regularly check the tightening torque of all bolts and nuts. Ensure that all components are lubricated regularly. See the "Lubrication and Maintenance" section in this manual.
9. Ensure that protective devices and covers are in good condition and properly mounted.

The Tractor

1. Use approved rollover protection and seat belt for safe operation. Overturning a tractor without an approved cab or roll bar could result in serious injury or death. If the tractor is not equipped with the proper rollover protection, see your tractor dealer to obtain the proper parts.
2. Always use the seat belt on tractors equipped with a roll bar or cab. Do not use a seat belt if operating the tractor without a roll bar or cab.
3. Add the recommended wheel ballast and/or rear weight as recommended in the Owners manual to provide adequate stability when using a loader.
4. Position the wheels to the tractor manufacturer's widest recommended settings to increase stability.
5. Move and turn the tractor at low speeds. When driving on curves reduce the speed and lower the load.
6. Before starting the engine, be sure all operating controls are in the neutral or park position. This will eliminate accidental movement of the machine or start up of power driven equipment.
7. Before leaving the tractor, stop the engine, put all controls in neutral, engage the park brake, lower the front loader onto the ground and remove the key from the key switch.
8. When transporting the loader, engage the loader control neutral lock to prevent accidental cycling of the loader.



WARNING



Connect the brake pedals of the tractor together. Never use separated brakes if a front loader is mounted.

Buy Now



Our support email:

ebooklibonline@outlook.com