

**JXU75
JXU85
JXU95
JXU105
JXU115
Tractors**

Operator's Manual

Print No. 84315670

1st edition
English 03/10

CASE II
AGRICULTURE

ORIGINAL INSTRUCTIONS

- according to Directives 2006/42/EC, Annex I 1.7.4.1

JXU75
JXU85
JXU95
JXU105
JXU115
Tractors

Operator's Manual

Print No. 84315670

1st edition

English 03/10

CASE III
AGRICULTURE

SECTION SUMMARY

1 - Introduction and safety measures

2 - General Information, Controls and Instruments

3 - Field operation

4 - Lubrication and Maintenance

5 - Troubleshooting

6 - Vehicle storage

7 - Accessories

8 - Specifications and Data

9 - Alphabetical Index

Electromagnetic Interference (EMC)

This tractor complies strictly with the European Regulations on electromagnetic emissions.

However, interference may arise as a result of add-on equipment which may not necessarily meet the required standards.

As such interference can result in serious malfunction of the unit and/or create unsafe situations, you must observe the following:

- Ensure that each piece of non-New Holland equipment fitted to the tractor bears the mark.



- The maximum power of electromagnetic emission equipment (radio, telephones, etc.) must not exceed the limits imposed by the national authorities of the country where you use the tractor.
- The electromagnetic field generated by the add-on system should not exceed 24 V/m at any time and at any location in the proximity of electronic components.

Failure to comply with these rules will render the New Holland warranty null and void.

SUMMARY

Page

SECTION 1 General information and safety

Notices to users	1-1
Tractor identification	1-2
Important ecological considerations	1-5
Always work safely	1-6
Working safely	1-7
Safety Decals	1-13
Tractor noise level information sheet	1-18
Tractors main components	1-19

SECTION 2 Controls, instruments and operation

Control panel	2-2
Control panel	2-3
Programming keypad	2-25
Operating controls	2-44
Seat adjustment	2-47
Cab	2-52
Air-conditioned cab	2-60
Instructions for use - air conditioning system	2-62
Transmission with range gear and shuttle - 18.64 mph (30 km/h) (12F + 12R - Synchro Shuttle)	2-64
Transmission with range gear and shuttle - 18.64/24.85 mph (30/40 km/h) (12F + 12R - Power Shuttle)	2-67
Transmission with creeper and shuttle - 18.64/24.85 mph (30/40 km/h) (20F + 12R - Synchro Shuttle)	2-70
Transmission with creeper and shuttle - 18.64/24.85 mph (30/40 km/h) (20F + 20R - Power Shuttle)	2-73
Transmission with Dual Command (2 Speed Power Shift) - 18.64 or 24.85 mph (30 or 40 km/h) (24F + 12R - Dual Command (2 Speed Power Shift))	2-78
Transmission with electrohydraulic Dual Command (2 Speed Power Shift) / Power-Shuttle and clutch 30/40 km/h (24F + 24R)	2-79

SECTION 3 Field operation

Starting and stopping	3-2
Starting with low outside temperatures	3-3
Electrohydraulically controlled four-wheel drive	3-6
Rear differential lock	3-8
Front and rear differential lock	3-9
Brakes	3-11
Power take-off	3-17
Hydraulic lift	3-25
Electronically controlled hydraulic lift	3-29
Three-point linkage	3-43
Implement connection points	3-48
Remote control valves	3-52
Remote control valves (de luxe)	3-56
Wheel track adjustment	3-59
Steering angle adjustment	3-63
Tyres	3-68
Tyre size	3-72
Tyre combinations	3-74
Ballast	3-76
Maximum permitted weights	3-81

SECTION 4 Lubrication and Maintenance

Access for inspection and maintenance	4-7
Lubrication and maintenance table	4-8
Flexible maintenance	4-11
Instrument panel warning lights	4-17
Every 10 hours of work	4-20
Every 50 hours of work	4-22
Every 100 hours of work	4-25
Every 300 hours of work	4-27
Every 600 hours of work	4-32
Every 1200 hours or every year	4-35
Every 1200 hours of work or every 2 years	4-36
Every 1800 hours of work	4-41
Electrical System	4-42
Consumables	4-67

SECTION 5 Troubleshooting

SECTION 6 Tractor storage

SECTION 7 Accessories

Quick fit implement linkage	7-2
Towing equipment	7-4
Fold-down roll bar	7-12
Joystick for auxiliary control valves (optional)	7-13
Front loader prearrangement	7-15
Control valve for trailer hydraulic brakes	7-16

SECTION 8 Specifications and data

SECTION 9 Alphabetical index

SECTION 1

NOTICE TO USERS

SERVICE PARTS

“Non-original” spare parts have not been tested or authorised by the Manufacturer. Installment and/or use of such products may adversely affect the tractor’s design specifications, thereby compromising operational safety. The manufacturer cannot be held responsible for any damage resulting from the use of “non-original” spare parts.

No modifications may be made to the tractor without written authorisation from the Manufacturer.

WARRANTY

The tractor is guaranteed in accordance with current legislation in your country and in line with contractual agreements reached with the dealer at the time of sale. However, the warranty is no longer valid if the rules and instructions for the use and maintenance of the tractor, described in this Manual, are not observed.

CLEANING THE TRACTOR

Your tractor is an advanced machine, fitted with an electrohydraulic control system. Care must be taken when cleaning the tractor, especially if a pressurized water cleaner is used.

- Never stand too close to the tractor or direct the water jet on electrical components, seals or intake openings, etc.
- Never direct jets of cold water at the hot engine or exhaust.

TRACTOR IDENTIFICATION

Serial numbers identify the tractor and its main components. The identification data must be supplied by the dealer for requests for spare parts or service operations. Identification data is of fundamental importance in the event of theft of the tractor. The location of the various identification data is shown below.

CNH EUROPE HOLDING S.A. MADE IN ITALY	
XXXXX XXXXXXXXXXXXX XXXXX XXXXXXXXXXXXX XXXXX XXXXX XXXXXXXXXXXXX (x) XXXXX XXXX XXXXXXXXXXX XXXXXXXXXXX (x) XXXXX XXXX XXXXXXXXXXX XXXXXXXXXXX (x) XXXXX XXXX XXXXXXXXXXX XXXXX XXXXX XXXXXXXXXXX (x) XXXXX XXXXXXXXXXX XX XXXXXXXXXXX XX XXXXXXXXXXX (x) XXXXX XXXXXXXXXXX XX XXXXXXXXXXX XX XXXXXXXXXXX (x) XXXXX XXXXXXXXXXX XX XXXXXXXXXXX XX XXXXXXXXXXX (x)	 XX: X: XX: X:

Frame and engine type summary data plate (located under the steering wheel).

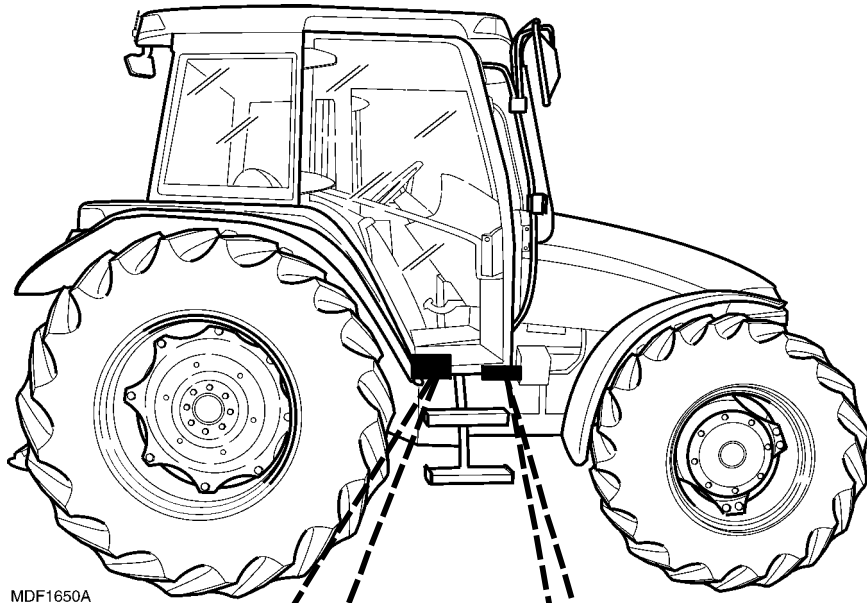
MDF1430B

Tractor frame number identification data plate (stamped on the axle support under the bonnet).

☆ 0000000000 ☆



Frame identification data plate.

FRAT	SAFETY STRUCTURE	TYPE/MODEL	ITALY
	STRUCTURE TESTED		
SAC	SAE	D.E.C. REPORT	ALGERIA
	FRANCE MARCHÉ STRUCTURE	CSMA	
NEW HOLLAND	VEHICLE WEIGHT FOR SAE TEST	kg	GB
	STRUCTURE SERIAL	N°	

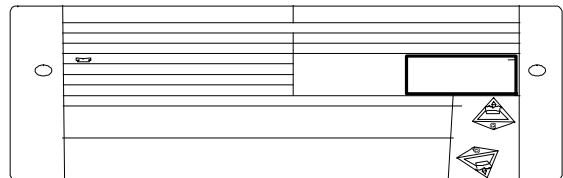


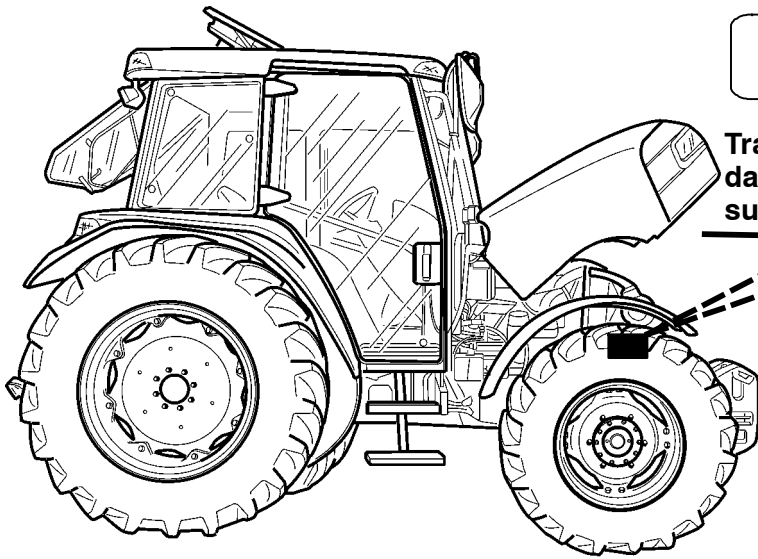
MDF1650A

Frame and engine type identification data plate (inside the cab).

CNH EUROPE HOLDING S.A. MADE IN ITALY	
XXXX	 
XXXXXXXXXXXX	
XXXXX XXXXXXXXXXXXX	
XXXXXX XXXXX XXXXXXXXXXX (x)	
XXXXXX XXXX XXXXXXX XXXXXXX (x)	XX: X:
XXXXXX XXXX XXXXXXX XXXXXXX (x)	XX: X:
XXXXXX XXXX XXXXXXXXXXX	
XXXXXX XXXX XXXXXXX (x)	
XXXXXX XXXXXXX XX XXXXXXX XX XXXXXXX(x)	
XXXXXX XXXXXXX XX XXXXXXX XX XXXXXXX(x)	
XXXXXX XXXXXXX XX XXXXXXX XX XXXXXXX(x)	

Cab identification data plate.

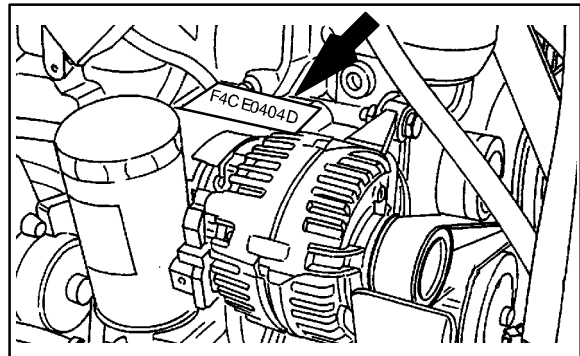




☆000000000☆

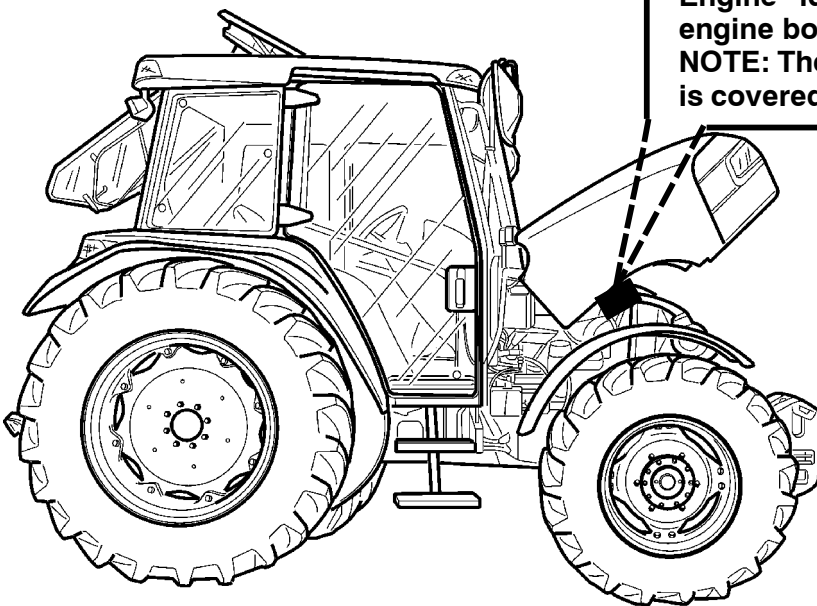
Tractor frame number identification data plate (stamped on the axle support under the bonnet).

MDF1413A



Engine identification data plate (on engine body).

NOTE: The stamped identification code is covered by protective adhesive tape.



MDF1413A

IMPORTANT ECOLOGICAL CONSIDERATIONS

Soil, air and water are essential elements for agriculture and for life in general. If local legislation does not control the treatment of certain substances, the production of which is necessitated by advanced technologies, products derived from chemical and petrochemical products must be used and disposed of according to the rules of common sense.

The following recommendations may be of help:

- Find out what the relevant legislation in your country stipulates.
- Ask your suppliers of lubricants, oils, fuels, anti-freeze, detergents, etc. for information on the effects of these products on humans and the environment and for instructions concerning their use, storage and disposal. In many cases, local agricultural consultants will be able to provide assistance.

SUGGESTIONS

1. Avoid using unsuitable, pressurised filling systems or fuel cans when filling tanks, as these may cause considerable spillage and leakage of liquids.
2. As a general rule, do not allow liquid fuels, lubricants, acids, solvents, etc., to come into contact with the skin. The majority of these products contain substances that are potential health hazards.
3. Modern lubricants contain additives. Do not burn contaminated fuel oils and/or oils used in conventional heating systems.
4. Avoid spillage when transferring used engine cooling liquids, engine and transmission lubricants, hydraulic oils, brake fluids, etc. Never mix used brake oil with fuel oil, or fuel oil with lubricants. Store safely until suitable disposal can be arranged according to national legislation or local regulations.
5. Modern anti-freeze liquids and solutions, e.g. anti-freeze and other additives, must be replaced every two years. They must not be left to be absorbed into the ground, but must be collected and disposed of in a suitable manner.
6. Do not open the air conditioning systems to carry out work. These systems contain gas that must not be released into the atmosphere. Contact your dealer or specialised personnel, who are equipped with the appropriate equipment and are authorised to re-fill the system.
7. Any leakage or defect in the engine cooling or hydraulic systems must be repaired immediately.
8. Do not increase the pressure in pressurised systems, as this may cause component parts to burst.
9. When welding, make sure that hoses are properly protected as sparks or molten material may puncture or weaken the tubes and sleeves, resulting in leakage of oil, cooling liquid, etc.
10. Do not adjust the setting of the fuel delivery system as this will alter the emission of exhaust fumes.

NOTE: THE ENGINES INSTALLED ON THE TRACTORS COMPLY WITH ANTI-POLLUTION LEGISLATION.

Buy Now



Our support email:

ebooklibonline@outlook.com