

OPERATOR'S MANUAL

T5040

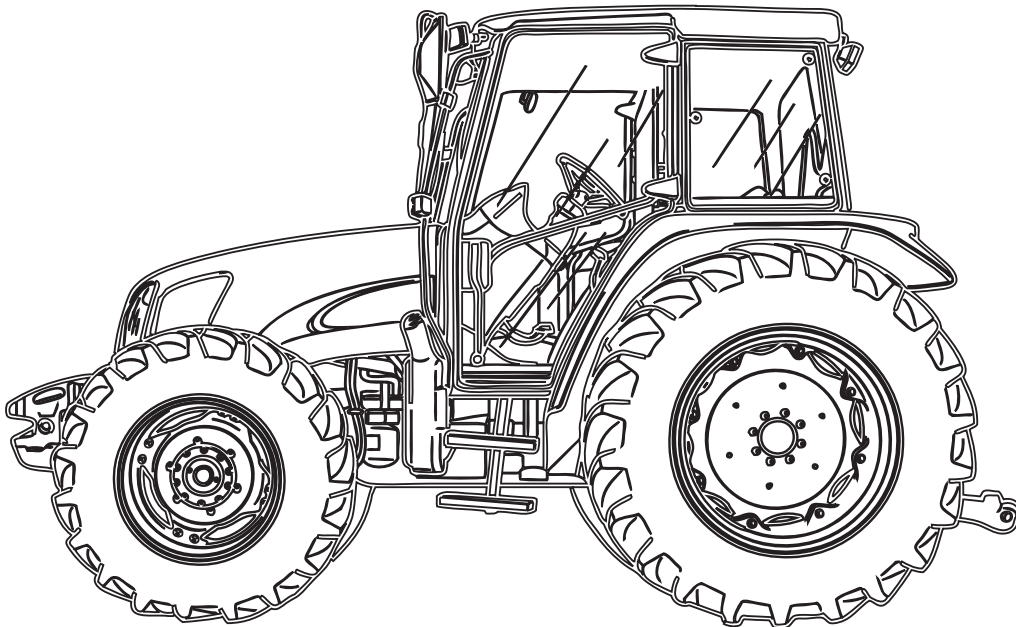
T5050

T5060

T5070

Tractor

PIN # Z8JH00907 and Above



Part number 84339665

2nd edition English

June 2010

Replaces part number 87481903



TO THE OWNER

This manual contains information concerning the adjustment and maintenance of your New Holland T5040, T5050, T5060, and T5070 tractor. You have purchased a dependable machine, but only by proper care and operation can you expect to receive the performance and long service built into this tractor. Please have all operators read this manual carefully and keep it available for ready reference.

Your New Holland dealer will instruct you in the general operation of your tractor. (Refer to the “Delivery Report” at the back of this manual.) Your dealer’s staff of factory-trained service technicians will be glad to answer any questions that may arise regarding the operation of your tractor.

Your New Holland dealer carries a complete line of genuine New Holland service parts. These parts are manufactured and carefully inspected to insure high quality and accurate fitting of any necessary replacement parts. Be prepared to give your dealer the model and PIN of the tractor, when ordering parts. Locate these numbers now and record them below. Refer to the “General Information” section on of this manual for the location of the model and PIN of your tractor.

Model _____

Product Identification Number (PIN) _____

IMPROVEMENTS

CNH America LLC is continually striving to improve its products. We reserve the right to make improvements or changes when it becomes practical and possible to do so, without incurring any obligation to make changes or additions to the equipment sold previously.

CONTENTS

Section - Page

SECTION 1 - GENERAL INFORMATION AND SAFETY

NOTICE TO USER	1-1
GENERAL GUIDELINES	1-1
CLEANING THE TRACTOR	1-1
SAFETY	1-1
SERVICE AFTER THE FIRST 50 HOURS OF WORK	1-1
SERVICE PARTS	1-1
WARRANTY	1-1
TRACTOR IDENTIFICATION	1-2
IMPORTANT ECOLOGICAL CONSIDERATIONS	1-5
RECOMMENDATIONS	1-5
PRECAUTIONARY STATEMENTS	1-6
GENERAL PRECAUTIONS	1-7
OPERATOR PROTECTIVE STRUCTURE	1-7
WORKING SAFELY	1-8
STARTING THE TRACTOR	1-9
USING THE TRACTOR	1-9
TOWING AND TRANSPORT	1-11
USING IMPLEMENTS AND AGRICULTURAL MACHINERY	1-11
STOPPING THE TRACTOR	1-12
SERVICING THE TRACTOR	1-12
SAFETY DECALS	1-14
COMPONENT IDENTIFICATION	1-19
STANDARDIZED SYMBOLS	1-21

SECTION 2 - GENERAL INFORMATION, CONTROLS AND INSTRUMENTS

INTRODUCTION	2-1
INDICATOR AND WARNING LIGHTS	2-3
ANALOG/DIGITAL INSTRUMENT PANEL	2-7
ADVISORY DISPLAYS AND INFORMATION	2-13
OPERATING CONTROLS	2-33
OPERATOR'S SEAT	2-42
CAB	2-48
AIR CONDITIONED CAB	2-56
TRANSMISSION WITH RANGE GEAR AND SHUTTLE 30/40 KM/H (19/25 MPH) - (12F + 12R - SYNCHRO SHUTTLE)	2-59
TRANSMISSION WITH RANGE GEAR AND HYDRAULIC POWER SHUTTLE 30/40 KM/H (19/25 MPH) - (12F + 12R - POWER SHUTTLE)	2-62
TRANSMISSION WITH CREEPER AND SHUTTLE 30/40 KM/H (19/25 MPH) - (20F + 12R - SYNCHRO SHUTTLE)	2-66
TRANSMISSION WITH CREEPER AND POWER SHUTTLE 30/40 KM/H (19/25 MPH) - (20F + 20R - POWER SHUTTLE)	2-70
TRANSMISSION WITH ELECTRO-HYDRAULIC DUAL COMMAND (2 SPEED POWER SHIFT) AND POWER-SHUTTLE 30/40 KM/H (19/25 MPH) - (24F + 24R)	2-74
TRANSMISSION WITH ELECTRO-HYDRAULIC DUAL COMMAND (2 SPEED POWER SHIFT), POWER-SHUTTLE AND CLUTCH 30/40 KM/H (19/25 MPH) (24F + 24R)	2-76
FAULT CODES DESCRIPTION	2-84

SECTION 3 - FIELD OPERATION

FIELD OPERATION	3-1
RUNNING-IN PROCEDURE	3-2
STARTING AND STOPPING	3-3
TOWING THE TRACTOR	3-5
TRANSPORTING THE TRACTOR	3-5
ELECTRO-HYDRAULICALLY OPERATED FOUR-WHEEL DRIVE	3-6
USING FOUR-WHEEL DRIVE	3-6
REAR DIFFERENTIAL LOCK (MECHANICALLY CONTROLLED - STANDARD MODELS)	3-8
FRONT AND REAR DIFFERENTIAL LOCK (WITH ELECTRO-HYDRAULIC CONTROLLED - 4WD MODELS AT 40 KM/H (25 MPH)	3-9
BRAKES	3-11
TRANSMISSION CLUTCH PEDAL	3-16
FOOT THROTTLE	3-16
HAND THROTTLE	3-16
POWER TAKE-OFF	3-17
HYDRAULIC LIFT	3-25
ELECTRONICALLY CONTROLLED HYDRAULIC LIFT	3-29
THREE-POINT LINKAGE	3-43
IMPLEMENT LINKAGE POINTS	3-48
REMOTE AUXILIARY CONTROL VALVES (STANDARD MODELS)	3-52
REMOTE AUXILIARY CONTROL VALVES (DELUXE MODELS)	3-55
WHEEL TRACK ADJUSTMENT	3-59
STEERING ANGLE ADJUSTMENT	3-67
TIRES	3-68
BALLAST	3-76
MAXIMUM PERMITTED WEIGHTS	3-81

SECTION 4 - LUBRICATION AND MAINTENANCE

INTRODUCTION	4-1
SAFETY PRECAUTIONS	4-1
HOW TO PREVENT CONTAMINATION OF THE SYSTEM	4-1
MAINTENANCE INTERVALS	4-1
RUNNING-IN PERIOD	4-3
MISCELLANEOUS CHECKS	4-4
WARNING LIGHTS	4-4
ENVIRONMENTAL CONSIDERATIONS	4-4
ENGINE COOLING SYSTEM	4-4
RADIATOR	4-4
TIRES	4-4
TRACTOR REFUELING	4-5
ACCESS FOR INSPECTION AND MAINTENANCE	4-7
INTRODUCTION	4-7
FLEXIBLE MAINTENANCE (OPERATIONS TO PERFORM ONLY IF NECESSARY)	4-11
WHEN DASHBOARD INDICATORS LIGHT UP	4-17
EVERY 10 HOURS OF WORK	4-20
EVERY 50 HOURS OF WORK	4-22
EVERY 100 HOURS OF WORK	4-25
EVERY 600 HOURS OF WORK	4-32
EVERY 1200 HOURS OR EVERY YEAR	4-35
EVERY 1200 HOURS OF WORK OR EVERY 2 YEARS	4-36
EVERY 1800 HOURS OF WORK	4-41

ELECTRICAL SYSTEM - GENERAL INFORMATION	4-42
BATTERY	4-42
FUSES AND RELAYS	4-45
LUBRICANTS AND FLUIDS	4-68

SECTION 5 - TROUBLESHOOTING

INTRODUCTION	5-1
ENGINE	5-2
ELECTRICAL SYSTEM	5-4
HYDRAULIC SYSTEM	5-5
HYDRAULIC LIFT AND THREE POINT LINKAGE	5-5
BRAKES	5-6
CAB	5-6

SECTION 6 - TRACTOR STORAGE

TRACTOR STORAGE	6-1
-----------------------	-----

SECTION 7 - ACCESSORIES

FOLD-DOWN ROPS	7-2
JOYSTICK FOR AUXILIARY CONTROL VALVES (OPTIONAL)	7-3
FRONT LOADER PREARRANGEMENT	7-5
CONTROL VALVE FOR TRAILER HYDRAULIC BRAKES	7-6

SECTION 8 - SPECIFICATIONS AND DATA

SPECIFICATIONS AND DATA	8-1
-------------------------------	-----

SECTION 9 - FORMS

DELIVERY REPORT	9-1
FIRST 50 HOUR SERVICE	9-5

SECTION 10 - INDEX

INDEX	10-1
-------------	------

CALIFORNIA

Proposition 65 Warning

Diesel engine exhaust and some of its constituents are known to the State of California to cause cancer, birth defects, and other reproductive harm.

Battery posts, terminals and related accessories contain lead and lead compounds, chemicals known to the State of California to cause cancer and birth defects or other reproductive harm. Wash hands after handling.

SECTION 1

GENERAL INFORMATION AND SAFETY

NOTICE TO USER

GENERAL GUIDELINES

This Operator's Manual provides a guide for the user with regard to running-in, use and maintenance of the tractor.

Read this manual carefully and keep in a convenient place for future reference. Do not hesitate to contact your local dealer for any queries concerning your tractor. The dealer can provide skilled personnel, trained by the manufacturer, original service parts and all tools and equipment necessary for your service requirements.

The tractor is designed as a power generator and drive-propulsion unit for use in normal and traditional agricultural conditions.

The tractor is also designed to provide maximum performance, economic running and easy use over a wide range of operations. Prior to delivery, all machines are carefully inspected (by both the Manufacturer and your local authorized dealer), ensuring that the machine reaches the user in perfect condition. To maintain the tractor in this condition and ensure trouble-free operation, the routine maintenance described in Section 4 of this manual must be carried out at the specified intervals.

CLEANING THE TRACTOR

Your tractor is an advanced machine, fitted with an electrohydraulic control system. Care must be taken when cleaning the tractor, especially if a pressurized water cleaner is used.

- Never stand too close to the tractor or direct the water jet on electrical components, seals or intake openings, etc.
- Never direct jets of cold water at the hot engine or exhaust. See (RECOMMENDATIONS FOR BODYWORK MAINTENANCE) in Section 4.

SAFETY

Safety precautions for the operator and bystanders are shown in Section 1 and throughout manual inclusive. Read the safety instructions and follow recommendations and hints **before** starting to use the tractor.

SERVICE AFTER THE FIRST 50 HOURS OF WORK

The operations required for the first service are shown at the end of the Manual, immediately prior to the index.

After the first 50 hours of use, return to the dealer with your tractor and this Manual in order to carry out the Manufacturer's checks and to fill in the certificates included in Section 9. Two forms are provided for the dealer and the owner's records. The forms must be compiled on completion of the service. The dealer retains one of the completed forms and the other completed form is kept in the Manual for documentation and reference purposes. **Check that both copies are signed by both yourself and the dealer.**

SERVICE PARTS

"Non-original" spare parts have not been tested or authorized by the Manufacturer. Installment and/or use of such products may adversely affect the tractor's design specifications, thereby compromising operational safety. The manufacturer cannot be held responsible for any damage resulting from the use of "non-original" spare parts.

No modifications may be made to the tractor without written authorization from the Manufacturer.

WARRANTY

The tractor is guaranteed in accordance with current legislation in your country and in line with contractual agreements reached with the dealer at the time of sale. However, the warranty is no longer valid if the rules and instructions for the use and maintenance of the tractor, described in this Manual, are not observed.

TRACTOR IDENTIFICATION

Product identification numbers (pin) identify the tractor and its main components. The identification data must be supplied by the dealer for requests for spare parts or service operations. Identification data is of fundamental importance in the event of theft of the tractor. The location of the various identification data is shown below.

CNH EUROPE HOLDING S.A. MADE IN ITALY	
XXXX	CE
XXXXXXXXXXXX	PG
XXXXX XXXXXXXXXXXX	MPSI
XXXXX XXXXX XXXXXXXX (x)	
XXXXX XXXX XXXXXXX XXXXXXXX (x)	XX: X:
XXXXX XXXX XXXXXXX XXXXXXXX (x)	XX: X:
XXXXX XXXX XXXXXXXX	
XXXXX XXXX XXXXXXXX (x)	
XXXXX XXXXXXXX XX XXXXXXXX XX XXXXXXXX(x)	
XXXXX XXXXXXXX XX XXXXXXXX XX XXXXXXXX(x)	
XXXXX XXXXXXXX XX XXXXXXXX XX XXXXXXXX(x)	

Frame and engine type summary data plate (located under the steering wheel)

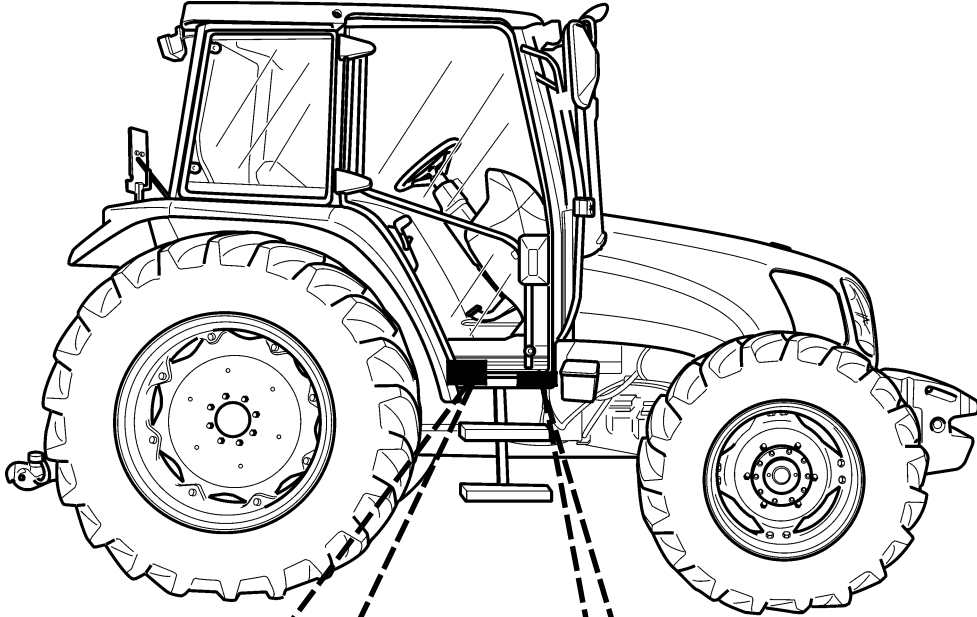
Tractor frame number identification data plate (stamped on the axle support under the hood).

★ 0000000000 ★

MDF1430A


Frame identification data plate.

FIAT	SAFETY STRUCTURE	TYPE/MODEL	Italy
	STRUCTURE TESTED		
SAC	O.E.C.O. REPORT-		France
	CSRW		
FRANCE MAROULAGE STRUCTURE	TR		Netherlands
	SF: TS - N'		
DK* GODKENDT AF DIREKTØREN FOR ARBEJDSLØSNING*	VEHICLE WEIGHT FOR SAE TEST	Kg	LB
	STRUCTURE SERIAL	N'	

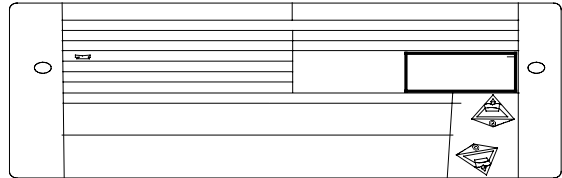


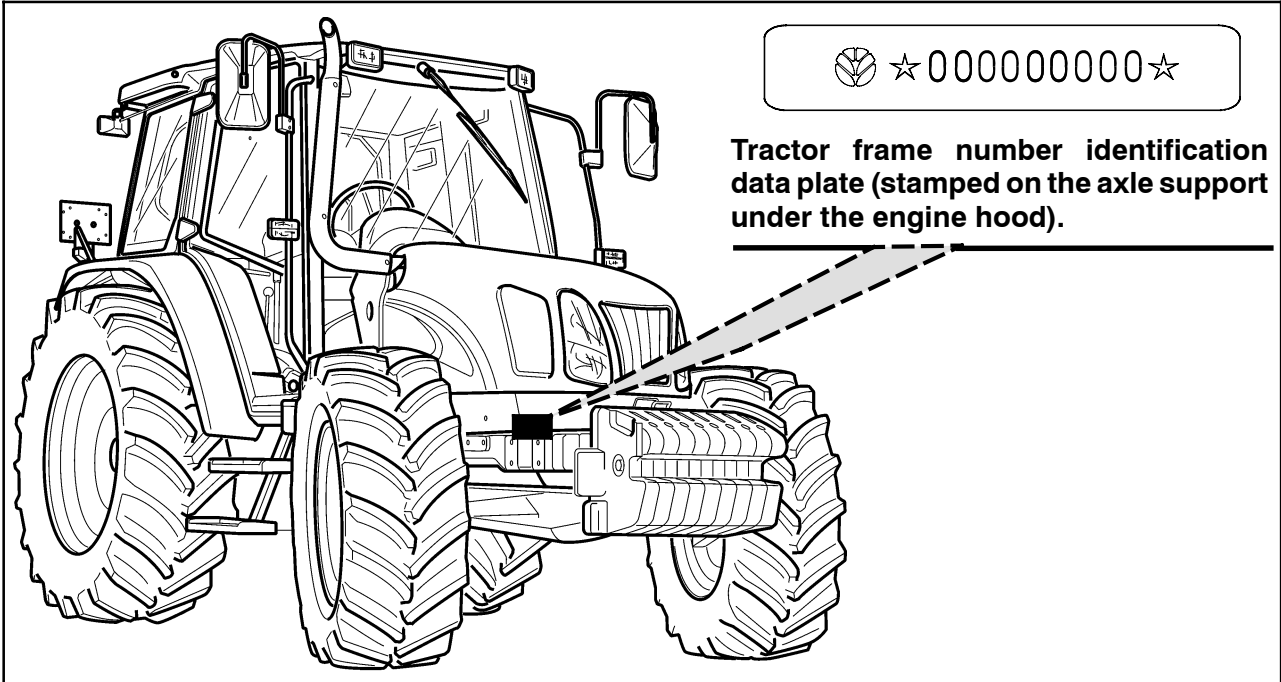
MDF0867A

Frame and engine type identification data plate (inside the cab).

CNH EUROPE HOLDING S.A. MADE IN ITALY	
XXXX	CE  MP04
XXXXXXXXXXXX	
XXXXX XXXXXXXXXXXXXXX	
XXXXX XXXXX XXXXXXXXXXX (x)	
XXXXX XXXX XXXXXXX XXXXXXX (x)	XX: X:
XXXXX XXXX XXXXXXX XXXXXXX (x)	XX: X:
XXXXX XXXX XXXXXXXXXXX	
XXXXX XXXX XXXXXXX (x)	
XXXXX XXXXXXX XX XXXXXXX XX XXXXXXX(x)	
XXXXX XXXXXXX XX XXXXXXX XX XXXXXXX(x)	
XXXXX XXXXXXX XX XXXXXXX XX XXXXXXX(x)	

Cab identification data plate.

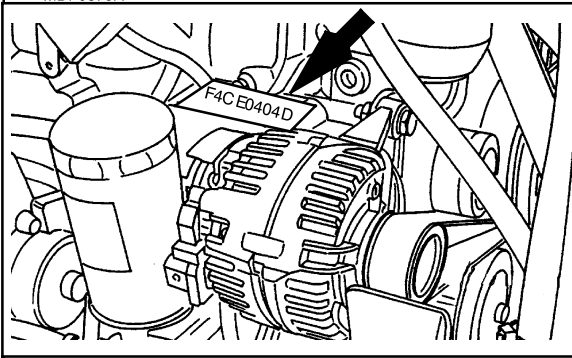




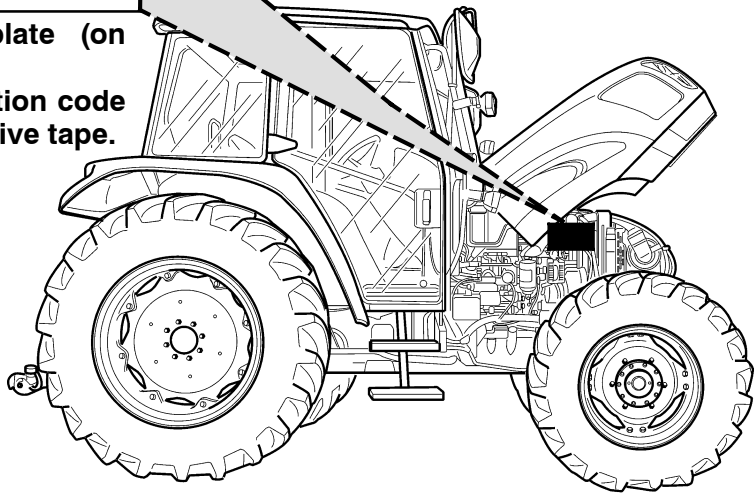
☆ 000000000 ☆

Tractor frame number identification data plate (stamped on the axle support under the engine hood).

MDF0879A



Engine identification data plate (on engine body).
NOTE: The stamped identification code is covered by protective adhesive tape.



MDF0869A

IMPORTANT ECOLOGICAL CONSIDERATIONS

Soil, air and water are essential elements for agriculture and for life in general. If local legislation does not control the treatment of certain substances, the production of which is necessitated by advanced technologies, products derived from chemical and petrochemical products must be used and disposed of according to the rules of common sense.

The following recommendations may be of help:

- Find out what the relevant legislation in your country stipulates.
- Ask your suppliers of lubricants, oils, fuels, anti-freeze, detergents, etc. for information on the effects of these products on humans and the environment and for instructions concerning their use, storage and disposal. In many cases, local agricultural consultants will be able to provide assistance.

RECOMMENDATIONS

1. Avoid using unsuitable, pressurized filling systems or fuel cans when filling tanks, as these may cause considerable spillage and leakage of liquids.
2. As a general rule, do not allow liquid fuels, lubricants, acids, solvents, etc., to come into contact with the skin. The majority of these products contain substances that are potential health hazards.
3. Modern lubricants contain additives. Do not burn contaminated fuel oils and/or oils used in conventional heating systems.
4. Avoid spillage when transferring used engine cooling liquids, engine and transmission lubricants, hydraulic oils, brake fluids, etc.. Never mix used brake oil with fuel oil, or fuel oil with lubricants. Store safely until suitable disposal can be arranged according to national legislation or local regulations.
5. Modern anti-freeze liquids and solutions, e.g. anti-freeze and other additives, must be replaced every two years. They must not be left to be absorbed into the ground, but must be collected and disposed of in a suitable manner.
6. Do not open the air conditioning systems to carry out work. These systems contain gas that must not be released into the atmosphere. Contact your dealer or specialized personnel, who are equipped with the appropriate equipment and are authorized to re-fill the system.
7. Any leakage or defect in the engine cooling or hydraulic systems must be repaired immediately.
8. Do not increase the pressure in pressurized systems, as this may cause component parts to burst.
9. When welding, make sure that hoses are properly protected as sparks or molten material may puncture or weaken the tubes and sleeves, resulting in leakage of oil, cooling liquid, etc.
10. Do not adjust the setting of the fuel delivery system as this will alter the emission of exhaust fumes.

NOTE: *The engines installed on the tractors comply with anti-pollution legislation.*

PRECAUTIONARY STATEMENTS

PERSONAL SAFETY



This is the safety alert symbol. It is used to potential personal injury hazards. Obey all safety messages that follow this symbol to avoid possible death or injury.

Throughout this manual and on machine decals, you will find the signal words **DANGER**, **WARNING**, and **CAUTION** followed by special instructions. These precautions are intended for the personal safety of you and those working with you.

Read and understand all the safety messages in this manual before you operate or service the machine.



DANGER



DANGER indicates a hazardous situation which, if not avoided, will result in death or serious injury. The color associated with Danger is RED.



WARNING



WARNING indicates a hazardous situation which, if not avoided, could result in death or serious injury. The color associated with Warning is ORANGE.



CAUTION



CAUTION used with the safety alert symbol, indicates a hazardous situation which, if not avoided, could result in minor or moderate injury. The color associated with Caution is YELLOW.

FAILURE TO FOLLOW THE DANGER, WARNING, AND CAUTION MESSAGES COULD RESULT IN DEATH OR SERIOUS INJURY.

MACHINE SAFETY

NOTICE: Notice indicates a situation which, if not avoided, could result in machine or property damage. The color associated with Notice is BLUE.

Throughout this manual you will find the signal word Notice followed by special instructions to prevent machine or property damage. The word Notice is used to address practices not related to personal safety.

INFORMATION

NOTE: Note indicates additional information which clarifies steps, procedures, or other information in this manual.

Throughout this manual you will find the signal word Note followed by additional information about a step, procedure, or other information in the manual. The word Note is not intended to address personal safety or property damage.

GENERAL PRECAUTIONS

The machine is designed and produced exclusively for agricultural use.

All other use will be considered to be contrary to the use specified by CNH AMERICA LLC, who cannot be held liable for damage to property or the machine, or for personal injuries which may result.

Persons who risk improper use will therefore assume the responsibility for any consequences arising from such use.

Compliance with the instructions for use, maintenance and repairs described in this manual, are the essential preconditions for the use specified by CNH AMERICA LLC.

The machine must only be used, serviced or repaired by personnel trained in the relevant working methods and safety regulations and who have been authorized to work on the machine.

The user must also observe the rules concerning general safety and accident prevention, including the Highway Code when driving on public highways.

Any arbitrary modifications made to this machine will release CNH AMERICA LLC from any liability resulting from damage or injury.

CNH AMERICA LLC and all its distribution organizations, inclusive of, but not restricted to, national, regional or local distributors, cannot be held liable for damage resulting from the malfunction of parts and/or components not approved by CNH AMERICA LLC.

Attention: *The fuel system and engine on your machine are designed and built to government emissions standards. Tampering by dealers, customers, operators and users is **strictly prohibited by law**. Failure to comply could result in government fines, rework charges, invalid warranty, legal action and possible confiscation of the machine until rework to original condition is completed. Engine service and/or repairs must be done by a certified technician only!*

Under no circumstances will a guarantee be issued for products made or sold by CNH AMERICA LLC that are damaged as a result of the malfunction of parts and/or components not approved by CNH AMERICA LLC.

OPERATOR PROTECTIVE STRUCTURE



Your machine is equipped with an operator Protective Structure, such as: a Rollover Protective Structure (ROPS) or Falling Object Protective Structure (FOPS) or Cab with ROPS. A ROPS may be a cab frame or a two-posted or four-posted structure used for the protection of the operator to minimize the possibility of serious injury. The mounting structure and fasteners forming the mounting connection with the machine are part of the ROPS.

The Protective Structure is a special safety component of your machine.

DO NOT attach any device to the Protective Structure for pulling purposes. **DO NOT** drill holes to the Protective Structure.

The Protective Structure and interconnecting components are a certified system. Any damage, fire, corrosion or modification will weaken the structure and reduce your protection. If this occurs, the Protective Structure **MUST** be replaced so that it will provide the same protection as a new Protective Structure. Contact your dealer for Protective Structure inspection and replacement.

After an accident, fire, tip or roll over, the following **MUST** be performed by a qualified technician before returning the machine to field or job site operation:

- The Protective Structure **MUST** be replaced.
- The mounting or suspension for the Protective Structure, operator seat and suspension, seat belts and mounting components and wiring within the operator's protective system **MUST** be carefully inspected for damage.
- All damaged parts **MUST** be replaced.

DO NOT WELD, DRILL HOLES, ATTEMPT TO STRAIGHTEN OR REPAIR THE PROTECTIVE STRUCTURE. MODIFICATION IN ANY WAY CAN REDUCE THE STRUCTURAL INTEGRITY OF THE STRUCTURE WHICH COULD CAUSE DEATH OR SERIOUS INJURY IN THE EVENT OF FIRE, TIP, ROLLOVER, COLLISION OR ACCIDENT.

Failure to comply could result in death or serious injury.

Thank you so much for reading.
Please click the “Buy Now!”
button below to download the
complete manual.



After you pay.

You can download the most
perfect and complete manual in
the world immediately.

Our support email:

ebooklibonline@outlook.com