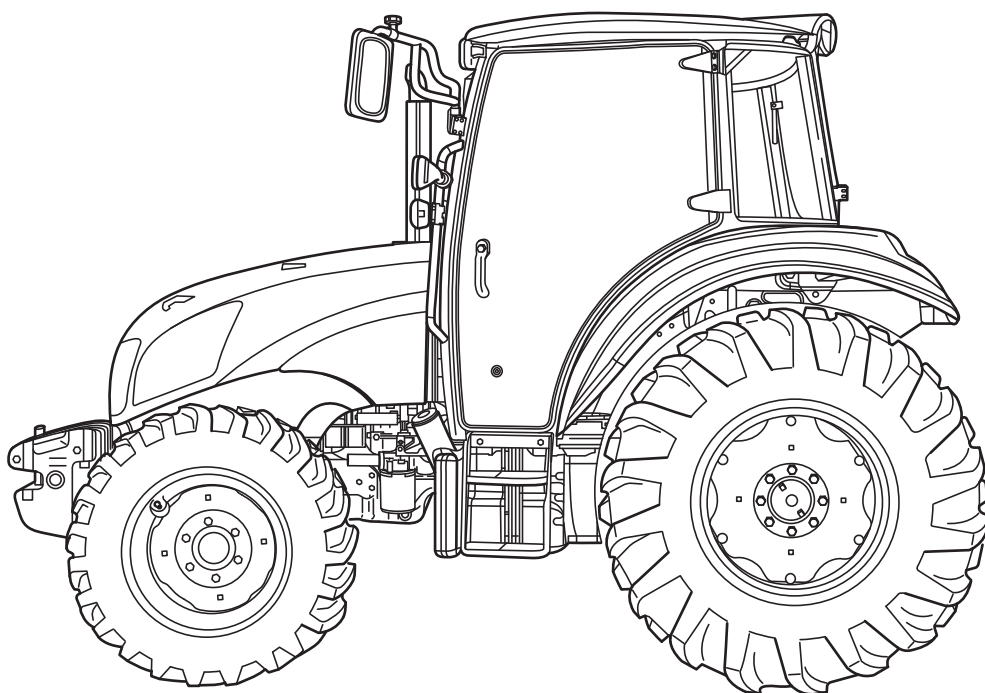


ORIGINAL INSTRUCTIONS

OPERATOR'S MANUAL

T4.75

Tractors



Part Number 84343400

1st edition English
February 2011



SECTION SUMMARY

- 1 - Introduction and safety measures**
- 2 - General information, controls and instruments**
- 3 - Field operation**
- 4 - Lubrication and Maintenance**
- 5 - Troubleshooting**
- 6 - Vehicle storage**
- 7 - Accessories**
- 8 - Specifications and Data**
- 9 - Delivery report**
- 10 - Alphabetical Index**

TO THE OWNER

This manual contains information concerning the adjustment and maintenance of your new equipment. You have purchased a dependable machine, but only by proper care and operation can you expect to receive the performance and long service built into this equipment. Please have all operators read this manual carefully and keep it available for ready reference.

Your New Holland dealer will instruct you in the general operation of your new equipment. (Refer to the 'Delivery Report' at the back of this manual.) Your dealer's staff of factory-trained service technicians will be glad to answer any questions that may arise regarding the operation of your machine. New Holland Top Service is also available. Call 1-866-NEWHLND (1-866-639-4563) or email na.topservice@cnh.com

Your New Holland dealer carries a complete line of genuine New Holland service parts. These parts are manufactured and carefully inspected to insure high quality and accurate fitting of any necessary replacement parts. Be prepared to give your dealer the model and product identification number of your new equipment when ordering parts. Locate these numbers now and record them below. Refer to the 'General Information' section of this manual for the location of the model and product identification numbers of your machine.

PLEASE RECORD THE FOLLOWING INFORMATION

MODEL _____

PRODUCT IDENTIFICATION NUMBER (PIN) _____



This is the safety alert symbol. It is used with and without signal words to alert you to potential personal injury hazards. Obey all safety messages that follow this symbol to avoid possible death or injury.

1

WARNING

Illustrations in this manual may show protective shielding open or removed to better illustrate a particular feature or adjustment.

Replace all shields before operating the machine. Failure to comply could result in death or serious injury.

ENGINE TAMPERING STATEMENT:

ATTENTION: The fuel system and engine on your machine are designed and built to government emissions standards. Tampering by dealers, customers, operators and users **is strictly prohibited by law**. Failure to comply could result in government fines, rework charges, invalid warranty, legal action and possible confiscation of the machine until rework to original condition is completed. Engine service and/or repairs must be done by a certified technician only!

IMPROVEMENTS

CNH America LLC is continually striving to improve its products. We reserve the right to make improvements or changes when it becomes practical and possible to do so, without incurring any obligation to make changes or additions to the equipment sold previously.

CONTENTS

SECTION 1

General Information and Safety	1-1
Product identification	1-2
Ecology and the Environment	1-4
Always work safely	1-5
Working safely	1-6
Safety decals	1-12
Guards and safety covers	1-16
Tractor noise level information sheet	1-18
Tractors main components	1-19

SECTION 2

General notes, controls and instruments	2-1
Analog control panel	2-2
Light control lever	2-9
Operating controls	2-10
Cab	2-20
Transmission (8 X 8) 18.64/24.35 mph (30/40 km/h)	2-30, 2-31
Transmission (12 X 12) 18.64/24.35 mph (30/40 km/h)	2-34, 2-35
Transmission (20 X 20) 18.64/24.35 mph (30/40 km/h)	2-40, 2-41

SECTION 3

Field operation	3-1
Starting and stopping	3-2
Brakes	3-6
Mechanical 4WD	3-9
Electro hydraulically controlled four-wheel drive	3-10
Differential lock	3-11
Limi-Slip front differential lock	3-12
Power Take- Off	3-13
Hydraulic lift with mechanical control	3-16
Rear three-point linkage	3-18
Implement linkage points	3-21
Rear remote auxiliary control valves	3-25
Front 2 WD wheel track adjustment	3-26
4WD wheel track adjustment	3-29
Tires	3-35
Metal ballast	3-46
Liquid ballasting	3-47
Permitted maximum weights	3-50

SECTION 4

Lubrication and maintenance	4-1
Running in period	4-2
Fuelling the tractor	4-3
Access for inspection and maintenance	4-7
Lubrication and maintenance table	4-8
Instrument panel warning lights	4-8
Flexible maintenance	4-10
EVERY 10 HOURS OF OPERATION	4-17
EVERY 50 HOURS OF OPERATION	4-18
EVERY 100 HOURS OF OPERATION	4-20
EVERY 300 HOURS OF OPERATION	4-22
EVERY 500 HOURS OF OPERATION	4-25
EVERY 1200 HOURS OR EVERY YEAR (WHICHEVER OCCURS FIRST)	4-28
EVERY 1200 HOURS OF WORK OR EVERY 2 YEARS (WHICHEVER OCCURS FIRST)	4-29
EVERY 1800 HOURS OF OPERATION	4-34
Electrical System	4-35
Fuelling	4-46

SECTION 5

Troubleshooting, causes and solutions

SECTION 6

Storing the tractor

SECTION 7

Accessories	7-1
Mechanically controlled front hydraulic lift	7-4
Towing equipment	7-2
Joystick	7-11

SECTION 8

Specifications and data

SECTION 9

Delivery Report

SECTION 10

Alphabetical index

CALIFORNIA

Proposition 65 Warning

Diesel engine exhaust and some of its constituents are known to the State of California to cause cancer, birth defects, and other reproductive harm.

Battery posts, terminals and related accessories contain lead and lead compounds. **Wash hands after handling.**

Electromagnetic Interference (EMC)

Interference may arise as a result of add-on equipment which may not necessarily meet the required standards. As such interference can result in serious malfunction of the unit and/or create unsafe situations, you must observe the following:

- The maximum power of emission equipment (radio, telephones, etc.) must not exceed the limits imposed by the national authorities of the country where you use the machine.
- The electro-magnetic field generated by the add-on system should not exceed 24 V/m at any time and at any location in the proximity of electronic components.
- The add-on equipment must not interfere with the functioning of the on board electronics.

Failure to comply with these rules will render the New Holland warranty null and void.

SECTION 1

GENERAL INFORMATION AND SAFETY

SPARE PARTS

“Non-original” spare parts have not been tested or authorised by the Manufacturer.

Installation and/or use of such products may adversely affect the tractor’s design specifications, thereby compromising operational safety. The manufacturer cannot be held responsible for any damage resulting from the use of “non-original” spare parts.

No modifications may be made to the tractor without written authorisation from the Manufacturer.

WARRANTY

The tractor is guaranteed in accordance with current legislation in your country and in line with contractual agreements reached with the dealer at the time of sale.

However, the warranty is no longer valid if the rules and instructions for the use and maintenance of the tractor, described in this Manual, are not observed.

CLEANING THE TRACTOR

Your tractor is an advanced machine, fitted with an electro-hydraulic control system. Care must be taken when cleaning the tractor, especially if a pressurised water cleaner is used.

- When using a pressure washer, never stand too close to the tractor or direct the water jet on electrical components, seals or intake openings, etc..
- Never direct jets of cold water at the hot engine or exhaust. See also Section 4 (Recommendations for bodywork maintenance).

PRODUCT IDENTIFICATION

Serial numbers identify the tractor and its main components. The identification data must be supplied by the customer to the dealer for requests for spare parts or service operations. Identification data is of fundamental importance in the event of theft of the tractor. The location of the various identification data is shown below.

Tractor identification plates with cab

A - Tractor chassis frame

The tractor's frame number is stamped on the right front support-hand side.

Record the number below

No. _____

B - Cab identification plate

The plate is on the rear of the cab on the left-hand side.

Record the number below

No. _____

C - Tractor type-approval summary data plate

The plate is on the rear of the seat inside the cab on the left-hand side.

Record the number below

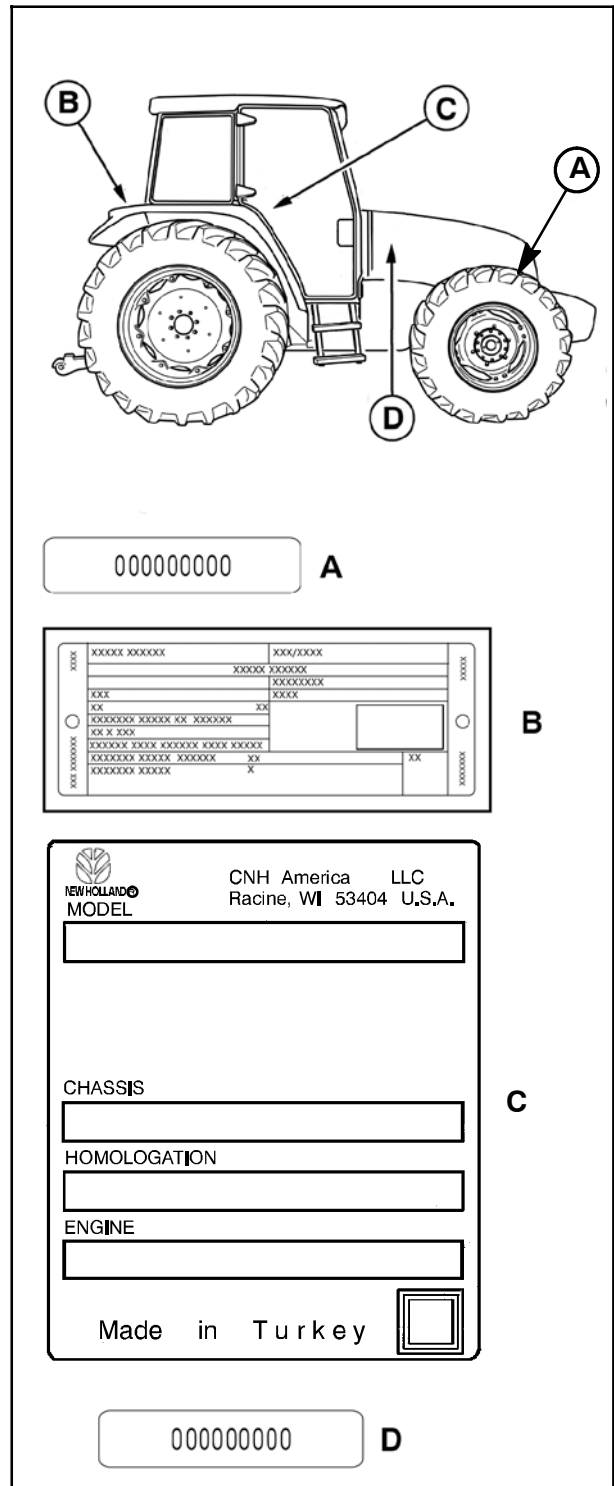
No. _____

D - Engine identification plate

The serial number of the engine fitted on the tractor is stamped on the left-hand side of the engine body near the hydraulics pumps.

Record the number below

No. _____



Tractor Identification plates with roll bar

A - Tractor chassis frame

The tractor's frame number is stamped on the right hand-side front support.

Record the number below

No.

B - Roll bar identification plate

The plate is inside the left-hand upright of the frame.

Record the number below

No.

C - Tractor type-approval summary data plate

The plate is on the rear of the seat on the left-hand side.

Record the number below

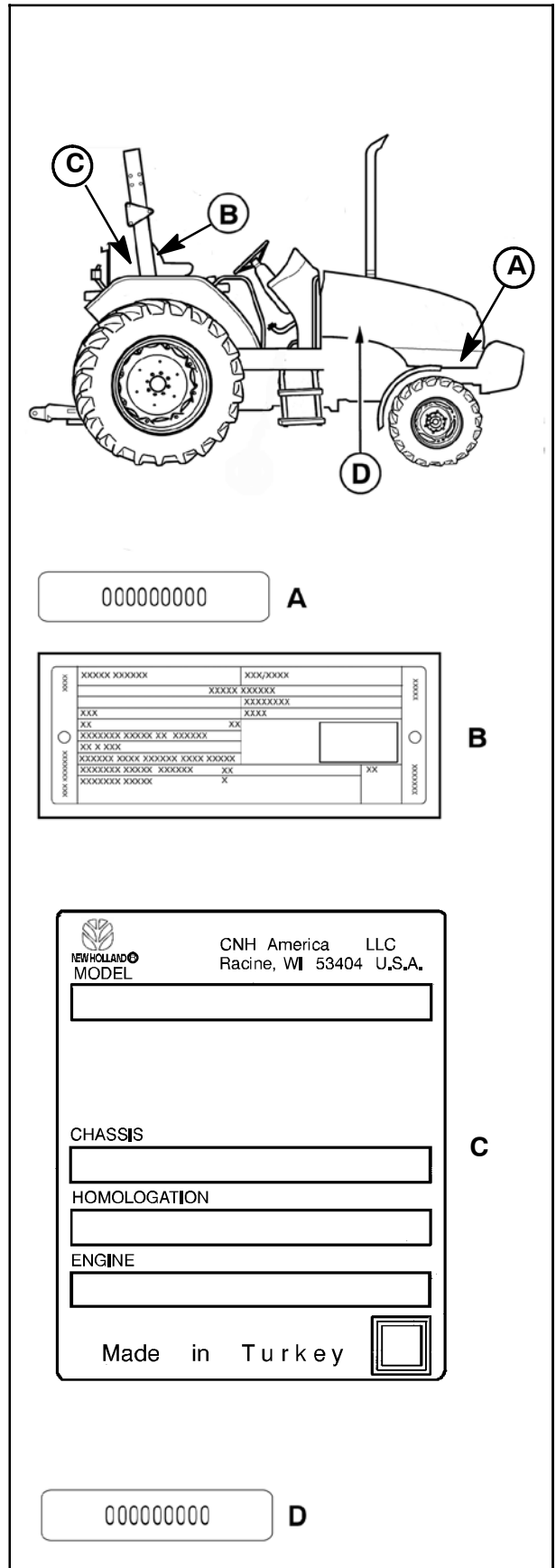
No.

D - Engine identification plate

The serial number of the engine fitted on the tractor is stamped on the left-hand side of the engine body near the hydraulics pumps.

Record the number below

No.



ECOLOGY AND THE ENVIROMENT

Soil, air and water are essential elements for agriculture and for life in general. If local legislation does not control the treatment of certain substances, the production of which is necessitated by advanced technologies, products derived from chemical and petrochemical products must be used and disposed of according to the rules of common sense.

The following recommendations may be of help:

- Find out what the relevant legislation in your country stipulates.
- Ask your suppliers of lubricants, oils, fuels, anti-freeze, detergents, etc.. for information on the effects of these products on humans and the environment and for instructions concerning their use, storage and disposal. In many cases, local agricultural consultants will be able to provide assistance.

SUGGESTIONS

1. Avoid using unsuitable, pressurised filling systems or fuel cans when filling tanks, as these may cause considerable spillage and leakage of liquids.
2. As a general rule, do not allow liquid fuels, lubricants, acids, solvents, etc., to come into contact with the skin. The majority of these products contain substances that are potential health hazards.
3. Modern lubricants contain additives. Do not burn contaminated fuel oils and/or oils used in conventional heating systems.
4. Avoid spillage when transferring used engine cooling liquids, engine and transmission lubricants, hydraulic oils, brake fluids, etc.. Never mix used brake oil with fuel oil, or fuel oil with lubricants. Store safely until suitable disposal can be arranged according to national legislation or local regulations.
5. Modern anti-freeze liquids and solutions, e.g. anti-freeze and other additives, must be replaced every two years. They must not be left to be absorbed into the ground, but must be collected and disposed of in a suitable manner.
6. Do not open the air conditioning systems to carry out work. These systems contain gas which must not be released into the atmosphere. Contact your dealer or specialised personnel, who are equipped with the appropriate equipment and are authorised to refill the system.
7. Any leakage or defect in the engine cooling or hydraulic systems must be repaired immediately.
8. Do not increase the pressure in pressurised systems, as this may cause component parts to burst.
9. When welding, make sure that hoses are properly protected as sparks or molten material may puncture or weaken the tubes and sleeves, resulting in leakage of oil, cooling liquid, etc..
10. Do not adjust the setting of the fuel delivery system as this will alter the emission of exhaust fumes.

NOTE: THE ENGINES INSTALLED ON THE TRACTORS COMPLY WITH ANTI-POLLUTION LEGISLATION.

ALWAYS WORK SAFELY

Personal safety



This is the safety alert symbol. It is used to alert you to potential personal injury hazards. Obey all safety messages that follow this symbol to avoid possible death or injury.

Throughout this manual and on machine decals, you will find the signal words DANGER, WARNING, and CAUTION followed by special instructions. These precautions are intended for the personal safety of you and those working with you.

Read and understand all the safety messages in this manual before you operate or service the machine.

⚠ DANGER Indicates a hazardous situation which, if not avoided that, will result in death or serious injury. The color associated with DANGER is RED.

⚠ WARNING indicates a hazardous situation which, if not avoided. Could result in death or serious injury. The color associated with WARNING is ORANGE.

⚠ CAUTION used with the safety alert symbol, indicates a hazardous situation which, if not avoided, could result in minor or moderate injury. The color associated with CAUTION is YELLOW.

FAILURE TO FOLLOW DANGER, WARNING, AND CAUTION MESSAGES COULD RESULT IN DEATH OR SERIOUS INJURY.

MACHINE SAFETY

NOTICE: Notice indicates a situation which, if not avoided, could result in machine or property damage. The color associated with Notice is BLUE

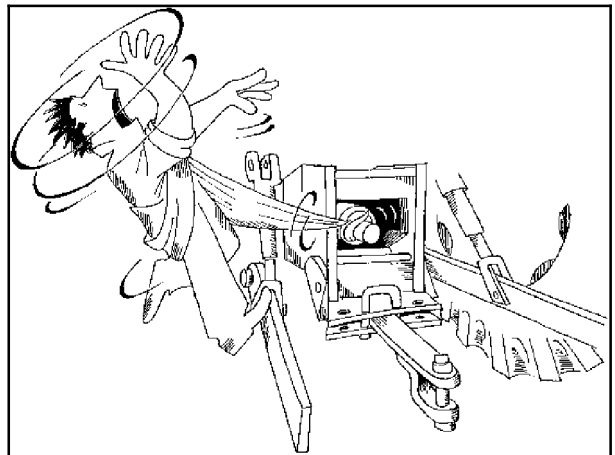
Throughout this manual you will find the signal word Notice followed by special instructions to prevent machine or property damage. The word Notice is used to address practices not related to personal safety.

NOTE: Note indicates additional information which clarifies steps, procedures, or other information in this manual.

Throughout this manual you will find the word Note followed by additional information about a step, procedure, or other information in the manual. The word Note is not intended to address personal safety or property damage.

WORKING SAFELY

1. During the manufacturing of this tractor, every step has been taken to ensure safe operation. However, the best way to avoid accidents is to exercise caution at all times. Once the accident has already happened it is too late to remember what steps should have been taken.
2. Read this manual carefully before starting, using, carrying out maintenance, refuelling or performing any other type of operation on the tractor.
3. The time spent reading this manual will allow you to get to know your tractor, thereby saving time and effort. This will also help prevent accidents from taking place.
4. Read all the safety decals on the machine and follow the instructions thereon before starting, operating, refuelling or carrying out maintenance on the machine. Promptly replace any decals that are damaged, lost or illegible.
Clean the decals if they are covered by mud or debris.
5. Remember that the tractor is exclusively designed for agricultural use. Any other use will require prior authorisation from NEW HOLLAND.
6. It is advisable to keep a first aid kit on hand.
7. The tractor must only be used by responsible personnel, trained in tractor use and authorised to operate the machine.
8. Do not alter the injection system calibration in an attempt to increase maximum engine speed.
9. Do not wear loose clothing that may be trapped in moving parts.
Check that all rotating parts connected to the power take-off are correctly protected.



4

SECTION 1 - GENERAL INFORMATION AND SAFETY

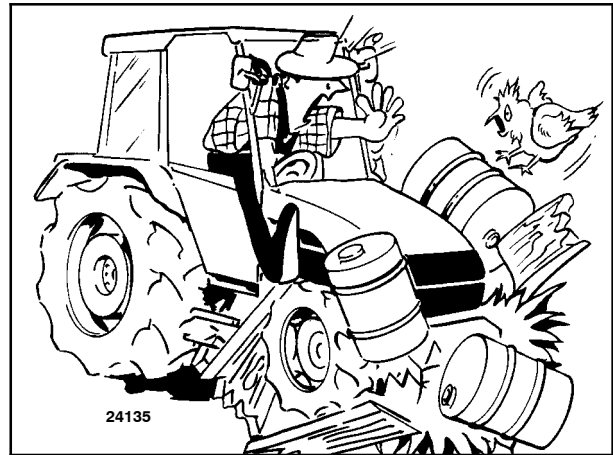
10. Do not alter the calibration of the pressure relief valves in the various hydraulic circuits (hydrostatic steering, hydraulic lift, auxiliary control valves, etc.).

11. Avoid using the tractor in unsuitable physical conditions, stop work instead.

12. Enter and leave the tractor using the steps and handles provided. Keep these fittings free of mud and debris.

13. Always operate with the cab or roll bar correctly and securely fitted on the tractor: periodically check that the fittings are not loose and that all parts of the structure are free from any damage and deformation. Do not modify the roll bar by welding parts, drilling holes, etc., as this could adversely affect the rigidity of the structure.

17. Never start or manoeuvre the tractor unless seated in the driving position.



5

18. Before moving the tractor, always check that the area is free of bystanders or obstacles.

STARTING THE TRACTOR

14. Before starting the engine, check that the handbrake is on and that the gears and power take-off are disengaged, even if the tractor is fitted with a start-up safety device. Never disconnect the start-up safety switch. If the switch does not work correctly, contact your local dealer.

15. Before starting the engine, make sure that all attached implements are lowered to the ground.

16. Before starting the engine, check that all covers and guards are correctly in position (roll bar, hood side panels, power take-off guard, front axle transmission shaft cover, etc.).

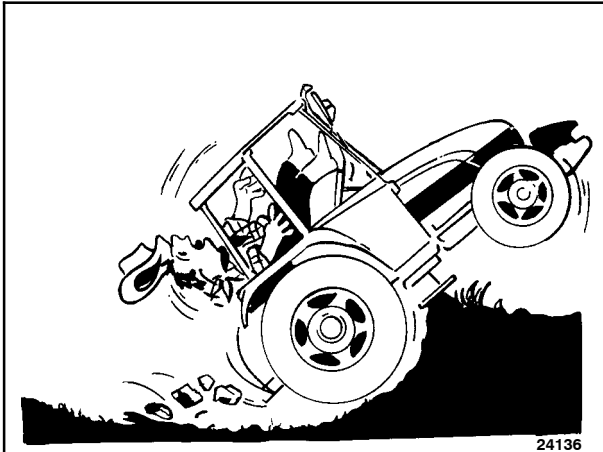


6

19. Never run the engine in a closed space without ensuring adequate ventilation. Exhaust fumes are damaging to the health and can be lethal.

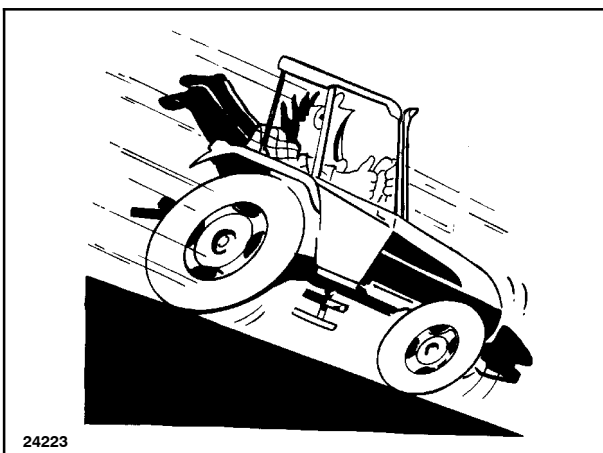
USING THE TRACTOR

20. Select the most suitable wheel setting for the work in hand, i.e.: the setting that provides the best stability.



7

21. Engage the clutch slowly: if engaged too quickly, especially when the tractor is getting out of a hole, ditch or operating on muddy ground or steep slopes, the tractor may overturn. Disengage the clutch immediately if the front wheels start to lift.



8

22. When travelling downhill, keep the tractor in gear. Never disengage the clutch and never leave the gears in neutral.

23. When the tractor is moving, the operator must remain correctly seated in the driving position.

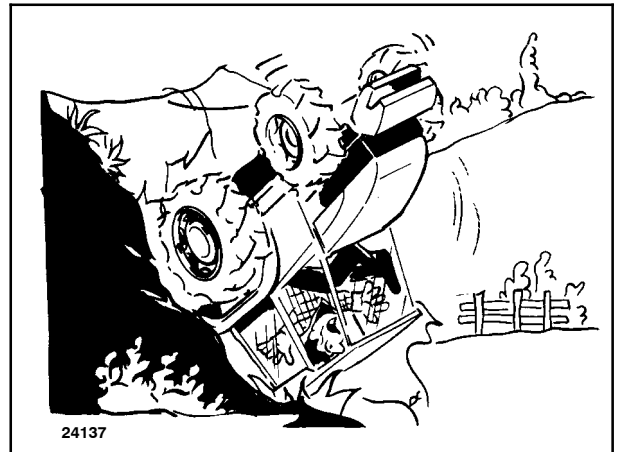
24. Never get on or off the tractor while in movement.

25. When using the brakes, press the pedal down slowly.

26. Avoid taking bends at high speeds.

27. Always use the tractor at a speed that will guarantee safe operation on the type of land being worked. When working on uneven ground, use maximum care to ensure proper stability.

28. If you have to work with the tractor on a gradient, for example on hillsides, drive at moderate speed especially when taking bends.



9

29. Proceed with maximum caution when working with the wheels near the edge of ditches or slopes.

30. When driving on public highways, observe the Highway Code.

Thank you so much for reading.
Please click the “Buy Now!”
button below to download the
complete manual.



After you pay.

You can download the most
perfect and complete manual in
the world immediately.

Our support email:

ebooklibonline@outlook.com