

OPERATOR'S MANUAL

T8.275

T8.300

T8.330

T8.360

T8.390

PIN ZCRC02583 and above

PIN ZCRC02586 and above

T8.420

PIN ZCRC02586 and above

Tractor

Part number 84480275

1st edition English

April 2013



Contents

1 GENERAL INFORMATION

Note to the owner.....	1-1
Engine tampering.....	1-2
Tractor intended use.....	1-3
Product identification	1-4
Manual storage	1-7
Machine orientation.....	1-8
Component identification	1-9
Electro-Magnetic Compatibility (EMC)	1-11

2 SAFETY INFORMATION

Safety rules.....	2-1
Safety rules - General	2-2
Safety rules - General maintenance safety	2-4
Safety rules - Wheels and tires	2-4
Safety rules - Driving on public roads and general transportation safety	2-4
Safety rules - Fire and explosion prevention	2-5
Safety rules - General battery safety	2-5
Safety rules - Instructional seat safety	2-6
Safety rules - Operator presence system	2-6
Safety rules - Power Take-Off (PTO)	2-6
Safety rules - Reflectors and warning lights	2-6
Safety rules - Seat belts	2-6
Safety rules - Roll Over Protective Structure (ROPS)	2-7
Safety rules - Cab protection	2-8
Safety rules - Air conditioning system	2-8
Safety rules - Personal Protective Equipment (PPE)	2-8
Safety rules - Do Not Operate tag	2-9
Safety rules - Hazardous chemicals	2-9
Safety rules - Utility safety	2-9
Safety rules - Electrical storm safety	2-9
Safety rules - Mounting and dismounting	2-10
Safety rules - Working at heights	2-10
Safety rules - Lifting and overhead loads	2-10
Safety rules - Implements, tools and trailers	2-11
Safety rules - Roll over and tip over	2-11
Ecology and the environment.....	2-13
Safety signs	2-14
Safety aspects.....	2-27
Fire extinguisher.....	2-34
Emergency exit.....	2-35
Wheel wedges.....	2-36

3 CONTROLS/INSTRUMENTS

ACCESS TO OPERATOR'S PLATFORM

Cab - Access/Exit.....	3-1
Lower step.....	3-2

OPERATOR'S SEAT

Overview	3-3
Control identification.....	3-4

INSTRUCTOR'S SEAT

Instructional seat	3-7
--------------------------	-----

FORWARD CONTROLS

Steering column	3-8
Front console	3-11
Pedal controls	3-13

LEFT-HAND SIDE CONTROLS

Emergency brake lever.....	3-16
----------------------------	------

RIGHT-HAND SIDE CONTROLS

Armrest console	3-17
Multi function handle	3-18
Engine speed control	3-24
Control panel	3-25
Remote valve controls.....	3-33
Joystick	3-34
Rear hitch controls	3-36
Armrest compartment	3-38
Adjusting the armrest console.....	3-40

REARWARD CONTROLS

Fender console	3-41
Automatic temperature controls	3-44
Automatic temperature control system	3-47
Ventilation	3-48

OVERHEAD CONTROLS

Interior lamps	3-50
----------------------	------

EXTERIOR CONTROLS

Rear fender.....	3-51
Front hitch	3-52

INSTRUMENT CLUSTER

Overview	3-53
----------------	------

Gauges	3-54
Status and warning icons	3-55
Upper display	3-58
Lower display	3-61
Keypad	3-63
Setup menu	3-65
Rear tire radius chart	3-71
Adjust menu	3-72
Performance instrumentation	3-79

4 OPERATING INSTRUCTIONS

COMMISSIONING THE UNIT

Before starting the engine	4-1
----------------------------------	-----

STARTING THE UNIT

Normal engine starting	4-4
Cold starting aids	4-8
Cold temperature operation	4-10

STOPPING THE UNIT

Stopping the engine	4-12
---------------------------	------

MOVING THE UNIT

FULL POWERSHIFT TRANSMISSION	4-14
Powershift transmission	4-14
Best practices for prolonged transmission life	4-15
Inching pedal and throttle	4-16
Powershift transmission controls	4-17
Upper display - Powershift transmission	4-20
Driving the Powershift vehicle	4-22
Setting default gears	4-27
Ground Speed Management (GSM)	4-29
CONTINUOUSLY VARIABLE TRANSMISSION (CVT)	4-36
Auto Command brake, pedal and throttle operation	4-36
Auto Command controls	4-40
Upper display	4-45
Auto Command operation	4-46
Driving the Auto Command transmission	4-51
Transmission messages	4-56
POWERSHIFT AND CVT TRANSMISSIONS	4-58
Mechanical Front Drive (MFD)	4-58
Differential lock system	4-62
Suspended axle	4-65
Ride control	4-72
Suspended cab	4-74
Constant engine speed	4-75
Engine power boost	4-77

Headland management system	4-78
----------------------------------	------

PARKING THE UNIT

Automatic park lock.....	4-84
--------------------------	------

5 TRANSPORT OPERATIONS

ROAD TRANSPORT

Tractor warning lamps.....	5-1
Safe transport speed	5-3

SHIPPING TRANSPORT

Securing the tractor for shipping	5-4
---	-----

RECOVERY TRANSPORT

Safety rules.....	5-5
Towing the tractor.....	5-6

6 WORKING OPERATIONS

GENERAL INFORMATION

Overview	6-1
----------------	-----

REAR POWER TAKE-OFF (PTO)

Safety rules.....	6-2
Connecting the Power Take-Off (PTO).....	6-6
Interchangeable Power Take-Off (PTO) shaft	6-7
Rear Power Take-Off (PTO) operation	6-13
Power Take-Off (PTO) fender switch operation	6-17
Auto Power Take-Off (PTO) operation.....	6-18

FRONT POWER TAKE-OFF (PTO)

Overview	6-21
Front Power Take-Off (PTO) operation.....	6-22

REAR HITCH

Identification	6-25
Link adjustment.....	6-26
Hitch high clearance adjustment	6-30
Hydraulic links	6-33
Sway limiter adjustment	6-35
Automatic telescoping stabilizers.....	6-36
Lower link block adjustment	6-38
Mechanical float adjustment.....	6-40

Hitch operation	6-41
Hitch remote switch operation	6-46
Position control operation	6-47
Load control operation	6-49
Slip control operation	6-51
Hitch set point	6-53

FRONT HITCH

Overview	6-55
Front hitch operation	6-56

DRAWBARS AND TOWING ATTACHMENTS

Safety rules	6-63
Drawbar capacity/position	6-63
Adjusting the drawbar	6-66

TRAILER HITCHES

Clevis and special drawbars	6-68
Automatic trailer hitch	6-70
Auto pickup hitch operation	6-73
Manual trailer hitch	6-75

AUXILIARY CONNECTIONS

Auxiliary power and lighting	6-77
Cab power connections	6-79
Radar connection	6-81

HYDRAULIC REMOTE CONTROL VALVES

Valve couplers and connections	6-82
Motor return circuit	6-85
Power beyond circuit	6-86
Flow capacity	6-87
Hydraulic transport lock	6-88
Operating the controls	6-89
Remote valve display screens	6-93
Remote hydraulic auto mode	6-97
Auto depth control	6-99
Joystick operation	6-101

BALLASTING THE TRACTOR

Guidelines	6-105
Tire load and inflation charts	6-114
Weights, cast metal	6-116
Wheel slip and power hop performance	6-128

MECHANICAL FRONT DRIVE (MFD) AXLES

Front axle identification	6-131
---------------------------------	-------

Tire combinations and tread positions.....	6-133
Steering and oscillation stops	6-138
Tread and fender settings - Dana heavy duty fixed front axles.....	6-141
Tread and fender settings - Dana heavy duty scissors suspended front axles...	6-142
Tread and fender settings - Dana 5.0 fixed front axles	6-143
Tread and fender settings - Dana 5.0 saddle suspended front axles	6-144
Tread and fender settings - New Holland 4.75 and 5.0 fixed front axles	6-145
Tread and fender settings - New Holland 4.75 and 5.0 saddle suspended front axles	6-148
Front fenders - Dana front axles - Dynamic fenders	6-151
Front fenders - New Holland front axles - Wide fenders, fixed or saddle suspended	6-157

REAR AXLE

Rear wheel installation	6-162
Rear wheel tread settings	6-165

7 MAINTENANCE

GENERAL INFORMATION

Safety rules.....	7-1
Maintenance guidelines	7-1
Opening the hood	7-3
Closing the hood	7-5
Filling the fuel tank	7-6
Battery access and service.....	7-7
Tire and rim service.....	7-9
Tractor jacking points.....	7-11
Capacities	7-13
Consumables - Engine oil	7-16
Consumables - Transmission/hydraulic system fluid	7-17
Consumables - Diesel fuel	7-17
Consumables - Coolant solutions	7-19
Electrical component location	7-20
Lamps and bulbs	7-25
Maintenance chart notes	7-26

MAINTENANCE CHART

Maintenance Chart	7-27
-------------------------	------

At warning message display

Air filter service icon/message.....	7-29
Fuel filter water separator	7-30
Hydraulic oil filter switch.....	7-31
Transmission oil filter switch.....	7-34

First 10 to 50 hours

Differential and planetary oil.....	7-37
-------------------------------------	------

Wheel bolt torque	7-38
Weight bolt torque	7-39

Every 10 hours or daily

Engine oil level	7-40
Transmission oil level.....	7-41
Engine coolant level	7-42
Engine auxiliary fuel filter.....	7-43
Air reservoir.....	7-44
Rear hitch and front axle	7-45

Every 50 hours or weekly

Engine primary fuel filter.....	7-46
---------------------------------	------

Every 100 hours

Front hitch	7-47
Front Power Take-Off (PTO) drive shaft.....	7-49

Every 300 hours

Battery water level (Note E)	7-50
Engine air intake hoses.....	7-52
Engine coolant level - deaeration tank	7-54
Wheel bolt torque	7-55
Weight bolt torque	7-56
Front axle (Note A)	7-57
Rear hitch (Note A)	7-61
Fuel tank.....	7-63
Differential and planetary oil level (Note B).....	7-64
Transmission oil pressure	7-66
Front Power Take-Off (PTO) oil level	7-67

Every 400 hours

Cab air filter.....	7-68
---------------------	------

Every 600 hours

Engine oil and filter	7-71
Engine coolant antifreeze protection	7-73
Engine coolant hoses and clamps.....	7-74
Engine primary fuel filter.....	7-77
Engine fuel pre-filter	7-80
Fuel system bleeding.....	7-83
Changeable Power Take-Off (PTO) internal splines.....	7-85
Diesel Exhaust Fluid (DEF)/AdBlue® in-line filter	7-86
Front Power Take-Off (PTO) oil and filter.....	7-88

Every 1000 hours or annually

Pneumatic brake system dryer	7-90
------------------------------------	------

Every 1200 hours or annually

Differential and planetary oil	7-91
Engine air filters	7-96
Engine air precleaner	7-100

Every 1500 hours

Transmission oil	7-102
Hydraulic oil filter	7-104
Transmission oil filter	7-105

Every 2000 hours

Engine coolant	7-106
----------------------	-------

Every 3000 hours

Engine valve adjustment (Note C)	7-108
--	-------

As required

Vehicle fire prevention	7-109
Cab air filter	7-110
Engine primary air filter	7-113
Grille screen and radiator area	7-116
Fuel tank vent filter	7-118
Transmission clutch and accumulator	7-119
Tire pressure	7-120
Fan belt	7-121
Remote valve collection bottle	7-127
Engine auxiliary fuel filter	7-128
Cab fabric and carpet	7-130
Seat belt	7-131

STORAGE

Preparing for storage	7-132
Removing from storage	7-133

ELECTRICAL SYSTEM

Radio or audio system	7-134
Battery removal and installation	7-135
Auxiliary battery connections	7-137
Headlight	7-138
Flood and work light	7-142
Grille work light	7-144
Fender tail light and warning light	7-146

Roof warning light	7-148
Roof work light.....	7-150
Belt line, roof or fender work light	7-152
High intensity work light	7-154
Rotating beacon light.....	7-156
Interior light	7-157

8 TROUBLESHOOTING

FAULT CODE RESOLUTION

Display warnings overview	8-1
Display warnings - Level 1	8-2
Display warnings - Level 2	8-5
Display warnings - Level 3	8-8
Display warnings - Level 4	8-10

SYMPTOM(S)

Engine symptoms	8-12
Transmission symptoms.....	8-14
Hydraulic symptoms	8-15
Hitch symptoms	8-16
Brake symptoms.....	8-17
Cab environment symptoms.....	8-18
Electrical power system symptoms.....	8-19

9 SPECIFICATIONS

Engine specifications	9-1
Power train specifications	9-2
Operating speeds.....	9-5
Vehicle dimensions and shipping weight	9-13
Maximum operating weight.....	9-20

10 ACCESSORIES

Farming system displays	10-1
Chemical tank mounting.....	10-2
Loader connection and operation	10-4
Trailer brake connections.....	10-5
General accessories.....	10-8

11 FORMS AND DECLARATIONS

Delivery report - owner copy	11-1
Delivery report - dealer copy	11-2
First service - owner copy	11-4
First service - dealer copy	11-6

1 - GENERAL INFORMATION

Note to the owner

This manual contains important information about the safe operation, adjustment and routine maintenance of your T8. series tractor. The manual is divided into 10 chapters as outlined in the table of contents. Refer to the index at the end of this manual for locating specific items about your tractor.

Do NOT operate or permit anyone to operate or service this machine until you or the other persons have read this manual. Use only trained operators who have demonstrated the ability to operate and service this machine correctly and safely.

This Operator's Manual is to be stored in the manual compartment behind the operator's seat in the vehicle. Make

sure this manual is in good condition. Contact your dealer to obtain additional manuals.

Your NEW HOLLAND AGRICULTURE dealer will instruct you in the general operation of your new equipment. Your dealer's staff of factory-trained service technicians will be glad to answer any questions that may arise regarding the operation of your machine. They will also provide any after-sales service you may need, and genuine NEW HOLLAND AGRICULTURE parts, your guarantee of quality and match.

New Holland Top Service is also available. Call 1-866-NEWHLND (1-866-639-4563) or email na.topservice@cnh.com.

Engine tampering

The fuel system and engine on your machine are designed and built to government emissions standards. Tampering by dealers, customers, operators, and users is strictly prohibited by law.

Failure to comply could result in government fines, rework charges, invalid warranty, legal action, and possible con-

fiscation of the machine until rework to original condition is completed. Engine service and/or repairs must be done by a certified technician only!

Tractor intended use

T8. series tractors with standard equipment and authorized attachments, are intended to be used for customary farming, land leveling and related agriculture operations (intended use). Installation of utility (dozer) blades, tile plows, or push bars on the tractor is not recommended. Any tractor damage resulting from the installation and/or use of such equipment is not covered by the tractor warranty.

Consult an authorized dealer or CNH America LLC on changes, additions or modifications that can be required for this machine to comply with various regulations and safety requirements. Unauthorized modifications will cause serious injury or death. Anyone making such unauthorized modifications is responsible for the consequences.

The tractor is not designed for light/heavy forestry applications; usage is prohibited for forestry applications.



Do not use this machine for any purpose or in any manner other than as described in the manual, decals, or other product safety information provided with the machine. These materials define the machine's intended use.

Use in any other way is considered as contrary to the intended use. The manufacture accepts no liability for any damage or injury resulting from this misuse and these risks must be born solely by the user.

Product identification

Tractor model and product identification number

Write your model number, product identification number (PIN) or serial number of major components on the lines provided. If needed, give these numbers to your dealer when you need parts or information for your machine.

		CNH America LLC Racine, WI 53404 U.S.A. Made In U.S.A.			
Type 1	EEC Number 2	Product Identification Number 3			
• Total Permissible Mass (*): 4 kg • Permissible Front Axle Load (*): 5 kg • Permissible Rear Axle Load (*): 6 kg (* Depending on the Tires)		Permissible Towable Mass: • Unbraked Towable Mass: 7 kg • Independently-Braked Towable Mass: 8 kg • Inertia-Braked Towable Mass: 9 kg • Towable Mass Fitted with an Assisted Braking System: (Hydraulic or Pneumatic): 10 kg			

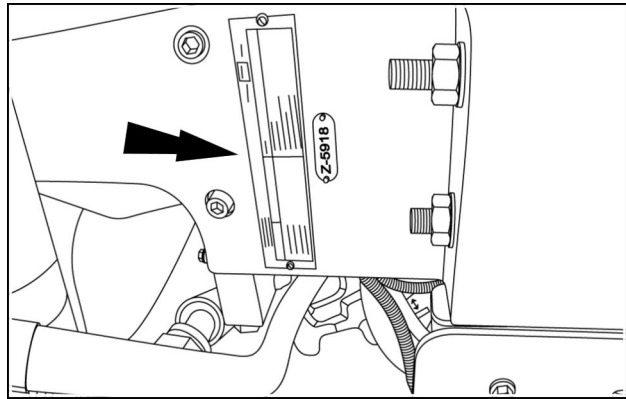
RCIL11CCH009EAA 1

1. Type	Permissible towable mass:
2. EEC number	• 7. Unbraked towable mass
3. Product identification number	• 8. Independently brakes towable mass
4. Total permissible mass	• 9. Inertia braked towable mass
5. Permissible front axle load	• 10. Towable mass fitted with an assisted braking system (hydraulic or pneumatic)
6. Permissible rear axle load	

Model :

Serial number:

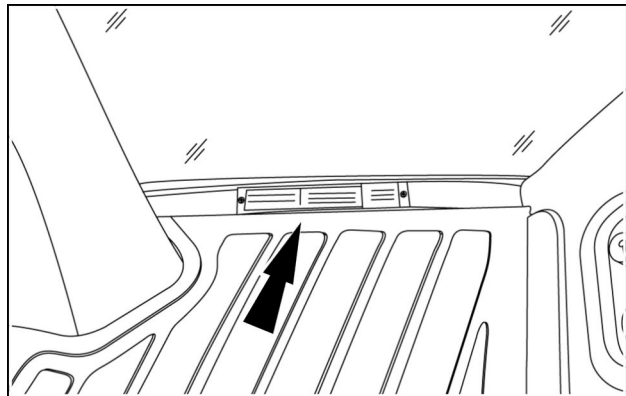
NOTE: Located on right hand front casting. Pin plate may be mounted vertically or horizontally.



RCPH11CCH010AAB 2

Roll Over Protective System (ROPS) serial number

NOTE: Located on the right hand cab floor.



RCPH11CCH014AAB 3

Thank you so much for reading.
Please click the “Buy Now!”
button below to download the
complete manual.



After you pay.

You can download the most
perfect and complete manual in
the world immediately.

Our support email:

ebooklibonline@outlook.com