

L725

L735

L745

L755

L765

L775

L785

L795

Farm Loader

OPERATOR'S MANUAL

Part number 84559800

1st edition English

October 2011

(Ref 12165810)



Contents

1 GENERAL INFORMATION

Note to the Owner	1-1
International symbols	1-3
Product Identification	1-4
Machine orientation	1-5
Definition	1-6

2 SAFETY INFORMATION

Safety rules and signal word definitions	2-1
Safety rules - Personal safety	2-2
Personal safety	2-3
Safety Decals	2-6
Foreword - Ecology and the environment	2-11

3 OPERATING INSTRUCTIONS

COMMISSIONING THE UNIT

Machine preparation	3-1
Hydraulic controls	3-3
Installing the loader	3-6
Removing the loader	3-8
Re-installing the loader	3-10
Check list	3-12

4 WORKING OPERATIONS

GENERAL INFORMATION

Operating the loader	4-1
Soft-ride loader suspension	4-5
Remove bucket or attachment (SSL style)	4-6
Install bucket or attachment (SSL style)	4-7
Remove bucket or attachment (EURO Style)	4-9
Install bucket or attachment (EURO style)	4-11
Operation with grapple fork attachment	4-12
Operation with H.D. bale grip	4-14

5 MAINTENANCE

GENERAL INFORMATION

Torque - Minimum Tightening Torques for Normal Assembly	5-1
Torque - Standard torque data for hydraulics	5-4
Lubrication points	5-6
Maintenance	5-6
Recommended lubricants	5-10

6 TROUBLESHOOTING

SYMPTOM(S)

Basic instructions	6-1
HITCH AND WORKING TOOL - Troubleshooting.....	6-1

7 SPECIFICATIONS

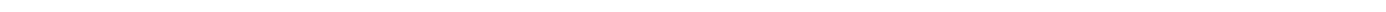
Loader Specifications.....	7-1
----------------------------	-----

8 ACCESSORIES

Optional attachments.....	8-1
---------------------------	-----

9 FORMS AND DECLARATIONS

Delivery report - Owner Copy	9-1
Delivery report - Dealer Copy	9-3



1 - GENERAL INFORMATION

Note to the Owner

This manual contains information concerning the adjustment and maintenance of your new equipment. You have purchased a dependable machine, but only by proper care and operation can you expect to receive the performance and long service built into this equipment. Please have all operators read this manual carefully and keep it available for ready reference.

Your CASE IH AGRICULTURE dealer will instruct you in the general operation of your new equipment. (Refer to the 'Delivery Report' at the back of this manual.) Your dealer's staff of factory-trained service technicians will be glad to answer any questions that may arise regarding the operation of your machine. Case IH Max Service is also available. Call 1-877-4CASEIH (1-877-422-7344) or email maxservice.na@cnh.com.

Your CASE IH AGRICULTURE dealer carries a complete line of genuine CASE IH AGRICULTURE service parts. These parts are manufactured and carefully inspected to insure high quality and accurate fitting of any necessary replacement parts. Be prepared to give your dealer the model and product identification number of your new equipment when ordering parts. Locate these numbers now and record them below. Refer to the 'General Information' section of this manual for the location of the model and product identification numbers of your machine.

PLEASE RECORD THE FOLLOWING INFORMATION


Loader Model

Product Identification Number (PIN)

Date Purchased

Attachment Model

Attachment Model

	<p>This is the safety alert symbol. It is used with and without signal words to alert you to potential personal injury hazards. Obey all safety messages that follow this symbol to avoid possible death or injury.</p>
---	---

WARNING

Illustrations in this manual may show protective shielding open or removed to better illustrate a particular feature or adjustment.

Replace all shields before operating the machine.

Failure to comply could result in death or serious injury.

W0012A

IMPROVEMENTS

CNH America LLC is continually striving to improve its products. We reserve the right to make improvements or changes when it becomes practical and possible to do so, without incurring any obligation to make changes or additions to the equipment sold previously.

Intended use

The loader was designed to mount on CASE IH AGRICULTURE approved tractors. The loader is designed to load and move materials with a variety of buckets and approved CASE IH AGRICULTURE attachments.

DO NOT use this machine for any purpose or in any manner other than as described in the manual, decals, or other product safety information provided with the machine. These materials define the machine's intended use.

Use only approved accessories and attachments designed for your machine. Consult your dealer on changes, additions or modifications that may be required for your machine. Do not make any unauthorized modifications to your machine.

Installation and operation instructions for certain hydraulic valve sets, attachments and accessories may not be included in this operator's manual. Use the publication received with the specific item or in the case of hydraulic valves, refer to the tractor operator's manual.

NOTICE: *Loader frames are designed for specific tractor models. Do not install a loader frame on a different model than specified, without obtaining approval from CNH America LLC.*

Operator's age

All persons who will be operating this machine shall possess a valid local vehicle operating permit and/or other applicable local age work permits.

WARNING

IMPROPER OPERATION OF THIS MACHINE CAN CAUSE DEATH OR SERIOUS INJURY.

MAKE SURE THAT EVERY OPERATOR:

-is instructed in the safe and proper use of this machine.

-reads and understands the operator's manual for this machine.

-reads and understands ALL safety signs on the machine.

Failure to comply could result in death or serious injury.

W0188A

Read and thoroughly understand this manual before operating this machine. If you are an inexperienced operator, study this manual and receive operating instructions from an experienced operator. Your dealer can assist you in learning machine operation and show you proper operating procedures. Keep this manual readily available, preferably with the machine. If the original manual is damaged, order a new one from your dealer.

International symbols

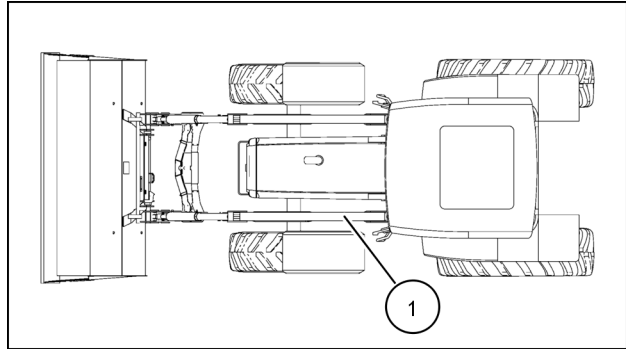
As a guide to the operation of the machine, various universal symbols have been utilized on the instruments, controls, switches, and fuse box. The symbols are shown below with an indication of their meaning.

	Thermostart starting aid		Radio		PTO		Position Control
	Alternator charge	KAM	Keep alive memory	N	Transmission in neutral		Draft Control
	Fuel level		Turn signals		Creeper gears		Accessory socket
	Automatic Fuel shut-off		Turn signals -one trailer		Slow or low setting		Implement socket
	Engine speed (rev/min x 100)		Turn signals -two trailers		Fast or high setting		%age slip
	Hours recorded		Front wind-screen wash/wipe		Ground speed		Hitch raise (rear)
	Engine oil pressure		Rear wind-screen wash/wipe		Differential lock		Hitch lower (rear)
	Engine coolant temperature		Heater temperature control		Rear axle oil temperature		Hitch height limit (rear)
	Coolant level		Heater fan		Transmission oil pressure		Hitch height limit (front)
	Tractor lights		Air conditioner		FWD engaged		Hitch disabled
	Headlamp main beam		Air filter blocked		FWD dis-engaged		Hydraulic and transmission filters
	Headlamp dipped beam		Parking brake		Warning!		Remote valve extend
	Work lamps		Brake fluid level		Hazard warning lights		Remote valve retract
	Stop lamps		Trailer brake		Variable control		Remote valve float
	Horn		Roof beacon		Pressurised! Open carefully		Malfunction! See Operator's Manual
			Warning ! Corrosive substance				Malfunction! (alternative symbol)

Product Identification

Product identification plate

A product identification plate (1) is located on the inside of the left-hand loader arm.



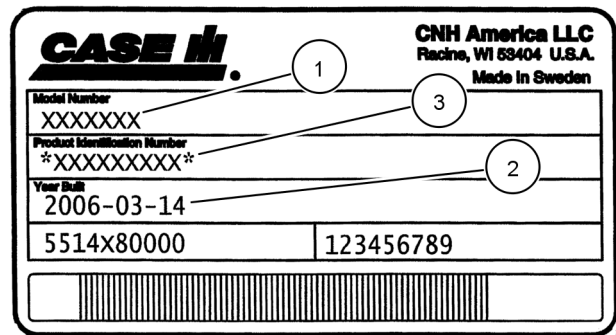
20105780 1

The identification numbers on this plate are important in the event that your loader should require future service.

The plate specifies:

Model, Product Identification Number and Production Date.

The loader model, product identification number (PIN) and production date, must always be quoted during service questions or when spare parts are needed.



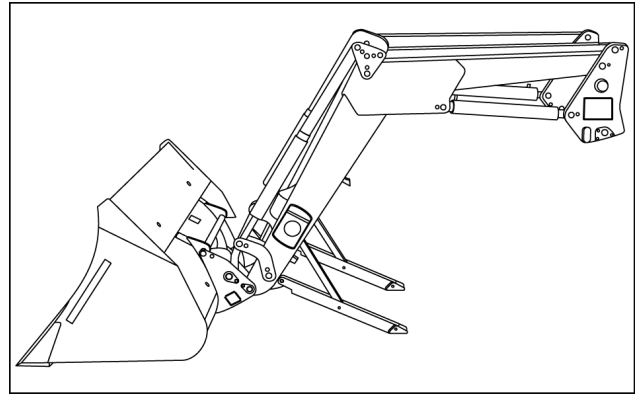
CIH SN PLATE 2

Machine orientation

Alignment reference

In this manual, references to right-hand and left-hand are consistently as seen from the operator's seat when facing forwards.

NOTE: Some illustrations in this manual may show a different model of tractor or loader, compared with your loader. The same information applies to your equipment unless otherwise specified.



93105807 1

Left-hand view

Definition

Description

3rd function

- Optional hydraulic function for operating the attachment hydraulics.

Bucket level indicator

- Device that indicates the angular position of the implement during lifting and lowering movements.

Control valve

- Valve designed for controlling the operation of the loader.

Central control valve

- Central distribution valve, mounted on the loader cross tube which has the capability to accommodate hydraulic options.

“Quick Connect” (Multi Coupler Fast Snap Style)

- Multi port hydraulic connection for coupling and uncoupling the loader’s hydraulics.

Hose kit

- Hoses and hydraulic components for connecting the loader to the tractor's original remote valve.

Soft-ride loader suspension

- Load damper, improves driver comfort and reduces stress on the tractor and loader when driving on rough surface

SSL “Quick Attach”

- Attachments and loader attaching plate that is compatible with approved skid steer loader attachments.

EURO “Quick Attach”

- Attachments with hooks and loader tool carrier connection system. Designed for international standard ISO23206.

2 - SAFETY INFORMATION

Safety rules and signal word definitions


Personal safety





This is the safety alert symbol. It is used to alert you to potential personal injury hazards. Obey all safety messages that follow this symbol to avoid possible death or injury.

Throughout this manual and on machine decals, you will find the signal words DANGER, WARNING, and CAUTION followed by special instructions. These precautions are intended for the personal safety of you and those working with you.

Read and understand all the safety messages in this manual before you operate or service the machine.

 DANGER indicates a hazardous situation which, if not avoided, will result in death or serious injury. The color associated with DANGER is RED.

 WARNING indicates a hazardous situation which, if not avoided, could result in death or serious injury. The color associated with WARNING is ORANGE.

 CAUTION, used with the safety alert symbol, indicates a hazardous situation which, if not avoided, could result in minor or moderate injury. The color associated with CAUTION is YELLOW.

FAILURE TO FOLLOW DANGER, WARNING, AND CAUTION MESSAGES COULD RESULT IN DEATH OR SERIOUS INJURY.

Machine safety

NOTICE: Notice indicates a situation which, if not avoided, could result in machine or property damage. The color associated with Notice is BLUE.

Throughout this manual you will find the signal word Notice followed by special instructions to prevent machine or property damage. The word Notice is used to address practices not related to personal safety.

Information

NOTE: Note indicates additional information which clarifies steps, procedures, or other information in this manual.

Throughout this manual you will find the word Note followed by additional information about a step, procedure, or other information in the manual. The word Note is not intended to address personal safety or property damage.

Safety rules - Personal safety

Carefully study these precautions, and those included in the external attachment operators manual, and insist that they be followed by those working with and for you.

1. Thoroughly read and understand this manual and the attachment Operator's Manual before operating this or any other equipment.
2. Be sure all people and pets are clear of the machine before starting. Sound the horn, if equipped, three times before starting engine.
3. Only the operator should be on the machine when in operation. Never allow anyone to climb on to the machine while it is in motion. If the machine is equipped with an Instructors Seat, this must only be used for training purposes. Passengers must not be allowed to use the Instructors Seat.
4. Keep all shields in place. Never work around the machine or any of the attachments while wearing loose clothing that might catch on moving parts.
5. Observe the following precautions whenever lubricating the machine or making adjustments.
 - Disengage all clutching levers or switches.
 - Lower the attachment, if equipped, to the ground or raise the attachment completely and engage the cylinder safety locks. Completing these actions will prevent the attachment from lowering unexpectedly.
 - Engage the parking brake.
 - Shut off the engine and remove the key.
 - Wait for all machine movement to stop before leaving the operators platform.
6. Always keep the machine in gear while travelling downhill.
7. The machine should always be equipped with sufficient front or rear axle weight for safe operation.
8. Under some field conditions, more weight may be required at the front or rear axle for adequate stability. This is especially important when operating in hilly conditions or/when using heavy attachments.
9. Always lower the attachment, shut off the engine, set the parking brake, engage the transmission gears, remove the key and wait for all machine movement to stop before leaving the operators platform.
10. If the attachment or machine should become obstructed or plugged; set the parking brake, shut off the engine and remove the key, engage the transmission gears, wait for all machine or attachment motion to come to a stop, before leaving the operators platform to removing the obstruction or plug.
11. Never disconnect or make any adjustments to the hydraulic system unless the machine and/or the attachment is lowered to the ground or the safety lock(s) is in the engaged position.
12. Use of the flashing lights is highly recommended when operating on a public road.
13. When transporting on a road or highway, use accessory lights and devices for adequate warning to the operators of other vehicles. In this regard, check local government regulations. Various safety lights and devices are available from your CASE IH AGRICULTURE dealer.
14. Practice safety 365 days a year.
15. Keep all your equipment in safe operating condition.
16. Keep all guards and safety devices in place.
17. Always set the parking brake, shut off the engine and remove the key, engage the transmission gears, wait for all machine or attachment motion to come to a stop, before leaving the operators platform to service the machine and attachment.
18. Remember: A careful operator is the best insurance against an accident.
19. Extreme care should be taken in keeping hands and clothing away from moving parts.

Personal safety



A careful operator is the best operator. Most accidents can be avoided by observing certain precautions. To help prevent accidents, read the following precautions before operating this equipment. Equipment should be operated only by those who are responsible and instructed to do so.

Carefully review the procedures given in this manual with all operators. It is important that all operators be familiar with and follow safety precautions.

General

1. Read the Operator's Manual carefully before using the tractor or loader. Lack of operating knowledge can lead to accidents.
2. Replace damaged or illegible safety decals. See the Specifications section of this manual for required decals.
3. Operate the tractor and loader only from the operator's seat.

The tractor

1. Use an approved roll bar and seat belt for safe operation. Overturning a tractor without a roll bar can result in death or injury. If your tractor is not equipped with a roll bar and seat belt, see your tractor dealer.
2. Equip your tractor with FOPS (Falling Object Protective Structure) and seat belts before installing or operating the loader.
3. Use the loader only on a tractor with the ROPS installed. Whenever possible, operate the tractor and loader with the ROPS in the upright and locked position and the seat belt fastened and correctly adjusted. When operating in restricted overhead environment with the ROPS folded down, do not wear the seat belt. Always return the ROPS to the upright and locked position as soon as operating conditions permit.
4. Add the recommended wheel ballast and/or rear weight as recommended in the operator's manual to provide good stability.
5. Move the wheels to the tractor manufacturer's widest recommended settings to increase stability.
6. Move and turn the tractor at low speeds.

The loader

1. Improper use of a loader can cause serious injury or death.
2. Do not lift or carry anybody on the loader or in the bucket or attachment.
3. Never allow anyone to get under the loader bucket or reach through the lift arms when the bucket is raised.
4. Do not walk or work under a raised loader, bucket, or attachment unless it is securely blocked or held in position.
5. Avoid overhead wires and obstacles when the loader is raised. Contacting electrical lines can cause electrocution.
6. Make sure all dismantled loaders are on a hard, level surface.
7. Do not repair, remove, or replace any parts of the loader while it is in the dismantled position.

Operating the loader

1. It is the loader owner's responsibility to be certain that anyone operating the loader reads this manual first to be aware of the safe way of operating the loader.
2. Exercise caution when operating the loader with a raised, loaded bucket or fork.
3. Avoid loose fill, rocks, and holes. They can be dangerous for loader operation or movement.
4. Use care to maintain proper stability when operating on steep grades. Always carry the bucket in the lowest position possible.
5. Allow for the loader length when making turns.
6. Stop the loader arms gradually when lowering or lifting.
7. Use caution when handling loose or shiftable loads.

8. Carry the bucket at a low position during transport for better visibility.
9. When parking or servicing, lower the bucket to the ground, stop the engine, and set the parking brakes before leaving the tractor seat.
10. Operate the loader controls only when properly seated at the controls.
11. Using front end loaders without special attachments for handling large heavy objects such as large round or rectangular bales, logs, and oil drums is NOT RECOMMENDED.
12. Handling large heavy objects can be extremely dangerous due to:
 - danger of rolling the tractor over.
 - danger of upending the tractor.
 - danger of the object rolling or sliding down the loader arms onto the operator.
13. If you must perform this sort of work (see #12 above), protect yourself by:
 - using the proper attachment.
 - never lifting the load higher than necessary to clear the ground when moving.
 - ballasting the tractor rear to compensate for the load.
 - never lifting large objects with equipment that does not have an anti-rollback device.
 - moving slowly and carefully, avoiding rough terrain.
14. Loader lift capacity and break-away capacity diminish as the loader height is increased. Use care not to grasp more material than the loader is designed to handle.

Maintenance

1. When servicing or replacing the pins in the cylinder ends, bucket, etc., always use a drift and hammer. Failure to do so could result in injury from flying metal fragments.
2. Do not modify or alter, or permit anyone else to modify or alter, the loader or any of its components or any loader function without first consulting a CASE IH AGRICULTURE dealer. If you have any questions regarding loader modifications, contact your dealer.
3. Always wear safety goggles when servicing or repairing the machine.
4. Escaping hydraulic/diesel fluid under pressure can penetrate the skin, causing serious injury.
 - DO NOT use your hand to check for leaks.
 - Use a piece of cardboard or paper to search for leaks.
 - Stop the engine and relieve the pressure before connecting or disconnecting the hydraulic or diesel lines.
 - Tighten all connections before starting the engine or pressuring the lines.
 - If any fluid is injected into the skin, obtain medical attention IMMEDIATELY or gangrene may result.
5. Do not tamper with the relief valve setting. The relief valve is preset at the factory. Changing the setting can cause overloading the loader and tractor, and serious operator injury may result.

Thank you so much for reading.
Please click the “Buy Now!”
button below to download the
complete manual.



After you pay.

You can download the most
perfect and complete manual in
the world immediately.

Our support email:

ebooklibonline@outlook.com