

OPERATOR'S MANUAL

3510

4010

4510

4710

Tractor

Part Number 84591230

1st edition English
September 2015



Contents

1 GENERAL INFORMATION

Note to the Owner	1-1
General information and safety	1-2
Product identification	1-4
Ecology and the Environment	1-6

2 SAFETY INFORMATION

Safety rules	2-1
Personal safety	2-1
Driving the tractor	2-2
Operating the tractor	2-3
Operating the Power Take-Off (PTO)	2-5
Servicing the tractor	2-6
Diesel fuel	2-7
Trailer hitching	2-8
Instructions for Driving on Road	2-10
General and Safety Decals	2-13
International symbols	2-18
Fuel saving tips for optimum performance	2-20

3 CONTROLS AND INSTRUMENTS

Access to operator's platform

Before Operating	3-1
------------------------	-----

Operator's seat

Operator seat - Adjust	3-2
------------------------------	-----

Forward controls

Instrument cluster - Control identification	3-3
Hand controls and switches	3-5

Left-hand side controls

Clutch Pedal	3-6
PTO Lever	3-7
Four-Wheel Drive(4WD) lever	3-7

Right-hand side controls

Parking Brake	3-8
Brake Pedal	3-8
Foot Accelerator	3-9
Differential lock pedal	3-9

Transmission

Transmission - Control identification	3-10
---	------

4 OPERATING INSTRUCTIONS

Commissioning the unit

Before Operating	4-1
Running-In Procedure	4-1

Starting the unit

Starting the tractor with jumper cables	4-2
Starting the engine	4-3

Stopping the unit

Stopping the engine	4-5
---------------------------	-----

5 TRANSPORT OPERATIONS

Road transport

Carrying the tractor on a transporter	5-1
---	-----

Recovery transport

Towing the tractor	5-2
--------------------------	-----

6 WORKING OPERATIONS

Power Take-Off (PTO)

Power Take-Off (PTO) - Overview	6-1
Power take-off speeds	6-1
Power Take-Off (PTO) operation	6-3
Towing attachments	6-4

THREE-POINT LINKAGE

Three-point linkage	6-5
Attaching 3-point implements	6-6
Lift rods, lower links and top link	6-7

Hydraulic systems

Hydraulic systems - Check	6-10
Position control operation	6-12
Draft Control Operation	6-13
Combined position and Draft control	6-13
Float Operation	6-14
Lift-O-Matic Button	6-14
Sensitivity Control	6-15
Response Control or Drop rate Control	6-15
Diverter valve	6-16

WHEEL TRACK ADJUSTMENT

Front wheel track adjustment	6-17
Hydrostatic Steering	6-19
Mechanical Steering	6-19
front wheels toe-in adjustment	6-20
Rear wheel track adjustment	6-21

BALLASTING AND TIRES

Ballasting of Tires – Selecting ballast	6-22
Rear wheel weights	6-24
Front Weights	6-24
Liquid Ballast	6-25
Tire inflation	6-25
Front Tire Pressure and Permissible Loads	6-27
Rear wheel - Tire pressure	6-27

7 MAINTENANCE

General information

Introduction	7-1
Safety precautions	7-1
During the first 50 hour operation	7-1
The First 50 Hours Service	7-1
Preventing System Contamination	7-2

Flexibility of Maintenance Intervals	7-2
Maintenance chart	7-2
Fuelling The Tractor	7-3
Fuel Requirements	7-3
Diesel fuel quality specifications	7-3
Fuel storage	7-4
Filling the fuel tank	7-5
Guards	7-6

Maintenance planning

Maintenance chart	7-7
-------------------------	-----

Every 10 Hours of Operation or Daily (Whichever Occurs First)

Check engine oil level	7-10
Engine cooling system - Check	7-10
Air pre-cleaner - Cleaning	7-11
Air Cleaner Oil Bowl- Clean	7-11
Hydrostatic steering oil level	7-12
Drain water from Fuel Filter	7-12
Water Separator	7-13

EVERY 50 HOURS

Change the fuel filter	7-13
Clutch pedal free play - check	7-14
Brake pedal free play - check	7-14
Wheel nut and bolt torque	7-15
Tire pressure and condition	7-15
Fan / alternator belt tension adjust	7-15
Maintenance - Grease	7-16
Battery electrolyte level - Check	7-19
Fuel Injection Pump Oil level-Check	7-19
Hydraulic oil filter	7-20
Front axle housing oil level - 4WD	7-20

EVERY 300 HOURS

Fuel filters - Replace	7-21
Fuel Feed Pump Strainer- Clean	7-22
Fuel Injection Pump Oil-Change	7-22
Change engine oil	7-23
Engine oil filter - Replace	7-23
Transmission/hydraulics oil level	7-24

PTO clutch lever free play	7-24
Front axle reduction hubs - 4WD	7-25
4WD front axle swivel bearings	7-25
Drive shaft sleeve for 4WD front axle connection	7-26

EVERY 600 HOURS

Fuel filters - Replace	7-27
Transmission Oil Breather	7-28
Clean, Re-grease and Adjust Front Wheel Bearing	7-29
Fuel injectors - servicing	7-29
Toe-in adjustment	7-30

EVERY 1200 HOURS

Transmission/Hydraulic oil - change fluid	7-30
Radiator - Drain fluid	7-31
Steering - Change fluid	7-32
Check the valve tappet clearance	7-32
Front axle housing oil level - 4WD	7-33
Draining the oil from the front axle final drive hub - 4WD	7-33

GENERAL MAINTENANCE

Fuel injection system - Bleed	7-34
Engine idle speed - adjust	7-34
Headlight - Adjust	7-35
Work light - Check	7-35
Bulb replacement	7-36
Fuse replacement	7-36
Battery charge - Check	7-37

Vehicle Storage

Tractor storage	7-41
---------------------------	------

8 TROUBLESHOOTING

Fault code resolution

Maintenance - Troubleshooting	8-1
---	-----

9 SPECIFICATIONS

Dimensions	9-1
----------------------	-----



Engine	9-4
Cooling System	9-5
Clutch - Technical Data	9-5
Power Take-Off (PTO) - Technical Data	9-5
Three-point linkage	9-5
Hydraulic System	9-5
Electrical systems - Technical Data.	9-6
Steering - Capacity	9-7
Brakes	9-7
Lubrication and maintenance	9-8



1 - GENERAL INFORMATION

Note to the Owner

Introduction

Congratulations on your purchase of a NEW HOLLAND 3510 / 4010 / 4510 / 4710 tractor. You are now a proud owner of the World's premium brand tractor and one that is also a firm favorite of the Indian Farmer.

The 3230 / 3037 / 3030 NX series, 3032, 3630TX Super / 3600-2TX, 3630TX Turbo Super / 5500 Turbo Super / 6500 Turbo Super / 7500 Turbo Super, and 6010/ 6510/ 7510 Excel Series tractors are manufactured by NEW HOLLAND, the world's leading manufacturer of agricultural tractors, combine harvesters, and other agricultural equipment. NEW HOLLAND operates in more than 160 countries and nearly 4 crore machines are at work worldwide. Our global network is made up of nearly 12,000 dealers extending product support, customer service and spare parts back-up to our customers.

The Company's mission is "to be a customer-driven organization". Together with our dealer network we will provide you the best in customer support to ensure trouble free performance and enable you to maximise tractor productivity. Each dealer is trained by New Holland and is equipped to give you the best possible service support.

The following pages of the operator's manual will provide you detailed information on operating the tractor, safety and regular maintenance. Your dealer will personally install your new tractor, explain the Company's warranty policy and give full details of your tractor care. However, in case you have any further specific product or service related requirement, kindly contact as under.

Service department

New Holland Fiat (India) Pvt. Ltd.

Industrial Plot No. 3,
Udyog Kendra, Greater Noida,
Distt. : Gautam Budh Nagar (UTTAR PRADESH) - 201 306
Customer Care Toll Free No. : 1800-419-0124 (Timings 10.00 a.m to 6.00 p.m)
Website : www.newhollandindia.co.in
CIN : U29220MH1992PTC069675
We look forward to a long beneficial relationship.

General information and safety

To the owner

General

This Manual has been prepared to assist you in the correct procedure for running in, driving and operating and for the maintenance of your new tractor. Your tractor, which is designed to power and propel itself, is intended for use in normal and customary agricultural applications.

Read this manual carefully and keep it in a convenient place for future references. If at any time you require advice concerning your tractor, do not hesitate to contact your authorised dealer. He has company trained personnel, genuine manufacturers' parts and the necessary equipment to carry out all your service requirements.

Your tractor has been designed and built to give maximum performance, economy and ease of operation under a wide variety of operating conditions. Prior to delivery, the tractor was carefully inspected, both at the factory and by your dealer to ensure that it reaches you in optimum condition. To maintain this condition and trouble-free operation, it is important that the routine services, as specified in "Maintenance" Section of this manual, are carried out at the recommended intervals.

Cleaning the tractor

While cleaning the tractor, particularly when using a high pressure tractor washing equipment, precaution has to be taken to safeguard electrical or electronic components and connections. Pressure generated by some of these machines is such that complete protection against water ingress cannot be guaranteed. While

washing the tractor, using a high pressure washing machine, do not stand too close to the tractor and avoid directing the jet at electrical connections, breathers, seals, filler caps, etc. Never direct a cold water jet at a hot engine or exhaust.

Safety

See **2-1** to ensure your safety and the safety of others. Read the safety precautions and follow the advice offered before operating the tractor.

First 50 hour service

After you have operated the tractor for **50 h**, take your tractor, together with warranty booklet to your dealer. He will then perform the manufacturer recommended **50 h** service and complete the service report.

NOTE: *Make sure the completion of the coupon and signature of service manager or dealer.*

Service parts

It should be pointed out that genuine parts have been examined and approved by the company. The installation and/or usage of 'non-genuine' products could have negative effects upon the design characteristics of your tractor and thereby affect its safety. The company is not liable for any damage caused by the use of 'non genuine' parts and accessories. Only genuine NEW HOLLAND replacement parts should be used. Use of non-genuine parts may invalidate legal approvals associated with this product. It is prohibited to carry out any modifications to the tractor unless specifically authorised, in writing, by the After Sales Service department of the Company.

Warranty

Your tractor is warranted according to the current legislation in our country and with contractual agreements reached with the dealer at the time of sale. However, the warranty is no longer valid if the rules and instructions for the use and maintenance of the tractor described in this manual are

not observed. For more details on warranty, please refer warranty booklet supplied along with this manual.

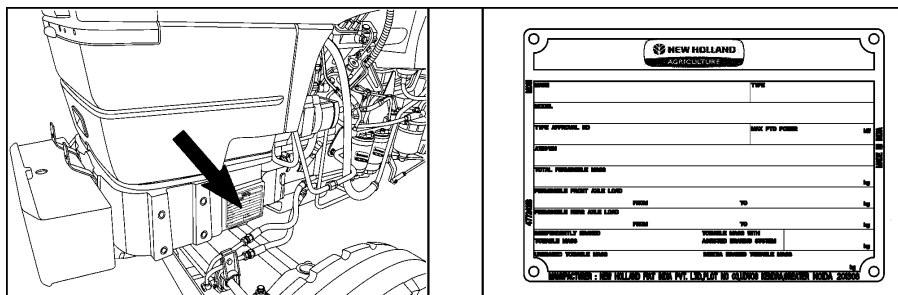
NOTE: *Reference positions (Left / Right / Front / Rear) of components and decals indicated in this operator's manual taken with a view when operator is seated on Operator Seat.*

Product identification

Vehicle Identification Plate (VIP)

Location – On the left-hand side of the front axle support

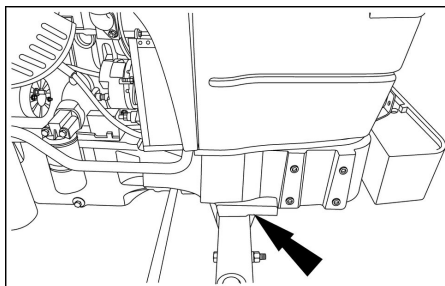
The first line represents tractor serial chassis number and model, while the second line represents unit code and engine serial number followed by transmission number and product code.



GNIL15TR00148FA 1

Vehicle Identification Number (VIN)

The tractor serial number, unit code and engine number are stamped on the right hand side of the front axle support. These numbers are also repeated on the VIP reproduced above.

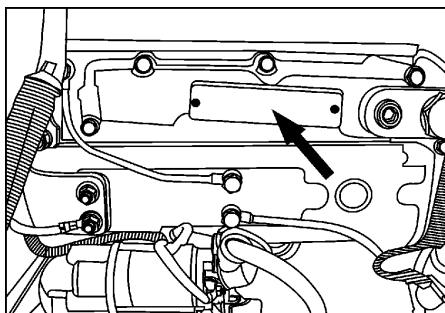


GNIL15TR00147AA 2

Engine identification

The engine serial number stamped on right side of the engine cylinder block. Record the engine serial number below for quick reference.

Engine serial no.— _____

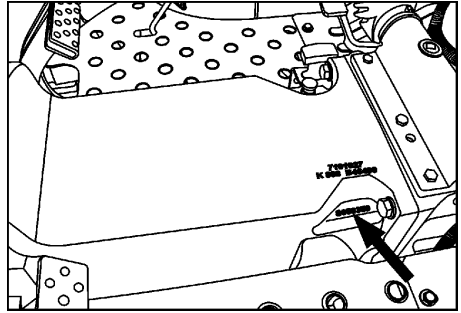


GNIL13TR00003AA 3

Transmission identification

The serial no. is stamped on right side of transmission housing below driver seat. This information is repeated on the VIP. Record the transmission serial number below for quick reference.

Transmission serial no.— _____



GNIL13TR00004AA 4

Ecology and the Environment

Soil, air and water are vital factors that impact agriculture and life in general. Where legislation does not yet rule the treatment of some of the substances which are required by advanced technology, common sense should govern the use and disposal of products of a chemical and petrochemical nature.

The following are recommendations which may be of assistance:

- Become acquainted with and ensure that you understand the legislation applicable to your country.
- Where no legislation exists, obtain information from suppliers of oils, filters, batteries, fuels, cleaning agents, etc., with regard to their effect on man and nature and how to safely store, use and dispose off these substances.

Helpful hints

1. Avoid filling tanks using open containers or inappropriate pressurized fuel delivery systems which may cause excessive spillage
2. Avoid filling tanks using open containers or inappropriate pressurized fuel delivery systems which may cause excessive spillage them contain substances which can be harmful to your health.
3. Modern oils contain additives. Do not burn contaminated fuels and/or waste oils in ordinary heating systems.
4. Avoid spillage while draining used engine coolant mixtures, engine, gearbox and hydraulic oils, brake fluids, etc. Do not mix drained brake fluids or fuels with lubricants. Store them safely until they can be disposed off in a proper way to comply with local legislation.
5. Modern coolant mixtures, i.e. antifreeze and other additives, should be replaced every 12 months or 1200 Hours. They should not be allowed to get into the soil but should be collected and disposed off safely.
6. Repair any leaks or defects in the engine cooling or hydraulic system immediately.
7. Repair any leaks or defects in the engine cooling or hydraulic system immediately.
8. Protect hoses during welding as penetration of weld splatter may burn a hole or weaken them, causing the losses of oil, coolant etc.

Thank you so much for reading.
Please click the “Buy Now!”
button below to download the
complete manual.



After you pay.

You can download the most
perfect and complete manual in
the world immediately.

Our support email:

ebooklibonline@outlook.com