

NEW HOLLAND

TS90

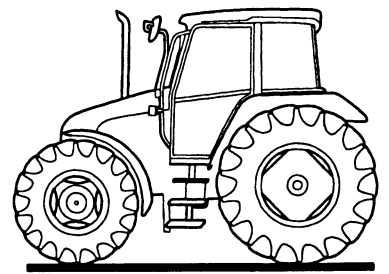
TS100

TS110

**Synchro Command
and ElectroShift
Transmissions**

86562959 1/98

OPERATOR'S MANUAL



NEW HOLLAND

Reprint

TO THE OWNER:

The warranty coverage that is extended to your tractor is explained in the Warranty and Limitation of Liability form. Your dealer will provide you with a copy of the warranty and retain a copy which you have signed. After you read the warranty, ask your dealer to explain any points that you may not understand.

This tractor was designed to power and propel itself. It is intended for use in normal and customary agricultural and light duty commercial applications.

Do not modify or alter or permit anyone else to modify or alter this tractor or any of its components or any tractor function without first consulting an authorized New Holland dealer. If you have any questions regarding tractor modifications, contact New Holland North America, Inc., 500 Diller Ave., New Holland, PA 17557.

A safety cab incorporating a Roll Over Protection Structure (ROPS) and a seat belt are standard equipment for the tractor. A safety cab/ROPS is effective in reducing injuries during tractor overturn accidents. Overturning a tractor without a ROPS can result in serious injury or death. If your tractor is not equipped with a seat belt, see your New Holland dealer.

Your safety and the safety of those around you depends upon the care and good judgment you use while operating this equipment. Read the safety precautions carefully.

For a complete list of the delivery service checks performed by your dealer, refer to DELIVERY REPORT in this manual. The first copy is your record of the service performed and the second copy, which is to be removed from the manual, is your dealer's record. **MAKE SURE THAT YOU AND THE DEALER SIGN BOTH COPIES.**

After you have operated the tractor for 50 hours, take your tractor and this manual to your selling dealer. He will perform the factory recommended 50-hour service. You will be responsible for the cost of lubricants, fluids, filters and other items replaced as part of normal maintenance. Prior to taking the tractor to your selling dealer for service, it is recommended that you contact them to determine any other charges for which you may be responsible.

All data given in this book is subject to production variations. Dimensions and weights are approximate only and the illustrations do not necessarily show tractors in standard condition. For exact information about any particular tractor please consult your New Holland dealer.



CAUTION: THIS SYMBOL IS USED THROUGHOUT THIS BOOK WHENEVER PERSONAL SAFETY IS INVOLVED. TAKE TIME TO READ AND FOLLOW THE INSTRUCTIONS. BE CAREFUL!

CAUTION: PICTURES IN THIS MANUAL MAY SHOW PROTECTIVE SHIELDING OPEN OR REMOVED TO BETTER ILLUSTRATE A PARTICULAR FEATURE OR ADJUSTMENT.

BE CERTAIN, HOWEVER, TO CLOSE OR REPLACE ALL SHIELDING BEFORE OPERATING THE MACHINE.

IMPROVEMENTS

New Holland North America, Inc. is continually striving to improve its products. We reserve the right to make improvements or changes when it becomes practical and possible to do so, without incurring any obligation to make changes or additions to the equipment sold previously.



NEWHOLLAND WARRANTY AND LIMITATION OF LIABILITY - AGRICULTURAL PRODUCTS

COVERAGE PROVIDED

New Holland North America, Inc. or New Holland Canada, Ltd., hereinafter called "Company" warrants to the retail purchaser of each new Product (as listed below) that the Selling Dealer will repair or replace any part thereof found to be defective in materials or workmanship within the following periods. This warranty is for the benefit of the original or subsequent purchaser when purchased from an authorized New Holland dealer.

BASIC WARRANTY

Table with 2 columns: Product and Warranty Period (whichever comes first). Rows include Harvesting, Materials Handling Equipment and Implements, Compact Tractors, and Articulated 4 Wheel Drive Models.

**The components covered by extended warranty consists of the following:

ENGINE - The rocker arm cover, crankshaft seals, cylinder head, engine block, crankcase pan and timing gear cover of the engine, and the parts fully enclosed within these units.

TRANSMISSION AND REAR AXLE (Tractors and SP Windrowers) - The clutch housing (excludes clutch), transmission case, dual power housing, differential housing, differential pinion, PTO seals, final drive housings, transfer case, front wheel drive housing, and parts fully enclosed within these housings, including the drive axles.

LIMITATIONS, INCLUDING DISCLAIMER OF IMPLIED WARRANTIES AND CONSEQUENTIAL DAMAGES

This warranty gives you specific legal rights and you may also have other rights which vary, depending on state or provincial laws.

New Holland North America, Inc. or New Holland Canada, Ltd. does not authorize any person or dealer to create for it any other obligation or liability in connection with these products. TO THE EXTENT ALLOWED BY LAW, ANY IMPLIED WARRANTY OF MERCHANTABILITY OR FITNESS APPLICABLE TO THIS PRODUCT IS LIMITED TO THE STATED DURATION OF THIS WRITTEN WARRANTY.

Some states and provinces do not allow limitations on how long an implied warranty will last or the exclusion or limitation of incidental or consequential damages, so the above limitations or exclusions may not apply to you.

The remedy of repair or replacement of a defective part during the warranty period herein specified shall be the purchaser's exclusive remedy.

EXTENDED SERVICE PLAN (ESP)

When offered by the Company, the option to purchase an Extended Service Plan has been explained and:

- I accept and have signed the completed registration form
I decline the Extended Service Plan
I will consider within 180 days (12 months on 8070 series)

PROTECTIVE EQUIPMENT

Rollover protective structure (ROPS) and seat belts are provided as standard equipment on all New Holland agricultural tractors and we strongly recommend their use. Customers who elect to remove or not use this protection do so at their own risk.

- I acknowledge the existence of OSHA regulations pertaining to ROPS.
A PTO master shield, if applicable, has been installed on the machine.
The correct Operator's Manual has been furnished.
Safety precautions were explained to me by the Selling Dealer.

ACKNOWLEDGEMENT/WARRANTY TRANSFER

The blank spaces under "Protective Equipment" have been filled in and are correct, and I acknowledge that I have read and I accept this Warranty and Limitation of Liability.

Form fields for Purchaser and Dealer information including Address, City, State, Zip, Model, Serial No., Retail Date, Attachment Model, SN, and Signature/Date lines.

New Holland Warranty Detail

The warranty period will begin on date of original retail sale or date of original use, whichever is earlier.

- The obligation of Company to the purchaser under this warranty is limited to the repair or replacement of defective parts by an authorized New Holland dealer and will be done free of charge for both parts and labor using genuine New Holland replacement parts. Repair or replacement in accordance with this warranty shall constitute fulfillment of all liabilities of Company and the Selling Dealer in respect to such Products.
- Repairs or replacements will be performed by the Selling Dealer, following delivery of the Product by the purchaser to the Dealer's place of business. When the purchaser has moved a long distance from the Selling Dealer, or the Selling Dealer is no longer in business, any New Holland dealer authorized to sell and service the described Products may perform the repair at its dealership.
- The Selling Dealer shall review these warranty provisions with the purchaser prior to retail sale, secure his acknowledgement of delivery of this warranty and record the date of original retail sale or date of original use.
- To obtain warranty service, the purchaser must (1) report the product defect to an authorized New Holland dealer and request repair within the applicable warranty term and (2) present evidence of the warranty start date.

WHAT IS NOT COVERED BY THE WARRANTY?

This warranty shall NOT apply under the following conditions:

- (i) With respect to vendor warranty items such as Allison transmissions and Deutz, Cummins and Caterpillar engines, or tires, tubes, and attachments which shall be warranted by their manufacturer, or local representative thereof.
- (ii) If the unit has been subject to misapplication, abuse, misuse, negligence of proper maintenance or other negligence, fire or other accident.
- (iii) If parts or attachments other than those made or marketed by New Holland North America, Inc. or New Holland Canada, Ltd., have been used in connection with the unit, and in the sole judgment of Company such use affects its performance, stability or reliability.
- (iv) If the unit has been altered or repaired outside of a New Holland dealership in a manner which, in the sole judgment of Company, affects its performance, stability or reliability.
- (v) Batteries are covered by a separate pro rata adjustment warranty. The pro-rata plan covers the battery fully for the basic product warranty period as indicated, with any remaining warranty pro-rated according to the months of service.
- (vi) The purchaser shall be responsible for payment of dealer travel time to the machine or to deliver the machine to the dealer's service shop for repair. New Holland warranty does not cover delivery charges or travel time.
- (vii) The Company shall have no liability for used equipment sold beyond the specified coverage period.
- (viii) No warranty shall apply to damage resulting from accident or damage caused by environment (such as exposure to corrosive material). The Company shall not be responsible for rental equipment used to replace the equipment being repaired.
- (ix) This warranty shall NOT apply to normal maintenance services (such as tune-ups, fuel injection system cleaning or wheel, brake and clutch adjustments), to normal replacement of service items (such as filters and brake or clutch linings), or to normal deterioration due to use or exposure (such as belts and exterior finish). New Holland shall not be responsible for normal replacement parts such as cutting knives, chains, belts, clutches, filters, oil, or other parts which are worn out, unless they are determined to be defective in material or workmanship.
- (x) This warranty shall NOT apply to any New Holland Product which is retailed or distributed by anyone other than New Holland North America, Inc. or New Holland Canada, Ltd., through its authorized dealers. This warranty shall NOT apply to any Product which is normally operated outside of the United States, and/or Canada.
- (xi) This warranty shall NOT apply if the purchaser, insurance company, or any other entity or individual acting on behalf of the purchaser seeks reimbursement for the dollar value of the repair(s) or replacement(s) covered under this warranty.
- (xii) If the injection pump has been set for fuel delivery above New Holland specifications.

RIGHT TO MAKE DESIGN CHANGES

Company reserves the right to make changes in the design and other changes in its products at any time and from time to time without notice and without incurring any obligation with respect to any product previously ordered from it, sold or shipped by it.

FEDERAL EMISSIONS WARRANTY

(California owner's emissions warranty is covered elsewhere)

New Holland warrants that your new 1997 and later heavy-duty off-road diesel engine was designed, built, and equipped to conform to applicable U.S. Environmental Protection Agency regulations for a period of use of five years or 3,000 hours of operation, whichever occurs first.

The new model year, class of diesel engine, and emission application determination for your engine are identified on the emission control information label affixed to the top of your engine's rocker arm cover. The warranty period begins on the date the new equipment is sold to the first retail purchaser.

Any emission control system parts which are proven defective during normal use will be repaired or replaced during the warranty period. The warranty repairs and service will be performed by any authorized New Holland dealer at the dealer's place of business, with no charge for parts or labor (including diagnosis).

As the engine owner, you are responsible to perform all the required maintenance listed in your owner's manual. New Holland will not deny an emission warranty claim solely because you have no record of maintenance; however, a claim may be denied if your failure to perform maintenance resulted in the failure of a warranted part. Receipts covering regular maintenance should be retained in the event of questions and these receipts should be passed on to each subsequent owner of the engine.

It is recommended replacement parts used for maintenance or repairs be New Holland Service Parts to maintain the quality originally designed into your emission certified engine. The use of non-New Holland parts does not invalidate the warranty on other components unless the use of such parts causes damage to warranted parts.

New Holland wishes to assure the emission control systems warranty is being properly administered. If you believe you have not received the service entitled to under this warranty, you should contact the nearest New Holland Branch Office for assistance. The address and phone number of each Branch Office is in your vehicle owner's manual. If additional assistance or information is needed, contact:

Service Department
New Holland North America, Inc.
500 Diller Avenue
New Holland, PA 17557
(717) 355-1121

Please note that the Emission Warranty does not cover:

1. Systems and parts that were not first installed on the new equipment or engine as original equipment by New Holland.
2. Part malfunctions caused by abuse, misuse, improper adjustment, modification, alteration, tampering, disconnection, improper or inadequate maintenance, or use of non-recommended fuels and lubricating oils.
3. Accident caused damage, acts of nature, or other events beyond New Holland's control.
4. Replacement of expendable items made in connection with scheduled maintenance.
5. Parts requiring replacement, inspection or adjustment maintenance intervals for reasons other than being defective.
6. Parts which are not New Holland Service Parts.
7. Loss of time, inconvenience, loss of use of equipment/engine or commercial loss.
8. Equipment with altered or disconnected hourmeter where the hours cannot be determined.
9. Equipment normally operated outside the United States.
10. Non-defective parts replaced by other than New Holland dealers.

Coverage

This emission control system warranty applies to the following 450T/PD emission control parts.

Fuel Injection Pump
Fuel Injectors
Turbocharger
Intake Manifold
Exhaust Manifold

FEDERAL EMISSIONS WARRANTY

(California owner's emissions warranty is covered elsewhere)

New Holland warrants that your new 1998 and later heavy-duty off-road diesel engine was designed, built, and equipped to conform to applicable U.S. Environmental Protection Agency regulations for a period of use of five years or 3,000 hours of operation, whichever occurs first.

The new model year, class of diesel engine, and emission application determination for your engine are identified on the emission control information label affixed to the top of your engine's rocker arm cover. The warranty period begins on the date the new equipment is sold to the first retail purchaser.

Any emission control system parts which are proven defective during normal use will be repaired or replaced during the warranty period. The warranty repairs and service will be performed by any authorized New Holland dealer at the dealer's place of business, with no charge for parts or labor (including diagnosis).

As the engine owner, you are responsible to perform all the required maintenance listed in your owner's manual. New Holland will not deny an emission warranty claim solely because you have no record of maintenance; however, a claim may be denied if your failure to perform maintenance resulted in the failure of a warranted part. Receipts covering regular maintenance should be retained in the event of questions and these receipts should be passed on to each subsequent owner of the engine.

It is recommended replacement parts used for maintenance or repairs be New Holland Service Parts to maintain the quality originally designed into your emission certified engine. The use of non-New Holland parts does not invalidate the warranty on other components unless the use of such parts causes damage to warranted parts.

New Holland wishes to assure the emission control systems warranty is being properly administered. If you believe you have not received the service entitled to under this warranty, you should contact the nearest New Holland Branch Office for assistance. The address and phone number of each Branch Office is in your vehicle owner's manual. If additional assistance or information is needed, contact:

Service Department
New Holland North America, Inc.
500 Diller Avenue
New Holland, PA 17557
(717) 355-1121

Please note that the Emission Warranty does not cover:

1. Systems and parts that were not first installed on the new equipment or engine as original equipment by New Holland.
2. Part malfunctions caused by abuse, misuse, improper adjustment, modification, alteration, tampering, disconnection, improper or inadequate maintenance, or use of non-recommended fuels and lubricating oils.
3. Accident caused damage, acts of nature, or other events beyond New Holland's control.
4. Replacement of expendable items made in connection with scheduled maintenance.
5. Parts requiring replacement, inspection or adjustment maintenance intervals for reasons other than being defective.
6. Parts which are not New Holland Service Parts.
7. Loss of time, inconvenience, loss of use of equipment/engine or commercial loss.
8. Equipment with altered or disconnected hourmeter where the hours cannot be determined.
9. Equipment normally operated outside the United States.
10. Non-defective parts replaced by other than New Holland dealers.

Coverage

This emission control system warranty applies to the following 450/NE emission control parts.

Fuel Injection Pump
Fuel Injectors
Intake Manifold
Exhaust Manifold

CONTENTS

Title	Page
Introduction	
To the owner	0-6
Product identification	0-7
Important environmental considerations	0-9
Safety precautions	0-10
Safety decals	0-16
International symbols	0-21
Airborne noise emission	0-22
Section 1 – General Information	
Protective guards	1-2
Controls and instruments – location and function	1-3
Section 2 – Operation	
Safety frame and cab	2-2
Seats	2-14
Handbrake, foot pedals and instrument console	2-19
Analogue and analogue/digital instruments	2-24
Electronic instrument panel	2-30
Starting and stopping the engine	2-46
12 x 12 and 24 x 24 transmission	2-50
16 x 16 transmission	2-58
Differential lock and four wheel drive	2-64
Independent power take-off	2-66
Top link sensing hydraulics	2-70
Electronic Draft Control hydraulics	2-72
Remote control valves	2-80
Three-point linkage	2-86
Drawbars and towing attachments	2-92
Front wheel track adjustment	2-96
Rear wheel track adjustment	2-101
Ballasting and tires	2-106
Section 3 – Lubrication and Maintenance	
General Information	3-1
Lubrication and Maintenance Chart	3-7
Maintenance requirements – Controlled by Warning Lights	3-8
Maintenance requirements – Every 10 Hours or Daily	3-11
Maintenance requirements – Every 50 Hours	3-14
Maintenance requirements – Every 150 Hours	3-21
Maintenance requirements – Every 300 Hours	3-22
Maintenance requirements – Every 600 Hours	3-29
Maintenance requirements – Every 1200 Hours or Annually	3-34
Maintenance requirements – Every 1200 Hours or Two Years	3-41
Maintenance requirements – As Required	3-44
Section 4 – Specifications	
Section 5 – First 50-hour Service Forms	
Section 6 – Index	

TO THE OWNER

GENERAL

This Manual has been prepared to assist you in the correct procedure for running-in, driving and operating and for the maintenance your new tractor. Your tractor is intended for use in normal and customary agricultural applications.

Read this Manual carefully and keep it in a convenient place for future reference. If at any time you require advice concerning your tractor, do not hesitate to contact your New Holland dealer who has factory trained personnel, genuine manufacturers' parts and the necessary equipment to carry out all your service requirements.

Your tractor has been designed and built to give maximum performance, economy and ease of operation under a wide variety of operating conditions. Prior to delivery, the tractor was carefully inspected, both at the factory and by your dealer to ensure that it reaches you in optimum condition. To maintain this condition and ensure trouble-free operation, it is important that the routine services, as specified in section 3 of this Manual, are carried out at the recommended intervals.

CLEANING YOUR TRACTOR

Your tractor is a state-of-the-art machine with sophisticated, electronic controls. Even though every precaution has been taken to safeguard electronic components and connections, the pressure generated by some pressure washers is such that complete protection against water ingress cannot be guaranteed.

- When using a high pressure washer, do not stand too close to the tractor and avoid directing the jet at electronic components, electrical connections, breathers, seals, filler caps, etc.
- Never direct a cold water jet at a hot engine or exhaust.

SAFETY

Pages later in this section list the precautions to be observed to ensure your safety and the safety of others. Read the safety precautions and carefully follow the advice offered **before** operating the tractor.

FIRST 50 HOUR SERVICE

Near the back of this Manual, you will find Section 5 – the 50-hour service reports.

After you have operated the tractor for 50 hours, take your tractor, together with this Manual, to your New Holland dealer. He will then perform the factory recommended 50 hour service and complete the service report sheets (pages and 3). The first sheet (page 1) is the dealer's copy and should be removed by the dealer after the service has been carried out. The second sheet (page 3) is your copy of the service performed. **Ensure that you and the dealer sign both copies.**

SERVICE PARTS

It is pointed out that genuine parts have been examined and approved by the Company. The installation and/or use of 'non-genuine' products could have negative effects upon the design characteristics of your tractor and thereby affect its safety. The Company is not liable for any damage caused by the use of 'non-genuine' parts and accessories.

It is prohibited to carry out any modifications to the tractor unless specifically authorised, in writing, by a New Holland representative.

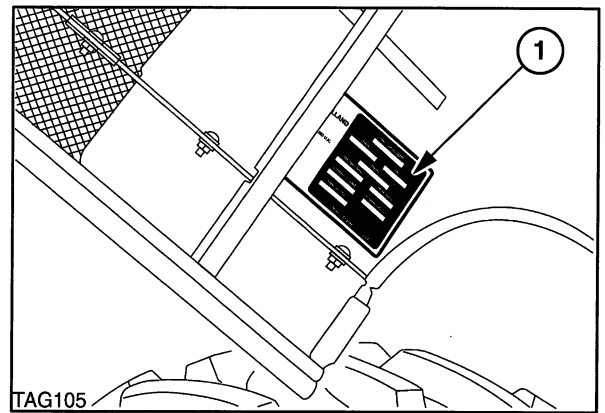
WARRANTY

Your tractor is warranted according to legal rights in your country and the contractual agreement with the selling dealer. No warranty shall, however, apply if the tractor has not been used, adjusted and maintained according to the instructions given in this Operator's Manual.

PRODUCT IDENTIFICATION

The tractor and major components are identified using serial numbers and/or manufacturing codes. Tractor identification information must be supplied to the dealer when requesting parts or service and will also be needed to aid in identifying the tractor if it is ever stolen.

The following provides the locations of the identification data.

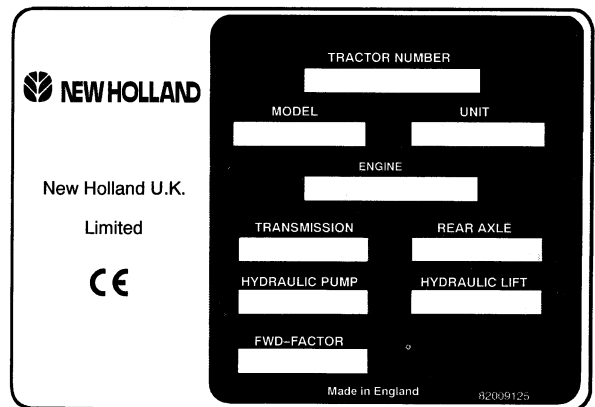


1

Vehicle Identification Plate – Figures 1 and 2

The vehicle identification plate is located on the inside of the hood, on the right-hand side. See Figure 1.

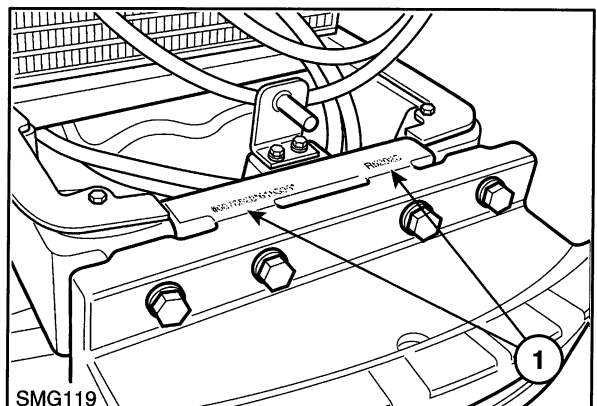
Record the information on the sample identification plate reproduced in Figure 2.



2

Tractor Identification – Figure 3

The serial number and model identification information is stamped on the top of the front support (1). These numbers match those on the vehicle identification plate shown above.



3



4

Cab/Frame Identification – Figure 4

The cab/frame serial number and other information is on the OECD certification plate (1) on cab frame, just beneath the right-hand door. If your tractor does not have a cab a similar plate is fixed to the front, vertical surface of the seat support. Record the serial number below for quick reference.

Cab/Frame Serial No. _____

IMPORTANT ENVIRONMENTAL CONSIDERATIONS

Soil, air and water are vital factors of agriculture and life in general. Where legislation does not yet rule the treatment of some of the substances which are required by advanced technology, common sense should govern the use and disposal of products of a chemical and petrochemical nature.

The following are recommendations which may be of assistance:

- Become acquainted with and ensure that you understand the relative legislation applicable to your country.
- Where no legislation exists, obtain information from suppliers of oils, filters, batteries, fuels, anti-freeze, cleaning agents, etc., with regard to their effect on man and nature and how to safely store, use and dispose of these substances. Agricultural consultants will, in many cases, be able to help you as well.

HELPFUL HINTS

1. Avoid filling tanks using jerrycans or inappropriate pressurised fuel delivery systems which may cause considerable spillage.
2. In general, avoid skin contact with all fuels, oils, acids, solvents, etc. Most of them contain substances which can be harmful to your health.
3. Modern oils contain additives. Do not burn contaminated fuels and/or waste oils in ordinary heating systems.
4. Avoid spillage when draining off used engine coolant mixtures, engine, gearbox and hydraulic oils, brake fluids, etc. Do not mix drained brake fluids or fuels with lubricants. Store them safely until they can be disposed of in a proper way to comply with local regulations.
5. Modern coolant mixtures, i.e. antifreeze and other additives, should be replaced every two years. They should not be allowed to get into the soil but should be collected and disposed of safely.
6. Do not open the air-conditioning system yourself. It contains gases which should not be released into the atmosphere. Your New Holland dealer or air conditioning specialist has specialised equipment for the recovery and charging of air conditioning systems.
7. Repair any leaks or defects in the engine cooling or hydraulic system immediately.
8. Do not increase the pressure in a pressurised circuit as this may lead to the components exploding.
9. Protect hoses during welding as penetrating weld splatter may burn a hole or weaken them, causing the loss of oils, coolant, etc.

SAFETY PRECAUTIONS

A careful operator is the best operator. Most accidents can be avoided by observing certain precautions. To help prevent accidents, read and take the following precautions **before** driving, operating or servicing the tractor. Equipment should be operated only by those who are responsible and instructed to do so.

PRECAUTIONARY STATEMENTS

Throughout this Manual you will see text in *italics*, preceded by the words **NOTE**, **ATTENTION**, **IMPORTANT CAUTION**, **WARNING** or **DANGER**. Such text has the following significance:


Machine Safety


NOTE: *This text stresses a correct operating technique or procedure.*


ATTENTION: *This text warns the operator of potential machine damage if a certain procedure is not followed.*

IMPORTANT: *This text informs the reader of something that he needs to know to prevent minor machine damage if a certain procedure is not followed.*

Personal Safety

 **CAUTION:** *The word CAUTION is used where a safe behavioural practice, according to operating and maintenance instructions and common safety practices will protect the operator and others from accident involvement.*

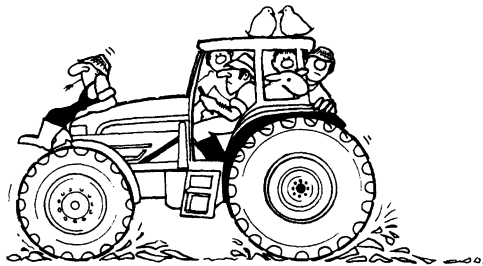
 **WARNING:** *The word WARNING denotes a potential or hidden hazard which could possibly cause serious injury. It is used to warn operators and others to exercise due care and attention to avoid a surprise accident with machinery.*

 **DANGER:** *The word DANGER denotes a forbidden practice in connection with a serious hazard.*

Failure to follow the CAUTION, WARNING and DANGER instructions may result in serious bodily injury or even death.

THE TRACTOR

1. Read the Operator's Manual carefully before using the tractor. Lack of operating knowledge can lead to accidents.
2. Only allow properly trained and qualified persons to operate the tractor.
3. Use the handrails and step plates, when getting on and off the tractor, to prevent falls. Keep steps and platform clear of mud and debris.
4. Replace all missing, illegible or damaged safety decals.
5. Keep safety decals free of dirt or grime.



6. Do not permit anyone but the operator to ride on the tractor. There is no safe place for passengers.
7. Keep children away from the tractor and farm machinery at all times.
8. Do not modify or alter or permit anyone else to modify or alter the tractor or any of its components or any tractor function without first consulting your New Holland dealer.
9. Install all guards before starting the engine or operating the tractor.

DRIVING THE TRACTOR

1. Always sit in the driver's seat while starting or driving the tractor.

2. When driving on public roads, have consideration for other road users. Pull in to the side of the road occasionally to allow any following traffic to pass. Do not exceed the legal speed limit set in your country for agricultural tractors.

3. Use a rotating beacon or other recognised warning when driving on public roads to indicate that the vehicle is slow moving and is a possible hazard.

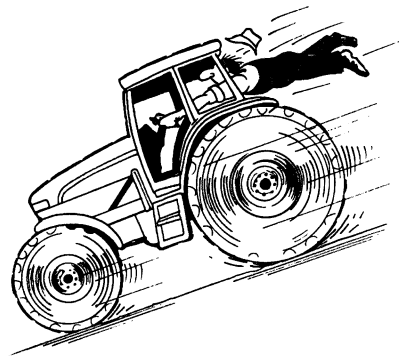
4. Dip the tractor lights when meeting a vehicle at night. Make sure the lights are adjusted to prevent blinding the driver of an oncoming vehicle.

5. Reduce speed before turning or applying the brakes. Ensure that both brake pedals are locked together when travelling at road speeds or when on public roads. Brake both wheels simultaneously when making an emergency stop.



6. On four wheel drive tractors, the drive to the front axle is automatically engaged, to provide four wheel braking, when both footbrakes are applied. Owners should be aware of the effectiveness of four wheel braking which greatly enhances braking performance. Appropriate care should be exercised during hard braking.

7. Use extreme caution and avoid hard application of the tractor brakes when towing heavy loads at road speeds.



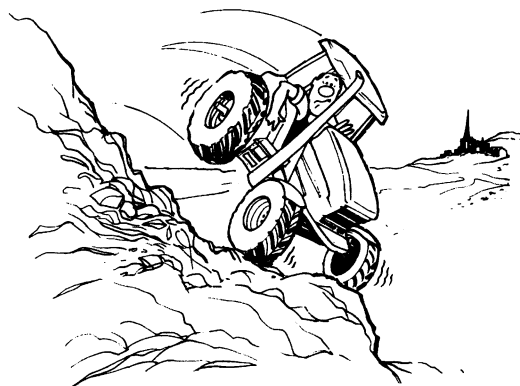
8. Keep the tractor in the same gear when going downhill as would be used when going uphill. Do not coast or freewheel down hills.

9. Any towed vehicle whose total weight exceeds that of the towing tractor must be equipped with brakes for safe operation.

10. Always disengage the differential lock when turning. When engaged, the differential lock will prevent the tractor from turning.

11. Always check overhead clearance, especially when transporting the tractor. Watch where you are going, especially at row ends, on roads and around trees and low overhanging obstacles.

12. To avoid overturns, drive the tractor with care and at safe speeds, especially when operating over rough ground, when crossing ditches or slopes and when turning corners.



13. Use extreme caution when operating on steep slopes.

14. If the tractor becomes stuck or the tires are frozen to the ground, reverse the tractor out to prevent overturning.

Thank you so much for reading.
Please click the “Buy Now!”
button below to download the
complete manual.



After you pay.

You can download the most
perfect and complete manual in
the world immediately.

Our support email:

ebooklibonline@outlook.com