

NEW HOLLAND

555E

575E

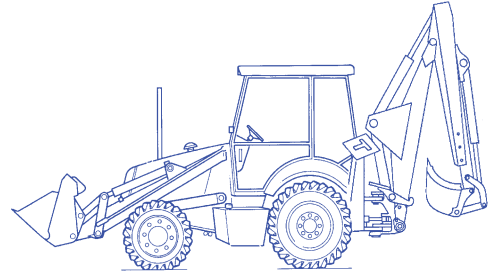
655E

675E

Serial #031009910 and above

86570568 4/98

# OPERATOR'S MANUAL



NEW HOLLAND

## TO THE OWNER:

The warranty coverage that is extended to your backhoe loader is explained in the Warranty and Limitation of Liability form. Your dealer will provide you with a copy of the warranty and retain a copy which you have signed. After you read the warranty, ask your dealer to explain any points that you may not understand.

This backhoe loader was designed to power and propel itself. It is intended to dig, load and move material in normal and customary applications.

Do not modify or alter or permit anyone else to modify or alter this backhoe loader or any of its components or any backhoe loader function without first consulting an authorized New Holland dealer. If you have any questions regarding backhoe loader modifications, contact New Holland North America, Inc., 500 Diller Ave., New Holland, PA 17557.

Your safety and the safety of those around you depends upon the care and good judgment you use while operating this equipment. Read the safety precautions carefully.

After you have operated the backhoe loader for 50 hours, take your backhoe loader and this manual to your selling dealer. He will perform the factory recommended 50-hour service. You will be responsible for the cost of lubricants, fluids, filters and other items replaced as part of normal maintenance. Prior to taking the backhoe loader to your selling dealer for service, it is recommended that you contact them to determine any other charges for which you may be responsible.

All data given in this book is subject to production variations. Dimensions and weights are approximate only and the illustrations do not necessarily show tractors in standard condition. For exact information about any particular backhoe loader please consult your New Holland dealer.



**CAUTION: THIS SYMBOL IS USED THROUGHOUT THIS BOOK WHENEVER PERSONAL SAFETY IS INVOLVED. TAKE TIME TO READ AND FOLLOW THE INSTRUCTIONS. BE CAREFUL!.**

**CAUTION: PICTURES IN THIS MANUAL MAY SHOW PROTECTIVE SHIELDING OPEN OR REMOVED TO BETTER ILLUSTRATE A PARTICULAR FEATURE OR ADJUSTMENT.**

**BE CERTAIN, HOWEVER, TO CLOSE OR REPLACE ALL SHIELDING BEFORE OPERATING THE MACHINE.**

## IMPROVEMENTS

New Holland North America, Inc. is continually striving to improve its products. We reserve the right to make improvements or changes when it becomes practical and possible to do so, without incurring any obligation to make changes or additions to the equipment sold previously.

**CALIFORNIA**

**Proposition 65 Warning**

**Diesel engine exhaust and some of its constituents are known to the State of California to cause cancer, birth defects, and other reproductive harm.**



**NEW HOLLAND WARRANTY AND LIMITATION OF LIABILITY - INDUSTRIAL PRODUCTS**

**COVERAGE PROVIDED**

New Holland North America, Inc. or New Holland Canada, Ltd., hereinafter called "Company" warrants to the retail purchaser of each new Product (as listed below) that the Selling Dealer will repair or replace any part thereof found to be defective in materials or workmanship within the following periods. This warranty is for the benefit of the original or subsequent purchaser when purchased from an authorized New Holland dealer.

**BASIC WARRANTY**

<b>Product</b>	<b>Warranty Period (whichever comes first)</b>
Industrial Tractors .....	12 Months
Industrial Tractor Loaders .....	12 Months
Industrial Backhoe Loaders .....	12 Months
Industrial Tractor Attachments .....	12 Months
Skid-Steer Loaders and Attachments .....	12 Months
*Composter .....	12 Months
*Commercial Mower and Attachments .....	24 Months or 1000 Hours
Replacement Parts .....	90 days or to end of Basic Warranty (whichever is longer)

\*ESP is not available for this product.

**LIMITATIONS, INCLUDING DISCLAIMER OF IMPLIED WARRANTIES AND CONSEQUENTIAL DAMAGES**

This warranty gives you specific legal rights and you may also have other rights which vary, depending on state or provincial laws.

New Holland North America, Inc. or New Holland Canada, Ltd. does not authorize any person or dealer to create for it any other obligation or liability in connection with these products. TO THE EXTENT ALLOWED BY LAW, ANY IMPLIED WARRANTY OF MERCHANTABILITY OR FITNESS APPLICABLE TO THIS PRODUCT IS LIMITED TO THE STATED DURATION OF THIS WRITTEN WARRANTY. NEITHER COMPANY NOR THE SELLING DEALER SHALL BE LIABLE FOR LOSS OF THE USE OF THE PRODUCT, LOSS OF TIME, INCONVENIENCE, COMMERCIAL LOSS OR CONSEQUENTIAL DAMAGES.

Some states and provinces do not allow limitations on how long an implied warranty will last or the exclusion or limitation of incidental or consequential damages, so the above limitations or exclusions may not apply to you.

The remedy of repair or replacement of a defective part during the warranty period herein specified shall be the purchaser's exclusive remedy.

**EXTENDED SERVICE PLAN (ESP)**

When offered by the Company, the option to purchase an Extended Service Plan has been explained and:

- I accept and have signed the completed registration form
- I decline the Extended Service Plan
- I will consider later (within 180 days)

**PROTECTIVE EQUIPMENT**

Rollover protective structure (ROPS) and seat belts are provided as standard equipment on all New Holland industrial tractors, skid-steer loaders and commercial mowers and we strongly recommend their use. Customers who elect to remove or not use this protection do so at their own risk.

- I acknowledge the existence of OSHA regulations pertaining to ROPS/FOPS. \_\_\_\_\_
- A PTO master shield, if applicable, has been installed on the machine. \_\_\_\_\_
- The correct Operator's Manual has been furnished. \_\_\_\_\_
- Safety precautions were explained to me by the Selling Dealer. \_\_\_\_\_

**ACKNOWLEDGEMENT/WARRANTY TRANSFER**

The blank spaces under "Protective Equipment" have been filled in and are correct, and I acknowledge that I have read and I accept this Warranty and Limitation of Liability.

Purchaser _____	Dealer _____ Code _____
Address _____	Address _____
City _____ State _____ Zip _____	City _____ State _____ Zip _____
Model _____ Serial No. _____	Retail Date _____ / _____ / _____
Attachment Model _____ SN _____	Extended Service Plan Expires on _____ / _____ / _____ (Subject to confirmation by NH)
Attachment Model _____ SN _____	
Purchaser _____ Date _____	Dealer _____ Date _____
Signature	Signature

---

# New Holland Warranty Detail

The warranty period will begin on date of original retail sale or date of original use, whichever is earlier.

- The obligation of Company to the purchaser under this warranty is limited to the repair or replacement of defective parts by an authorized New Holland dealer and will be done free of charge for both parts and labor using genuine New Holland replacement parts. Repair or replacement in accordance with this warranty shall constitute fulfillment of all liabilities of Company and the Selling Dealer in respect to such Products.
- Repairs or replacements will be performed by the Selling Dealer, following delivery of the Product by the purchaser to the Dealer's place of business. When the purchaser has moved a long distance from the Selling Dealer, or the Selling Dealer is no longer in business, any New Holland dealer authorized to sell and service the described Products may perform the repair at its dealership.
- The Selling Dealer shall review these warranty provisions with the purchaser prior to retail sale, secure his acknowledgement of delivery of this warranty and record the date of original retail sale or date of original use.
- To obtain warranty service, the purchaser must (1) report the product defect to an authorized New Holland dealer and request repair within the applicable warranty term and (2) present evidence of the warranty start date.

## WHAT IS NOT COVERED BY THE WARRANTY?

This warranty shall NOT apply under the following conditions:

- (i) With respect to vendor warranty items such as tires, tubes, and attachments which shall be warranted by their manufacturer, or local representative thereof.
- (ii) If the unit has been subject to misapplication, abuse, misuse, negligence of proper maintenance or other negligence, fire or other accident.
- (iii) If parts or attachments other than those made or marketed by New Holland North America, Inc. or New Holland Canada, Ltd., have been used in connection with the unit, and in the sole judgment of Company such use affects its performance, stability or reliability.
- (iv) If the unit has been altered or repaired outside of a New Holland dealership in a manner which, in the sole judgment of Company, affects its performance, stability or reliability.
- (v) Batteries are covered by a separate pro rata adjustment warranty. The pro-rata plan covers the battery fully for the basic product warranty period as indicated, with any remaining warranty pro-rated according to the months of service.
- (vi) The purchaser shall be responsible for payment of dealer travel time to the machine or to deliver the machine to the dealer's service shop for repair. New Holland warranty does not cover delivery charges or travel time.
- (vii) The Company shall have no liability for used equipment sold beyond the specified coverage period.
- (viii) No warranty shall apply to damage resulting from accident or damage caused by environment (such as exposure to corrosive material). The Company shall not be responsible for rental equipment used to replace the equipment being repaired.
- (ix) This warranty shall NOT apply to normal maintenance services (such as tune-ups, fuel injection system cleaning or wheel, brake and clutch adjustments), to normal replacement of service items (such as filters and brake or clutch linings), or to normal deterioration due to use or exposure (such as belts and exterior finish). New Holland shall not be responsible for normal replacement parts such as cutting knives, chains, belts, clutches, filters, oil, or other parts which are worn out, unless they are determined to be defective in material or workmanship.
- (x) This warranty shall NOT apply to any New Holland Product which is retailed or distributed by anyone other than New Holland North America, Inc. or New Holland Canada, Ltd., through its authorized dealers. This warranty shall NOT apply to any Product which is normally operated outside of the United States, and/or Canada.
- (xi) This warranty shall NOT apply if the purchaser, insurance company, or any other entity or individual acting on behalf of the purchaser seeks reimbursement for the dollar value of the repair(s) or replacement(s) covered under this warranty.

## RIGHT TO MAKE DESIGN CHANGES

Company reserves the right to make changes in the design and other changes in its products at any time and from time to time without notice and without incurring any obligation with respect to any product previously ordered from it, sold or shipped by it.

---

# FEDERAL EMISSIONS WARRANTY

(California owner's emissions warranty is covered elsewhere)

New Holland warrants that your new 1998 and later heavy-duty off-road diesel engine was designed, built, and equipped to conform to applicable U.S. Environmental Protection Agency regulations for a period of use of five years or 3,000 hours of operation, whichever occurs first.

The new model year, class of diesel engine, and emission application determination for your engine are identified on the emission control information label affixed to the top of your engine's rocker arm cover. The warranty period begins on the date the new equipment is sold to the first retail purchaser.

Any emission control system parts which are proven defective during normal use will be repaired or replaced during the warranty period. The warranty repairs and service will be performed by any authorized New Holland dealer at the dealer's place of business, with no charge for parts or labor (including diagnosis).

As the engine owner, you are responsible to perform all the required maintenance listed in your owner's manual. New Holland will not deny an emission warranty claim solely because you have no record of maintenance; however, a claim may be denied if your failure to perform maintenance resulted in the failure of a warranted part. Receipts covering regular maintenance should be retained in the event of questions and these receipts should be passed on to each subsequent owner of the engine.

It is recommended replacement parts used for maintenance or repairs be New Holland Service Parts to maintain the quality originally designed into your emission certified engine. The use of non-New Holland parts does not invalidate the warranty on other components unless the use of such parts causes damage to warranted parts.

New Holland wishes to assure the emission control systems warranty is being properly administered. If you believe you have not received the service entitled to under this warranty, you should contact the nearest New Holland Branch Office for assistance. The address and phone number of each Branch Office is in your vehicle owner's manual. If additional assistance or information is needed, contact:

Service Department  
New Holland North America, Inc.  
500 Diller Avenue  
New Holland, PA 17557  
(717) 355-1121

Please note that the Emission Warranty does not cover:

1. Systems and parts that were not first installed on the new equipment or engine as original equipment by New Holland.
2. Part malfunctions caused by abuse, misuse, improper adjustment, modification, alteration, tampering, disconnection, improper or inadequate maintenance, or use of non-recommended fuels and lubricating oils.
3. Accident caused damage, acts of nature, or other events beyond New Holland's control.
4. Replacement of expendable items made in connection with scheduled maintenance.
5. Parts requiring replacement, inspection or adjustment maintenance intervals for reasons other than being defective.
6. Parts which are not New Holland Service Parts.
7. Loss of time, inconvenience, loss of use of equipment/engine or commercial loss.
8. Equipment with altered or disconnected hourmeter where the hours cannot be determined.
9. Equipment normally operated outside the United States.
10. Non-defective parts replaced by other than New Holland dealers.

## Coverage

This emission control system warranty applies to the following 450 and 450T engine emission control parts.

Fuel Injection Pump  
Fuel Injectors  
Turbocharger  
Intake Manifold  
Exhaust Manifold  
Boost Pressure Tubing-connection to Aneroid Device ON F.I.P.

---

# TABLE OF CONTENTS

<b>Section 1 - Introduction</b>	
Quick Reference Guide	1-1
Product Identification	1-2
Important Ecological Considerations	1-5
Safety Precautions	1-6
Safety Decals	1-14
Safety Features and Machine Security	1-17
Universal Symbols	1-19
<b>Section 2 - General Information</b>	
Quick Reference Guide	2-1
Machine	2-2
Cab	2-4
Controls and Instruments - Overview and Function	2-8
Transmission	2-18
Loader	2-24
Backhoe	2-26
Towing	2-34
<b>Section 3 - Controls and Operation</b>	
Quick Reference Guide	3-1
Cab Doors and Windows	3-2
Seat Adjustment	3-3
Climate Controls	3-6
Hand and Foot Controls - Pedals and Levers (Power Shuttle)	3-10
Brakes (Power Shuttle)	3-11
Hand and Foot Controls - Pedals and Levers (Power Shift)	3-12
Brakes (Power Shift)	3-13
Front Instrument Panel	3-14
Side Mounted Instrument Panel	3-17
Transmission Controls (4x4 Power Shuttle)	3-38
Transmission Controls (4x2 Power Shift)	3-42
Operating the Engine	3-49
Loader Controls	3-55
Backhoe Controls	3-66
Ballasting and Tires	3-80
<b>Section 4 - Lubrication and Maintenance</b>	
Filling and Service Points	4-1
Warning Lights	4-2
Lubrication and Maintenance Table	4-4
Fuels	4-5
Loader Support	4-6
Daily Service or as required	4-7
Air Cleaner Servicing	4-11
50-hour Service	4-12
300-hour Service	4-20
600-hour Service	4-25
1200-hour/12 Month Service	4-31
1200-hour/24 Month Service	4-35
General Maintenance - As Required	4-36
Bulb Replacement	4-40
Fuses	4-42
<b>Section 5 - Trouble-shooting</b>	5-1
<b>Section 6 - Specifications</b>	6-1
<b>Index</b>	6-17
<b>Predelivery Service</b>	6-21
<b>Delivery Report</b>	6-25
<b>First 50-hour Service</b>	6-29

---

# OWNER ASSISTANCE

We at New Holland and your New Holland dealer want you to be completely satisfied with your investment. Normally any problems with your equipment will be handled by your dealer's Service Department. Sometimes, however, misunderstanding can occur. If your problem has not been handled to your satisfaction, we suggest the following.

1. Contact the owner or General Manager of the dealership, explain the problem, and request assistance. When additional assistance is needed, your dealer has direct access to our branch office.
2. If you cannot obtain satisfaction by doing this, contact the branch office in your area and provide them with:
  - Your name, address, and telephone number
  - Machine model and serial number
  - Dealership name and address
  - Machine purchase date and amount of use
  - Nature of problem

## **Atlanta**

4727 N Royal Atlanta Dr Suite P  
Caller Service 105018  
Tucker, GA 30085-5018  
Telephone: (770) 723-3605  
States: AL, FL, GA, KY, MS,  
NC, SC, TN, VA

## **Dallas**

1340 Walnut Hill Lane Bldg 2  
P.O. Box 167528  
Irving, TX 75016-7528  
Telephone: (972) 756-4919  
States: AR, AZ, CA, CO, HI, KS,  
LA, MO, NM, NV, OK, TX, UT

## **Minneapolis**

6301 W Old Shakopee Rd  
P.O. Box 1342  
Minneapolis, MN 55440-1342  
Telephone: (612) 887-4231  
States: AK, IA, ID, IL, MN, MT,  
ND, NE, OR, SD, WA, WI, WY

## **New Holland**

200 Commerce St.  
P.O. Box 527  
Mountville, PA 17554-0527  
Telephone: (717) 285-8302  
States: CT, DE, IN, MA, MD, ME,  
MI, NH, NJ, NY, OH, PA, RI, VT,  
WV

## **Calgary**

Suite 220  
3030 Third Ave. NE  
Box 1616, Stn M  
Calgary, AB  
CANADA T2P 2M7  
Telephone: (403) 569-3208

3. If you need further assistance contact:

*Service Department  
Mail Station 500  
New Holland North America, Inc.  
New Holland, PA 17557*

When contacting your branch office or Service Department, be aware that your problem will likely be resolved in the dealership using the dealer's facilities, equipment, and personnel. So it is important that your initial contact be with the dealer.

A Service Publications Catalog & Order Form is available which lists the operator's and service manuals for many prior model and most current model Ford - New Holland - Versatile tractors, equipment, and consumer products. To obtain a copy of this catalog, please call 1-800-635-4913.



---

# PRECAUTIONARY STATEMENTS

## PERSONAL SAFETY

Throughout this manual and on machine decals, you will find precautionary statements (“CAUTION”, “WARNING”, and “DANGER”) followed by specific instructions. These precautions are intended for the personal safety of you and those working with you. Please take the time to read them.



**CAUTION: THE WORD “CAUTION” IS USED WHERE A SAFE BEHAVIORAL PRACTICE ACCORDING TO OPERATING AND MAINTENANCE INSTRUCTIONS AND COMMON SAFETY PRACTICES WILL PROTECT THE OPERATOR AND OTHERS FROM ACCIDENT INVOLVEMENT.**



**WARNING: THE WORD “WARNING” DENOTES A POTENTIAL OR HIDDEN HAZARD WHICH HAS A POTENTIAL FOR SERIOUS INJURY. IT IS USED TO WARN OPERATORS AND OTHERS TO EXERCISE EVERY APPROPRIATE MEANS TO AVOID A SURPRISE INVOLVEMENT WITH MACHINERY.**



**DANGER: THE WORD “DANGER” DENOTES A FORBIDDEN PRACTICE IN CONNECTION WITH A SERIOUS HAZARD.**

**FAILURE TO FOLLOW THE “CAUTION”, “WARNING”, AND “DANGER” INSTRUCTIONS MAY RESULT IN SERIOUS BODILY INJURY OR DEATH.**

## MACHINE SAFETY

Additional precautionary statements (“ATTENTION” and “IMPORTANT”) are followed by specific instructions. These statements are intended for machine safety.

*ATTENTION: The word “ATTENTION” is used to warn the operator of potential machine damage if a certain procedure is not followed.*

*IMPORTANT: The word “IMPORTANT” is used to inform the reader of something he needs to know to prevent minor machine damage if a certain procedure is not followed.*

# SECTION 1

## INTRODUCTION TO THE OWNER

### SAFETY

Pages 1-6 through to 1-13 list the precautions to be observed, to ensure your safety and the safety of others. Read the precautions and follow the advice offered BEFORE operating the machine.

### SERVICE PARTS

The company would like to point out that 'non-genuine' parts have not been examined and approved by the Company. The installation and/or use of such products could have negative effects upon the design characteristics of your machine and thereby affect its safety. The Company is not liable for any damage caused by the use of 'non-genuine' parts and accessories.

### QUICK REFERENCE GUIDE

Page	Contents
1-2 .....	Product Identification
1-5 .....	Ecological Considerations
1-6 .....	Safety Precautions
1-14 .....	Safety Decals
1-17 .....	Machine Safety and Security
1-18 .....	On Road Travel Requirements
1-19 .....	Universal Symbols

## PRODUCT IDENTIFICATION

Your Backhoe Loader and its major components are identified by serial numbers and letters for recognition in After Sales Service. The following information provides the locations of these identification plates, stamped numbers and examples of what can be found on your machine.

### VEHICLE SERIAL NUMBER (1), Figure 1-1.

The Serial Number is stamped on the top of the right hand main frame, in front of the right hand loader post, in position (1). . . . . Example: \*031005017\*

**NOTE:** The Serial Number and identification numbers of components may be required by your dealer when requesting parts or service. These numbers will also be required as an aid to identifying the machine if it is ever stolen. Keep them safe.

### VEHICLE IDENTIFICATION PLATES (2), Figure 1-1.

The machine identification plates are located on the right-hand loader post, as shown at position (2). Record the data of your machine below.

MODEL/TECHNICAL TYPE \_\_\_\_\_  
 Example: \*655E.699.510.700\*

UNIT SERIAL NO. \_\_\_\_\_  
 Example: \*031005017\*

YEAR \_\_\_\_\_  
 Example: \*1995\*

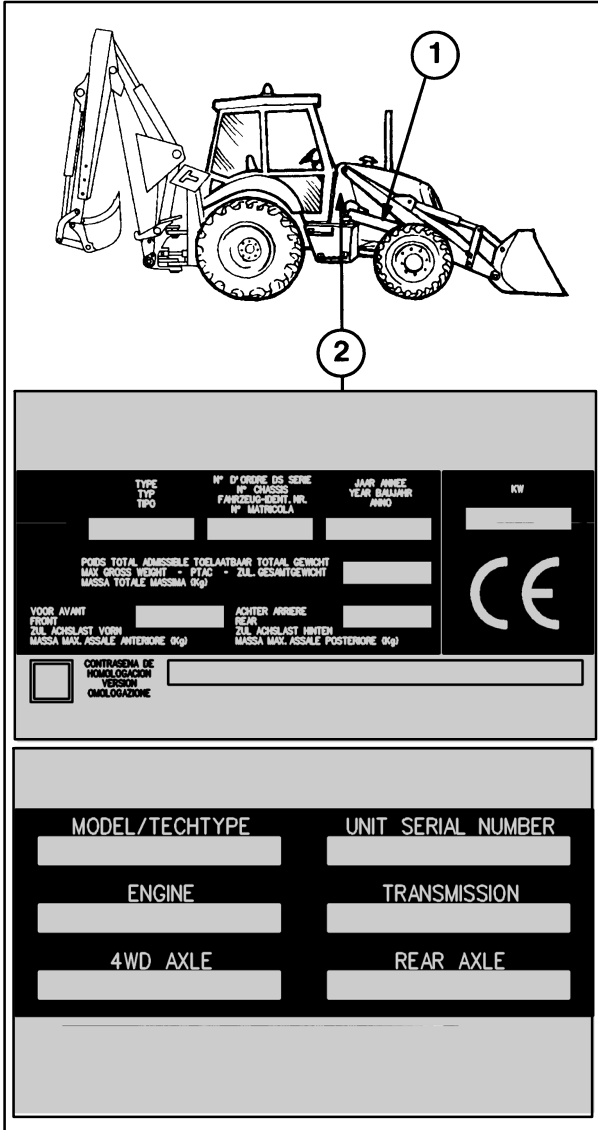
### ENGINE IDENTIFICATION, Figure 1-2.

The engine identification information is located on the right hand engine sump rail. Record the information below for quick reference.

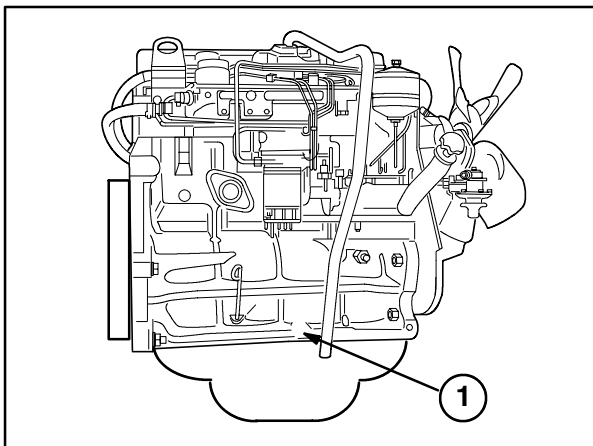
MODEL NO. \_\_\_\_\_  
 Example: \*EA5\*

SERIAL NO. \_\_\_\_\_  
 Example: \*57018\*

DATE CODE. \_\_\_\_\_  
 Example: \*5J25\* = 5(1995), J(SEPTEMBER), 25(DAY)



1-1



1-2

**FOUR WHEEL DRIVE IDENTIFICATION,****Figure 1-3**

The serial number and axle type is printed on the plate (1), located on the front of the axle housing. Record the information below for quick reference.

AXLE TYPE \_\_\_\_\_

Example: \*26-18\*

SERIAL NO. \_\_\_\_\_

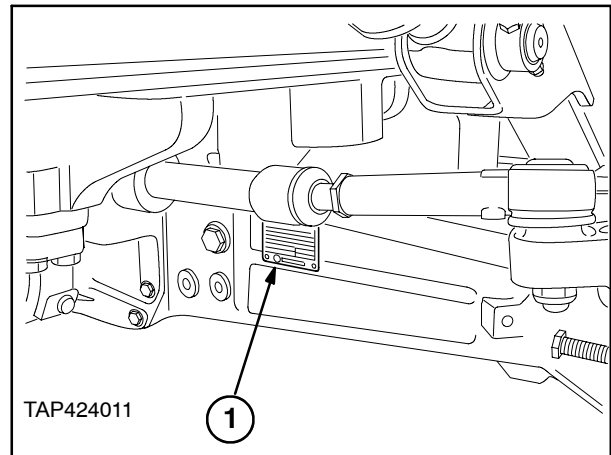
Example: \*000102\*

ROTATION \_\_\_\_\_

Example: LH = Left Hand RH = Right Hand

RATIO \_\_\_\_\_

Example: 12.33 to 1 - 12.8 to 1



1-3

**TRANSMISSION IDENTIFICATION,  
4x4 POWER SHUTTLE, Figure 1-4**

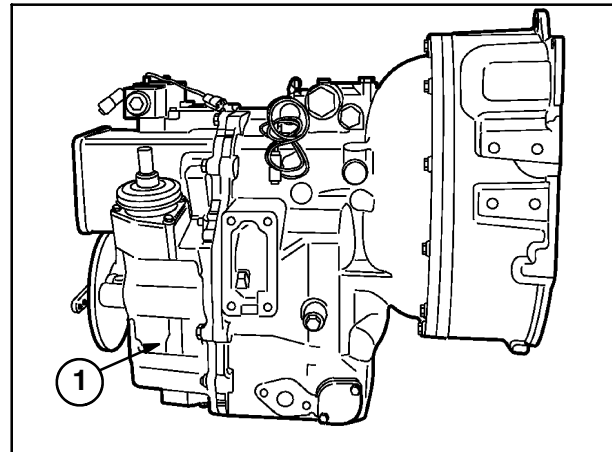
The serial number and type are printed on the plate (1), on the lower right side of the transmission. Record the information below for quick reference.

MODEL NO. \_\_\_\_\_

Example: \*COM-T4-2025\*

SERIAL NO. \_\_\_\_\_

Example: \*15647 E95 01\*



1-4

**TRANSMISSION IDENTIFICATION  
4x2 POWER SHIFT, Figure 1-5**

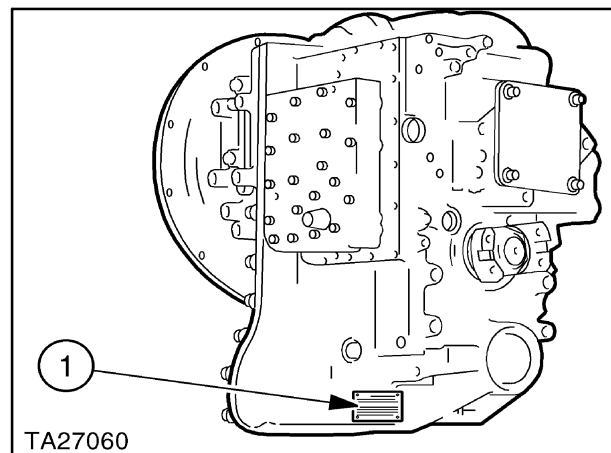
The serial number and type is printed on the plate (1), on the lower part of the rear of the transmission. Record the information below for quick reference.

MODEL NO. \_\_\_\_\_

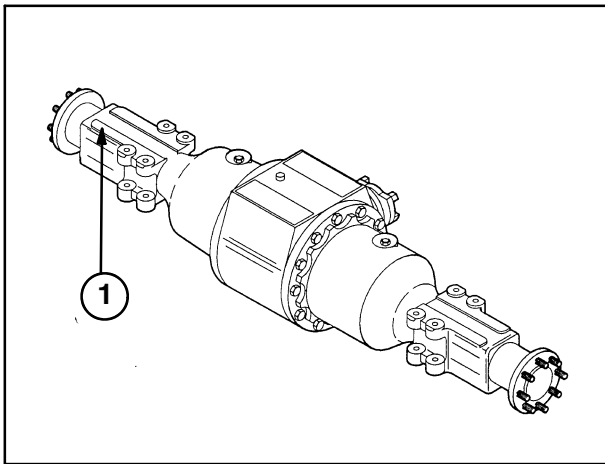
Example: \*11.11 - FT16000-1\*

SERIAL NO. \_\_\_\_\_

Example: \*PBEA 000201\* P=96, BE= Belgium



1-5



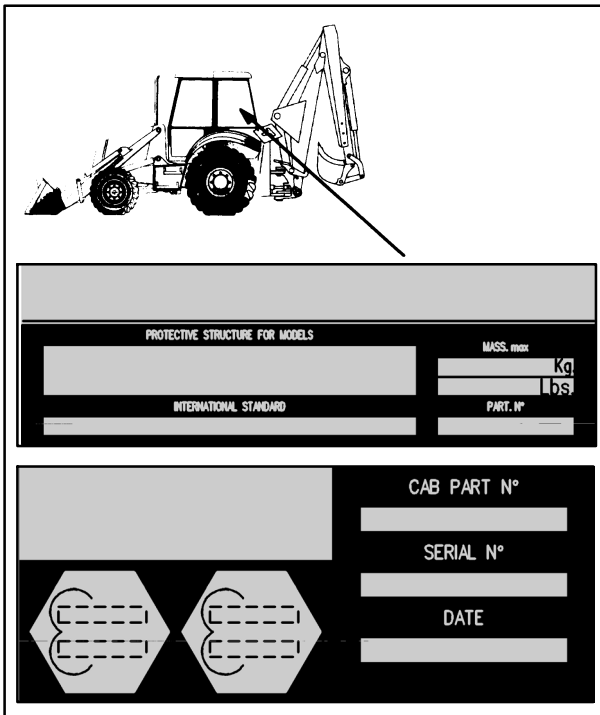
1-6

**REAR AXLE IDENTIFICATION, Figure 1-6**

The serial number and date codes (1) are stamped on the left side of the rear axle housing. Record the serial number below for quick reference.

MODEL NO. \_\_\_\_\_  
 Example: \*85801201\*

DATE CODE \_\_\_\_\_  
 Example: 5D05=5(1995), D(APRIL), 05(DAY)



1-7

**CAB/ROPS IDENTIFICATION PLATES, Figure 1-7**

The cab or ROPS serial number and details are printed on the certification plate's (1) on the rear left hand window rail on cab units and on the upper left hand roof rail on ROPS units. Record the serial number below for quick reference.

Serial No. \_\_\_\_\_

Date Code \_\_\_\_\_

Thank you so much for reading.  
Please click the “Buy Now!”  
button below to download the  
complete manual.



After you pay.

You can download the most  
perfect and complete manual in  
the world immediately.

Our support email:

[ebooklibonline@outlook.com](mailto:ebooklibonline@outlook.com)