

m-3640

NEW HOLLAND

42" Snowthrower

For Garden Tractors

Model No.

715706006—T9BK0001 & Up

OPERATOR'S MANUAL



NEW HOLLAND

SERVICE

Contents

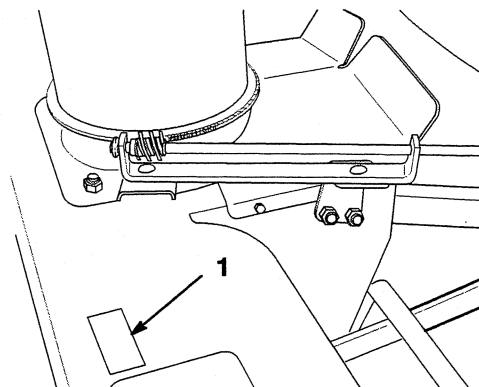
	Page
Introduction	2
Safety	3
General Snowthrower Safety	3
Preparation	3
Operation	3
Maintenance and Storage	4
New Holland Snowthrower Safety	4
Safety and Instruction Decals	5
Installation	5
Loose Parts	5
Assembly	6
Tractor Set-up	7
Installing the Snowthrower on the Tractor	7
Removing the Snowthrower	9
Operation	11
Operating the Power Take Off (PTO)	11
Attachment Lift Lever	11
Adjusting The Discharge Chute	12
Tips for Throwing Snow	13
Maintenance	13
Service Interval Chart	13
Greasing and Lubrication	14
Adjusting the Skids	14
Reversing the Scraper Blade	15
Adjusting Drive Chain Tension	15
Storage	15

Introduction

Thank you for purchasing a New Holland product.

All of us at New Holland want you to be completely satisfied with your new product, so feel free to contact your local Authorized Service Dealer for help with service, genuine replacement parts, or other information you may require.

Whenever you contact your Authorized Service Dealer or the factory, always know the model and serial numbers of your product. These numbers will help the Service Dealer or Service Representative provide exact information about your specific product. You will find the model and serial number plate located in a unique place on the product as shown below.



m-3448

1. Model and Serial Number Plate

For your convenience, write the product model and serial numbers in the space below.

NEW HOLLAND	
MODEL NO.	SERIAL NO.
COMPONENT	
NEW HOLLAND NORTH AMERICA, INC.	
<small>MADE IN U.S.A.</small>	

Read this manual, and all related equipment manuals, carefully to learn how to operate and maintain your product correctly. Reading this manual will help you and others avoid personal injury and damage to the product. Although we design, produce and market safe, state-of-the-art products, you are responsible for using the product properly and safely. You are also responsible for training persons, who you allow to use the product, about safe operation.

The warning system in this manual identifies potential hazards and has special safety messages that help you and others avoid personal injury, even death. **DANGER**, **WARNING** and **CAUTION** are signal words used to identify the level of hazard. However, regardless of the hazard, be extremely careful.

DANGER signals an extreme hazard that will cause serious injury or death if the recommended precautions are not followed.


WARNING signals a hazard that may cause serious injury or death if the recommended precautions are not followed.



CAUTION signals a hazard that may cause minor or moderate injury if the recommended precautions are not followed.



Two other words are also used to highlight information. “Important” calls attention to special mechanical information and “Note” emphasizes general information worthy of special attention.

The left and right side of the machine is determined by sitting on the seat in the normal operator’s position.

Safety

Improper use or maintenance by the operator or owner can result in injury. To reduce the potential for injury, comply with the safety instructions in the traction unit operator’s manual and always pay attention to the safety alert  symbol, which means CAUTION, WARNING, or DANGER—“personal safety instruction.” Failure to comply with the instruction may result in personal injury or death.

 DANGER 	
POTENTIAL HAZARD	
<ul style="list-style-type: none">• Rotating auger can cut off fingers, hands or other body parts and throw objects.	
WHAT CAN HAPPEN	
<ul style="list-style-type: none">• Contact with rotating auger and thrown debris can cause severe injury or death.	
HOW TO AVOID THE HAZARD	
<ul style="list-style-type: none">• Stay away from the discharge and auger openings while operating the snowthrower.• Keep your hands, feet, and any other part of your body or clothing away from concealed, moving or rotating parts.• Use a stick, not your hand, to remove obstructions from the discharge chute or auger housing.• Before adjusting, cleaning, repairing and inspecting the snowthrower and before unclogging the discharge chute, shut off the engine and wait for all moving parts to stop. Move the power take off (PTO) to “OFF” and rotate the ignition key to “OFF.” Remove the ignition key.	

 WARNING 	
POTENTIAL HAZARD	
<ul style="list-style-type: none">• Stones and other foreign objects may be picked up and thrown by the rotor blades.	
WHAT CAN HAPPEN	
<ul style="list-style-type: none">• Thrown objects can cause serious personal injury to operator or bystanders.	
HOW TO AVOID THE HAZARD	
<ul style="list-style-type: none">• Keep the work area free of all objects that could be thrown by the rotor blades.• Keep all children and pets away from area of operation.	

General Snowthrower Safety

The following instructions have been adapted from the ANSI/OPEI and ISO standards.

Preparation

- Thoroughly inspect the area where the equipment is to be used and remove all doormats, sleds, boards, wires, and other foreign objects.
- Do not operate the equipment without wearing adequate winter outer garments. Wear footwear that will improve footing on slippery surfaces.
- Adjust the auger housing height to clear gravel or crushed rock surface.
- Never attempt to make any adjustments while the engine is running, except when specifically recommended by New Holland.
- Let engine and machine adjust to outdoor temperatures before starting to clear snow.
- The operation of any powered machine can result in foreign objects being thrown into the eyes. Always wear safety glasses or eye shields during operation or while performing an adjustment or repair.

Operation

- Do not put hands or feet near or under rotating parts. Keep clear of the discharge opening at all times.
- Exercise extreme caution when operating on or crossing gravel drives, walks, or roads. Stay alert for hidden hazards or traffic. Do not carry passengers.

- After striking a foreign object, stop the engine, remove the wire(s) from the spark plug(s), thoroughly inspect the snowthrower for any damage, and repair the damage before restarting and operating the snowthrower.
- If the unit should start to vibrate abnormally, stop the engine and check immediately for the cause. Vibration is generally a warning of trouble.
- Stop the engine whenever you leave the operating position, before unclogging the auger/impeller housing or discharge chute, and when making any repairs, adjustments, or inspections.
- When cleaning, repairing, or inspecting, make certain the auger/impeller and all moving parts have stopped. Disconnect the spark plug wire(s) and keep the wire away from the plug to prevent someone from accidentally starting the engine.
- Do not clear snow across the face of slopes. Exercise extreme caution when changing direction on slopes. Do not attempt to clear steep slopes.
- Never operate the snowthrower without proper guards, plates, or other safety protective devices in place.
- Never operate the snow thrower near glass enclosures, automobiles, window wells, drop-offs, and the like without proper adjustment of the snow discharge angle. Keep children and pets away.
- Do not overload the machine capacity by attempting to clear snow at too fast a rate.
- Never operate the machine at high transport speeds on slippery surfaces. Look behind and use care when moving in reverse.
- Never direct discharge at bystanders or allow anyone in front of the unit.
- Disengage power to the auger/impeller when the snowthrower is transported or not in use.
- Never operate the snowthrower without good visibility or light.

Maintenance and Storage

- Check fasteners at frequent intervals for proper tightness to be sure the equipment is in safe working condition.
- Always refer to the operator's manual for important details if the snowthrower is to be stored for an extended period.

- Maintain or replace safety and instruction labels, as necessary.
- Run the machine a few minutes after throwing snow to prevent freeze-up of the auger/impeller.

New Holland Snowthrower Safety

The following list contains safety information specific to New Holland products or other safety information that you must know that is not included in the ANSI or ISO standards.

- **The rotating auger/impeller or rotor blades can cut off or injure fingers or hands.** Stay in the operator's position and away from the discharge opening while operating the snowthrower. **Keep your face hands, feet, and any other part of your body or clothing away from concealed, moving, or rotating parts.**
- Before adjusting, cleaning, repairing, and inspecting the snowthrower, and before unclogging the discharge chute, **stop the engine, remove the key, and wait for all moving parts to stop.** Also, pull the wire(s) off of the spark plug(s) and keep it away from the plug(s) to prevent someone from accidentally starting the engine.
- Use a stick, **not your hands** to remove obstructions from the discharge chute.
- **Before** leaving the operator's position, stop the engine, remove the key, and wait for all moving parts to stop.
- Do not wear loose fitting clothing that could possibly get caught in moving parts.
- If a shield, safety device, or decal is damaged, illegible, or lost, repair or replace it before beginning operation. Also, tighten any loose fasteners.
- **Do not** use the snowthrower on a roof.
- Perform only those maintenance instructions described in this manual. Before performing any maintenance, service, or adjustment, stop the engine, remove the key and pull the wire(s) from the spark plug(s), keeping it away from the plug(s) to prevent someone from accidentally starting the engine. If major repairs are ever needed, contact your Authorized New Holland Service Dealer.
- To ensure the best performance and safety, purchase only genuine New Holland replacement parts and accessories to keep the New Holland all New Holland. **Do not use "Will Fit" replacement parts and accessories as they could cause a safety hazard.**

Safety and Instruction Decals

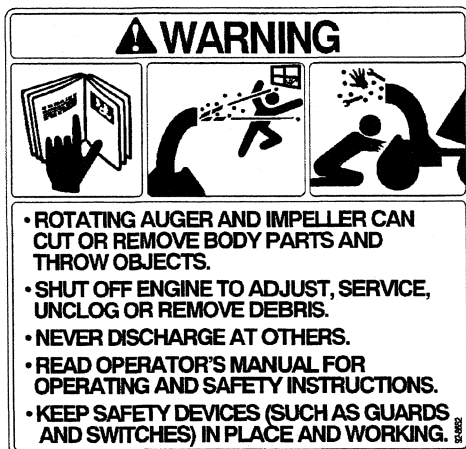


Safety decals and instructions are easily visible to the operator and are located near any area of potential danger. Replace any decal that is damaged or lost.

On upper discharge chute
(Part No. TR94D8078)



On top of housing
(Part No. TR92D8652)



On top of housing
(Part No. TR63D2380)



Installation

Loose Parts

Note: Rear wheel weights and chains, which must be purchased separately, are required to operate the tractor equipped with this snowthrower. Use the chart below to identify parts used for assembly.

DESCRIPTION	QTY.	USE
Carriage bolt 5/16-18 x 3/4" (19 mm)	3	Assemble discharge chute
Washer 5/16" (8 mm)	3	
Locknut 5/16"	3	
Deflector shield	1	
Discharge chute assembly	1	
Lift tube	1	Assemble frame and pulley
Lift rod	1	
Spacer washer 3/4" (19 mm)	2	
Clevis clip	1	
Clevis pin 1/2" x 2 5/8" (67 mm)	1	

Thank you so much for reading.
Please click the “Buy Now!”
button below to download the
complete manual.



After you pay.

You can download the most
perfect and complete manual in
the world immediately.

Our support email:

ebooklibonline@outlook.com