

NEW HOLLAND

TJ 275

TJ 325

TJ 375

TJ 425

TJ 450

TJ 500

P.I.N. RVS001801 and after

87033610

8/03

OPERATOR'S MANUAL



NEW HOLLAND

TABLE OF CONTENTS

1-TO THE OWNER	1
PRODUCT IDENTIFICATION AND SERIAL NUMBERS	3
CHEMICAL TANK MOUNTING	7
BUSINESS BAND RADIOS	8
2-SAFETY/DECALS	11
PERSONAL SAFETY ALERT	11
SAFETY	12
SAFETY DECALS	15
ROLL OVER PROTECTIVE STRUCTURE (ROPS)	21
SEAT BELTS	23
TRACTOR WARNING LAMPS AND SMV SYMBOL	24
IMPLEMENT WARNING LAMPS AND SMV SYMBOL	25
SAFETY CHAIN	25
3-OPERATING CONTROLS	27
TRACTOR ACCESS	27
OPERATORS SEAT WITH AIR SUSPENSION OR, OPTIONAL AUTOCOMFORT% SEAT (IF EQUIPPED)	29
STEERING COLUMN CONTROLS	32
STEERING COLUMN ADJUSTMENT	33
FOOT PEDALS	34
CENTER CONSOLE CONTROLS	35
RH ARMREST CONTROL CONSOLE	37
REMOTE VALVE FUNCTION CONTROL	40
ARM REST CONTROL CONSOLE ADJUSTMENT (IF EQUIPPED)	46
UPPER CONSOLE CONTROLS	46
STANDARD HVAC CONTROL SYSTEM	50
AUTOMATIC CLIMATE CONTROL OPERATION (IF EQUIPPED)	51
AUTOMATIC CLIMATE CONTROL OPERATION	53
DEFOG CONTROL OPERATION	53
TROUBLESHOOTING THE HVAC CONTROL SYSTEM	53
4-INSTRUMENTATION	59
ROPS POST INSTRUMENT CLUSTER	59
PROGRAMMING THE DISPLAY MONITOR	62
INSTRUMENT PANEL BACKLIGHT INTENSITY	63
CHANGING THE REMOTE VALVE EXTEND/RETRACT VALUES (IF EQUIPPED)	63
CHANGING TIRE RADIUS	64
RADAR SENSOR CALIBRATION	64
RADAR CALIBRATION PROCEDURE	64
TIRE AVERAGE ROLLING RADIUS CHART	66
DYNAMIC ROLLING RADIUS	66
CRITICAL WARNING DISPLAYS	67
NON-CRITICAL WARNING DISPLAYS	67
DIAGNOSTIC WARNING DISPLAYS	69
INFORMATION WARNING DISPLAYS	70
5-OPERATING INSTRUCTIONS	81
BEFORE STARTING THE ENGINE	81
RUN-IN PROCEDURE	81
ENGINE OVERSPEED	82
SEAT BELT	82
NORMAL ENGINE STARTING PROCEDURE	83
STOPPING THE ENGINE	85
COLD TEMPERATURE OPERATION	86
TOWING THE TRACTOR	90

TRANSPORTING THE TRACTOR	91
POWERSHIFT TRANSMISSION OPERATION	92
24-SPEED TRANSMISSION OPERATION (IF EQUIPPED)	96
DIFFERENTIAL LOCK	98
CONSTANT ENGINE SPEED OPERATION (IF EQUIPPED)	99
6-FIELD OPERATION	101
OPERATING THE POWER TAKEOFF (PTO)	103
STANDARD DRAWBAR	105
THREE POINT HITCH PREPARATION	110
HITCH COUPLER - CATEGORY III OR IV-N	115
HITCH OPERATION	119
REMOTE HYDRAULICS	127
AUXILIARY IMPLEMENT POWER CONNECTIONS	138
7-IN FIELD PERFORMANCE	141
TRACTOR BALLAST	141
FRONT AND REAR SUITCASE WEIGHTS	147
FRONT SUITCASE WEIGHT, TIE BOLT AND CLAMP INSTALLATION	148
WHEEL WEIGHTS	150
WHEEL WEIGHT BOLT TORQUE	150
TIRE AND RIM SERVICE	151
TIRE PRESSURE FOR MAXIMUM TIRE LOAD AT RATED INFLATION	154
WHEEL BOLT TORQUES	158
WHEEL OFFSET DIRECTION CHANGE	158
SCRAPER OPERATING PROCEDURES	169
8-LUBRICATION/FILTERS/FLUIDS/MAINTENANCE	171
LUBRICATION AND MAINTENANCE	171
PLASTIC AND RESIN PARTS	171
LUBRICANTS AND CAPACITIES	171
ENGINE LUBRICATION	172
GRILLE AND HOOD ACCESS	175
ACCESS TO BATTERIES AND HYDRAULIC FILTER	177
LUBRICATION AND MAINTENANCE CHART	178
AIR INDUCTION SYSTEM	201
9-ELECTRICAL SYSTEM	221
SPECIFICATIONS	221
GENERAL SERVICE INFORMATION	229
DIESEL ENGINE	231
10-SPECIFICATIONS	231
TRACTOR WEIGHTS	234
APPROXIMATE TRAVEL SPEEDS (MPH)	235
APPROXIMATE TRAVEL SPEEDS (KPH)	236
APPROXIMATE OVERALL MEASUREMENTS	242
DETAIL INDEX	243
DELIVERY REPORT	249
FIRST 50-HOUR SERVICE	253

GENERAL INFORMATION

INTRODUCTION TO THIS MANUAL

This manual contains important information about the safe operation, adjustment and routine maintenance of your New Holland TJ Series Tractors. The manual is divided into ten sections as outlined in the General Table of Contents Page(s). Refer to the Detail Index at the end of this manual for locating specific items about your tractor.

Use this manual as a guide. Your tractor will remain a reliable working machine as long as it is kept in good working condition and serviced properly.

Read this manual before you start the engine or operate this tractor. If any information in this manual is not understood, or if you need more information or assistance, contact your dealer.

All persons training to operate, or who will be operating this tractor, should be old enough to possess a valid local vehicle operating permit (or other applicable local age requirement) and must have demonstrated the ability to operate and service the tractor correctly and safely.

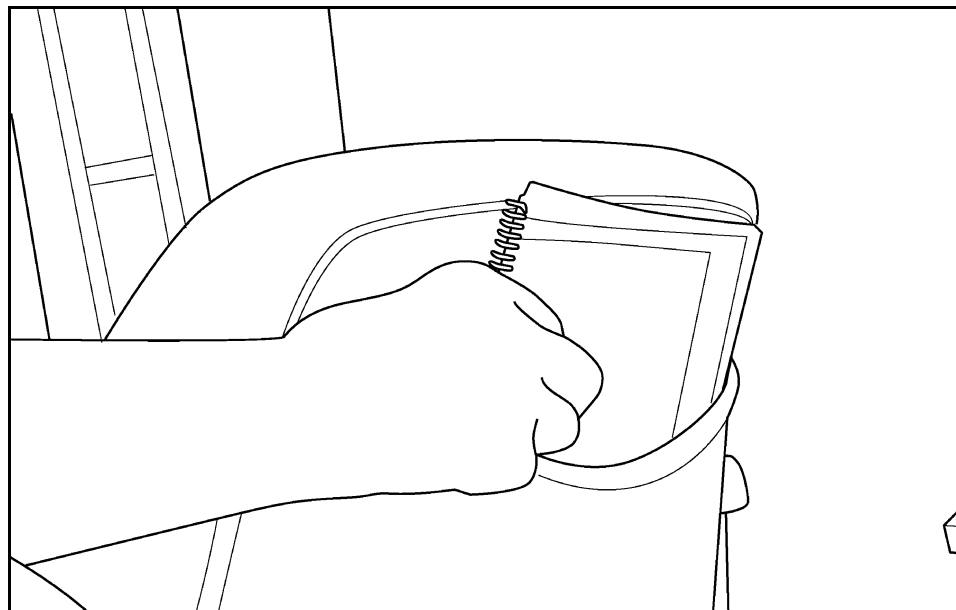
If your tractor requires replacement parts, do not use unauthorized parts or substitute materials. New Holland dealers stock approved service parts and have technicians with special training that know the best methods of repair and maintenance for your tractor.

STATEMENT OF TRACTOR INTENDED USE

The New Holland TJ Series Tractor, with standard equipment and authorized attachments, is intended to be used for customary farming, land leveling and related agriculture operations.

Installation of utility (dozer) blades, front loaders or push bars on the tractor is not recommended. Any tractor damage resulting from the installation and/or use of such equipment is not covered by the tractor warranty. The TJ 500 Model tractors are NOT approved for three point hitch or scraper operations.

OPERATOR MANUAL STORAGE COMPARTMENT



MK99H025

DO NOT permit anyone to operate or service this tractor until you or other operators have read this manual. The Operators Manual is a part of your tractor and must be available to all operators.

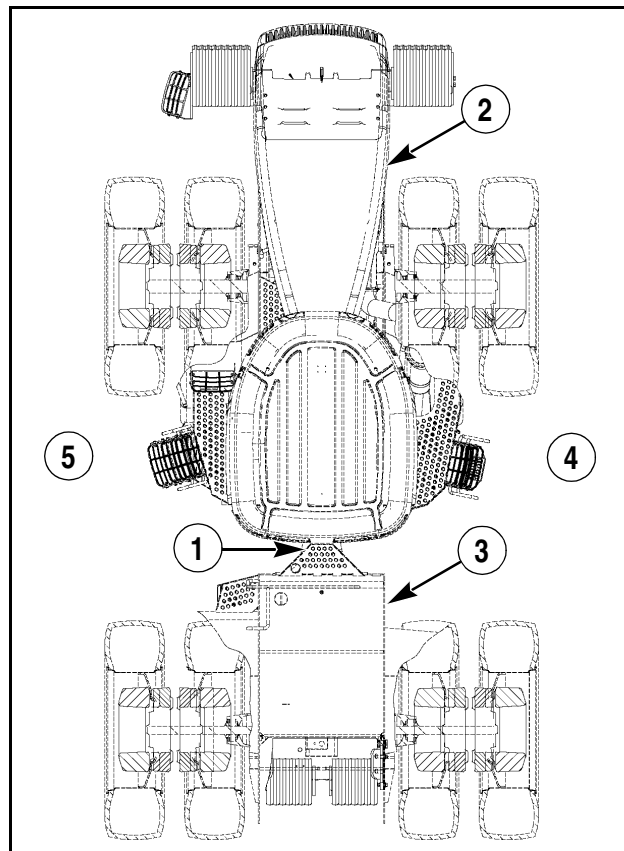
Make sure the manual is complete and in good condition. Store the Operators Manual and other important tractor information in the storage compartment provided on the rear side of the seat backrest.

TRACTOR ORIENTATION

The TJ Series New Holland Tractor is classified as a four-wheel drive articulating vehicle. The standard tractor consists of front and rear frame assemblies that steer by pivoting at the center articulation joint (1).

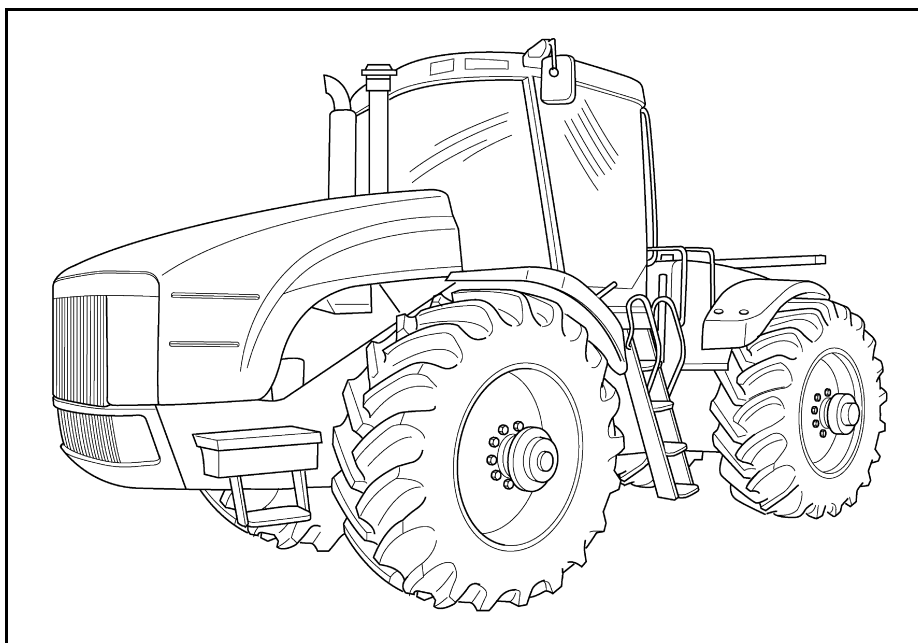
The standard tractor front frame (2) incorporates the engine, front axle, transmission and cab. The rear frame (3) incorporates the rear axle and fuel tank.

The right hand (RH) (4) and left hand (LH) (5) side of the tractor as used in this manual are the same as your right hand and left hand when sitting in the operators seat looking forward over the engine.



MA00A013

TJ SERIES NEW HOLLAND TRACTOR



MK01G135

PRODUCT IDENTIFICATION AND SERIAL NUMBERS

Write your machine Model Number, Product Identification Number (P.I.N.) and Serial Numbers of major components on the lines provided. If needed,

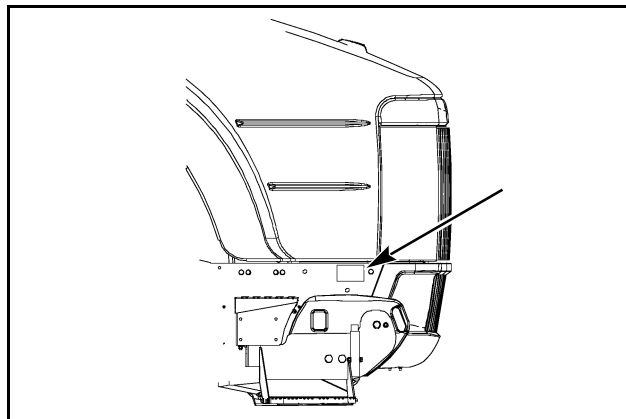
give these numbers to your dealer when you need parts or information for your machine.

TRACTOR MODEL AND PRODUCT IDENTIFICATION NUMBERS

Model _____

P.I.N. *RVS _____

Located on front end of RH side front frame..

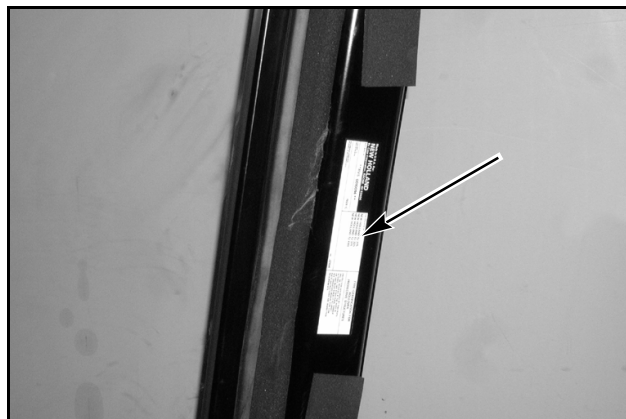


MA02H045

ROPS SERIAL NUMBER

*RVS _____

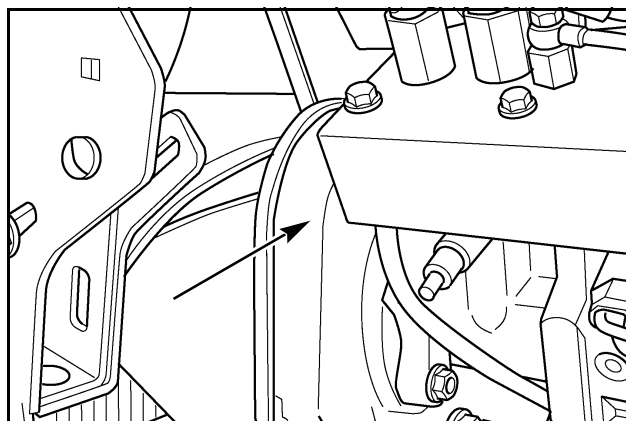
Located under the cover of the LH front ROPS post.



MK01G272

ENGINE SERIAL NUMBER (TJ 275-325)

Located on front LH side of engine.

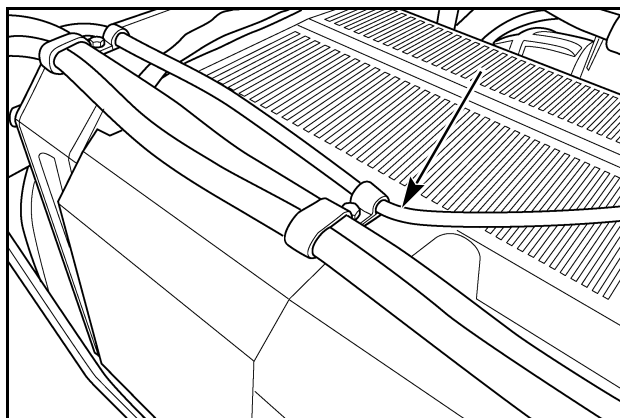


MK99K053

1-TO THE OWNER

ENGINE SERIAL NUMBER (TJ 375-500)

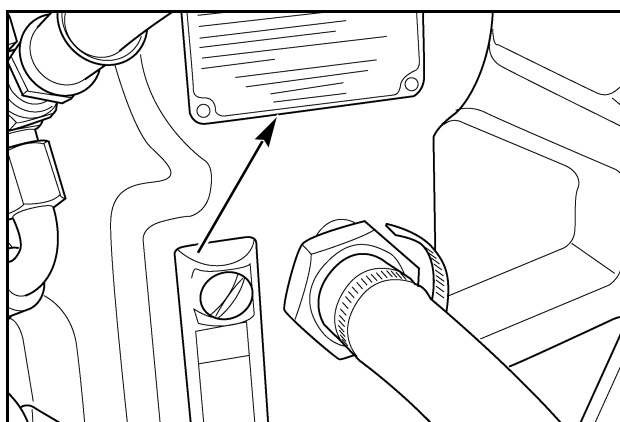
Located on the top LH side of the engine valve cover.



MK01G101

TRANSMISSION SERIAL NUMBER

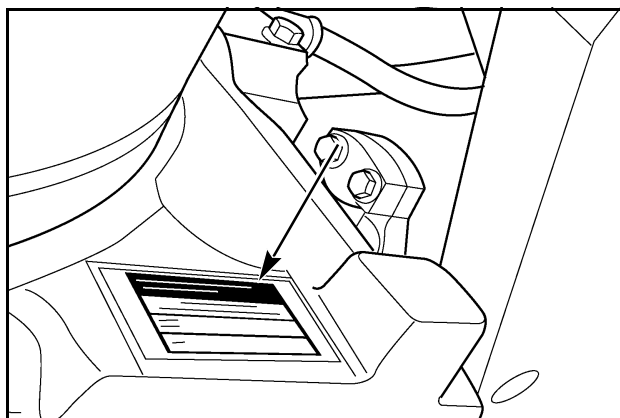
Located on the LH rear side of the transmission.



MK98C005

AXLE SERIAL NUMBER (TJ 275 - 325 - 375 Std)

Located on the side of the axle center housing.

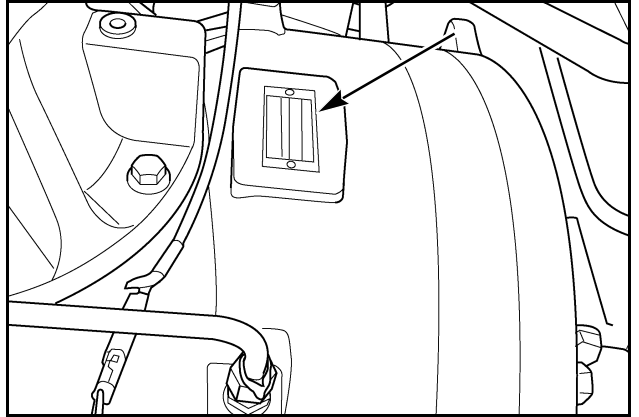


MK99K097

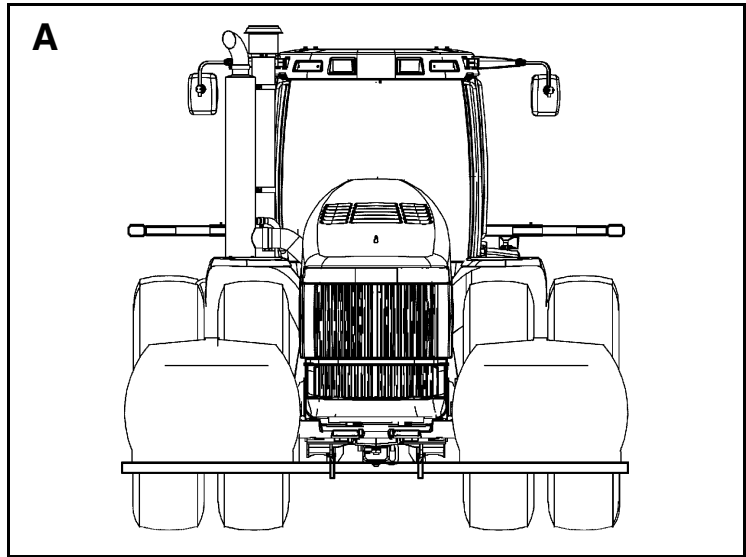
1-TO THE OWNER

AXLE SERIAL NUMBER - (TJ 375HD, 425, 450,
500)

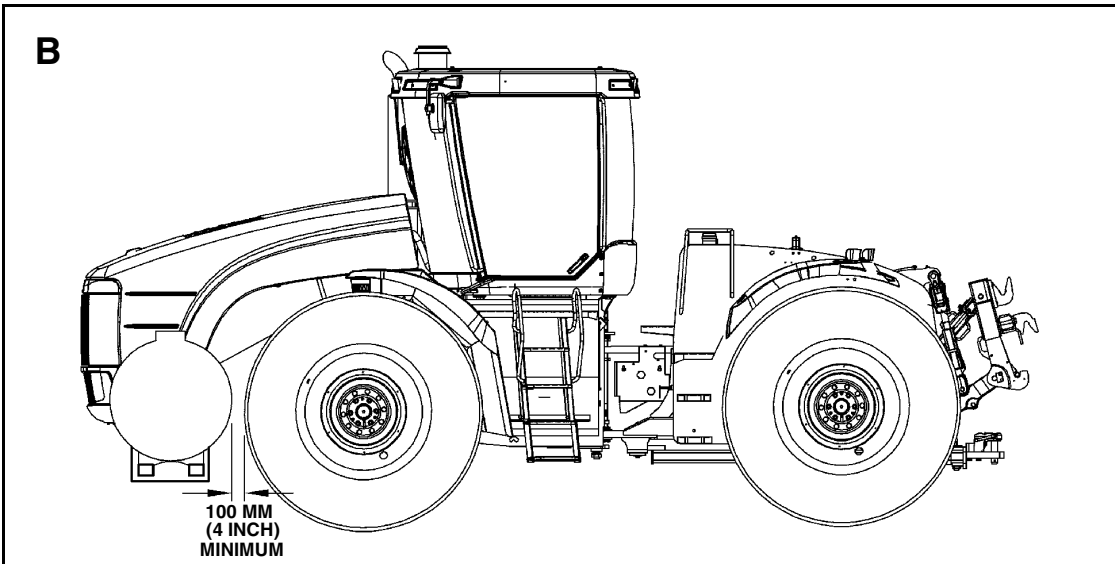
Located on the final drive housing.



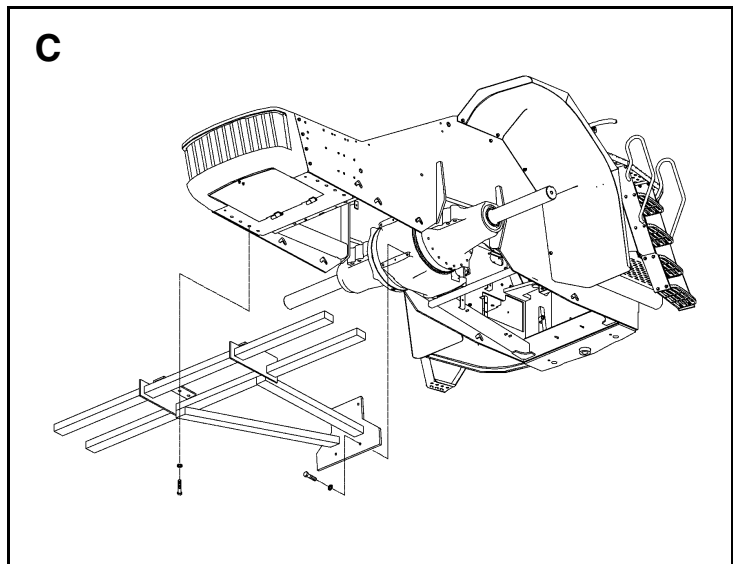
MK01G070



MA01G029



MA00G028



MA01G030

CHEMICAL TANK MOUNTING



WARNING: *Additional care must be taken when operating a tractor with chemical tanks. Operating, handling and braking performance of the tractor may be affected. Avoid high speed operation. Travel speed should be such that complete control and machine stability is maintained at all times.**

M418

Chemical tanks and mounting are not factory supplied. Chemical tanks can be mounted on each front side of the TJ model tractors. The maximum tank capacity for side mounted installation is two 300 gallon (1136 liter) tanks for TJ 275, 325 models and two 350 gallon (1326 liter) tanks for TJ 375, 425, 450 and 500 models.

To avoid structural damage, vendor supplied chemical tanks must be installed according to the following instructions:

1. Side mounted chemical tanks must be mounted in pairs with a rigid structure supporting both tanks (A). Side tanks must be interconnected so that the fluid level is the same in both tanks at all times.
2. Chemical tanks must be mounted as close to the front axle as possible. Front wheel tread setting is not affected by side tank installation, however the shape and/or size of the tanks can be affected by the required 100 mm (4 inch) minimum clearance in front of the tires (B).
3. The tank support structure must be attached to the front frame belly pan in the same location as the front suitcase weight support frame using class 10.9 fasteners (C).

IMPORTANT: *The tanks MUST NOT be individually supported by the tractor side frames.*

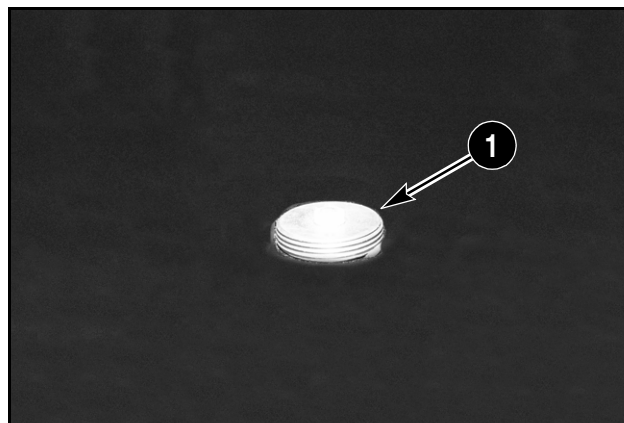
4. To reduce the dynamic forces associated with chemical tanks, the tank support structure must also have a rigid type brace extending from each side of the tank support structure to the front side of the front axle center housing. Use the existing pre-drilled and tapped 20 mm holes in the center housing to attach the braces using class 10.9 fasteners (C).
5. Front tanks must be mounted to allow the clean-out trap door to open and allow unrestricted access to all service points.
6. Refer to the Tire Load And Inflation Tables in this manual for the correct tire size and load capacity for your application. Tires must be inflated to the correct load capacity to support the added weight. To avoid exceeding tire load capacity, remove all front wheel weights.
7. Each U.S. gallon (3.8 liter) of tank capacity will add approximately 14 lb (6.3 Kg) to the front axle weight and decrease rear axle weight. DO NOT exceed tire or tractor maximum operating weights.

IMPORTANT: *Tanks filled to capacity must not be used as primary ballast for heavy tillage operation.*

NOTE: *A generic chemical tank support structure is illustrated only to show acceptable attaching points. Final support structure design and testing is the responsibility of the manufacturer.*

BUSINESS BAND RADIOS

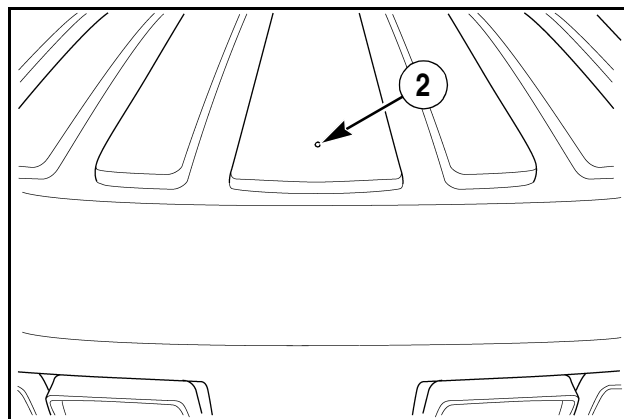
Provisions for installing business band radios have been provided for tractors equipped with the Deluxe cab. The antenna mast mounting threaded spud (1) and antenna lead wire are factory installed in the roof of the cab approximately 2 inches (50 mm) under the cab roof.



MK00E040

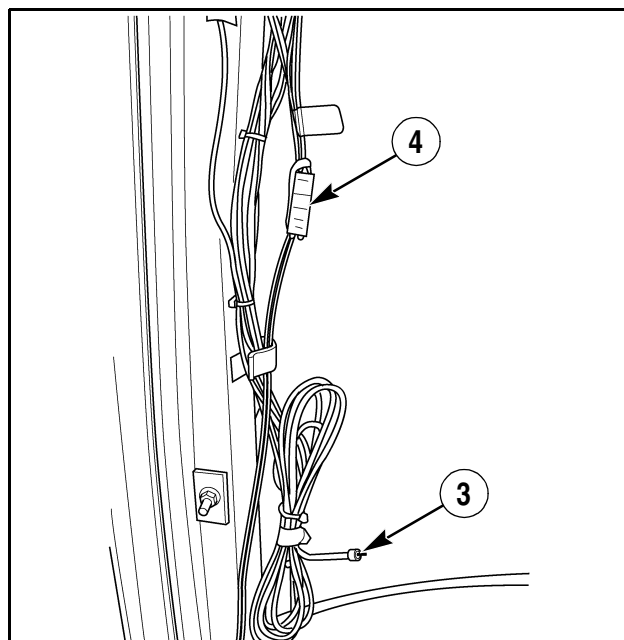
A locating dimple (2) in the cab roof marks the location for drilling the hole for the antenna mast.

NOTE: The antenna mast for a one-quarter (1/4) wave UHF business band radio must be purchased locally.



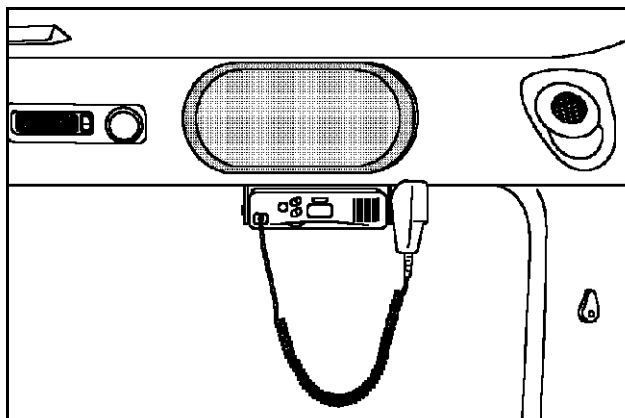
MK00E007

The radio antenna lead wire (3) and power and ground connector (4) are located under the right side rear ROPS post trim cover.



MK00E041

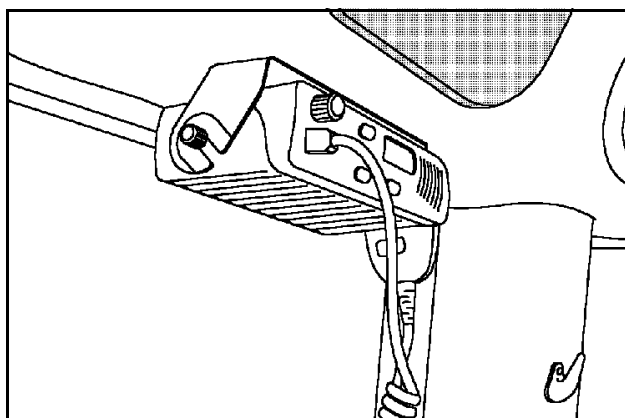
The recommended location for mounting the business band radio is under the RH stereo speaker box. The mounting bracket supplied with the radio must be used.



RI01009

If necessary, the stereo speaker may be removed to install the radio mounting bracket.

NOTE: See your dealer for additional information and procedures for installing a business band radio.



RI01D008

This Page Left Blank

Thank you so much for reading.
Please click the “Buy Now!”
button below to download the
complete manual.



After you pay.

You can download the most
perfect and complete manual in
the world immediately.

Our support email:

ebooklibonline@outlook.com