

Magnum 255 Tractor After P.I.N. Z7RZ05000

Operator's Manual

87482608
First Printing
August, 2007

CASE IH
AGRICULTURE

PERSONAL SAFETY



THIS SAFETY ALERT SYMBOL INDICATES IMPORTANT SAFETY MESSAGES IN THIS MANUAL. WHEN YOU SEE THIS SYMBOL, CAREFULLY READ THE MESSAGE THAT FOLLOWS AND BE ALERT TO THE POSSIBILITY OF DEATH OR SERIOUS INJURY. M171C




Throughout this manual and on the machine's safety decals, you will find precautionary statements: **DANGER, WARNING or CAUTION** followed by specific instructions or ISO two panel safety pictorial symbols. These precautions are intended for your personal safety.

Failure to follow the **DANGER, WARNING or CAUTION** instructions may result in death or serious bodily injury.

DANGER, WARNING or CAUTION are defined as follows:

- **DANGER:** Indicates an immediate hazardous situation that, if not avoided, will result in death or serious injury. The color associated with Danger is RED.
- **WARNING:** Indicates a potentially hazardous situation that, if not avoided, could result in death or serious injury. The color associated with Warning is ORANGE.
- **CAUTION:** Indicates a potentially hazardous situation that, if not avoided, may result in minor or moderate injury. It may also be used to alert against unsafe practices. The color associated with Caution is YELLOW.

ISO two panel **pictorial symbol decals** are defined as follows:

- The first panel indicates the nature of the hazard.
- The second panel indicates the appropriate avoidance of the hazard.
- Background color is YELLOW.
- Prohibition symbols such as   and  if used, are RED.



WARNING

IMPROPER OPERATION OF THIS MACHINE CAN CAUSE DEATH OR SERIOUS INJURY. BEFORE USING THIS MACHINE, MAKE CERTAIN THAT EVERY OPERATOR:

- Is instructed in safe and proper use of the machine.
- Reads and understands the Manual(s) pertaining to the machine.
- Reads and understands ALL Safety Decals on the machine.
- Clears the area of other persons.
- Learns and practices safe use of machine controls in a safe, clear area before operating this machine on a job site.

It is your responsibility to observe pertinent laws and regulations and follow CNH America LLC instructions on machine operation and maintenance.

CNH America LLC Technical Manuals

Manuals are available from your Dealer for the operation, service and repair of your machine. For prompt convenient service, contact your Dealer for assistance in obtaining the manuals for your machine.

Your Dealer can expedite your order for Operators Manuals, Parts Catalogs, Repair Manuals and maintenance records.

Always give the Machine Name, Model and P.I.N. (Product Identification Number) or S.N. (Serial Number) of your machine so your Dealer can provide the correct manuals for your machine.

The company is continually striving to improve its products and therefore reserves the right to make improvements and changes when it becomes practical and possible to do so, without incurring any obligation to make changes or additions to the equipment sold previously.

All data given in this manual is subject to production variations. **IMPORTANT: OPERATING AND SERVICE MESSAGES DISPLAYED ON THE ELECTRONIC OPERATING PANEL MAY VARY FROM WHAT IS SHOWN IN THE OPERATOR'S MANUAL. SHOULD THIS OCCUR ADHERE TO THE LATEST INSTRUCTION ON THE ELECTRONIC OPERATING PANEL.**

Dimensions and weights are approximate only and the illustrations do not necessarily show the machine in standard condition. For exact information about any particular machine, please consult your dealer.

GENERAL TABLE OF CONTENTS

1 – TO THE OWNER	1
STATEMENT OF TRACTOR INTENDED USE	1
OPERATOR'S MANUAL STORAGE COMPARTMENT	1
TRANSPORT TOWED EQUIPMENT AT SAFE SPEEDS	2
PRODUCT IDENTIFICATION AND SERIAL NUMBERS	4
MACHINE COMPONENTS	7
BUSINESS BAND RADIOS	9
FRAME REINFORCEMENT KITS	10
2 – SAFETY/DECALS	11
SAFETY RULES	11
PERSONAL SAFETY	14
INSTRUCTIONAL SEAT SAFETY	14
MAINTENANCE SAFETY	15
FIRE SAFETY	15
BATTERY SAFETY	15
MACHINE OPERATION AND ROLL-OVER SAFETY	16
HAZARDOUS CHEMICALS	16
SAFETY DECALS	17
ROLLOVER PROTECTIVE STRUCTURE (ROPS)	23
CAB STRUCTURAL FRAME (CSF)	23
CLEANING CAB WINDOWS	24
INTERIOR REAR VIEW MIRROR	24
SEAT BELTS	25
TRACTOR WARNING LAMPS AND SLOW MOVING VEHICLE (SMV) SYMBOL	26
IMPLEMENT WARNING LAMPS AND SMV SYMBOL	29
SAFETY CHAIN	30
3 – OPERATING CONTROLS	31
TRACTOR ACCESS	31
OPERATOR SEAT AND CONTROLS	32
INSTRUCTIONAL SEAT (IF EQUIPPED)	35
STEERING COLUMN CONTROLS	36
CENTER CONSOLE CONTROLS	38
FOOT PEDALS	40
RIGHT HAND CONSOLE CONTROLS	41
ARMREST CONSOLE CONTROLS	48
RIGHT HAND FENDER CONTROLS	51
AUTOMATIC TEMPERATURE CONTROL SYSTEM (IF EQUIPPED)	56
AFS 200 DISPLAY	61
AFS PRO 600 DISPLAY	61
REAR WINDOW	62
DOME LAMP	62
MAP LAMP (IF EQUIPPED)	63
STORAGE COMPARTMENT	63
RADIO (IF EQUIPPED)	63
MP3 PLAYER JACK (EARLY VERSION) (IF EQUIPPED)	64
MP3 PLAYER JACK (LATER VERSION) (IF EQUIPPED)	64
SUN SHADE (IF EQUIPPED)	64
INTERIOR REAR VIEW MIRROR	65
EXTENDABLE MIRRORS (IF EQUIPPED)	65
UTILITY CONSOLE	65
REAR FENDER CONTROLS	66

4 – INSTRUMENTATION	67
INSTRUMENTATION CLUSTER OVERVIEW	67
PROGRAMMING THE INSTRUMENTATION DISPLAY	74
PROGRAMMING THE OPERATOR ADJUST MENU	80
WARNING/FAULT DISPLAYS	83
INSTRUMENTATION CLUSTER OPERATION	89
5 – OPERATING INSTRUCTIONS	108
BEFORE STARTING THE ENGINE	108
SERVICE INDICATOR LAMPS AND DISPLAYS	109
SEAT BELTS	110
NORMAL ENGINE STARTING PROCEDURE	111
STOPPING THE ENGINE	113
COLD TEMPERATURE OPERATION	114
POWER SHIFT TRANSMISSION	119
TRANSMISSION	120
SUSPENDED MFD AXLE OPERATION (IF EQUIPPED)	138
CUSHION HITCH RIDE CONTROL OPERATION (IF EQUIPPED)	145
CONSTANT ENGINE SPEED OPERATION	147
TOWING THE TRACTOR	148
HOW TO TRANSPORT THE TRACTOR	151
6 – FIELD OPERATION	152
GENERAL PROCEDURES FOR CONNECTING IMPLEMENTS	152
POWER TAKEOFF (PTO)	154
THREE POINT HITCH	169
HITCH OPERATION	190
DRAWBAR PREPARATION	208
REMOTE HYDRAULICS	215
LOADER OPERATION	232
CHEMICAL TANK MOUNTING	233
AUXILIARY POWER CONNECTIONS	235
MONITOR MOUNTING	238
GROUND SPEED SENSOR CONNECTOR	239
TRAILER BRAKE CONNECTOR (IF EQUIPPED)	240
CAB STEPS	242
7 – IN-FIELD PERFORMANCE	243
DIFFERENTIAL LOCK	243
MFD OPERATION	246
BALLASTING YOUR TRACTOR FOR OPTIMUM PERFORMANCE	251
WHEEL SLIP	275
POWER HOP	277
MECHANICAL FRONT DRIVE (MFD) AXLES	278
MFD STEERING AND OSCILLATION STOPS	285
FRONT WHEEL FENDERS (IF EQUIPPED)	293
REAR AXLE	297
TRACTOR JACKING POINTS	300
REAR WHEEL TREAD SETTING - SINGLES	302
REAR WHEEL TREAD SETTING - DUALS	304
REAR WHEEL TREAD SETTING - TRIPLES	313

8 – LUBRICATION/FILTERS/FLUIDS/MAINTENANCE	316
ENVIRONMENT	316
PLASTIC AND RESIN PARTS	316
TOOL BOX (IF EQUIPPED)	316
SYSTEM CAPACITIES	317
OPENING THE HOOD	321
LUBRICATION/MAINTENANCE CHART	323
9 – ELECTRICAL SYSTEM	375
SPECIFICATIONS	375
RADIO REGIONAL PROGRAMMING	380
BATTERY SYSTEM SERVICING	381
BULB AND LAMP REPLACEMENT	384
10 – SPECIFICATIONS	400
DIESEL ENGINE	400
POWER TRAIN	401
TRAVEL SPEEDS	404
MAXIMUM RECOMMENDED OPERATING WEIGHTS	408
INDEX	411

TO THE OWNER

This manual contains important information about the safe operation, adjustment and routine maintenance of your Case IH Magnum Series Tractor. The manual is divided into ten sections as outlined in the General Table of Contents Page(s). Refer to the Detail Index at the end of this manual for locating specific items about your tractor.

DO NOT operate or permit anyone to operate or service this machine until you or the other persons have read this manual. Use only trained operators who have demonstrated the ability to operate and service this machine correctly and safely.

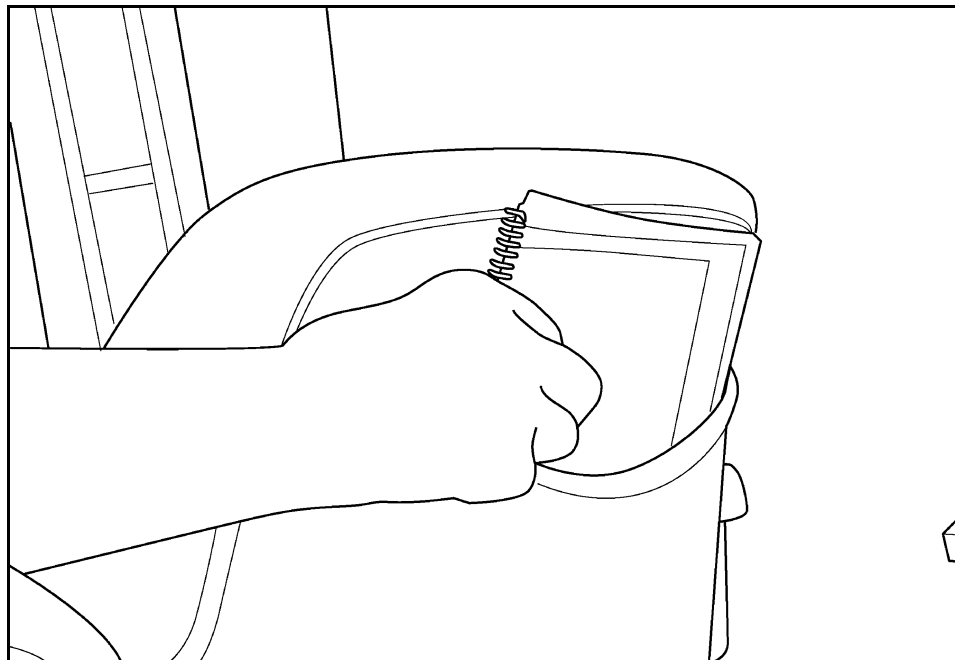
This Operator's Manual should be stored in the manual compartment on this machine. Make sure this manual is in good condition. Contact your Case IH dealer to obtain additional manuals. Contact your dealer for any further information or assistance about your machine. Your dealer has Case IH approved service parts. Your dealer has technicians with special training that know the best methods of repair and maintenance for your tractor.

STATEMENT OF TRACTOR INTENDED USE

The Case IH Magnum Series Tractor, with standard equipment and authorized attachments, is intended to be used for customary farming, land leveling and related agriculture operations. Installation of utility (dozer) blades, tile plows, or push bars on the tractor is not recommended. Any tractor damage resulting from the installation and/or use of such equipment is not covered by the tractor warranty.

Consult an authorized dealer or Case IH on changes, additions or modifications that may be required for this machine to comply with various regulations and safety requirements. Unauthorized modifications will cause serious injury or death. Anyone making such unauthorized modifications is responsible for the consequences.

OPERATOR'S MANUAL STORAGE COMPARTMENT



MK99H025

Keep the Operator's Manual in the storage compartment provided on your tractor. The Operator's Manual must be available for use by all operators.

NOTE: *The right hand and left hand side of the tractor used in this manual are the same as your right hand and left hand when sitting in the tractor seat looking forward.*

TRANSPORT TOWED EQUIPMENT AT SAFE SPEEDS

Your tractor is capable of operating at speeds that exceed the maximum allowable transport speed for most towed equipment.

Before transporting towed equipment, read the operator manual for the equipment. Ensure that equipment is correctly installed, know how to transport it safely,

Never transport at speeds that exceed the equipment's maximum transport speed. Exceeding the equipment's maximum transport speed may result in reduced braking performance and/or loss of control of the tractor and its towed equipment.

Unless otherwise specified by the equipment manufacturer or legislation, observe the following when towing.

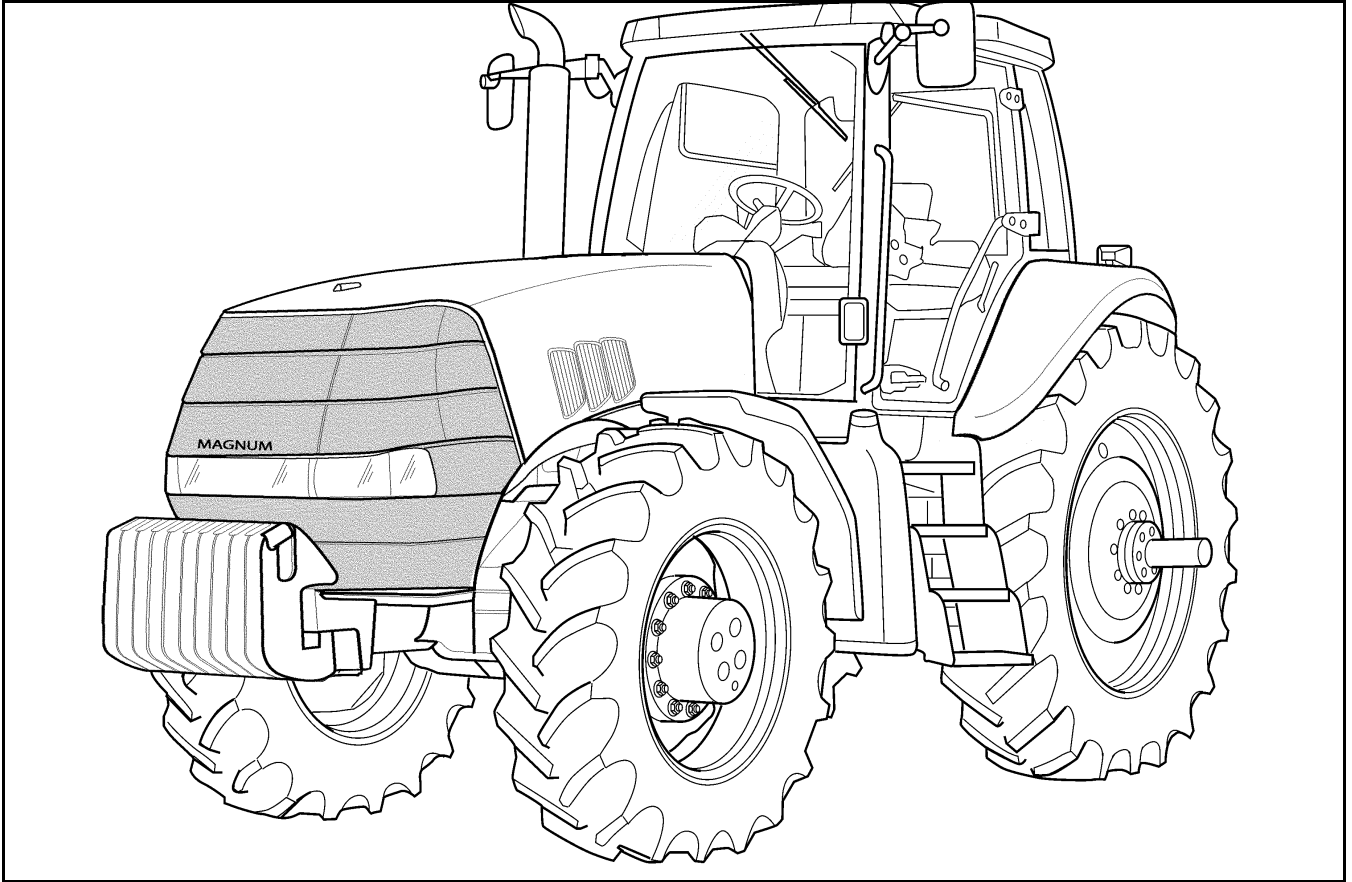
For towed equipment without brakes. Do not tow equipment that does not have brakes

- At speeds over 32 km/h (20 mile/h); or
- That, when fully loaded, has a mass (weight) over 1.5 metric tonnes (3300 lb.) and more than 1.5 times the mass (weight) of the tractor
- When trailer brakes are required by law
- That has a mass (weight) that exceeds the values declared on the tractor PIN plate (as applicable)

For towed equipment with brakes. Do not tow equipment that has brakes

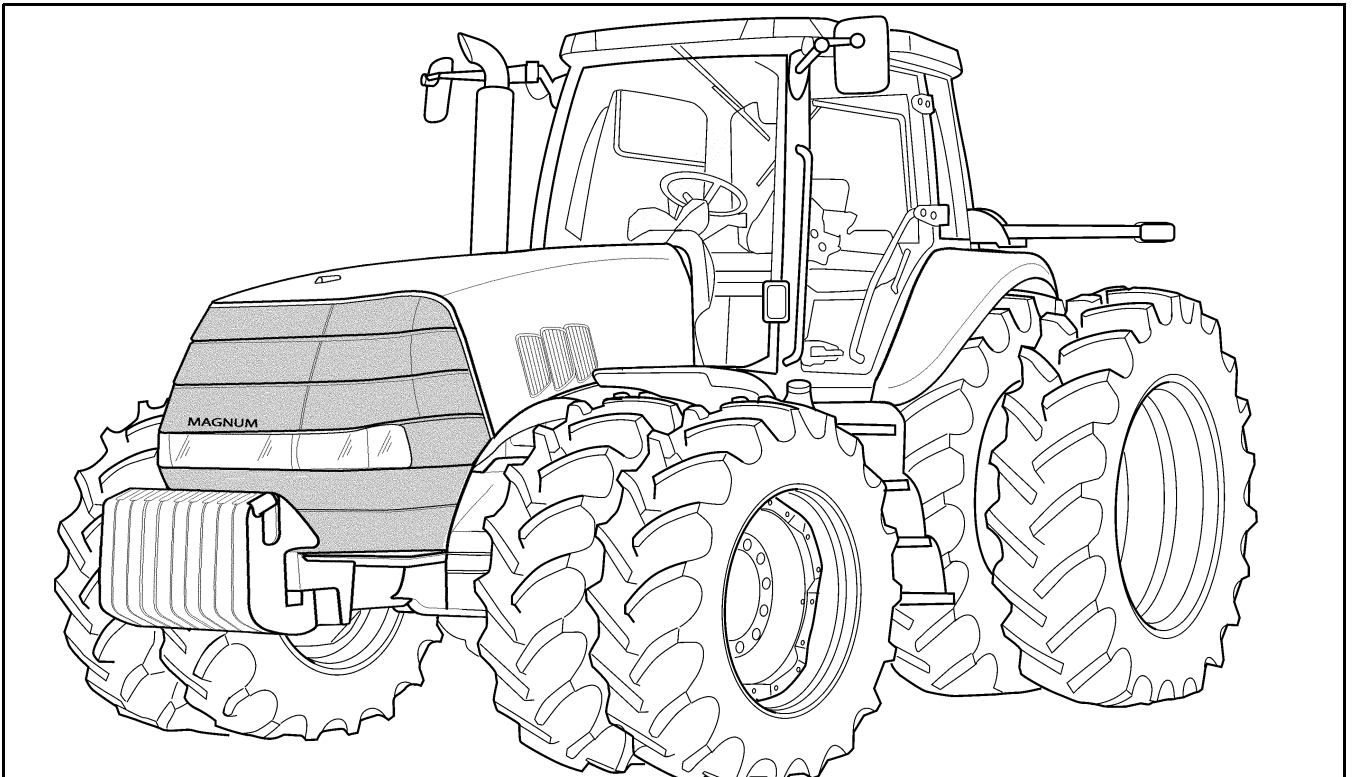
- At speeds over 40 km/h (25 mile/h); or
- That, when fully loaded has a mass (weight) more than 2.5 times the mass (weight) of the tractor
- That has a mass (weight) that exceeds the values declared on the tractor PIN plate (as applicable)

MAGNUM SERIES TRACTOR



Magnum Tractor

RH02H168



Magnum Tractor with Front and Rear Duals

RH02H170

PRODUCT IDENTIFICATION AND SERIAL NUMBERS

Write your tractor Model Number, Product Identification Number (P.I.N.) and Serial Numbers of major components on the lines provided.

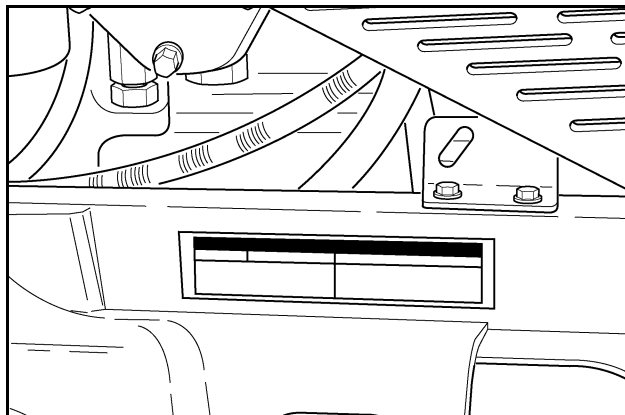
If needed, give these numbers to your Case IH dealer when you need parts or information for your machine.

TRACTOR MODEL AND PRODUCT IDENTIFICATION NUMBER

Model: _____

P.I.N. *: _____

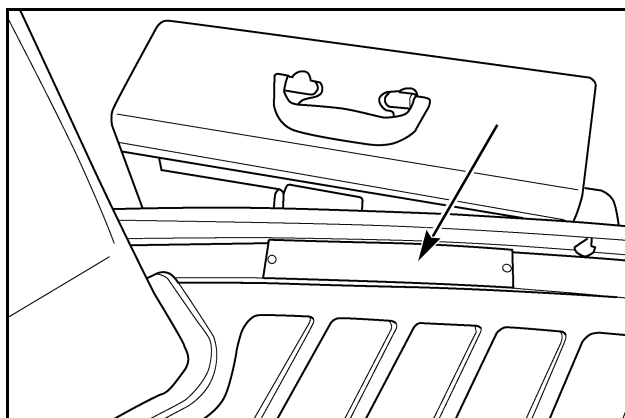
Located on right hand front frame casting.



RH02H283

ROLL OVER PROTECTION SYSTEM (ROPS) SERIAL NUMBER

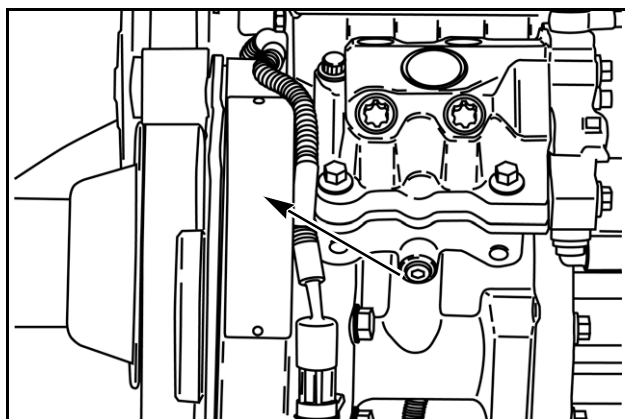
Located on the right hand cab floor.



RH02H174

ENGINE SERIAL NUMBER

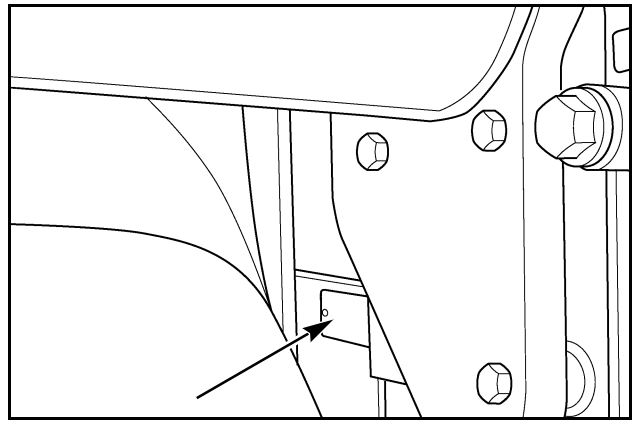
Located on front left hand side of engine.



RD05J163

TRANSMISSION SERIAL NUMBER

Located on the right hand side of the transmission behind the fuel tank and to the left of the ground stud.

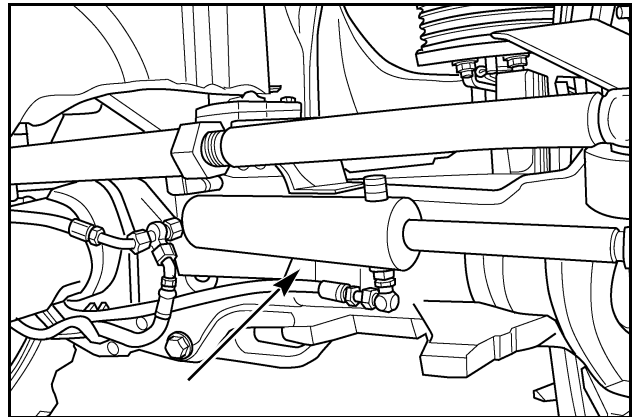


RH02H176

AXLE SERIAL NUMBER

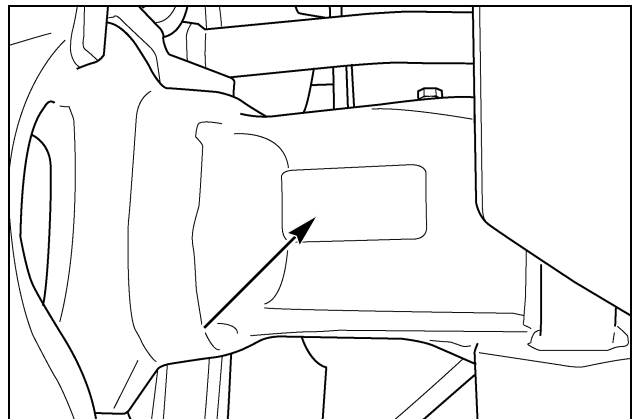
MFD AXLE: Located on the rear right hand side of the axle housing.

SUSPENDED AXLE: Located on the front right hand side of the axle housing.



RH02H178

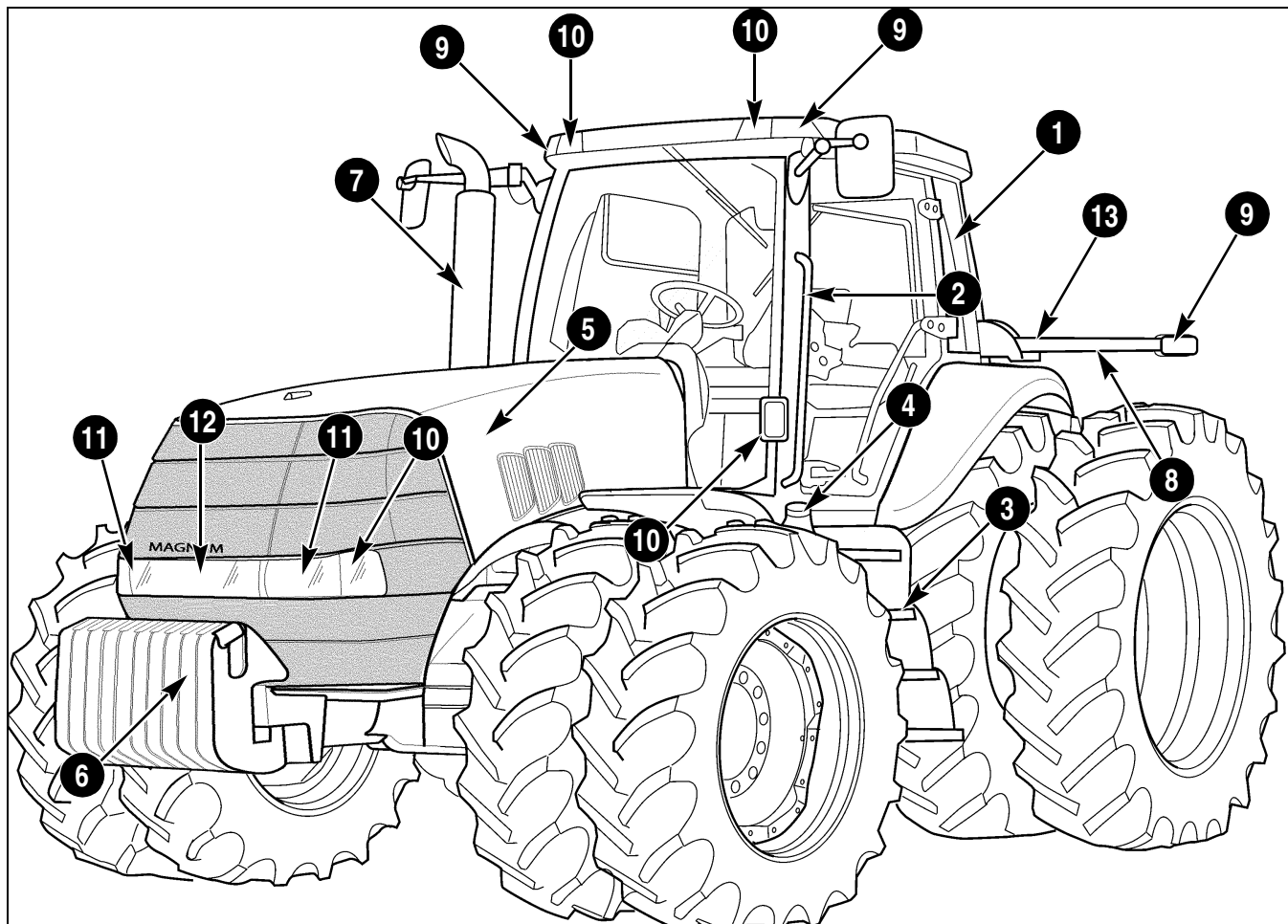
MFD Axle



RH02G351

Suspended Axle

MACHINE COMPONENTS



RH02H170

- | | | | |
|--------------|--------------------------|-----------------------|---------------------|
| 1. ROPS CAB | 5. HOOD | 9. AMBER WARNING LAMP | 13. AMBER REFLECTOR |
| 2. HAND RAIL | 6. FRONT WEIGHTS | 10. WORK LAMPS | |
| 3. STEPS | 7. EXHAUST STACK | 11. ROAD/WORK LAMPS | |
| 4. FUEL TANK | 8. WIDE TRANSPORT MARKER | 12. HID LAMP | |

Buy Now



Our support email:

ebooklibonline@outlook.com