

CASE

CVX 140, CVX 150, CVX 160

CVX 175, CVX 195

Tractors

Sva 87532337





IN THIS MANUAL, THIS WARNING SYMBOL INDICATES IMPORTANT SAFETY INFORMATION. WHEREVER THIS SYMBOL APPEARS, THE INFORMATION FOLLOWING IT SHOULD BE READ CAREFULLY TO ENSURE THAT THE USER IS AWARE OF THE POTENTIAL RISK OF INJURY OR DEATH. M171B

The safety labels on this machine use the terms '**Danger**', '**Warning**' or '**Caution**'. These terms are defined as follows:

- **DANGER:** This indicates an imminently hazardous situation which, if steps are not taken to avoid it, will lead to death or serious injury. The colour assigned to the term 'Danger' is RED.
- **WARNING:** This term indicates a potentially hazardous situation which, if steps are not taken to avoid it, can lead to serious injury. The colour assigned to the term 'Warning' is ORANGE.
- **CAUTION:** This term indicates a potentially hazardous situation which, if steps are not taken to avoid it, can lead to minor or moderate injuries. This term is also used to warn the user of unsafe practices. The colour assigned to the term 'Caution' is YELLOW.



SERVICE BULLETIN

IMPROPER OPERATION OF THIS MACHINE CAN LEAD TO INJURY OR DEATH. BEFORE USING THIS MACHINE, ENSURE THAT EVERY DRIVER FULFILS THE FOLLOWING REQUIREMENTS :

- The driver must be trained in the safe and correct manipulation of the machine.
- He must have read and understood the manual(s) regarding the machine.
- He must have read and understood ALL safety labels on the machine.
- He must ensure that no one is standing in the working area.
- Before using the machine in a working area, he must have practised and trained in safe manipulation of the machine's operating elements in a safe, open practice area.

It is your responsibility to comply with the applicable regulations and guidelines and to follow the instructions given by CNH Österreich GmbH on working with and maintaining the machine.

Sva 87532337 GE

© 2006 CNH Österreich GmbH

January 2007

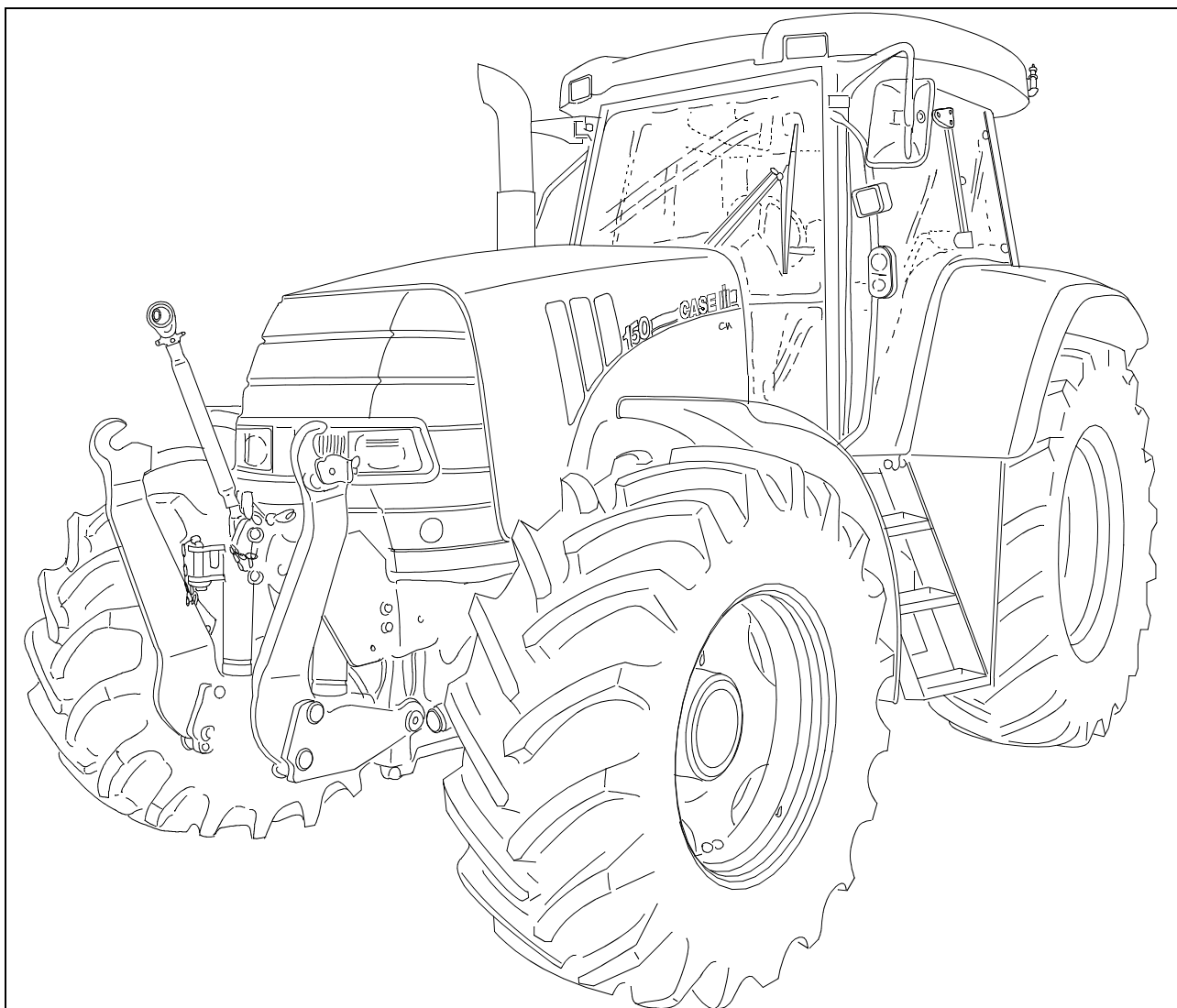
Case is a registered trademark of CNH Österreich GmbH.

TABLE OF CONTENTS

TO THE USER	1
ASSEMBLIES AND SERIAL NUMBERS	5
ASSEMBLIES AND SERIAL NUMBERS	5
SAFETY AND SAFETY PANELS	7
SAFETY AND SAFETY PANELS	7
FITTINGS/OPERATING ELEMENTS	13
FITTINGS/OPERATING ELEMENTS	13
DRIVER'S SEAT	14
CONTROL ELEMENTS	33
DRIVING OPERATION	51
BEFORE STARTING THE ENGINE	51
DRIVER PRESENCE SWITCH	51
BATTERY MASTER SWITCH (if fitted)	52
STARTING PROCESS	53
TRACTOR OPERATION AT LOW TEMPERATURES (WINTER OPERATION)	55
DRIVE STRATEGIES	57
STOPPING AND PARKING THE TRACTOR	59
STATIONARY CONTROL	60
PARK LATCH	60
DRIVING CONSIDERATIONS	61
TRANSMISSION ACTUATION	63
CAB VENTILATION / HEATING	72
HEIGHT ADJUSTABLE TOWING HITCHES (if fitted)	75
SWIVEL-MOUNTED DRAWBAR	78
AUTO PICK UP HITCH WITH HOOK hydraulically extending (if fitted)	82
LUG DIMENSIONS FOR TRAILER/IMPLEMENT DRAWBAR	86
CABLE COUPLINGS FOR TRAILER BRAKES (if fitted)	87
AUXILIARY ELECTRICAL CONNECTOR	89
WARNING LIGHTS	94
TOWING	95
TRANSPORTING THE TRACTOR	96
OPERATIONAL USE	97
OPERATING THE FRONT PTO SHAFT(if fitted)	107
PREPARING THE REAR THREE POINT LINKAGE	108
OPERATING THE ELECTRONIC EDC LIFTING EQUIPMENT CONTROL	117
PREPARING THE FRONT POWER LIFT(if fitted)	125
OPERATING THE FRONT 3 POINT HITCH	126
HEADLAND MANAGEMENT	129
AUXILIARY CONTROL VALVES	133
OPERATING THE AUXILIARY CONTROL VALVES	139
DIFFERENTIAL LOCK	144
OPERATING FOUR-WHEEL DRIVE	146
OPERATING FRONT AXLE INDEPENDENT SUSPENSION (if fitted) (if fitted)	147
MOUNTING CONSOLE FOR EXTERNAL LEVERS	148

TYRES/WHEELS/WHEELBASE/BALLAST	149
FRONT AXLE AND FRONT AXLE TRACK WIDTH ADJUSTMENT	151
SETTING THE FRONT AXLE TRACK WIDTHS	152
SETTING THE REAR AXLE TRACK WIDTHS	154
ALL-WHEEL TYRE COMBINATIONS	158
FRONT WHEEL FENDERS – ALL-WHEEL DRIVE TRACTOR (if fitted)	160
TRACTOR BALLAST	161
LUBRICATION/MAINTENANCE.....	165
ENVIRONMENTAL ISSUES	165
PLASTICS AND GLASS FIBRE REINFORCED PARTS	165
TOOL BOX	165
PROOF METER	166
BONNET	167
LUBRICANTS AND FILL VOLUMES	168
DAILY CHECKS	175
ENGINE MAINTENANCE	179
ENGINE MAINTENANCE	189
MAINTENANCE OF HYDRAULIC UNIT	192
MAINTENANCE OF STEERING UNIT	193
MAINTENANCE OF FRONT AXLE	194
BRAKE MAINTENANCE	197
MAINTENANCE OF TRAILER COUPLING	198
ELECTRICAL MAINTENANCE	199
MAINTENANCE OF FRONT PTO SHAFT	200
MAINTENANCE OF FRONT HYDRAULICS	201
GENERAL MAINTENANCE	202
ELECTRICAL SYSTEM	205
BATTERY	205
REPLACING BULBS AND LAMPS	208
FUSES and RELAYS	216
TECHNICAL DATA	221
ENGINE	221
ELECTRICAL SYSTEM	222
GENERAL MACHINE DATA	223
VEHICLE WEIGHTS	227
VEHICLE DIMENSIONS	228
REVERSING OPERATION	229
INDEX	233

CASE CVX 150 TRACTOR

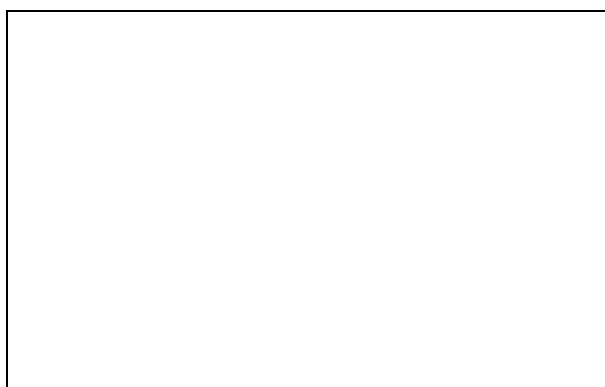


SC07A003

Manufacturer:

CNH Österreich GmbH
Steyrerstrasse 32
A-4300 St. Valentin
AUSTRIA

Dealer's stamp



How to use this manual

Read the manual before starting to use your tractor. Consult your dealer if you require any further information.

This manual contains important information about how to work safely with your Case tractor, and about how to set it up and maintain it for reliable operation. To make this information easy for you to find, this manual is subdivided into separate chapters, as shown in the table of contents. The information about this tractor is divided into four chapters:

1. INSTRUMENTS AND OPERATING ELEMENTS – This illustrates the layout of all the operating elements.
2. WORKING INSTRUCTIONS – General tips for daily work with the tractor, e.g. starting/stopping the tractor, operation of the transmission etc.
3. FIELD WORK – This chapter contains tips about various working applications, specifically involving the use of equipment, e.g. three-point linkage, rear PTO shaft etc.
4. TYRES/WHEELS/TRACK WIDTHS/BALLASTING – This section lists settings for various different tractor applications, e.g. tyre pressures, track widths etc.

Maintenance for this tractor is divided into two chapters:

1. LUBRICATION/MAINTENANCE – Regular maintenance intervals.
2. ELECTRICAL SYSTEM – General maintenance instructions for the electrical system.

IMPORTANT: *To find specific points about your vehicle in this manual, please refer to the alphabetically arranged index at the back of the manual.*

Positional indications, e.g. front, back, right and left, are as viewed by someone on the driving seat looking in the direction of travel.

Do NOT permit yourself or anyone else to drive this vehicle or carry out maintenance work on it until you or that other person has read this manual. Only employ experienced drivers who have demonstrated their ability to work with and maintain this vehicle properly and safely.

This tractor with its standard equipment and permitted auxiliary equipment is intended for use in agricultural applications etc.

This vehicle is NOT to be used for any applications or purposes other than those described in this manual. Contact an authorised dealer about any modifications, additions or conversion work which may be required to enable your vehicle to comply with your national directives and safety requirements. The consent or official approval of the manufacturer is required for any specialist add-on structural components. Product liability will be declined if any unauthorised modifications are made.

Conformity declaration

This tractor complies with EC Directive (89/336/EEC) :

- Electromagnetic compatibility and is CE-marked.

Operating permit

These tractors are covered by a general operating permit for use on public highways throughout the EU, subject to a type-dependent maximum speed limit of 40 km/h.

e1 * 2003/37 * 0278

subject to applicable conditions.

Over and above this, national approvals allow for certain versions to drive at speeds of up to 50 km/h.

Software status

ARU	Armrest	3.0.0.0
EEM	Engine controller	1.3.0.0
FMGR	Vehicle/transmission controller	3.0.0.0
SGR	Transmission controller	3.0.0.0
ECCU	Electronic central control unit	3.0.0.0
ECCU	Electronic lifting equipment control	3.0.0.0
ICU 2	Display	3.0.0.0

Airborne noise emissions

In accordance with the specifications of EU directives, the noise levels permitted for the tractors described in this operators manual are as follows.

Model	Noise levels in the driver's cab		Driving noise level Annex IV**
	Closed Annex II*	Open Annex II*	
CVX 140	74,0	80,0	83,0
	73,0***	79,0***	84,0***
CVX 150	74,0	80,0	83,0
	73,0***	79,0***	84,0***
CVX 160	74,0	80,0	83,0
	73,0***	79,0***	84,0***
CVX 175	74,0	80,0	84,0
	74,0***	79,0***	84,0***
CVX 195	74,0	80,0	84,0
	74,0***	79,0***	84,0***

* Measuring results in accordance with EU Directive 77/311/EU, Annex II.

Maximum noise level in the driver's cab with windows and doors open or closed, tractor off load.

* Measuring results in accordance with EU Directive 74/151/EU, Annex IV.

*** with ejector exhaust system

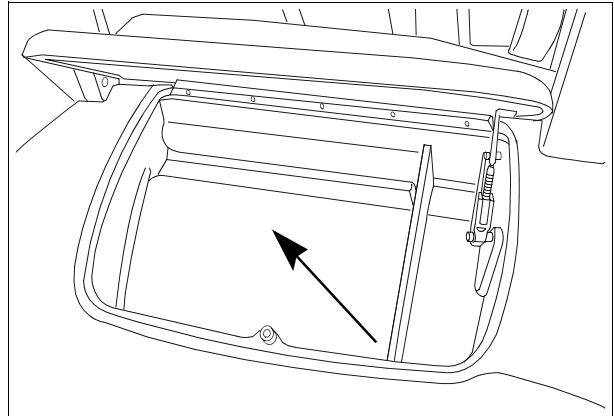
Keeping this manual safe

Store this operators manual in the glovebox provided in your tractor.

Ensure that this manual remains complete and in good condition.

Ask your dealer for additional copies of the manual, or for any other information or support you require for your vehicle. Your dealer employs highly trained technical specialists who are familiar with the best method for repairing and maintaining your vehicle.

IMPORTANT: *This operators manual is a part of your tractor. The operating instructions MUST remain with the tractor if it is sold, borrowed or hired.*





SC06K059

ASSEMBLIES AND SERIAL NUMBERS

Enter the type designation for the vehicle, the Product Identification Number (P.I.N.) and serial numbers below in their corresponding lines. When ordering components or requesting information, you may need to quote this numerical data to the CASE dealer.

Keep a written record of these identification numbers. Store these data records and the vehicle licensing documentation in a safe place. If the vehicle is ever stolen, notify the local police of these identification details.

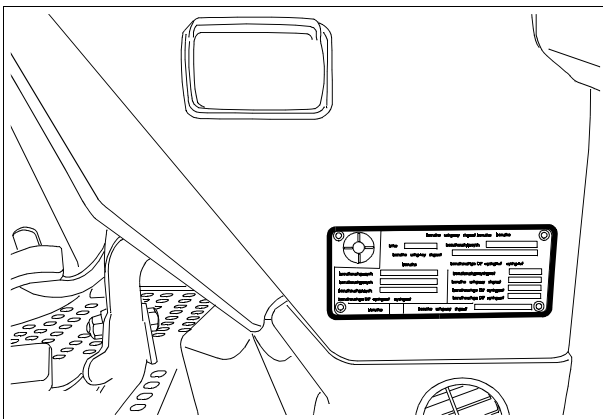
Details on the type plate

		CNH International SA		Made in AUSTRIA	
		TYP: SD	EWG-Nummer: E1-2003/37*0278		
		Identifizierungsnummer: Z7SD01001		SD.....	
<u>Zugmaschine:</u>			<u>Technisch zulässige Anhängelast:</u>		
zul. Gesamtgewicht*):	11000	bis		ungebremste Anh. last:	3000 kg
zul. Achslast vorne*):	5000	bis		Anh. last f. Unabh. Bremsg:	6000 kg
zul. Achslast hinten*):	9000	bis		auflaufgebremste Anh. last:	8000 kg
*) abhängig von der montierten Bereifung				hydr./pneumat. gebr. Anh. last:	32000 kg
		Eigengewicht (kg)		6650	

SS06M191

Arrangement of individual numbers

TRACTOR

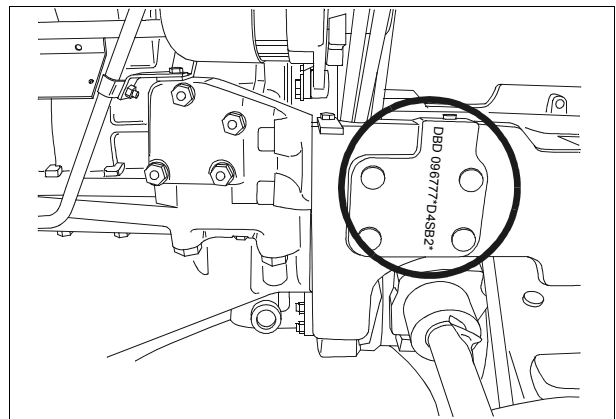


SC04A088

Type designation _____

Product Identification Number _____

TRACTOR



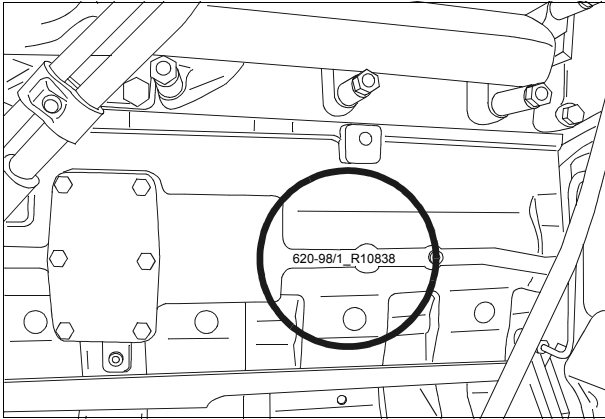
SC05M013

Type designation _____

Product Identification Number _____

ASSEMBLIES/SERIAL NUMBERS

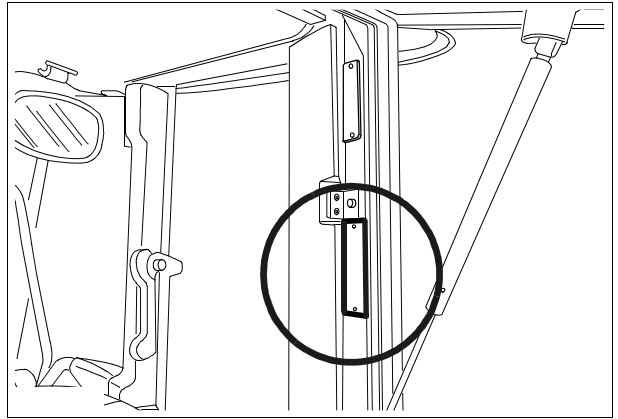
ENGINE



SC05M012

Serial no. _____

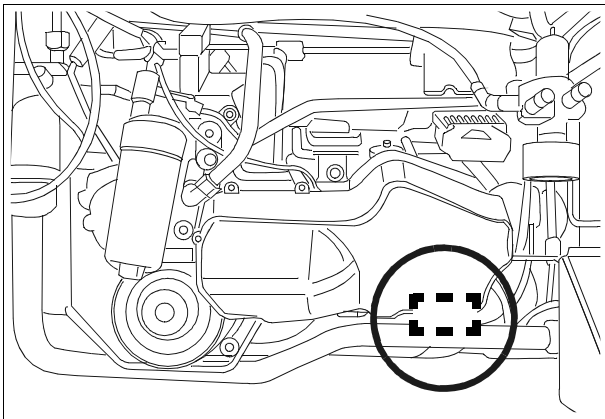
CAB



SC04A89

Serial no. _____

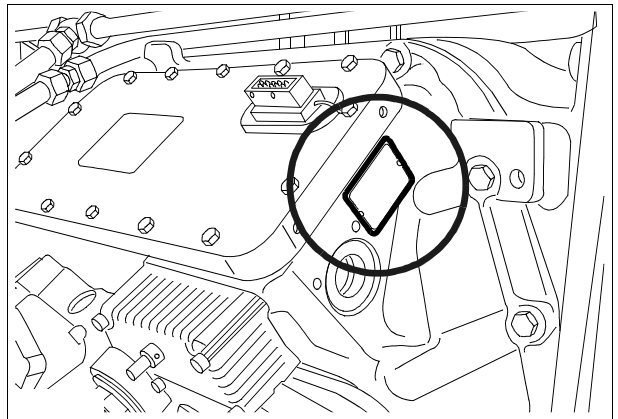
ENGINE



SC04A140

Serial no. _____

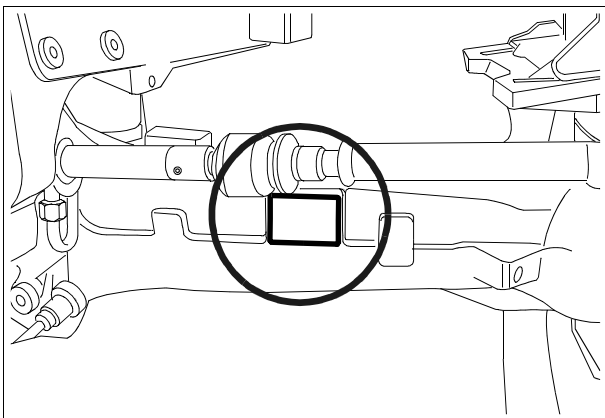
CARTRIDGE



SC04A094

Serial no. _____

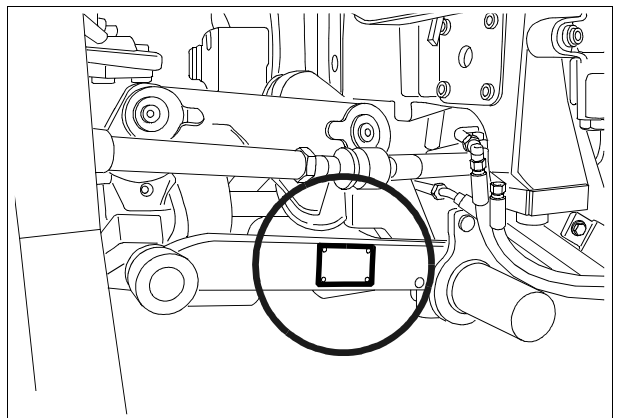
ALL-WHEEL DRIVE AXLE (if fitted)



SC04A091

Serial no. _____

ALL-WHEEL DRIVE AXLE independent suspension (if equipped with this)



SC04A092

Serial no. _____

SAFETY AND SAFETY PANELS



Before entry into service, first read this operators manual and the safety instructions and ensure you satisfy all the requirements stipulated.

You need to be aware that your own safety and the safety of others depends on how well you maintain and operate this vehicle. Before attempting to work with the vehicle, first familiarise yourself with the layout and function of all the instruments and controls ('operating elements'). **BEFORE STARTING WORK, ALWAYS TRY OUT ALL OPERATING ELEMENTS IN A SAFE LOCATION.**

READ THIS MANUAL COMPLETELY and ensure that you understand the purpose and function of all the operating elements. Every item of equipment possesses restrictions of one kind or another. Prior to starting work, always ensure that you are able to correctly estimate the speed, braking action, steerability, stability and load-bearing characteristics of this vehicle.

The safety instructions contained in this manual are not a substitute for safety regulations, insurance requirements, federal, regional and local legislation. You must therefore always ensure that your vehicle is equipped fully in accordance with applicable legislation and directives.

Modifications to this vehicle are only possible within the context of technical values and are subject to due compliance with layout guidelines, and any modifications which might affect homologation must be reported to the relevant authorities.

CNH Austria strives at all times to improve your personal safety: the company does this by manufacturing tractors equipped with ever better protective equipment, and through due reference to the rules governing safe operation.



IN THIS MANUAL THIS WARNING SYMBOL IS USED TO INDICATE IMPORTANT NOTES ON SAFETY. WHEREVER THIS SYMBOL APPEARS, ALL ENSUING INSTRUCTIONS MUST BE READ CAREFULLY AND THE READER MUST BE AWARE OF THE POTENTIAL RISKS OF INJURY OR EVEN FATALITY. M171B

INTENDED APPLICATION

This tractor is intended primarily for use in agricultural, rural community or forestry operations (intended application). The primary function of the tractor is to deliver tractive power, and can be used for pulling, pushing, carrying or operating defined items of equipment and machinery, or for pulling a trailer.

Any usage extending beyond the scope of the above list is defined as improper use. The manufacturer declines to accept any liability for resultant damage and injury. The operator is solely liable for such risk.

Correct usage also involves strict compliance with the operating, maintenance and repair instructions specified by the manufacturer.

This Case tractor can only be used, maintained and repaired by people who are familiar with the special characteristics of this vehicle and who have been advised of the relevant safety regulations (accident prevention).

Due compliance is mandatory with all applicable accident prevention specifications and with other generally recognised directives and guidelines governing technical safety, health & safety at work and road traffic safety.

The manufacturer rejects any liability for damage or injury resulting from modifications made to this vehicle independently by the operator.

 **RULES FOR GENERAL SAFETY
AND FOR ACCIDENT PREVENTION** 

- In addition to the instructions contained in these operating instructions, you must also observe the rules governing general safety and accident prevention.
- Comply with relevant legislation whenever you are using public highways.
- Before starting work, first familiarise yourself with all the equipment and operating elements and their functions. It is too late to do this once you have started working with the equipment.
- Before setting off, check the immediate area around the vehicle (e.g. children). Ensure you have a clear field of view.
- Never leave the engine running in confined spaces. Ensure there is adequate ventilation.
- Exercise caution when handling fuels. Increased risk of fire. Never fill the fuel tank near naked flames or near flying sparks. Do not smoke while refuelling.
- Before refuelling, switch off engine and remove key from ignition. Never top up fuel tank in confined areas. Wipe up spilled fuel immediately.
- To prevent the risk of fire, always keep the vehicle in a clean condition.
- Exercise caution when handling battery acid (toxic and corrosive).

 **TRANSPORTING PEOPLE** 

- Never carry passengers unless a legally acceptable passenger seat is provided.
- No other form of passenger transport is permitted.
- Children must only ever be transported in specially designed seats (available in trade retail outlets.)

 **DRIVING OPERATION** 

- Always adapt vehicle speed to suit prevailing conditions. When driving uphill or downhill, and when traversing slopes, avoid any sudden coming action. When cornering, always disengage the differential lock. Never disengage the clutch when driving downhill.
- Connect up trailers and/or equipment properly. The driving characteristics, steerability and braking action of this vehicle are all affected by the presence of towed equipment, trailers or ballast weights. You must therefore ensure at all times that you have enough strength to steer and brake the vehicle safely.
- Pay due attention to the maximum permitted axle loads and the gross tractor weight.
- When cornering while towing or carrying implements, pay due attention to the additional size and inertia weight of that equipment.

LEAVING THE TRACTOR

- When leaving the tractor, always ensure that it is not able to roll away (apply parking brake, chock the wheels).
- Remove the ignition key and lock the cab.
- Never leave the tractor unattended while the engine is running.
- Never leave the driver's platform/cab while the tractor is in motion.
- Before exiting the tractor, lower the implement or attachment unit to the ground.

TRAILED EQUIPMENT

- When connecting up trailers or implements, exercise particular caution – and never step between tractor and implement.
- Secure trailer and implements to prevent them from rolling away.
- Only start up the tractor once all guards are attached and are in their correct protective positions.

OPERATING THE P.T.O

- Before installing and removing the propshaft, always first switch off the engine.
- When operating the PTO, never allow anyone to stand near the rotating PTO shaft or drive shaft.
- Protective guards must be fitted over the input shaft and PTO stub shaft. Refer to Page 105.
- Implements with a high inertia torque do not stop immediately after the PTO shaft has been switched off. Use propshafts with an overrun sprag unit. Before cleaning or carrying out adjustments, always wait until the implement has finished working and has come to a complete stop.
- Immediately after removing the propshaft, cover the PTO shaft with a protective cap.

MAINTENANCE AND OTHER WORK

- Never carry out maintenance work on the tractor while the engine is running. Follow the instructions in this manual or consult the dealer.
- Fluid (hydraulic oil) escaping under high pressure can penetrate the skin and cause serious injuries. If any fluid does penetrate your skin, always seek immediate medical attention, otherwise serious infections might occur.
- Dispose of waste oil, fuel and used filters in accordance with local legislation. Do not drain oil into the ground or the drainage/sewerage system. Proceed in an environmentally aware manner.
- Tighten the wheel nuts after the number of operating hours specified in this manual. Refer to Page 156.
- Before carrying out any repair work to the electrical system on this vehicle, always first disconnect the battery earth/ground strap. Refer to Page 207.
- Only use genuine parts made by the manufacturer of this vehicle. All spare parts must comply with the technical requirements of the vehicle manufacturer.



HAZARDOUS CHEMICALS



- Serious injury can result from exposure to hazardous chemicals, or physical contact with them. The fluids, oils, paints, adhesives, coolants etc. Used on your vehicle can be dangerous.
- Always consider the environmental implications before carrying out any maintenance work on the vehicle, and prior to disposing of old fluids and waste oil. NEVER drain oil or operating fluids into the ground, or into containers which might develop leaks.
- For instructions on proper disposal, you should consult your local environmental authorities, a recycling company or that company's appointed agents.



BASIC RULE



- Always inspect your tractor before starting it up to ensure it is safe for use on roads and during working operations.

Buy Now



Our support email:

ebooklibonline@outlook.com