

NEW HOLLAND  
**42in  
and  
50in  
Twin  
Bagger**

Model  
No.  
For "G" Series Mowers  
Bagger Model # 715464006

87597468 01/2007

OPERATOR'S MANUAL

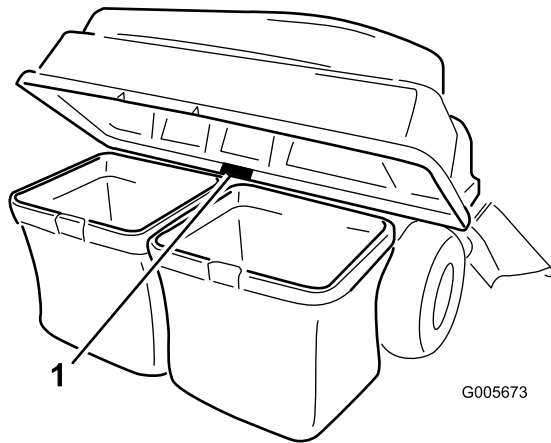


**NEW HOLLAND**

# Introduction

Read this information carefully to learn how to operate and maintain your product properly and to avoid injury and product damage. You are responsible for operating the product properly and safely.

Whenever you need service, genuine New Holland parts, or additional information, contact an Authorized Service Dealer or New Holland Customer Service and have the model and serial numbers of your product ready. Figure 1 identifies the location of the model and serial numbers on the product. Write the numbers in the space provided.



**Figure 1**

1. Model and serial number location

|                             |
|-----------------------------|
| <b>Model No.</b> _____      |
| <b>Product ID No.</b> _____ |

This manual identifies potential hazards and has safety messages identified by the safety alert symbol (Figure 2), which signals a hazard that may cause serious injury or death if you do not follow the recommended precautions.



**Figure 2**

1. Safety alert symbol

This manual uses 2 other words to highlight information. **Important** calls attention to special mechanical information and **Note** emphasizes general information worthy of special attention.

# Contents

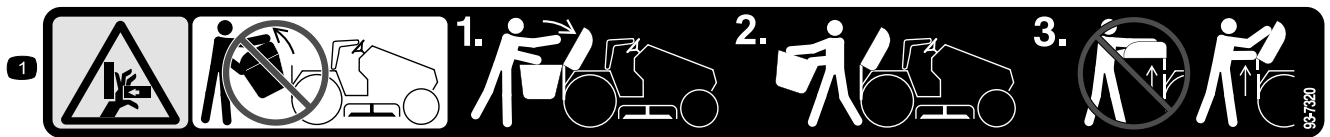
|   |    |
|---|----|
| Introduction .....                            | 2  |
| Safety .....                                  | 3  |
| Safety and Instructional Decals .....         | 3  |
| Setup .....                                   | 4  |
| 1 Installing the Weight .....                 | 5  |
| 2 Installing the Bagger Frame .....           | 6  |
| 3 Assembling the Bagger Top .....             | 6  |
| 4 Installing the Bagger Top .....             | 7  |
| 5 Installing the Chute On 42 Inch Decks ..... | 8  |
| 6 Installing the Chute on 50 inch Decks ..... | 10 |
| 7 Installing the Discharge Tube .....         | 11 |
| Operation .....                               | 12 |
| Emptying the Grass Bags .....                 | 12 |
| Clearing Obstructions from the Bagger .....   | 12 |
| Removing the Bagger .....                     | 13 |
| Operating Tips .....                          | 13 |
| Maintenance .....                             | 15 |
| Recommended Maintenance                       |    |
| Schedule(s) .....                             | 15 |
| Inspecting the Bagger Attachment .....        | 15 |
| Inspecting the Mower Blades .....             | 16 |
| Caring for the Grass Bags .....               | 16 |
| Cleaning the Bagger Attachment .....          | 16 |
| Storage .....                                 | 17 |
| Storing the Bagger Attachment .....           | 17 |

# Safety

## Safety and Instructional Decals

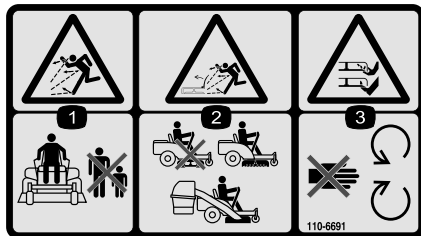


Safety decals and instructions are easily visible to the operator and are located near any area of potential danger. Replace any decal that is damaged or lost.



**TR93D7320**

1. Crushing hazard of hand—do not remove the whole bagger from the machine; open the bagger top and then remove the bag(s) from the bagger. Do not remove the bagger top when it is closed; open the bagger top and then remove it.



**TR110D6691**

1. Thrown object hazard—keep bystanders a safe distance from the machine.
2. Thrown object hazard, mower—do not operate the without deflector or grass collection system in place.
3. Cutting/dismemberment of hand or foot—stay away from moving parts.

# Setup

## Loose Parts

Use the chart below to verify that all parts have been shipped.

| Step     | Description                      | Qty. | Use                                      |
|----------|----------------------------------|------|--|
| <b>1</b> | Weight                           | 2    | Install the weight.                      |
|          | U-pin                            | 2    |  |
|          | Clevis pin                       | 2    |  |
|          | Washer                           | 6    |  |
|          | Hair pin                         | 6    |  |
| <b>2</b> | Bagger Quick Attach Bracket      | 1    | Install the bagger frame.                |
|          | Clevis pin (5/16 x 2-1/4 inch)   | 1    |  |
|          | Hair pin                         | 3    |  |
|          | Rod                              | 2    |  |
|          | Washer                           | 2    |  |
| <b>3</b> | Bagger top                       | 1    | Assemble the bagger top.                 |
|          | Bagger screen                    | 1    |  |
| <b>4</b> | Bagger                           | 1    | Install the bagger top.                  |
|          | Grass Bag                        | 2    |  |
| <b>5</b> | Baffle cutoff                    | 1    | Install the chute on 42 inch decks only. |
|          | Chute for 42 inch decks          | 1    |  |
| <b>6</b> | Baffle cutoff                    | 1    | Install the chute and discharge tube.    |
|          | Clip assembly (50 in decks only) | 1    |  |
|          | Lock nut (5/16 inch)             | 2    |  |
|          | Chute for 50 inch decks          | 1    |  |
| <b>7</b> | Discharge tube                   | 1    | Install the discharge tube.              |

## Step

# 1

## Installing the Weight

### Parts needed for this step:

|   |            |
|---|------------|
| 2 | Weight     |
| 2 | U-pin      |
| 2 | Clevis pin |
| 6 | Washer     |
| 6 | Hair pin   |

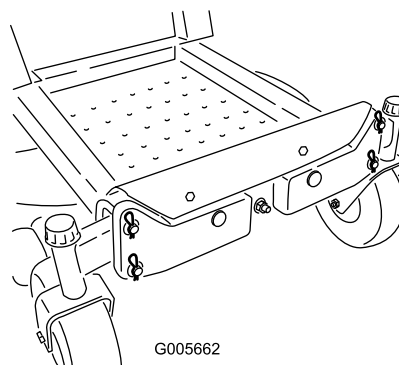
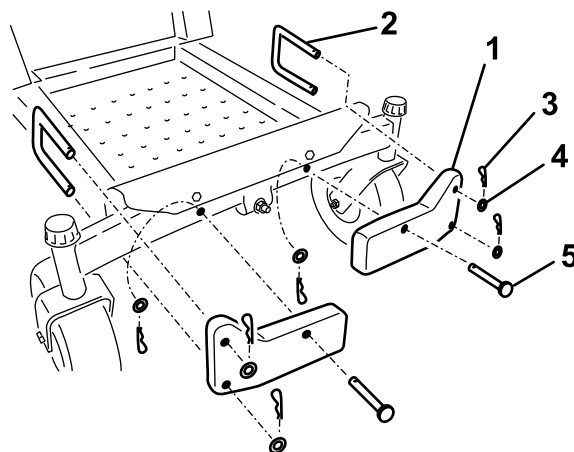
### Procedure



The bagger changes the weight distribution of the machine. Operating the machine without the front weights may cause an unstable condition which could result in a loss of control.

Ensure the front weights are properly installed before operating the machine with the bagger attachment.

Attach the weights to the front of the machine frame with two U-pins, two clevis pins, six washers, and six hair pins as shown in Figure 3.



**Figure 3**

- 1. Front weight
- 2. U-pin
- 3. Hair pin
- 4. Washer
- 5. Clevis pin

**Important:** When you remove the twin bagger, remember to remove the front weights.

Thank you so much for reading.  
Please click the “Buy Now!”  
button below to download the  
complete manual.



After you pay.

You can download the most  
perfect and complete manual in  
the world immediately.

Our support email:

[ebooklibonline@outlook.com](mailto:ebooklibonline@outlook.com)