

## PERSONAL SAFETY



*THIS SAFETY ALERT SYMBOL INDICATES IMPORTANT SAFETY MESSAGES IN THIS MANUAL. WHEN YOU SEE THIS SYMBOL, CAREFULLY READ THE MESSAGE THAT FOLLOWS AND BE ALERT TO THE POSSIBILITY OF DEATH OR SERIOUS INJURY. M171C*




Throughout this manual and on the machine's safety decals, you will find precautionary statements: **DANGER**, **WARNING** or **CAUTION** followed by specific instructions or ISO two panel safety pictorial symbols. These precautions are intended for your personal safety.

Failure to follow the **DANGER**, **WARNING** or **CAUTION** instructions may result in death or serious bodily injury.

**DANGER**, **WARNING** or **CAUTION** are defined as follows:

- **DANGER:** Indicates an immediate hazardous situation that, if not avoided, will result in death or serious injury. The color associated with Danger is RED.
- **WARNING:** Indicates a potentially hazardous situation that, if not avoided, could result in death or serious injury. The color associated with Warning is ORANGE.
- **CAUTION:** Indicates a potentially hazardous situation that, if not avoided, may result in minor or moderate injury. It may also be used to alert against unsafe practices. The color associated with Caution is YELLOW.

ISO two panel **pictorial symbol decals** are defined as follows:

- The first panel indicates the nature of the hazard.
- The second panel indicates the appropriate avoidance of the hazard.
- Background color is YELLOW.
- Prohibition symbols such as   and  if used, are RED.



# WARNING

IMPROPER OPERATION OF THIS MACHINE CAN CAUSE DEATH OR SERIOUS INJURY. BEFORE USING THIS MACHINE, MAKE CERTAIN THAT EVERY OPERATOR:

- Is instructed in safe and proper use of the machine.
- Reads and understands the Manual(s) pertaining to the machine.
- Reads and understands ALL Safety Decals on the machine.
- Clears the area of other persons.
- Learns and practices safe use of machine controls in a safe, clear area before operating this machine on a job site.

It is your responsibility to observe pertinent laws and regulations and follow CNH America LLC instructions on machine operation and maintenance.

## **CNH America LLC Technical Manuals**

Manuals are available from your Dealer for the operation, service and repair of your machine. For prompt convenient service, contact your Dealer for assistance in obtaining the manuals for your machine.

Your Dealer can expedite your order for Operators Manuals, Parts Catalogs, Repair Manuals and maintenance records.

Always give the Machine Name, Model and P.I.N. (Product Identification Number) or S.N. (Serial Number) of your machine so your Dealer can provide the correct manuals for your machine.

The company is continually striving to improve its products and therefore reserves the right to make improvements and changes when it becomes practical and possible to do so, without incurring any obligation to make changes or additions to the equipment sold previously.

All data given in this manual is subject to production variations. **IMPORTANT: OPERATING AND SERVICE MESSAGES DISPLAYED ON THE ELECTRONIC OPERATING PANEL MAY VARY FROM WHAT IS SHOWN IN THE OPERATOR'S MANUAL. SHOULD THIS OCCUR ADHERE TO THE LATEST INSTRUCTION ON THE ELECTRONIC OPERATING PANEL.**

Dimensions and weights are approximate only and the illustrations do not necessarily show the machine in standard condition. For exact information about any particular machine, please consult your dealer.

---

# GENERAL TABLE OF CONTENTS

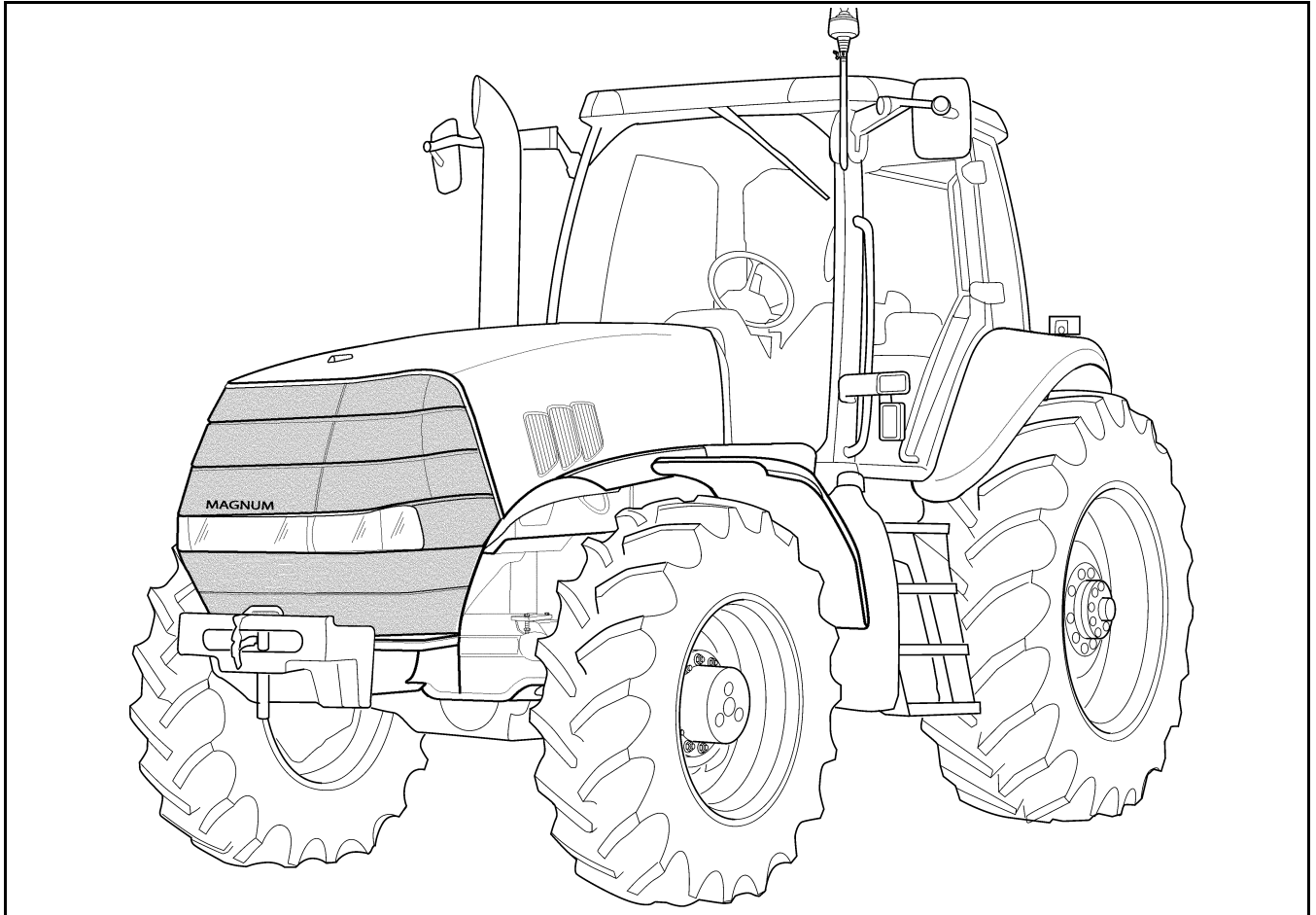
<b>1 – TO THE OWNER</b> .....	<b>1</b>
STATEMENT OF TRACTOR INTENDED USE .....	2
OPERATOR'S MANUAL STORAGE COMPARTMENT .....	2
EUROPEAN DECLARATION OF CONFORMITY .....	3
TRANSPORT TOWED EQUIPMENT AT SAFE SPEEDS .....	4
PRODUCT IDENTIFICATION AND SERIAL NUMBERS .....	5
MACHINE COMPONENTS .....	7
BUSINESS BAND RADIOS .....	9
FRAME REINFORCEMENT KITS .....	10
<b>2 – SAFETY/DECALS</b> .....	<b>11</b>
SAFETY DECALS .....	17
ROLLOVER PROTECTIVE STRUCTURE (ROPS) .....	22
CAB STRUCTURAL FRAME (CSF) .....	22
SEAT BELTS .....	23
CLEANING CAB WINDOWS .....	24
INTERIOR REAR VIEW MIRROR .....	24
TRACTOR WARNING LAMPS .....	25
<b>3 – OPERATING CONTROLS</b> .....	<b>27</b>
TRACTOR ACCESS .....	27
OPERATOR SEAT AND CONTROLS .....	28
INSTRUCTIONAL SEAT (IF EQUIPPED) .....	31
STEERING COLUMN CONTROLS .....	32
CENTER CONSOLE CONTROLS .....	34
FOOT PEDALS .....	36
RIGHT HAND CONSOLE CONTROLS .....	38
ARMREST CONSOLE CONTROLS .....	45
RIGHT HAND FENDER CONTROLS .....	48
AUTOMATIC TEMPERATURE CONTROL SYSTEM .....	55
AFS 200 DISPLAY .....	60
AFS PRO 600 DISPLAY .....	60
REAR WINDOW .....	61
DOME LAMP .....	62
MAP LAMP (IF EQUIPPED) .....	62
STORAGE COMPARTMENT .....	62
RADIO (IF EQUIPPED) .....	63
MP3 PLAYER JACK (EARLY VERSION) (IF EQUIPPED) .....	63
MP3 PLAYER JACK (LATER VERSION) (IF EQUIPPED) .....	63
SUN SHADE (IF EQUIPPED) .....	64
INTERIOR REAR VIEW MIRROR .....	64
EXTENDABLE MIRRORS .....	64
UTILITY CONSOLE .....	65
REAR FENDER CONTROLS .....	65
<b>4 – INSTRUMENTATION</b> .....	<b>67</b>
INSTRUMENTATION CLUSTER OVERVIEW .....	67
PROGRAMMING THE INSTRUMENTATION DISPLAY .....	74
PROGRAMMING THE OPERATOR ADJUST MENU .....	80
WARNING/FAULT DISPLAYS .....	83
INSTRUMENTATION CLUSTER OPERATION .....	89
<b>5 – OPERATING INSTRUCTIONS</b> .....	<b>108</b>
BEFORE STARTING THE ENGINE .....	108
SERVICE INDICATOR LAMPS AND BAR GRAPH DISPLAYS .....	109

NORMAL ENGINE STARTING PROCEDURE .....	110
STOPPING THE ENGINE .....	112
COLD TEMPERATURE OPERATION .....	113
POWER SHIFT TRANSMISSION .....	116
TRANSMISSION .....	117
SUSPENDED MFD AXLE OPERATION (IF EQUIPPED) .....	135
CUSHION HITCH RIDE CONTROL OPERATION (IF EQUIPPED) .....	142
CONSTANT ENGINE SPEED OPERATION .....	144
TOWING THE TRACTOR .....	145
HOW TO TRANSPORT THE TRACTOR .....	148
<b>6 – FIELD OPERATION .....</b>	<b>149</b>
GENERAL PROCEDURES FOR CONNECTING IMPLEMENTS .....	149
POWER TAKEOFF (PTO) .....	151
THREE POINT HITCH .....	171
HITCH OPERATION .....	184
DRAWBAR PREPARATION .....	202
HEIGHT ADJUSTABLE TRAILER HITCHES (IF EQUIPPED) .....	207
IMPLEMENT/TRAILER DRAWBAR DIMENSIONS .....	211
FRONT HITCH (IF EQUIPPED) .....	213
REMOTE HYDRAULICS .....	217
LOADER OPERATION .....	234
CHEMICAL TANK MOUNTING .....	235
AUXILIARY POWER CONNECTIONS .....	237
MONITOR MOUNTING .....	239
GROUND SPEED SENSOR CONNECTOR .....	240
TRAILER BRAKE CONNECTOR (IF EQUIPPED) .....	241
CAB STEPS .....	244
<b>7 – IN-FIELD PERFORMANCE .....</b>	<b>245</b>
DIFFERENTIAL LOCK .....	245
MFD OPERATION .....	248
BALLASTING YOUR TRACTOR FOR OPTIMUM PERFORMANCE .....	253
TIRE LOAD AND INFLATION CHART .....	257
FRONT END WEIGHTS .....	258
TIRE LIQUID WEIGHT .....	263
TIRE AND RIM SERVICE .....	264
WHEEL SLIP .....	266
POWER HOP .....	268
MECHANICAL FRONT DRIVE (MFD) TRACTORS .....	269
MFD STEERING AND OSCILLATION STOPS .....	273
FRONT WHEEL FENDERS (IF EQUIPPED) .....	275
REAR AXLE .....	279
TRACTOR JACKING POINTS .....	281
REAR WHEEL TREAD SETTING - SINGLES .....	283
<b>8 – LUBRICATION/FILTERS/FLUIDS/MAINTENANCE .....</b>	<b>285</b>
ENVIRONMENT .....	285
PLASTIC AND RESIN PARTS .....	285
TOOL BOX (IF EQUIPPED) .....	285
SYSTEM CAPACITIES .....	286
HOOD AND SERVICE DOOR ACCESS .....	290
LUBRICATION/MAINTENANCE CHART .....	292

---

<b>9 – ELECTRICAL SYSTEM</b> .....	<b>344</b>
SPECIFICATIONS .....	344
RADIO REGIONAL PROGRAMMING .....	349
BATTERY SYSTEM SERVICING .....	350
BULB AND LAMP REPLACEMENT .....	353
<b>10 – SPECIFICATIONS</b> .....	<b>369</b>
DIESEL ENGINE .....	369
POWER TRAIN .....	370
TRAVEL SPEEDS .....	374
MAXIMUM PERMITTED OPERATING WEIGHTS .....	385
MAXIMUM RECOMMENDED OPERATING WEIGHTS .....	386
NOISE LEVELS .....	387
<b>INDEX</b> .....	<b>389</b>

**MAGNUM SERIES TRACTOR**



RH02M096B6

**NOTE:** *The right and left side of the tractor used in this manual are the same as the right hand and left hand when sitting in the tractor seat looking forward.*



CNH America LLC  
700 State Street  
Racine, WI 53404  
U.S.A.

DEALER'S STAMP



## TO THE OWNER

This manual contains important information about the safe operation, adjustment and routine maintenance of your Magnum Series Tractor. The manual is divided into ten sections as outlined in the General Table of Contents Page(s). Refer to the Detail Index at the end of this manual for locating specific items about your tractor.

DO NOT operate or permit anyone to operate or service this machine until you or the other persons have read this manual. Use only trained operators who have demonstrated the ability to operate and service this machine correctly and safely.

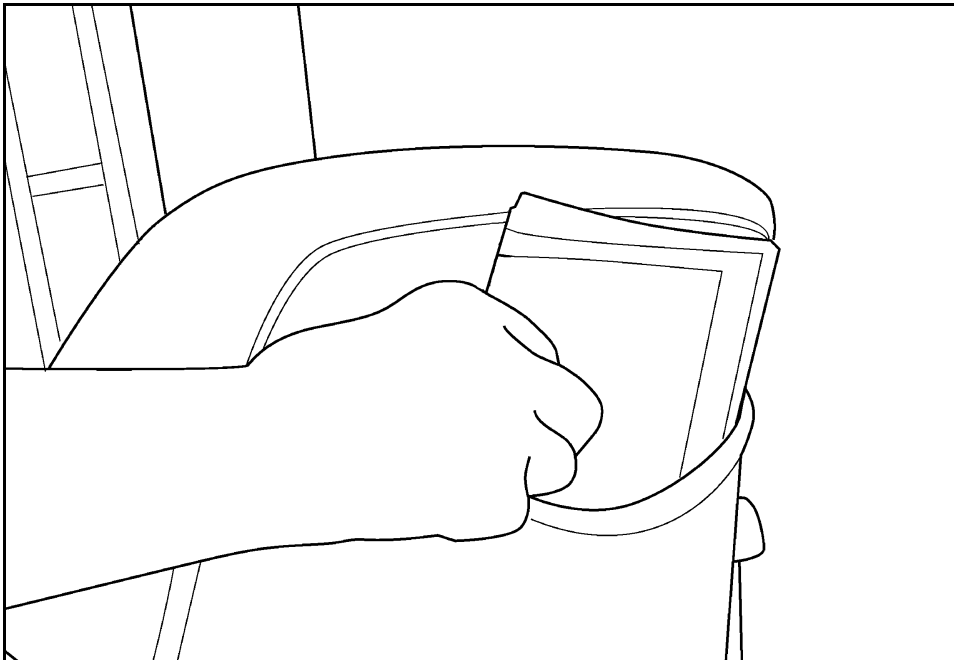
This Operator's Manual is to be stored in the manual compartment equipped on this machine. Make sure this manual is in good condition. Contact your Case IH dealer to obtain additional manuals. Contact your dealer for any further information or assistance about your machine. Your dealer has Case IH approved service parts. Your dealer has technicians with special training that know the best methods of repair and maintenance for your tractor.

## STATEMENT OF TRACTOR INTENDED USE

The Case IH Magnum Series Tractor, with standard equipment and authorized attachments, is intended to be used for customary farming, land leveling and related agriculture operations. Installation of utility (dozer) blades, tile plows, or push bars on the tractor is not recommended. Any tractor damage resulting from the installation and/or use of such equipment is not covered by the tractor warranty.

Consult an authorized dealer or CNH America LLC on changes, additions or modifications that can be required for this machine to comply with various regulations and safety requirements. Unauthorized modifications will cause serious injury or death. Anyone making such unauthorized modifications is responsible for the consequences.

## OPERATOR'S MANUAL STORAGE COMPARTMENT



RH02M017

Keep the Operator's Manual in the storage compartment provided on your tractor.

The Operator's Manual must be available for use by all operators.

## EUROPEAN DECLARATION OF CONFORMITY

This tractor complies with the provisions of directive 89/336/EEC Electromagnetic Compatibility.

### EMC - Supplementary Information

Safety information for the supplementary installation of electrical and electronic appliances and/or components.

This tractor is equipped with electronic constituents and component parts whose function can be influenced by electromagnetic radiations of other appliances. Such influences can cause hazards for persons if the following safety information is not taken into account:

1. For supplementary installation of electrical and electronic appliances and/or constituents on the tractor with a connection to the onboard system, the user HAS to verify whether the installation causes disturbances to the electronics on the tractor or other constituents. This particularly applies to:

A. Powershift Control Button                      B. Instrument Cluster

Also it has to be taken into account that the supplementary installed electrical and electronic components comply with the EMC Directive 89/336/EEC in the respective current version and that they are CE marked.

2. For the supplementary installation of mobile communication systems (i.e. radio communication, mobile telephone) the following additional requirements have to be fulfilled:

- A. Only devices with an approval complying with the valid national regulations must be installed.
- B. The devices must be firmly installed.
- C. The operation of portable or mobile devices within the cab of the tractor is ONLY permitted if the device has a fixed outside antenna.
- D. The transmitting part shall be installed separately to the tractor electronics.
- E. Installation of the antenna must be carried out by a professional and the antenna must have a good ground connection between the antenna and the tractor ground.

For the correct size cabling, installation and the maximum permissible current supply, the installation instructions of the tractor manufacturer have to be considered additionally.



## TRANSPORT TOWED EQUIPMENT AT SAFE SPEEDS

Your tractor is capable of operating at speeds that exceed the maximum allowable transport speed for most towed equipment.

Before transporting towed equipment, read the operator manual for the equipment. Ensure that equipment is correctly installed, know how to transport it safely,

Never transport at speeds that exceed the equipment's maximum transport speed. Exceeding the equipment's maximum transport speed may result in reduced braking performance and/or loss of control of the tractor and its towed equipment.

Unless otherwise specified by the equipment manufacturer or legislation, observe the following when towing.

For towed equipment without brakes. Do not tow equipment that does not have brakes

- At speeds over 32 km/h (20 mile/h); or
- That, when fully loaded, has a mass (weight) over 1.5 metric tonnes (3300 lb.) and more than 1.5 times the mass (weight) of the tractor
- When trailer brakes are required by law
- That has a mass (weight) that exceeds the values declared on the tractor PIN plate (as applicable)

For towed equipment with brakes. Do not tow equipment that has brakes

- At speeds over 40 km/h (25 mile/h); or
- That, when fully loaded has a mass (weight) more than 2.5 times the mass (weight) of the tractor
- That has a mass (weight) that exceeds the values declared on the tractor PIN plate (as applicable)

## PRODUCT IDENTIFICATION AND SERIAL NUMBERS

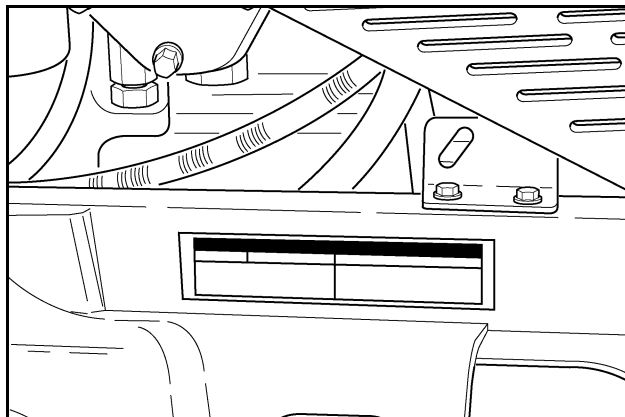
Write your machine Model Number, Product Identification Number (P.I.N.) and Serial Numbers of major components on the lines provided. If needed, give these numbers to your Case IH dealer when you need parts or information for your machine.

### TRACTOR MODEL AND PRODUCT IDENTIFICATION NUMBER

Model: \_\_\_\_\_

P.I.N. \* \_\_\_\_\_

Located on right hand front casting.

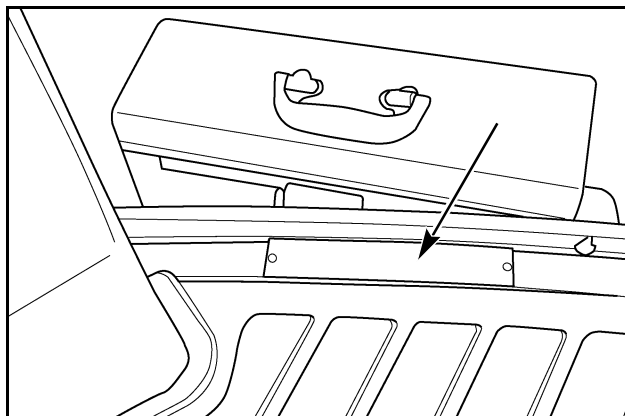


RH02H283

### ROLL OVER PROTECTION SYSTEM (ROPS) SERIAL NUMBER

\_\_\_\_\_

Located on the right hand cab floor.

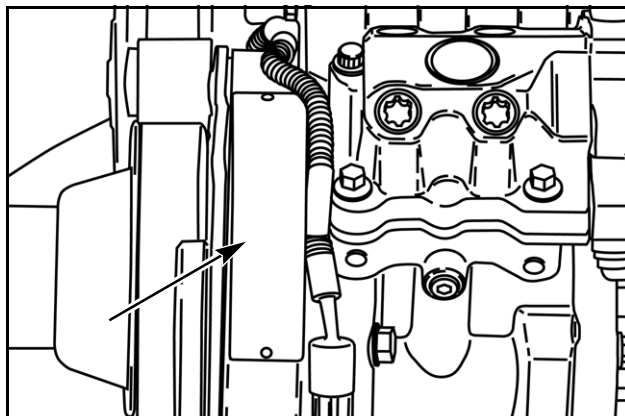


RH02H174

### ENGINE SERIAL NUMBER

\_\_\_\_\_

Located on front left hand side of engine.

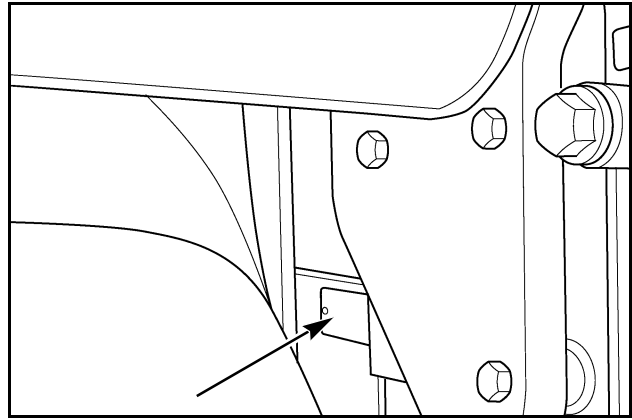


RD05J163

TRANSMISSION SERIAL NUMBER

\_\_\_\_\_

Located on the right hand side of the transmission behind the fuel tank and to the left of the ground stud.



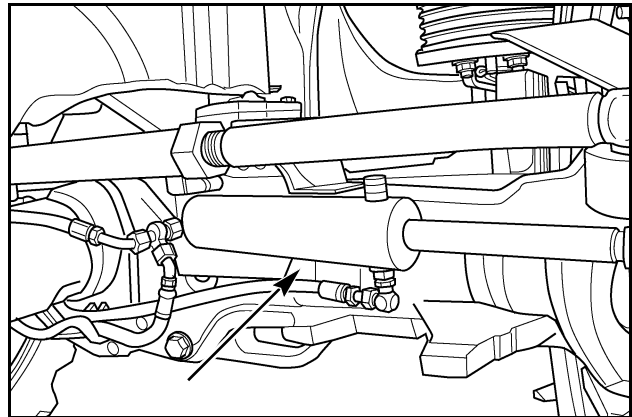
RH02H176

AXLE SERIAL NUMBER

\_\_\_\_\_

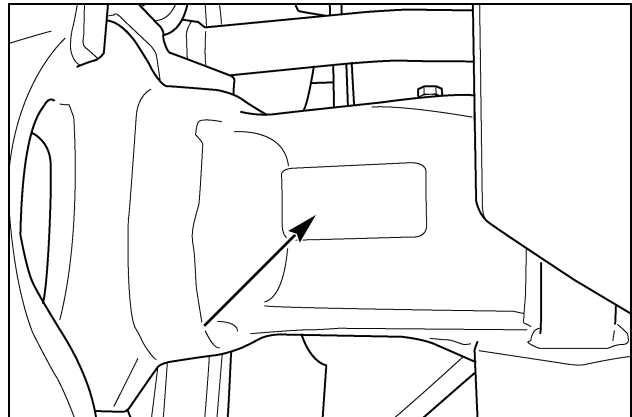
**MFD AXLE:** Located on the rear right hand side of the axle housing.

**SUSPENDED AXLE:** Located on the front right hand side of the axle housing.



RH02H178

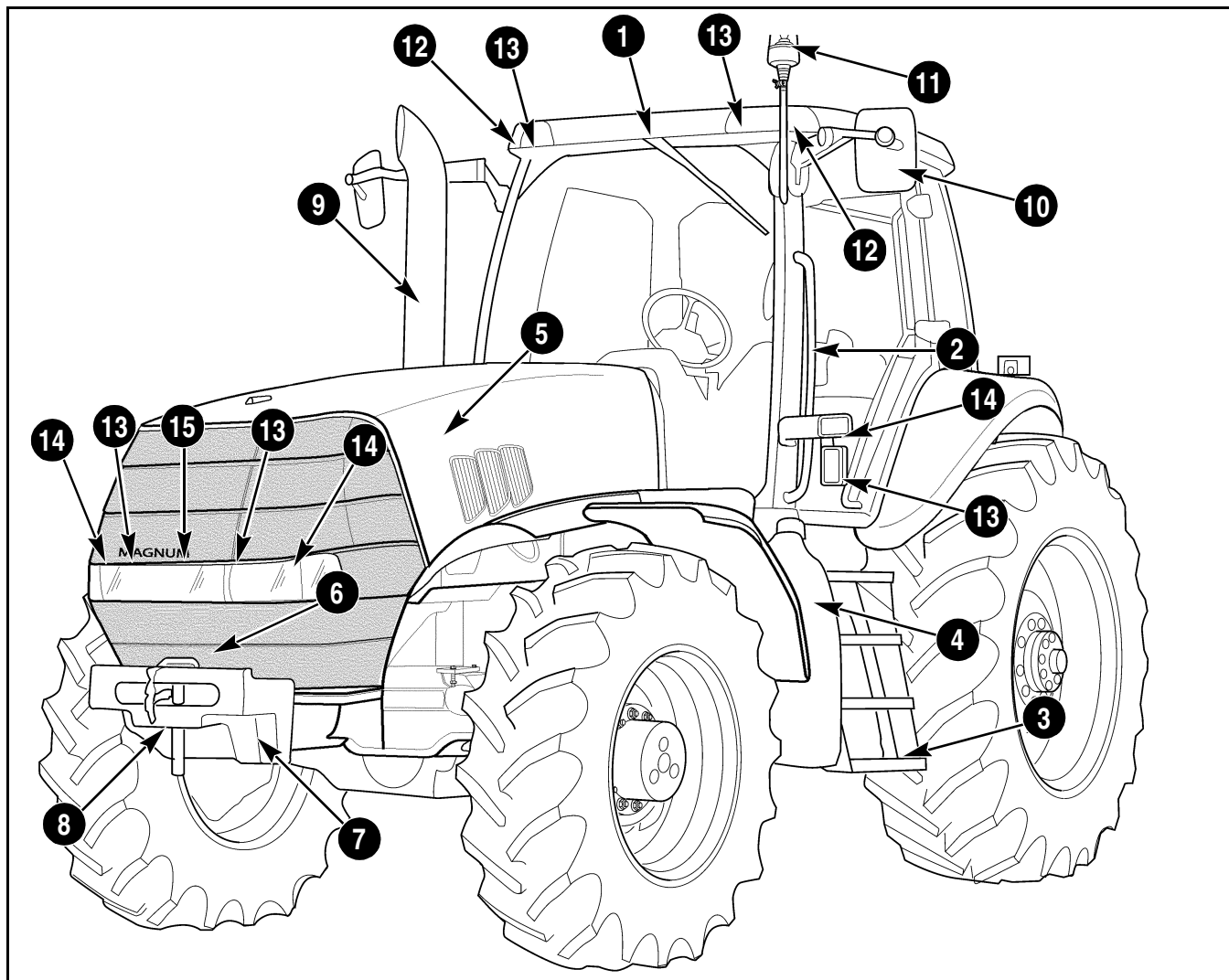
**MFD Axle**



RH02G351

**Suspended Axle**

## MACHINE COMPONENTS



RH02M096B6

- 1. ROPS CAB
- 2. HAND RAIL
- 3. STEPS
- 4. FUEL TANK

- 5. HOOD
- 6. HOOD RELEASE
- 7. FRONT WEIGHT BRACKET
- 8. FRONT CLEVIS

- 9. EXHAUST STACK
- 10. EXTENDIBLE MIRROR
- 11. BEACON
- 12. AMBER WARNING LAMP

- 13. WORK LAMP
- 14. ROAD/WORK LAMP
- 15. HID LAMP

**Buy Now**



Our support email:

[ebooklibonline@outlook.com](mailto:ebooklibonline@outlook.com)