

GENERAL TABLE OF CONTENTS

1-TO THE OWNER	1
STEIGER SERIES TRACTORS	3
PRODUCT IDENTIFICATION AND SERIAL NUMBERS	4
CHEMICAL TANK MOUNTING	9
BUSINESS BAND RADIO READY (IF EQUIPPED)	10
PRE-CONDITIONING NEW TRACKS	12
2 – SAFETY/DECALS	15
SAFETY	15
PERSONAL SAFETY	18
INSTRUCTIONAL SEAT SAFETY	18
MAINTENANCE SAFETY	19
FIRE SAFETY	19
BATTERY SAFETY	20
MACHINE OPERATION AND ROLL-OVER SAFETY	20
HAZARDOUS CHEMICALS	21
SAFETY DECALS	22
ARTICULATION CYLINDER LOCKING BLOCKS	26
OPERATOR PROTECTIVE STRUCTURE	27
SEAT BELTS	29
TRACTOR WARNING LAMPS AND SMV SYMBOL	30
IMPLEMENT WARNING LAMPS AND SMV SYMBOL	31
SAFETY CHAIN	31
3-OPERATING CONTROLS	33
TRACTOR ACCESS	33
OPERATOR'S SEAT WITH AIR SUSPENSION	35
STEERING COLUMN CONTROLS	39
STEERING COLUMN ADJUSTMENT	40
FOOT PEDALS	41
CENTER CONSOLE CONTROLS	42
RH ARMREST CONTROL CONSOLE	44
REMOTE VALVE FUNCTION CONTROL	47
ARM REST CONTROL CONSOLE ADJUSTMENT (IF EQUIPPED)	53
UPPER CONSOLE CONTROLS	53
HVAC CONTROL SYSTEM	57
AUTOMATIC TEMPERATURE CONTROL OPERATION	60
4-INSTRUMENTATION	65
ROPS POST INSTRUMENT CLUSTER	65
PROGRAMMING THE DISPLAY MONITOR	70
CHANGING U.S. STANDARD OR METRIC DISPLAY UNITS	70
CHANGING TIRE RADIUS	71
TIRE AVERAGE ROLLING RADIUS CHART	72
DYNAMIC ROLLING RADIUS	72
RADAR SENSOR CALIBRATION	73
RADAR CALIBRATION PROCEDURE	73
OLD HOURS	74
OPERATOR ADJUSTED MENU PROGRAM	75
WARNING FAULT DISPLAYS	79
CRITICAL WARNING DISPLAYS - LEVEL 1 - STANDARD AND PERFORMANCE	79
NON-CRITICAL DISPLAYS - LEVEL 2 - STANDARD AND PERFORMANCE	80

5-OPERATING INSTRUCTIONS	97
BEFORE STARTING THE ENGINE	97
SEAT BELTS	98
NORMAL ENGINE STARTING PROCEDURE	99
STOPPING THE ENGINE	101
COLD TEMPERATURE OPERATION	102
TOWING THE TRACTOR	106
TRANSPORTING THE TRACTOR	107
FRONT STEERING OPERATION (IF EQUIPPED)	108
COMBINATION STEERING OPERATION	108
CRAB STEERING	108
ARTICULATION ONLY STEERING OPERATION	108
STEERING DISPLAY MONITOR	108
POWERSHIFT TRANSMISSION OPERATION	109
AUTOSHIFT OPERATION	113
24-SPEED TRANSMISSION OPERATION (IF EQUIPPED)	117
DIFFERENTIAL LOCK	119
CONSTANT ENGINE SPEED OPERATION (IF EQUIPPED)	120
6-FIELD OPERATION	121
OPERATING THE POWER TAKEOFF (PTO)	123
STANDARD DRAWBAR	125
THREE POINT HITCH PREPARATION	130
HITCH COUPLER - CATEGORY III OR IV-N	135
HITCH OPERATION	139
REMOTE HYDRAULICS	150
AUXILIARY IMPLEMENT POWER CONNECTIONS	161
7-IN FIELD PERFORMANCE	165
TRACTOR BALLAST	165
FRONT AND REAR SUITCASE WEIGHTS	171
FRONT SUITCASE WEIGHT, TIE BOLT AND CLAMP INSTALLATION	172
WHEEL WEIGHTS	174
WHEEL WEIGHT BOLT TORQUE	174
TIRE AND RIM SERVICE	175
7-IN FIELD PERFORMANCE	176
TIRE PRESSURE FOR MAXIMUM TIRE LOAD AT RATED INFLATION	178
WHEEL BOLT TORQUES	181
WHEEL OFFSET DIRECTION CHANGE	181
SCRAPER OPERATING PROCEDURES	191
8-LUBRICATION/FILTERS/FLUIDS/MAINTENANCE	193
LUBRICATION AND MAINTENANCE	193
PLASTIC AND RESIN PARTS	193
LUBRICANTS AND CAPACITIES	193
ENGINE LUBRICATION	194
GRILLE AND HOOD ACCESS	196
LUBRICATION AND MAINTENANCE CHART	199
AIR INDUCTION SYSTEM	223
PRESSURE COOLING SYSTEM	245
SCA SERVICE REQUIREMENTS	245
INSPECTION OF TRACKS AND UNDERCARRIAGE	247
TRACK ROTATION	247
TRACK (BELT) TENSION RELEASE	248
TRACK (BELT) ALIGNMENT	250

9-ELECTRICAL SYSTEM	253
SPECIFICATIONS	253
GENERAL SERVICE INFORMATION	259
GENERAL SPECIFICATIONS	261
10-SPECIFICATIONS	261
TRACTOR WEIGHTS	265
APPROXIMATE TRAVEL SPEEDS (MPH)	267
APPROXIMATE TRAVEL SPEEDS (KPH)	268
APPROXIMATE TRAVEL SPEEDS (MPH)	269
APPROXIMATE TRAVEL SPEEDS (KPH)	270
APPROXIMATE TRAVEL SPEEDS (MPH)	271
APPROXIMATE TRAVEL SPEEDS (MPH)	272
APPROXIMATE TRAVEL SPEEDS (KPH)	273
APPROXIMATE OVERALL MEASUREMENTS	274
DETAIL INDEX	277

GENERAL INFORMATION

INTRODUCTION TO THIS MANUAL

This manual contains important information about the safe operation, adjustment and routine maintenance of your Case IH Steiger Series Tractor. The manual is divided into ten sections as outlined in the General Table of Contents Page(s). Refer to the Detail Index at the end of this manual for locating specific items about your tractor.

Use this manual as a guide. Your tractor will remain a reliable working machine as long as it is kept in good working condition and serviced properly.

Read this manual before you start the engine or operate this tractor. If any information in this manual is not understood, or if you need more information or assistance, contact your dealer. All persons training to operate, or who will be operating this tractor, should be old enough to possess a valid local vehicle operating permit (or other applicable local age requirement) and must have demonstrated the ability to operate and service the tractor correctly and safely.

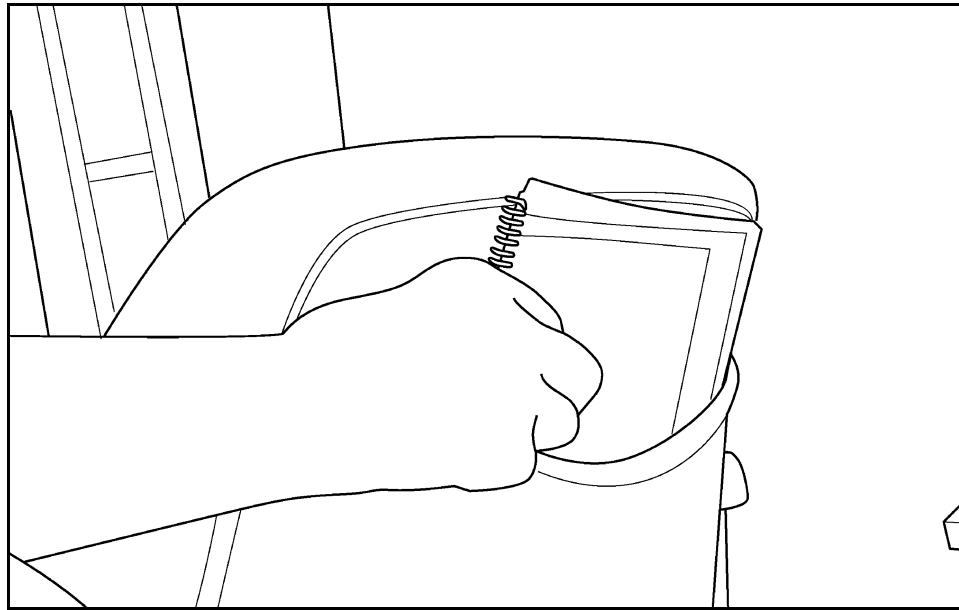
If your tractor requires replacement parts, do not use unauthorized parts or substitute materials. Case dealers stock Case IH approved service parts and have technicians with special training that know the best methods of repair and maintenance for your tractor.

STATEMENT OF TRACTOR INTENDED USE

The Steiger Series Tractor, with standard equipment and authorized attachments, is intended to be used for customary farming, land leveling and related agriculture operations.

Installation of utility (dozer) blades, tile plows, front loaders or push bars on the tractor is not recommended. Any tractor damage resulting from the installation and/or use of such equipment is not covered by the tractor warranty.

OPERATOR MANUAL STORAGE COMPARTMENT



MK99H025

DO NOT permit anyone to operate or service this tractor until you or other operators have read this manual. The Operator's Manual is a part of your tractor and must be available to all operators. Make sure the manual is complete and in good condition.

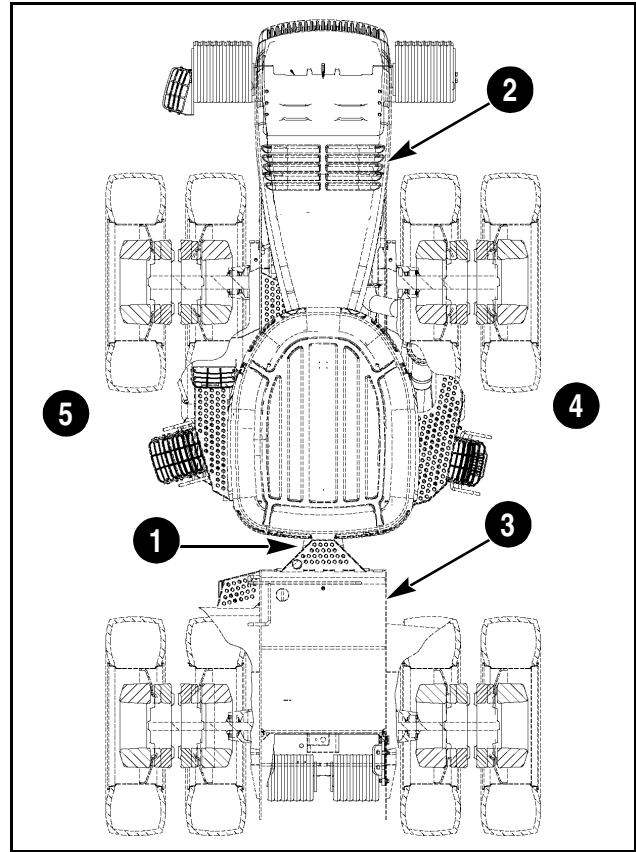
Store the Operator's Manual and other important tractor information in the storage compartment provided on the rear side of the seat backrest.

TRACTOR ORIENTATION

The Steiger Series Tractor is classified as a four-wheel drive articulating vehicle. The standard tractor consists of front and rear frame assemblies that steer by pivoting at the center articulation joint (1).

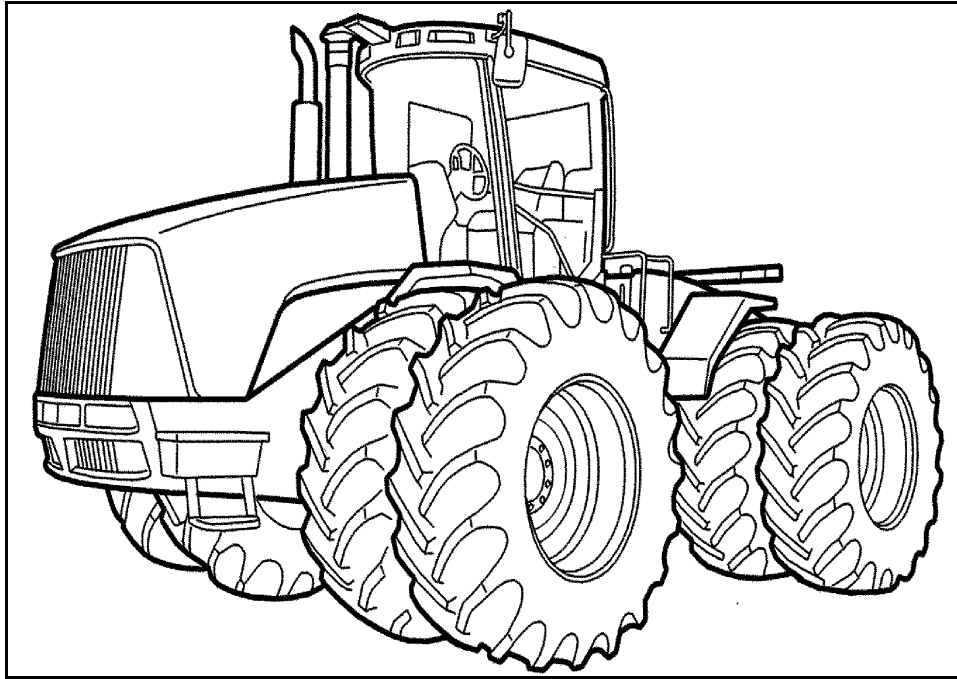
The standard tractor front frame (2) incorporates the engine, front axle, transmission and cab. The rear frame (3) incorporates the rear axle and fuel tank.

The right hand (RH) (4) and left hand (LH) (5) side of the tractor as used in this manual are the same as your right hand and left hand when sitting in the operator's seat looking forward over the engine.



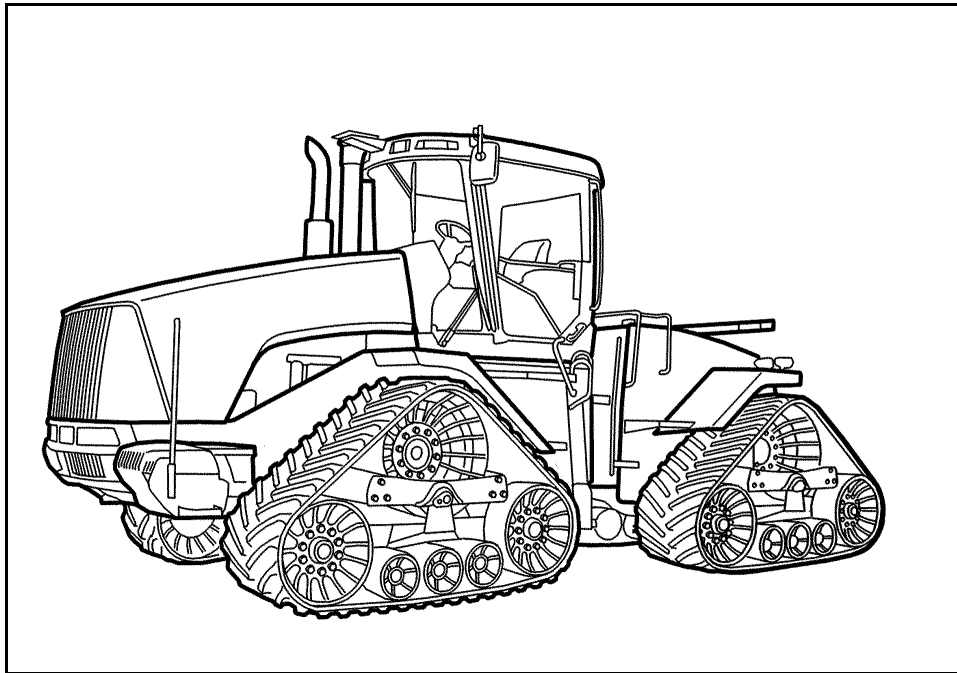
MA00A013

STEIGER SERIES TRACTORS



MT05M077

STEIGER WHEEL TRACTOR



MT05M072

STEIGER QUADTRAC TRACTOR

PRODUCT IDENTIFICATION AND SERIAL NUMBERS

Write your machine Model Number, Product Identification Number (P.I.N.) and Serial Numbers of major components on the lines provided. If needed,

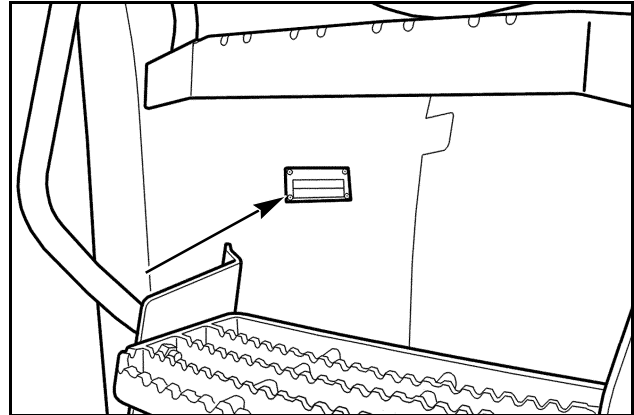
give these numbers to your dealer when you need parts or information for your machine.

TRACTOR MODEL AND PRODUCT IDENTIFICATION NUMBERS

Model: _____

P.I.N. * Z: _____

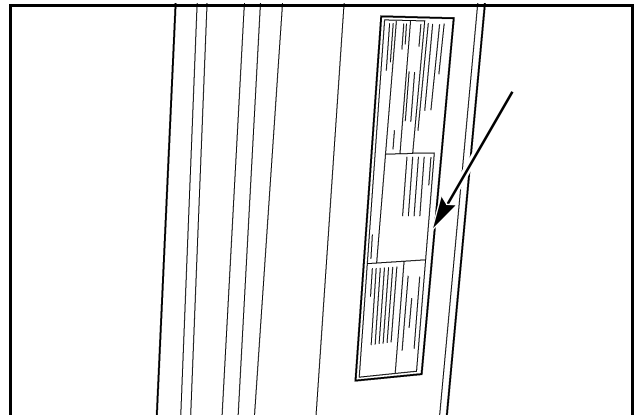
Located on the upper back side of the LH front fender.



MT04M004

ROLLOVER PROTECTIVE STRUCTURE (ROPS) SERIAL NUMBER

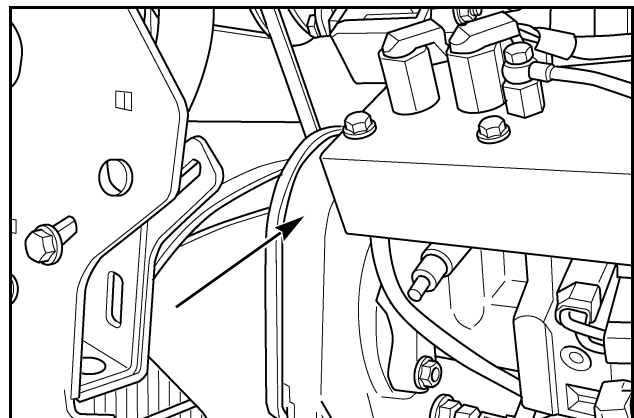
Located under the cover of the LH front ROPS post.



MK01G271

ENGINE SERIAL NUMBER (480 - 530)

Located on the top LH side of the engine valve cover.

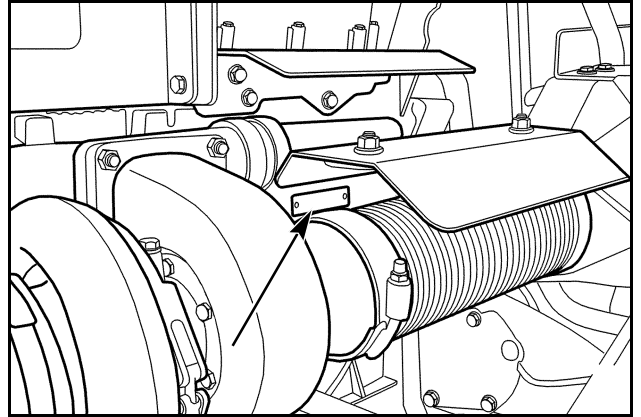


MK99K053

1-TO THE OWNER

ENGINE SERIAL NUMBER (380 - 430)

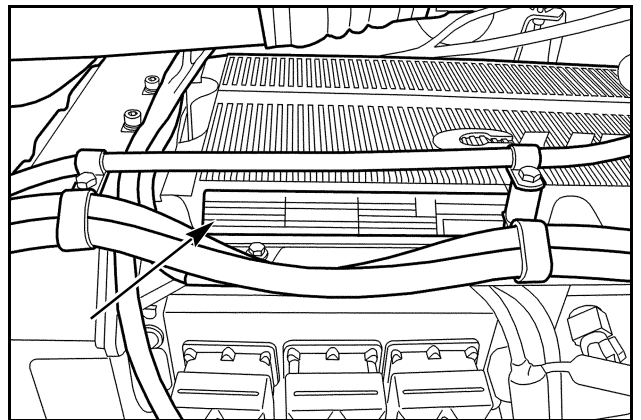
Located on the LH upper side under the heat shield.



MT05M015

ENGINE SERIAL NUMBER (480 - 530)

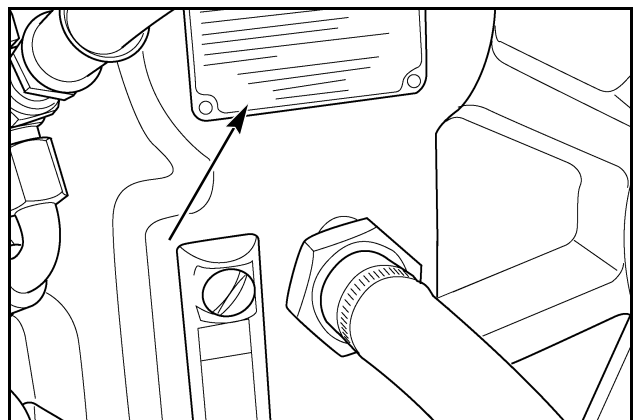
Located on the LH upper side under the heat shield.



MT05M016

TRANSMISSION SERIAL NUMBER

Located on the LH rear side of the transmission.



MK98C005

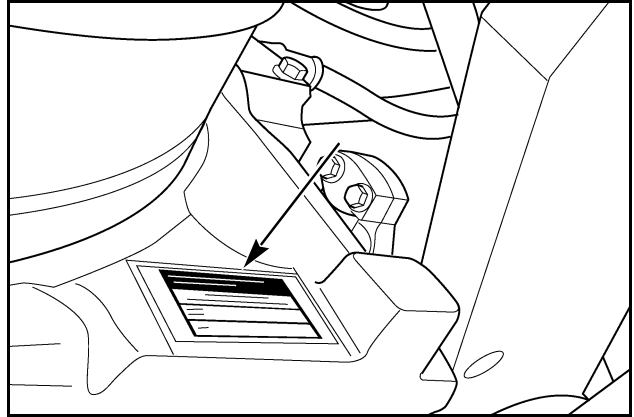
1-TO THE OWNER

AXLE SERIAL NUMBER (280-330)

Front _____

Rear _____

Located on the side of the axle center housing.



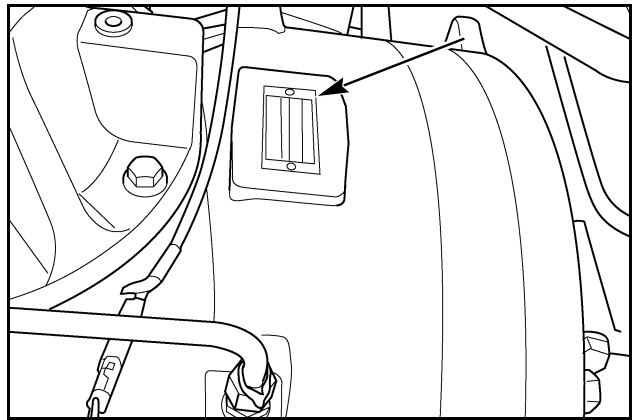
MK99K097

AXLE SERIAL NUMBER (380, 430, 480, 530)

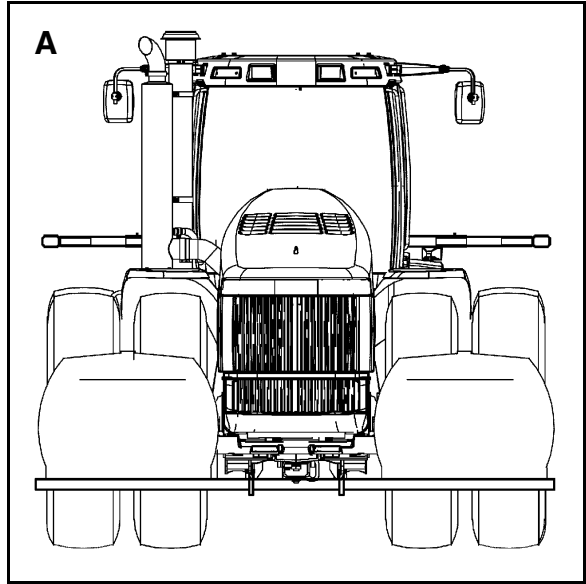
Front _____

Rear _____

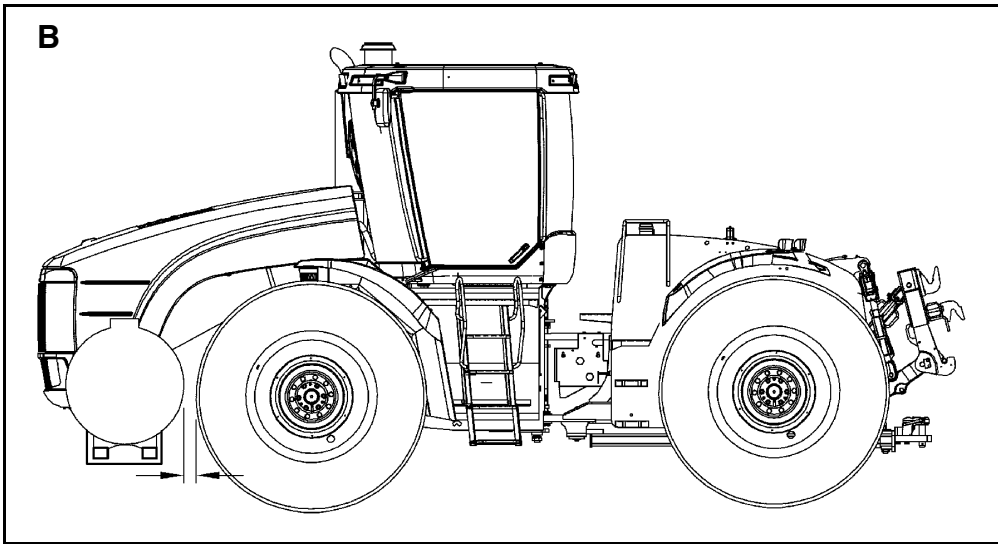
Located on the final drive housing.



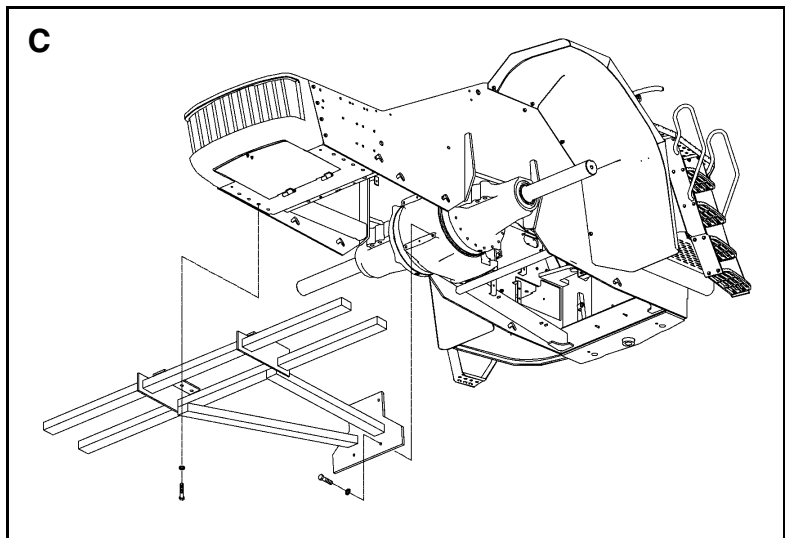
MK01G070



MA01G029



MA01G028



MA01G030

CHEMICAL TANK MOUNTING



WARNING: ADDITIONAL CARE MUST BE TAKEN WHEN OPERATING A TRACTOR WITH CHEMICAL TANKS. OPERATING, HANDLING AND BRAKING PERFORMANCE OF THE TRACTOR MAY BE AFFECTED. AVOID HIGH SPEED OPERATION. TRAVEL SPEED SHOULD BE SUCH THAT COMPLETE CONTROL AND MACHINE STABILITY IS MAINTAINED AT ALL TIMES.

M418

Chemical tanks and mounting are not factory supplied. Chemical tanks can be mounted on each front side of the tractor. The maximum tank capacity for side mounted installation is two 350 gallon (1326 liter) tanks.

To avoid structural damage, vendor supplied chemical tanks must be installed according to the following instructions:

1. Side mounted chemical tanks must be mounted in pairs with a rigid structure supporting both tanks (A). Side tanks must be interconnected so that the fluid level is the same in both tanks at all times.
2. Chemical tanks must be mounted as close to the front axle as possible. Front wheel tread setting is not affected by side tank installation, however the shape and/or size of the tanks can be affected by the required 100 mm (4 inch) minimum clearance in front of the tires (B).
3. The tank support structure must be attached to the front frame belly pan in the same location as the front suitcase weight support frame using class 10.9 fasteners (C).

IMPORTANT: *The tanks MUST NOT be individually supported by the tractor side frames.*

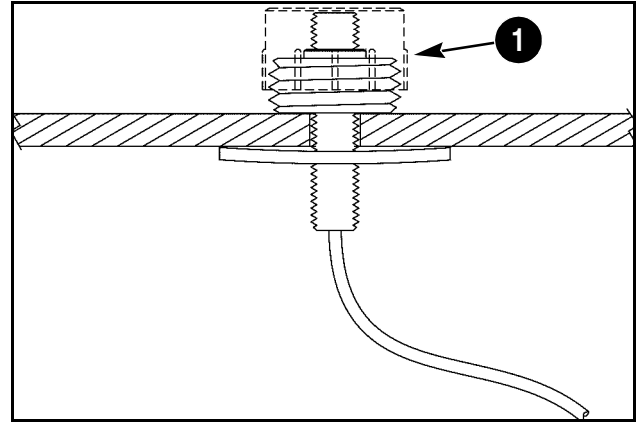
4. To reduce the dynamic forces associated with chemical tanks, the tank support structure must also have a rigid type brace extending from each side of the tank support structure to the front side of the front axle center housing. Use the existing pre-drilled and tapped 20 mm holes in the center housing to attach the braces using class 10.9 fasteners (C).
5. Front tanks must be mounted to allow the cleanout trap door to open and allow unrestricted access to all service points.
6. Refer to the Tire Load And Inflation Tables in this manual for the correct tire size and load capacity for your application. Tires must be inflated to the correct load capacity to support the added weight. To avoid exceeding tire load capacity, remove all front wheel weights.
7. Each U.S. gallon (3.8 liter) of tank capacity will add approximately 14 lb. (6.3 Kg) to the front axle weight and decrease rear axle weight. DO NOT exceed tire or tractor maximum operating weights.

IMPORTANT: *Tanks filled to capacity must not be used as primary ballast for heavy tillage operation.*

NOTE: *A generic chemical tank support structure is illustrated only to show acceptable attaching points. Final support structure design and testing is the responsibility of the manufacturer.*

BUSINESS BAND RADIO READY (If Equipped)

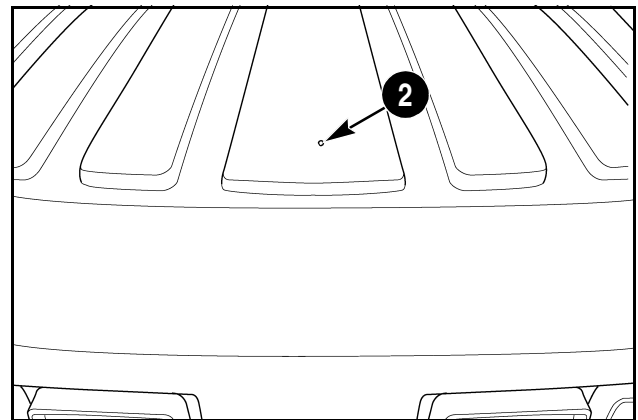
Provisions for installing business band radios have been provided for tractors equipped with the Business Band Radio Option. The antenna mast mounting threaded spud (1) and antenna lead wire (if equipped) are factory installed in the roof of the cab approximately 2 inches (50 mm) under the cab top. The spud is already wired with RF-58/U cable.



RH02H173

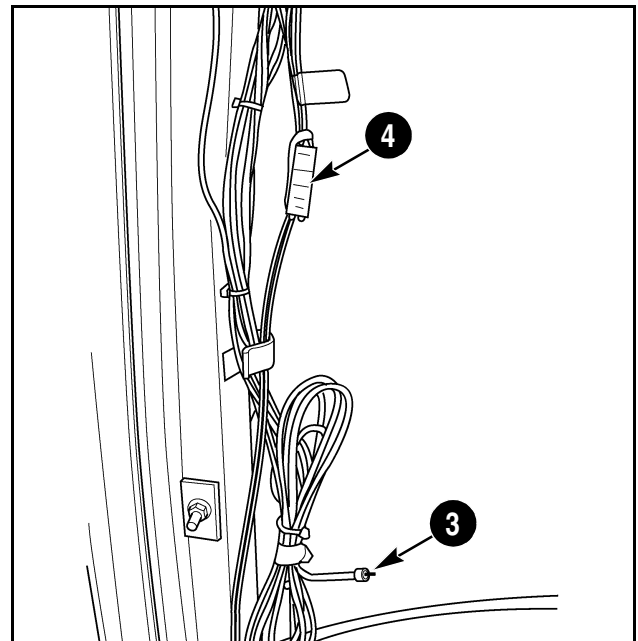
A locating dimple (2) in the cab top marks the location for drilling the hole for the antenna mast.

NOTE: The antenna mast for a one-quarter (1/4) wave UHF business band radio must be purchased locally and must be compatible with an Antenna Specialist Model K-794 low profile antenna mount. See Antenna Specialist at www.antenna.com for additional information.



MK00E007

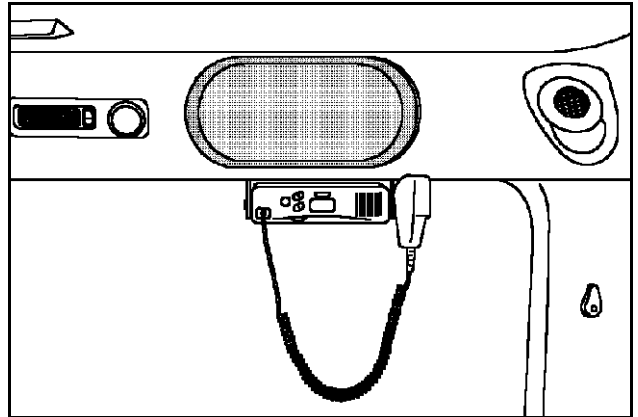
The radio antenna lead wire (if equipped) (3) and power and ground connector (4) are located under the right side rear ROPS post trim cover.



MK00E041

1-TO THE OWNER

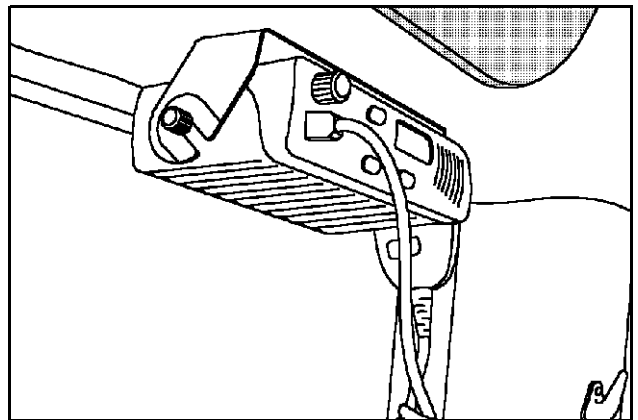
The recommended location for mounting the business band radio is under the RH stereo speaker box. The mounting bracket supplied with the radio must be used.



RI01009

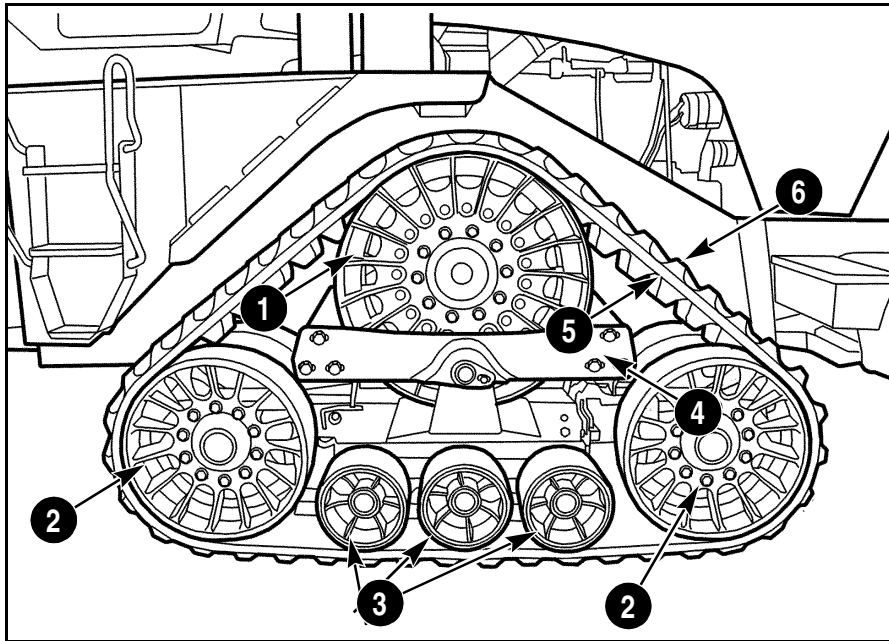
If necessary, the stereo speaker may be removed to install the radio mounting bracket.

NOTE: See your Case IH dealer for additional information and procedures for installing a business band radio if your tractor is not business band radio ready.



RI01D008

PRE-CONDITIONING NEW TRACKS (IF EQUIPPED)



MT05M014

1. DRIVE WHEEL
2. IDLER WHEEL

3. ROLLER WHEELS
4. UNDERCARRIAGE

5. BELT DRIVE LUGS
6. BELT TRACTION LUGS

TRACK AND UNDERCARRIAGE

Pre-Conditioning Rubber Tracks

New rubber tracks must be pre-conditioned BEFORE initial use and before roading the tractor on clean hard roads to reduce accelerated belt scuffing.

New tracks should be pre-conditioned with dirt or some other non-caustic particulate material. This is done by spreading a thin layer of the material over the entire undercarriage engaging surface of the belts and driving the tractor slowly for a brief time. The silica present in dirt or similar material will act as a lubricant and help the track conditioning process.

Conditioning may need to be done more than once if the tractor is roaded for extended distances.

After initial conditioning, the tractor should be operated in normal tillage operations to further condition the tracks. The track conditioning process should be closely monitored for the first 150 hours of service. After a reasonable amount of field time the drive lug contact areas will SURFACE-HARDEN and become more resistant to heat and scuffing.

If accelerated scuffing should occur with high heat on the drive lugs, see Track Alignment and Track Rotation section of this manual or contact your dealer for service.

Hard Surface Road Transporting

Long distance, hard surface roading of QUADTRAC model tractors carrying HEAVY LOADS such as; full chemical tanks, TPH mounted equipment, or loaded scrapers must be avoided whenever possible.

High speed roading for long distances with heavy loads can cause the tracks to overheat and cause severe damage.

If hard surface road transporting of heavy equipment cannot be avoided, the operator MUST reduce speed periodically during transport to allow the tracks to cool, and/or pull over and stop to check the tracks for overheating.

Track Tensioning

Mechanical track tension adjustments are not required. Tracks are automatically tensioned whenever a remote hydraulic function is performed. If track tension must be relieved for any reason, refer to Track Tension Release section of this manual. DO NOT operate a tractor with tracks that are not properly tensioned.

Buy Now



Our support email:

ebooklibonline@outlook.com