

Contents

1 GENERAL INFORMATION

Note to the Owner	1-1
Engine identification	1-3
Nameplate	1-3
Ecology and the environment	1-4
Battery	1-5
Procedure for running-in and pre-operation checks	1-6
International symbols	1-7

2 SAFETY INFORMATION

Safety rules	2-1
Roll - over protective structure (ROPS)	2-2
Safety decals - Cab models	2-3
Safety decals - Platform models	2-9
Before operating the machine	2-15
Driving the vehicle	2-16
Machine operation	2-17
PTO operation	2-18
Servicing from the machine	2-19
Diesel fuel	2-22
Air conditioner	2-23
Intended use statement	2-24

3 CONTROLS AND INSTRUMENTS

ACCESS TO OPERATOR'S PLATFORM

General check	3-1
Introduction	3-2
Cab - Overview	3-4
Platform - Overview	3-5

OPERATOR'S SEAT

Operator seat	3-6
Seat belt	3-8

FORWARD CONTROLS

Ignition switch	3-9
Performance monitor	3-9
Switch of the work lights	3-9
Multi-function handle	3-11
Windshield wiper and washer controls	3-11
Clutch pedal	3-12
FOOT THROTTLE PEDAL	3-12
Foot pedals of brake	3-12
DIFFERENTIAL LOCK PEDAL	3-13
Steering column	3-13

Switch the creeper	3-14
Switch - Auxiliary Front-Wheel Drive (AFWD)	3-14

LEFT-HAND SIDE CONTROLS

Parking brake	3-15
Power Take Off (PTO)	3-15

RIGHT-HAND SIDE CONTROLS

Switch the differential lock	3-15
Throttle by hand	3-16
Traction Auxiliary Front-Wheel Drive (AFWD)	3-16
Control levers of the hydraulic system	3-17
Control levers of the remote valves	3-17
Transmission controls	3-17

REARWARD CONTROLS

Harness routing of the monitor	3-18
--------------------------------------	------

OVERHEAD CONTROLS

Controls of the air conditioning	3-18
Radio (if equipped)	3-19

Instrument panel

Instrument panel	3-20
Gauges	3-22

4 OPERATING INSTRUCTIONS

COMMISSIONING THE UNIT

General instructions	4-1
Filling the fuel tank	4-1

STARTING THE UNIT

Starting the engine	4-3
Booster battery procedure	4-5

STOPPING THE UNIT

Stopping the engine	4-6
---------------------------	-----

MOVING THE UNIT

Machine direction - General safety recommendations for driving the machine	4-6
----------------------------------------------------------------------------------	-----

5 TRANSPORT OPERATIONS

PREPARING FOR ROAD TRANSPORT

CARRYING THE TRACTOR ON A TRANSPORTER	5-1
---------------------------------------------	-----

RECOVERY TRANSPORT

Towing the machine	5-1
--------------------------	-----

6 WORKING OPERATIONS

GENERAL INFORMATION

Traction Auxiliary Front-Wheel Drive (AFWD)	6-1
Differential lock system	6-2

TRANSMISSION

Operation - 8x2 Transmission	6-3
Operation the 16x4 transmission (when equipped)	6-4
Reverse Alarm and Light	6-5
Operation the creeper (Optional)	6-5
Decal information speeds	6-6
Travel speeds	6-6
Transmission operation 12x12 synchro command	6-8
Decal information speeds – synchro command transmission	6-9
Travel speeds – synchro command transmission	6-10

POWER TAKE OFF (PTO)

PTO operation safety rules	6-11
Power Take Off (PTO) Independent	6-12
Power Take-Off (PTO) operation Independent One Speed	6-13
Power Take-Off (PTO) operation Independent 2 speed	6-14
Interchangeable PTO shaft	6-14
Power Take-Off (PTO) operation independently 1 speed – synchro command transmission	6-15
Power Take-Off (PTO) operation independently 2 speeds – synchro command transmission	6-16

HYDRAULICS

Hydraulics	6-17
Operation in position control	6-18
Operation in sensitivity control	6-19

HYDRAULIC REMOTE CONTROL VALVES

Hydraulic remote control valves	6-20
CONNECTING REMOTE CYLINDERS	6-22
Bleeding the hydraulic system	6-25

THREE-POINT HITCH

Attach the implement on the hydraulic lift	6-26
Adjustments of the three-point hydraulic lift	6-27
Setups the telescopic stabilizer	6-29

Tractor drawbar

Attaching a trailer	6-30
Safety chain	6-30
Adjusting the drawbar sliding	6-31

WHEEL TRACK ADJUSTMENT

Front wheel tread settings	6-32
Adjustments the front axle stops	6-34
Front wheel alignment	6-36
Front wheel fenders	6-37
Rear wheel tread settings	6-38
Wheels - Type: welded (when fitted)	6-39

BALLASTING AND TIRES

Tyres and ballasting	6-40
Tractor ballasting	6-41
Tires – Recommendations	6-42
Tyres radial – Permitted pressures and loads	6-43
Tires diagonal – Permitted pressures and loads	6-45
Ballasting solid	6-47
Liquid ballast	6-49

ELECTRICAL CONNECTIONS

Auxiliary electrical outlet for towing	6-52
----------------------------------------------	------

7 MAINTENANCE

GENERAL INFORMATION

Introduction	7-1
Diesel fuel	7-2
Specifications - Biodiesel fuel	7-3
Fluids and lubricants	7-5
General instructions from the machine	7-6
Protective devices	7-7

MAINTENANCE CHART

Maintenance Chart	7-9
-------------------------	-----

WHEN THE WARNING LAMP LIGHTS

Air filter - Cleaning	7-11
-----------------------------	------

EVERY 10 HOURS OR DAILY SERVICE

Checking the engine oil level	7-13
Cleaning the radiators	7-14
Engine coolant level	7-15
Windshield washer reservoir – Check	7-16
Battery	7-16
Intake and exhaust manifolds and muffler - Cleaning	7-17
Hydrostatic steering oil level	7-17
Air conditioning filter drier – Check	7-18

FIRST 50 HOURS

Initial 50 hours	7-19
------------------------	------

EVERY 50 HOURS

Cab air filter - Cleaning	7-20
Clutch pedal free play	7-21
Tires and wheels	7-21
Grease points	7-22
Front axle grease fittings - Version without Auxiliary Front-Wheel Drive (AFWD)	7-24
Brake fluid reservoir - Check	7-26
Fuel system - Drain	7-27
Hydraulic oil level transmission - Check	7-28

EVERY 300 HOURS

Engine Oil & Filter	7-30
Fuel filters	7-31
Front Axle Oil – Check	7-32
Wheel hub - Change fluid	7-32
Frame - Check	7-33
Service brakes - Adjustment	7-34
Service brakes - Adjustment	7-34
Park brake - Adjustment	7-35
Belt - Check	7-36
Front axle grease fittings - Lubricate	7-36
Cab air filter - Replace	7-37

EVERY 600 HOURS

Engine air filter - Replace	7-39
Cab air filter - Replace	7-39
Hydraulic oil filter	7-40
Engine valve clearance – Check	7-41

EVERY 1200 HOURS OR ANNUALLY

Fuel injectors – Check	7-42
Oil reservoir - Change fluid	7-42
Hydraulic oil filter of the hydrostatic steering system	7-43
Front Axle Oil - Replace	7-43

Engine air filters - Replace	7-44
------------------------------------	------

EVERY 1200 HOURS OR EVERY 2 YEARS

Radiator - Drain fluid	7-44
------------------------------	------

GENERAL MAINTENANCE

Work lights and lights - Adjustment	7-48
Air conditioning - Check	7-48
Lamps and bulbs - Replace	7-49
Battery – Check	7-51
Fuel tank vent filter - Cleaning	7-52
Fuse and relay box - Check	7-52
Engine idle speed	7-58
Clutch pedal free play - Adjustment	7-58
Cab – Check	7-59
PROTECTING THE ELECTRONIC AND ELECTRICAL SYSTEMS DURING BATTERY CHARGING OR WELDING	7-60

STORAGE

Storing the machine	7-61
---------------------------	------

8 TROUBLESHOOTING

SYMPTOM(S)

Engine	8-1
Hydraulic System	8-2
Three-point hitch	8-3
Cab	8-3
Electrical System	8-3

9 SPECIFICATIONS

Machine overall dimensions	9-1
Weight from the machine	9-3
Fluids and lubricants	9-4
Engine	9-6
Transmission	9-6
Power take off (PTO)	9-6
Steering general specifications	9-6
Hydraulics	9-7
Three-point hitch	9-7
Brakes	9-7
Electrical system	9-7

1 - GENERAL INFORMATION

Note to the Owner

General Information

This manual has been prepared to assist you in the correct procedure for running in, driving and operating your new machine, and for its maintenance. Read this Manual carefully. Your machine is designed to be used in normal and customary agricultural applications.

If you require advice concerning your machine at any time, do not hesitate to contact your NEW HOLLAND dealer. He has factory trained personnel, genuine manufacturers' parts and the necessary equipment to carry out all your service requirements.

The specification are provided for your information and guidance. For further information concerning your machine and equipment, consult your NEW HOLLAND dealer.

All data given in this book is subject to production variations. Dimensions and weight are approximate only. The illustrations do not necessarily show machines in standard condition or imply that these features are available in all countries. For exact information about a particular machine, see your NEW HOLLAND dealer.

Your machine has been designed and built to give maximum performance, economy and ease of operation under a wide variety of operating conditions. Prior to delivery, the machine was carefully inspected, both at the factory and by your dealer, to ensure that it reaches you in optimum condition. To keep it in this condition and guarantee that its operation is problem-free, it is important that routine service procedures, as specified in the maintenance table on page 7-9, are carried out at the recommended intervals.

Operator's manual storage

The operator's manual supplied with your machine is an important source of information and should be stored safely.

The manual has been written specifically for your tractor so it is important that you make a note of the print number and issue date, which can be found on the cover. In the event the manual is lost or damaged it can be replaced with the correct version.

About this manual

This manual gives information for use of your machine, as intended and under the conditions foreseen by the manufacturer during normal operation and routine service and maintenance.

Read and understand it; keep it in good condition and always keep it in a safe place.

This manual does not contain all the information related to periodical service, converting and repairs to be carried out by NEW HOLLAND professional service personnel.

The Table of Contents page(s) are provided to have an overview of main manual's topics. A detailed alphabetic index is available at the end of this manual for locating specific items.

Normal operation

- Normal operation means the use of the machine for the purpose intended by the manufacturer by an operator familiar with the machine and the mounted or towed equipment and complying with the information for operation and safe practices, as specified by the manufacturer in this manual and by the decals on the machine and the equipment.
- Normal operation includes preparing and storing the machine, swinging components into and out of work position, adding and removing ballast, and connecting and removing accessories.
- Normal operation includes adjusting and setting up the machine and equipment, for the specific condition of the field and/or the crop.

Routine service

- Routine servicing and maintenance means activities that must be performed daily by an operator familiar with the machine's characteristics and in compliance with the routine servicing information and with safe practice, as specified by the manufacturer in this manual and by decals on the machine, in order to keep it working properly. The routine service includes activities such as filling up, cleaning, washing, topping up fluid, applying grease, and replacing consumable items such as bulbs.

Converting, periodical service and repair

- Periodic servicing means activities that must be performed at given intervals by trained personnel familiar with the machine's characteristics and in compliance with the periodic servicing information and with safe practice, as specified by the manufacturer in this manual and in other company literature, in order for the machine to keep to its expected working lifespan.
- Conversion means activities that must be performed by professional service personnel familiar with the machine's characteristics and in compliance with the conversion information, as specified by the manufacturer

in this manual, as well as with other company instructions or literature, in order to prepare the machine for a specific configuration.

- Repair means activities that must be performed by professional service personnel familiar with the machine's characteristics and in compliance with the repair information, as specified by the manufacturer in the dealer's manual, in order to restore the machine to correct working order following a fault or reduced performance.

Cleaning the machine

When using a high pressure washer, do not stand too close to the machine and avoid directing the jet at electronic components, electrical connections, breathers, seals, filler necks, etc. Never direct a cold water jet at a hot engine or exhaust.

Failure to comply with these rules will render the warranty null and void.

Safety

The pages in Section 2 list the precautions to be observed to ensure your safety and the safety of others. Read the safety precautions and follow the advice offered before operating the machine.

Spare parts

It should be pointed out that genuine parts have been examined and approved by the Company. Fitting and/or using non-genuine products could have negative effects on the design characteristics of your machine, thereby affecting its safety. The Company is not liable for any damage caused by the use of 'non-genuine' parts and accessories. Only genuine replacement parts should be used. The use of non-genuine parts may invalidate legal approvals associated with this product.

Making any modifications to the machine is prohibited, without specific written authorization from the manufacturer's After Sales Service department.

Warranty coverage

Your machine is warranted according to legal rights in your country and the contractual agreement with the selling dealer. No warranty shall, however, apply if the machine has not been used, adjusted and maintained as per the instructions given in this operator's manual.

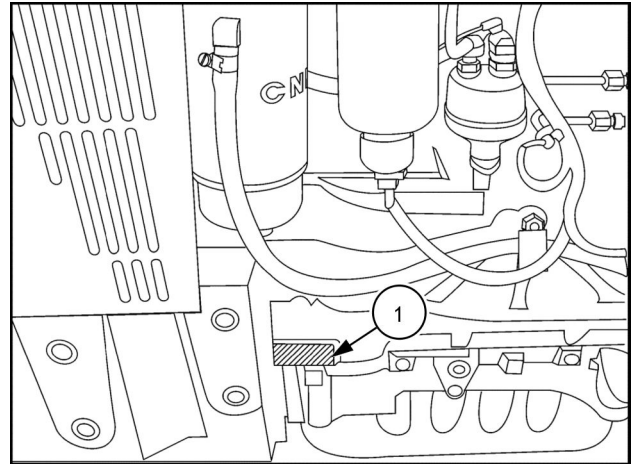
Using Biodiesel

Before using biodiesel in your machine, refer to the information on page **7-3** as regards storing and using biodiesel.

Engine identification

The engine identification code is stamped on the left-hand side of the engine. Make a note of the code in the space below.

Engine identification code: _____



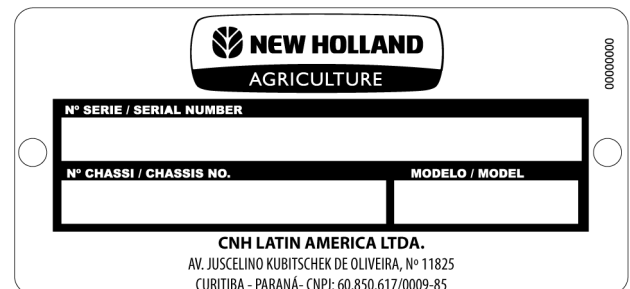
CUIL13TRO0094AA 1

Nameplate

Your machine and its main components are identified by codes. These codes facilitate identification of your machine. You must give them to your NEW HOLLAND dealer when requesting replacement parts or servicing. The following information indicates where the identification codes are stamped.

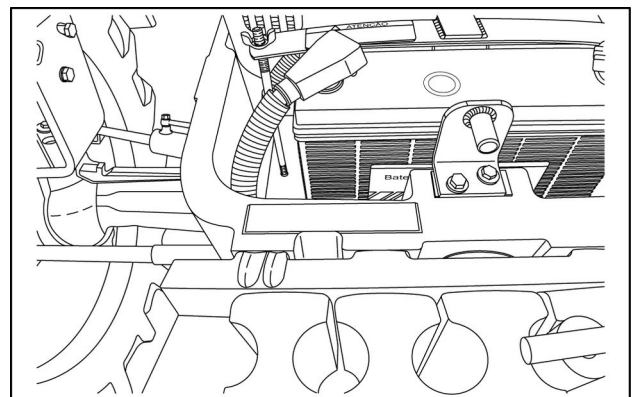
Machine identification plate

The plaque with the product identification number (PIN) is located on the inside of the right-hand side of the hood.



BRAG12TRLUE0350 1

The PIN is also stamped on the machine's front axle support bracket.



CUIL13TRO0181AA 2

Ecology and the environment

Soil, air, and water are vital factors of agriculture and life in general. Where legislation does not yet rule the treatment of some of the substances which are required by advanced technology, common sense should govern the use and disposal of products of a chemical and petrochemical nature.

The following are recommendations which may be of assistance:

- Become acquainted with and ensure that you understand the relative legislation applicable to your country.
- Where no legislation exists, obtain information from suppliers of oils, filters, batteries, fuels, antifreeze, cleaning agents, etc., with regard to their effect on man and nature and how to safely store, use and dispose of these substances. Agricultural consultants will, in many cases, be able to help you as well.

Helpful Hints

- Avoid filling tanks using unsuitable containers or inappropriate pressurized fuel delivery systems that may cause spillages.
- If you are exposed to or come in contact with hazardous chemicals you can be seriously injured. The fluids, lubricants, paints, adhesives, coolant, etc. required for the function of your machine can be hazardous. They may be attractive and harmful to domestic animals, as well as humans.
- Dispose of all fluids, filters, and containers in an environmentally-safe manner and according to local laws and regulations. Check with local environmental and recycling centers or your dealer for correct disposal information. Store fluids and filter in accordance with local laws and regulations. Use only appropriate containers for the storage of chemicals or petrochemical substances.
- Modern oils contain additives. Do not burn contaminated fuels and/ or waste oils in ordinary heating systems.
- Avoid spillage when draining off used engine coolant mixtures, engine, gear box and hydraulic oils, brake fluids, etc. Do not mix drained brake fluids or fuels with lubricants. Store them safely until they can be disposed of in a proper way to comply with local legislation and available resources.
- Modern coolant mixtures, i.e., antifreeze and other additives, should be replaced every two years. They should not be allowed to get into the soil but should be collected and disposed of safely.
- The air-conditioning system contains gases that are harmful to the environment when released into the atmosphere. Do not attempt to service or repair the system. Your dealer or air conditioning specialist has a special extractor for this purpose and will be able to recharge the system in any case.
- Repair any leaks or defects in the engine cooling or hydraulic system immediately.
- Do not increase the pressure in a pressurized circuit as this could cause the components to explode.
- Protect hoses during welding as penetrating weld splatter may burn a hole or weaken them, causing the loss of oils, coolant, etc.
- Keep out of reach of children or other unauthorized persons. Additional precautions are required for applied chemicals. Obtain complete information from the manufacturer or distributor of the chemicals before you use them.

Battery

Mandatory recycling

The battery is essentially composed of lead plates and sulfuric acid solution. Since the battery contains heavy metals such as lead, **CONAMA** Resolution 401/2008 orders that all used batteries must be returned to the battery dealer at the time of replacement. Do not dispose of the battery in the garbage. Points of sale are obliged to accept the return of your used battery, and to store it in a suitable place and return it to the manufacturer for recycling.

Improper disposal of batteries can contaminate the soil, groundwater and waterways. The consumption of contaminated water can cause high blood pressure, anemia, depression, weakness, leg pain, and drowsiness. Contact of the acid solution with eyes causes chemical conjunctivitis. Contact of the acid solution with skin causes contact dermatitis. In the case of accidental contact with the eyes or skin, immediately wash with running water and seek medical treatment.



CUIL13TRO0091AA 1

Procedure for running-in and pre-operation checks

Running-in Procedure

NOTICE: *Your new machine will have a long and reliable working life if cared for properly during the first 50-hour running-in period and if serviced at the recommended intervals.*

Avoid overloading the engine. Operating in a high gear under heavy load may cause engine overloading. Overloading occurs when the engine will not respond to a throttle increase.

Do not operate without a load on the engine. This can be as harmful to the engine as overloading. Vary the type of operation carried out so the engine is submitted to a mix of heavy and light loads during the running-in period.

Use the lower gear ratios when towing heavy loads and avoid continuous operation at constant engine speeds. Running the machine in a very low gear with a light load and high engine speed wastes fuel. You will save fuel and minimize engine wear by selecting the correct gear ratios for a particular operation.

Check the instruments and warning lights frequently and keep the radiator and oil reservoirs topped up to the recommended levels.

Pre-operation checks

Before operating the machine, ensure that you are thoroughly familiar with the location and workings of the controls.

Perform daily lubrication and maintenance operations in accordance with Section 7.

After completing daily maintenance operations, walk around the machine and visually inspect it. Special attention must be given to the following items:

- Poly 'V' belt for cracks or damage.
- Areas of the engine and exhaust where debris builds up

- Hoses, lines and fittings for leaks or damage
- Tires for damage.
- Hardware for looseness.
- Transmission and hydraulic pump assembly/filter area for leaks or debris build-up.

Make any necessary repairs before using the machine. When using the machine, pay attention to the following points:

- Always use the drawbar, the towing hook or the lower arms in the low position to do any type of towing work. Never tow from any other part of the machine because it could become detached.
- When driving on public roads, always remember other road users. Keep to the right to allow faster traffic to get past.
- Use low beam when you meet any other vehicle at night. Keep the headlights adjusted so as not to blind the drivers of oncoming vehicles.
- When getting the unit out of a ditch, slowly apply the clutch; likewise when climbing a steep hill or overcoming any other obstacle. De-clutch quickly if the front wheels leave the ground.
- Reduce your speed before going around a corner or applying the brakes. Lock the brake pedals whenever travelling at higher speeds or on public roads. This means that both wheels will brake simultaneously in the event of an emergency stop.
- Never apply the differential lock when maneuvering.
- Take extreme precautions and avoid applying the brakes suddenly when towing heavy loads at cruising speeds.
- Towed loads that are heavier than the machine must have a brake system that guarantees safe usage. Comply with the current legislation on the matter.

International symbols

As a guide to the operation of the machine, various universal symbols have been utilized on the instruments, controls, switches, and fuse box. The symbols are shown below with an indication of their meaning.

	Heater plug for cold start		Turning signal		Power Take-Off (PTO)		Reaction control
	Alternator charging	KAM	Activated memory	N	Transmission in neutral		Accessories socket
	Fuel level		Turn signals		Creeper selection		Implement socket
	Automatic fuel shut-off		Turn signals - one trailer		Low speed selection		Percentage slip
	Engine speed (rpm x 100)		Turn signals - two trailers		High speed selection		Raising of the hydraulic lift
	Hour meter		Windscreen washer		Road speed		Rear hitch lower
	Engine oil pressure		Windscreen wash wipe		Differential lock		Hydraulic lift height threshold
	Engine coolant temperature		Heating temperature control		Rear axle oil temperature		Hydraulic lift disabled
	Coolant level		Cab recirculation fan		Transmission oil pressure		Transmission filters and hydraulic filters
	Machine lights		Air conditioner		Auxiliary Front Wheel Drive (AFWD) operated		Remote control valve extension
	Main beam head		Air Filter Restriction		Warning!		Remote control valve command retraction
	Low beam		Parking brake		Danger warning lights		Remote control valve flotation
	Work lamps		Brake fluid level		Variable control		Malfunction! See Manual
	Stop lamp		Trailer brake		Pressurized! Open carefully		Malfunction! (alternative symbol)
	Horn		Warning! Corrosive substance		Position control		Brake fluid level

Thank you so much for reading.
Please click the “Buy Now!”
button below to download the
complete manual.



After you pay.

You can download the most
perfect and complete manual in
the world immediately.

Our support email:

ebooklibonline@outlook.com