

TO THE OWNER OF A CASE IH TRACTOR

Use this manual as your guide. If you follow the instructions given in this manual, your Case IH tractor will work well for many years.

Your Dealer can give you assistance with CASE CORPORATION made parts and persons with special training that know the best methods of repair and maintenance for your tractor.

Call your Dealer if you need any assistance or information.

Your Authorized Case IH Dealer



NOTE: *When you are in the tractor seat looking forward, the right hand (RH) and left hand (LH) of the tractor are the same as your right hand and left hand.*

SERIAL NUMBERS

When ordering parts or when requesting information or assistance always give the model and serial numbers of your tractor.

Write the model and serial numbers of your tractor on the lines below.

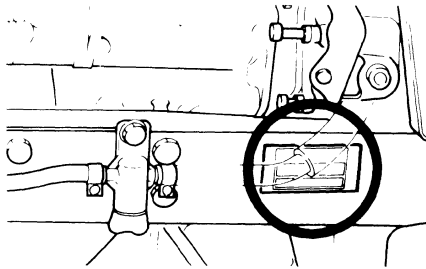
1. TRACTOR MODEL NUMBER _____

2. PRODUCT IDENTIFICATION NUMBER _____

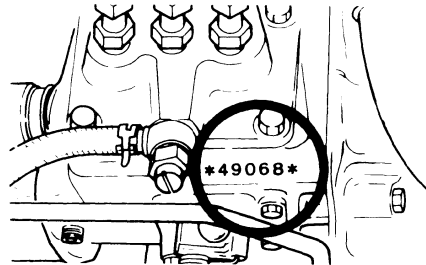
3. ENGINE SERIAL NUMBER _____

4. ROPS SERIAL NUMBER _____

TRACTOR MODEL NUMBER AND
PRODUCT IDENTIFICATION NUMBER
PLATE



ENGINE SERIAL NUMBER



ROPS PRODUCT IDENTIFICATION
NUMBER PLATE

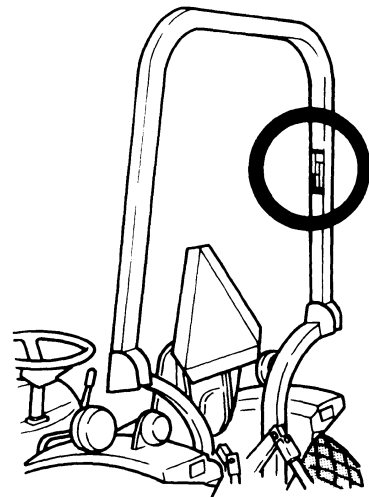


TABLE OF CONTENTS

TO THE OWNER OF A CASE IH TRACTOR	I	ROLLOVER PROTECTIVE STRUCTURE (ROPS)	58–67
SERIAL NUMBERS	II	Foldable ROPS Frame	58
TABLE OF CONTENTS	III, IV	Normal Operating Position	58
SAFETY	V–XI	Low Clearance Positions	59
Safety Rules	V	Folding the ROPS	60, 61
Decals	VI–VIII	Securing the ROPS in the Upright Position	62–66
Before Starting	VIII	Tractor Roll Over	67
Operation	IX, X	Safety Rules	67
Service	XI	ROPS Label	67
HAND SIGNALS	XII, XIII	GEAR DRIVE TRANSMISSION	68
DIESEL ENGINE SPECIFICATIONS	1, 2	Transmission Operation	68
GENERAL TRACTOR SPECIFICATIONS	3–5	HYDROSTATIC DRIVE TRANSMISSION	69
TRAVEL SPEEDS—Gear Drive	6	Transmission Operation	69
TRAVEL SPEEDS—Hydrostatic Drive	7	MECHANICAL FRONT DRIVE (MFD) (IF EQUIPPED)	70
APPROXIMATE MEASUREMENTS AND WEIGHTS	8–11	DIFFERENTIAL LOCK	71
TIRE AND WHEEL SPECIFICATION	12–14	POWER TAKEOFF (PTO)	72, 73
Tire Inflation Specifications	13, 14	Rear PTO	72
Tire Load Capacity	14	Mid PTO (If Equipped)	73
TIRE SIZE COMBINATIONS—MFD	15	POWER TAKEOFF GUARDS	74
FRONT WHEEL TREAD POSITIONS	16	PTO OPERATING SAFETY	75
REAR WHEEL TREAD POSITIONS	17, 18	DRAWBAR	76
WHEEL MOUNTING TORQUES	19	CONNECTING IMPLEMENT TO DRAWBAR	77
DIESEL FUEL SPECIFICATIONS	20, 21	SAFETY CHAIN	78
Specifications For Acceptable	20	THREE POINT HITCH SYSTEM HITCH SYSTEM ADJUSTMENTS	80, 81
Fuel Conditioner	21	Lift Links and Turnbuckle	80
INSTRUMENTS AND INDICATORS	22–24	Upper Link	81
OPERATING CONTROLS	25–45	Stabilizer Chain	81
Control Pedals	28–31	HITCH OPERATION	82, 83
Control Levers (Gear Drive)	32–35	Connect Implement to Hitch	82
Control Levers (Hydrostatic Drive)	36–39	Hitch Control Lever	82
Operators Seat	40	Disconnect Implement from Hitch	82
Amber Warning Lamps—Direction Turn Signals and SMV Emblem	41, 42	Hitch Lowering Speed Adjustment	83
Implement Warning Lamps—SMV Emblem	43	REMOTE HYDRAULIC CONTROL VALVE (IF EQUIPPED)	84
Rear Work Lamp (If Equipped)	44	HYDRAULIC ADAPTER PLATE	85
Seven Conductor Electrical Connector (If Equipped)	45	ADDING FLUID AFTER CONNECTING CYLINDERS AND HOSES	86
OPERATING INSTRUCTIONS	46, 47	FRONT WHEEL ADJUSTMENT	87–89
Run-In Procedure	46	Toe—in Adjustment	88, 89
TOWING	47	REAR WHEEL ADJUSTMENT	90, 91
HOW TO TRANSPORT TRACTOR	47	Reversing the Rear Wheels	90
BEFORE STARTING THE ENGINE	48	Installing the Extension Spacers	91
NORMAL STARTING PROCEDURE	49–52	TRACTOR BALLAST	92–94
Starting Procedure for Hydrostatic Drive Tractors	52	Front End Weights	92
STOPPING THE ENGINE	53	Rear Wheel Weights	93
COLD TEMPERATURE OPERATION	54–56	Tire Liquid Weights	94
Coolant Heater	56	LUBRICATION AND PREVENTIVE MAINTENANCE	96
SEAT BELT	57		

TABLE OF CONTENTS

LUBRICATION	97–100	CLUTCH PEDAL ADJUSTMENT	131
Engine Hourmeter	97	Service Specifications	131
Service After First 50 Hours of		NEUTRAL START SWITCH	132, 133
Operation	100	ELECTRICAL SYSTEM	134–141
HOOD	101	Head Lamps	134
ENGINE LUBRICATION	102–105	Turn Signal and Flasher Lamps	135
Service Specifications	102	Rear Red Lamp	136
Engine Oil Level	102	Instrument Panel Lamps	136
Engine Oil Change	103	Rear Work Lamp (If Equipped)	137
Engine Oil Selection	104	Fuses	138
Engine Lubrication Oil Viscosity	104	Fusible Link	139
Engine Oil Filter	105	Head Lamp Adjustment	140
TRANSMISSION & HYDRAULIC		General Service Information For	
LUBRICATION	106–109	Alternator Charging System	141
Service Specifications	106	BATTERY	142–144
Transmission Oil Level (Gear)	106	Auxiliary Battery Connections	142, 143
Transmission Oil Level (Hydro)	106	Battery Cables and Terminals	143
Transmission Oil Change	107	Removal and Installation of Battery	143
Hydraulic Filter Screen	108	When Charging the Battery	144
Hydraulic Fluid Filter (Hydro)	109	When Battery Is Not In Use	144
FRONT WHEEL BEARING LUBRICATION		ROPS EQUIPMENT	145, 146
(2WD)	110, 111	Service Specifications	145
Service Specifications	110	ROPS Inspection and Maintenance	145
FRONT AXLE LUBRICATION		Seat Belt Inspection and Maintenance	146
(MFD)	112, 113	STORING THE TRACTOR	147
Service Specifications	112	REMOVING FROM STORAGE	148
Front Axle Oil Level	112	CASE TECHNICAL MANUALS	149
Front Axle Oil Change	113		
TIRE AND RIM SERVICE	114, 115		
Service Specifications	114		
Tire Inflation Procedure	114		
Tire and Rim Repair	115		
Tire Installation	115		
COOLING SYSTEM	116–123		
Service Specifications	116		
Pressure Cooling System	116		
Cleaning The Cooling System	117		
Coolant Solution	118		
Grille Screens and Radiator Area	119		
Thermostat Check	120		
Thermostat Replacement	120, 121		
Fan Belt Adjustment	122		
Fan Belt Replacement	123		
FUEL SYSTEM	124–127		
Service Specifications	124		
Water Removal from the Filter Cup	124		
Fuel Filter Element Replacement	125		
Fuel System Air Removal	126		
Fuel Injection Pump and Nozzle Check	127		
AIR INDUCTION SYSTEM	128–130		
Service Specifications	128		
Dust Container and Air Filter Element			
Removal	129		
Element Cleaning	130		
System Inspection	130		

SAFETY

Safety Rules

Understand that your safety and the safety of other persons is measured by how you service, and operate this machine. Know the positions and operations of all controls before you try to operate. **MAKE SURE YOU CHECK ALL CONTROLS IN A SAFE AREA BEFORE STARTING YOUR WORK.**

READ THIS MANUAL COMPLETELY and make sure you understand the controls. All equipment has a limit. Make sure you understand the speed, brakes, steering, stability, and load characteristics of this machine before you start to operate.

The safety information given in this manual does not replace safety codes, insurance needs, federal, state and local laws. Make sure your machine has the correct equipment needed by the local laws and regulations.

CASE IH is continuing to work for your safety by making tractors with better protection and by giving these rules for safe operation.



THIS SAFETY ALERT SYMBOL INDICATES IMPORTANT SAFETY MESSAGES IN THIS MANUAL. WHEN YOU SEE THIS SYMBOL, CAREFULLY READ THE MESSAGE THAT FOLLOWS AND BE ALERT TO THE POSSIBILITY OF PERSONAL INJURY OR DEATH.

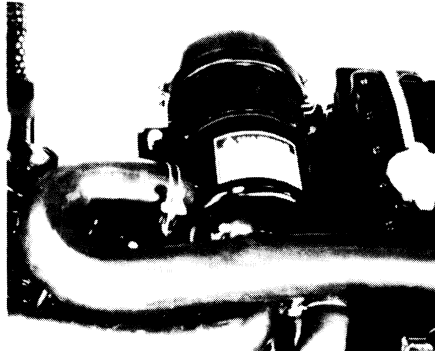
The safety decals on this machine contain instructions for your safety, and are reproduced on the following pages. Read their safety messages before operating this machine.

Additional safety messages are included throughout this manual. Read the section pertaining to your activity before you start. Refer to page locations in the **TABLE OF CONTENTS**.

Decals

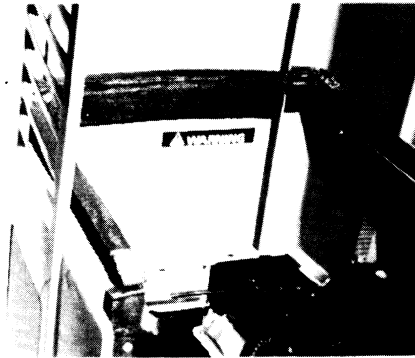
IMPORTANT: *Install new decals if the old decals are destroyed, lost, painted over or can not be read. When parts are replaced that have decals, make sure you install a new decal with each new part.*

NOTE: *New decals are available from your Case IH Dealer or write to:
Case Company
Customer Relations Department
700 State St.
Racine, Wisconsin 53404*



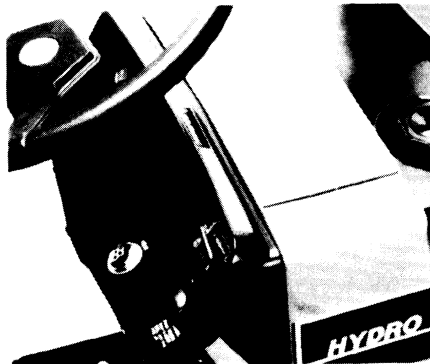
! WARNING

EXPLOSION AND INJURY CAN RESULT FROM USE OF STARTING AIDS WITH HOT GLOW PLUGS. DO NOT INJECT GASOLINE OR ETHER IN AIR INTAKE.



! WARNING

BATTERIES CONTAIN ACID AND EXPLOSIVE GAS. EXPLOSION CAN RESULT FROM SPARKS, FLAMES, OR WRONG CABLE CONNECTIONS. TO CONNECT JUMPER CABLES OR CHARGER, SEE MANUAL(S) FOR THE CORRECT PROCEDURE. FAILURE TO FOLLOW THE ABOVE INSTRUCTIONS CAN CAUSE SERIOUS PERSONAL INJURY OR DEATH.



! WARNING

PTO MACHINES MAY FAIL IF OPERATED OVER RATED SPEEDS. AVOID INJURY LIMIT RPM TO 600 OR LESS FOR 540 RPM MACHINES.



WARNING

AVOID INJURY OR DEATH

BEFORE STARTING ENGINE:

- Read operators manual for safety information and operating instructions.
- Read all tractor safety signs.
- Be sure other people are clear of tractor and equipment.
- Be sure gear shift is in neutral or park and PTO control is off.
- Start engine only from seat.
- Shields are for your protection. Keep them in place.

OPERATION:

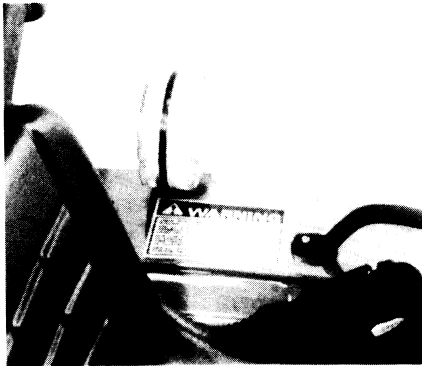
- With ROPS, always buckle and adjust seat belt.
- No riders on tractor or equipment.
- Keep hands, feet, and clothing away from power driven parts.
- For road travel, couple brake pedals, use flashing warning lamps unless prohibited by law, and keep SMV emblem visible.

TRACTORS CAN BE UPSET:

- Reduce speed on turns and rough ground. Avoid steep slopes
- Avoid rear upset. Pull only from drawbar, never higher.

WHEN TRACTOR HAS STOPPED:

- Engage park lock or brake.
- Lower implement to ground.
- Disengage PTO, stop engine, and wait for all movement to stop before servicing or clearing equipment.



WARNING

WHEN IMPROPERLY OPERATED, THIS TRACTOR CAN ROLLOVER OR UPSET

USE OF ROPS AND SEAT BELT MINIMIZE THE POSSIBILITY OF INJURY OR DEATH IF ROLLOVER OR UPSET OCCURS

FOR LOW CLEARANCE USE ONLY THE ROPS CAN BE LOWERED. NO PROTECTION IS PROVIDED IN THIS POSITION AND THE SEAT BELT SHOULD NOT BE FASTENED

FOR ALL OTHER USES SECURE ROPS IN UPRIGHT POSITION AND FASTEN SEAT BELT



! WARNING

ROTATING MACHINE PARTS

STAY CLEAR, KEEP SHIELDS INSTALLED TO HELP PROTECT FROM CLOTHING ENTANGLEMENT AND INJURY.

Before Starting



WARNING: *Before starting the engine, be sure all operating controls are in neutral. This will eliminate accidental movement of the machine or start up of power driven equipment.*



WARNING: *Engine can start with transmission in gear when neutral or safety start switch is by-passed:*

- 1. Do not connect across terminals on starter.*
 - 2. Attach booster batteries according to safe method in Operators Manual. Then use recommended starting procedure from operators seat.*
 - 3. When necessary, repair electrical system components promptly so that "jump starting" will not be attempted.*
- Machine run-away can cause injury or death to operator and bystanders.*

Operation



WARNING: *Operate controls only when seated in the Operators seat.*



WARNING: *Travel speed should be such that complete control and machine stability is maintained at all times. Where possible, avoid operating near ditches, embankments and holes. Reduce speed when turning, crossing slopes, and on rough, slick, or muddy surfaces.*



WARNING: *Tractors equipped with mechanical front drive (MFD) have increased traction and can climb steeper slopes. Stay off slopes too steep for safe operation. To prevent rear overturns, back up steeper slopes.*



CAUTION: *Do not drive on roads, or at high speed anywhere, with the differential lock engaged. Difficult steering will occur, and can result in an accident. In field operation, use the differential lock for traction improvement, but release for turning at row ends.*



WARNING: *Collision of high speed road traffic and tractors or implements can cause personal injury or death. On roads, use flasher/lights according to local laws. Keep SMV emblem visible. Pull over to let faster traffic pass. Slow down and signal before turning off.*



WARNING: *Stay off slopes too steep for safe operation. Shift down before you start up or down a hill with a heavy load. Avoid "free wheeling".*



WARNING: *A frequent cause of personal injury or death is persons falling off and being run over. Do not permit others to ride. Only one person - the operator - should be on the machine when it is in operation.*



WARNING: *PTO driven machinery can cause serious injury or death, usually due to wrapped clothing. When required by the job to be in the drive shaft area, stay clear of rotating parts. Before working on the drive shaft, or servicing or clearing the driven machine, where applicable on this tractor, put the PTO clutch lever in the DISENGAGE position, the PTO lever in the NEUTRAL or OFF, and STOP the engine.*



WARNING: *Whenever a PTO driven machine is in operation, the PTO guard must be in place for most operations to prevent injury to the operator or bystanders. Where attachments, such as pumps, are installed on the PTO shaft (especially if the tractor PTO guard is moved upward or removed) extended shielding equivalent to the PTO guard must be installed with the attachment. Install the PTO guard to its original position immediately when the attachment is removed.*



CAUTION: *Make sure that the weight of a trailed vehicle that is not equipped with brakes, NEVER EXCEEDS the weight of the machine that is towing the vehicle. Stopping distance increases with increasing speed as the weight of the towed load increases, especially on hills and slopes.*



WARNING: *Lower or block elevated implements and other attachments before servicing or when leaving the equipment.*

Service



CAUTION: *Never refuel the machine when the engine is hot or running. Never smoke while refueling.*



WARNING: *Check and service cooling system according to maintenance instructions.*

Hot coolant can spray out if radiator cap is removed. To remove radiator cap, let system cool, turn to first notch, then wait until all pressure is released. Scalding can result from fast removal of radiator cap.



WARNING: *Hydraulic oil or diesel fuel leaking under pressure can penetrate the skin and cause infection or other injury.*

To Prevent Personal injury:

Relieve all pressure, before disconnecting lines.

Before applying pressure, make sure all connections are tight and components are in good condition.

Never use your hand to check for suspected leaks under pressure. Use a piece of cardboard or wood for this purpose.

If injured by leaking fluid, see your doctor immediately.

HAND SIGNALS

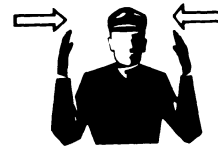
For communication under noise conditions and special operations the American Society of Agricultural Engineers has made standard agricultural hand signals. You will find that the hand signals can decrease time loss and prevent accidents.

Start the Engine



Start the engine. Move arm in a circle at belt level.

This Far To Go



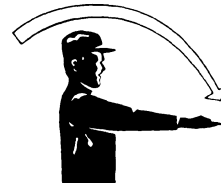
This far to go. Put your hands in front of your face with the back of your hands outward. Move your hands in or out as an indication how far to go.

Stop the Engine



Stop the engine. Move your right arm across your neck from left to right.

Move Out



Move out. Face in the needed direction of movement. Put your arm straight out behind you. Then, swing your arm over your head and forward until your arm is straight out in front of you with the back of your hand up.

Move Toward Me- Follow Me



Move toward me or follow me. Look toward person or vehicle you need to move. Hold one hand in front of you with the back of the hand toward the vehicle and move your arm from the elbow to the fingers backward and forward.

HAND SIGNALS

Come to Me



Come to me (Can also be come to me because I need assistance) Lift your arm vertically over your head with the back of your hand to the rear and turn your arm in large horizontal circles.

Raise Equipment



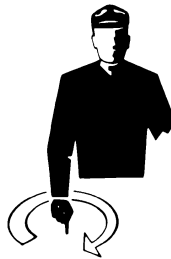
Raise equipment. Point up with one finger and at the same time, move your hand in a circle at head level.

Decrease Speed



Decrease speed. Put your arm out horizontally with the back of your hand up and then move your arm down about 45 degrees minimum many times. Keep your arm straight and do not move your arm above your shoulder.

Lower Equipment



Lower equipment. Point to the ground with one finger and at the same time, move your hand in a circle.

Increase Speed



Increase speed. Lift your hand to shoulder level with your fingers closed. Move your closed hand fully up and then return to shoulder level. Do this fast, many times.

Stop



Stop. Raise your arm fully up with the back of your hand to the rear. Keep this position until the signal is understood.

Buy Now



Our support email:

ebooklibonline@outlook.com