

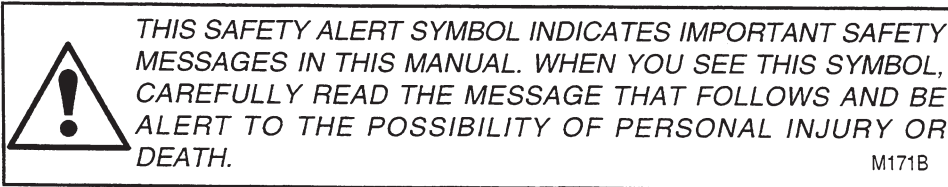
245/255 Tractor

Operators Manual

9-12471

Reprinted





IMPORTANT

If This Machine Is Used By An Employee Or Is Loaned Or Rented, Make Certain That The Operator(s), Prior To Operating:

1. Is Instructed In Safe And Proper Use.
2. Reviews And Understands The Manual(s) Pertaining To The Machine.

Safety Decals on this machine use the words **Danger**, **Warning** or **Caution**, which are defined as follows:

DANGER: Indicates an immediate hazardous situation which, if not avoided, will result in death or serious injury. The color associated with Danger is RED.

WARNING: Indicates a potentially hazardous situation which, if not avoided will result in serious injury. The color associated with Warning is ORANGE.

CAUTION: Indicates a potentially hazardous situation which, if not avoided, may result in minor or moderate injury. It may also be used to alert against unsafe practices. The color associated with Caution is YELLOW.

TO THE OWNER OF A CASE IH TRACTOR

Use this manual as your guide. If you follow the instructions given in this manual, your Case IH tractor will work well for many years.

Your Dealer can give you assistance with CASE CORPORATION made parts and persons with special training that know the best methods of repair and maintenance for your tractor.

Call your Dealer if you need any assistance or information.

Your Authorized Case IH Dealer



NOTE: When you are in the tractor seat looking forward, the right hand (RH) and left hand (LH) of the tractor are the same as your right hand and left hand.

SERIAL NUMBERS

When ordering parts or when requesting information or assistance always give the model and serial numbers of your tractor.

Write the model and serial numbers of your tractor on the lines below.

1. TRACTOR MODEL NUMBER _____

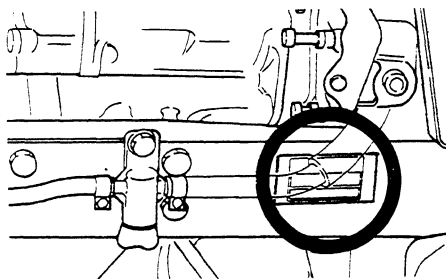
2. PRODUCT IDENTIFICATION NUMBER _____

3. ENGINE SERIAL NUMBER _____

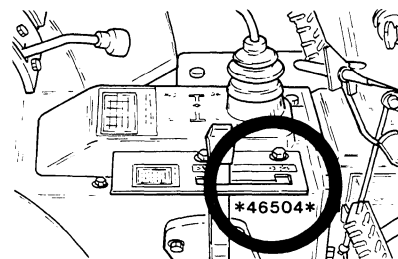
4. TRANSMISSION SERIAL NUMBER _____

5. ROPS SERIAL NUMBER _____

TRACTOR MODEL NUMBER AND
PRODUCT IDENTIFICATION NUMBER
PLATE



TRANSMISSION SERIAL NUMBER



ROPS PRODUCT IDENTIFICATION
NUMBER PLATE

ENGINE SERIAL NUMBER

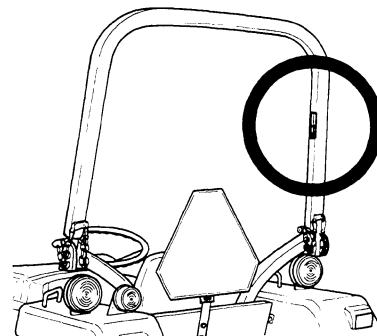
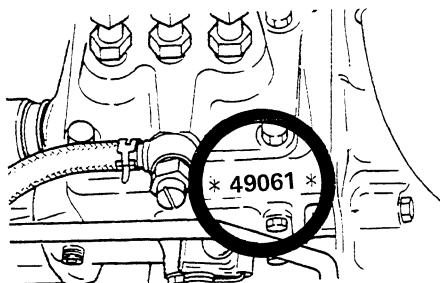


TABLE OF CONTENTS

TO THE OWNER OF A CASE IH	
TRACTOR.....	I
SERIAL NUMBER.....	II
TABLE OF CONTENTS.....	III,IV
SAFETY.....	V-XI
Safety Rules.....	V
Decals.....	VI-VIII
Before Starting.....	VIII
Operation.....	IX-XI
Service.....	XI
HAND SIGNALS.....	XII,XIII
DIESEL ENGINE	
SPECIFICATIONS.....	1,2
GENERAL TRACTOR	
SPECIFICATIONS.....	3-5
TRAVEL SPEEDS -	
245 TRACTOR.....	6
TRAVEL SPEEDS -	
255 TRACTOR.....	7
APPROXIMATE MEASUREMENTS	
AND WEIGHTS.....	8-11
ROPS Maximum Gross	
Machine Weight.....	8-11
TIRE AND WHEEL	
SPECIFICATION.....	12-14
Tire Inflation Specifications.....	13
Tire Load Capacity.....	14
TIRE SIZE COMBINATIONS	
-MFD.....	15
FRONT WHEEL TREAD	
POSITIONS.....	16-18
REAR WHEEL TREAD	
POSITIONS.....	19,20
WHEEL MOUNTING TORQUES.....	21
DIESEL FUEL SPECIFICATIONS.....	22
Specifications for Acceptable	
Number Two Diesel Fuel.....	22
Fuel Conditioner.....	22
INSTRUMENT AND	
INDICATORS.....	23-25
OPERATING CONTROLS.....	26-42
Control Pedals.....	29-31
Control Levers.....	32-36
Operators Seat.....	37
Amber Warning Lamps-Direction	
Turn Signals and SMV Emblem.....	38,39
Implement Warning Lamps	
SMV Emblem.....	40
Rear Work Lamp (If Equipped).....	41
Seven Terminal Electrical	
Outlet (If Equipped).....	42
OPERATING INSTRUCTIONS.....	43,44
Run-In Procedure.....	43
Towing.....	44
How to Transport Tractor.....	44
BEFORE STARTING THE	
ENGINE.....	45
NORMAL STARTING	
PROCEDURE.....	46-49
STOPPING THE ENGINE.....	50
COLD TEMPERATURE	
OPERATION.....	51-53
Coolant Heater.....	53
SEAT BELT.....	54
ROLL OVER PROTECTIVE	
STRUCTURE (ROPS).....	55-64
Foldable ROPS Frame.....	55
Normal Operating Position.....	55
Low Clearance Positions.....	56
Folding the ROPS.....	57,58
Securing the ROPS in the	
Upright Position.....	59-63
Tractor Roll Over.....	64
Safety Rules.....	64
ROPS Label.....	64
TRANSMISSION CONTROLS.....	65
Transmission Operation.....	65
MECHANICAL FRONT DRIVE (MFD)	
(IF EQUIPPED).....	66
DIFFERENTIAL LOCK.....	67
POWER TAKEOFF (PTO).....	68-70
Rear PTO.....	68,69
Mid PTO (If Equipped).....	70
LIVE PTO (IF EQUIPPED).....	71
POWER TAKEOFF GUARDS.....	72
PTO OPERATING SAFETY.....	73
DRAWBAR.....	74
CONNECTING IMPLEMENT	
TO DRAWBAR.....	75
SAFETY CHAIN.....	76
THREE POINT HITCH SYSTEM.....	77
HITCH SYSTEM ADJUSTMENTS.....	78,79
Lift Links and Turnbuckle.....	78
Upper Link.....	79
Stabilizer Chain.....	79
HITCH OPERATION.....	80-84
Connect Implement to Hitch.....	80
Disconnect Implement	
from Hitch.....	80
Hitch Control Lever.....	81
Draft Control Lever	
(If Equipped).....	82
Operating with Draft Control.....	83
Hitch Lowering Speed	
Adjustment.....	84

TABLE OF CONTENTS

REMOTE HYDRAULIC CONTROL		Cleaning the Cooling System.....	118
VALVE (IF EQUIPPED)	85	Cooling Solutions	119
HYDRAULIC ADAPTER PLATE	86	Grille Screens and Radiator	
ADDING FLUID AFTER CONNECTING		Area	120
CYLINDERS AND HOSES.....	87	Thermostat Check	121
FRONT WHEEL ADJUSTMENTS	83-93	Thermostat Replacement	121,122
2WD Tractor and Non-Adjustable		Fan Belt Adjustment	123
Front Axle.....	89,90	Fan Belt Replacement	124
Drag Link Adjustment.....	91	FUEL SYSTEM	125
Toe-in Adjustment	92,93	Service Specifications	125
REAR WHEEL ADJUSTMENTS.....	94,95	Water Removal from the Filter	
Tractor Equipped with		Cup	125
Adjustable Wheels.....	95	Fuel Filter Element	
TRACTOR BALLAST.....	96-98	Replacement.....	126
Front End Weights.....	96	Fuel System Air Removal	127
Rear Wheel Weights	97	Fuel Injection Pump and	
Tire Liquid Weights.....	98	Nozzle Check	128
LUBRICATION AND PREVENTIVE		AIR INDUCTION SYSTEM.....	129-131
MAINTENANCE.....	100	Service Specifications	129
LUBRICATION	101-104	Dust Container and Air Filter	
Engine Hourmeter	101	Element Removal	130
Service After First 50 Hours		Element Cleaning	131
of Operation.....	104	System Inspection	131
HOOD.....	104	CLUTCH PEDAL ADJUSTMENT	
ENGINE LUBRICATION	105-108	(WITHOUT LIVE PTO)	132-134
Service Specifications	105	Service Specifications	132
Engine Oil Level.....	105	NEUTRAL START SWITCH	135
Engine Oil Change	106	ELECTRICAL SYSTEM	136-142
Engine Oil Selection	107	Head Lamps.....	136
Engine Lubrication Oil		Turn Signal and Flasher	
Viscosity.....	107	Lamp.....	137
Engine Oil Filter	108	Rear Red Lamp	138
TRANSMISSION & HYDRAULIC		Instrument Panel Lamps	138
LUBRICATION	109,110	Rear Work Lamp (If Equipped)	139
Service Specifications	109	Fuses	140
Transmission Oil Level	109	Head Lamp Adjustment	141
Transmission Oil Change.....	109	General Service Information For	
Hydraulic Filter Screen	110	Alternator Charging System	142
FRONT WHEEL BEARING		BATTERY	143-146
LUBRICATION (2WD).....	111,112	Auxiliary Battery Connections.....	143,144
Service Specifications	111	Battery Cables and Terminals.....	144
FRONT AXLE LUBRICATION		Removal and Installation of	
(MFD)	113,114	Battery.....	145
Service Specifications	113	When Charging the Battery	145
Front Axle Oil Level	113	When Batteries Are Not In Use	146
Front Axle Oil Change.....	113	ROPS EQUIPMENT	147,148
TIRE AND RIM SERVICE.....	114,115	Service Specifications	147
Service Specifications	115	ROPS Inspection and	
Tire Inflation Procedure	115	Maintenance	147
Tire and Rim Repair	116	Seat Belt Inspection	
Tire Installation.....	116	Maintenance	148
COOLING SYSTEM	117-124	STORING THE TRACTOR.....	149,150
Service Specifications	117	REMOVING FROM STORAGE	151
Pressure Cooling System.....	117	CASE TECHNICAL MANUALS.....	152

SAFETY

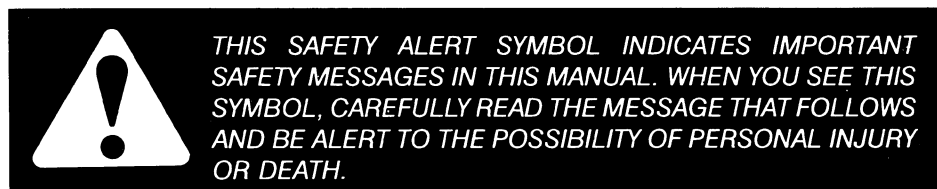
Safety Rules

Understand that your safety and the safety of other persons is measured by how you service, and operate this machine. Know the positions and operations of all controls before you try to operate. **MAKE SURE YOU CHECK ALL CONTROLS IN A SAFE AREA BEFORE STARTING YOUR WORK.**

READ THIS MANUAL COMPLETELY and make sure you understand the controls. All equipment has a limit. Make sure you understand the speed, brakes, steering, stability and load characteristics of this machine before you start to operate.

The safety information given in this manual does not replace safety codes, insurance needs, federal, state and local laws. Make sure your machine has the correct equipment needed by the local laws and regulations.

Case IH is continuing to work for your safety: by making tractors with better protection and by giving these rules for safe operation.



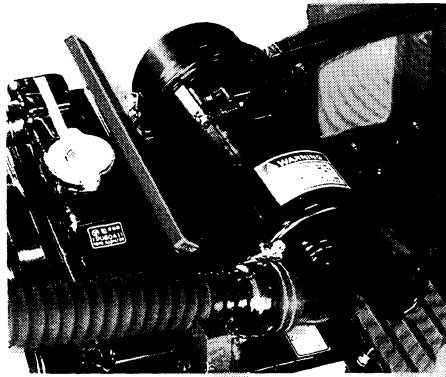
The safety decals on this machine contain instructions for your safety, and are reproduced on the following pages. Read their safety messages before operating this machine.

Additional safety messages are included throughout this manual. Read the section pertaining to your activity before you start. Refer to page locations in the **TABLE OF CONTENTS**.

Decals

IMPORTANT: *Install new decals if the old decals are destroyed, lost, painted over or cannot be read. When parts are replaced that have decals, make sure you install a new decal with each new part.*

NOTE: *New decals are available from your Case IH Dealer or write to:
Case Company
Customer Relations Department
700 State St.
Racine, Wisconsin 53404*



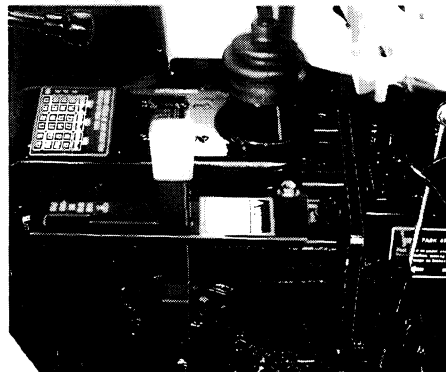
WARNING

EXPLOSION AND INJURY
CAN RESULT FROM USE
OF STARTING AIDS WITH
HOT GLOW PLUGS.
DO NOT INJECT GASOLINE
OR ETHER IN AIR INTAKE.



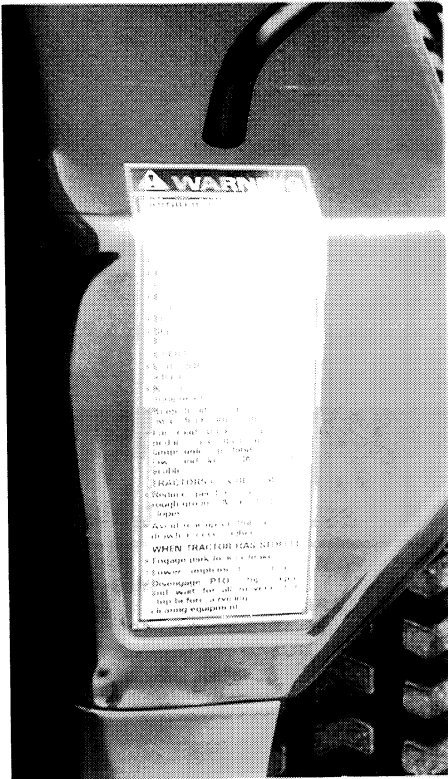
WARNING

BATTERIES CONTAIN ACID AND EXPLOSIVE
GAS. EXPLOSION CAN RESULT FROM
SPARKS, FLAMES, OR WRONG CABLE CON-
NECTIONS TO CONNECT JUMPER CABLES
OR CHARGER. SEE MANUAL(S) FOR THE
CORRECT PROCEDURE. FAILURE TO
FOLLOW THE ABOVE INSTRUCTIONS CAN
CAUSE SERIOUS PERSONAL INJURY OR
DEATH.



WARNING

MACHINE OVERSPEED
CAN CAUSE INJURY.
DO NOT RUN 540 RPM
PTO EQUIPMENT AT
1150 RPM.
TURN PLATE OVER
FOR 540 RPM.
THIS SIDE FOR MID-
MOUNTED MOWER.



WARNING

AVOID INJURY OR DEATH

BEFORE STARTING ENGINE:

- Read operators manual for safety information and operating instructions.
- Read all tractor safety signs.
- Be sure other people are clear of tractor and equipment.
- Be sure gear shift is in neutral or park and PTO control is off.
- Start engine only from seat.
- Shields are for your protection. Keep them in place.

OPERATION:

- With ROPS, always buckle and adjust seat belt.
- No riders on tractor or equipment.
- Keep hands, feet, and clothing away from power driven parts.
- For road travel, couple brake pedals, use flashing warning lamps unless prohibited by law, and keep SMV emblem visible.

TRACTORS CAN BE UPSET:

- Reduce speed on turns and rough ground. Avoid steep slopes.
- Avoid rear upset. Pull only from drawbar, never higher.

WHEN TRACTOR HAS STOPPED:

- Engage park lock or brake.
- Lower implement to ground.
- Disengage PTO, stop engine, and wait for all movement to stop before servicing or clearing equipment.



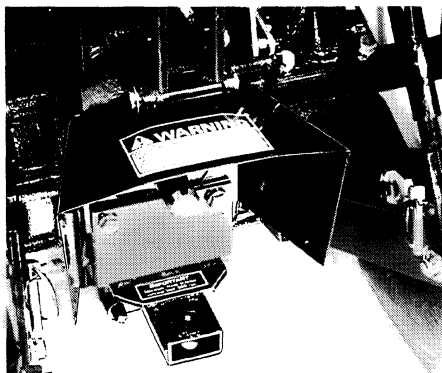
WARNING

WHEN IMPROPERLY OPERATED, THIS TRACTOR CAN ROLLOVER OR UPSET.

USE OF ROPS AND SEAT BELT MINIMIZE THE POSSIBILITY OF INJURY OR DEATH IF ROLLOVER OR UPSET OCCURS.

FOR LOW CLEARANCE USE ONLY. THE ROPS CAN BE LOWERED. NO PROTECTION IS PROVIDED IN THIS POSITION AND THE SEAT BELT SHOULD NOT BE FASTENED

FOR ALL OTHER USES, SECURE ROPS IN UPRIGHT POSITION AND FASTEN SEAT BELT



WARNING

**ROTATING MACHINE PARTS STAY CLEAR.
KEEP SHIELD IN PLACE TO PROTECT FROM CLOTHING
ENTANGLEMENT AND INJURY.**

**THIS TRACTOR HAS A SHIFTABLE-SPEED PTO.
SELECT THE TRACTOR PTO GEAR MATCHING THE PTO
MACHINE'S RATED SPEED.
MACHINE OVERSPEED CAN CAUSE INJURY.**

Before Starting



WARNING: *Before starting the engine, be sure all operating controls are in neutral. This will eliminate accidental movement of the machine or start up of power driven equipment.*



WARNING: *Engine can start with transmission in gear when neutral or safety start switch is by-passed:*

- 1. Do not connect across terminals on starter.*
- 2. Attach booster batteries according to safe method in Operators Manual. Then use recommended starting procedure from operators seat.*
- 3. When necessary, repair electrical system components promptly so that "jump starting" will not be attempted.*

Machine run-away can cause injury or death to operator and bystanders.

Operation



WARNING: *Operate controls only when seated in the Operators seat.*



WARNING: *Travel speed should be such that complete control and machine stability is maintained at all times. Where possible, avoid operating near ditches, embankments and holes. Reduce speed when turning, crossing slopes, and on rough, slick, or muddy surfaces.*



WARNING: *Tractors equipped with mechanical front drive (MFD) have increased traction and can climb steeper slopes. Stay off slopes too steep for safe operation. To prevent rear overturns, back up steeper slopes.*



CAUTION: *Do not drive on roads, or at high speed anywhere, with the differential lock engaged. Difficult steering will occur, and can result in an accident. In field operation, use the differential lock for traction improvement, but release for turning at row ends.*



WARNING: *Collision of high speed road traffic and tractors or implements can cause personal injury or death. On roads, use flasher/lights according to local laws. Keep SMV emblem visible. Pull over to let faster traffic pass. Slow down and signal before turning off.*



WARNING: *Stay off slopes too steep for safe operation. Shift down before you start up or down a hill with a heavy load. Avoid "free wheeling".*



WARNING: *A frequent cause of personal injury or death is persons falling off and being run over. Do not permit others to ride. Only one person - the operator - should be on the machine when it is in operation.*



WARNING: *PTO driven machinery can cause serious injury or death, usually due to wrapped clothing. When required by the job to be in the drive shaft area, stay clear of rotating parts. Before working on the drive shaft, or servicing or clearing the driven machine, where applicable on this tractor, put the PTO clutch lever in the DISENGAGE position, the PTO lever in the NEUTRAL or OFF, and STOP the engine.*



WARNING: *Whenever a PTO driven machine is in operation, the PTO guard must be in place for most operations to prevent injury to the operator or bystanders. Where attachments, such as pumps, are installed on the PTO shaft (especially if the tractor PTO guard is moved upward or removed) extended shielding equivalent to the PTO guard must be installed with the attachment. Install the PTO guard to its original position immediately when the attachment is removed.*



WARNING: *This tractor has a shiftable-speed PTO. Select the tractor PTO gear matching the PTO machine's rated speed. Machine overspeed can cause injury.*



CAUTION: *Make sure that the weight of a trailed vehicle that is not equipped with brakes, NEVER EXCEEDS the weight of the machine that is towing the vehicle. Stopping distance increases with increasing speed as the weight of the towed load increases, especially on hills and slopes.*



WARNING: *Lower or block elevated implements and other attachments before servicing or when leaving the equipment.*

Service



CAUTION: *Never refuel the machine when the engine is hot or running. Never smoke while refueling.*



WARNING: *Check and service cooling system according to maintenance instructions.*

Hot coolant can spray out if radiator cap is removed. To remove radiator cap, let system cool, turn to first notch, then wait until all pressure is released. Scalding can result from fast removal of radiator cap.



WARNING: *Hydraulic oil or diesel fuel leaking under pressure can penetrate the skin and cause infection or other injury.*

To Prevent Personal injury:

Relieve all pressure, before disconnecting lines.

Before applying pressure, make sure all connections are tight and components are in good condition.

Never use your hand to check for suspected leaks under pressure. Use a piece of cardboard or wood for this purpose.

If injured by leaking fluid, see your doctor immediately.



Our support email:

ebooklibonline@outlook.com