

8830 Windrower Tractor

Operators Manual

9-13483

Reprinted

CASE III



THIS SAFETY ALERT SYMBOL INDICATES IMPORTANT SAFETY MESSAGES IN THIS MANUAL. WHEN YOU SEE THIS SYMBOL, CAREFULLY READ THE MESSAGE THAT FOLLOWS AND BE ALERT TO THE POSSIBILITY OF PERSONAL INJURY OR DEATH.

IMPORTANT

If This Machine Is Used By An Employee Or Is Loaned Or Rented, Make Certain That The Operator(s), Prior To Operating:

- 1. Is Instructed In Safe And Proper Use.**
- 2. Reviews And Understands The Manual(s) Pertaining To The Machine.**

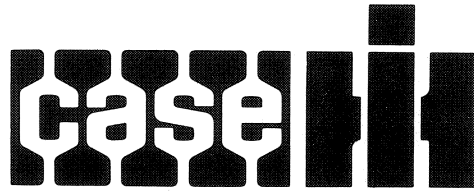


THIS SAFETY ALERT SYMBOL INDICATES IMPORTANT SAFETY MESSAGES IN THIS MANUAL. WHEN YOU SEE THIS SYMBOL, CAREFULLY READ THE MESSAGE THAT FOLLOWS AND BE ALERT TO THE POSSIBILITY OF PERSONAL INJURY OR DEATH.

IMPORTANT

If This Machine Is Used By An Employee Or Is Loaned Or Rented, Make Certain That The Operator(s), Prior To Operating:

- 1. Is Instructed In Safe And Proper Use.**
- 2. Reviews And Understands The Manual(s) Pertaining To The Machine.**



8830 Windrower Tractor



This manual applies to all 8830 Windrower Tractors and replaces any previous editions.

TO OUR CUSTOMER

We appreciate your confidence in CASE IH Farm Equipment and thank you for your patronage. In preparing this manual, we hope we have furnished you with a valuable tool for operating and maintaining this fine machine. Use this manual as your guide. Practicing the instructions given here will result in many years of dependable service from your machine.

Your Dealer can give you assistance with J I Case Company parts and specially trained personnel to assist you in repair and maintenance.

Call your Dealer if you need any assistance or information.

TABLE OF CONTENTS

Specifications	IV
Serial Number	V
Checklists	VI
Safety Precautions	1
General Information	5
Description	7
Lubrication	16
Servicing	19
Preparation	28
Operation	29
Maintenance	37
Storage	49
Extra Equipment	50
Trouble Shooting	51
Alphabetical Index	52

SPECIFICATIONS

SPECIFICATIONS

(Specifications and design are subject to change without notice and without liability therefore.)

MODEL8830

Overall length with header242"
Height, top of steering wheel94"
Height, top of cab117"
Overall width (outside of hub to outside
of hub)119.6"
Overall width
16.5L x 16.1 standard tire139"
21.5L x 16.5 flotation tire148.5"
Wheel base124"
Tread width
16.5L x 16.1 standard tire122.6"
21.5L x 16.5 flotation tire127.0"
Clearance under walking beam30.5"
Clearance under frame33.35"
Weight (approximate)
Diesel with cab and air5950 lbs
with 12 ft. auger header8740 lbs
with 14 ft. auger header8840 lbs

Tires

Drive wheelsStandard -- 16.5L x 16.1
Flotation opt. -- 21.5L x 16.5
Wheel nuts5/8-18
Torque200 LBS-ft
Rear caster wheels7.60-15 4-ply
implement type rib
Wheel bolts9/16-18
Torque110-130 LBS-ft
Tire pressureall tires -- 20 psi

Engine

Case IH 4-390 Diesel
Horsepower75 @ 2300 rpm
Displacement238 cu in (3.9 L)
Chrysler Gasoline, Model H225
Horsepower70 @ 2500 rpm
Displacement225 cu in

Cooling system22 U.S. quarts
Fan diameterGas -- 482.6 / 19.0"
Diesel -- 450 mm / 17.72"

Fuel tank capacity42 U.S. gallons
Engine oil15W40 SF CD
CapacityGas --6 U.S. quarts
Diesel -- 12 U.S. quarts

Electrical system12 volts
GroundingNegative
Battery, minimum cranking cap @ 0°F
Gas -- 12V, 300 amp
Diesel (2) -- 12 V, 450 amp

Alternator - Gas
MakeMotorola
Model8MR2026P
Amps out put72
Alternator - Diesel
MakeRobert Bosch
TypeK1-14, 23/65A
Amps out put65

Regulator - Gas
MakeMotorola
Model8AG2009A
Spark plugs - GasChampion RBL-11-Y
Mopar 556PR

Final driveRoller chain
Primary reductionNo. 50
Final reductionNo. 80
TransmissionVickers Model 19
Drive motorsVickers fixed
displacement motors

Hydraulic system
Reservoir capacity8.5 U.S. gallons
System capacity12 U.S. gallons
System fluid15W40SFCD
Main system relief pressure5000 psi

Header flotationHydraulic, adjustable from
the control console
Header lift relief pressure2000 psi
Header driveMechanical

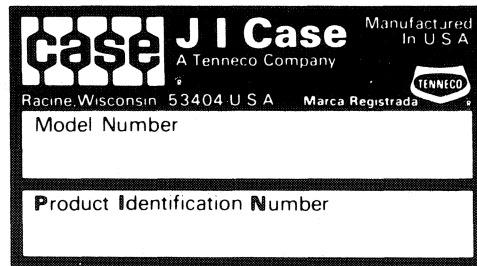
Cab

Cab glassTinted, 63 sq ft
Steering column5 position tilt
Instrument panel3 function cluster gauge,
fuel gauge, temperature gauge,
flotation pressure gauge, hour meter
Air conditioner (standard)22,000 BTU/hr
FluidFreon F-12
Capacity4 lbs / 2 kg
CompressorSankyo SD-508
Displacement8.4 cu in
Lights4 lights front, square halogen
1 light rear, square halogen
flashers on header and tractor
taillight, turn signals
Rear view mirror (left hand standard)deluxe
ControlsShape-coded handles

SERIAL NUMBERS

When parts or assistance are needed, or when writing to your Authorized Case IH Dealer, always give this information:

1. Model Number of the Machine
2. Product Identification Number



MODEL NUMBER AND PRODUCT IDENTIFICATION NUMBER PLATE

**FOR LOCATION OF THE
PRODUCT IDENTIFICATION NUMBER PLATE
ON THIS MACHINE, SEE "GENERAL INFORMATION"
SECTION IN THIS MANUAL.**

Write the serial numbers of your machine on the lines below.

MODEL NUMBER _____

PRODUCT IDENTIFICATION NUMBER _____

CHECKLISTS

DAILY CHECKLIST

The requirements of a daily checklist are satisfied by accomplishing the walk-around checkout of components listed under "Preparation".

- ___ When the windrower is transported on a road or highway at night or during the day, accessory lights and devices should be used for adequate warning to operators of other vehicles.

BEFORE EACH SEASON CHECKLIST

- ___ Remove accumulated dirt, trash, and crop material from machine.
- ___ Accomplish requirements of "Preparation" section.
- ___ Accomplish all lubrication and servicing.

- ___ Check the engine manual for pre-starting instructions for engine prepared for storage.
- ___ Fill engine radiator with coolant.
- ___ Remove any dirt or trash from radiator.
- ___ Clean primary air cleaner and replace main air cleaner element.
- ___ Replace hydraulic reservoir breather air filter.
- ___ With windrower operating in a stationary position, observe the operation of moving parts. Watch for any signs of faulty operation, overheated bearings, and listen for any unusual sounds.
- ___ Make sure the proper operating adjustments have been made for your crop.
- ___ Check for any special attachment which will help you to do a better job. See "Extra Equipment".

SAFETY PRECAUTIONS

The manufacturer of this product is concerned about your safety and is committed to the prevention of accidents. A major factor in prevention of accidents is safe and proper use of the equipment. Be sure you or anyone who operates this machine has read and understood this manual.



Look for this symbol to point out important safety precautions. It means - ATTENTION! Become alert! Your safety is involved.

Place all control levers in neutral. Engage parking brake control lever, center and lock steering wheel, and shut off engine before:

1. leaving the operator's seat
2. refueling
3. lubricating
4. cleaning the reel or hay conditioner
5. adjusting the machine

Never stand behind tractor while the header is running.

Never suddenly reverse wheels to stop or backup.

Never carry riders.

Never operate machine at high speeds in crowded places.

Never adjust, lubricate, or repair machine with engine running.

Make sure all safety shields are in place.

Emphasize and explain the importance of safety when working around and operating the machine.

Always lower header to ground when parking.

Always set parking brakes when parking.

Always travel with header as low as possible.

Always install header safety stops securely before working on or under the header. See figure SAF-1.

Always jack on solid support and block tires when raising tractor.

Always remain seated and have seat belt fastened while operating machine.

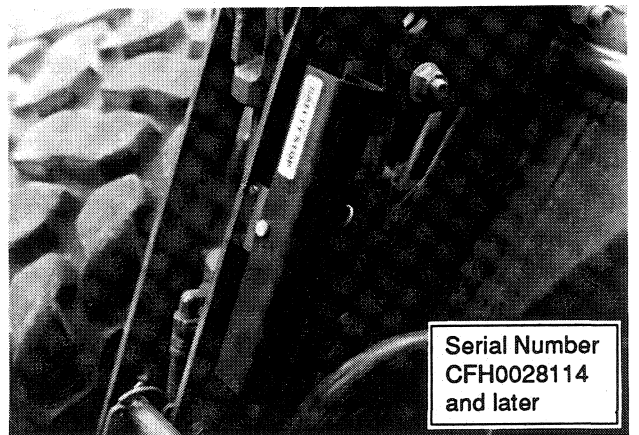
Always keep hands, feet and clothing away from moving parts.

Never remove the cap from a hot radiator; escaping steam and hot fluids can cause personal injury.

Always use ample safety warnings and adequate lights when transporting the machine on public roads. Check with your local law enforcement agencies for specific requirements.

Do not tow or drive machine with header up and safety stops in safety position.

SAFETY PRECAUTIONS



8200-86138-9

8200-87001-4

Figure SAF-1. Header Safety Stops Installed in Safety Position

Figure SAF-2. Header Safety Stops in Storage Position

DECALS

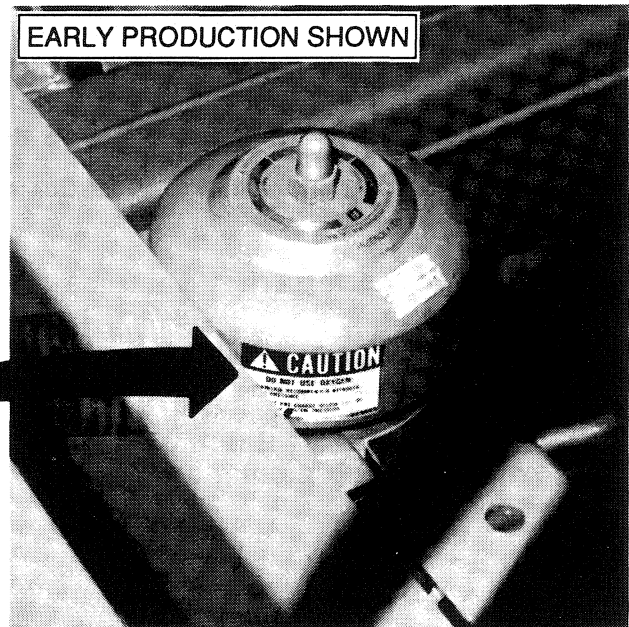
Decals with "DANGER", "CAUTION", and other information appear on your windrower for your safety. Read the information carefully, and replace the decals that become badly worn or can no longer be read. See your dealer for decal replacements.

CAUTION

DO NOT USE OXYGEN!

MAINTAIN RECOMMENDED NITROGEN GAS PRESSURE.

DO NOT PRE-CHARGE BELOW 25% OF MAXIMUM SYSTEM PRESSURE.



8200-86144-10

Figure SAF-3. Accumulator

Buy Now



Our support email:

ebooklibonline@outlook.com