

**930 Comfort King
Western Special
Wheel Tractors**

Operator's Manual

9-1611

Reprinted








THIS SAFETY ALERT SYMBOL INDICATES IMPORTANT SAFETY MESSAGES IN THIS MANUAL. WHEN YOU SEE THIS SYMBOL, CAREFULLY READ THE MESSAGE THAT FOLLOWS AND BE ALERT TO THE POSSIBILITY OF PERSONAL INJURY OR DEATH.

M171B

If Safety Decals on this machine use the words **Danger, Warning or Caution**, which are defined as follows:

- **DANGER:** Indicates an immediate hazardous situation which if not avoided, will result in death or serious injury. The color associated with Danger is RED.
- **WARNING:** Indicates an potentially hazardous situation which if not avoided, will result in serious injury. The color associated with Warning is ORANGE.
- **CAUTION:** Indicates an potentially hazardous situation which if not avoided, may result in minor or moderate injury. It may also be used to alert against unsafe practices. The color associated with Caution is YELLOW.

If Safety Decals on this machine are ISO two panel Pictorial, decals are defined as follows:

- The first panel indicates the nature of the hazard.
- The second panel indicates the appropriate avoidance of the hazard.
- Background color is YELLOW.
- Prohibition symbols such as   and  if used, are RED.



WARNING

IMPROPER OPERATION OF THIS MACHINE CAN CAUSE INJURY OR DEATH. BEFORE USING THIS MACHINE, MAKE CERTAIN THAT EVERY OPERATOR:

- Is instructed in safe and proper use of the machine.
- Reads and understands the Manual(s) pertaining to the machine.
- Reads and understands ALL Safety Decals on the machine.
- Clears the area of other persons.
- Learns and practices safe use of machine controls in a safe, clear area before operating this machine on a job site.

It is your responsibility to observe pertinent laws and regulations and follow Case Corporation instructions on machine operation and maintenance.

15-20
Operator's Instruction Manual

**930
Comfort King
Western
Special
Wheel
Tractors**



J. I. CASE. CO.

RACINE, WISCONSIN U.S.A.

NOTICE!

At the time your Case Dealer delivers your new tractor, he will acquaint you with its operation and maintenance as outlined in the "Delivery Procedure and Warranty Registration". When your Dealer has completed these instructions, he will ask you to sign the report and will then hand you a copy for your records.

NOTE: The "Delivery Procedure and Warranty Registration" also contains a record of the Pre-Delivery Checkup which your Dealer made on your tractor.

AFTER DELIVERY CHECKUP

The Authorized Case Dealer from whom you purchased your new tractor will perform the "After Delivery Checkup" outlined on the following page, if you will arrange to bring your tractor to his Service Shop within - - -

60 days after date of delivery or 200 hours of operation (whichever occurs first).

NOTE: The only charge your dealer will make for this inspection will be for oil, filters, or other accessories.

Dealer's Copy.....1 year here

Signed _____
Customer

AFTER DELIVERY CHECKUP

(Owner's Name)	(Date Checkup Performed)
(Owner's Address)	
(Dealership)	(Town)
Tractor has been operated hours	
(Tractor Model and Serial Number)	

- | | |
|--|--|
| <input type="checkbox"/> Check traction clutch
<input type="checkbox"/> Check PTO clutch.
<input type="checkbox"/> Check brakes
<input type="checkbox"/> Operate hydraulic system.
<input type="checkbox"/> Check tire pressure.
<input type="checkbox"/> Tighten cylinder head and adjust tappets.
<input type="checkbox"/> Check Fuel Injection Pump timing.
<input type="checkbox"/> Check Fuel Filtering system.
<input type="checkbox"/> Check distributor timing.
<input type="checkbox"/> Check spark plugs and distributor point gap.
<input type="checkbox"/> Check full governed no load engine speed. | <input type="checkbox"/> Tighten all bolts (including rims)
<input type="checkbox"/> Cooling system.
<input type="checkbox"/> Crankcase oil (Change oil and filter if necessary).
<input type="checkbox"/> Oil level in transmission, hydraulic and steering system
<input type="checkbox"/> Lubricate all pressure fittings and check oil levels.
<input type="checkbox"/> Check air cleaner, hoses and hose connections.
<input type="checkbox"/> Check all breathers.
<input type="checkbox"/> Check steering, bearing adjustment and front wheel toe-in.
<input type="checkbox"/> Battery starter, generator and lights.
<input type="checkbox"/> Check operation of all instruments. |
|--|--|

DEALER: Question purchaser carefully concerning his experience with tractor and answer any questions concerning maintenance or operation that are not clear to him.

Checkup.....
Performed by

Signed.....
Dealer

Original—Dealer

Duplicate—Leave in Operators Manual
for Purchaser

Signed.....
Customer

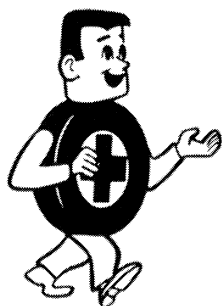
TO THE PURCHASER OF A CASE TRACTOR

The care you give your new Case Tractor will greatly determine the satisfaction and service life you will obtain from it. Use this manual as your guide. By observing the instructions and suggestions in this manual, your Case Tractor will serve you well for many years.

As an Authorized Case Dealer, we stock Genuine Case Parts, which are manufactured with the same precision and skill as the original equipment. Our factory trained staff is kept well informed on the best methods of servicing Case equipment and is ready and able to help you.

Should you require additional aid or information, contact us.

Your Authorized Case Dealer



**HI FOLKS!-I'm Sammy Safety.
Look for me to point out
important Safety Precautions**

To insure efficient and prompt service, please furnish us with the Model, Serial and Engine Numbers of your Tractor in all correspondence or contacts.



Figure 1 Left Side View of Case LP Gas Tractor

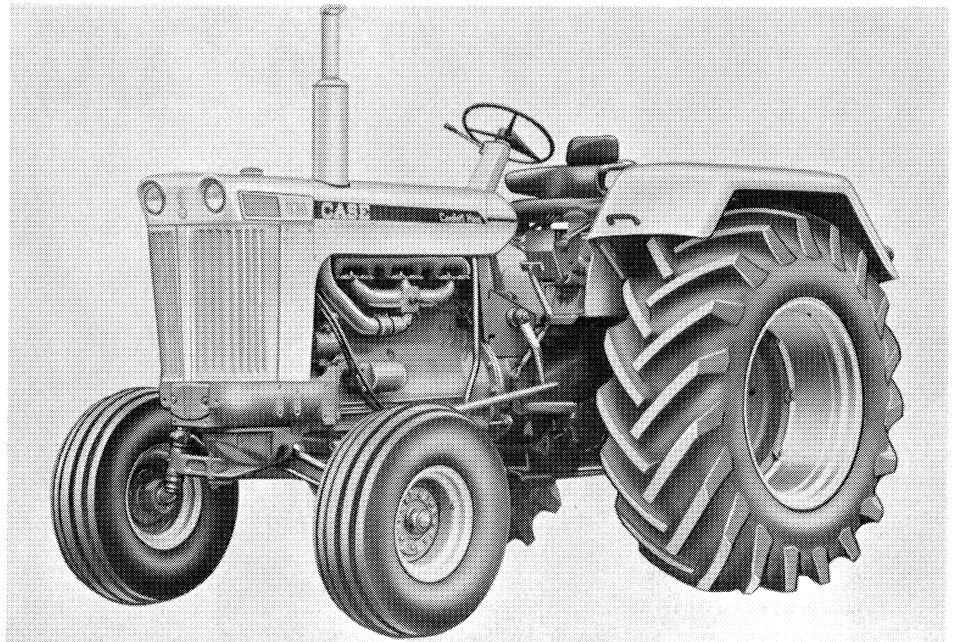


Figure 2. Left Side View of Case 930 Diesel Tractor

SERIAL NUMBER

When ordering parts from your Authorized Case Dealer and in all contacts or correspondence with your dealer relative to the Tractor, always specify the Serial, Model and Engine Numbers of your Tractor.

The Model and Serial Numbers are stamped on the number plate located on the right hand side of the instrument panel. See Figure 3. The Engine Number is stamped on a plate fastened to the right hand side of the engine on the fuel pump mounting flange, Figure 4.

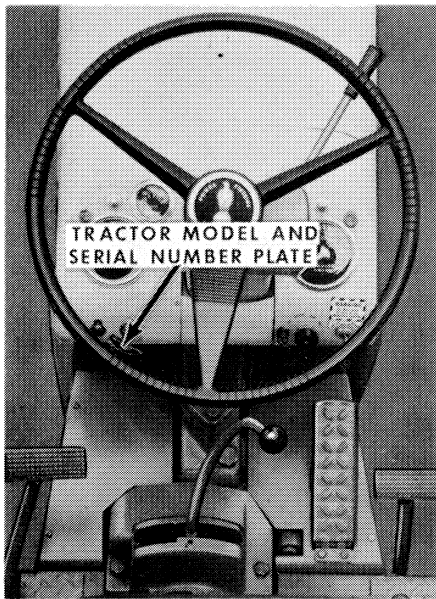


Figure 3

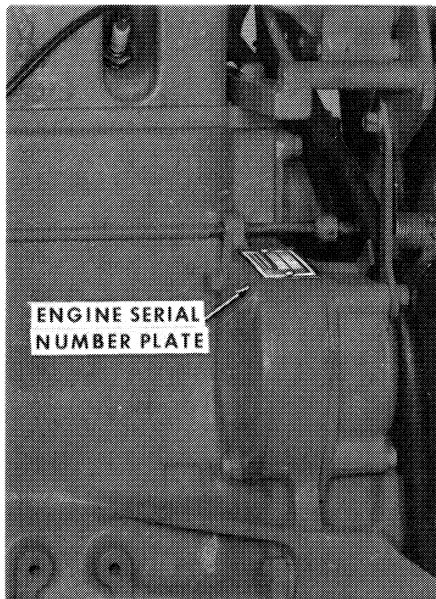


Figure 4

NOTE The terms "Right Hand" and "Left Hand" whenever used in this manual apply to the tractor when facing in the direction the tractor will move in forward operation.

For reference, fill in the Serial Number, Model Number and Engine Number of your Tractor in the spaces provided below.

Model Number _____

Engine Number _____

Serial Number _____

diesel engine



SPECIFICATIONS

General

Type ----- 6 Cylinder, 4 Stroke Cycle,
Valve-In-Head Engine.
Firing Order ----- 1-5-3-6-2-4
Bore ----- 4.125 Inches
Stroke ----- 5 Inches
Piston Displacement ----- 401 Cubic Inches
Compression Ratio ----- 15 to 1
Valve Clearance or Lash ----- Refer to Decal on Valve Cover
Early Production (Intake) ----- .012 Inches
(Exhaust) ----- .020 Inches
Late Production (Intake and Exhaust) ----- .025 Inches
Full Load Governed Engine Speed ----- 1600 RPM
No Load Governed Engine Speed ----- 1750 RPM
Engine Idling Speed ----- 600 RPM
Cylinder Sleeves ----- Removable Wet Type
Cold Weather Starting Aid ----- Electric Manifold Heater
Diesel Fuel Recommendation ----- Number 2 Diesel Fuel

Piston and Rods

Number of Compression Rings ----- 3
Number of Oil Rings ----- 1
Piston Pins ----- Full Floating Type
Type of Connecting Rod Bearings ----- Replaceable Pre-
cision Steel Back, Cop-
per Lead Alloy Liners.

Main Bearings

Number of Bearings ----- 7
Type of Main Bearings ----- Replaceable Pre-
cision Steel Back, Cop-
per Lead Alloy Liners.

Engine Lubricating System

Oil Pressure ----- 40 to 45 PSI with Engine
Warm and Operating at Full
Governed RPM.

Type System ----- Forced Circulation
 Oil Pump ----- Gear Type, Oil Screen Inlet
 Oil Filter ----- Full Flow with Replaceable
 Element.

Fuel Injection System

Fuel Tank Capacity ----- 50 Gallons
 Fuel Injection Pump ----- Robert Bosch Type
 PES (Multiple Plunger).
 Pump Timing ----- 30° Before Top Dead
 Center (Port Closing).
 Fuel Injectors ----- Robert Bosch Throttling Pintle
 Type (Opening Pressure 1950 to
 2100 PSI).
 Fuel Transfer Pump ----- Plunger Type, Integral
 Part of Injection Pump.
 Governor ----- Variable Speed, Fly-Weight
 Centrifugal Type; Integral Part
 of Injection Pump.

Fuel Filters

1st Stage ----- Replaceable Element Type
 2nd Stage ----- Replaceable Element Type
 Final 3rd Stage ----- Replaceable "Sealed Type" Filter
 Fuel Tank Breather ----- Fuel Cap
 Fuel Tank Water Trap and Drain ----- Bottom of Fuel Tank
 Fuel Tank Level Gauge ----- Located on Instrument Panel
 Fuel Pressure Warning Light ----- Located on Instrument Panel
 Indicates Condition of Fuel Filters

spark ignition engine



SPECIFICATIONS

General

Type ----- 6 Cylinder, 4 Stroke
Cycle Valve-In-Head Engine.
Firing Order ----- 1-5-3-6-2-4
Bore ----- 4 Inches
Stroke ----- 5 Inches
Piston Displacement ----- 377 Cubic Inches
Compression Ratio (LP Gas) ----- 8.5 to 1
Valve Clearance (Inlet) ----- .015 (Cold)
(Exhaust) ----- .025 (Cold)
Full Load Governed Engine Speed ----- 1600 RPM
No Load Governed Engine Speed ----- 1750 RPM
Engine Idling Speed ----- 600 RPM
Cylinder Sleeves ----- Removable Wet Type

Pistons and Rods

Number of Compression Rings ----- 3
Number of Oil Rings ----- 1
Piston Pins ----- Full Floating Type
Type of Connecting Rod Bearings ----- Replaceable Precision Steel Back, Copper Lead Alloy Liners.

Main Bearings

Number of Bearings ----- 7
Type of Main Bearings ----- Replaceable Precision Steel Back, Copper Lead Alloy Liners.

Engine Lubricating System

Oil Pressure ----- 40 to 45 PSI with
Engine Warm and Operating at Full Governed RPM.

Thank you so much for reading.
Please click the “Buy Now!”
button below to download the
complete manual.



After you pay.

You can download the most
perfect and complete manual in
the world immediately.

Our support email:

ebooklibonline@outlook.com