

930CK
Western Special
Operators Manual

9-1612

Reprinted

CASE III



This symbol means ATTENTION! BECOME ALERT! YOUR SAFETY IS INVOLVED. The message that follows the symbol contains important information about your safety. Carefully read the message. Make sure you fully understand the causes of possible injury or death.

SB001

IF THIS MACHINE IS USED BY AN EMPLOYEE, IS LOANED, OR IS RENTED, MAKE SURE THAT THE OPERATOR UNDERSTANDS THE TWO INSTRUCTIONS BELOW.

BEFORE THE OPERATOR STARTS THE ENGINE:

1. GIVE INSTRUCTIONS TO THE OPERATOR ON SAFE AND CORRECT USE OF THE MACHINE.
2. MAKE SURE THE OPERATOR READS AND UNDERSTANDS THE OPERATOR'S MANUAL FOR THIS MACHINE.



IMPROPER OPERATION OF THIS MACHINE CAN CAUSE INJURY OR DEATH.

BEFORE STARTING THE ENGINE, DO THE FOLLOWING:

1. READ THE OPERATOR'S MANUAL.
2. READ ALL SAFETY DECALS ON THE MACHINE.
3. CLEAR THE AREA OF OTHER PERSONS.

LEARN AND PRACTICE SAFE USE OF MACHINE CONTROLS IN A SAFE, CLEAR AREA BEFORE YOU OPERATE THIS MACHINE ON A JOB SITE.

It is your responsibility to observe pertinent laws and regulations and to follow manufacturer's instructions on machine operation and maintenance.

See your Authorized Case dealer for additional operator's manuals, parts catalogs, and service manuals.

TO THE PURCHASER OF A CASE TRACTOR

The care you give your new Case Tractor will greatly determine the satisfaction and service life you will obtain from it. Use this manual as your guide. By observing the instructions and suggestions in this manual, your Case Tractor will serve you well for many years.

As an Authorized Case Dealer, we stock Genuine Case Parts, which are manufactured with the same precision and skill as the original equipment. Our factory trained staff is kept well informed on the best methods of servicing Case equipment and is ready and able to help you.

Should you require additional aid or information, contact us.

Your Authorized Case Dealer

To insure efficient and prompt service, please furnish us with the Model, Serial and Engine Numbers of your Tractor in all correspondence or contacts.

SERIAL NUMBER

When ordering parts from your Authorized Case Dealer and in all contacts or correspondence with your dealer relative to the Tractor, always specify the Serial, Model and Engine Numbers of your Tractor.

The Model and Serial Numbers are stamped on the number plate located on the right hand side of the instrument panel. See Figure 3. The Engine Number is stamped on a plate fastened to the right hand side of the engine on the fuel pump mounting flange, Figure 4.

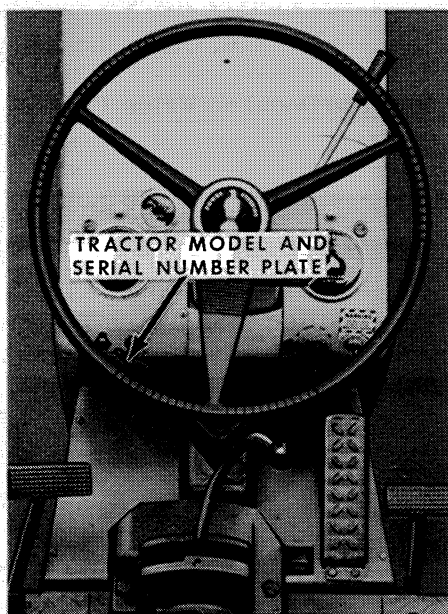


Figure 3

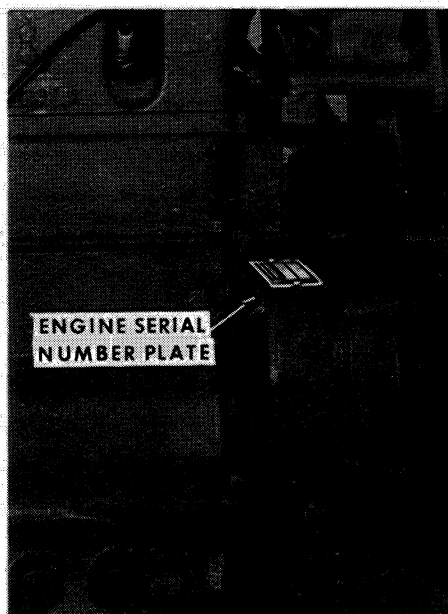


Figure 4

NOTE The terms "Right Hand" and "Left Hand" whenever used in this manual apply to the tractor when facing in the direction the tractor will move in forward operation.

For reference, fill in the Serial Number, Model Number and Engine Number of your Tractor in the spaces provided below.

Model Number _____

Engine Number _____

Serial Number _____

Type System ----- Forced Circulation
 Oil Pump ----- Gear Type, Oil Screen Inlet
 Oil Filter ----- Full Flow with Replaceable
 Element.

Fuel Injection System

Fuel Tank Capacity ----- 50 Gallons
 Fuel Injection Pump ----- Robert Bosch Type
 PES (Multiple Plunger).
 Pump Timing ----- 30° Before Top Dead
 Center (Port Closing).
 Fuel Injectors ----- Robert Bosch Throttling Pintle
 Type (Opening Pressure 1950 to
 2100 PSI).
 Fuel Transfer Pump ----- Plunger Type, Integral
 Part of Injection Pump.
 Governor ----- Variable Speed, Fly-Weight
 Centrifugal Type; Integral Part
 of Injection Pump.

Fuel Filters

1st Stage ----- Replaceable Element Type
 2nd Stage ----- Replaceable Element Type
 Final 3rd Stage ----- Replaceable "Sealed Type" Filter
 Fuel Tank Breather ----- Fuel Cap
 Fuel Tank Water Trap and Drain ----- Bottom of Fuel Tank
 Fuel Tank Level Gauge ----- Located on Instrument Panel
 Fuel Pressure Warning Light ----- Located on Instrument Panel
 Indicates Condition of Fuel Filters

spark ignition engine

SPECIFICATIONS

General

Type ----- 6 Cylinder, 4 Stroke
Cycle Valve-In-Head Engine.
Firing Order ----- 1-5-3-6-2-4
Bore ----- 4 Inches
Stroke ----- 5 Inches
Piston Displacement ----- 377 Cubic Inches
Compression Ratio (LP Gas) ----- 8.5 to 1
Valve Clearance (Inlet) ----- .015 (Cold)
(Exhaust) ----- .025 (Cold)
Full Load Governed Engine Speed ----- 1600 RPM
No Load Governed Engine Speed ----- 1750 RPM
Engine Idling Speed ----- 600 RPM
Cylinder Sleeves ----- Removable Wet Type

Pistons and Rods

Number of Compression Rings ----- 3
Number of Oil Rings ----- 1
Piston Pins ----- Full Floating Type
Type of Connecting Rod Bearings ----- Replaceable Pre-
cision Steel Back, Cop-
per Lead Alloy Liners.

Main Bearings

Number of Bearings ----- 7
Type of Main Bearings ----- Replaceable Pre-
cision Steel Back, Cop-
per Lead Alloy Liners.

Engine Lubricating System

Oil Pressure ----- 40 to 45 PSI with
Engine Warm and Oper-
ating at Full Governed
RPM.

Type System ----- Forced Circulation
Oil Pump ----- Gear Type, Oil Screen Inlet
Oil Filter ----- Full Flow With Re-
placeable Element.

Fuel System

Fuel Tank Capacity ----- 48 Gallons (80% Full)
Carburetor ----- Ensign Model Kg 1
Flange ----- SAE 1-1/2 Inches
Fuel Filter ----- Replaceable Element Type
Located Near Regulator.
Fuel Gauge ----- Visual - Located on Rear of
LP Gas Tank.

Distributor Ignition

Contact Point Gap ----- .020 Inch
Dwell Angle ----- 32°
Static Timing (LP Gas) ----- TDC
Running Timing at 1600 RPM (LP Gas) ----- 24° BTC
Spark Plugs (LP Gas) ----- Prestolite 18 3 or Equivalent
Thread ----- 18 MM
Gap (LP Gas) ----- .020 Inch
Shank Length ----- 1/2 Inch

general specifications

Cooling System

Capacity ----- 10 Gallons
Type of System ----- Pressurized Thermostat
Continuous By-Pass Type; For-
ced Circulation, Impeller Type
Pump.
Radiator ----- Heavy Duty Tube and Fin Type
Thermostats ----- Starts to Open at 180° F. Fully Open at 204° F.
Pressure Cap Required ----- 7 PSI

Electrical System

Type of System ----- 12 Volts Negative Ground
Batteries (Diesel) ----- (2) 6 Volt Batteries Connected
in Series. Group 7D, 29 Plates.
(Spark Ignition) ----- (2) 6 Volt Batteries Connected
in Series. Group 4, 21 Plates.
Generator ----- 12 Volt
Voltage Regulator ----- Automatic Type
Starting Motor ----- 12 Volt
Headlights ----- 12 Volt Sealed Unit
Rear Light ----- 12 Volt Sealed Unit Combina-
tion Tail and Flood Light.
Electrical Outlet Socket ----- 12 Volt; For Auxiliary Light
Circuit Breaker ----- Protects the Electrical Sys-
tem from Overloads.

Brakes

Type ----- Heavy Duty Self-Energizing
Differential Brakes.
Brake Pedals ----- Can be Locked Together for Road
Travel or Used Individually for
Steering Assistance.

Traction Clutches

Foot Operated ----- Spring Loaded, Single Disc
Hand Traction Clutch ----- Over Center Oil Cushion
Type Single Disc.

Transmission

Transmission Case ----- Heavy Cast Iron One Piece
Unit Construction Containing
All Gears, Shafts, Bearings,
Differential and Final Drive.
Transmission ----- 6 Speeds Forward and one Reverse
Final Drive ----- Heavy Duty Roller Chain Drive
Transmission Brake ----- Actuated By Clutch Lever

Drawbar

Type ----- Full Swinging Roller Mount-
ed, Self-Locking.
Drawbar Pin Hole Size ----- With Accommodate 1-1/4
Inch Pin.
Raised Hitch ----- Provided With All PTO Equip-
ped Tractors.
Yoke Type Drawbar ----- For Hitch That Requires a
Yoke Type Drawbar.

Belt Pulley

Method of Engaging ----- Independent Hand Shift
Pulley Diameter ----- 11-3/4 Inches
Pulley Face Width ----- 8-1/4 Inches
Pulley Speed at No Load Governed
Engine Speed at 1740 RPM ----- 1100 RPM
Pulley Speed at Full Load
Governed Engine Speed of 1600 RPM ----- 1007 RPM
Pulley Speed at 600 RPM Engine
Idling Speed ----- 378 RPM
Belt Speed ----- 3100 Feet Per Minute Under Load
Ratio Engine Speed to Belt Pulley Speed ----- 1.588 to 1

Power Take Off

Rotation ----- Clockwise
PTO Shaft Speed at 1450 Engine RPM (1000 RPM Attach) - 1000 RPM
PTO Shaft Speed at 1450 Engine RPM (540 RPM Attach) --- 530 RPM
PTO Shaft Speed at 600 RPM Idle Speed (1000 RPM Attach) - 412 RPM
PTO Shaft Speed at 600 RPM Idle Speed (540 RPM Attach) - 220 RPM
Spline Size For 540 RPM PTO Attach (6 Spline) --- 1-3/8 Inch Dia.
Spline Size For 1000 RPM PTO Attach (21 Spline) -- 1-3/8 Inch Dia.

Location on Tractor ----- 3/4 Inch to Left of Tractor
Center Line.

Distance from Center of PTO (Shaft
to Top of Drawbar (Raised Hitch) ----- 16-1/2 Inches

Method of Engaging ----- PTO Clutch Hand Lever

Type of PTO Clutch ----- Oil Bath Multiple Disc, Over
Center Adjustable Type.

Hydraulic System

Pump ----- Large Volume, Spur Gear,
Continuous Running, Dual
Valve.

Type Valve Control ----- Hand Lever Operated

Coupling for Portable Cylinder ----- Case Quick Detach-
able Breakaway Type.

Oil Filter ----- Edge Wound Paper Ele-
ment; Removable for Clean-
ing.

Type System ----- Couplings Provided for 2
Portable Hydraulic Cylin-
ders (Both Double Acting).

Relief Valve Opening Pressure ----- 1200 PSI at 1500 RPM
Engine Speed.

TIRE AND WHEEL EQUIPMENT

Rear

Tire Size	Rim Size	Tread Type	Minimum Tire Pressure PSI
18.00-26 10 ply	DW 20-26	Grader	20
23.1-26 8 ply	DW 20-26	R-1	16
23.1-26 8 ply	DW 20-26	R-2-0	16
23.1-26 8 ply	DW 20-26	R-2-C	16
23.1-30 8 ply	DW 20-30 DC	R-1	16
23.1-30 8 ply	DW 20-30 DC	R-2-C	16
16.9-34 6 ply	DW 14-34 DC	R-1	16
18.4-34 6 ply	DW 14-34 DC	R-1	16
18.4-34 6 ply	DW 16-34 DC	R-2-0	16
18.4-34 6 ply	DW 16-34 DC	R-2-C	16
23.1-34 8 ply	DW 20-34 DC	R-1	16
23.1-34 8 ply	DW 20-34 DC	R-2-C	16
Front			
7.50-18 4 ply	5.50 F-18	F-1	24
7.50-18 4 ply	5.50 F-18	F-2	24
10.00-16 6 ply	WH8L-16RM	F-2	28

Keep tires inflated to recommended pressures. Check pressures at least every 60 hours of operation or once a week, whichever occurs first. Do not reduce rear tire pressure to increase traction. When plowing, increase furrow wheel tire pressure 4 PSI.

Overall Measurements

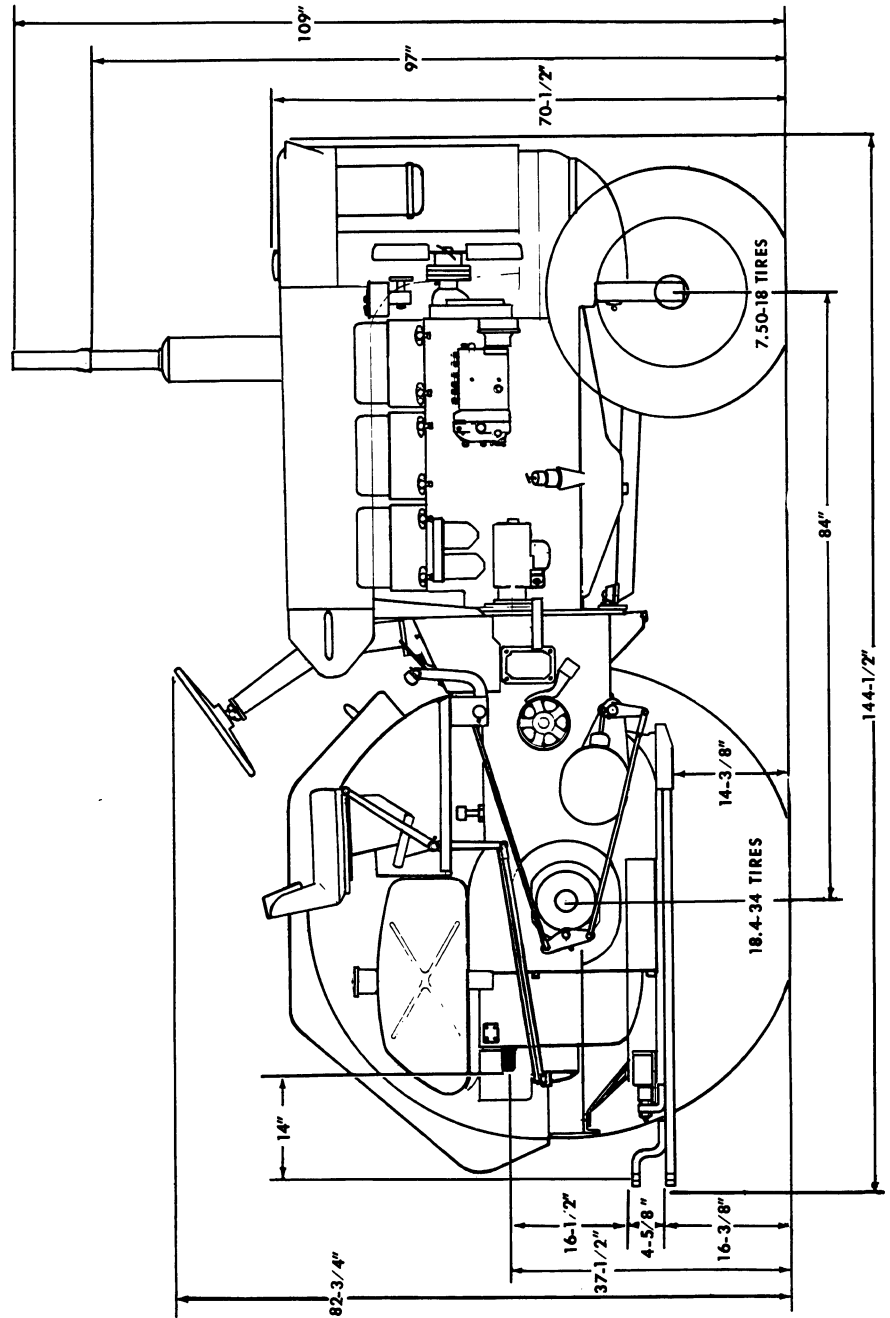


Figure 5

Buy Now



Our support email:

ebooklibonline@outlook.com