

265 Offset Tractor

Operators Manual

P.I.N. CCJ0025281 and After

9-17670

Reprinted





*This symbol means **ATTENTION! BECOME ALERT! YOUR SAFETY IS INVOLVED.** The message that follows the symbol contains important information about your safety. Carefully read the message. Make sure you fully understand the causes of possible injury or death.*

SB001

IF THIS MACHINE IS USED BY AN EMPLOYEE, IS LOANED, OR IS RENTED, MAKE SURE THAT THE OPERATOR UNDERSTANDS THE TWO INSTRUCTIONS BELOW.

BEFORE THE OPERATOR STARTS THE ENGINE:

1. GIVE INSTRUCTIONS TO THE OPERATOR ON SAFE AND CORRECT USE OF THE MACHINE.
2. MAKE SURE THE OPERATOR READS AND UNDERSTANDS THE OPERATOR'S MANUAL FOR THIS MACHINE.



WARNING

IMPROPER OPERATION OF THIS MACHINE CAN CAUSE INJURY OR DEATH.

BEFORE STARTING THE ENGINE, DO THE FOLLOWING:

1. READ THE OPERATOR'S MANUAL.
2. READ ALL SAFETY DECALS ON THE MACHINE.
3. CLEAR THE AREA OF OTHER PERSONS.

LEARN AND PRACTICE SAFE USE OF MACHINE CONTROLS IN A SAFE, CLEAR AREA BEFORE YOU OPERATE THIS MACHINE ON A JOB SITE.

It is your responsibility to observe pertinent laws and regulations and to follow manufacturer's instructions on machine operation and maintenance.

See your Authorized Case dealer for additional operator's manuals, parts catalogs, and service manuals.

TO THE OWNER OF A CASE IH TRACTOR

Use this manual as your guide. If you follow the instructions given in this manual, your Case IH tractor will work well for many years.

Your Dealer can give you assistance with Case Company made parts and persons with special training that know the best methods of repair and maintenance for your tractor.

Call your Dealer if you need any assistance or information.

Your Authorized Case IH Dealer



NOTE: *When you are in the tractor seat looking forward, the right hand (RH) and left hand (LH) of the tractor are the same as your right hand and left hand.*

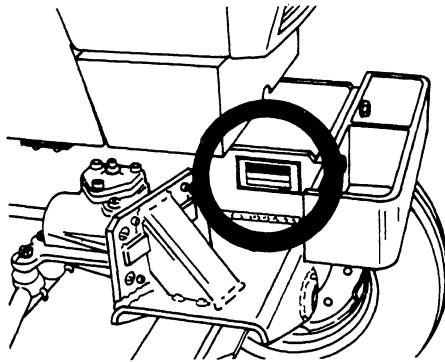
SERIAL NUMBERS

When ordering parts or when requesting information or assistance always give the model and serial numbers of your tractor.

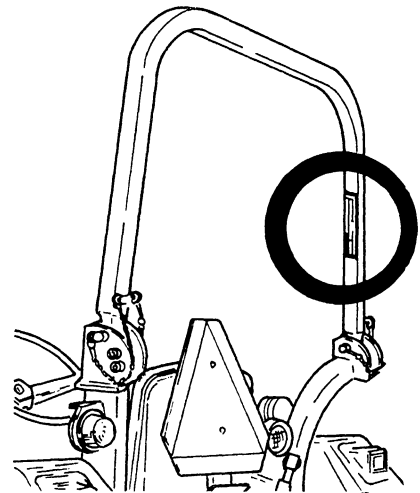
Write the model and serial numbers of your tractor on the lines below.

1. TRACTOR MODEL NUMBER _____
2. PRODUCT IDENTIFICATION NUMBER _____
3. ENGINE SERIAL NUMBER _____
4. ROPS SERIAL NUMBER _____

**TRACTOR MODEL NUMBER AND
PRODUCT IDENTIFICATION NUMBER
PLATE**



**ROPS PRODUCT IDENTIFICATION
NUMBER PLATE**



ENGINE SERIAL NUMBER

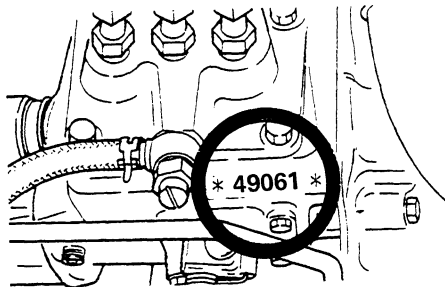


TABLE OF CONTENTS

TO THE OWNER OF A CASE IH TRACTOR.....	I	ROLL OVER PROTECTIVE	
SERIAL NUMBER.....	II	STRUCTURE (ROPS).....	51,61
TABLE OF CONTENTS.....	III,IV	Foldable ROPS Frame.....	51
SAFETY.....	V-XI	Normal Operating Position.....	51
Safety Rules.....	V	Low Clearance Positions.....	52
Decals.....	IV-VIII	Folding the ROPS.....	53,55
Before Starting.....	VIII	Securing the ROPS in the	
Operation.....	IX-X	Upright Position.....	56,60
Service.....	XI	Tractor Roll Over ..	61
HAND SIGNALS.....	XII,XIII	Safety Rules.....	61
NOTES.....	XIV	ROPS Label.....	61
DIESEL ENGINE SPECIFICATIONS.....	1,2	TRANSMISSION CONTROLS.....	62
GENERAL TRACTOR		Transmission Operation ..	62
SPECIFICATIONS.....	3-5	DIFFERENTIAL LOCK.....	63
TRAVEL SPEEDS - 265 OFFSET		POWER TAKE OFF (PTO).....	64-66
TRACTOR.....	7	Rear PTO.....	64,65
APPROXIMATE MEASUREMENTS		Mid PTO (If Equipped).....	66
AND WEIGHTS.....	8,9	LIVE PTO (IF EQUIPPED).....	67
TIRE AND WHEEL		POWER TAKEOFF GUARDS.....	68
SPECIFICATION.....	10,12	PTO OPERATING SAFETY.....	69
Tire Inflation Specifications.....	12	DRAWBAR.....	70-72
Tire Load Capacity.....	12	CONNECTING IMPLEMENT	
FRONT WHEEL TREAD POSITIONS.....	13,14	TO DRAWBAR.....	73
REAR WHEEL TREAD POSITIONS.....	15,17	SAFETY CHAIN.....	74
WHEEL MOUNTING TORQUES.....	18	THREE POINT HITCH SYSTEM.....	75
DIESEL FUEL SPECIFICATIONS.....	19	HITCH SYSTEM ADJUSTMENTS.....	76,77
Specifications for Acceptable.....	19	Lift Links and Turnbuckle.....	76
Number Two Diesel Fuel.....	19	Upper Link.....	77
Fuel Conditioner.....	19	Stabilizer Chain.....	77
INSTRUMENTS AND INDICATORS.....	20-22	HITCH OPERATION.....	78-83
OPERATING CONTROLS.....	23-34	Connect Implement to Hitch.....	78
Control Pedals.....	26-28	Disconnect Implement	
Control Levers.....	29-34	from Hitch.....	78
Operators Seat.....	34	Rear Hitch Control Lever.....	79
Amber Warning Lamps - Direction		Mid Hitch Control Lever.....	80
Turn Signals and SMV Emblem.....	35,36	Draft Control Lever	
Implement Warning Lamps		(If Equipped).....	81
SMV Emblem.....	37	Operating with Draft Control.....	82
Mid Work Lamp.....	38	Rear Hitch Lowering Speed Adjustment.....	83
Rear Work Lamp (If Equipped).....	38	REMOTE HYDRAULIC CONTROL VALVE	
Sever Conductor Electrical		(IF EQUIPPED).....	84
Connector (If Equipped).....	39	HYDRAULIC ADAPTER PLATE.....	85-87
OPERATING INSTRUCTIONS.....	40,41	ADDING FLUID AFTER CONNECTING	
Run-In Procedure.....	40	CYLINDERS AND HOSES.....	88
Towing.....	41	FRONT WHEEL ADJUSTMENTS.....	89-91
How to Transport Tractor.....	41	Front Wheel Tead Adjustment.....	90
BEFORE STARTING THE ENGINE.....	42	Toe-In Adjustment.....	91
NORMAL STARTING		REAR TREAD ADJUSTMENTS.....	92
PROCEDURE.....	43,45	TRACTOR BALLAST.....	93-96
STOPPING THE ENGINE.....	46	Front End Weights.....	93
COLD TEMPERATURE		Rear Wheel Weights.....	94
OPERATION.....	47,49	Tire Liquid Weights.....	95,96
Coolant Heater.....	49		
SEAT BELT.....	50		

TABLE OF CONTENTS (Cont'd)

LUBRICATION AND PREVENTIVE MAINTENANCE	98	AIR INDUCTION SYSTEM	126-128
LUBRICATION	99-102	Service Specifications	126
Engine Hourmeter	99	Dust Container and Air Filter	
Service After First 50 Hours of Operation	102	Element Removal	127
HOOD	102	Element Cleaning	128
ENGINE LUBRICATION	103-106	System Inspection	128
Service Specifications	103	CLUTCH CABLE ADJUSTMENT (WITH LIVE PTO)	129
Engine Oil Level	103	Service Specifications	129
Engine Oil Change	104	CLUTCH PEDAL ADJUSTMENT (WITHOUT LIVE PTO)	130-131
Engine Oil Selection	105	NEUTRAL START SWITCH	132,133
Engine Lubrication Oil Viscosity	105	ELECTRICAL SYSTEM	134-142
Engine Oil Filter	106	Head Lamps	134
TRANSMISSION AND HYDRAULIC LUBRICATION	107-109	Turn Signal and Flasher Lamp	135
Service Specifications	107	Rear Red Lamp	136
Transmission Oil Level	107	Mid Work Lamp	137
Transmission Oil Change	107,108	Fuses	139
Hydraulic Filter	109	Fusible Link	140
FRONT WHEEL BEARING LUBRICATION	110	Head Lamp Adjustment	143
Service Specifications	110,111	General Service Information For Alternator Charging System	142
TIRE AND RIM SERVICE	112,113	BATTERY	143
Service Specifications	112	Access to Battery	143
Tire Inflation Procedure	112	Auxiliary Battery Connections	144,145
Tire and Rim Repair	113	Battery Cables and Terminals	145
Tire Installation	113	Removal and Installation of Battery	146
COOLING SYSTEM	114-116	When Charging the Battery	146
Service Specifications	114	When Battery is Not in Use	147
Pressure Cooling System	114	ROPS EQUIPMENT	148-149
Cleaning the Cooling System	115	Service Specifications	148
Coolant Solutions	116	ROPS Inspection and Maintenance	148
COOLING SYSTEM	116-121	Seat Belt Inspection and Maintenance	149
Coolant Solutions	116	STORING THE TRACTOR	150
Grille Screen and Radiator Area	117	REMOVING FROM STORAGE	151
Thermostat Check	118	CASE TECHNICAL MANUALS	152
Thermostat Replacement	118,119		
Fan Belt Adjustment	120		
Fan Belt Replacement	121		
FUEL SYSTEM	122-125		
Service Specifications	122		
Water Removal from the Filter Cup	122		
Fuel Filter Element Replacement	123		
Fuel System Air Removal	124		
Fuel Injection Pump and Nozzle Check	125		

SAFETY

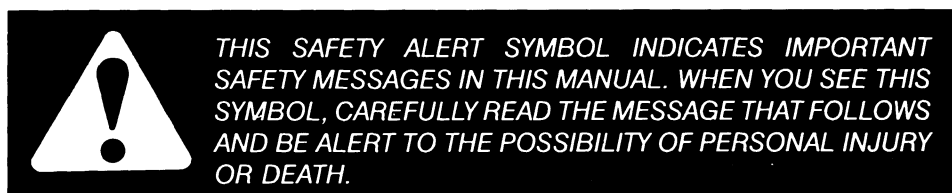
Safety Rules

Understand that your safety and the safety of other persons is measured by how you service, and operate this machine. Know the positions and operations of all controls before you try to operate. **MAKE SURE YOU CHECK ALL CONTROLS IN A SAFE AREA BEFORE STARTING YOUR WORK.**

READ THIS MANUAL COMPLETELY and make sure you understand the controls. All equipment has a limit. Make sure you understand the speed, brakes, steering, stability and load characteristics of this machine before you start to operate.

The safety information given in this manual does not replace safety codes, insurance needs, federal, state and local laws. Make sure your machine has the correct equipment needed by the local laws and regulations.

CASE IH is continuing to work for your safety by making tractors with better protection and by giving these rules for safe operation.



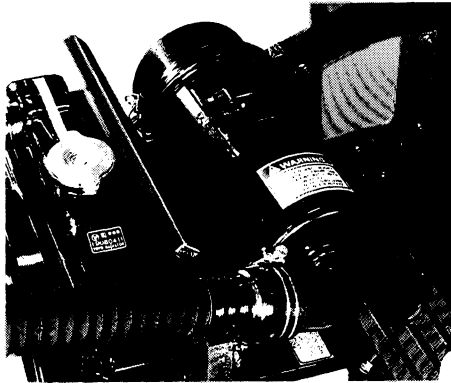
The safety decals on this machine contain instructions for your safety, and are reproduced on the following pages. Read their safety messages before operating this machine.

Additional safety messages are included throughout this manual. Read the section pertaining to your activity before you start. Refer to page locations in the TABLE OF CONTENTS.

Decals

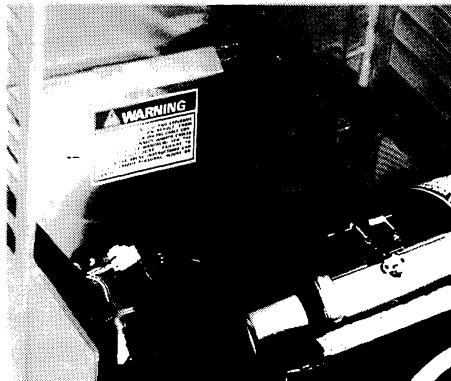
IMPORTANT: *Install new decals if the old decals are destroyed, lost painted over or can not be read. When parts are replaced that have decals, make sure you install a new decal with each new part.*

NOTE: *New decals are available from your CASE IH Dealer or write to:*
Case Company
Customer Relations Department
700 State St.
Racine, Wisconsin 53404



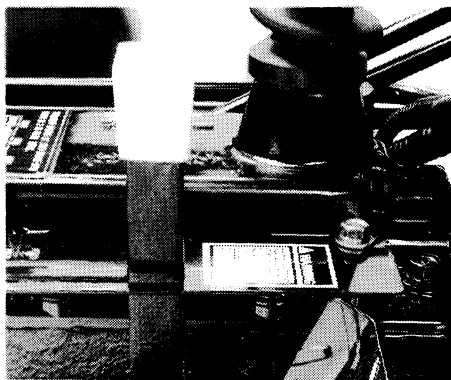
WARNING

EXPLOSION AND INJURY
CAN RESULT FROM USE
OF STARTING AIDS WITH
HOT GLOW PLUGS.
DO NOT INJECT GASOLINE
OR ETHER IN AIR INTAKE.



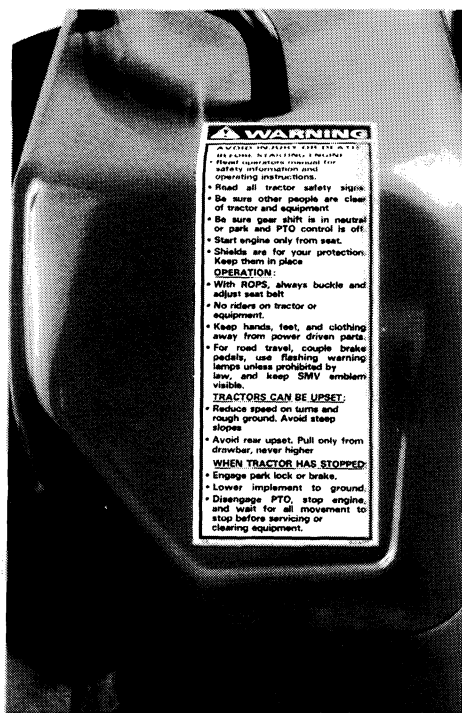
WARNING

BATTERIES CONTAIN ACID AND EXPLOSIVE
GAS. EXPLOSION CAN RESULT FROM
SPARKS, FLAMES, OR WRONG CABLE CON-
NECTIONS. TO CONNECT JUMPER CABLES
OR CHARGER, SEE MANUAL(S) FOR THE
CORRECT PROCEDURE. FAILURE TO
FOLLOW THE ABOVE INSTRUCTIONS CAN
CAUSE SERIOUS PERSONAL INJURY OR
DEATH



WARNING

MACHINE OVERSPEED
CAN CAUSE INJURY.
DO NOT RUN 540 RPM
PTO EQUIPMENT AT
1150 RPM.
TURN PLATE OVER
FOR 540 RPM.
THIS SIDE FOR MID-
MOUNTED MOWER.



WARNING

AVOID INJURY OR DEATH

BEFORE STARTING ENGINE:

- Read operators manual for safety information and operating instructions.
- Read all tractor safety signs.
- Be sure other people are clear of tractor and equipment.
- Be sure gear shift is in neutral or park and PTO control is off.
- Start engine only from seat.
- Shields are for your protection. Keep them in place.

OPERATION:

- With ROPS, always buckle and adjust seat belt.
- No riders on tractor or equipment.
- Keep hands, feet, and clothing away from power driven parts.
- For road travel, couple brake pedals, use flashing warning lamps unless prohibited by law, and keep SMV emblem visible.

TRACTORS CAN BE UPSET:

- Reduce speed on turns and rough ground. Avoid steep slopes.
- Avoid rear upset. Pull only from drawbar, never higher.

WHEN TRACTOR HAS STOPPED:

- Engage park lock or brake.
- Lower implement to ground.
- Disengage PTO, stop engine, and wait for all movement to stop before servicing or clearing equipment.

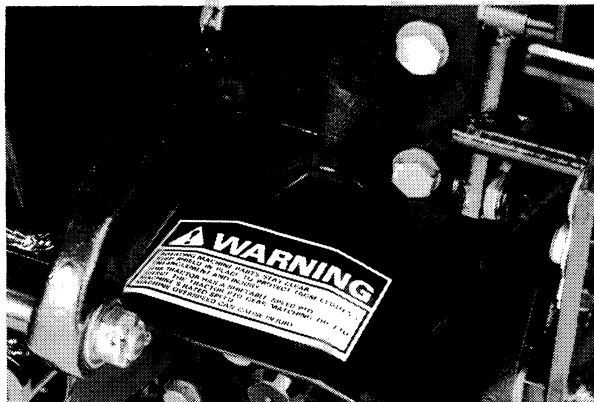
WARNING

WHEN IMPROPERLY OPERATED, THIS TRACTOR CAN ROLLOVER OR UPSET.

USE OF ROPS AND SEAT BELT MINIMIZE THE POSSIBILITY OF INJURY OR DEATH IF ROLLOVER OR UPSET OCCURS.

FOR LOW CLEARANCE USE ONLY, THE ROPS CAN BE LOWERED. NO PROTECTION IS PROVIDED IN THIS POSITION AND THE SEAT BELT SHOULD NOT BE FASTENED.

FOR ALL OTHER USES, SECURE ROPS IN UPRIGHT POSITION AND FASTEN SEAT BELT.



WARNING

**ROTATING MACHINE PARTS-STAY CLEAR.
KEEP SHIELD IN PLACE TO PROTECT FROM CLOTHING
ENTANGLEMENT AND INJURY.**
**THIS TRACTOR HAS A SHIFTABLE-SPEED PTO.
SELECT THE TRACTOR PTO GEAR MATCHING THE PTO
MACHINE'S RATED SPEED.
MACHINE OVERSPEED CAN CAUSE INJURY.**

Before Starting



WARNING: *Before starting the engine, be sure all operating controls are in neutral. This will eliminate accidental movement of the machine or start up of power driven equipment.*



WARNING: *Engine can start with transmission in gear when neutral or safety start switch is by-passed:*

- 1. Do not connect across terminals on starter.*
 - 2. Attach booster batteries according to safe method in Operators Manual. Then use recommended starting procedure from operators seat.*
 - 3. When necessary, repair electrical system components promptly so that "jump starting" will not be attempted.*
- Machine run-away can cause injury or death to operator and bystanders.*

Operation



WARNING: *Operate controls only when seated in the Operators seat.*



WARNING: *Travel speed should be such that complete control and machine stability is maintained at all times. Where possible, avoid operating near ditches, embankments and holes. Reduce speed when turning, crossing slopes, and on rough, slick, or muddy surfaces.*



CAUTION: *Do not drive on roads, or at high speed anywhere, with the differential lock engaged. Difficult steering will occur, and can result in an accident. In field operation, use the differential lock for traction improvement, but release for turning at row ends.*



WARNING: *Collision of high speed road traffic and tractors or implements can cause personal injury or death. On roads, use flasher/lights according to local laws. Keep SMV emblem visible. Pull over to let faster traffic pass. Slow down and signal before turning off.*



WARNING: *Stay off slopes too steep for safe operation. Shift down before you start up or down a hill with a heavy load. Avoid "free wheeling".*



WARNING: *A frequent cause of personal injury or death is persons falling off and being run over. Do not permit others to ride. Only one person - the operator - should be on the machine when it is in operation.*



WARNING: *PTO driven machinery can cause serious injury or death, usually due to wrapped clothing. When required by the job to be in the drive shaft area, stay clear of rotating parts. Before working on the drive shaft, or servicing or clearing the driven machine, where applicable on this tractor, put the PTO clutch lever in the DISENGAGE position, the PTO lever in the NEUTRAL or OFF, and STOP the engine.*



WARNING: *Whenever a PTO driven machine is in operation, the PTO guard must be in place for most operations to prevent injury to the operator or bystanders. Where attachments, such as pumps, are installed on the PTO shaft (especially if the tractor PTO guard is moved upward or removed) extended shielding equivalent to the PTO guard must be installed with the attachment. Install the PTO guard to its original position immediately when the attachment is removed.*



WARNING: *This tractor has a shiftable-speed PTO. Select the tractor PTO gear matching the PTO machine's rated speed. Machine overspeed can cause injury.*



CAUTION: *Make sure that the weight of a trailed vehicle that is not equipped with brakes, NEVER EXCEEDS the weight of the machine that is towing the vehicle. Stopping distance increases with increasing speed as the weight of the towed load increases, especially on hills and slopes.*



WARNING: *Lower or block elevated implements and other attachments before servicing or when leaving the equipment.*

Service



CAUTION: *Never refuel the machine when the engine is hot or running. Never smoke while refueling.*



WARNING: *Check and service cooling system according to maintenance instructions.*

Hot coolant can spray out if radiator cap is removed. To remove radiator cap, let system cool, turn to first notch, then wait until all pressure is released. Scalding can result from fast removal of radiator cap.



WARNING: *Hydraulic oil or diesel fuel leaking under pressure can penetrate the skin and cause infection or other injury.*

To Prevent Personal injury:

Relieve all pressure, before disconnecting lines.

Before applying pressure, make sure all connections are tight and components are in good condition.

Never use your hand to check for suspected leaks under pressure. Use a piece of cardboard or wood for this purpose.

If injured by leaking fluid, see your doctor immediately.

HAND SIGNALS

For communication under noise conditions and special operations the American Society of Agricultural Engineers has made standard agricultural hand signals. You will find that the hand signals can decrease time loss and prevent accidents.

Start the Engine



Start the engine. Move arm in a circle at belt level.

This Far To Go



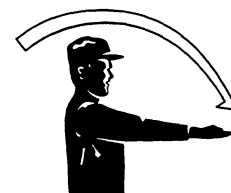
This far to go. Put your hands in front of your face with the back of your hands outward. Move your hands in or out as an indication how far to go.

Stop the Engine



Stop the engine. Move your right arm across your neck from left to right.

Move Out



Move out. Face in the needed direction of movement. Put your arm straight out behind you. Then, swing your arm over your head and forward until your arm is straight out in front of you with the back of your hand up.

Move Toward Me- Follow Me



Move toward me or follow me. Look toward person or vehicle you need to move. Hold one hand in front of you with the back of the hand toward the vehicle and move your arm from the elbow to the fingers backward and forward.



Our support email:

ebooklibonline@outlook.com