


395, 495 Tractor
Operators Manual

9-19740






	<p><i>THIS SAFETY ALERT SYMBOL INDICATES IMPORTANT SAFETY MESSAGES IN THIS MANUAL. WHEN YOU SEE THIS SYMBOL, CAREFULLY READ THE MESSAGE THAT FOLLOWS AND BE ALERT TO THE POSSIBILITY OF PERSONAL INJURY OR DEATH.</i></p>
	M171B

If Safety Decals on this machine use the words **Danger, Warning or Caution**, which are defined as follows:

- **DANGER:** Indicates an immediate hazardous situation which if not avoided, will result in death or serious injury. The color associated with Danger is RED.
- **WARNING:** Indicates an potentially hazardous situation which if not avoided, will result in serious injury. The color associated with Warning is ORANGE.
- **CAUTION:** Indicates an potentially hazardous situation which if not avoided, may result in minor or moderate injury. It may also be used to alert against unsafe practices. The color associated with Caution is YELLOW.

If Safety Decals on this machine are ISO two panel Pictorial, decals are defined as follows:

- The first panel indicates the nature of the hazard.
- The second panel indicates the appropriate avoidance of the hazard.
- Background color is YELLOW.
- Prohibition symbols such as   and  if used, are RED.

WARNING

IMPROPER OPERATION OF THIS MACHINE CAN CAUSE INJURY OR DEATH. BEFORE USING THIS MACHINE, MAKE CERTAIN THAT EVERY OPERATOR:

- Is instructed in safe and proper use of the machine.
- Reads and understands the Manual(s) pertaining to the machine.
- Reads and understands ALL Safety Decals on the machine.
- Clears the area of other persons.
- Learns and practices safe use of machine controls in a safe, clear area before operating this machine on a job site.

It is your responsibility to observe pertinent laws and regulations and follow Case Corporation instructions on machine operation and maintenance.

TO THE OWNER _____

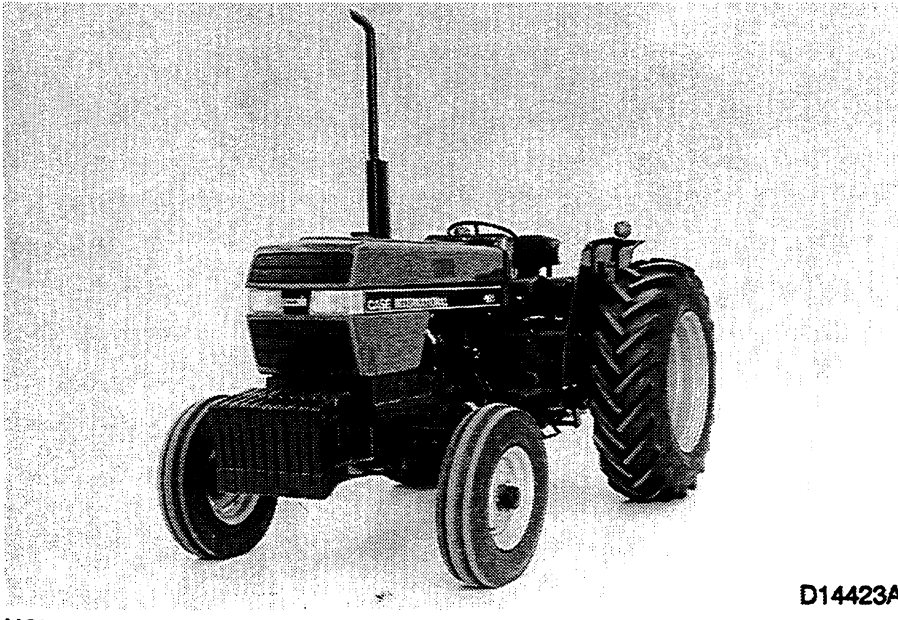
TO THE OWNER

Use this manual as your guide. If you follow the instructions given in this manual, your tractor will work well for many years.

Your dealer can give you assistance with Case Corporation made parts and persons with special training that know the best methods of repair and maintenance for your tractor.

Call your dealer if you need any assistance or information.

MODEL 495 TRACTOR With Two Wheel Drive



D14423A

NOTE: *When you are in the tractor seat looking forward, the right hand and left hand of the tractor are the same as your right hand and left hand.*

Don 9-19740
August, 1991

TO THE OWNER _____

MODEL 395 TRACTOR
With Two Wheel Drive



D14423R

GENERAL TABLE OF CONTENTS

Safety/Decals	6
Instruments/Controls	15
Operating Instructions	28
Field Operation	62
Tires/Wheels/Spacing/Ballast	81
Lubrication/Filters/Fluids	108
Maintenance/Adjustments	140
Electrical System	151
Storage	162
Specifications	165
Detail Index	185

IDENTIFICATION NUMBERS _____

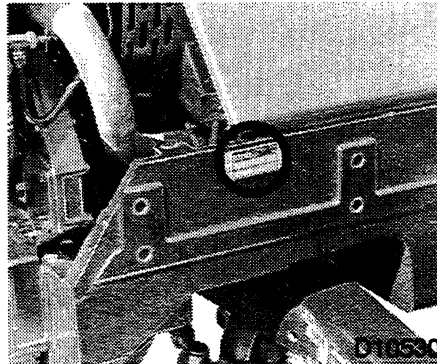
PRODUCT IDENTIFICATION AND SERIAL NUMBERS

When ordering parts or when requesting information or assistance always give the model and serial numbers of your tractor.

Write the model and serial numbers of your tractor on the lines below.

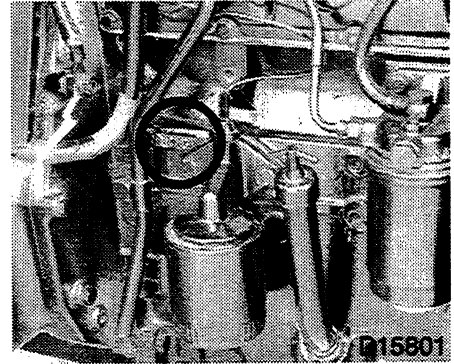
Serial Number Locations

TRACTOR



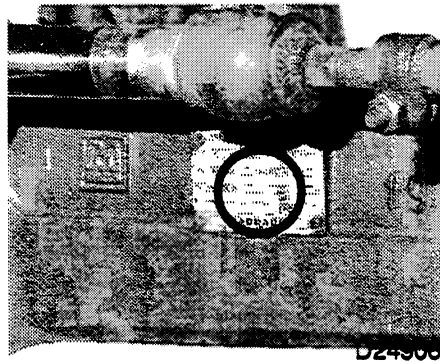
Model and Product _____
Identification Number _____

ENGINE



Serial Number _____

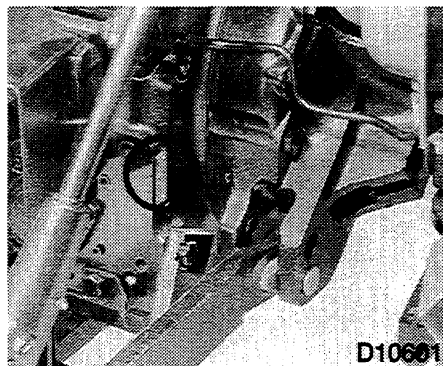
MFD AXLE



Serial Number _____

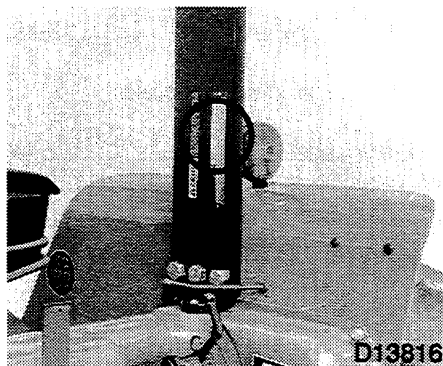
IDENTIFICATION NUMBERS _____

TRANSMISSION



Serial Number _____

ROPS FRAME



Serial Number _____

Transmission Serial Number

EXAMPLE: 293805 BTY

The suffix letter, BTY denote the build of the unit.

The first letter denotes the type of drive train, B = fast speed transmission, A or D = slow speed transmission.

The second letter denotes the bevel gear ratio,

T = 11:52, S = 14:51 and R = 12:53.

The third letter denotes the operating speeds for the PTO shafts as shown below.

- U = 555 RPM Upper Shaft
- V = 1000 RPM Lower Shaft*
- W = 580 RPM Upper Shaft
- X = 606 RPM Upper Shaft
- Y = 611 RPM Upper Shaft
- Z = 614 RPM Upper Shaft

NOTE: All upper shafts will have 6 splines.

When applicable, dual speed installations are indicated by a fourth suffix letter D. The lower shaft will usually have 21 splines. However, a 6 spline shaft may be installed for some markets.

* V denotes that only the lower PTO shaft is fitted. This shaft is for compressor (or similar) operation and may have 21 or 6 splines.

SECTION INDEX

Decals	10-12	Safety	7
Roll Over Protection Structure		Safety Rules	7-9
(ROPS)	13, 14		
ROPS Label	14		
Safety Rules	14		
Tractor Roll Over	14		

SAFETY

Before operating, read and comply with the operators' manual and safety instructions.

Understand that your safety and the safety of other persons is measured by how you service, and operate this machine. Know the positions and operations of all controls before you try to operate. **MAKE SURE YOU CHECK ALL CONTROLS IN A SAFE AREA BEFORE STARTING YOUR WORK.**

READ THIS MANUAL COMPLETELY and make sure you understand the controls. All equipment has a limit. Make sure you understand the speed, brakes, steering, stability, and load characteristics of this machine before you start to operate.

The safety information given in this manual does not replace safety codes, insurance needs, federal, state and local laws. Make sure your machine has the correct equipment needed by the local laws and regulations.

CASE is continuing to work for your safety: by making tractors with better protection and by giving these rules for safe operation.



THIS SAFETY ALERT SYMBOL INDICATES IMPORTANT SAFETY MESSAGES IN THIS MANUAL. WHEN YOU SEE THIS SYMBOL, CAREFULLY READ THE MESSAGE THAT FOLLOWS AND BE ALERT TO THE POSSIBILITY OF PERSONAL INJURY OR DEATH.

M171A



Safety Rules



- Before starting the engine, be sure all operating controls are in neutral. This will eliminate accidental movement of the machine or start up of power driven equipment. R106C
- Operate controls only when seated in the Operators seat. R137
- Securely fasten your seat belt. Your tractor is equipped with a ROPS cab or frame for your protection. The seat belt can help insure your safety if it is used and maintained. Never wear a seat belt loosely or with slack in the belt system. Never wear the belt in a twisted condition or pinched between the seat structural members. R271
- A frequent cause of personal injury or death is persons falling off and being run over. Do not permit others to ride. Only one person - the operator - should be on the machine when it is in operation. R115A
- Before leaving the tractor, stop the engine, put all controls in NEUTRAL and apply the park brake.

SAFETY/DECALS

- Stay off slopes too steep for safe operation. Shift down before you start up or down a hill with a heavy load. Avoid “free wheeling”. R123
- Do not drive on roads, or at high speed anywhere, with the differential lock engaged. Difficult steering will occur, and can result in an accident. In field operation, use the differential lock for traction improvement, but release for turning at row ends. R116
- Travel speed should be such that complete control and machine stability is maintained at all times. Where possible, avoid operating near ditches, embankments and holes. Reduce speed when turning, cross slopes, and on rough, slick, or muddy surfaces. R109A
- Collision of high speed road traffic and tractors or implements can cause personal injury or death. On roads, use flasher/lights according to local laws. Keep SMV emblem visible. Pull over to let faster traffic pass. Slow down and signal before turning off. R110C
- Brake pedals must be locked together for road travel. This will insure uniform brake application and maximum stopping ability. R112
- Make sure that the weight of a trailed vehicle that is not equipped with brakes, NEVER EXCEEDS the weight of the machine that is towing the vehicle. Stopping distance increases with increasing speed as the weight of the towed load increases, especially on hills and slopes. R114A
- Extra weight and bad traction conditions such as mud or ice increase your stopping distance. Remember that liquid in the tires, weights on the machine or wheels, tanks filled with fertilizer, herbicides or insecticides - all these add weight and increase the distance you need in which to stop. R113A
- Rear upset can result if pulling from wrong location on tractor. Hitch only to the drawbar. Use 3 point hitch only with implements designed for its use - not as a drawbar. R119
- PTO driven machinery can cause serious injury. Before working on or near the PTO shaft, or servicing or clearing the driven machine, put the PTO lever in the DISENGAGE position and STOP the engine. R154
- Whenever a PTO driven machine is in operation, the PTO guard must be in place for most operations to prevent injury to the operator or bystanders. Where attachments, such as pumps, are installed on the PTO shaft (especially if the tractor PTO guard is moved upward or removed) extended shielding equivalent to the PTO guard must be installed with the attachment. Install the PTO guard to its original position immediately when the attachment is removed. R273
- When doing stationary PTO work and dismounting from the tractor with the PTO running, keep clear of all moving parts as they are a potential safety hazard. R127
- Never operate the engine in a closed building. Proper ventilation is required under all circumstances. R142
- Never refuel the machine when the engine is hot and running. Never smoke while refueling. R139B

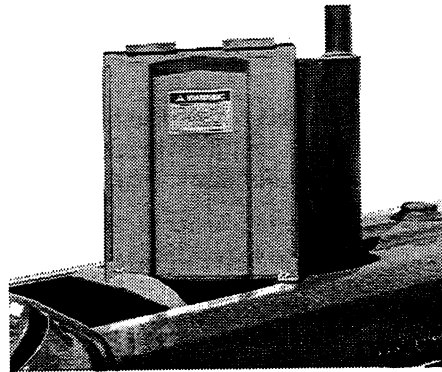
SAFETY/DECALS

- Check and service cooling system according to maintenance instructions.
- Hot coolant can spray out if radiator cap is removed while the system is hot. To remove radiator cap, let system cool, turn to first notch, then wait until all pressure is released. Scalding can result from fast removal of radiator cap. R141
- Hydraulic oil or diesel fuel leaking under pressure can penetrate the skin and cause infection or other injury.
To Prevent Personal Injury:
Relieve all pressure, before disconnecting fluid lines.
Before applying pressure, make sure all connections are tight and components are in good condition.
Never use your hand to check for suspected leaks under pressure.
Use a piece of cardboard or wood for this purpose.
If injured by leaking fluid, see your doctor immediately. R149
- Battery explosion and/or damage to electrical components can result from improper connection of booster batteries or charger. Connect positive to positive and negative to negative. Externally, battery acid can cause burns and blindness, and taken internally is poison. R146
- It is good practice to carry a fire extinguisher on the machine. Be sure that the extinguisher is properly maintained and be familiar with its proper use. R102A
- This tractor is equipped with a spring applied mechanical front wheel drive (MFD) clutch and a front axle limited slip differential. Even with the MFD engaging switch in the OFF position, the front axle clutch can propel both front wheels if any of the following conditions occur:
 1. The engine is turned off.
 2. The engine is stopped when the rear wheels are still coasting.
 3. Any interruption in the clutch hydraulic system flow or pressure or in the electrical controls for clutch operation.
- For these reasons, the following service procedures must be followed.
Before rotating the rear wheels of a MFD tractor (if you are using engine power with the rear wheels supported off the ground), one of the following procedures must be done to prevent an accidental tractor movement:
 1. Jack up and support BOTH front wheels completely off the ground.OR
 2. Disconnect the front wheel drive shaft.Doing one of these two procedures will insure that engagement of the MFD clutch will not result in tractor movement.

DECALS

IMPORTANT: *Install new decals if the old decals are destroyed, lost, painted over or can not be read. When parts are replaced that have decals, make sure you install a new decal with each new part.*

NOTE: *New decals are available from your Dealer.*



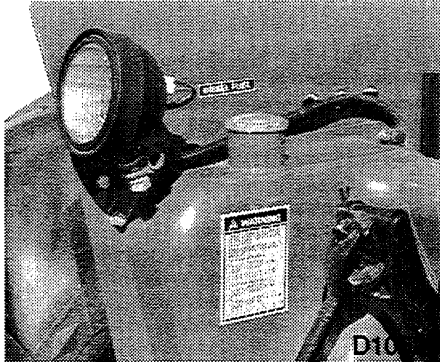
WARNING

BATTERIES CONTAIN ACID AND EXPLOSIVE GAS. EXPLOSION CAN RESULT FROM SPARKS, FLAMES, OR WRONG CABLE CONNECTIONS. TO CONNECT JUMPER CABLES OR CHARGER, SEE MANUAL(S) FOR THE CORRECT PROCEDURE. FAILURE TO FOLLOW THE ABOVE INSTRUCTIONS CAN CAUSE SERIOUS PERSONAL INJURY OR DEATH.

FD

321-6714A

SAFETY/DECALS



⚠ WARNING

TO AVOID CLOTHING ENTANGLEMENT AND INJURY, PTO SHIELD MUST BE POSITIONED FOR SHAFT BEING USED. KEEP DRIVELINE SHIELDS IN PLACE.

DRAWBAR MUST BE SET AND LOCKED TO PREVENT BOTTOMING OR SEPARATION OF DRIVELINE.

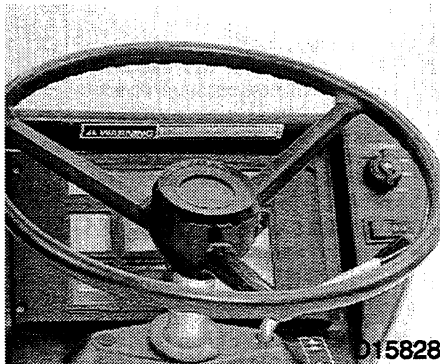
FOR TRACTORS WITH ONE PTO SHAFT

8 TOOTH SHAFT	14 INCH (356mm)
540 RPM	

FOR TRACTORS WITH TWO PTO SHAFTS

8 TOOTH SHAFT	14 INCH (356mm)
540 RPM	
21 TOOTH SHAFT	18 INCH (457mm)
1000 RPM	

321-6769



D15828

⚠ WARNING

PTO MACHINES MAY FAIL IF OPERATED OVER RATED SPEEDS. AVOID INJURY. LIMIT RPM TO 600 OR LESS FOR 540 RPM MACHINES AND 1100 OR LESS FOR 1000 RPM MACHINES.

321-6770

Buy Now



Our support email:

ebooklibonline@outlook.com