

895 - 995 Tractors

Operators Manual

9-19760

Reprinted

CASE III



This symbol means ATTENTION! BECOME ALERT! YOUR SAFETY IS INVOLVED. The message that follows the symbol contains important information about your safety. Carefully read the message. Make sure you fully understand the causes of possible injury or death.

SB001

IF THIS MACHINE IS USED BY AN EMPLOYEE, IS LOANED, OR IS RENTED, MAKE SURE THAT THE OPERATOR UNDERSTANDS THE TWO INSTRUCTIONS BELOW.

BEFORE THE OPERATOR STARTS THE ENGINE:

1. GIVE INSTRUCTIONS TO THE OPERATOR ON SAFE AND CORRECT USE OF THE MACHINE.
2. MAKE SURE THE OPERATOR READS AND UNDERSTANDS THE OPERATOR'S MANUAL FOR THIS MACHINE.

WARNING

IMPROPER OPERATION OF THIS MACHINE CAN CAUSE INJURY OR DEATH.

BEFORE STARTING THE ENGINE, DO THE FOLLOWING:

1. READ THE OPERATOR'S MANUAL.
2. READ ALL SAFETY DECALS ON THE MACHINE.
3. CLEAR THE AREA OF OTHER PERSONS.

LEARN AND PRACTICE SAFE USE OF MACHINE CONTROLS IN A SAFE, CLEAR AREA BEFORE YOU OPERATE THIS MACHINE ON A JOB SITE.

It is your responsibility to observe pertinent laws and regulations and to follow manufacturer's instructions on machine operation and maintenance.

See your Authorized Case dealer for additional operator's manuals, parts catalogs, and service manuals.

TO THE OWNER _____

TO THE OWNER

Use this manual as your guide. If you follow the instructions given in this manual, your tractor will work well for many years.

Your dealer can give you assistance with Case Corporation made parts and persons with special training that know the best methods of repair and maintenance for your tractor.

Call your dealer if you need any assistance or information.

MODEL 995 TRACTOR With Mechanical Front Drive



D12902

NOTE: *When you are in the tractor seat looking forward, the right hand and left hand of the tractor are the same as your right hand and left hand.*

TO THE OWNER _____

MODEL 895 TRACTOR
With Two Wheel Drive



D13804C

GENERAL TABLE OF CONTENTS

Safety/Decals	6
Instruments/Controls	15
Operating Instructions	37
Field Operation	75
Tires/Wheels/Spacing/Ballast	98
Lubrication/Filters/Fluids	129
Maintenance/Adjustments	163
Electrical System	180
Storage	194
Specifications	197
Detail Index	217

IDENTIFICATION NUMBERS _____

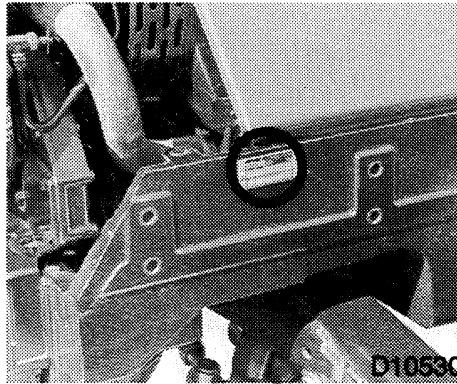
PRODUCT IDENTIFICATION AND SERIAL NUMBERS

When ordering parts or when requesting information or assistance always give the model and serial numbers of your tractor.

Write the model and serial numbers of your tractor on the lines below.

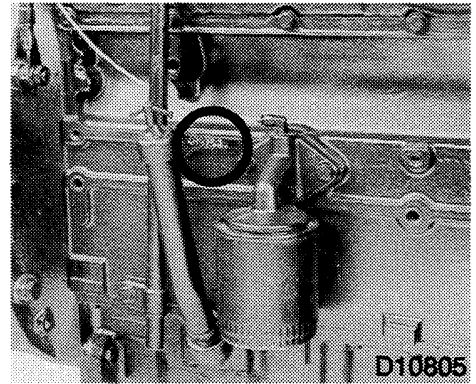
Serial Number Locations

TRACTOR



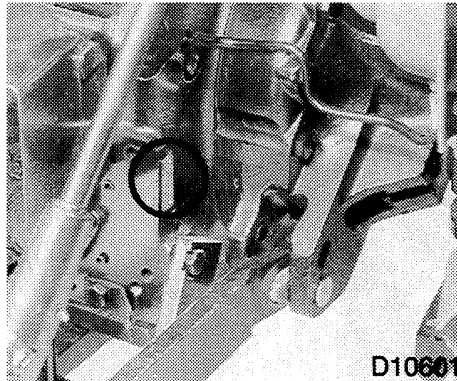
Model and Product _____
Identification Number _____

ENGINE



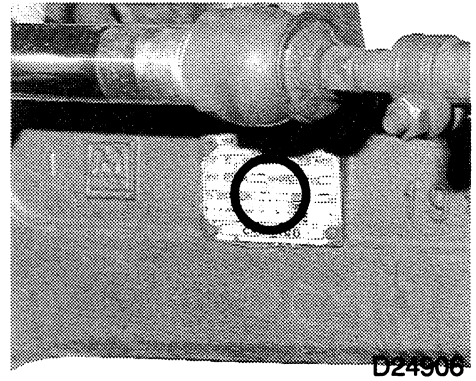
Serial Number _____

TRANSMISSION



Serial Number _____

MFD AXLE

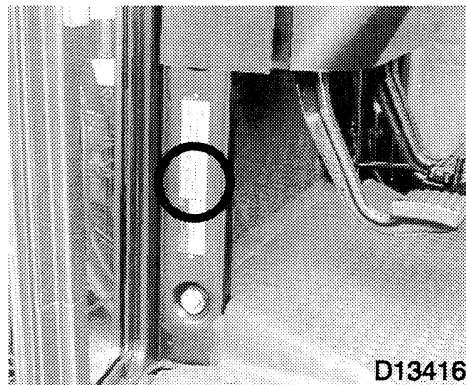


Serial Number _____

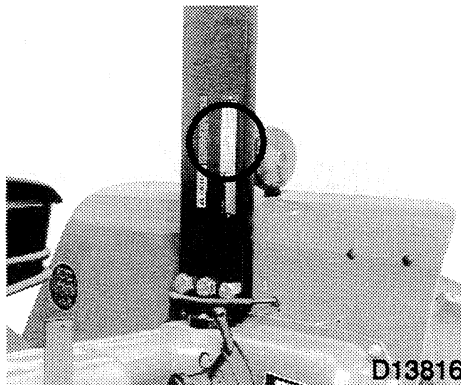
IDENTIFICATION NUMBERS _____

CAB

ROPS FRAME



Serial Number _____



Serial Number _____

Transmission Serial Number

EXAMPLE: 293805 BTY

The suffix letter, BTY denote the build of the unit.

The first letter denotes the type of drive train, B = fast speed transmission, A or D = slow speed transmission.

The second letter denotes the bevel gear ratio,

T = 11:52, S = 14:51 and R = 12:53.

The third letter denotes the operating speeds for the PTO shafts as shown below.

- U = 555 RPM Upper Shaft
- V = 1000 RPM Lower Shaft*
- W = 580 RPM Upper Shaft
- X = 606 RPM Upper Shaft
- Y = 611 RPM Upper Shaft
- Z = 614 RPM Upper Shaft

NOTE: All upper shafts will have 6 splines.

When applicable, dual speed installations are indicated by a fourth suffix letter D. The lower shaft will usually have 21 splines. However, a 6 spline shaft may be installed for some markets.

* V denotes that only the lower PTO shaft is fitted. This shaft is for compressor (or similar) operation and may have 21 or 6 splines.

SECTION INDEX

Decals	10-12	Safety	7-9
		Safety Rules	7-9
Roll Over Protection Structure			
(ROPS)	13,14		
ROPS Label	14		
Safety Rules	14		
Tractor Roll Over	14		

SAFETY


Before operating, read and comply with the operators' manual and safety instructions.

Understand that your safety and the safety of other persons is measured by how you service, and operate this machine. Know the positions and operations of all controls before you try to operate. **MAKE SURE YOU CHECK ALL CONTROLS IN A SAFE AREA BEFORE STARTING YOUR WORK.**

READ THIS MANUAL COMPLETELY and make sure you understand the controls. All equipment has a limit. Make sure you understand the speed, brakes, steering, stability, and load characteristics of this machine before you start to operate.

The safety information given in this manual does not replace safety codes, insurance needs, federal, state and local laws. Make sure your machine has the correct equipment needed by the local laws and regulations.

CASE is continuing to work for your safety: by making tractors with better protection and by giving these rules for safe operation.



THIS SAFETY ALERT SYMBOL INDICATES IMPORTANT SAFETY MESSAGES IN THIS MANUAL. WHEN YOU SEE THIS SYMBOL, CAREFULLY READ THE MESSAGE THAT FOLLOWS AND BE ALERT TO THE POSSIBILITY OF PERSONAL INJURY OR DEATH.

M171A

Safety Rules

- Before starting the engine, be sure all operating controls are in neutral. This will eliminate accidental movement of the machine or start up of power driven equipment. R106C
- Operate controls only when seated in the Operators seat. R137
- Securely fasten your seat belt. Your tractor is equipped with a ROPS cab or frame for your protection. The seat belt can help insure your safety if it is used and maintained. Never wear a seat belt loosely or with slack in the belt system. Never wear the belt in a twisted condition or pinched between the seat structural members. R271
- A frequent cause of personal injury or death is persons falling off and being run over. Do not permit others to ride. Only one person - the operator - should be on the machine when it is in operation. R115A
- Before leaving the tractor, stop the engine, put all controls in NEUTRAL and apply the park brake.

Buy Now



Our support email:

ebooklibonline@outlook.com