

1070 Tractor Operators Manual

9-2432

Reprinted

CASE III



*This symbol means **ATTENTION! BECOME ALERT! YOUR SAFETY IS INVOLVED.** The message that follows the symbol contains important information about your safety. Carefully read the message. Make sure you fully understand the causes of possible injury or death.*

SB001

IF THIS MACHINE IS USED BY AN EMPLOYEE, IS LOANED, OR IS RENTED, MAKE SURE THAT THE OPERATOR UNDERSTANDS THE TWO INSTRUCTIONS BELOW.

BEFORE THE OPERATOR STARTS THE ENGINE:

1. GIVE INSTRUCTIONS TO THE OPERATOR ON SAFE AND CORRECT USE OF THE MACHINE.
2. MAKE SURE THE OPERATOR READS AND UNDERSTANDS THE OPERATOR'S MANUAL FOR THIS MACHINE.



IMPROPER OPERATION OF THIS MACHINE CAN CAUSE INJURY OR DEATH.

BEFORE STARTING THE ENGINE, DO THE FOLLOWING:

1. READ THE OPERATOR'S MANUAL.
2. READ ALL SAFETY DECALS ON THE MACHINE.
3. CLEAR THE AREA OF OTHER PERSONS.

LEARN AND PRACTICE SAFE USE OF MACHINE CONTROLS IN A SAFE, CLEAR AREA BEFORE YOU OPERATE THIS MACHINE ON A JOB SITE.

It is your responsibility to observe pertinent laws and regulations and to follow manufacturer's instructions on machine operation and maintenance.

See your Authorized Case dealer for additional operator's manuals, parts catalogs, and service manuals.

TO THE PURCHASER OF A CASE TRACTOR

The care you give your Case Tractor will greatly determine the satisfaction and service life you will obtain from it. Use this manual as your guide. By observing the instructions and suggestions in this manual, your Case Tractor will serve you well for many years.

As an Authorized Case Dealer, we stock Genuine Case Parts, which are manufactured with the same precision and skill as the original equipment. Our factory trained staff is kept well informed on the best methods of servicing Case equipment and is ready and able to help you.

Should you require additional aid or information, contact us.

Your Authorized Case Dealer



**LOOK FOR THIS SYMBOL TO POINT
OUT IMPORTANT SAFETY PRECAUTIONS**

**TO INSURE EFFICIENT AND PROMPT SERVICE, PLEASE
FURNISH US WITH THE MODEL, SERIAL, ENGINE AND
TRANSMISSION SERIAL NUMBERS OF YOUR TRACTOR
IN ALL CORRESPONDENCE OR CONTACTS**

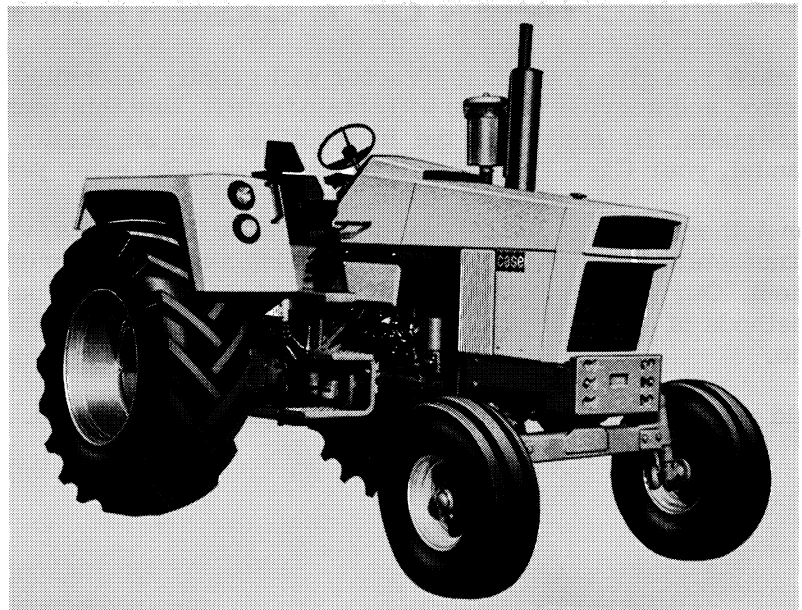


Figure 1 1070 Tractor

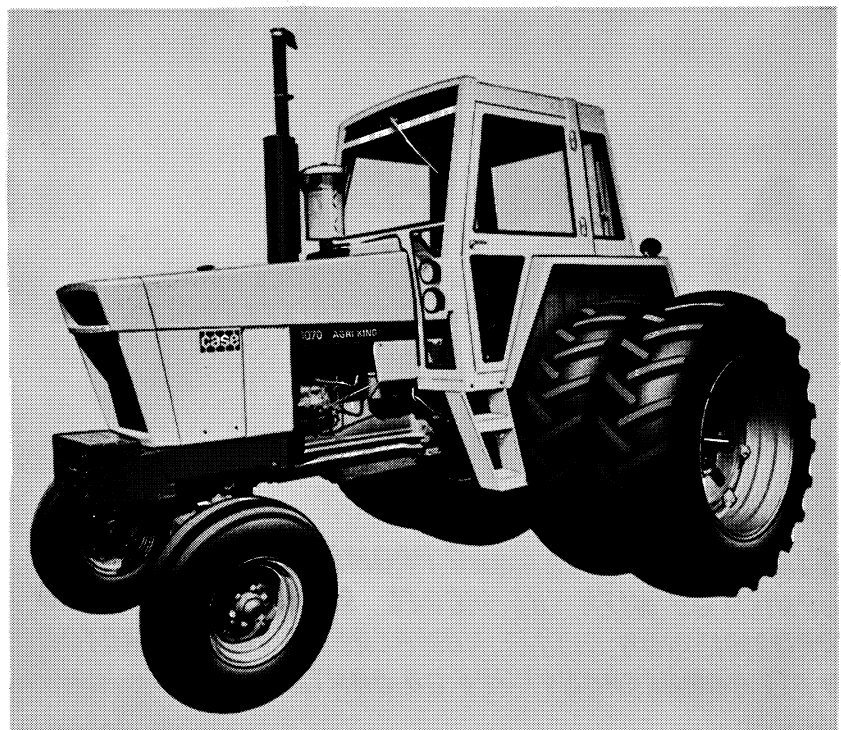


Figure 2 1070 Tractor with Cab

SERIAL NUMBERS

When ordering parts from your Authorized Case Dealer and in all contacts or correspondence with your dealer, relative to the tractor always specify the Model, Serial, Engine and Transmission Serial Numbers of your Tractor.

The Model and Serial Numbers are stamped on the number plate located on the outside and lower left hand side of the fire wall assembly, Figure 3. The Engine Number is stamped on a plate fastened to the rear right hand side of the engine block, Figure 4. The transmission Serial Number is stamped on a plate and fastened to the right hand side and to the front of the axle on the transmission housing, Figure 5.

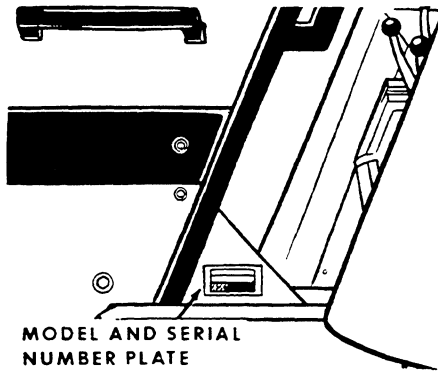


Figure 3

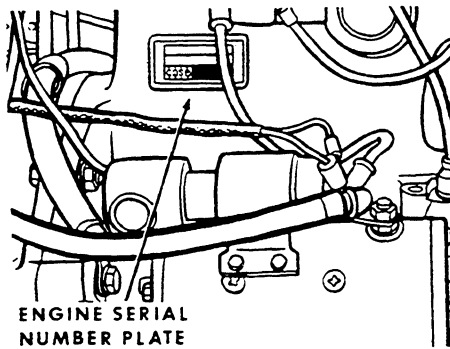


Figure 4

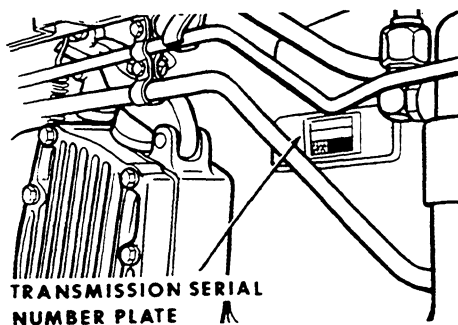


Figure 5

NOTE The terms "Right Hand" and "Left Hand" whenever used in this manual, apply to the tractor when facing in the direction the tractor will move in forward operation.

For reference, fill in the Serial Numbers of your tractor in the spaces provided below.

Model Designation _____

Tractor Serial Number _____

Engine Serial Number _____

Transmission Serial Number _____

Engine Lubricating System

Oil Pressure ----- 45 to 55 Pounds with Engine Warm and Operating at Rated Engine Speed.

Type System ----- Pressure and Spray Circulation

Oil Pump ----- Gear Type

Oil Filter ----- Full Flow Spin on Type

Fuel System

Fuel Injection Pump ----- Robert Bosch, Type PES (Multiple Plunger).

Pump Timing ----- 30 Degrees Before Top Dead Center (Port Closing).

Fuel Injectors ----- Pencil Type (Opening Pressure 2800 PSI).

Fuel Transfer Pump ----- Plunger Type, Integral Part of Injection Pump.

Governor ----- Variable Speed, Fly-Weight Centrifugal Type; Integral Parts of Injection pump.

1st Stage fuel filter ----- Full Flow Spin on Type

2nd Stage fuel filter ----- Full Flow on Type

Fuel Tank Water Trap and Drain ---- Located in Base of Fuel Tank

Fuel Tank Capacity ----- 50 U. S. Gallons

Fuel Level Gauge ----- Electric, Located on Instrument Panel.

general specifications

Cooling System

Capacity ----- 38 U.S. Quarts
Type of System ----- Pressurized, Thermostat Controlled
By-Pass Type: Forced Circulation, (Impeller Type Pump).
Radiator ----- Heavy Duty Fin and Tube Type
Thermostat ----- Starts to Open at Approximately 195°F.
Fully Open at 202°.
Pressure Cap Required ----- (w/o cab) 7 PSI
Pressure Cap Required ----- (w/cab) 14 PSI

When using a proper operating 7 PSI pressure cap, the engine temperature can safely rise to 230°F.

Electrical System

Type of System ----- 12 Volt Negative Ground
Batteries ----- (2) 12 Volt Batteries Connected
in parallel.

Group Size 30H, Rated at 1.255 to 1.265
Specific Gravity. Discharge Rate 300 Amps
at 0° F. Voltage drops to 9.2 after 10 seconds.
Voltage drops 1.0 Volt per cell after 4 min.

Alternator ----- 12 Volt 55 Amp Output
Voltage Regulator ----- 12 Volt, Solid State,
Mounted on Alternator.

Starter Motor ----- 12 Volt with Solenoid Switch
Head Lights (2) ----- 12 Volt, 35 Watt, Sealed Beam
Flood Lights (2) ----- 12 Volt, 35 Watt, Sealed Beam
Amber Warning Light ----- 12 Volt, Double Face, Flasher Type
Rear Tail Light ----- 12 Volt, 60 Watt Sealed Beam
Combination Tail and Flood Lamp.

Circuit Breaker System over load check - 12 Volt Twin 40 AMP
Breakers connected in parallel, 80 AMP rating.
60 AMP . Min. Continuous capacity.

Lights Circuit Breaker ----- 30 Amp., Located on Light Switch
Parking Brake Warning Light ----- 12 Volt, Red Flasher Type

Parking Brake

Type ----- Cable Actuated by Or-
chlin Type Handle - Adjustable
from Operator's Seat.

Hydraulic Brakes

Type ----- Hydraulic Actuated, Self-
Adjusting Disc Type Differential
Brakes.

Hydraulic Power Assist Brakes

Type ----- Hydraulic, Power Assisted,
Self-Adjusting Disc Type Diff-
erential Brakes.

Mechanical Transmission

Type ----- 2 Speed Gear Range With
a 4 Speed Gear Section.

Gear Selection ----- 8 Speeds Forward - 2 Speeds
Reverse.

Shifting ----- Mechanical With Plunger Type
Locks and Tube Type Inter-
locks.

Power Shift Transmission

Type ----- 3 Speed Compound Planetary
With Hydraulically Actuated
Clutches and a 4 Speed Gear
Range Section.

Gear Selection ----- 12 Speeds Forward and 4 Speeds
Reverse

Shifting ----- Hydraulic Power Shifting Con-
trolled By a Lever On Operators
Console. 4 Speed Range Con-
trolled By a Mechanical Shifter
From a Lever On Operator's
Console.

Hydrostatic Power Steering

Pump Type ----- Gear Type, Driven By The Engine.
Pump Capacity at 2000 Engine RPM -----8 GPM
Hand Pump Type ----- Gerotor Bi-Directional Driven
By the Steering Wheel.
Actuating Cylinders ----- 2 Way Cylinders Are Integral
Part of Steering Gear Mechanism.

Remote Hydraulic System

Pump ----- Large Volume, Spur Gear, Continuous Running.
Type Valve ----- Dual Valve-Individual Hand Lever Control.
Portable Cylinder Coupling ----- Case Quick Detachable
Break-away Type.
Pump Capacity at 2000 Engine RPM ----- 16 GPM
Relief Valve Pressure ----- 1900 to 2100 PSI
Portable Cylinders ----- Available

Power Take-Off

Type ----- Hydraulically Operated
Rotation ----- Clockwise
Spline Size----- 540 RPM ----- 6 Splines ----- 1-3/8 Dia.
1000 RPM ----- 21 Splines ----- 1-3/8 Dia.
Engine Speed 1900 RPM ----- 540 or 1000 RPM Shaft Speed

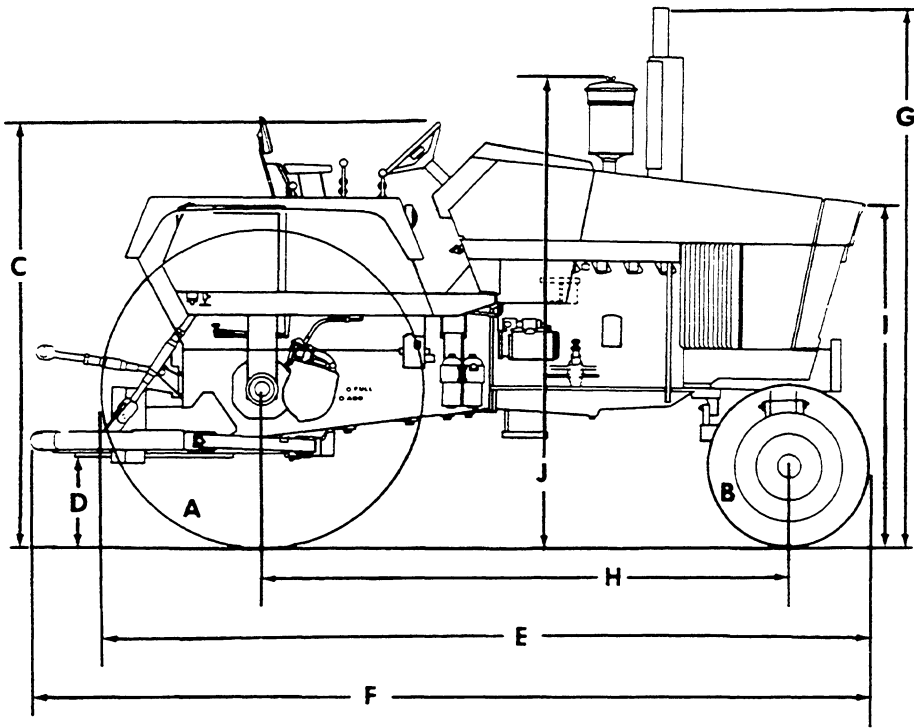
Draft-O-Matic System

Type of sensing ----- Lower Link
Type Control ----- Hand Lever
Type Valve ----- 3 Positions - Raise - Hold - Lower
Type Draft Arms ----- Swinging, with Manual Float Adjustment
Type Hitch ----- 3 Point Category II

Drawbars

Standard or Yoke Type ----- Full Swinging Roller Mounted, Will
Accommodate a 1-1/4 Inch Dia. Pin.

APPROXIMATE OVERALL MEASUREMENTS



Model	A	B	C	D	E	F	G	H	I	J
Adjustable	18.4 - 34R1	7.50-16 F2	84	15	156	162	107	108	78	95

A and B Tire Sizes

C thru J Dimensions in Inches

APPROXIMATE WEIGHT

1070 Tractor ----- 10600 Pounds

TIRE AND WHEEL EQUIPMENT

Front

TIRE SIZE	TIRE PLY	RIM SIZE	TREAD TYPE	DUAL	ADJ.	TIRE PRESSURE
6.00-16	8	400E-16	F2	X	X	64
7.50L-15	8	6L-15	F2	X	X	52
7.50-16	8	550F-16	F2		X	40
9.50L-15	8	8LBH-15	F2		X	36
10.00-16	8	W8L-16	F2		X	36
11.00L-15	8	8LBH-15	F2		X	36
11.00-16	8	W8L-16	R2		X	36
9.50-20	6	W7L-20	R2		X	40

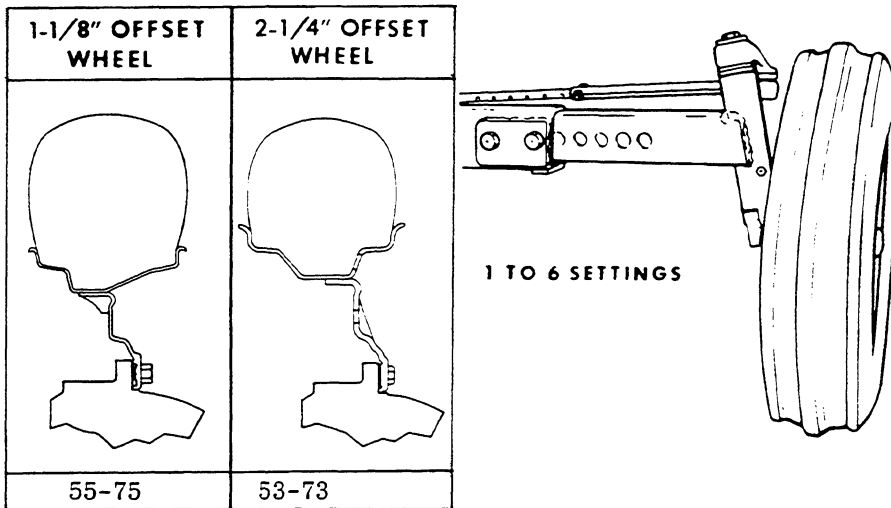
Rear

TIRE SIZE	TIRE PLY	RIM SIZE	TREAD TYPE	DUAL	ADJ.	TIRE PRESSURE
15.5-38	10	W14-38	R1 & R2	X	X	30
16.9-34	8	W16L-34	R1	X	X	22
16.9-38	8	W14-38	R1	X	X	22
18.4-34	8	W15L-34	R1 & R2	X	X	16
18.4-38	8	W16L-38	R1 & R2		X	20
23.1-30	8	DW20-30	R1 & R2		X	16
23.1-34	8	DW20-34	R1 & R2		X	16
20.8-38	8	W18-38	R1		X	18

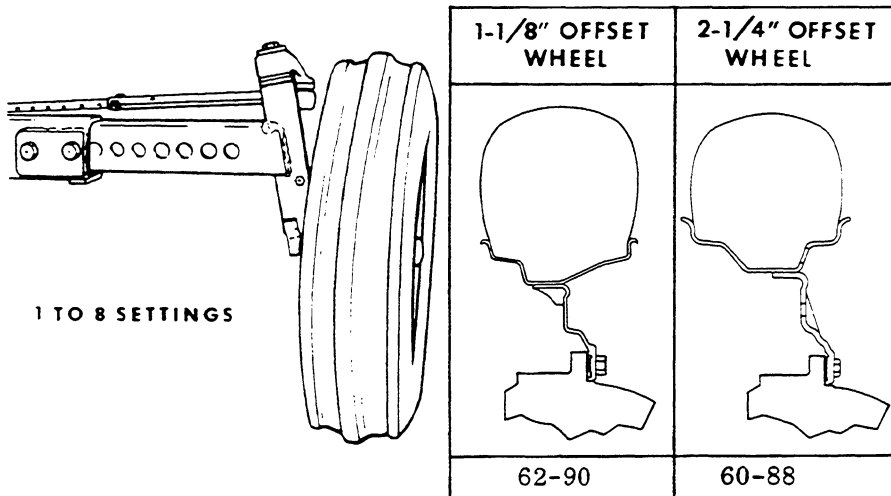
NOTE Keep tires inflated to recommended pressures. Check pressures at least every 60 hours of operation or once a week, whichever occurs first. Do not reduce rear tire pressure to increase traction. When plowing, increase furrow wheel tire pressure 4 PSI.

FRONT WHEEL TREAD SPACING (With Wheels Dished In Only)

STANDARD ADJ. AXLE SPACING IN INCHES



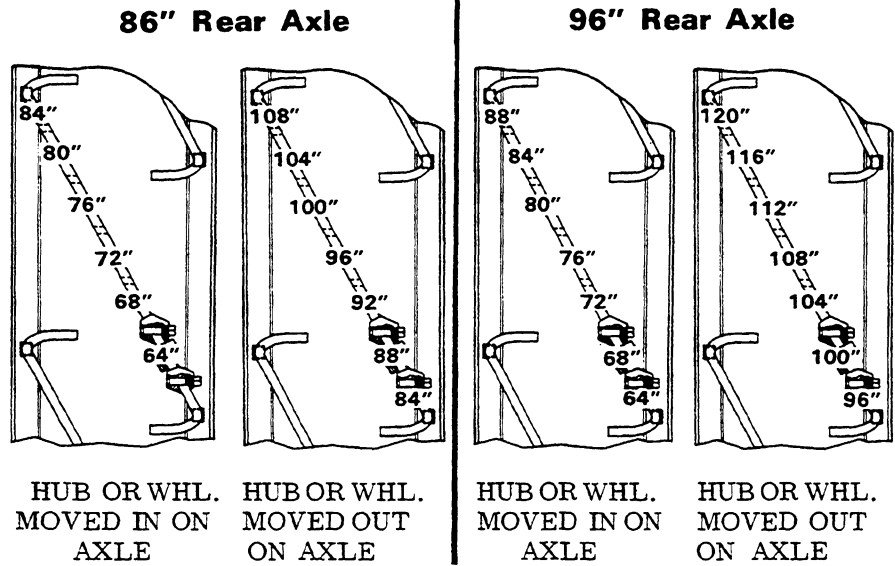
WIDE ADJ. AXLE SPACING IN INCHES



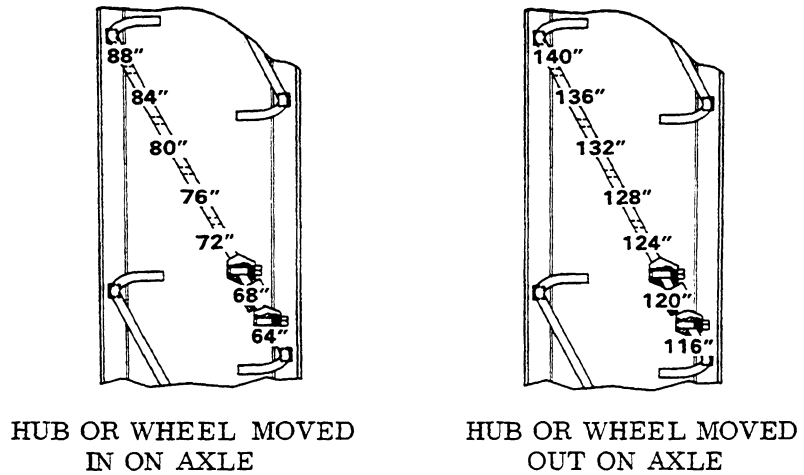
NOTE Axle spacing listings above are from the narrow setting, (with increments of 4 inches), to the wide setting.

NOTE When tightening the front wheel bolts, torque 70 to 80 ft. lbs.

POWER SHIFT REAR WHEEL TREAD SPACING



118" Rear Axle



NOTE Each shifting position hole allows a 2 inch individual wheel adjustment.

Buy Now



Our support email:

ebooklibonline@outlook.com