

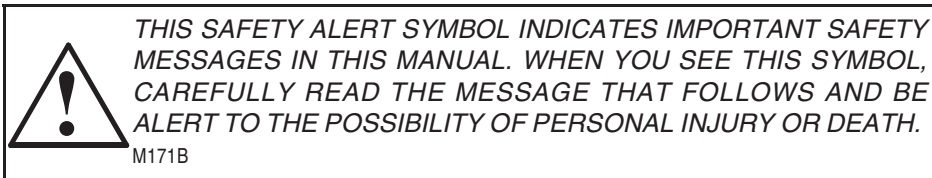
# **7200 Series**

**7210, 7220, 7230, 7240  
and 7250 Tractors**

**Operators Manual**



**Rac 9-24702**



## IMPORTANT

If This Machine Is Used By An Employee Or Is Loaned Or Rented, Make Certain That The Operator(s), Prior To Operating:

1. Is Instructed In Safe And Proper Use.
2. Reviews And Understands The Manual(s) Pertaining To The Machine.

TO THE OWNER

## 7200 Series Tractor with Mechanical Front Drive



A29359

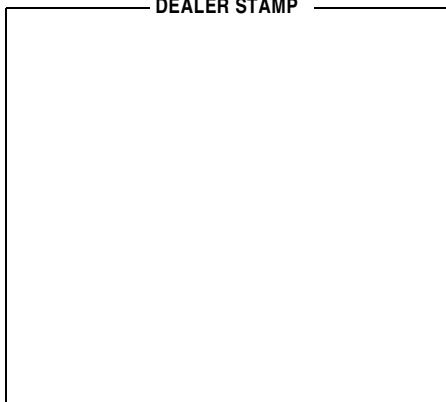
TRIM THIS EDGE

CE

522L94

CASE CORPORATION  
24th and Mead Street  
Racine, WI 53403  
U.S.A.

DEALER STAMP



Rac 9-24702  
February, 1994 (Revised April, 1996)

TRIM THIS EDGE

RIGHT PAGE

## TO THE OWNER

This manual contains important information about the safe operation, adjustment and maintenance of your Case Tractor. Refer to the Detail Index at the end of this manual for locating specific items about your machine.

DO NOT operate or permit anyone to operate or service this machine until you or the other persons have read this manual. Use only trained operators who have demonstrated the ability to operate and service this machine correctly and safely.

This tractor, with standard equipment and authorized attachments, is intended to be used for farming, ranching, etc.

DO NOT use this machine for any application or purpose other than those described in this manual. Consult an authorized dealer or the Case Corporation on changes, additions or modifications that can be required for this machine to comply with various country regulations and safety requirements. Unauthorized modifications will cause serious injury or death. Anyone making such unauthorized modifications is responsible for the consequences.

This Operators Manual is to be stored in the manual compartment equipped on this machine. Make sure this manual is complete and in good condition. Contact your dealer to obtain additional manuals. Contact your dealer for any further information or assistance about your machine. Your dealer has Case Corporation approved service parts. Your dealer has technicians with special training that know the best methods of repair and maintenance for your tractor.

### OFFICIAL JUSTIFYING DOCUMENTS

Specific Test Certificate (copy)  
- Noise Level (86/662/EEC)

Special Safety Equipment  
- (86/295 EEC and 86/296 EEC)

EEC Certificate of Conformity for a New  
Agricultural Equipment Machine  
- Safety (autocertified as per 89/392/EEC)  
- Electromagnetic Compatibility  
(89/336/EEC)  
- Pressure Vessel Testing (87/404/EEC)



**OPERATORS MANUAL  
STORAGE COMPARTMENT**

GENERAL TABLE OF CONTENTS

SAFETY/DECALS ..... 8

INSTRUMENTS/CONTROLS ..... 17

OPERATING INSTRUCTIONS ..... 55

FIELD OPERATION ..... 94

TIRES/WHEELS/SPACING/BALLAST ..... 151

LUBRICATION/FILTERS/FLUIDS ..... 181

MAINTENANCE/ADJUSTMENTS ..... 222

ELECTRICAL SYSTEM ..... 240

SPECIFICATIONS ..... 256

DETAIL INDEX ..... 269



TRIM THIS EDGE

**PRODUCT IDENTIFICATION AND  
SERIAL NUMBERS**

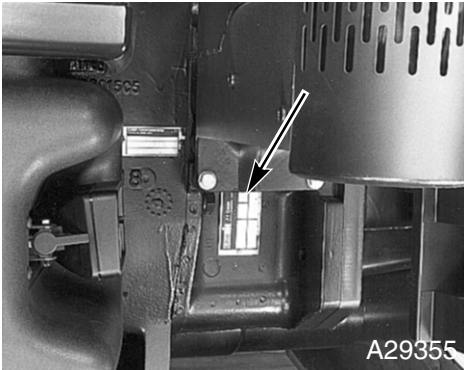
Write your machine Model Number, Product Identification Number (P.I.N.), and Serial Numbers of major components on the lines provided. If needed, give these numbers to your dealer when you need parts or information for your machine.

- 1. TRACTOR MODEL NUMBER \_\_\_\_\_
- 2. PRODUCT IDENTIFICATION NUMBER \*JJA \_\_\_\_\_ \*
- 3. ENGINE SERIAL NUMBER \_\_\_\_\_
- 4. TRANSMISSION SERIAL NUMBER \_\_\_\_\_
- 5. CAB SERIAL NUMBER \_\_\_\_\_
- 6. MFD AXLE SERIAL NUMBER \_\_\_\_\_

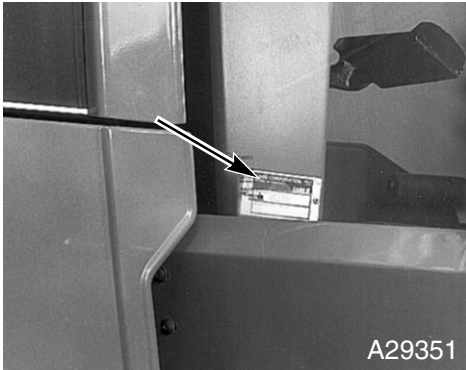
TRIM THIS EDGE

Identification Number Locations

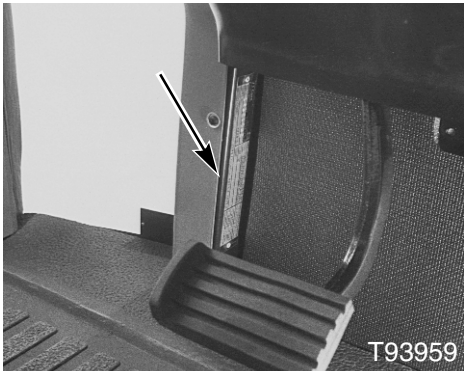
Tractor Model and Product  
Identification Number



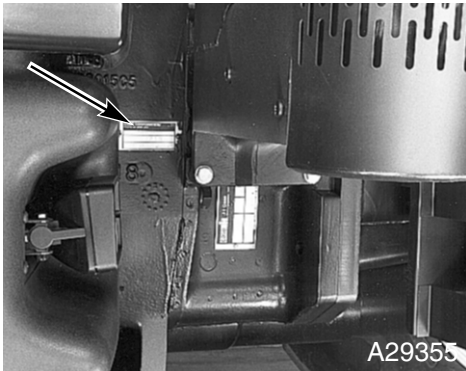
Cab Serial Number



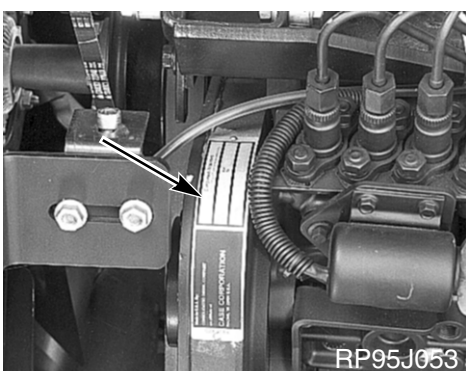
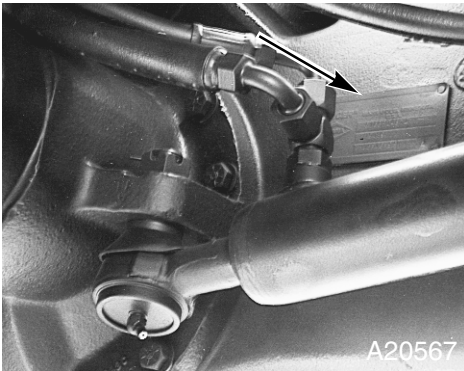
Transmission Serial Number



MFD Axle Serial Number

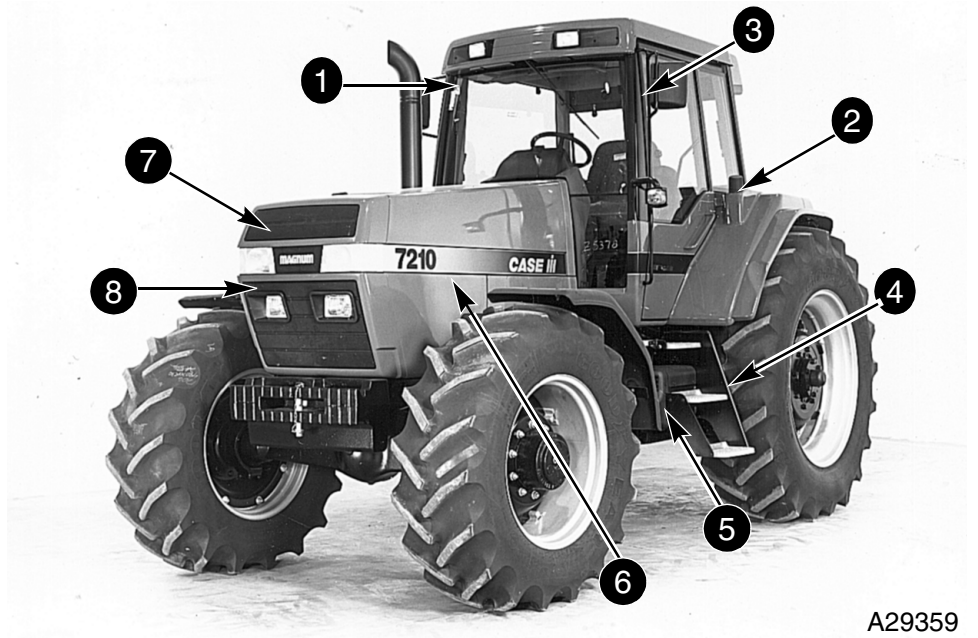


Engine Serial Number



TRIM THIS EDGE

## MACHINE COMPONENTS



A29359

TRIM THIS EDGE

1. Rops Cab
2. Fuel Tank
3. Hand Rail
4. Steps
5. Battery Compartment
6. Hood and Side Panel
7. Radiator
8. Oil Cooler, Condenser/Fuel Cooler

TRIM THIS EDGE

LEFT PAGE

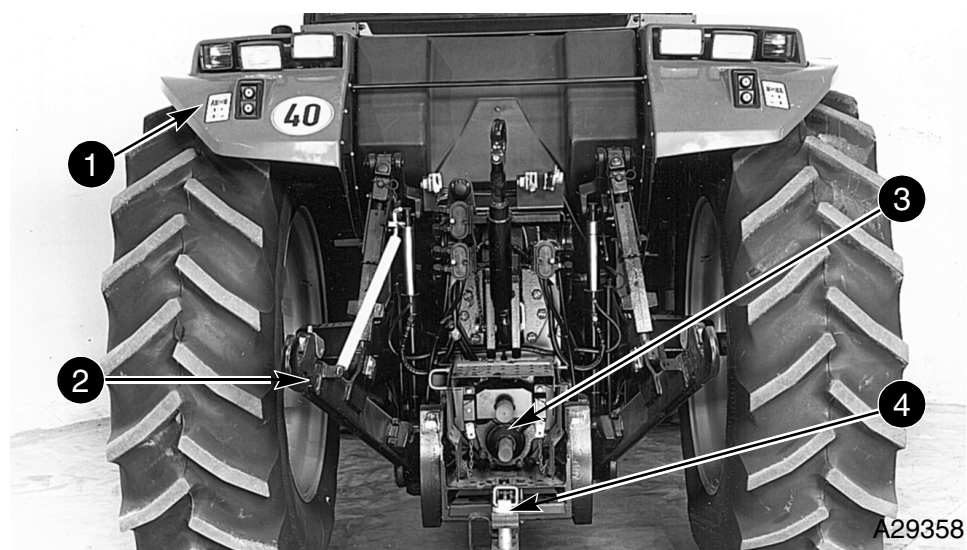


# IDENTIFICATION NUMBERS/MACHINE COMPONENTS



A29360

1. Rops Cab  
2. Exhaust Stack
3. Hood and Side, Panel  
4. Radiator, Oil Cooler, Condenser/Fuel Cooler



A29358

1. Fenders  
2. Hitch System
3. Power Takeoff  
4. Drawbar

TRIM THIS EDGE

TRIM THIS EDGE

RIGHT PAGE

## SAFETY

Understand that your safety and the safety of other persons is measured by how you service and operate this machine. Know the positions and operations of all controls before you try to operate this machine. **MAKE SURE YOU CHECK ALL CONTROLS IN A SAFE AREA BEFORE STARTING YOUR WORK.**

READ THIS MANUAL COMPLETELY and make sure you understand the controls. All equipment has a limit. Make sure you understand the speed, brakes, steering, stability and load characteristics of this machine before you start to operate this machine.

The safety information given in this manual does not replace safety codes, insurance needs, federal, state and local laws. Make sure your machine has the correct equipment needed by the local laws and regulations.

The Case Corporation is continuing to work for your safety: by making tractors with better protection and by giving these rules for safe operation.



*THIS SAFETY ALERT SYMBOL INDICATES IMPORTANT SAFETY MESSAGES IN THIS MANUAL. WHEN YOU SEE THIS SYMBOL, CAREFULLY READ THE MESSAGE THAT FOLLOWS AND BE ALERT TO THE POSSIBILITY OF PERSONAL INJURY OR DEATH.*

M171B



### Intended Use



This tractor is designed solely for use in customary agricultural or similar operation (intended use).

Use in any other way is considered as contrary to the intended use. The manufacturer accepts no liability for any damage or injury resulting from this misuse and these risks must be born solely by the user.

Compliance with and strict adherence to the conditions of operation, service and repair as specified by the manufacturer also constitute essential elements for the intended use.

This tractor should be operated, serviced and repaired only by persons familiar with all its particular characteristics and acquainted with the relevant safety rules (accident prevention).

The accident prevention regulations, all other generally recognized regulations on safety and occupational medicine and the road traffic regulations must be observed at all times.

Any arbitrary modifications carried out on the tractor will relieve the manufacturer of all liability for any resulting damage or injury.



## General Safety and Accident Prevention Regulations



1. In addition to the instructions contained in this operator's manual, also observe the general safety and accident prevention regulations.
2. Always comply with local traffic regulations when driving on public roads.
3. Before starting work, familiarize yourself with all the controls and instruments and their functions. During work is too late.
4. Start the engine only from the operator's seat. Never attempt to start engine by shorting across the starting motor terminals as the machine may immediately start to move.
5. Before moving away, always check the immediate vicinity of the machine (e.g. for children). Ensure adequate visibility.
6. Never run the engine in a closed building.
7. Clothing worn by the operator must be close-fitting. Avoid wearing loose jackets, shirts or ties.
8. Handle fuel with care as it is highly flammable. Never refuel the machine in the vicinity of naked flames or sparks. Do not smoke during refuelling.
9. Always stop the engine and remove the main switch key before refuelling. Fill fuel tank outdoors. Clean up any spilled fuel immediately.
10. Prevent fires by keeping the machine clean.
11. Take care when handling brake fluid and battery acid (toxic and corrosive).

TRIM THIS EDGE



## Transporting Passengers



12. Passengers may only be carried if a proper passenger seat is fitted.
13. The carrying of passengers is otherwise not permitted.



## **Operation**



14. Always adapt your ground speed to the ground conditions. Avoid making sharp turns when driving up or down slopes or when driving across the slope. Do not attempt to turn the machine with the differential lock engaged. When driving down slopes, never depress the clutch and change gear.
15. Attach trailers and/or implements correctly. The operating, steering and braking behavior will be affected by attaching implements, trailers and ballast weights. Therefore ensure adequate steering and braking power.
16. Observe maximum permissible axle loads and total weights.
17. When making turns with towed or mounted implements, always take into consideration the width and inertia of the implement.



## **Leaving the Tractor**



18. When leaving the tractor (machine), ensure that it will not roll away (apply park lock, wheel wedges) stop the engine.
19. Remove the main switch key and lock the operator's cab (when equipped).
20. Never leave the tractor (machine) unattended as long as the engine is still running.
21. Never leave the operator's platform/cab when driving.
22. Lower implement or equipment to the ground before leaving the tractor (machine).



## **Implements**



23. Attach implements and trailers to the tractor (machine) only using the prescribed drawbars or hitches.
24. Take particular care when attaching trailers or implements.
25. Prevent trailer and implement from rolling away.
26. Operate tractor (machine) only when all guards are fitted and in their correct position.



## **PTO Operation**



- 27. Always shut off engine before connecting or disconnecting drive shaft.
- 28. When operating the PTO, no-one must be allowed to remain in the vicinity of the rotating PTO stub shaft or drive shaft.
- 29. Guards for drive shaft and PTO stub shaft must be fitted.
- 30. High-inertia implements do not become stationary immediately when PTO is disengaged. Allow sufficient time for implement to “coast down” to a halt before cleaning or adjusting.
- 31. As soon as drive shaft has been removed, install guard over PTO stub shaft.



## **Service**



- 32. Escaping fluid (fuel or hydraulic oil) under high pressure can penetrate the skin and cause serious injury. If any fluid is injected into the skin, consult a doctor immediately as otherwise serious infections may result.
- 33. Dispose of oil, fuel and filters correctly.
- 34. Do not attempt to mount a tire unless you have the proper equipment and experience to perform the job safely.
- 35. Retighten wheel nuts after the specified hours in this manual.
- 36. Always disconnect battery ground strap(s) before carrying out any electrical repairs on the machine.

TRIM THIS EDGE



## **Basic Rule**



Always check the operating and road safety of the tractor (machine) before starting.



Our support email:

[ebooklibonline@outlook.com](mailto:ebooklibonline@outlook.com)