

400 Series Tractors

Operators Manual

9-261

Reprinted





This symbol means ATTENTION! BECOME ALERT! YOUR SAFETY IS INVOLVED. The message that follows the symbol contains important information about your safety. Carefully read the message. Make sure you fully understand the causes of possible injury or death.

SB001

IF THIS MACHINE IS USED BY AN EMPLOYEE, IS LOANED, OR IS RENTED, MAKE SURE THAT THE OPERATOR UNDERSTANDS THE TWO INSTRUCTIONS BELOW.

BEFORE THE OPERATOR STARTS THE ENGINE:

1. GIVE INSTRUCTIONS TO THE OPERATOR ON SAFE AND CORRECT USE OF THE MACHINE.
2. MAKE SURE THE OPERATOR READS AND UNDERSTANDS THE OPERATOR'S MANUAL FOR THIS MACHINE.



WARNING

IMPROPER OPERATION OF THIS MACHINE CAN CAUSE INJURY OR DEATH.

BEFORE STARTING THE ENGINE, DO THE FOLLOWING:

1. READ THE OPERATOR'S MANUAL.
2. READ ALL SAFETY DECALS ON THE MACHINE.
3. CLEAR THE AREA OF OTHER PERSONS.

LEARN AND PRACTICE SAFE USE OF MACHINE CONTROLS IN A SAFE, CLEAR AREA BEFORE YOU OPERATE THIS MACHINE ON A JOB SITE.

It is your responsibility to observe pertinent laws and regulations and to follow manufacturer's instructions on machine operation and maintenance.

See your Authorized Case dealer for additional operator's manuals, parts catalogs, and service manuals.

TO PURCHASERS OF CASE TRACTORS

Congratulations on your purchase of a Case Tractor and welcome to the ever-increasing number of satisfied Case Owners.

The dependability and the economical performance of your new Case Tractor will prove that you were wise in making this choice.

The organization back of your machine has been building quality farm equipment for more than a century. Your Case Tractor was built in one of the largest and best equipped plants in the world. In this factory, quality materials, precision machinery, high grade workmanship, thorough inspection and complete testing equipment are combined to give you the best in performance and economical operation.

The care which you give your tractor will have a great deal to do with the service and satisfaction you get from it. By observing the precautions and suggestions in this manual, your Case Tractor will serve you well for many years. Make this manual your guide. Should you need information not covered herein, or should your tractor require special servicing, contact your Case Dealer. He has trained men who are kept informed on the best methods of servicing Case Farming Equipment in the field or in his shop.

When it becomes necessary, after long use, to replace certain parts on your tractor, be sure to use only genuine Case Parts, thus insuring proper fit and continuous good service. These may be obtained from your Case Dealer. It is always helpful to provide him with the Model of your tractor in addition to a description and part number, if available, of the parts required.

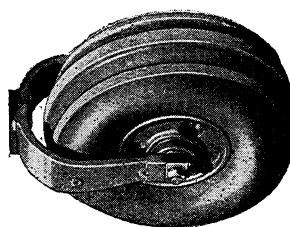
TABLE OF CONTENTS

	Page
Serial Number.....	8
General Specifications.....	9 thru 26
Lubrication.....	27 thru 49
Pressure Fittings.....	30 thru 34
Engine Lubrication.....	37 thru 41
Transmission Lubrication.....	42 thru 44
Hydraulic Control System.....	45
Independent Power Take-off.....	47
Hydraulic Power Steering Attachment.....	48 and 49
Operating Instructions.....	51 thru 111
Run-In Procedure.....	52
Operating Controls and Instrument Guide.....	54 and 55
Engine Starting Procedure.....	58
Stopping Engine.....	59
Cold Weather Operation.....	60
Case Powr-range Transmission.....	62 and 63
Rear Tire Sizes.....	65
Rear Wheel and Front End Weights.....	66
Drawbar.....	67 thru 69
Belt Pulley.....	70 thru 72
Independent Power Take-Off.....	73 thru 76
Constant Hydraulic Control Operation.....	77 thru 88
Rear Wheel Tread Spacings.....	89 thru 97
Front Wheel Tread Spacings.....	98 thru 103
Fuels and Fuel Storage.....	104 and 105
Low Cost Fuel Equipped Tractors.....	106 and 107
Implement Warning Lamp.....	108
Important Checks During Operation.....	110 and 111
Service Suggestions.....	114 thru 123
Preventive Maintenance.....	125 thru 171
Cooling System.....	127 thru 134
Air Cleaner.....	135 thru 137
Crankcase Breather.....	138
Transmission Breather.....	138
Fuel System.....	139 thru 141
Starting and Lighting Equipment.....	142 thru 158
Governor and Engine Speed.....	159
Steering Gear.....	159
Transmission.....	159
Valve Tappet Clearance.....	160 and 161
Traction Clutch Adjustment.....	162 thru 164
Adjusting Power Take-off Clutch.....	166
Differential Brake.....	165
Repacking and Adjusting Front Wheel Bearing.....	167 thru 169
Tractor Storage.....	170 and 171
LP Gas Equipment.....	173 thru 187

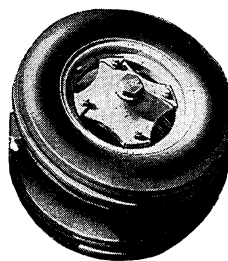
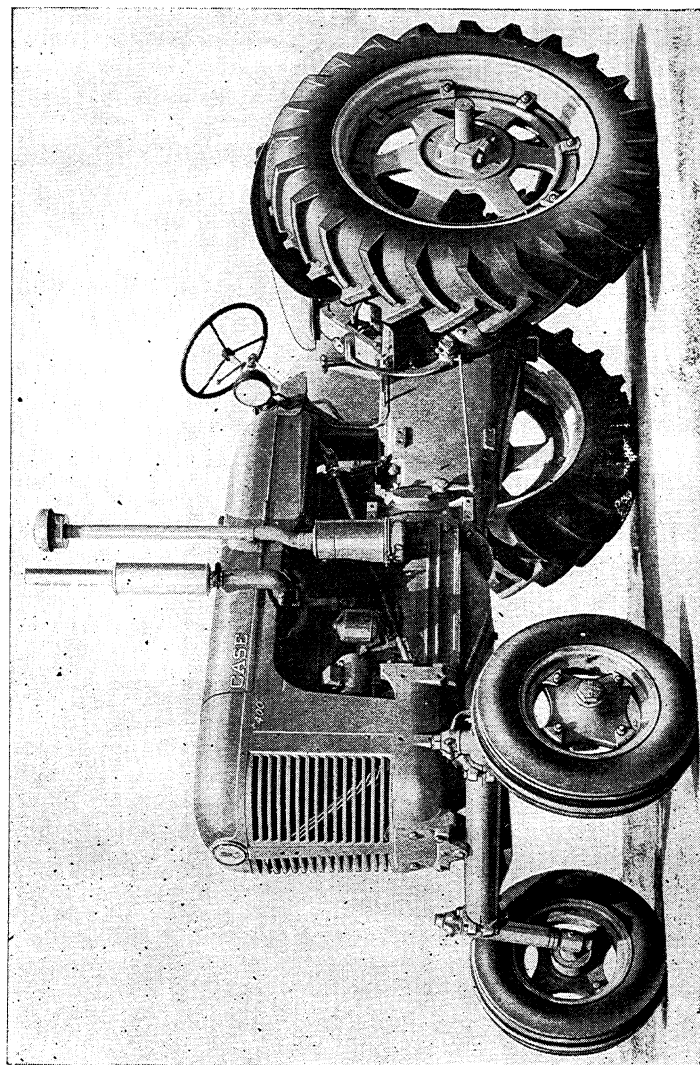
**MODEL 411
GENERAL
PURPOSE
TRACTOR**

3 *Tractors In* **1**

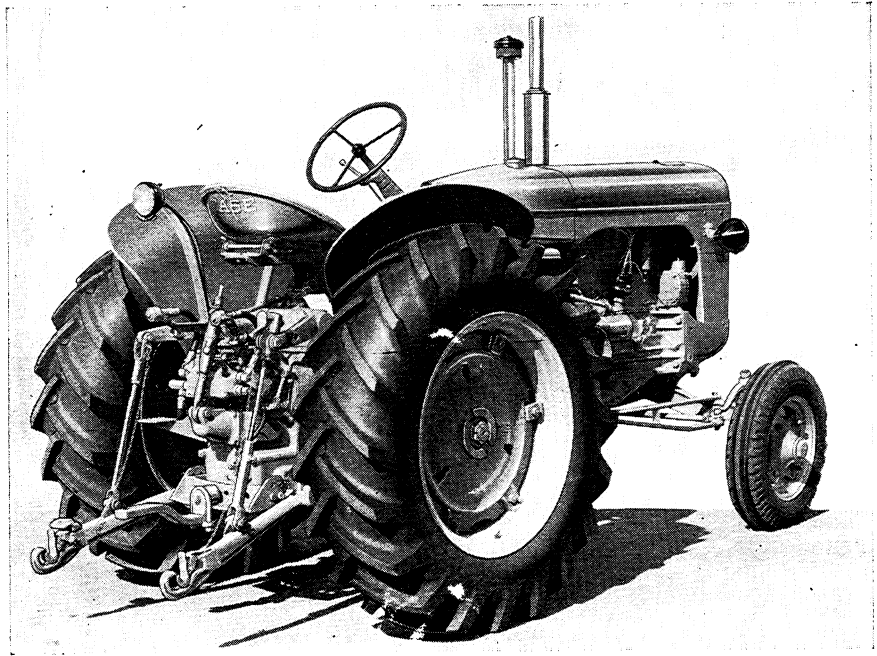
Adjustable
Front Axle
Attachment



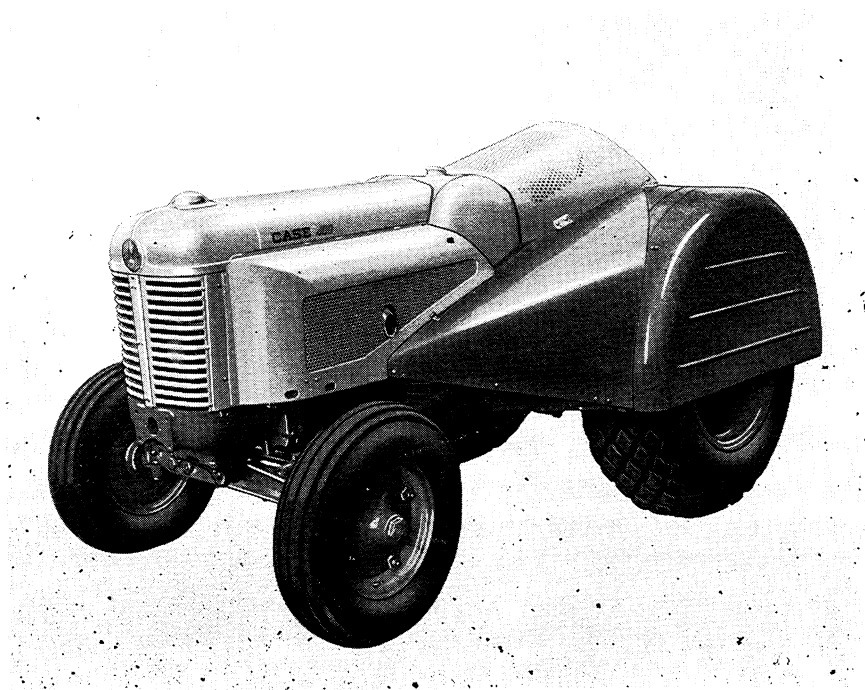
Single
Front
Wheel
Attachment



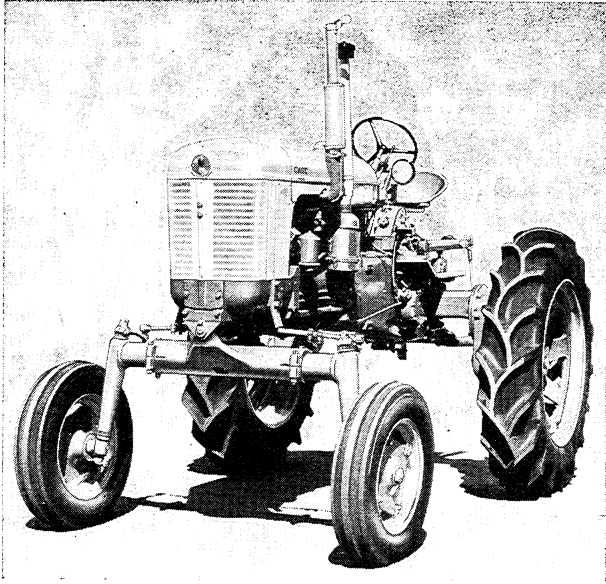
Dual
Front
Wheel
Attachment



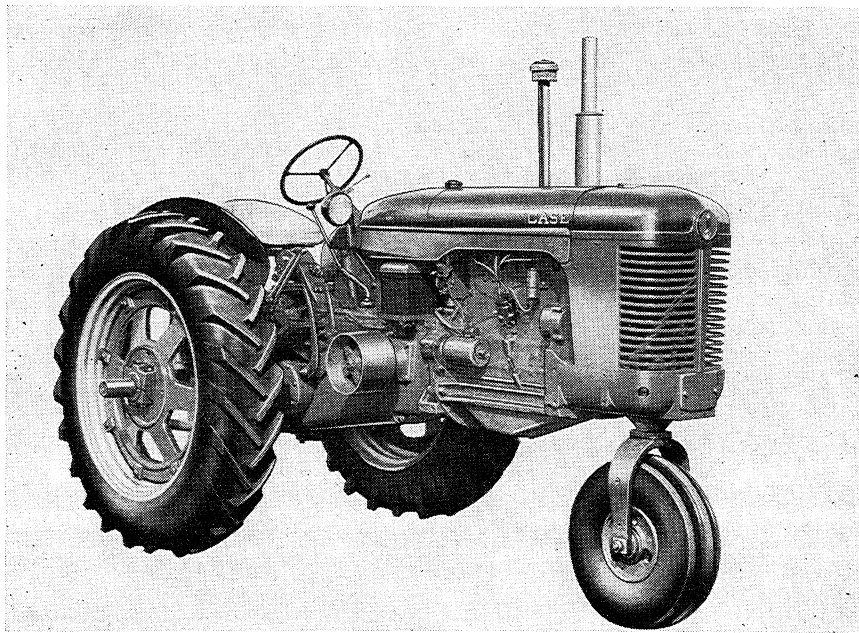
Model 410 Standard 4 Wheel Tractor Equipped With Eagle Hitch



Model 414 Orchard Grove Tractor

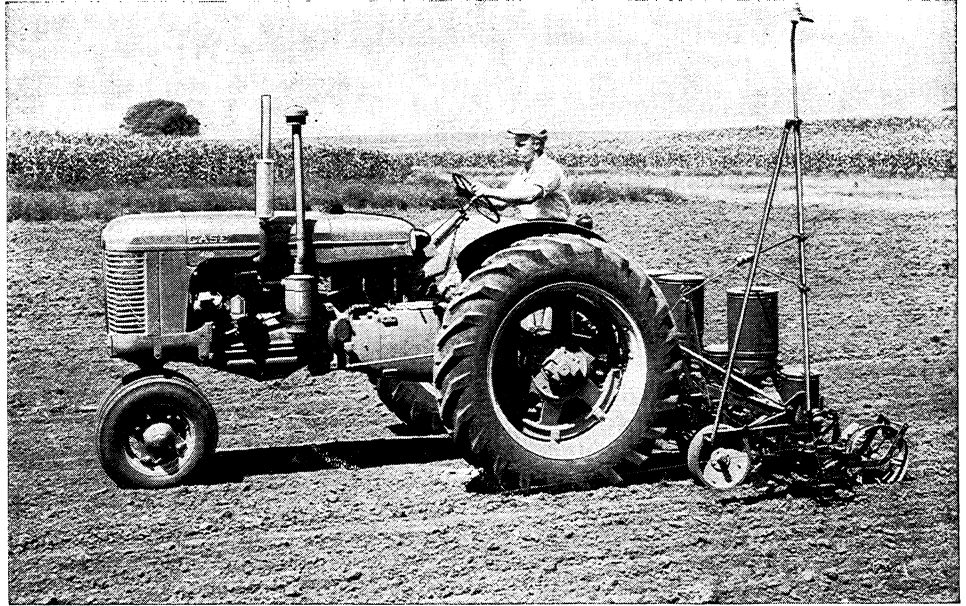


400 Series High Clearance Tractor



Model 411 General Purpose Tractor (Single Front Wheel)

INTRODUCTION



Model 411 General Purpose Tractor (Dual Front End)

The Case 400 Series Tractor is powered by a rugged four cylinder spark ignition engine which features heavy duty precision type construction usually found only in diesel engines. This engine is noted for its quiet operating characteristics and economy of operation.

Advanced engineering also includes the following outstanding features on the 400 Series Tractors.

Powr-range Transmission

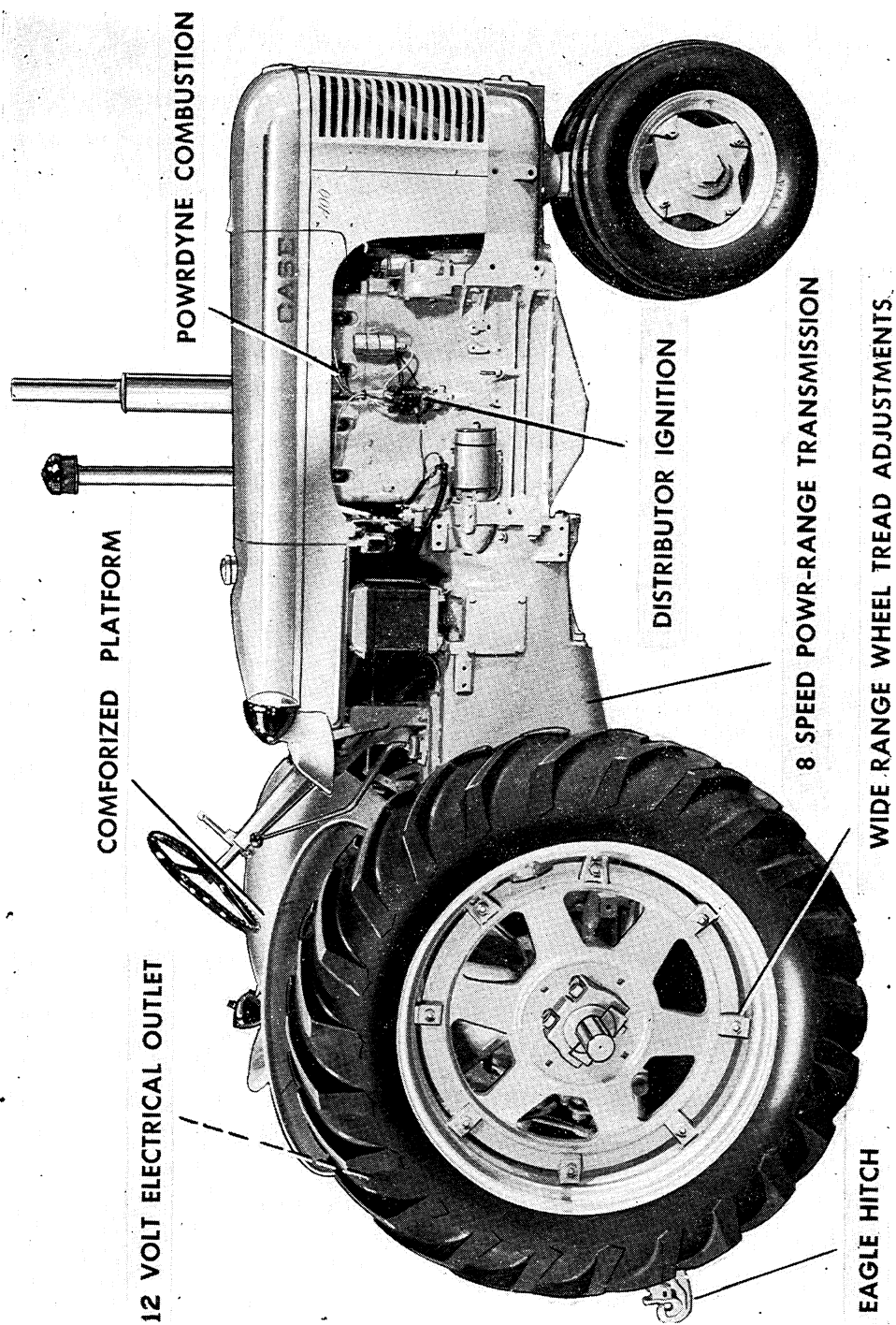
The Case Powr-range transmission, 8 speeds forward and 2 reverse, provides a working speed for every job on the farm in any type or condition of soil. The high speed (8th) road gear brings your fields closer to the farm yard in terms of non-productive time spent on the road.

“Comforized” Platform

The “Comfort Seat,” easily accessible operating controls, lighted EZ-Read instruments; all features designed with the operator’s comfort in mind are standard equipment on Case 400 Series Tractors.

Wide Range of Easily Adjustable Wheel Spacings

Both front and rear wheel treads can be adjusted on **all** 400 Series Tractors for the various row spacings in a matter of minutes. One man can easily move the tire and rim to any of the tread positions.



SERIAL NUMBER

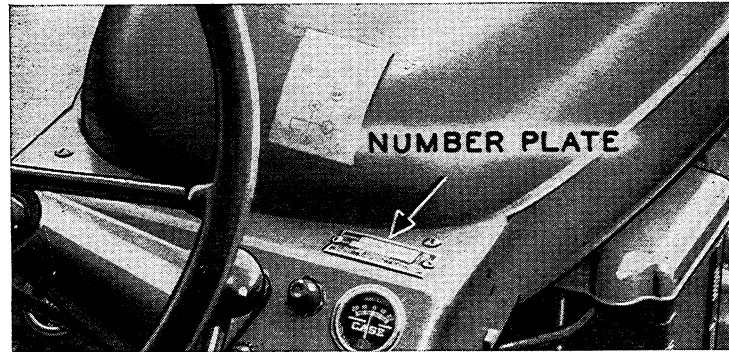


Figure 1

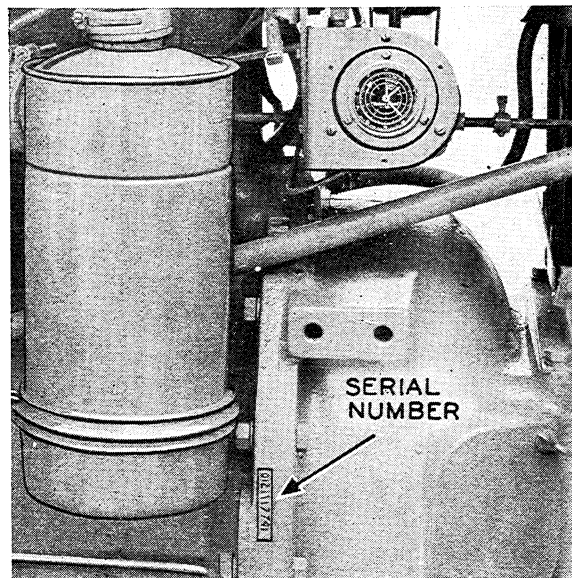


Figure 2

When ordering parts from your Authorized Case Dealer and in all contacts or correspondence with your dealer relative to the tractor, always specify the Serial Number and Model of your tractor.

The model and serial number are stamped on the number plate located on the instrument panel Figure 1. The serial number is also stamped on the left rear side of the engine block near the air cleaner, Figure 2.

For reference, fill in the Serial number and Model of your 400 Series Tractor in the space provided below.

Model No......

Serial No......

GENERAL SPECIFICATIONS FOR CASE 400 SERIES TRACTORS (Spark Ignition Engine) ENGINE

General

Type.....	4 Cylinder, 4 Stroke Cycle, Valve-in-Head, Spark Ignition Engine
Firing Order.....	1-3-4-2
Bore.....	4 Inches
Stroke.....	5 Inches
Piston Displacement.....	251 Cubic Inches
Cylinder Sleeves.....	Removable, Wet Type
Full Governed Engine Speed at No Load (Approximate).....	1665 RPM
Full Governed Engine Speed at Full Load.....	1500 RPM
Engine Idling Speed.....	600 RPM
Valve Tappet Clearance.....	Inlet .012 Inch (Cold) Exhaust .020 Inch (Cold)
Exhaust Valve Rotators.....	Positive Type
Engine Hour Meter.....	Extra Equipment

Piston Rings

Rings Per Piston.....	4
Number of Compression Rings.....	3
Number of Oil Rings.....	1

Piston Pins

Type Pins.....	Full Floating Type
----------------	--------------------

Connecting Rods

Type Bearings.....	Replaceable Precision, Steel Back, Tin Base Babbit Inserts
--------------------	---

Main Bearings

Number of Bearings.....	5
Type Bearings.....	Replaceable Precision, Steel Back, Tin Base Babbit Inserts

Engine Lubricating System

Oil Pressure.....	35 to 40 Pounds with Engine Warm and Operating at Full Governed RPM
Type System.....	Forced Circulation
Oil Pump.....	Gear Type, Floating Oil Screen Inlet
Oil Filter.....	Replaceable Element

IGNITION AND ELECTRICAL SYSTEM

Type of System	12 Volt, Negative Ground
Batteries	One 12 Volt Battery (Group 3SM 70 Ampere Hours at 20 Hour Rate)
Generator	12 Volt, 3 Brush Type (3rd Brush Non-adjustable)
Voltage Regulator	Automatic Type, Mounted on Generator
Starting Motor	12 Volt, Drive Assembly Located in Clutch Housing (Sealed from Dust)
Headlights	12 Volt, 35 Watt, Sealed Tractor Unit
Rear Light	Combination Red Tail Light for Safe Night Road Travel and White Flood Light for Night Work
Rear Light Bulb Sizes	Large — 32 C.P. Single Contact 12 Volt Small — 1 C.P. Single Contact 12 Volt
Instrument Panel Light Bulb Size	3 C.P. Single Contact, 12 Volt
Fuse	20 Ampere Fuse (Located on Underside of Light switch)
Electrical Outlet Socket	12 Volt; Used for Auxiliary Tail Light on (Standard Equipment General Implements or Trailers and for Plugg- Purpose, Standard 4 Wheel ing in a 12 Volt Battery Charger, etc. and Orchard Grove Tractors) (Extra Equipment on High Clearance Tractor)
Red Warning Lamp	12 Volt; For use with Electrical Outlet Socket (Extra Equipment) and Pull Behind Equipment
Distributor Ignition (Standard Equipment)	
Automatic Advance	26°
Distributor Contact Point Gap	.020 inch
Magneto Ignition (Optional Equipment)	
	Case Model 41
Magneto Advance	25°
Magneto Point Gap	.010 inch
Spark Plugs	Champion 8 Commerical, AC 85S Commercial or Equivalent
Thread	18MM
Gap	.025 Inch
Shank Length	1½ Inch

FUEL SYSTEM

Fuel System Gravity Flow

Carburetor

Float Level $\frac{1}{4}$ Inch From Gasket to Nearest Surface of Float

Load Jet Adjustable

Flange SAE $1\frac{1}{4}$ Inch

Fuel Tank

Fuel Strainer Brass Screen

COOLING SYSTEM

Type of System Pressurized, Thermostat Controlled By-Pass Type;
Forced Circulation (Impeller Type Pump)

Radiator Heavy Duty Tube and Fin Type

Thermostat Starts to Open at 175° to 180°
Fully Open at 195°F.

Radiator Shutters Available as Extra Equipment

Bleed Valve Located on Thermostat Housing;
For Bleeding Air Out of System When Filling

Cooling System Pressure 4PSI

Pressure Cap Cooling System Requires a 4PSI Pressure Cap

TRACTION CLUTCH

Type Clutch

All Models Except 414 Foot Operated Spring Loaded 12 inch
Single Disc Type; Sealed Prepacked
Throwout Bearing. (Throwout
Collar has Pressure Fitting.)

Model 414 Orchard Grove Tractor Hand Operated, Spring Loaded
12 Inch Single Disc Type; Sealed
Prepacked Throwout Bearing

TRANSMISSION AND DIFFERENTIAL

Transmission Case Heavy Cast Iron One Piece Unit Construction
Containing All Gears, Shafts, Bearings,
Differential and Final Drive

Power-range Transmission 8 Speeds Forward, Two Reverse

Final Drive Heavy Duty Gear Drive

BRAKES

Type Heavy Duty, Double Disc,
Self Energizing Differential Brakes

Brake Pedals Can be Locked Together for Road Travel;
Can Be Used Individually For Steering Assistance

Thank you so much for reading.
Please click the “Buy Now!”
button below to download the
complete manual.



After you pay.

You can download the most
perfect and complete manual in
the world immediately.

Our support email:

ebooklibonline@outlook.com