

Maxxum Tractors
5220, 5230, 5240 and 5250
P.I.N. JJF1050700 and After
Operators Manual

Don 9- 27323






THIS SAFETY ALERT SYMBOL INDICATES IMPORTANT SAFETY MESSAGES IN THIS MANUAL. WHEN YOU SEE THIS SYMBOL, CAREFULLY READ THE MESSAGE THAT FOLLOWS AND BE ALERT TO THE POSSIBILITY OF PERSONAL INJURY OR DEATH.

M171B

If Safety Decals on this machine use the words **Danger, Warning or Caution**, which are defined as follows:

- **DANGER:** Indicates an immediate hazardous situation which if not avoided, will result in death or serious injury. The color associated with Danger is RED.
- **WARNING:** Indicates an potentially hazardous situation which if not avoided, will result in serious injury. The color associated with Warning is ORANGE.
- **CAUTION:** Indicates an potentially hazardous situation which if not avoided, may result in minor or moderate injury. It may also be used to alert against unsafe practices. The color associated with Caution is YELLOW.

If Safety Decals on this machine are ISO two panel Pictorial, decals are defined as follows:

- The first panel indicates the nature of the hazard.
- The second panel indicates the appropriate avoidance of the hazard.
- Background color is YELLOW.
- Prohibition symbols such as   and  if used, are RED.



WARNING

IMPROPER OPERATION OF THIS MACHINE CAN CAUSE INJURY OR DEATH. BEFORE USING THIS MACHINE, MAKE CERTAIN THAT EVERY OPERATOR:

- Is instructed in safe and proper use of the machine.
- Reads and understands the Manual(s) pertaining to the machine.
- Reads and understands ALL Safety Decals on the machine.
- Clears the area of other persons.
- Learns and practices safe use of machine controls in a safe, clear area before operating this machine on a job site.

It is your responsibility to observe pertinent laws and regulations and follow Case Corporation instructions on machine operation and maintenance.

CASE TECHNICAL MANUALS

Manuals are available from your Dealer for the operation, service and repair of your machine. For prompt convenient service, contact your Dealer for assistance in obtaining the manuals for your machine.

Your Dealer can expedite your order for operators manuals, parts catalogs, service manuals and maintenance records.

Always give the Machine Name, Model and P.I.N. (product identification number) or S.N. (serial number) of your machine so your Dealer can provide the correct manuals for your machine.

CALIFORNIA

Proposition 65 Warning

Diesel engine exhaust and some of its constituents are known to the State of California to cause cancer, birth defects, and other reproductive harm.

NOTE: Case Corporation reserves the right to make improvements in design or changes in specifications at any time without incurring any obligation to install them on units previously sold.

TO THE OWNER

Use this manual as your guide. If you follow the instructions given in this manual, your tractor will work well for many years. Refer to the detailed index at the end of this manual for locating specific items regarding your tractor.

NOTE: *Some information, illustrations and photographs in this manual may differ to the standard equipment and accessories on your tractor. See your dealer for further information.*

Your Dealer can give you assistance with Case made parts and persons with special training that know the best methods of repair and maintenance for your tractor.

Call your Case Dealer if you need any assistance or information.

5250 TRACTOR with Mechanical Front Drive (MFD)



F02808

NOTE: *The right and left of the tractor in this manual are the same as your right and left when sitting in the tractor seat looking forward.*

TRIM THIS EDGE

TRIM THIS EDGE

RIGHT PAGE

TO THE OWNER

5230 ROPS TRACTOR with Two Wheel Drive



F03110

TRIM THIS EDGE

5240 HIGH CLEARANCE TRACTOR



D14124

2

TRIM THIS EDGE

LEFT PAGE

TO THE OWNER _____

Operators Manual Storage

Always keep the operators manual in the storage compartment provided on your tractor. The operators manual must be available for use by all operators.

IMPORTANT: *This operators manual is part of your tractor. If the tractor is sold, loaned or rented the operators manual MUST go with it.*



CAB TRACTOR



ROPS TRACTOR

TRIM THIS EDGE

TRIM THIS EDGE

RIGHT PAGE

GENERAL TABLE OF CONTENTS

IDENTIFICATION NUMBERS	6
SAFETY/DECALS	8
INSTRUMENTS/CONTROLS	18
OPERATING INSTRUCTIONS	48
FIELD OPERATION	95
TIRES/WHEELS/SPACING/BALLAST	139
LUBRICATION/FILTERS/FLUIDS	186
MAINTENANCE/ADJUSTMENTS	229
ELECTRICAL SYSTEM	243
MACHINE STORAGE	259
SPECIFICATIONS	261



TRIM THIS EDGE

TRIM THIS EDGE

RIGHT PAGE

IDENTIFICATION NUMBERS

PRODUCT IDENTIFICATION AND SERIAL NUMBERS

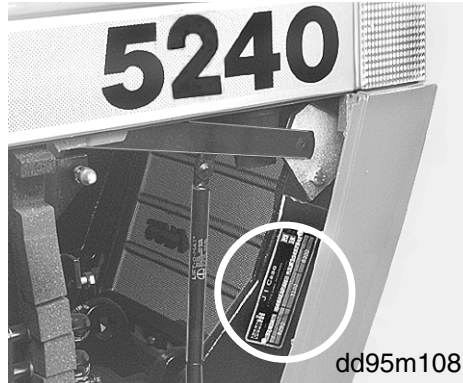
Write your machine Model number, Product Identification Number (P.I.N.), and Serial numbers on the lines provided below. If needed, give these numbers to your Case dealer when you need parts or information for your machine.

Make a record of the numbers. Keep the record in a safe place. If the machine is stolen, report the numbers to your local law enforcement agency.

Serial Number Locations

TRIM THIS EDGE

TRACTOR



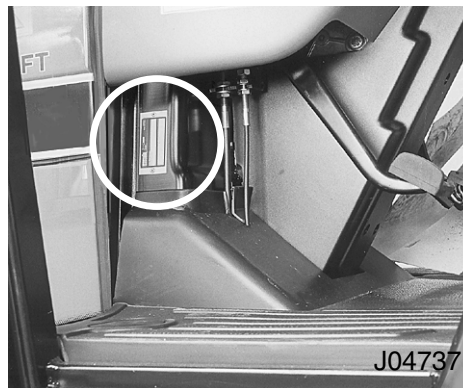
Model Number _____
Product Identification Number _____

TRACTOR



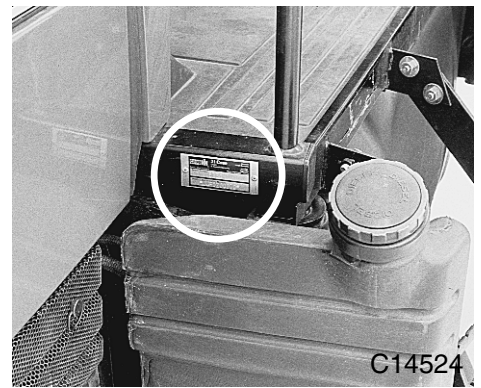
Model Number _____
Product Identification Number _____

TRACTOR - WITH CAB



Model Number _____
Product Identification Number _____

TRACTOR - WITH ROPS FRAME



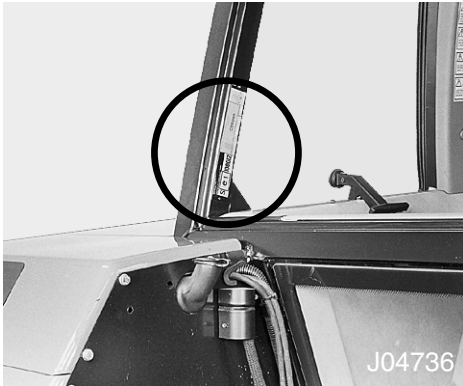
Model Number _____
Product Identification Number _____

TRIM THIS EDGE

LEFT PAGE

IDENTIFICATION NUMBERS

CAB



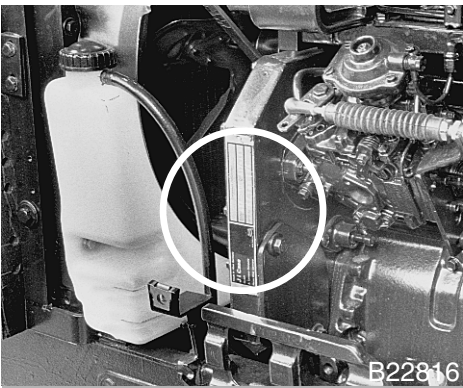
Serial Number _____

ROPS FRAME



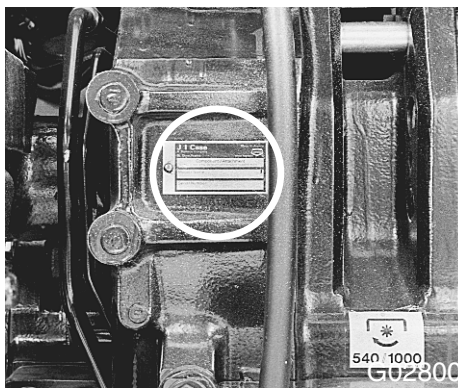
Serial Number _____

ENGINE



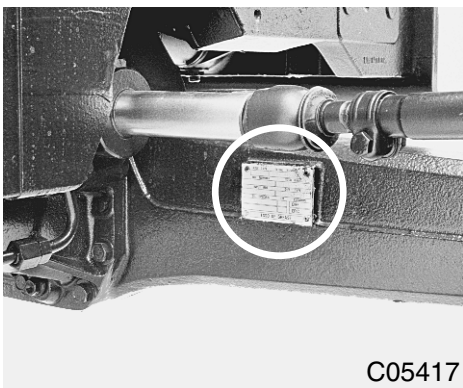
Serial Number _____

TRANSMISSION



Serial Number _____

MFD AXLE



Serial Number _____



TRIM THIS EDGE

TRIM THIS EDGE

RIGHT PAGE

SAFETY/DECALS



Before operating, read and comply with the operators manual and safety instructions.

Understand that your safety and the safety of other persons is measured by how you service, and operate this machine. Know the positions and operations of all controls before you try to operate. **MAKE SURE YOU CHECK ALL CONTROLS IN A SAFE AREA BEFORE STARTING YOUR WORK.**

READ THIS MANUAL COMPLETELY and make sure you understand the controls. All equipment has a limit. Make sure you understand the speed, brakes, steering, stability, and load characteristics of this machine before you start to operate.

The safety information given in this manual does not replace safety codes, insurance needs, federal, state and local laws. Make sure your machine has the correct equipment needed by the local laws and regulations.

CASE is continuing to work for your safety: by making tractors with better protection and by giving these rules for safe operation.



THIS SAFETY ALERT SYMBOL INDICATES IMPORTANT SAFETY MESSAGES IN THIS MANUAL. WHEN YOU SEE THIS SYMBOL, CAREFULLY READ THE MESSAGE THAT FOLLOWS AND BE ALERT TO THE POSSIBILITY OF PERSONAL INJURY OR DEATH.

M171B

TRIM THIS EDGE

TRIM THIS EDGE

LEFT PAGE

Buy Now



Our support email:

ebooklibonline@outlook.com