

1170 Tractor

Operators Manual

9-2751



Reprinted



This symbol means ATTENTION! BECOME ALERT! YOUR SAFETY IS INVOLVED. The message that follows the symbol contains important information about your safety. Carefully read the message. Make sure you fully understand the causes of possible injury or death.

SB001

IF THIS MACHINE IS USED BY AN EMPLOYEE, IS LOANED, OR IS RENTED, MAKE SURE THAT THE OPERATOR UNDERSTANDS THE TWO INSTRUCTIONS BELOW.

BEFORE THE OPERATOR STARTS THE ENGINE:

1. GIVE INSTRUCTIONS TO THE OPERATOR ON SAFE AND CORRECT USE OF THE MACHINE.
2. MAKE SURE THE OPERATOR READS AND UNDERSTANDS THE OPERATOR'S MANUAL FOR THIS MACHINE.



IMPROPER OPERATION OF THIS MACHINE CAN CAUSE INJURY OR DEATH.

BEFORE STARTING THE ENGINE, DO THE FOLLOWING:

1. READ THE OPERATOR'S MANUAL.
2. READ ALL SAFETY DECALS ON THE MACHINE.
3. CLEAR THE AREA OF OTHER PERSONS.

LEARN AND PRACTICE SAFE USE OF MACHINE CONTROLS IN A SAFE, CLEAR AREA BEFORE YOU OPERATE THIS MACHINE ON A JOB SITE.

It is your responsibility to observe pertinent laws and regulations and to follow manufacturer's instructions on machine operation and maintenance.

See your Authorized Case dealer for additional operator's manuals, parts catalogs, and service manuals.

TO THE PURCHASER OF A CASE TRACTOR

The care you give your Case Tractor will greatly determine the satisfaction and service you will obtain from it. Use this manual as your guide. By observing the instructions and suggestions in this manual, your Case Tractor will serve you well for many years.

As an Authorized Case Dealer, we stock Genuine Case Parts, which are manufactured with the same precision and skill as the original equipment. Our factory trained staff is kept well informed on the best methods of servicing Case equipment and is ready and able to help you.

Should you require additional aid or information, contact us.

Your Authorized Case Dealer



**LOOK FOR THIS SYMBOL TO POINT
OUT IMPORTANT SAFETY PRECAUTIONS**

**TO INSURE EFFICIENT AND PROMPT SERVICE, PLEASE
FURNISH US WITH THE MODEL, SERIAL, ENGINE AND
TRANSMISSION SERIAL NUMBERS OF YOUR TRACTOR IN ALL
CORRESPONDENCE OR CONTACTS.**

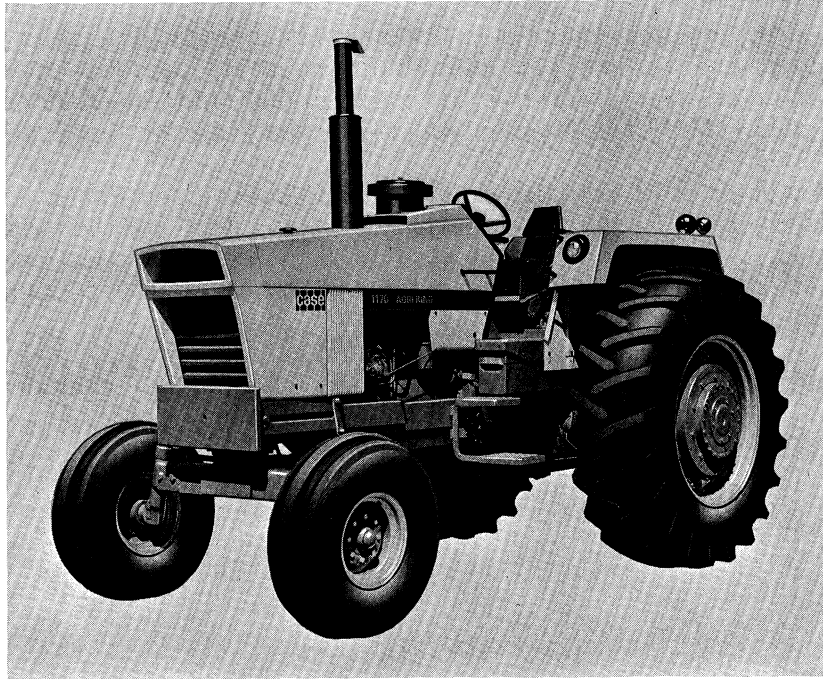


Figure 1

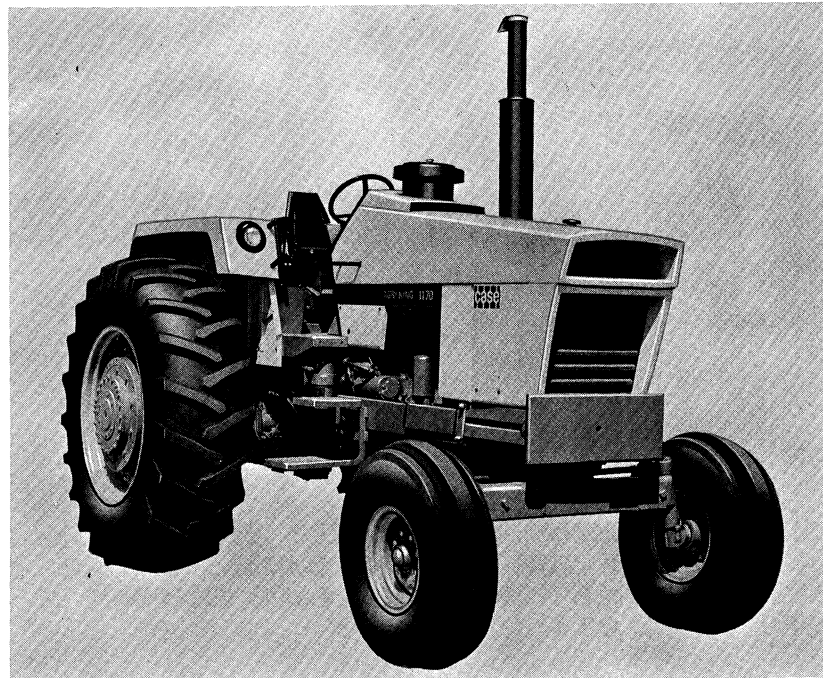


Figure 2

SERIAL NUMBERS

When ordering parts from your Authorized Case Dealer and in all contacts or correspondence with your dealer, relative to the Tractor always specify the Model, Serial, Engine and Transmission Serial Numbers of your Tractor.

The Model and Serial Numbers are stamped on the number plate located on the outside and lower left hand side of the fire wall assembly, Figure 3. The Engine Number is stamped on a plate fastened to the rear right hand side of the engine block, Figure 4. The transmission Serial Number is stamped on a plate and fastened to the right hand side and to the front of the axle on the transmission housing, Figure 5.

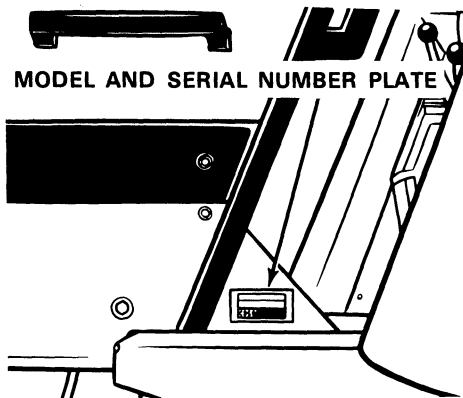


Figure 3

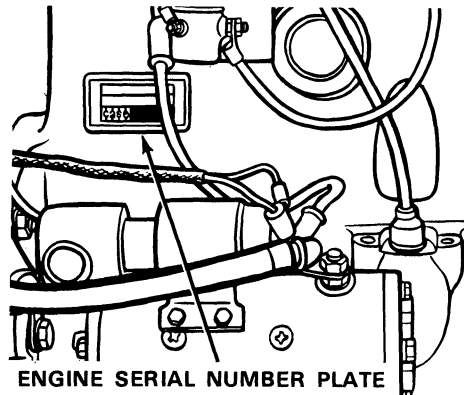


Figure 4

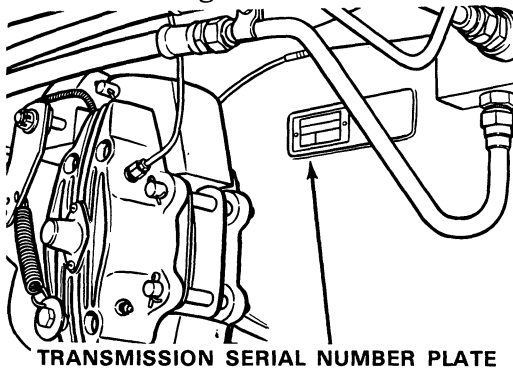


Figure 5

NOTE The terms "Right Hand" and "Left Hand" whenever used in this manual, apply to the tractor when facing in the direction the tractor will move in forward operation.

For reference, fill in the Serial Numbers of your tractor in spaces provided below.

Model Designation _____

Tractor Serial Number _____

Engine Serial Number _____

Transmission Serial Number _____

Diesel Engine

SPECIFICATIONS

General

Type	6 Cylinder, 4 ¹ Stroke Cycle, Valve-in-head, Turbo Charged.
Firing Order	1-5-3-6-2-4
Bore	4-3/8 Inches
Stroke	5 Inches
Piston Displacement	451 Cubic Inches
Compression Ratio	16.5 to 1
Cylinder Sleeves	Removable Wet Type
No Load Governed Speed	2260 RPM
Rated Engine Speed	2100 RPM
Engine Idling Speed	725 RPM
*Valve Tappet Clearance (Exhaust)	(Hot) .020 Inch (Cold) .025 Inch
(Intake)	(Hot and Cold) .015 Inch

*Hot Settings Are Made After The Engine Has Operated At Thermostat Controlled Temperature For At Least Fifteen Minutes.

Piston and Connecting Rod

Rings per Piston	3
Number of Compression Rings	2
Number of Oil Rings	1
Type Pins	Full Floating Type
Type Bearing	Replaceable Precision, Steel Back, Copper-Lead Alloy Liners.

Main Bearings

Number of Bearings	7
Type Bearings	Replaceable Precision Steel Back, Copper-Lead Alloy Liners.

Engine Lubricating System

Oil Pressure 45 to 55 Pounds with Engine Warm and Operating at Rated Engine Speed.

Type System Pressure and Spray Circulation

Oil Pump Gear Type

Oil Filter Full Flow Spin on Type

Fuel System

Fuel Injection Pump Robert Bosch, Type PES
(Multiple Plunger.)

Pump Timing 30 Degrees Before Top Dead Center (Port Closing).

Fuel Injectors Pencil Type
(Opening Pressure 2800 PSI).

Fuel Transfer Pump Plunger Type, Integral Part of Injection Pump.

Governor Variable Speed, Fly-Weight Centrifugal Type; Integral Parts of Injection Pump.

1st Stage fuel filter Full Flow Spin on Type

2nd Stage fuel filter Full Flow Spin on Type

Fuel Tank Water Trap and Drain Located in Base of Fuel Tank.

Fuel Tank Capacity 50 U. S. Gallons

Fuel Level Gauge Electric, Located on Instrument Panel.

Hand Primer Pump Located on Fuel Filter Head

Fuel Tank Fuel Filter Located in Fuel Shut-Off Valve in Base of Fuel Tank

general specifications

Cooling System

Capacity	40 U.S. Quarts
Type of System	Pressurized, Thermostat Controlled By-Pass Type: Forced Circulation, (Impeller Type Pump).
Radiator	Heavy Duty Fin and Tube Type
Thermostat	Starts to Open at Approximately 180°F., Fully Open at 202°F.
Pressure Cap Required	(w/o Cab Air Conditioner) 7 PSI
Pressure Cap Required	(w/Cab Air Conditioner) 14 PSI

When using a proper operating radiator pressure cap, the engine temperature can safely rise to 230°F.

Electrical System

Type of System	12 Volt Negative Ground
Batteries	(2) 12 Volt Batteries Connected in parallel. Group Size 30H, Rated at 1.255 to 1.265 Specific Gravity. Discharge Rate 300 Amps at 0°F. Voltage Drops to 9.2 after 10 seconds. Voltage drops 1.0 Volt per cell after 4 min.
Alternator	12 Volt 55 Amp Output
Voltage Regulator	12 Volt, Solid State, Mounted on Alternator.
Starter Motor	12 Volt with Solenoid Switch
Head Lights (2)	12 Volt, 35 Watt, Sealed Beam
Flood Lights (2)	12 Volt, 35 Watt, Sealed Beam
Amber Warning Light	12 Volt, Double Face, Flasher Type
Rear Tail Light	12 Volt, 60 Watt Sealed Beam Combination Tail and Flood Lamp.
Circuit Breaker System over Load check	12 Volt Twin 40 AMP Breakers connected in parallel, 80 AMP rating. 60 Amp. Min. Continuous capacity.
Lights Circuit Breaker	30 Amp., Located on Light Switch
Parking Brake Warning Light	12 Volt, Red Flasher Type
Transmission Oil Filter Warning Light	12 Volt, Red Flasher Type

Parking Brake

Type Cable Actuated by Orchlin
Type Handle-Adjustable from
Operator's Seat, With Adjustable
and Replaceable Lining Pads.

Hydraulic Power Assist Brakes

Type Hydraulic, Power Assisted,
Self-Adjusting Caliper Disc Type
Differential Brakes, With Replaceable
Lining Pads.

Mechanical Transmission

Type 2 Speed Gear Range With
a 4 Speed Gear Section.

Gear Selection 8 Speeds Forward - 2 Speeds Reverse

Shifting Mechanical With Plunger Type
Locks and Tube Type Interlocks.

Rear Axle

Type Spiral Bevel With Planetary
Reduction in Hub.

Hydrostatic Power Steering

Pump Type Gear Type, Driven By The Engine.

Pump Capacity at 2000 Engine RPM 8 GPM

Hand Pump Type Gerotor Bi-Directional Driven
By the Steering Wheel.

Steering Cylinders Two Double Acting Cylinders

Remote Hydraulic System

Pump Gear Type, Driven By the Engine .
Type Valve Dual Valve-Individual Hand Lever Control.
Portable Cylinder Coupling Case Quick Detachable
Break-away Type.
Pump Capacity at 2000 Engine RPM 16 GPM
Relief Valve Pressure 2050 to 2250 PSI
Portable Cylinders Available

Power Take-Off

Type Hydraulically Operated
Rotation Clockwise
Spline Size 540 RPM6 Splines 1-3/8 Dia.
1000 RPM 21 Splines1-3/8 Dia.
Engine Speed 1900 RPM 540 or 1000 RPM Shaft Speed

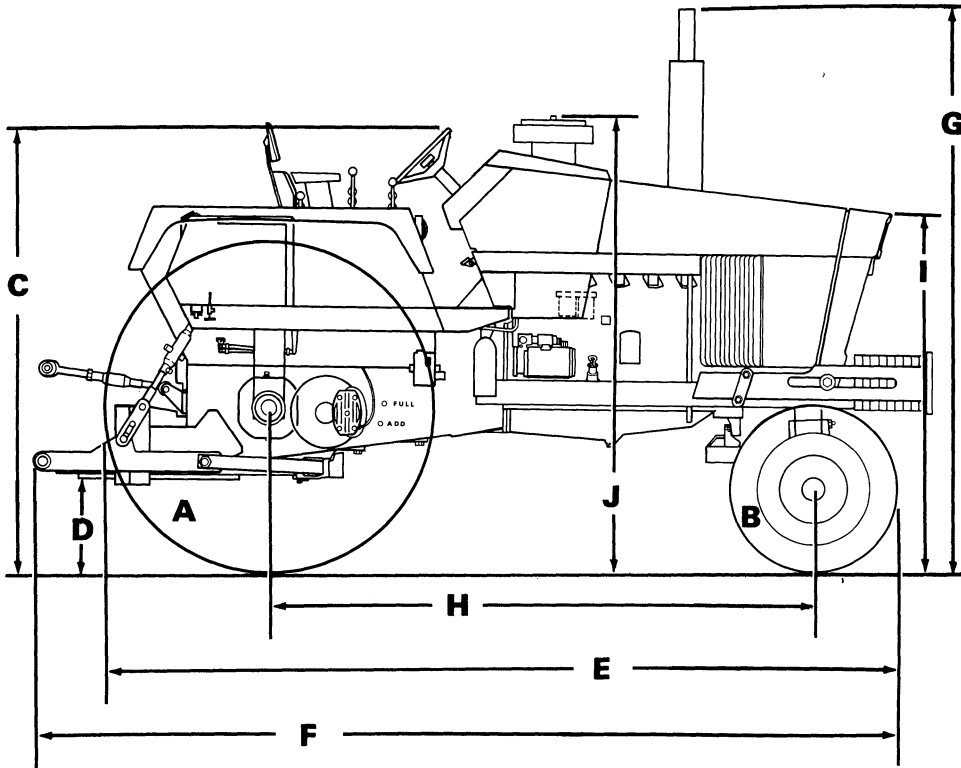
Draft-O-Matic System

Type of sensing Lower Link
Type Control Hand Lever
Type Valve 3 Positions - Raise - Hold - Lower
Type Draft Arms Swinging, with Manual Float Adjustment
Type Hitch 3 Point Category II

Drawbar

Standard or Yoke Type Full Swinging Roller Mounted, Will
Accommodate a 1-1/2 Inch Dia. Pin.

APPROXIMATE OVERALL MEASUREMENTS



Model	A	B	C	D	E	F	G	H	I	J
Adjustable	20.8-38R1	10.00-16F2	87	21	160	172	114	108	72	84

A and B Tire Sizes

C thru J Dimensions in Inches

APPROXIMATE TRAVEL SPEEDS IN MPH

Mechanical Range	Transmission Gear				MPH
	1	2	3	4	
1	1.9	2.8	3.9	4.8	
2	6.0	8.5	12.0	15.0	

APPROXIMATE WEIGHT

1170 Tractor 13,800 Pounds

TIRE AND WHEEL EQUIPMENT

Front

TIRE SIZE	TIRE PLY	RIM SIZE	TREAD TYPE	TIRE PRESSURE
7.50-16	8	550F-16	F2	40
9.50-20	6	W7L-20	F2	40
10.00-16	8	W8L-16	F2	36
11.00-16	6	W8L-16	F2	28
11.00-16	8	W8L-16	F2	36
11.00-16	8	W8L-16	F2	36
14.00L-16A	6	W11L-16A	F2	24

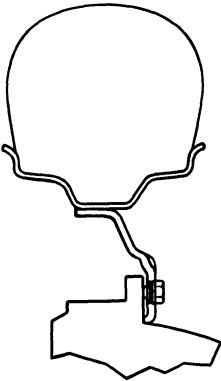
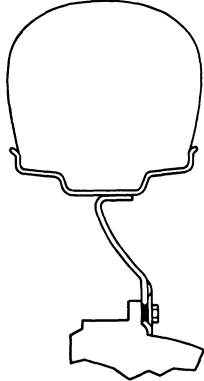
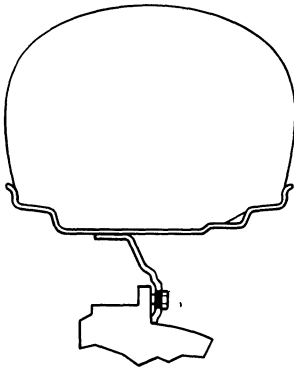
Rear

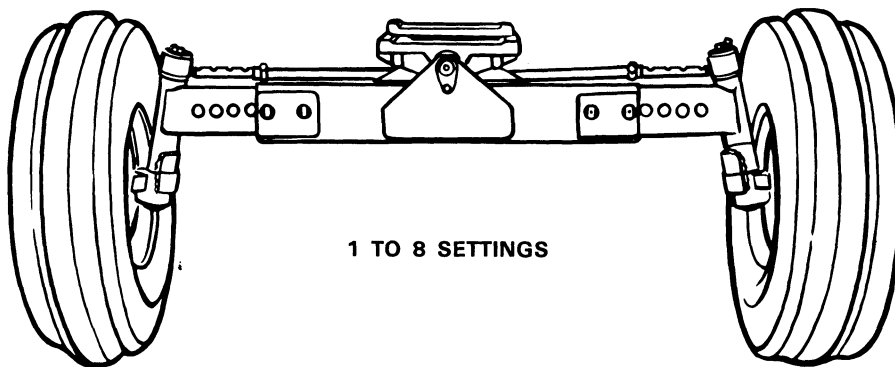
TIRE SIZE	TIRE PLY	RIM SIZE	TREAD TYPE	TIRE PRESSURE
15.5-38	10	W14-38	R1&R2	30
18.4-38	8	W16L-38	R1&R2	20
20.8-38	8	W18L-38	R1&R2	18

NOTE Keep tires inflated to recommended pressures. Check pressures at least every 60 hours of operation or once a week, whichever occurs first. Do not reduce rear tire pressure to increase traction. When plowing, increase furrow wheel tire pressure 4 PSI.

FRONT WHEEL TREAD SPACING (With Wheels Dished In Only)

ADJUSTABLE AXLE SPACING INCHES

1-1/4" OFFSET WHEEL	1-1/2" OFFSET WHEEL	NON-OFFSET WHEEL
		
60 - 88	59.5 - 87.5	62.5 - 90.5



NOTE Axle spacing listings above are from the narrow setting, (with increments of 4 inches), to the wide setting.

NOTE When tightening the front wheel bolts, torque 70 to 80 ft. lbs.

Buy Now



Our support email:

ebooklibonline@outlook.com