


**1170 Tractor
SN 8675001 and After**

Operators Manual

9-2842

Reprinted




CASE III

	<p><i>THIS SAFETY ALERT SYMBOL INDICATES IMPORTANT SAFETY MESSAGES IN THIS MANUAL. WHEN YOU SEE THIS SYMBOL, CAREFULLY READ THE MESSAGE THAT FOLLOWS AND BE ALERT TO THE POSSIBILITY OF PERSONAL INJURY OR DEATH.</i></p> <p>M171B</p>
---	--

If Safety Decals on this machine use the words **Danger, Warning or Caution**, which are defined as follows:

- **DANGER:** Indicates an immediate hazardous situation which if not avoided, will result in death or serious injury. The color associated with Danger is RED.
- **WARNING:** Indicates an potentially hazardous situation which if not avoided, will result in serious injury. The color associated with Warning is ORANGE.
- **CAUTION:** Indicates an potentially hazardous situation which if not avoided, may result in minor or moderate injury. It may also be used to alert against unsafe practices. The color associated with Caution is YELLOW.

If Safety Decals on this machine are ISO two panel Pictorial, decals are defined as follows:

- The first panel indicates the nature of the hazard.
- The second panel indicates the appropriate avoidance of the hazard.
- Background color is YELLOW.
- Prohibition symbols such as   and  if used, are RED.

WARNING

IMPROPER OPERATION OF THIS MACHINE CAN CAUSE INJURY OR DEATH. BEFORE USING THIS MACHINE, MAKE CERTAIN THAT EVERY OPERATOR:

- Is instructed in safe and proper use of the machine.
- Reads and understands the Manual(s) pertaining to the machine.
- Reads and understands ALL Safety Decals on the machine.
- Clears the area of other persons.
- Learns and practices safe use of machine controls in a safe, clear area before operating this machine on a job site.

It is your responsibility to observe pertinent laws and regulations and follow Case Corporation instructions on machine operation and maintenance.

TO THE PURCHASER OF A CASE TRACTOR

The care you give your Case Tractor will greatly determine the satisfaction and service you will obtain from it. Use this manual as your guide. By observing the instructions and suggestions in this manual, your Case Tractor will serve you well for many years.

As an Authorized Case Dealer, we stock Genuine Case Parts, which are manufactured with the same precision and skill as the original equipment. Our factory trained staff is kept well informed on the best methods of servicing Case equipment and is ready and able to help you.

Should you require additional aid or information, contact us.

Your Authorized Case Dealer



**LOOK FOR THIS SYMBOL TO POINT
OUT IMPORTANT SAFETY PRECAUTIONS.
IT MEANS - ATTENTION! BECOME ALERT!
YOUR SAFETY IS INVOLVED.**

**TO INSURE EFFICIENT AND PROMPT SERVICE, PLEASE
FURNISH US WITH THE MODEL, SERIAL, ENGINE, TRANS-
MISSION AND CAB SERIAL NUMBERS OF YOUR TRACTOR
IN ALL CORRESPONDENCE OR CONTACTS.**

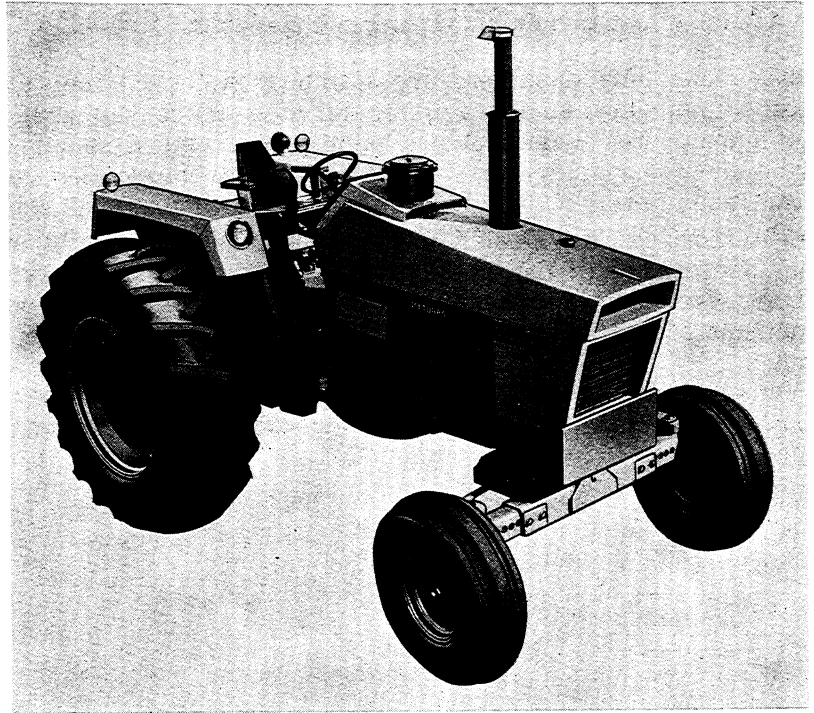


Figure 1

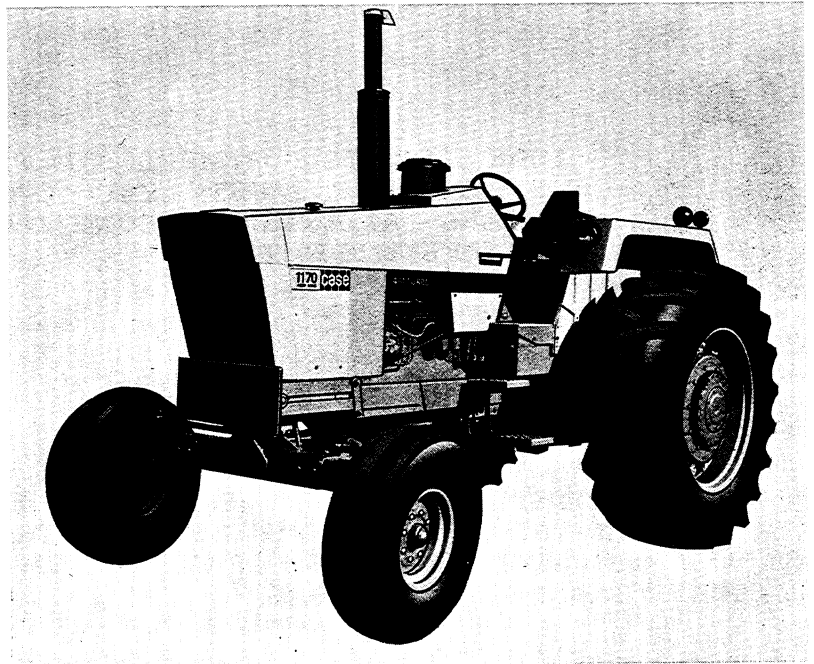


Figure 2

SERIAL NUMBERS

The Model and Serial Numbers are stamped on the number plate located on the outside and lower left hand side of the fire wall assembly, Figure 3. The Engine Serial Number is stamped on a plate fastened to the rear right hand side of the engine block, Figure 4. The transmission Serial Number is stamped on a plate and fastened to the right hand side and to the front of the axle on the transmission housing, Figure 5. The Cab Serial Number is stamped on a plate fastened to the inside right hand support, Figure 6.

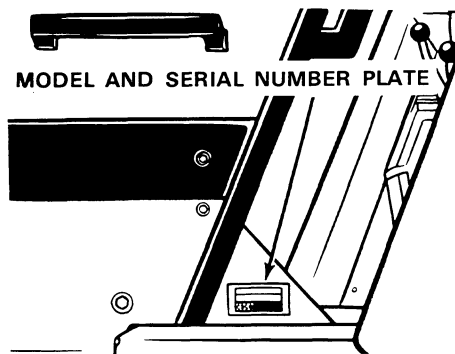


Figure 3

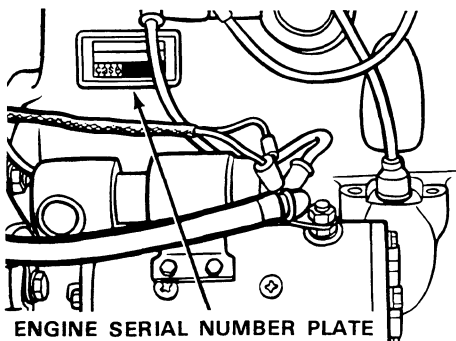


Figure 4

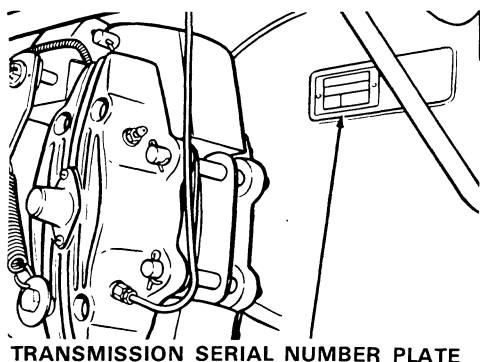


Figure 5

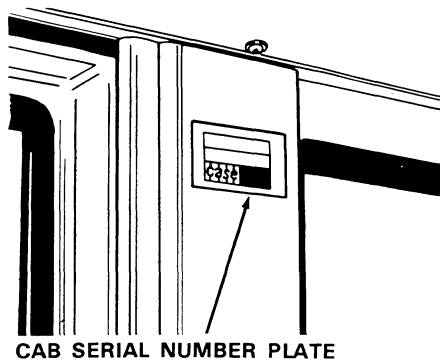


Figure 6

NOTE: The terms "Right Hand" and "Left Hand" whenever used in this manual, apply to the tractor when facing in the direction the tractor will move in forward operation.

For reference, fill in the Serial Numbers of your tractor in the spaces provided below.

Model Designation _____
Tractor Serial Number _____
Engine Serial Number _____
Transmission Serial Number _____
Cab Serial Number _____

Diesel Engine

SPECIFICATIONS

General

Type	6 Cylinder, 4 Stroke Cycle, Valve-in-head, Turbo Charged.
Firing Order	1-5-3-6-2-4
Bore	4-3/8 Inches (111mm)
Stroke	5 Inches (127mm)
Piston Displacement	451 Cubic Inches (7 390.6 cm ³)
Compression Ratio	16.5 to 1
Cylinder Sleeves	Removable Wet Type
No Load Governed Speed	2260 RPM
Rated Engine Speed	2100 RPM
Engine Idling Speed	725 RPM
*Valve Tappet Clearance (Exhaust)	(Hot) .020 Inch (0.508mm) (Cold) .025 Inch (0.635mm)
	(Intake) . (Hot and Cold) .015 Inch (0.381mm)

*Hot Settings Are Made After The Engine Has Operated At Thermostat Controlled Temperature For At Least Fifteen Minutes.

Piston and Connecting Rod

Rings per Piston	3
Number of Compression Rings	2
Number of Oil Rings	1
Type Pins	Full Floating Type
Type Bearing	Replaceable Precision, Steel Back, Copper-Lead or Aluminum Alloy Liners.

Main Bearings

Number of Bearings	7
Type Bearings	Replaceable Precision Steel Back, Copper-Lead or Aluminum Alloy Liners.

Engine Lubricating System

Oil Pressure 45 to 55 PSI (3.2 to 3.9 kg/cm²) with
Engine Warm and Operating at Rated Engine Speed.

Type System Pressure and Spray Circulation

Oil Pump Gear Type

Oil Filter Full Flow Spin on Type

Fuel System

Fuel Injection Pump Robert Bosch, Type PES
(Multiple Plunger.)

Pump Timing 30 Degrees Before Top Dead
Center (Port Closing).

Fuel Injectors Pencil Type
(Opening Pressure 2800 PSI). (196.9 kg/cm²)

Fuel Transfer Pump Plunger Type, Integral Part of
Injection Pump.

Governor Variable Speed, Fly-Weight Centrifugal
Type; Integral Parts of Injection Pump.

1st Stage fuel filter Full Flow Spin on Type

2nd Stage fuel filter Full Flow Spin on Type

Fuel Tank Water Trap and Drain Located in Base
of Fuel Tank.

Fuel Tank Capacity 50 U.S. Gallons (189.3 liters)

Fuel Level Gauge Electric, Located on Instrument
Panel.

Hand Primer Pump Located on Fuel Filter Head

Fuel Tank Fuel Filter Located in Fuel Shut-Off
Valve in Base of Fuel Tank

Preliminary Fuel Filter Located At The Bottom
Of The Fuel Transfer Pump.

general specifications

Cooling System

Capacity 40 U.S. Quarts (37.9 liters)
Type of System Pressurized, Thermostat Controlled
By-Pass Type: Forced Circulation,
(Impeller Type Pump).
Radiator Heavy Duty Fin and Tube Type
Thermostat Starts to Open at Approximately 175°F. (79°C.),
Fully Open at 202°F. (94°C.)
Pressure Cap Required .. (w/o Cab Air Conditioner) 7 PSI (0.492 kg/cm²)
Pressure Cap Required .. (w/Cab Air Conditioner) 14 PSI (0.984 kg/cm²)

When using a proper operating 7 PSI (0.492 kg/cm²) radiator pressure cap, the engine temperature can safely rise to 230°F. (110°C.), with a 14 PSI (0.984 kg/cm²) pressure cap the engine temperature can safely rise to 250°F. (121°C.).

Electrical System

Type of System 12 Volt Negative Ground
Batteries (2) 12 Volt Batteries Connected
in parallel.

Group Size 30H, Rated at 1.255 to 1.265
Specific Gravity. Discharge Rate 300 Amps
at 0°F. Voltage Drops to 9.2 after 10
seconds. Voltage drops 1.0 Volt per cell
after 4 min.

Alternator 12 Volt 55 Amp Output
Voltage Regulator 12 Volt, Solid State,
Mounted on Alternator.

Starter Motor 12 Volt with Solenoid Switch
Head Lights (2) 12 Volt, 35 Watt, Sealed Beam
Flood Lights (2) 12 Volt, 35 Watt, Sealed Beam
Amber Warning Lights (2) 12 Volt, Double Face, Flasher Type
Rear Tail Light 12 Volt, 60 Watt Sealed Beam
Combination Tail and Flood Lamp.

Circuit Breaker System over Load check 12 Volt Twin 40 AMP
Breakers connected in parallel, 80 AMP rating.
60 Amp. Min. Continuous capacity.

Lights Circuit Breaker 30 Amp., Located on Light Switch
Parking Brake Warning Light 12 Volt, Red Flasher Type
Transmission Oil Filter Warning Light 12 Volt, Red Flasher Type

Parking Brake

Type Cable Actuated by Orscheln
Type Handle-Adjustable from
Operator's Seat, With Adjustable
and Replaceable Lining Pads.

Hydraulic Power Assist Brakes

Type Hydraulic, Power Assisted,
Self-Adjusting Caliper Disc Type
Differential Brakes, With Replaceable
Lining Pads.

Mechanical Transmission

Type 2 Speed Gear Range With
a 4 Speed Gear Section.

Gear Selection 8 Speeds Forward - 2 Speeds Reverse

Shifting Mechanical With Plunger Type
Locks and Tube Type Interlocks.

Rear Axle

Type Spiral Bevel With Planetary
Reduction in Hub.

Hydrostatic Power Steering

Pump Type Gear Type, Driven By The Engine.

Pump Capacity at 2000 Engine RPM 8 GPM (30.3 l/mn)

Hand Pump Type Gerotor Bi-Directional Driven
By the Steering Wheel.

Steering Cylinders Two Double Acting Cylinders

Buy Now



Our support email:

ebooklibonline@outlook.com