

900B Diesel Wheel Tractor Operators Manual

9-372

Reprinted





This symbol means ATTENTION! BECOME ALERT! YOUR SAFETY IS INVOLVED. The message that follows the symbol contains important information about your safety. Carefully read the message. Make sure you fully understand the causes of possible injury or death.

SB001

IF THIS MACHINE IS USED BY AN EMPLOYEE, IS LOANED, OR IS RENTED, MAKE SURE THAT THE OPERATOR UNDERSTANDS THE TWO INSTRUCTIONS BELOW.

BEFORE THE OPERATOR STARTS THE ENGINE:

1. GIVE INSTRUCTIONS TO THE OPERATOR ON SAFE AND CORRECT USE OF THE MACHINE.
2. MAKE SURE THE OPERATOR READS AND UNDERSTANDS THE OPERATOR'S MANUAL FOR THIS MACHINE.

WARNING

IMPROPER OPERATION OF THIS MACHINE CAN CAUSE INJURY OR DEATH.

BEFORE STARTING THE ENGINE, DO THE FOLLOWING:

1. READ THE OPERATOR'S MANUAL.
2. READ ALL SAFETY DECALS ON THE MACHINE.
3. CLEAR THE AREA OF OTHER PERSONS.

LEARN AND PRACTICE SAFE USE OF MACHINE CONTROLS IN A SAFE, CLEAR AREA BEFORE YOU OPERATE THIS MACHINE ON A JOB SITE.

It is your responsibility to observe pertinent laws and regulations and to follow manufacturer's instructions on machine operation and maintenance.

See your Authorized Case dealer for additional operator's manuals, parts catalogs, and service manuals.

NOTICE!

At the time your Case Dealer delivers your new tractor, he will acquaint you with its operation and maintenance as outlined in the "Dealer's Delivery Service Report". When your Dealer has completed these instructions, he will ask you to sign the report and will then hand you the yellow copy for your records.

NOTE: The "Dealer's Delivery Service Report" also contains a record of the Pre-Delivery Checkup which your Dealer made on your tractor.

AFTER DELIVERY CHECKUP

The Authorized Case Dealer from whom you purchased your new tractor will perform the "After Delivery Checkup" outlined on the following page, if you will arrange to bring your tractor to his Service Shop within - - -

60 days after date of delivery or 200 hours of operation (whichever occurs first)

NOTE: The only charge your dealer will make for this inspection will be for oil, filters or other accessories.

AFTER DELIVERY CHECKUP (Diesel)

(Owner's Name) _____	(Date Checkup Performed) _____
(Owner's Address) _____	
(Dealership) _____	(Town) _____
Tractor has been operated _____ hours _____	
(Tractor Model and Serial Number)	

- | | |
|---|--|
| <input type="checkbox"/> Check traction clutch.
<input type="checkbox"/> Check PTO clutch.
<input type="checkbox"/> Check brakes.
<input type="checkbox"/> Operate hydraulic system and check oil level in housing.
<input type="checkbox"/> Check tire pressure.
<input type="checkbox"/> Tighten cylinder heads and adjust tappets.
<input type="checkbox"/> Check fuel injection pump timing.
<input type="checkbox"/> Fuel filtering system.
<input type="checkbox"/> Check no load full governed engine speed.
<input type="checkbox"/> Tighten all bolts | <input type="checkbox"/> Cooling system.
<input type="checkbox"/> Crankcase oil (Change oil and filter if necessary).
<input type="checkbox"/> Oil Level in transmission, hydraulic system, and steering gear.
<input type="checkbox"/> Lubricate all pressure fittings and oil cups.
<input type="checkbox"/> Check air cleaner.
<input type="checkbox"/> Check steering, bearing adjustment and front wheel toe-in.
<input type="checkbox"/> Batteries, starter, generator and lights.
<input type="checkbox"/> Check operation of all instruments. |
|---|--|

DEALER: Question purchaser carefully concerning his experience with tractor and answer any questions concerning maintenance or operation that are not clear to him.

Checkup _____
Performed by

Signed _____
Dealer

Original—Dealer
Duplicates—Leave in Operators Manual
for Purchaser

Signed _____
Customer

AFTER DELIVERY CHECKUP (Diesel)

_____ <small>(Owner's Name)</small>	_____ <small>(Date Checkup Performed)</small>
_____ <small>(Owner's Address)</small>	
_____ <small>(Dealership)</small>	_____ <small>(Town)</small>
Tractor has been operated _____ hours _____ <div style="text-align: right;"><small>(Tractor Model and Serial Number)</small></div>	

- | | |
|---|--|
| <input type="checkbox"/> Check traction clutch.
<input type="checkbox"/> Check PTO clutch.
<input type="checkbox"/> Check brakes.
<input type="checkbox"/> Operate hydraulic system and check oil level in housing.
<input type="checkbox"/> Check tire pressure.
<input type="checkbox"/> Tighten cylinder heads and adjust tappets.
<input type="checkbox"/> Check fuel injection pump timing.
<input type="checkbox"/> Fuel filtering system.
<input type="checkbox"/> Check no load full governed engine speed.
<input type="checkbox"/> Tighten all bolts | <input type="checkbox"/> Cooling system.
<input type="checkbox"/> Crankcase oil (Change oil and filter if necessary).
<input type="checkbox"/> Oil Level in transmission, hydraulic system, and steering gear.
<input type="checkbox"/> Lubricate all pressure fittings and oil cups.
<input type="checkbox"/> Check air cleaner.
<input type="checkbox"/> Check steering, bearing adjustment and front wheel toe-in.
<input type="checkbox"/> Batteries, starter, generator and lights.
<input type="checkbox"/> Check operation of all instruments. |
|---|--|

DEALER: Question purchaser carefully concerning his experience with tractor and answer any questions concerning maintenance or operation that are not clear to him.

Checkup _____
Performed by

Signed _____
Dealer

Original—Dealer
Duplicate—Leave in Operators Manual
 for Purchaser

Signed _____
Customer

To the Purchaser of a Case Tractor,

The care you give your new Case tractor will greatly determine the satisfaction and service life you will obtain from it. Use this manual as your guide. By observing the instructions and suggestions in this manual, your Case tractor will serve you well for many years.

As an Authorized Case Dealer, we stock Genuine Case Parts, which are manufactured with the same precision and skill as the original equipment. Our factory trained staff is kept well informed on the best methods of servicing Case equipment and is ready and able to help you.

Should you require additional aid or information, contact us.

Your Authorized Case Dealer

To insure efficient and prompt service, please furnish us with the Model and Serial Number of your tractor in all correspondence or contacts.

TABLE OF CONTENTS

	Page
Serial Number	6
General Specifications	7
Diesel Engine Fuel	17
Fuel Specifications for a Suitable Number 2 Diesel Fuel.....	19
Fuel Recommendations for Cold Weather Operation.....	22
Fuel Handling and Storage.....	23
Lubrication	29
Recommended Lubricants and Approximate Capacities.....	31
Lubricating Point Locations.....	32
Engine Lubrication.....	34
Transmission Lubrication.....	40
Hydraulic Control System.....	42
Independent Power Take-Off.....	44
Hydraulic Power Steering.....	45
Operating Instructions	47
Run-In Procedure.....	48
Operating Controls and Instrument Guide.....	50
Diesel Engine Starting Procedure.....	59
Stopping Engine.....	60
Cold Weather Operation.....	61
Ether Starting Aid.....	63
Gear Selection.....	66
Differential Brakes.....	67
Tire Sizes, Pressures, Rear Wheel Weights.....	68 and 69
Drawbar.....	70
Belt Pulley.....	72
Independent Power Take-off.....	74
Hydraulic Control Operation.....	78
Implement Warning Lamp.....	83

TABLE OF CONTENTS Continued

	Page
Important Checks During Operation	85
Service Suggestions	89
Preventive Maintenance	99
Fuel System.....	101
Bleeding Fuel System.....	104 and 105
Checking Condition of Fuel Filters.....	106
Servicing Fuel Filters.....	110
Air Cleaner.....	114
Crankcase Breathers.....	118
Cooling System.....	119
Power Steering Drive Belt.....	127
Starting and Lighting Equipment.....	128
Traction Clutch Adjustment.....	135
Adjusting Transmission Brake	136
Valve Tappet Clearance.....	137
Power Take-off Clutch Adjustment.....	139
Adjusting Differential Brakes.....	140
Repacking and Adjusting Front Wheel, Bearings.....	141
Adjusting Steering Mechanism.....	142
Storing the Tractor.....	144
Index	146
Warranty	148

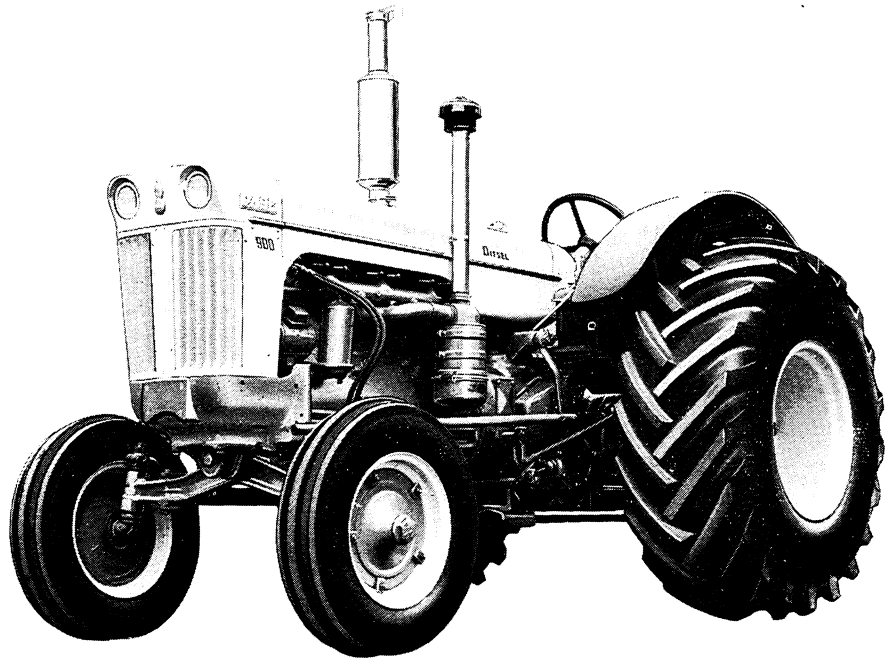


Figure 1. Illustrates Hydraulic Power Steering on Case 900 Diesel Tractor

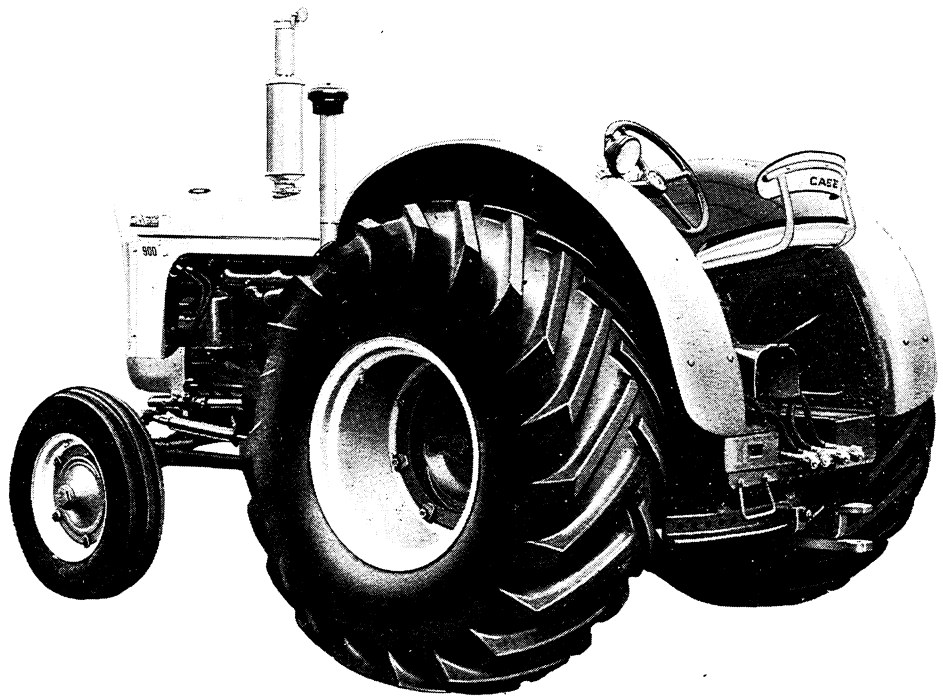


Figure 2. Illustrates Full Fenders, Wide Swinging Drawbar and Hydraulics

INTRODUCTION

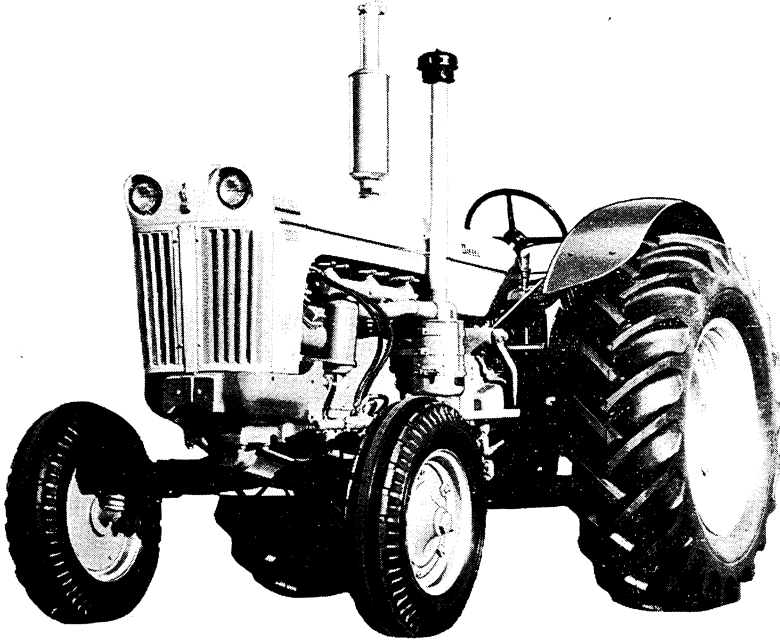


Figure 3.

The Case Model 900 Diesel Tractor is powered by a rugged six cylinder full diesel engine that is noted for its quiet operating characteristics and economy of operation.

The transmission, 6 Speeds forward and 1 reverse, provides a full range of working speeds to handle all implements and tools in any type or condition of soil. The high speed (6th) road gear brings your fields closer to the farm yard in terms of non productive time spent on the road.

Advanced engineering includes the CASE POWRCEL combustion system which produces all of the available power out of each charge of injected fuel. To protect the closely fitted precision parts, the finest filters available have been provided to clean the fuel, the intake air and the crankcase oil.

The four basic rules of Diesel Engine operation, which are the deciding factors in determining the service life and economy of operation that you will receive from your tractor, are as follows:

1. CLEAN FUEL

- (a) Use only Number 2 Diesel Fuel that meets the specifications listed in this manual.
- (b) Follow the instructions regarding the recommended precautions when handling and storing fuel.

2. AIR CLEANER

Service the air cleaner regularly.

3. CRANKCASE OIL

Diesel Engines require the use of a heavy duty engine oil. Select oil that meets the proper service designations recommended in the lubrication section of this manual.

4. PERIODIC CHECKUPS

Your authorized Case Dealer has the service knowledge necessary to keep your tractor in top running condition.

Arrange to have him check your tractor at regular intervals.

NOTE: The terms "Right Hand" and "Left Hand" whenever used in this manual apply to the tractor when facing in the direction the tractor will move in forward operation.

SERIAL NUMBER

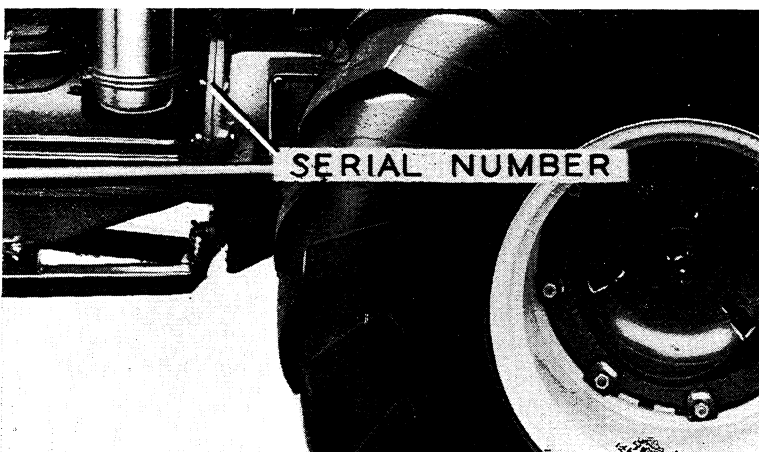


Figure 4.

When ordering parts from your Authorized Case Dealer and in all contacts or correspondence with your dealer relative to the tractor, always specify the Serial Number and Model of your tractor.

The model and serial numbers are stamped on the number plate located on the right hand side of the instrument panel. See Figure 5. The serial number is also stamped on the left rear side of the engine block near the air cleaner, Figure 4.

For reference, fill in the Serial number of your 900 Series Diesel Tractor in the space provided below.

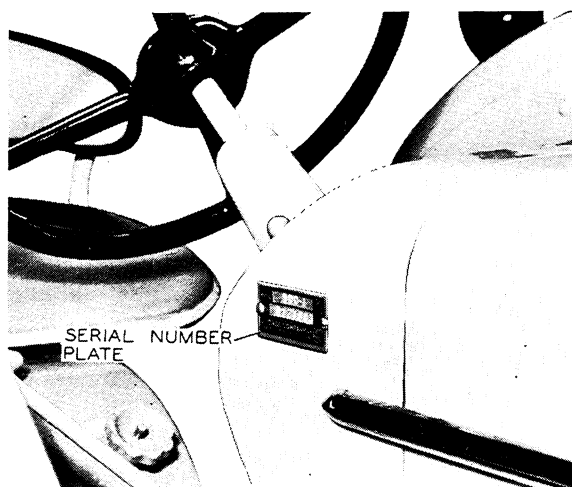


Figure 5

Model.....*Serial No.*.....

GENERAL SPECIFICATIONS FOR CASE 900 SERIES DIESEL TRACTORS

General

Type.....	6 cylinder, 4 Stroke Cycle, Valve-in Head, Diesel Engine
Firing Order.....	1-5-3-6-2-4
Bore.....	4 Inches
Stroke.....	5 Inches
Piston Displacement.....	377 Cubic Inches
Cylinder Sleeves.....	Removable, Wet Type
Full Governed Engine Speed at no load.....	1635 RPM
Full Governed Engine Speed at full load.....	1500 RPM
Engine Idling Speed.....	600 RPM
Valve Tappet Clearance (Both Intake and Exhaust).....	.012 Inch (cold)
Engine Hour Meter.....	Standard Equipment
Cold Weather Starting Aid.....	Ether Capsule Type Starting Aid Standard Equipment (Use only 7 CC Capsules)
Diesel Fuel.....	Number 2 Diesel Fuel (Refer to Fuel Specification Section)

Piston Rings

Rings per piston.....	4
Number of Compression Rings.....	3
Number Oil Rings.....	1

Piston Pins

Type Pins.....	Full Floating Type
----------------	--------------------

Connecting Rods

Type Bearings.....	Replaceable Precision, Steel Back, Copper-Lead Alloy Inserts
--------------------	---

Main Bearings

Number of Bearings.....	7
Type Bearings.....	Replaceable Precision, Steel Back, Copper-Lead Alloy Inserts



Our support email:

ebooklibonline@outlook.com