

**910B  
LP Gas**

**Operators Manual**

9-383

Reprinted








*THIS SAFETY ALERT SYMBOL INDICATES IMPORTANT SAFETY MESSAGES IN THIS MANUAL. WHEN YOU SEE THIS SYMBOL, CAREFULLY READ THE MESSAGE THAT FOLLOWS AND BE ALERT TO THE POSSIBILITY OF PERSONAL INJURY OR DEATH.*

M171B

If Safety Decals on this machine use the words **Danger, Warning or Caution**, which are defined as follows:

- **DANGER:** Indicates an immediate hazardous situation which if not avoided, will result in death or serious injury. The color associated with Danger is RED.
- **WARNING:** Indicates an potentially hazardous situation which if not avoided, will result in serious injury. The color associated with Warning is ORANGE.
- **CAUTION:** Indicates an potentially hazardous situation which if not avoided, may result in minor or moderate injury. It may also be used to alert against unsafe practices. The color associated with Caution is YELLOW.

If Safety Decals on this machine are ISO two panel Pictorial, decals are defined as follows:

- The first panel indicates the nature of the hazard.
- The second panel indicates the appropriate avoidance of the hazard.
- Background color is YELLOW.
- Prohibition symbols such as   and  if used, are RED.



# WARNING

IMPROPER OPERATION OF THIS MACHINE CAN CAUSE INJURY OR DEATH. BEFORE USING THIS MACHINE, MAKE CERTAIN THAT EVERY OPERATOR:

- Is instructed in safe and proper use of the machine.
- Reads and understands the Manual(s) pertaining to the machine.
- Reads and understands ALL Safety Decals on the machine.
- Clears the area of other persons.
- Learns and practices safe use of machine controls in a safe, clear area before operating this machine on a job site.

It is your responsibility to observe pertinent laws and regulations and follow Case Corporation instructions on machine operation and maintenance.

## **NOTICE!**

At the time your Case Dealer delivers your new tractor, he will acquaint you with its operation and maintenance as outlined in the "Dealer's Delivery Service Report". When your Dealer has completed these instructions, he will ask you to sign the report and will then hand you the yellow copy for your records.

**NOTE:** The "Dealer's Delivery Service Report" also contains a record of the Pre-Delivery Checkup which your Dealer made on your tractor.

### **AFTER DELIVERY CHECKUP**

The Authorized Case Dealer from whom you purchased your new tractor will perform the "After Delivery Checkup" outlined on the following page, if you will arrange to bring your tractor to his Service Shop within - - -

60 days after date of delivery or 200 hours of operation (whichever occurs first).

**NOTE:** The only charge your dealer will make for this inspection will be for oil, filters or other accessories.

## AFTER DELIVERY CHECKUP (Spark Ignition Tractors)

(Owner's Name)	(Date Checkup Performed)
(Owner's Address)	
(Dealership)	(Town)
Tractor has been operated _____ hours	
(Tractor Model and Serial Number)	

Dealer's Copy—Tear Here

- |   |   |
|---|---|
| <input type="checkbox"/> Check traction clutch.<br><input type="checkbox"/> Check PTO clutch.<br><input type="checkbox"/> Check brakes.<br><input type="checkbox"/> Operate hydraulic system.<br><input type="checkbox"/> Check tire pressure.<br><input type="checkbox"/> Tighten cylinder heads and adjust tappets.<br><input type="checkbox"/> Check distributor timing (magneto - if so equipped).<br><input type="checkbox"/> Check spark plugs and distributor point gap.<br><input type="checkbox"/> Check full governed no load engine speed. | <input type="checkbox"/> Tighten all bolts (including rims).<br><input type="checkbox"/> Cooling system.<br><input type="checkbox"/> Crankcase oil (Change oil and filter if necessary).<br><input type="checkbox"/> Oil level in transmission, hydraulic system and steering gear.<br><input type="checkbox"/> Lubricate all pressure fittings and oil cups.<br><input type="checkbox"/> Check air cleaner.<br><input type="checkbox"/> Check steering, bearing adjustment and front wheel toe-in.<br><input type="checkbox"/> Battery, starter, generator and lights.<br><input type="checkbox"/> Check operation of all instruments. |
|---|---|

**DEALER:** Question purchaser carefully concerning his experience with tractor and answer any questions concerning maintenance or operation that are not clear to him.

Checkup \_\_\_\_\_  
Performed by

Signed \_\_\_\_\_  
Dealer

**Original—Dealer**  
**Duplicate—Leave in Operators Manual**  
**for Purchaser**

Signed \_\_\_\_\_  
Customer

## AFTER DELIVERY CHECKUP (Spark Ignition Tractors)

(Owner's Name)	(Date Checkup Performed)
(Owner's Address)	
(Dealership)	(Town)
Tractor has been operated.....hours	
(Tractor Model and Serial Number)	

Dealer's Copy—Tear Here

- |   |   |
|---|---|
| <input type="checkbox"/> Check traction clutch.<br><input type="checkbox"/> Check PTO clutch.<br><input type="checkbox"/> Check brakes.<br><input type="checkbox"/> Operate hydraulic system.<br><input type="checkbox"/> Check tire pressure.<br><input type="checkbox"/> Tighten cylinder heads and adjust tappets.<br><input type="checkbox"/> Check distributor timing (magneto - if so equipped).<br><input type="checkbox"/> Check spark plugs and distributor point gap.<br><input type="checkbox"/> Check full governed no load engine speed. | <input type="checkbox"/> Tighten all bolts (including rims).<br><input type="checkbox"/> Cooling system.<br><input type="checkbox"/> Crankcase oil (Change oil and filter if necessary).<br><input type="checkbox"/> Oil level in transmission, hydraulic system and steering gear.<br><input type="checkbox"/> Lubricate all pressure fittings and oil cups.<br><input type="checkbox"/> Check air cleaner.<br><input type="checkbox"/> Check steering, bearing adjustment and front wheel toe-in.<br><input type="checkbox"/> Battery, starter, generator and lights.<br><input type="checkbox"/> Check operation of all instruments. |
|---|---|

**DEALER:** Question purchaser carefully concerning his experience with tractor and answer any questions concerning maintenance or operation that are not clear to him.

Checkup.....  
Performed by

Signed.....  
Dealer

**Original—Dealer**  
**Duplicate—Leave in Operators Manual**  
**for Purchaser**

Signed.....  
Customer

## **To the Purchaser of a Case Tractor,**

The care you give your new Case tractor will greatly determine the satisfaction and service life you will obtain from it. Use this manual as your guide. By observing the instructions and suggestions in this manual, your Case tractor will serve you well for many years.

As an Authorized Case Dealer, we stock Genuine Case Parts, which are manufactured with the same precision and skill as the original equipment. Our factory trained staff is kept well informed on the best methods of servicing Case equipment and is ready and able to help you.

Should you require additional aid or information, contact us.

*Your Authorized Case Dealer*

*To insure efficient and prompt service, please furnish us with the Model and Serial Number of your tractor in all correspondence or contacts.*

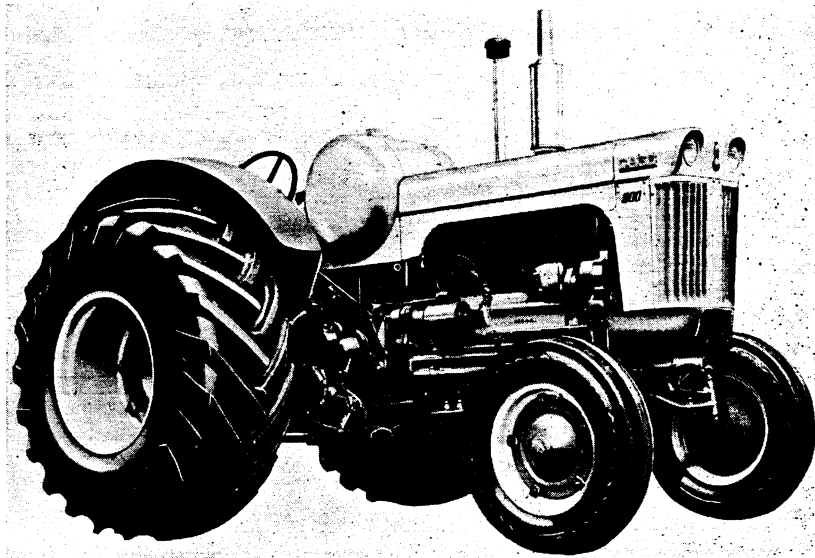
# TABLE OF CONTENTS

	Page
<b>Serial Number</b> .....	6
<b>General Specifications</b> .....	7
<b>Lubrication</b> .....	17
Pressure Fittings.....	19
Engine Lubrication.....	22
Transmission Lubrication.....	27
Hydraulic Control System.....	29
Independent Power Take-off.....	31
Hydraulic Power Steering Attachment.....	32
<b>Operating Instructions</b> .....	35
The Application of LP Gas as a Fuel for Engine Use.....	36
Run-in Procedure.....	38
Pre-Starting Check List.....	39
Operating Controls and Instrument Guide.....	40
Hour Meter.....	41
Deluxe Seat.....	44
Power Steering.....	45
Starting and Operating Tractor the First Time.....	47
Setting Carburetion Adjustments.....	53
Normal Starting Procedure.....	55
Cold Weather Starting.....	55
Stopping the Engine.....	55
Recommended Method for Emptying LPG Tank.....	56
Cold Weather Operation.....	57
Gear Selection.....	60
Independent Differential Brakes.....	61
Rear Tire Sizes.....	62
Rear Wheel Weights.....	63
Drawbar.....	64
Belt Pulley.....	66

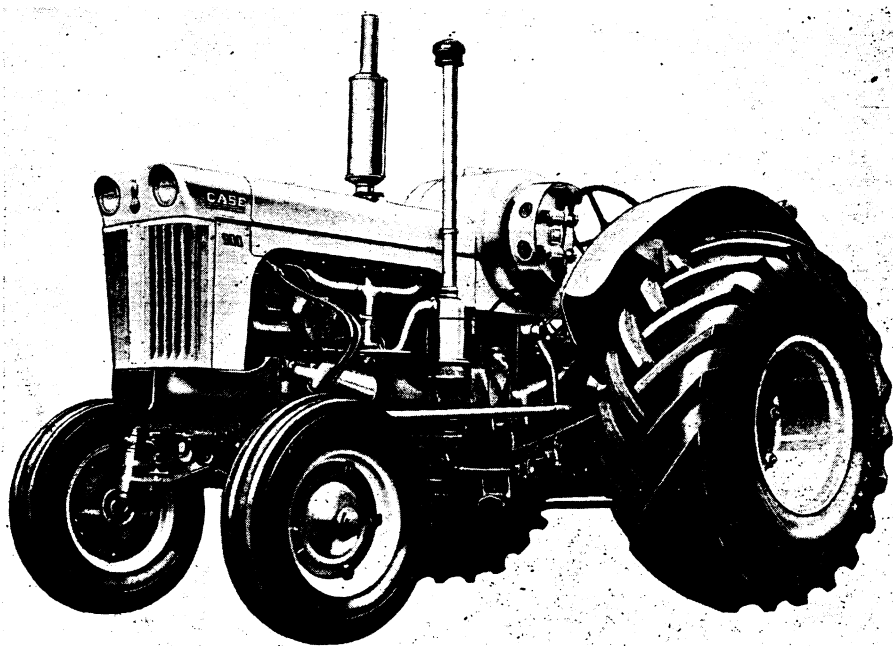
## TABLE OF CONTENTS (Continued)

Independent Power Take-Off.....	68
Constant Hydraulic Control Operation.....	72
Tool Box.....	76
Implement Warning Lamp.....	77
Important Checks During Operation.....	79
<b>Service Suggestions.....</b>	<b>81</b>
<b>Preventive Maintenance.....</b>	<b>91</b>
Cooling System.....	93
Facts to Remember About Pressurized Cooling Systems.....	94
Anti-Freeze Solutions.....	95
Thermostat.....	96
Power Steering Drive Belt.....	100
Air Cleaner.....	101
Crankcase Breathers.....	105
Transmission Breather.....	105
Liquid Fuel Filter.....	106
LPG Regulator Coolant Drain Plug.....	107
LPG Regulator Drain Valve.....	107
Starting, Lighting and Ignition Equipment.....	108
Governor and Engine Speed.....	125
Transmission.....	125
Valve Tappet Clearance.....	126
Traction Clutch Adjustment.....	128
Adjusting Transmission Brake.....	129
Adjusting Power Take-off Clutch.....	130
Differential Brakes.....	131
Adjusting Steering Gear.....	132
Repacking and Adjusting Front Wheel Bearing.....	133
Tractor Storage.....	134



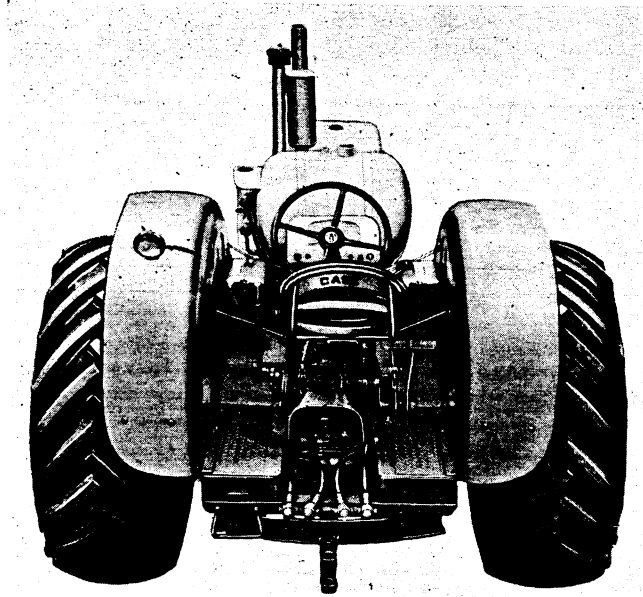


**Figure 1. Right Hand Side of Case 900 LP Gas Tractor**



**Figure 2. Left Hand Side of Case 900 LP Gas Tractor**

## INTRODUCTION



**Figure 3. Rear of Tractor Showing Wide Swinging Drawbar and Operator's Platform**

The Case 900 Series Tractor is powered by a rugged six cylinder spark ignition engine which features heavy duty precision type construction usually found only in diesel engines. This engine is noted for its quiet operating characteristics and economy of operation.

Advanced engineering also includes the following outstanding features on the 900 Series Tractors:

### **Transmission**

The Case transmission, 6 speeds forward and 1 reverse, provides a working speed for every job on the farm in any type or condition of soil. The high speed (6th) road gear brings your fields closer to the farm yard and eliminates much non-productive time spent on the road.

### **"Comforized" Platform**

The easily accessible operating controls, well lighted "Tell-Easy" instrument panel; all features designed with the operator's comfort in mind, are standard equipment on Case 900 Series Tractors.

## SERIAL NUMBER

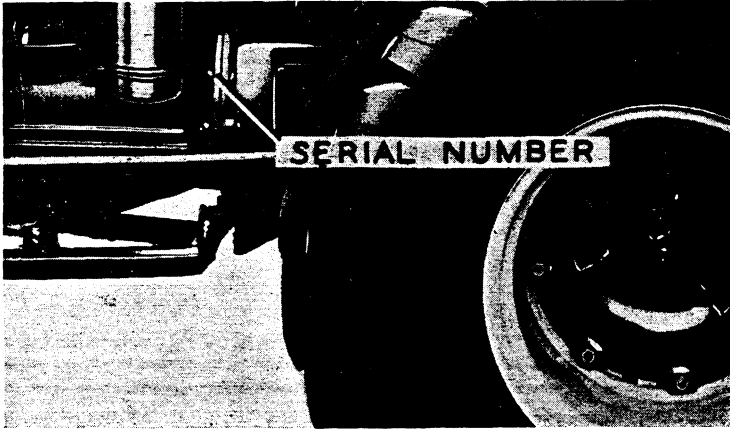


Figure 4

When ordering parts from your Authorized Case Dealer and in all contacts or correspondence with your dealer relative to the tractor, always specify the Serial Number and Model of your tractor.

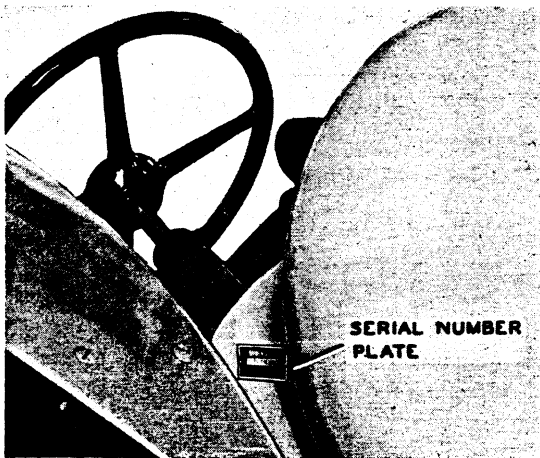


Figure 5

The model and serial number are stamped on the number plate located on the right hand side of the instrument panel. Figure 5. The serial number is also stamped on the left rear side of the engine block near the air cleaner, Figure 4.

For reference, fill in the Serial number and Model of your 900 Series Tractor in the space provided below.

Model..... Serial No.....

Thank you so much for reading.  
Please click the “Buy Now!”  
button below to download the  
complete manual.



After you pay.

You can download the most  
perfect and complete manual in  
the world immediately.

Our support email:

[ebooklibonline@outlook.com](mailto:ebooklibonline@outlook.com)