

# **2670 Tractor**

## **Operators Manual**

**9-3881**





***This symbol means ATTENTION! BECOME ALERT! YOUR SAFETY IS INVOLVED. The message that follows the symbol contains important information about your safety. Carefully read the message. Make sure you fully understand the causes of possible injury or death.***

SB001

IF THIS MACHINE IS USED BY AN EMPLOYEE, IS LOANED, OR IS RENTED, MAKE SURE THAT THE OPERATOR UNDERSTANDS THE TWO INSTRUCTIONS BELOW.

BEFORE THE OPERATOR STARTS THE ENGINE:

1. GIVE INSTRUCTIONS TO THE OPERATOR ON SAFE AND CORRECT USE OF THE MACHINE.
2. MAKE SURE THE OPERATOR READS AND UNDERSTANDS THE OPERATOR'S MANUAL FOR THIS MACHINE.



**IMPROPER OPERATION OF THIS MACHINE CAN CAUSE INJURY OR DEATH.**

BEFORE STARTING THE ENGINE, DO THE FOLLOWING:

1. READ THE OPERATOR'S MANUAL.
2. READ ALL SAFETY DECALS ON THE MACHINE.
3. CLEAR THE AREA OF OTHER PERSONS.

LEARN AND PRACTICE SAFE USE OF MACHINE CONTROLS IN A SAFE, CLEAR AREA BEFORE YOU OPERATE THIS MACHINE ON A JOB SITE.

It is your responsibility to observe pertinent laws and regulations and to follow manufacturer's instructions on machine operation and maintenance.

See your Authorized Case dealer for additional operator's manuals, parts catalogs, and service manuals.

# TABLE OF CONTENTS

TO THE PURCHASER .....	III	LUBRICATION	
SAFETY .....	IV-XVI	Trans. Fluid Change .....	25
Safety Rules .....	IV	Hydraulic Oil Filters .....	25,26
Pre-Starting .....	IV, V	Planetary Oil Change .....	27
Operation .....	VI-XIII	Differential Oil Change .....	27
Service .....	XIV-XVI	Disc Brakes .....	28
		Alternator Charging Systems .....	29
SERIAL NUMBERS .....	1	OPERATING INSTRUCTIONS .....	30-94
DIESEL ENGINE		Run-In-Procedure .....	30
SPECIFICATIONS .....	2,3	Pre-Starting Check List .....	31
		Towing .....	31
GENERAL SPECIFICATIONS .....	4-7	Operating Instruments .....	32-37
Air Intake System .....	4	Operating Controls .....	38-65
Cooling System .....	4	Starting Procedure .....	66,67
Electrical System .....	4	Cold Weather Operation .....	68
Hydraulic Brakes .....	4	Tractor Warm-Up Procedure .....	69
Parking Brake .....	5	Cold Weather Starting .....	70,71
Power Shift Transmission .....	5	Ether Quick Starting Aid .....	70
Hydraulic Pump .....	5	Operation of Quick Start Aid .....	70
Hydrostatic Front Power Steering .....	5	Cold Weather Starting Fluid .....	71
Rear Power Steering .....	6	Coolant Heater .....	71
Axle Differential and Planetaries .....	6	Power Shift Transmission .....	72,73
3 Point Hitch System .....	6	Power Take-Off .....	74
L.H. Dual Remote Hydraulic System .....	6	Operating Power Take-Off .....	74
R.H. Dual Remote Hydraulic System .....	7	Power Take-Off Guards .....	75
Power Take-Off .....	7	PTO Operating Precautions .....	76
Drawbar .....	7	Three Point Hitch System .....	77-80
APPROXIMATE TRAVEL SPEEDS .....	8	Quick Hitch Coupler .....	81
OVER MEASUREMENTS .....	9	Anti-Sway Chain .....	81
APPROXIMATE SHIPPING WEIGHT ...	9	Drawbar .....	82
TIRE AND WHEEL EQUIPMENT .....	10	Remote Hydraulic Control .....	83,84
WHEEL TREAD SPACING .....	11-15	Hydraulic Hose Coupling .....	85,86
DUAL WHEEL TIRE PRESSURES .....	15	Remote Cylinder .....	87
DUAL WHEELS .....	16	Hydraulic Cylinder Jack Pads .....	88
FUEL SPECIFICATIONS .....	17,18	Wheel Rim Adjust and Mount .....	89
Fuel Conditioner .....	18	Wheel Spacing and Clamp Adjust .....	90
LUBRICATION .....	19-29	Dual Wheel Mounting .....	91
Engine Hourmeter .....	19	Tire Mounting .....	92
Lube Recommendations and		Tire Liquid Weight .....	92
Capacities .....	20	Wheel Weights .....	93
Lubrication Chart .....	20,21	Front End Weights .....	94
Diesel Engine .....	22	PREVENTIVE MAINTENANCE ...	95-138
Engine Crankcase Oil Change .....	23	Cooling System .....	96-99
Engine Oil Filters .....	24	Facts About Pressurized	
		Cooling System .....	96
		Anti-Freeze Solutions .....	97
		Engine Cooling System Treatment .....	97
		Cleaning the Cooling System .....	98,99
		Checking the Thermostat .....	99
		Thermostat Replacement .....	99
		Fan Belt Adjustments .....	100
		Replacing Fan Belts .....	100

# TABLE OF CONTENTS

## PREVENTIVE MAINTENANCE

Diesel Fuel System .....	101-105
General Description .....	101,102
Servicing Fuel Filters .....	103,104
Bleeding Fuel System .....	105
Air Induction System .....	106-111
Final Air Filter Service Interval ...	107
Servicing the Final Air Filter .....	107-109
Servicing Air Induction System .....	110,111
Start Switch Adjustments .....	112
Parking Brake Adjustment .....	113
Three Point Hitch Adjustments .....	114-116
Electrical System .....	117-123
Headlights .....	117
Comb. Rear Tail and Flood Light ...	117
Flashing Amber Warning Lights ...	118
Instrument Panel Gauge Lights ....	118
Flood Lights .....	119
Directional Turn Signal Panel Lights .....	119
Front Headlight Adjustment .....	120
Storage Battery .....	121-123

## PREVENTIVE MAINTENANCE

Rollover Protective Structure (ROPS) .....	124-126
Operator's Cab .....	127-138
Preventive Maintenance .....	127
Air Filter Removal .....	128
Air Filter Service .....	129,130
Seat Belt Inspection and Care .....	130
Operator's Seat and Trim .....	131,132
Dome Light .....	133
Fuse Panel .....	133
Console Light .....	134
Checking Refrigerant Level ...	135,136
Compressor Belt Replacement .....	137
Compressor Belt Adjustment .....	138

CASE TECHNICAL MANUALS .....	139
------------------------------	-----

# TO THE PURCHASER OF A CASE TRACTOR

The care you give your Case Tractor will greatly determine the satisfaction and service you will obtain from it. Use this manual as your guide. By observing the instructions and suggestions in this manual, your Case Tractor will serve you well for many years.

As an Authorized Case Dealer, we stock Genuine Case Parts, which are manufactured with the same precision and skill as the original equipment. Our factory trained staff is kept well informed on the best methods of servicing Case equipment and is ready and able to help you.

**Your Authorized Case Dealer**



**Figure 1**

**TO INSURE EFFICIENT AND PROMPT SERVICE, PLEASE FURNISH US WITH THE MODEL, TRACTOR, ENGINE, TRANSMISSION, CAB AND AXLE SERIAL NUMBERS OF YOUR TRACTOR IN ALL CORRESPONDENCE OR CONTACTS.**

**NOTE:** The terms "Right Hand" and "Left Hand" whenever used in this manual, apply to the tractor when facing in the direction the tractor will move in forward operation.

# SAFETY

## Safety Rules

Your safety and the safety of those around you is highly dependent upon the care and good judgement you exercise in the use of this equipment. Know the positions and functions of all controls before attempting to operate. **BE SURE TO CHECK ALL CONTROLS IN A SAFE OPEN AREA BEFORE STARTING YOUR WORK.**

**READ THIS MANUAL THOROUGHLY** and make sure you understand its contents. All equipment has limitations. Be sure you understand, for example, the speed, braking, steering, stability and load characteristics of this machine before starting to operate.

The safety information presented in this manual is not intended to replace safety codes, insurance requirements, federal, state and local laws, rules and regulations. Know the regulations and laws that apply to your area and be sure that your machine is properly equipped to meet such laws and regulations.

We at Case are continuing to contribute to your safety in two ways: by building tractors with an extra measure of protection and comfort. . . . and by passing on these suggestions for safer operation.

**IMPORTANT:** *Always install new decals whenever the old decals are destroyed, lost, painted over or illegible. When individual parts are replaced that have decals attached, be sure to install a new decal with the new part.*

## Pre-Starting



**CAUTION** *It is good practice to carry a fire extinguisher on the tractor. Be sure that the extinguisher is properly maintained and be familiar with its proper use.*



**CAUTION** *Provide a first aid kit for use in case of accident.*

**WARNING** Before starting engine study Operator's Manual safety messages.

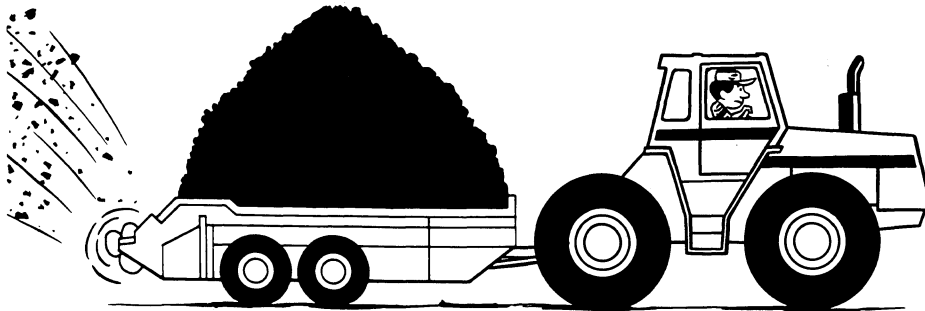
Read all safety signs on machine.

Clear the area of other persons.

Learn and practice safe use of controls before operating.

It is your responsibility to understand and follow manufacturer's instructions on machine operation, service, and to observe pertinent laws and regulations.

Operator and Service Manuals may be obtained from your equipment dealer.



**WARNING** Before starting engine be sure all operating controls are in neutral.

Operate controls only when seated in Operator's seat.

On roads, use flasher/lights according to local laws. Keep SMV emblem visible.

Shields help protect from injury, keep in place.

Stop engine before working on PTO driven machine or PTO shaft, or performing any maintenance.

Before leaving tractor unattended, lower hydraulically lifted equipment to ground.



**WARNING** Before starting the engine, be sure all operating controls are in neutral. This will ease starting loads on the starter and batteries and will eliminate the accidental start up of PTO driven equipment.



## Operation



**CAUTION** Before leaving the tractor, stop the engine, place all controls in neutral and set the parking brake.



**WARNING** Operate controls only when seated in the Operator's seat.



**WARNING** On roads, use flasher/lights according to local laws. Keep SMV emblem visible.

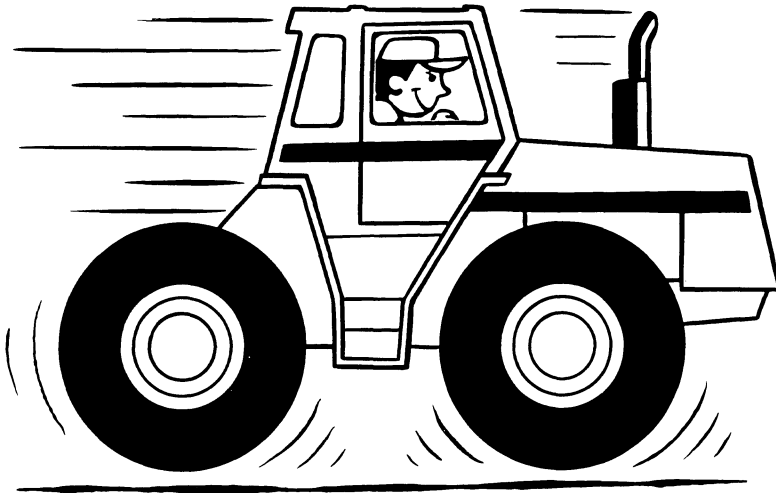


**WARNING** Tractor travel speed should be such that complete control and tractor stability is maintained at all times. Where possible, avoid operating the tractor near ditches, embankments and holes. Reduce speed when turning, crossing slopes, and on rough, slick, or muddy surfaces.

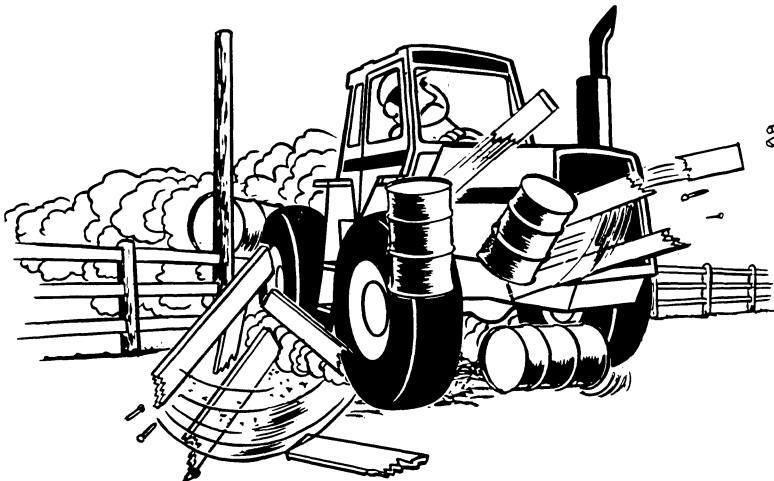




**DANGER** *Excess tractor speed is the big killer. Only experienced drivers should be permitted on highways.*



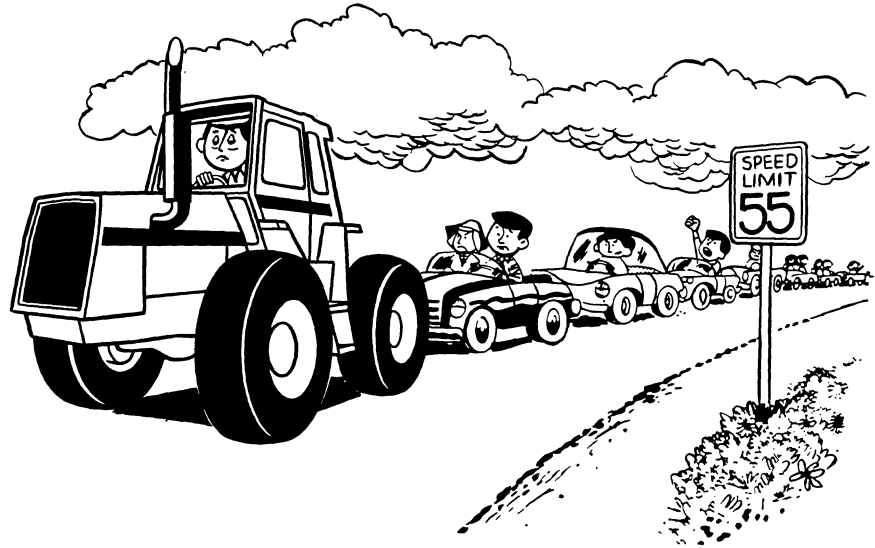
**WARNING** *Extra weight increases your braking distance. Remember that liquid in the tires, weights on the tractor or wheels, tanks filled with fertilizer, herbicides or insecticides - all these add weight and increase the distance you need in which to stop.*



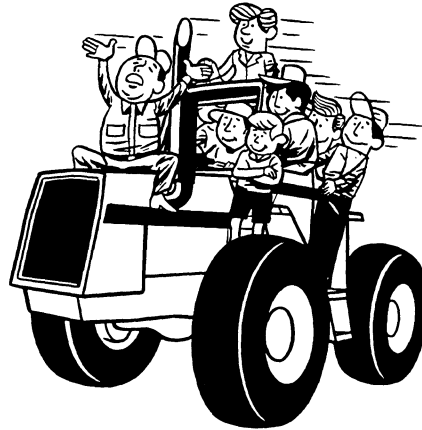
**WARNING** *The braking distance will increase in conditions of mud, ice or whenever the traction at one wheel is less than the traction at the opposite wheel. The operator must allow adequate distance to stop in these conditions.*



**CAUTION** *Stop, look and listen before entering a highway, stay on your side of the road and pull over to let faster traffic pass. Slow down and signal as you turn off.*



**WARNING** *Do not permit others to ride. Only one person - the operator - should be on a tractor when it is in operation.*



**CAUTION** *Do not use rear steering during road transport.*



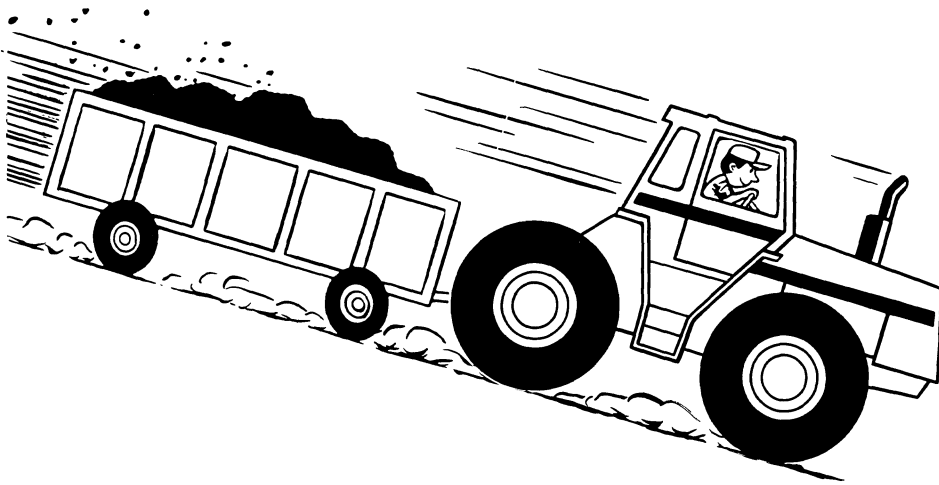
**WARNING** *Be certain both latches are fully engaged across the implement lift pins before transporting or pulling the implement.*



**CAUTION** *The implement should be lowered to the ground before uncoupling of the remote hydraulic hoses.*



**WARNING** *Stay off slopes too steep for safe operation. Shift down before you start up or down a hill with a heavy load. Avoid "free wheeling".*





**WARNING** *Rotating machine parts, stay clear, keep shields installed to help protect from clothing entanglement and injury. Wear close-fitted clothing.*



**WARNING** *Stop engine before working on PTO driven machine or PTO shaft, or performing any maintenance.*



**WARNING** *Whenever a PTO driven machine is in operation, the safety guard must always be in place to prevent injury to the operator. The safety guard must never be removed at any time, except for replacement. When the PTO is not in use, the tubular guard must be installed over the end of the PTO shaft.*



**WARNING** *When doing stationary PTO work and dismounting from the tractor with the PTO running, keep clear of all moving parts as they are a potential safety hazard.*



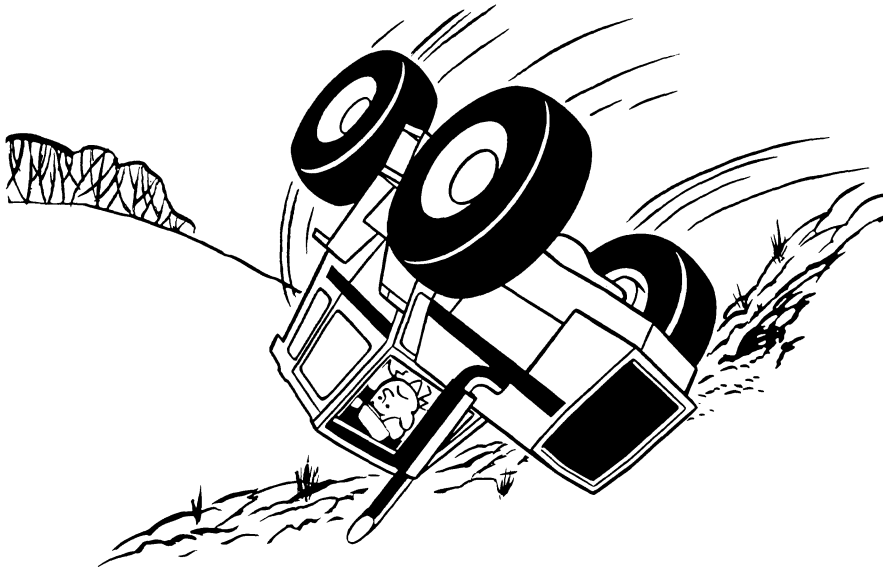
**WARNING** *On a mobile power take-off application, always disengage the PTO before dismounting from the tractor.*



**WARNING** *This tractor is equipped with a 1000 RPM PTO - be sure implements are matched for this drive speed. Center and lock drawbar when using PTO.*



**WARNING:** *Securely fasten your seat belt as this tractor is equipped with a ROPS cab. The seat belts can help insure your safety if they are used and maintained.*



**CAUTION** *Never wear a seat belt loosely or with slack in the belt system. Never wear the belt in a twisted condition or pinched between the seat structural members.*



**WARNING** *Rotating fan and belts. Contact can injure. Keep clear.*

**Buy Now**



Our support email:

[ebooklibonline@outlook.com](mailto:ebooklibonline@outlook.com)