

Operator's Instruction Manual

CASE INDUSTRIAL

920B DIESEL

WHEEL TRACTOR



J. I. CASE® CO.

RACINE, WISCONSIN U.S.A.

To the Purchaser of a Case Tractor,

The care you give your new Case tractor will greatly determine the satisfaction and service life you will obtain from it. Use this manual as your guide. By observing the instructions and suggestions in this manual, your Case tractor will serve you well for many years.

As an Authorized Case Dealer, we stock Genuine Case Parts, which are manufactured with the same precision and skill as the original equipment. Our factory trained staff is kept well informed on the best methods of servicing Case equipment and is ready and able to help you.

Should you require additional aid or information, contact us.

Your Authorized Case Dealer

To insure efficient and prompt service, please furnish us with the Model and Serial Number of your tractor in all correspondence or contacts.

TABLE OF CONTENTS

	Page
Serial Number	6
General Specifications	7
Diesel Engine Fuel	17
Fuel Specifications for a Suitable Number 2 Diesel Fuel.....	19
Fuel Recommendations for Cold Weather Operation.....	22
Fuel Handling and Storage.....	23
Lubrication	29
Recommended Lubricants and Approximate Capacities.....	31
Lubricating Point Locations.....	32
Engine Lubrication.....	34
Transmission Lubrication.....	40
Hydraulic Control System.....	42
Independent Power Take-Off.....	44
Hydraulic Power Steering.....	45
Operating Instructions	47
Run-In Procedure.....	48
Operating Controls and Instrument Guide.....	50
Diesel Engine Starting Procedure.....	59
Stopping Engine.....	60
Cold Weather Operation.....	61
Ether Starting Aid.....	63
Gear Selection.....	66
Differential Brakes.....	67
Tire Sizes, Pressures, Rear Wheel Weights.....	68 and 69
Drawbar.....	70
Belt Pulley.....	72
Independent Power Take-off.....	74
Hydraulic Control Operation.....	78
Implement Warning Lamp.....	83

TABLE OF CONTENTS Continued

	Page
Important Checks During Operation.....	85
Service Suggestions.....	89
Preventive Maintenance.....	99
Fuel System.....	101
Bleeding Fuel System.....	104 and 105
Checking Condition of Fuel Filters.....	106
Servicing Fuel Filters.....	110
Air Cleaner.....	114
Crankcase Breathers.....	118
Cooling System.....	119
Power Steering Drive Belt.....	127
Starting and Lighting Equipment.....	128
Traction Clutch Adjustment.....	135
Adjusting Transmission Brake	136
Valve Tappet Clearance.....	137
Power Take-off Clutch Adjustment.....	139
Adjusting Differential Brakes.....	140
Repacking and Adjusting Front Wheel, Bearings.....	141
Adjusting Steering Mechanism.....	142
Storing the Tractor.....	144
Index.....	146
Warranty.....	148

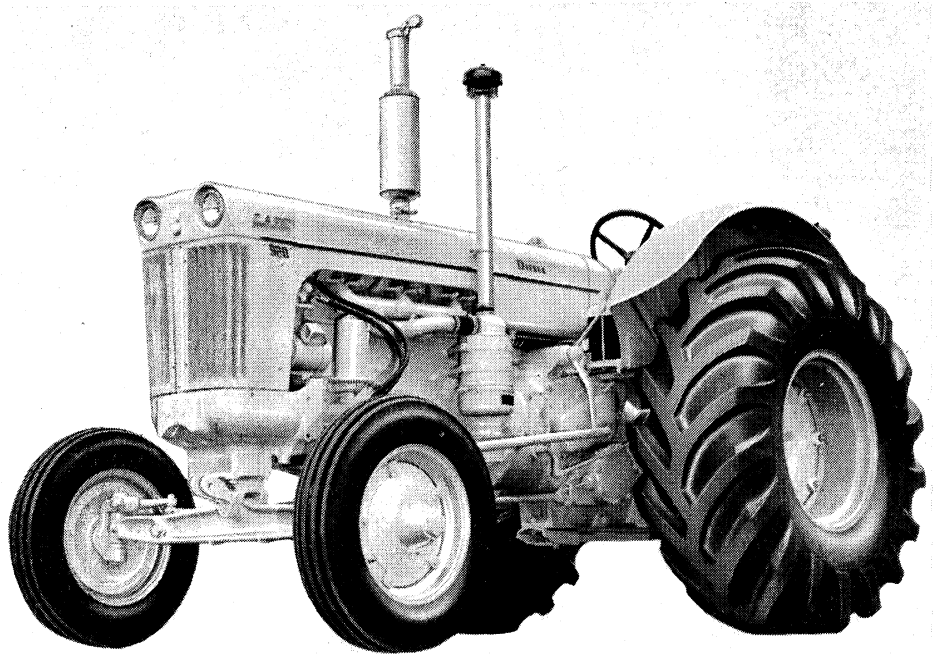


Figure 1. Illustrates Hydraulic Power Steering on Case 900 Diesel Tractor

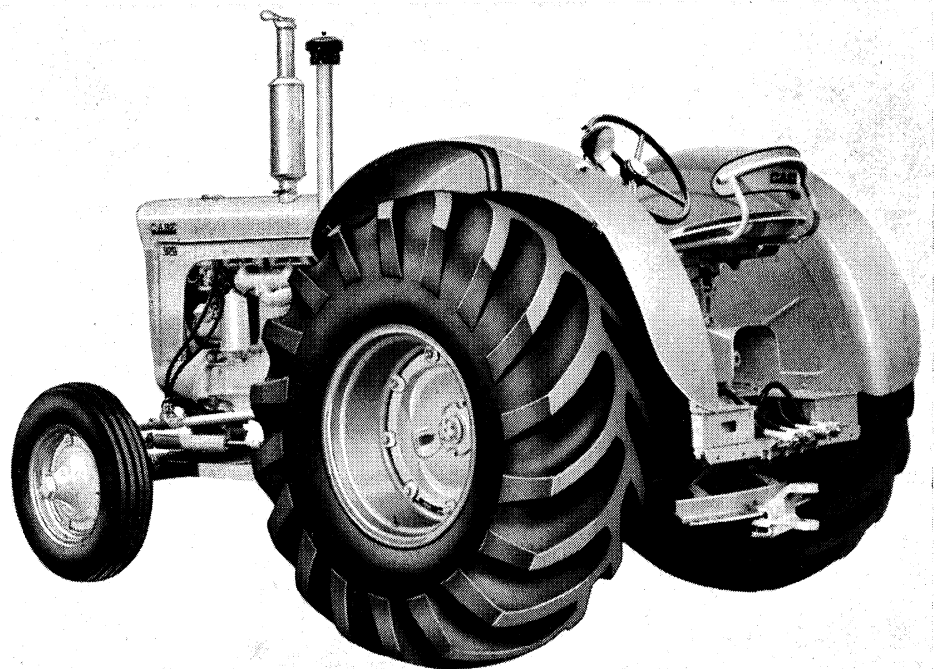


Figure 2. Illustrates Full Fenders, Wide Swinging Drawbar and Hydraulics

INTRODUCTION

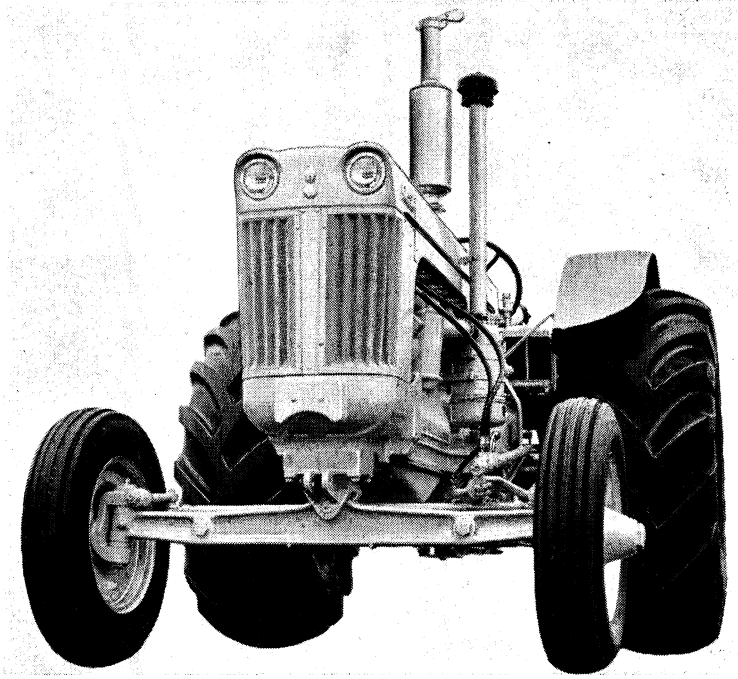


Figure 3.

The Case Model 900 Diesel Tractor is powered by a rugged six cylinder full diesel engine that is noted for its quiet operating characteristics and economy of operation.

The transmission, 6 Speeds forward and 1 reverse, provides a full range of working speeds to handle all implements and tools in any type or condition of soil. The high speed (6th) road gear brings your fields closer to the farm yard in terms of non productive time spent on the road.

Advanced engineering includes the CASE POWRCEL combustion system which produces all of the available power out of each charge of injected fuel. To protect the closely fitted precision parts, the finest filters available have been provided to clean the fuel, the intake air and the crankcase oil.

The four basic rules of Diesel Engine operation, which are the deciding factors in determining the service life and economy of operation that you will receive from your tractor, are as follows:

1. CLEAN FUEL

- (a) Use only Number 2 Diesel Fuel that meets the specifications listed in this manual.
- (b) Follow the instructions regarding the recommended precautions when handling and storing fuel.

2. AIR CLEANER

Service the air cleaner regularly.

3. CRANKCASE OIL

Diesel Engines require the use of a heavy duty engine oil. Select oil that meets the proper service designations recommended in the lubrication section of this manual.

4. PERIODIC CHECKUPS

Your authorized Case Dealer has the service knowledge necessary to keep your tractor in top running condition.

Arrange to have him check your tractor at regular intervals.

NOTE: The terms "Right Hand" and "Left Hand" whenever used in this manual apply to the tractor when facing in the direction the tractor will move in forward operation.

SERIAL NUMBER

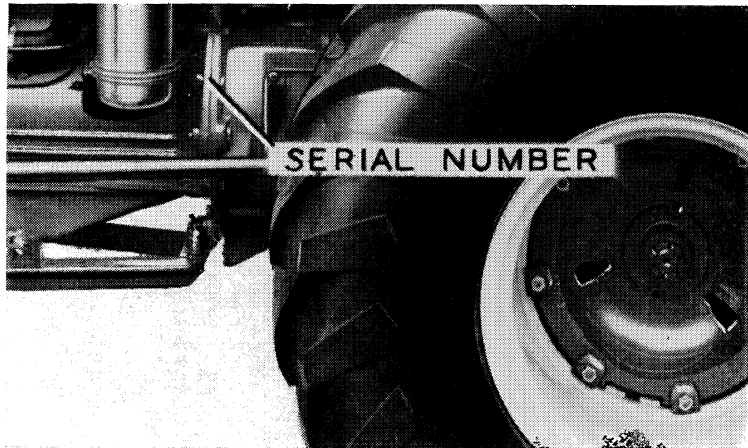


Figure 4.

When ordering parts from your Authorized Case Dealer and in all contacts or correspondence with your dealer relative to the tractor, always specify the Serial Number and Model of your tractor.

The model and serial numbers are stamped on the number plate located on the right hand side of the instrument panel. See Figure 5. The serial number is also stamped on the left rear side of the engine block near the air cleaner, Figure 4.

For reference, fill in the Serial number of your 900 Series Diesel Tractor in the space provided below.

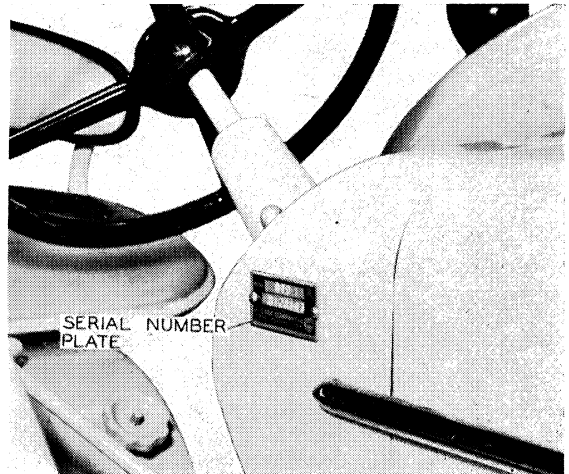


Figure 5

Model.....Serial No.....

Thank you so much for reading.
Please click the “Buy Now!”
button below to download the
complete manual.



After you pay.

You can download the most
perfect and complete manual in
the world immediately.

Our support email:

ebooklibonline@outlook.com