

**730-830 Diesel
Tractor**
Operators Manual

9-862

Reprinted

CASE III



This symbol means ATTENTION! BECOME ALERT! YOUR SAFETY IS INVOLVED. The message that follows the symbol contains important information about your safety. Carefully read the message. Make sure you fully understand the causes of possible injury or death.

SB001

IF THIS MACHINE IS USED BY AN EMPLOYEE, IS LOANED, OR IS RENTED, MAKE SURE THAT THE OPERATOR UNDERSTANDS THE TWO INSTRUCTIONS BELOW.

BEFORE THE OPERATOR STARTS THE ENGINE:

1. GIVE INSTRUCTIONS TO THE OPERATOR ON SAFE AND CORRECT USE OF THE MACHINE.
2. MAKE SURE THE OPERATOR READS AND UNDERSTANDS THE OPERATOR'S MANUAL FOR THIS MACHINE.



IMPROPER OPERATION OF THIS MACHINE CAN CAUSE INJURY OR DEATH.

BEFORE STARTING THE ENGINE, DO THE FOLLOWING:

1. READ THE OPERATOR'S MANUAL.
2. READ ALL SAFETY DECALS ON THE MACHINE.
3. CLEAR THE AREA OF OTHER PERSONS.

LEARN AND PRACTICE SAFE USE OF MACHINE CONTROLS IN A SAFE, CLEAR AREA BEFORE YOU OPERATE THIS MACHINE ON A JOB SITE.

It is your responsibility to observe pertinent laws and regulations and to follow manufacturer's instructions on machine operation and maintenance.

See your Authorized Case dealer for additional operator's manuals, parts catalogs, and service manuals.

To the Purchaser of a Case Tractor,

The care you give your new Case tractor will greatly determine the satisfaction and service life you will obtain from it. Use this manual as your guide. By observing the instructions and suggestions in this manual, your Case tractor will serve you well for many years.

As an Authorized Case Dealer, we stock Genuine Case Parts, which are manufactured with the same precision and skill as the original equipment. Our factory trained staff is kept well informed on the best methods of servicing Case equipment and is ready and able to help you.

Should you require additional aid or information, contact us.

Your Authorized Case Dealer

To insure efficient and prompt service, please furnish us with the Model and Serial Number of your tractor in all correspondence or contacts.

TABLE OF CONTENTS

	Page
Serial Number	4
General Specifications	7
Diesel Engine Fuel	21
Fuel Specifications for a Suitable Number 2 Diesel Fuel	23
Fuel Recommendations for Cold Weather Operation	26
Fuel Handling and Storage	27
Lubrication	33
Recommended Lubricants and Approximate Capacities	35
Lubricating Point Locations	36
Engine Lubrication	42
Case-O-Matic Drive Lubrication	48
Independent Power Take-Off	52
Hydraulic Control System	53
Hydraulic Power Steering	55
Operating Instructions	57
Run-In Procedure	58
Operating Controls and Instrument Guide	60
Diesel Engine Starting Procedure	68
Stopping Engine	69
Cold Weather Operation	70
Intake Manifold Heater	72
Cold Weather Starting Fluid	73
Case-O-Matic Drive	75
Differential Brakes	83
Tire Sizes, Pressures, Rear Wheel and Front End Weights	84
Drawbar	86
Belt Pulley	89
Independent Power Take-off	91
Constant Hydraulic Control	95
Eagle Hitch	102

TABLE OF CONTENTS Continued

Rear Wheel Tread Spacing	107
Front Wheel Tread Spacing	119
Implement Warning Lamp	125
Important Checks During Operation	127
Service Suggestions	131
Preventive Maintenance	143
Fuel System	145
Bleeding Fuel System	148
Checking Condition of Fuel Filters	150
Servicing Fuel Filters	151
Air Cleaner	158
Crankcase Breathers	162
Case-O-Matic Breathers	162
Cooling System	163
Power Steering Drive Belt	169
Starting and Lighting Equipment	170
Adjusting Differential Brakes	179
Valve Tappet Clearance	180
Power Take-off Clutch Adjustment	182
Neutral Starting Safety Switch Adjustment	183
Repacking and Adjusting Front Wheel, Bearings	184
Storing the Tractor	187
Index	189

PERIODIC CHECKUPS

Your authorized Case Dealer has the service knowledge necessary to keep your tractor in top running condition.

Arrange to have him check your tractor at regular intervals.

NOTE: The terms "Right Hand" and "Left Hand" whenever used in this manual apply to the tractor when facing in the direction the tractor will move in forward operation.

SERIAL NUMBER

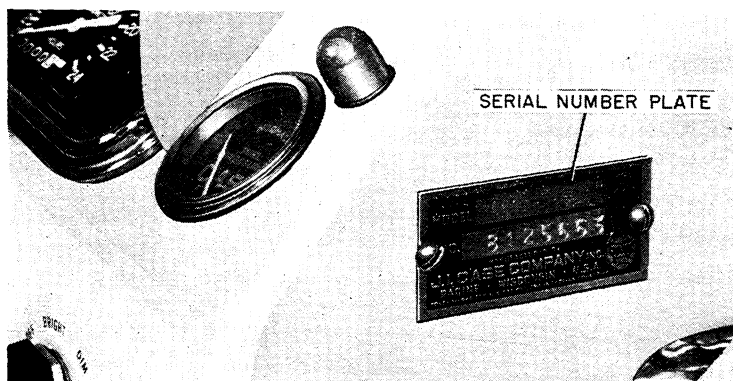


Figure 1. Number Plate on Instrument Panel

When ordering parts from your Authorized Case Dealer and in all contacts or correspondence with your dealer relative to the tractor, always specify the Serial Number and Model of your tractor.

The model and serial number is stamped on the number plate located on the instrument panel Figure 1. The serial number is also stamped on the left rear side of the engine block near the air cleaner, Figure 2.

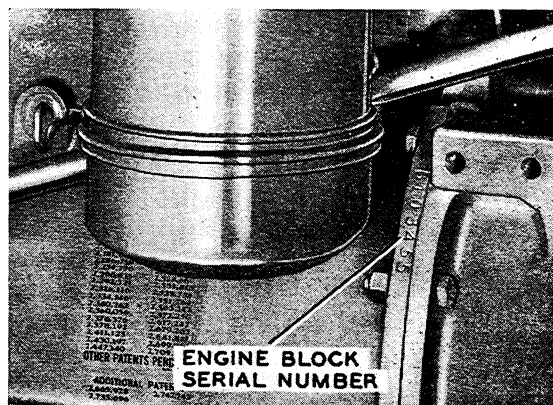


Figure 2. Serial Number Location on Engine Block

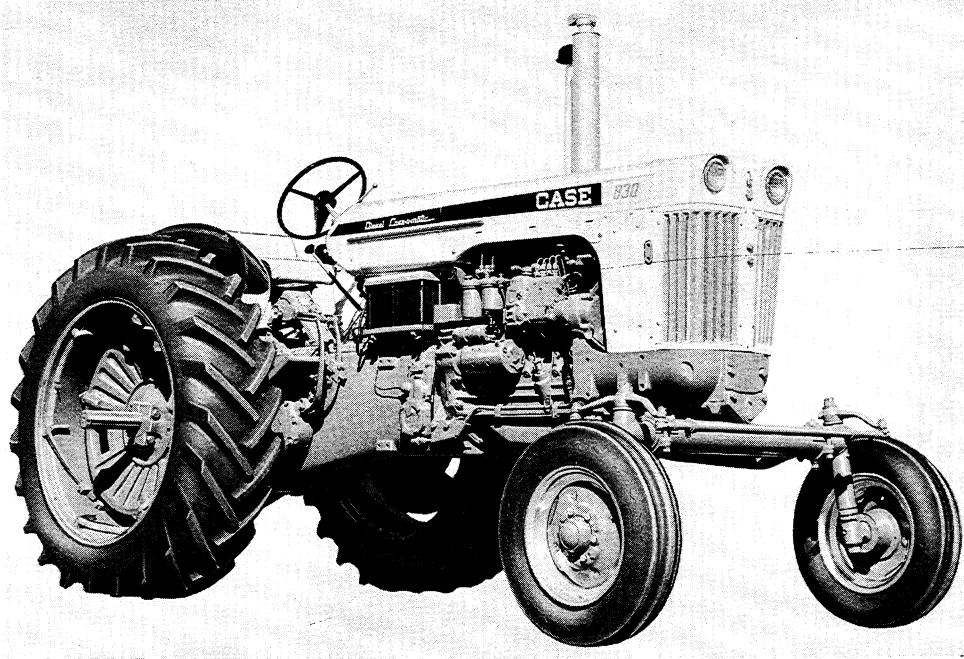
For reference, fill in the Serial number of your Case Diesel Tractor in the space provided below.

Model *Serial No.*

Model Designations

- 730 and 830 — Standard 4 Wheel Tractors
- 731 and 831 — General Purpose Tractors
- 732 and 832 — Special 4 Wheel Tractors
- 833 — High Clearance Tractors

INTRODUCTION



830 Series Diesel Tractor

Case-o-matic DRIVE

Easy handling... comfort... automatic control... an entirely new experience in tractor operation.

Case-o-matic Drive with its 8 "working ranges" in both Direct and Torque Converter drive give the exact speed for every job on the farm.

Heavy Tillage - Case-o-matic drive allows you to use a higher working range—can be operated in direct drive for maximum speed—simply flip into torque converter drive for additional power necessary to pull up a hill or for heavy draft demands.

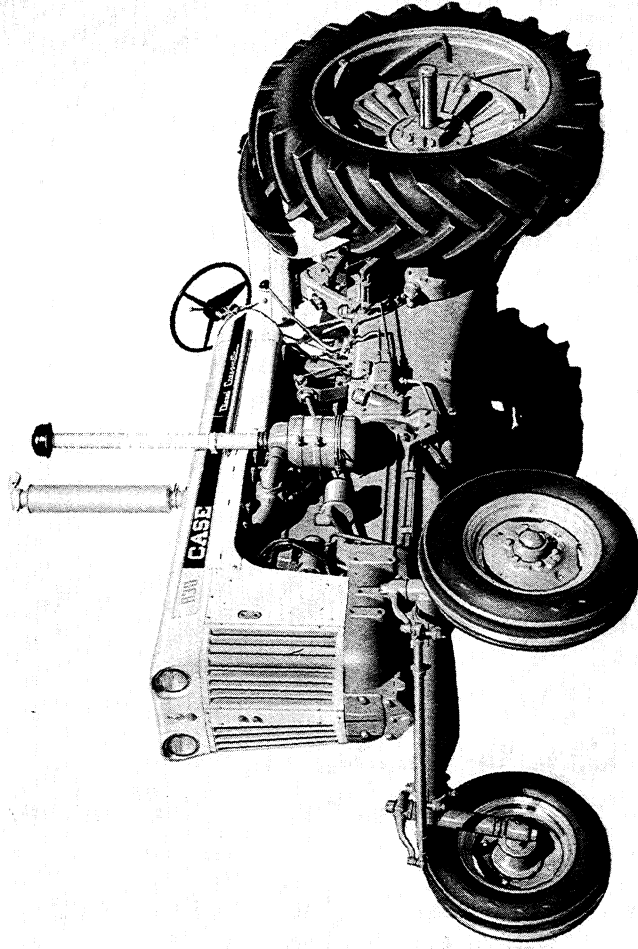
Cultivating or Planting - Torque converter drive and tiptoe acceleration give you complete control of travel speed for turning at the head lands or when approaching small plants.

Harvesting - Direct drive may be desirable for most harvesting operations. When heavy crops tend to overload your harvester, flip into torque converter drive and slow down forward speed while engine and PTO RPM stay high to clear the machine.

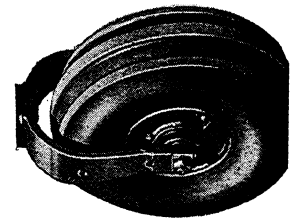
Hauling and Chore Work - Torque converter drive gives you that smooth easy start when transporting loads in 8th working range—after the load is moving, switch to direct drive for maximum speed.

**MODEL 831
GENERAL
PURPOSE
TRACTOR**

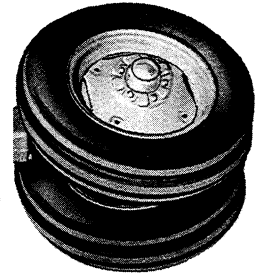
3 Tractors In 1



Adjustable
Front Axle
Attachment



Single
Front
Wheel
Attachment



Dual
Front
Wheel
Attachment

Thank you so much for reading.
Please click the “Buy Now!”
button below to download the
complete manual.



After you pay.

You can download the most
perfect and complete manual in
the world immediately.

Our support email:

ebooklibonline@outlook.com