

**430 Series
Gasoline Tractor**
Operators Manual

9-902

Reprinted

CASE III



This symbol means ATTENTION! BECOME ALERT! YOUR SAFETY IS INVOLVED. The message that follows the symbol contains important information about your safety. Carefully read the message. Make sure you fully understand the causes of possible injury or death.

SB001

IF THIS MACHINE IS USED BY AN EMPLOYEE, IS LOANED, OR IS RENTED, MAKE SURE THAT THE OPERATOR UNDERSTANDS THE TWO INSTRUCTIONS BELOW.

BEFORE THE OPERATOR STARTS THE ENGINE:

1. GIVE INSTRUCTIONS TO THE OPERATOR ON SAFE AND CORRECT USE OF THE MACHINE.
2. MAKE SURE THE OPERATOR READS AND UNDERSTANDS THE OPERATOR'S MANUAL FOR THIS MACHINE.



WARNING

IMPROPER OPERATION OF THIS MACHINE CAN CAUSE INJURY OR DEATH.

BEFORE STARTING THE ENGINE, DO THE FOLLOWING:

1. READ THE OPERATOR'S MANUAL.
2. READ ALL SAFETY DECALS ON THE MACHINE.
3. CLEAR THE AREA OF OTHER PERSONS.

LEARN AND PRACTICE SAFE USE OF MACHINE CONTROLS IN A SAFE, CLEAR AREA BEFORE YOU OPERATE THIS MACHINE ON A JOB SITE.

It is your responsibility to observe pertinent laws and regulations and to follow manufacturer's instructions on machine operation and maintenance.

See your Authorized Case dealer for additional operator's manuals, parts catalogs, and service manuals.

To the Purchaser of a Case Tractor,

The care you give your new Case tractor will greatly determine the satisfaction and service life you will obtain from it. Use this manual as your guide. By observing the instructions and suggestions in this manual, your Case tractor will serve you well for many years.

As an Authorized Case Dealer we stock Genuine Case Parts, which are manufactured with the same precision and skill as the original equipment. Our factory trained staff is kept well informed on the best methods of servicing Case equipment and is ready and able to help you.

Should you require additional aid or information, contact us.

Your Authorized Case Dealer

To insure efficient and prompt service, please furnish us with the Model and Serial Number of your tractor and Serial Number of your engine, in all correspondence or contacts.

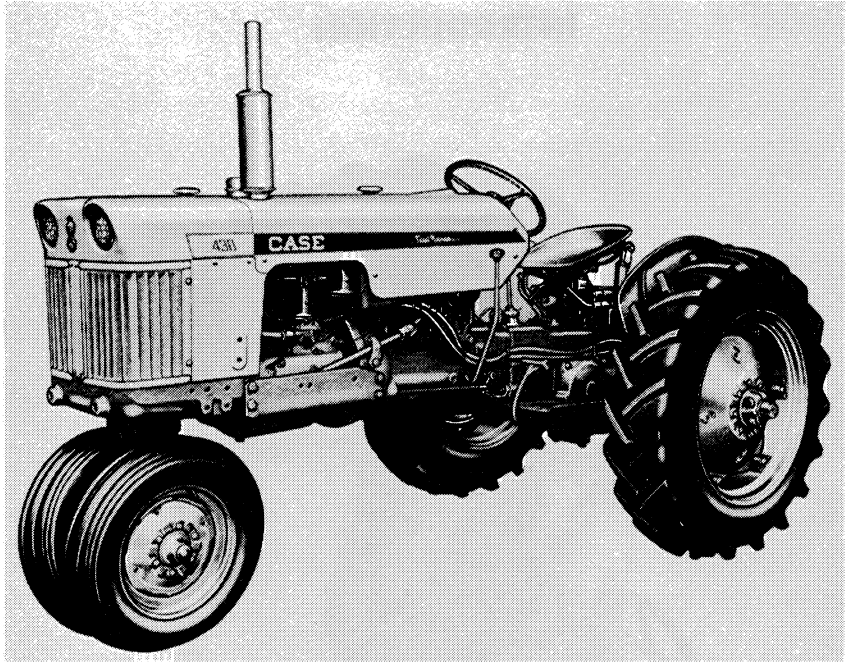
TABLE OF CONTENTS

	Page
Serial Numbers	6
General Specifications	7- 12
Lubrication	13- 27
Pressure Fittings	16- 17
Engine Lubrication	20- 22
Transmission Lubrication	23
Steering Gear	23
Hydraulic System	25- 27
Power Steering	17, 67
Operating Instructions	29- 74
Pre-Starting Check List	30
Operating Controls and Instruments	32- 34
Run-In Procedure	35
Engine Starting Procedure	36- 37
Stopping the Engine	37
Differential Brakes	38
Tripl-Range Drive	40- 41
Dual-Range Shuttle	42
Eagle Hitch and Hydraulic System	43- 48
Three-Point Hitch (with Swinging Draft Arms).....	49
Remote (Portable) Cylinder Attachment.....	50- 51
Rear Wheel Spacing	52- 54
Power Adjusted Wheels	55- 56
Front Wheel Spacing	57- 58
Belt Pulley Attachment	59- 61
Constant Running P.T.O.	62- 63
P.T.O. Output Shaft.....	64- 65
Drawbar	66
Tractor Accessories	67- 68
Cold Weather Operation	69- 70
Fuel Storage	71
Important Checks During Operation	72- 73
Service Suggestions	75- 81
Preventive Maintenance	83-109
Cooling System	84- 89
Fuel and Fuel System	91- 93
Governor and Engine Speed	94
Valve Adjustment	95, 96
Ignition and Electrical Equipment	97-103
Front Wheel Bearings	104
Flywheel Clutch and Pedal Linkage	105
Differential Brakes and Adjustment	106
Tractor Storage	107-108
Index, Alphabetical	109-110

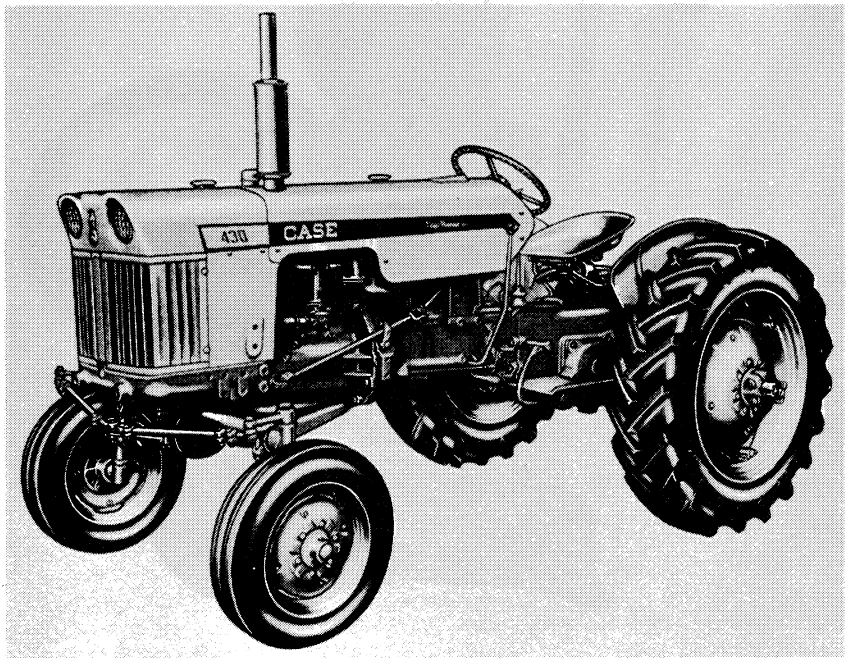
INTRODUCTION



Case Model 440 4-Wheel Utility Tractor



Case Model 441 General Purpose - Dual Front End



Case Model 441 General Purpose - Adj. Front Axle

INTRODUCTION

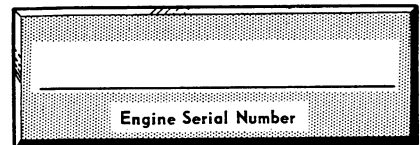
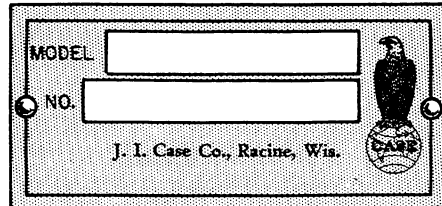
Here's just a few outstanding features of the Case "440-441" Model Tractors:

1. **"POWR-TORQ" ENGINE.** A high-compression, heavy-duty 148 cubic inch with an extremely high torque. What's more it operates on regular grade gasoline. Spin on full-flow oil filter.
2. **HEAVY-DUTY CLUTCH.** New clutch design with 50% more "torque-carrying" capacity. Smooth, long-life operation.
3. **SPEED CONTROL.** "All-Speed" friction type hand throttle with finger tip, finger-ease control.
4. **CAM AND LEVER STEERING.** Smooth-as-silk, shockproof steering for accurate, instant control of front wheels. Power steering attachment available for either utility or general purpose tractors.
5. **DIFFERENTIAL BRAKES.** High-capacity 6-inch double-disk, velvet touch, brakes. Simple to adjust, a breeze to service.
6. **HEAVY-DUTY TRANSMISSION.** Standard (4) speed transmission provides speeds of 2.7, 4.0, 5.2, 12.9 m.p.h. forward, and a speed of 3.2 m.p.h. in reverse. A special high speed road gear is also available as a factory installed extra.
7. **TWELVE-SPEED "TRIPL-RANGE" DRIVE (EXTRA).** This remarkable power train provides forward speeds from 1.6 to 21.5 m.p.h. and reverse speeds from 1.9 to 5.4 m.p.h. (see page 11).
8. **DUAL-RANGE SHUTTLE (EXTRA).** Provides (8) speeds forward and (8) speeds in reverse. Provides faster working cycles when using a front end loader since reverse speeds are 25% faster than forward, in any gear. (see page 11).
9. **CONSTANT-RUNNING POWER TAKE-OFF (EXTRA).** This is a "straight-line" power shaft from engine to rear shifter fork. In use, it allows the rear wheels to be stopped, while the P.T.O. shaft rotation remains at normal speed.
10. **EAGLE-HITCH (EXTRA).** Improved, enclosed, streamlined, assembly with quick, simple implement attaching points. Handier than ever, more compact, more lifting power, greater ease of operation. And for your safety a built-in "hydraulic interlock" to prevent accidental "dropping" of mounted tools. Double control and remote cylinder system can easily be attached at any time.
11. **THREE-POINT HITCH (Swinging Draft Arms) (EXTRA).** This is an optional hitch which will accommodate rear-mounted tools other than Case. This hitch is actuated and controlled by the same hydraulic system as the Eagle Hitch linkage.
12. **SAFETY STARTING.** Combination of ignition switch and transmission safety switch.
13. **CHOICE OF MODELS.** 1. A low-silhouette Model "440" utility tractor with a solid front axle. 2. A standard general purpose Model "441" with dual front wheels. This model is also available with an adjustable front axle as extra equipment.

TRACTOR SERIAL NUMBERS

When ordering parts from your Authorized Case Dealer, always specify the Serial Number and Model of your Tractor.

As a means of ready reference fill in the serial numbers along with the model number of your tractor, in the spaces provided here.



When ordering Tractor Parts, specify the Tractor Model and Serial Number, located on the tractor "dash."

Use the Engine Serial Number, stamped on the right side of the engine block, when ordering Engine Parts.

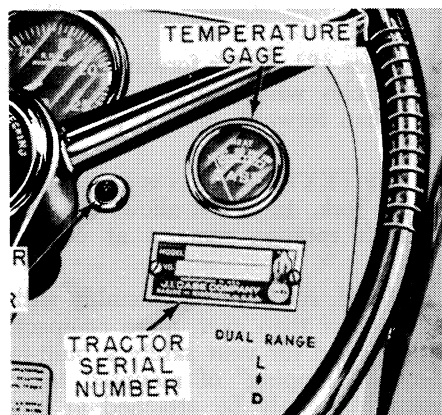


Fig. 1. Tractor Number

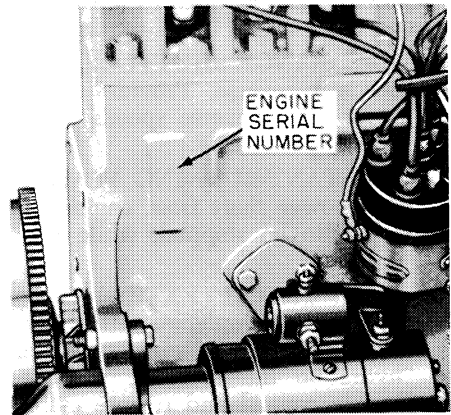
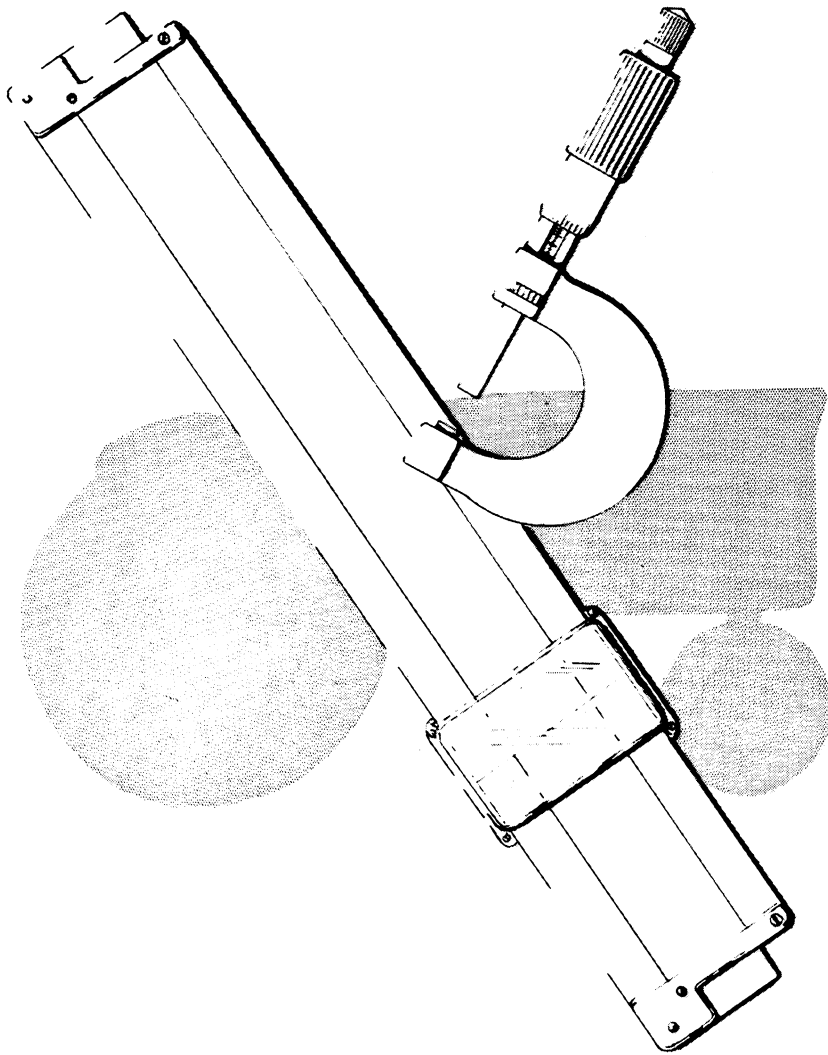


Fig. 2. Engine Number

The information compiled in this manual covers the operation and preventive maintenance on the Case "440-441" Tractors. It is our hope that this manual will help you to understand the correct care and use of this tractor.

If you should require additional information or services of a trained mechanic, be sure to see your authorized CASE DEALER.

NOTE: The terms "Right Hand" and "Left Hand" whenever used in this manual apply to the tractor when facing in the direction the tractor will move in forward operation.



GENERAL SPECIFICATIONS

GENERAL SPECIFICATIONS

Engine (Gasoline)

GENERAL

Type	Four Cylinder; Overhead Valve
Firing Order	1 - 3 - 4 - 2
Cylinder Bore	3 $\frac{3}{8}$ "
Stroke	4 $\frac{1}{8}$ "
Piston Displacement	148 cubic inches
Compression Ratio	7.1 to 1
Valve Guides	Replaceable
Exhaust Valve Rotators	Positive Type
Valve Clearance	.014 (cold)
Cylinder Sleeves	Wet Replaceable Type
Air Cleaner	Oil Bath Type
Full Load Engine Speed	1750 R.P.M.
No Load Engine Speed	1925 R.P.M.
Engine Idling Speed	500 R.P.M.
Governor Type	Case Sensitive Flyweight
Engine Speed Control	Combination Friction Type Hand Control and Foot Control

PISTONS AND RODS

Rings Per Piston	4
Number of Compression Rings	3
Number of Oil Rings	1
Piston Pins	Full Floating
Connecting Rod Bearings	Precision Insert Type

MAIN BEARINGS

Number of Bearings	3
Type of Bearings	Precision Insert Type

ENGINE LUBRICATION SYSTEM

Oil Pressure	14-20 lbs. (at 1750 R.P.M.)
Oil Pump	Gear Type with Floating Intake
Oil Filter	Full Flow—Replaceable cartridge element

FUEL SYSTEM

Carburetor	1" S.A.E. Flange
Fuel Strainer	In Sediment Bowl Under Tank

COOLING SYSTEM

Pressurized System with 4 lb. Pressure Cap	
Radiator	Tube and Fin Construction
Temperature Control	Thermostat
Fan	16" Four Blade, Belt Driven
Water Pump	Sealed, Pre-lubricated Bearings

ELECTRICAL AND IGNITION SYSTEM

Ignition Switch Key Locking Type
Battery (dry charge type) 12 Volt, 50 Amp. Hr. Positive Post Grounded
Spark Plugs: Champion #D16; AC-86 Comm. or equivalent Thread 18 mm.
Gap .025"
Distributor Automatic Advance 26°
Point Gap — .020"
Generator (3-brush type) Third brush not adjustable With Voltage Regulator
Starting Motor With Sealed Starter Drive
Head Lights 12 Volt, Sealed Beam Units
Rear Light 12 Volt, Combination Tail and Flood with Electrical Outlet
for Safety Light Attachment
Fuse (Dash Location) 20 Amp. in Light Circuit

FLYWHEEL CLUTCH (FOOT OPERATED)

Type (Std. 4-Speed or Tripl-Range) Single Plate, Dry Disk, (9¼" dia.)
Type (Dual Range Shuttle) Single Plate, Dry Disk, (11" dia.)
Throw-Out Bearing Sealed, Ball-Thrust

STANDARD TRANSMISSION

Speeds (4) Forward; (1) Reverse
†High Speed 4th Gear (Optional Equipment)

TRIPL-RANGE DRIVE (OPTIONAL)

Speeds Provides (12) Speeds Forward, and (3) Speeds Reverse

†*DUAL RANGE SHUTTLE (OPTIONAL - UTILITY ONLY)

Speeds Provides (8) Speeds Forward and (8) Speeds Reverse with High
Speed 4th Gear and Heavy Duty Clutch

*(Cannot be used with Constant-Running P.T.O., Tripl-Range or Belt Pulley)

BRAKES

Type Heavy Duty, 6-inch Double Disk Differential Brakes
Pedals Can Be Locked Together or Operated Independently
Pedal Catch for Parking or Belt Work

STEERING GEAR AND FRONT AXLES

Steering Gear Type Cam and Lever gear with center-line control
Front Axle Type Model 441 Tractors; Dual or Adjustable Front Axles
Model 440 Utility Tractors, Fixed Front Axle

STANDARD POWER TAKE-OFF (OPTIONAL)

Output Shaft Standard 1½" A.S.A.E.
Rotation Clockwise (from rear)
Speed 533 R.P.M. (at 1750 R.P.M. engine speed)
Method of Engagement Hand Shift Rod at Rear of Tractor
Height from Drawbar to Centerline of P.T.O. Shaft 10"

†Factory Installation Only

CONSTANT-RUNNING POWER TAKE-OFF (OPTIONAL)

(With Multiple Plate Clutch)

Output Shaft Size, Rotation and Position (same as standard P.T.O.)
Method of Engaging Tractor Foot Clutch Pedal
Hand Lever (To Control Engine Power to Tractor Rear Wheels)
Size and Type of Clutch Wet Type – 5 inch Dia., 11 plate

BELT PULLEY ATTACHMENT (EXTRA)

Pulley Diameter 10 $\frac{1}{4}$ " Face Width 6"
Side Mounted (Prior to Serial Number 8191147)
1190 R.P.M. at 1750 Engine R.P.M.
Belt Speed 3193 Ft. Per Minute Full Load
Rear Mounted (Serial Number 8191147 and after)
1105 R.P.M. at 1750 Engine R.P.M.
Belt Speed 2970 Ft. Per Minute Full Load

EAGLE HITCH AND HYDRAULIC SYSTEM (OPTIONAL)

Type System Single acting with Floating Piston
Hydraulic Pump Continuous Running
Relief Valve Pressure 1300-1500 P.S.I.
Control Hand operated (with Adjustable Limit Stops)
Filter Edge-Wound Paper Element (replaceable)
Safety Interlock Built-in Unit, Prevents Accidental "Dropping" of Implements
Fluid Recommendations S.A.E. 10W-30 Multi-Viscosity Engine Oil

THREE-POINT HITCH (SWINGING DRAFT ARMS) (EXTRA)

Type Flexible Swinging Draft Arms with Ball Couplers
Hydraulic System Same System and Controls as Eagle Hitch
Stabilizer Bars and Stay Chains Available for Rigid Draft Arm Action

REMOTE (PORTABLE) CONTROL SYSTEM (EXTRA)

Remote (Portable Cylinder) 3 $\frac{1}{4}$ " Dia. 8" Stroke
Remote Cylinder Control Stacked Control Valve with Matched Controls
and Control Lever
Remote Cylinder Couplings Case Quick-Detachable Breakaway Couplings
with Dust Plugs

APPROXIMATE CAPACITIES

		U.S.	Imperial
Cooling System	(Quarts)	12	10.02
Engine Crankcase	(Quarts)	4	3.34
	(with filter) (Quarts)	5	4.18
Air Cleaner Oil Cup	(Pints)	1	0.83
Fuel Tank	(Gallons)	13	10.86
Hydraulic System (Torque Tube)	See Page 15		
Transmission Case (Model 441)	(Gallons)	6	5.01
Transmission Case (Model 440)	(Quarts)	17	14.20

TIRE AND WHEEL EQUIPMENT

	General Purpose Tractor	Utility Tractor
Front Tires (Standard)	5.00-15 - 4 Ply	5.50-16 - 4 Ply
Front Tires (Optional)		7.50-16 - 4 Ply
Front Tires (Optional)		6.00-16 - 6 Ply
Rear Tires (Standard)	10-28 - 4 Ply	10-24 - 4 Ply
Rear Tires (Optional)		11-24 - 4 Ply
Rear Tires (Optional)	12.4-28 - 4 Ply	13-24 - 6 Ply

APPROXIMATE TRAVEL SPEEDS (1750 R.P.M.)

Standard Transmission	General Purpose Tractor		Utility Tractor	
	10-28 Tires	11-28 Tires	10-24 Tires	11-24 Tires
First Speed	2.5 m.p.h.	2.6 m.p.h.	2.3 m.p.h.	2.4 m.p.h.
Second Speed	3.7 m.p.h.	3.8 m.p.h.	3.3 m.p.h.	3.5 m.p.h.
Third Speed	4.8 m.p.h.	5.0 m.p.h.	4.4 m.p.h.	4.6 m.p.h.
Fourth Speed	11.9 m.p.h.	12.4 m.p.h.	10.8 m.p.h.	11.3 m.p.h.
Reverse	3.0 m.p.h.	3.0 m.p.h.	2.7 m.p.h.	2.8 m.p.h.
Tripl-Range Drive	General Purpose Tractor		Utility Tractor	
	10-28 Tires	11-28 Tires	10-24 Tires	11-24 Tires
First Speed	1.5 m.p.h.	1.6 m.p.h.	1.4 m.p.h.	1.4 m.p.h.
Second Speed	2.2 m.p.h.	2.3 m.p.h.	2.0 m.p.h.	2.1 m.p.h.
Third Speed	2.5 m.p.h.	2.6 m.p.h.	2.3 m.p.h.	2.4 m.p.h.
Fourth Speed	2.9 m.p.h.	3.0 m.p.h.	2.6 m.p.h.	2.7 m.p.h.
Fifth Speed	3.7 m.p.h.	3.8 m.p.h.	3.3 m.p.h.	3.5 m.p.h.
Sixth Speed	4.2 m.p.h.	4.3 m.p.h.	3.8 m.p.h.	4.0 m.p.h.
Seventh Speed	4.8 m.p.h.	5.0 m.p.h.	4.4 m.p.h.	4.6 m.p.h.
Eighth Speed	6.0 m.p.h.	6.3 m.p.h.	5.5 m.p.h.	5.8 m.p.h.
Ninth Speed	8.0 m.p.h.	7.4 m.p.h.	6.5 m.p.h.	6.8 m.p.h.
Tenth Speed	11.3 m.p.h.	8.3 m.p.h.	7.3 m.p.h.	7.6 m.p.h.
Eleventh Speed	11.9 m.p.h.	12.4 m.p.h.	10.8 m.p.h.	11.3 m.p.h.
Twelfth Speed	19.8 m.p.h.	20.6 m.p.h.	18.0 m.p.h.	18.8 m.p.h.
First Reverse	1.8 m.p.h.	1.8 m.p.h.	1.6 m.p.h.	1.7 m.p.h.
Second Reverse	3.0 m.p.h.	3.1 m.p.h.	2.7 m.p.h.	2.8 m.p.h.
Third Reverse	4.9 m.p.h.	5.1 m.p.h.	4.5 m.p.h.	4.7 m.p.h.

DUAL-RANGE SHUTTLE SPEEDS*

	Low Range				Direct Range			
	1st	2nd	3rd	4th	1st	2nd	3rd	4th
Forward	1.4	2.1	2.7	9.2	2.3	3.3	4.4	14.8
Reverse	1.7	2.6	3.4	11.4	2.8	4.1	5.4	18.4

*@1750 R.P.M. with 10-24 Tires

	Low Range				Direct Range			
	1st	2nd	3rd	4th	1st	2nd	3rd	4th
Forward	1.6	2.4	3.1	10.6	2.6	3.8	5.0	16.9
Reverse	2.0	2.9	3.9	13.1	3.2	4.7	6.2	21.0

*@1750 R.P.M. with 13-24 Tires

Thank you so much for reading.
Please click the “Buy Now!”
button below to download the
complete manual.



After you pay.

You can download the most
perfect and complete manual in
the world immediately.

Our support email:

ebooklibonline@outlook.com