

TO THE OWNER OF A CASE IH TRACTOR

Use this manual as your guide. If you follow the instructions given in this manual, your Case IH Tractor will work well for many years.

Your Dealer can give you assistance with J I Case Company made parts and persons with special training that know the best methods of repair and maintenance for your tractor.

Call your Dealer if you need any assistance or information.

Your Authorized Case IH Dealer



Figure 1

NOTE: When you are in the tractor seat looking forward, the right hand and left hand of the tractor are the same as your right hand and left hand.

SERIAL NUMBERS

When ordering parts or when requesting information or assistance always give the model and serial numbers of your tractor.

Write the model and serial numbers of your tractor on the lines below.

1. TRACTOR MODEL NUMBER _____

PRODUCT IDENTIFICATION NUMBER _____

2. ENGINE SERIAL NUMBER _____

3. TRANSMISSION SERIAL NUMBER _____

4. CAB SERIAL NUMBER _____

5. MFD AXLE SERIAL NUMBER _____

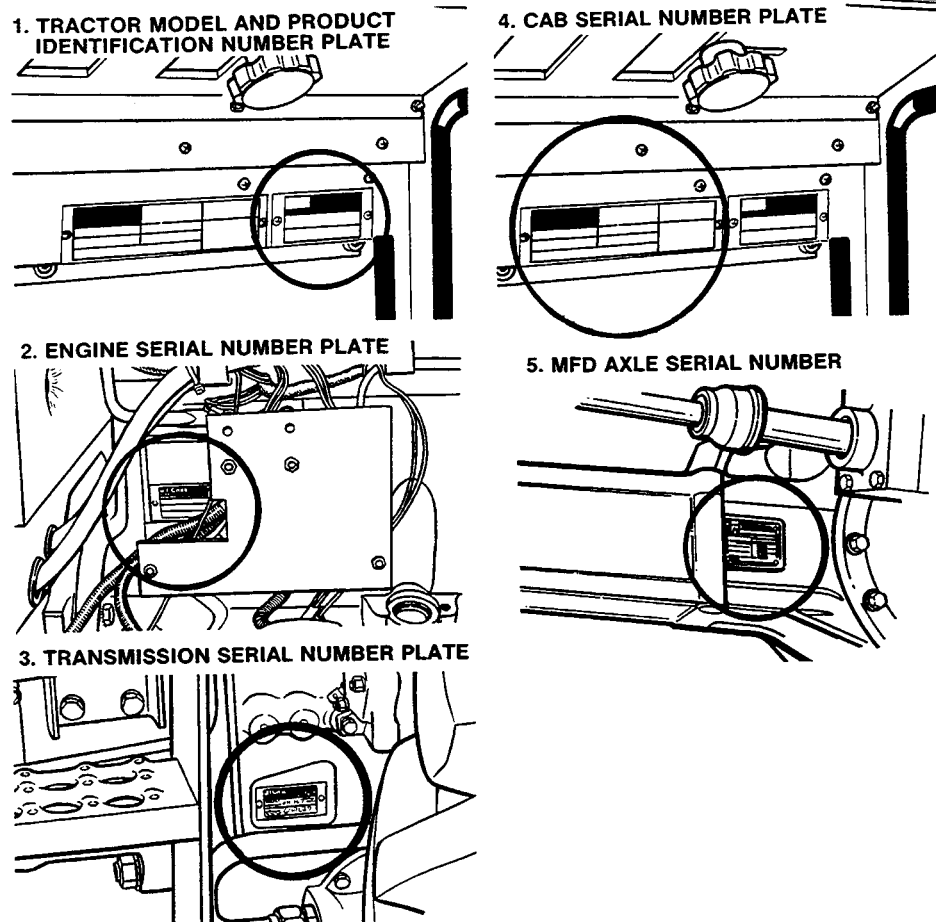


Figure 2

TABLE OF CONTENTS

TO THE OWNER	I	DIGITAL INSTRUMENT CLUSTER (Cont'd)	
SERIAL NUMBERS	II	PTO RPM Function	57
SAFETY	V-XXII	Timer Function	58
Safety Rules	V	Area/Hour Function	59
Before Starting	V,VI	Area Done Function	59
Operation	VII-XII	Wheel Slip Function	60,61
Service	XIII-XV	Ground Speed Function	61
HAND SIGNALS	XVI-XVII	Instrument Cluster Programming ...	62-70
DECALS	XVIII-XXII	Tire Code Number	63
DIESEL ENGINE SPECIFICATIONS	1,2	Standard Program Code Number ..	63
GENERAL SPECIFICATIONS	3-7	Dynamic Tire Code Number	64,65
TRAVEL SPEEDS	8	Static Tire Code Number	66-68
MEASUREMENTS AND WEIGHTS	9-12	Programming Attachment Width	69,70
ROPS MACHINE WEIGHT	9-12	Automatic Shutdown System	71,72
TIRE AND WHEEL SPECIFICATIONS .	13-16	True Ground Speed Sensor	73
Tire Inflation Pressure	15,16	OPERATING CONTROLS	74-104
Tire Load Capacity	16	Steering Console	74,75
TIRE SIZE COMBINATIONS	17,18	Foot Pedals	76,77
MFD Type I	17	Operators Console	78-83
MFD Type II	18	Mechanical Front Drive (MFD)	84
FRONT WHEEL TREAD POSITIONS ...	19-23	Steering Column Tilt	85
MFD Type I	20-22	Telescopic Steering Column	85
Wheel Mounting Torques	21	Cab Headliner Controls	86,87
Steering Stops	21,22	Cab Air Flow Control	88
MFD Type II	23	Cab Defroster Control	88
REAR WHEEL TREAD POSITIONS ...	24-27	Cab Air Flow Arrangements	89-91
DIESEL FUEL SPECIFICATIONS	28	Air Conditioner Operation	92
LUBRICATION	29-44	Heater Stop Valve	92
Engine Hourmeter	29	Rear View Mirrors	93
Lubrication Chart	30-32	Cab Window Lever	93
Engine Lubrication	33-36	Operators Seat	94-97
Engine Oil Change	34	Seat Belts	98,99
Engine Oil Filters	35	Amber Warning Lamps, Direction	
Engine Oil Selection	36	Turn Signals & SMV	100-102
Transmission Lubrication	37	Auxiliary Outlet Socket	103
Trans/Hydraulic Oil Filters	38-40	Cab Door Lock	104
Differential Lubrication - Type I	41	Fuel Tank Water Trap	104
Differential Lubrication - Type II	42	OPERATING INSTRUCTIONS	105-175
Planetary Lubrication - Type I	43	Run-In Procedure	105,106
Planetary Lubrication - Type II	44	Before Starting the Engine	107
Steering & Brake System Air Removal ..	45	Towing	108
Front Wheel Bearings	46	How to Transport the Tractor	108
Front Wheel Pivot Pin Bearing	47	Starting Procedure	109,110
DIGITAL INSTRUMENT CLUSTER ...	48-73	Stopping the Engine	111
English/Metric Mode Selection	49	Cold Temperature Operation	112,113
Engine Hourmeter	49	Cold Temperature Starting	114,115
Turn Signal Indicator	49	Ether Starting Fluid	114,115
Service Monitors and Bar Indicators .	50-56	Container Replacement	116
Function Buttons	57-61	Coolant Heater	117
Engine RPM Function	57	Power Shift Transmission	118,119
		Differential Lock	120
		Power Takeoff	121-125
		Operating Power Takeoff	121
		540 or 1000 RPM PTO Operation	122
		Drawbar Position	123
		Guards	124
		Operating Safety	125

TABLE OF CONTENTS

OPERATING INSTRUCTIONS (Cont'd)

Drawbar	126
Roller Drawbar	127
Drawbar Clevis	128
Connecting Implement	129
Safety Chain	130
Three Point Hitch System	131
Hitch System Adjustments	132
Lift Links and Upper Link	132,133
Sway Blocks	134
Extendable Draft Arms	134
Anti-Sway Chain	134
Lowering Speed Regulator Valve	135
Draft Arm Mechanical Flotation	135
Hitch Operation	136-139
Connect Implement	136
Hitch Control Lever	136,137
Sensing Control	138,139
Stationary Depth	139
Hydraulic Float Control	139
Hitch Coupler Category II	140
Hitch Coupler Category II-III	141-143
Remote Hydraulic Control	144-148
Remote Control Levers	144,145
Variable Flow Control	146,147
Operating the Remote Circuits	148
Hydraulic Motors	148
Remote Valve with Load Check	148
Remote Hydraulic Hose Couplers	149
Remote Hydraulic Hose Coupling	150,151
Remote Cylinder	152
Hydraulic Cylinder Jack Pads	153
Front Wheel Fenders	154-157
Front Axle Adjustment	158
Rear Wheel Adjustment	159-162
Dual Wheel Installation	163-165
Loads Matched to Tractor	166
Tractor Ballast	167-175
Tractor Weight Distribution	167-169
Measuring Wheel Slip	170
Tractor and Equipment Weight	171
Front End Weights	172
Rear Wheel Weights	173
Tire Liquid Weight	174,175
PREVENTIVE MAINTENANCE	176-234
Tire and Rim Service	177,178
Hood and Side Panels	179
Cooling System	180-189
Pressure Cooling System	180
Cleaning the Cooling System	181
Coolant Solutions	182
Engine Cooling System Treatment	182
Grill Screens and Radiator Area	183
Thermostat Check	184
Thermostat Replacement	184-186
Fan Belt Adjustment	187

PREVENTIVE MAINTENANCE (Cont'd)

Fan Belt Replacement	188
Water Filter and Conditioner	189
Fuel System	190-195
Service Intervals	190
Fuel Shutoff Valve	190
Fuel Filter Replacement	191,192
Fuel Strainer	193,194
Air Removal	194,195
Air Induction System	196-206
Service Intervals	196
Air Filter	197
Air Filter Service Monitor	198
Air Filter Service	199-202
Aspirated Strata Tube Service	203-205
Tubes and Hoses	206
Neutral Start Switch	207,208
Electrical System	209-213
Head Lamps	209
Flood Lamps	209
Flashing Amber Warning Lamps	210
Tail Lamp	210
Instrument Cluster Lamps	211
Fuse Panel	211
Head Lamp Adjustment	212
Alternator Charging System	213
Batteries	214-217
Service Interval	214
Vent Caps	214
Access to Batteries	215
Battery Cables and Terminals	215
Removal and Installation	216
Batteries Not In Use	216
Auxiliary Battery Connections	217
Roll Over Protective Structure (ROPS)	218-220
Tractor Roll Over	219
Safety Rules	219
ROPS Label	219
Maintenance and Inspection	220
Operators Cab	221-234
Seat Belt Inspection & Maintenance	221
Preventive Maintenance	221-223
Air Filter Service	224-226
Operators Seat	227,228
Refrigerant Check	229,230
Compressor Belt Check & Adjustment	231
Compressor Belt Replacement	232
Dome Lamp	233
Console Lamp	234
CASE TECHNICAL MANUALS	235

SAFETY

Safety Rules

Understand that your safety and the safety of other persons is measured by how you service, and operate this machine. Know the positions and operations of all controls before you try to operate. **MAKE SURE YOU CHECK ALL CONTROLS IN A SAFE AREA BEFORE STARTING YOUR WORK.**

READ THIS MANUAL COMPLETELY and make sure you understand the controls. All equipment has a limit. Make sure you understand the speed, brakes, steering, stability, and load characteristics of this machine before you start to operate.

The safety information given in this manual does not replace safety codes, insurance needs, federal, state and local laws. Make sure your machine has the correct equipment needed by the local laws and regulations.

J I Case is continuing to work for your safety: by making tractors with better protection and by giving these rules for safe operation.



THIS SAFETY ALERT SYMBOL INDICATES IMPORTANT SAFETY MESSAGES IN THIS MANUAL. WHEN YOU SEE THIS SYMBOL, CAREFULLY READ THE MESSAGE THAT FOLLOWS AND BE ALERT TO THE POSSIBILITY OF PERSONAL INJURY OR DEATH.

Before Starting



WARNING: *Before starting engine study Operators Manual safety messages.*

Read all safety signs on machine.

Clear the area of other persons.


Learn and practice safe use of controls before operating.


It is your responsibility to understand and follow manufacturers instructions on machine operation, service, and to observe pertinent laws and regulations.


Operator and Service Manuals may be obtained from your equipment dealer.




WARNING: *Before starting the engine, be sure all operating controls are in neutral. This will ease starting loads on the starter and batteries and will eliminate the accidental start up of power driven equipment.*

WARNING: *To help prevent injury:*
BEFORE STARTING ENGINE - Put shields in place. Sit in the seat. Place controls in neutral.
BEFORE OPERATING MACHINE - Clear people away. No riders. Fasten seat belt.
 **WHEN OPERATING MACHINE** - Keep away from power driven parts. Avoid steep slopes, embankments, ditches and rough terrain. Reduce speed when turning. In high speed travel, couple brake pedals together where applicable. On road travel, use flashing warning lights where permitted and keep SMV emblem visible from rear.
WHEN MACHINE IS STOPPED - Engage park lock or brake. Lower raised equipment to ground. Stop engine before dismounting to service or clear machine(s).

 **CAUTION:** *Check the machine for leaks or any parts that are broken, not working correctly, or not there at all. Before you start the machine, tighten all caps, dipsticks, battery covers, etc.*

 **CAUTION:** *To help prevent personal injuries during operation and maintenance, use safety shoes, a hard hat, safety glasses or goggles and good fitting clothing.*

 **CAUTION:** *Provide a first aid kit for use in case of accident.*

 **CAUTION:** *It is good practice to carry a fire extinguisher on the machine. Be sure that the extinguisher is properly maintained and be familiar with its proper use.*

Operation



WARNING: *Operate controls only when seated in the Operators seat.*



WARNING: *Securely fasten your seat belt if the machine has a ROPS frame or cab. The seat belt can help insure your safety if it is used and maintained.*



CAUTION: *Never wear a seat belt loosely or with slack in the belt system. Never wear the belt in a twisted condition or pinched between the seat structural members.*



WARNING: *Operate the machine with the door closed to provide proper ROPS protection and to properly utilize the heating, ventilating or cooling systems.*



CAUTION: *To provide more secure hand and foot mobility, preventing slipping and possible injury, always face the machine when mounting and dismounting.*



WARNING: *Before leaving the machine, stop the engine, place all controls in neutral, and either set the parking brake or place range lever in PARK position as equipped.*



CAUTION: *Do not drive on roads, or at high speed anywhere, with the differential lock engaged. Difficult steering will occur, and can result in an accident. In field operation, use the differential lock for traction improvement, but release for turning at row ends.*



WARNING: *Travel speed should be such that complete control and machine stability is maintained at all times. Where possible, avoid operating near ditches, embankments and holes. Reduce speed when turning, crossing slopes, and on rough, slick, or muddy surfaces.*



WARNING: *Collision of high speed road traffic and slow moving machines can cause personal injury or death. On roads, use flasher/lights according to local laws. Keep SMV emblem visible.*



CAUTION: *Stop, look and listen before entering a highway, stay on your side of the road and pull over to let faster traffic pass. Slow down and signal as you turn off.*



CAUTION: *Brake pedals must be locked together for road travel. This will insure uniform brake application and maximum stopping ability.*



WARNING: *A frequent cause of personal injury or death is persons falling off and being run over. Do not permit others to ride. Only one person - the operator - should be on the machine when it is in operation.*

WARNING: *Engine can start with transmission in gear when neutral or safety start switch is by-passed:*

- 1. Do not connect across terminals on starter.*
- 2. Attach booster batteries according to safe method in Operators Manual. Then use recommended starting procedure from operators seat.*
- 3. When necessary, repair electrical system components promptly so that "jump starting" will not be attempted.*

Machine run-away can cause injury or death to operator and bystanders.



CAUTION: *Do not turn off the switch to stop the tractor with the transmission in gear when the engine is running. Power shift clutch friction could cause tractor movement on a smooth, level surface. If the ignition key is turned off for any reason, the engine should also be shutoff using the engine stop control.*



CAUTION: *With the engine running and the tractor in motion, if the ignition key switch is turned off and then back on, the tractor can move forward rapidly. The higher the throttle setting the more rapid the move forward will be. When the ignition key is turned off, electric solenoids close all valves to the hydraulic power shift clutches. When the key is turned back to on, oil will immediately flow to and close the clutches controlled by the power shift lever position and the tractor will move forward rapidly.*



WARNING: *Cab air filters remove dust in the air, but are not capable of removing chemicals used in spraying crops or in weed control. Many chemicals used for these purposes are toxic when improperly used, and can be hazardous to operators and others in the area. Follow the instructions of manufacturers of both the equipment and the chemicals regarding prohibitions against inhalation of dust or spray, personal hygiene practices, and other precautions noted by the manufacturers.*





CAUTION: *Make sure that the weight of a trailed vehicle that is not equipped with brakes, NEVER EXCEEDS the weight of the machine that is towing the vehicle. Stopping distance increases with increasing speed as the weight of the towed load increases, especially on hills and slopes.*



WARNING: *Extra weight and bad traction conditions such as mud or ice increase your stopping distance. Remember that liquid in the tires, weights on the machine or wheels, tanks filled with fertilizer, herbicides or insecticides - all these add weight and increase the distance you need in which to stop.*



WARNING: *Stay off slopes too steep for safe operation. Shift down before you start up or down a hill with a heavy load. Avoid "free wheeling".*



WARNING: *Contact with overhead power lines can cause severe electrical burns or death from electrocution. Make sure there is enough clearance between raised equipment and overhead power lines.*



CAUTION: *Try to balance the load primarily on the implement wheels - as in loading a trailer or spreader. Avoid overloading the drawbar. Add front end weights for improved stability. Engage the clutch smoothly, avoid jerking and use the brakes cautiously to avoid jack-knifing.*



WARNING: *Rear upset can result if pulling from wrong location on tractor. Hitch only to the drawbar. Use 3 point hitch only with the implements designed for its use - not as a drawbar.*



WARNING: *Be certain both latches are fully engaged across the implement lift pins before transporting or pulling the implement.*



WARNING: *Lower or block hydraulically or mechanically elevated implements and other attachments before servicing or when leaving the equipment.*



CAUTION: *When remote cylinders are connected to the hydraulic system, cycle the control lever about three times to remove air from the cylinder and hoses. With air in the system raised equipment can drop accidentally and cause personal injury or machine damage.*



CAUTION: *The implement should be lowered to the ground before uncoupling of the remote hydraulic hoses.*



CAUTION: *Installing an adapter on the PTO shaft, to convert the shaft diameter or to convert the number of splines on the shaft, moves the driveline connection rearward. This exposes the front universal joint and attaching mechanism. Adapters must not be installed unless the original master shield on the tractor is extended with equivalent shielding.*

The use of an adapter is not recommended.



WARNING: PTO driven machinery can cause serious injury. Before working on or near the PTO shaft, or servicing or clearing the driven machine, put the PTO lever in the DISENGAGE position and STOP the engine.



WARNING: Rotating machine parts, stay clear, keep shields installed to help protect from clothing entanglement and injury. Wear close-fitted clothing.



WARNING: Whenever a PTO driven machine is in operation, the PTO guard must be in place for most operations to prevent injury to the operator or bystanders. Where attachments, such as pumps, are installed on the PTO shaft (especially if the tractor PTO guard is moved upward or removed) extended shielding equivalent to the PTO guard must be installed with the attachment. Install the PTO guard to its original position immediately when the attachment is removed. When the PTO is not in use, the tubular guard must be installed over the end of the PTO shaft.



WARNING: When doing stationary PTO work and dismantling from the tractor with the PTO running, keep clear of all moving parts as they are a potential safety hazard.



WARNING: This tractor is equipped with a dual speed PTO-540 RPM and 1000 RPM. Be sure implements are matched for the proper drive speeds. Center and lock drawbar when using PTO.



WARNING: To prevent personal injury due to PTO driven machine shaft bottoming or separating, drawbar must be properly positioned in pivot bracket.

PTO Shaft	PTO Shaft End To Hitch Pin Hole
540 RPM 6 Spline	14.00 inch (356 mm)
1000 RPM 21 Spline	16.00 inch (407 mm)

Service



WARNING: *Never operate the engine in a closed building. Proper ventilation is required under all circumstances.*



WARNING: *Unless instructed otherwise never service or make adjustments to the machine with the engine running. Before making adjustments, put the shift control lever in Neutral and set the park brake OR put the shift control lever in park position as equipped.*



CAUTION: *Never refuel the machine when the engine is hot or running.*



CAUTION: *Never smoke while refueling the machine, servicing the fuel system, checking the batteries or using cold weather starting aids.*



CAUTION: *Never use gasoline, naphtha or any other volatile material for any cleaning purposes. These materials may be toxic and/or flammable.*



WARNING: *Check and service cooling system according to maintenance instructions.*

Hot coolant can spray out if radiator cap is removed. To remove radiator cap, let system cool, turn to first notch, then wait until all pressure is released. Scalding can result from fast removal of radiator cap.



CAUTION: *Never attempt to service the air conditioning system unless you are completely familiar with air conditioning and the safety precautions which must be followed when handling liquid refrigerant. Liquid refrigerant can cause severe and painful frostbite. Contact your Dealer who is experienced in servicing and handling of refrigerants.*



WARNING: *Hydraulic oil or diesel fuel leaking under pressure can penetrate the skin and cause infection or other injury.*

To Prevent Personal injury:

Relieve all pressure, before disconnecting lines.

Before applying pressure, make sure all connections are tight and components are in good condition.

Never use your hand to check for suspected leaks under pressure. Use a piece of cardboard or wood for this purpose.

If injured by leaking fluid, see your doctor immediately.



WARNING: *A tire can explode during inflation and cause serious injury or death. Never increase air pressure beyond 35 PSI to seat the bead on the rim. Replace a tire if it has a defect. Replace a wheel rim which has cracks, wear or severe rust. Make sure that all the air is removed from a tire before removing the tire from the rim. Never use force on an inflated or partially inflated tire. Make sure the tire is correctly seated before inflating.*



WARNING: *Do not remove, install or make repairs to a tire on a rim. Take the tire and rim to a tire shop where persons with special training and special safety tools are available. If the tire is not in correct position on the rim, or if too full of air, the tire bead can loosen on one side and cause air to leak at high speed and with large force. Because the air leak can thrust the tire in any direction, and with much force, you will be in danger of injury.*

Buy Now



Our support email:

ebooklibonline@outlook.com