

930CK Tractor

Operators Manual

9-964

Reprinted

CASE III



This symbol means ATTENTION! BECOME ALERT! YOUR SAFETY IS INVOLVED. The message that follows the symbol contains important information about your safety. Carefully read the message. Make sure you fully understand the causes of possible injury or death.

SB001

IF THIS MACHINE IS USED BY AN EMPLOYEE, IS LOANED, OR IS RENTED, MAKE SURE THAT THE OPERATOR UNDERSTANDS THE TWO INSTRUCTIONS BELOW.

BEFORE THE OPERATOR STARTS THE ENGINE:

1. GIVE INSTRUCTIONS TO THE OPERATOR ON SAFE AND CORRECT USE OF THE MACHINE.
2. MAKE SURE THE OPERATOR READS AND UNDERSTANDS THE OPERATOR'S MANUAL FOR THIS MACHINE.



IMPROPER OPERATION OF THIS MACHINE CAN CAUSE INJURY OR DEATH.

BEFORE STARTING THE ENGINE, DO THE FOLLOWING:

1. READ THE OPERATOR'S MANUAL.
2. READ ALL SAFETY DECALS ON THE MACHINE.
3. CLEAR THE AREA OF OTHER PERSONS.

LEARN AND PRACTICE SAFE USE OF MACHINE CONTROLS IN A SAFE, CLEAR AREA BEFORE YOU OPERATE THIS MACHINE ON A JOB SITE.

It is your responsibility to observe pertinent laws and regulations and to follow manufacturer's instructions on machine operation and maintenance.

See your Authorized Case dealer for additional operator's manuals, parts catalogs, and service manuals.

TO THE PURCHASER OF A CASE TRACTOR

The care you give your new Case Tractor will greatly determine the satisfaction and service life you will obtain from it. Use this manual as your guide. By observing the instructions and suggestions in this manual, your Case Tractor will serve you well for many years.

As an Authorized Case Dealer, we stock Genuine Case Parts, which are manufactured with the same precision and skill as the original equipment. Our factory trained staff is kept well informed on the best methods of servicing Case equipment and is ready and able to help you.

Should you require additional aid or information, contact us.

YOUR AUTHORIZED CASE DEALER

To insure efficient and prompt service, please furnish us with the Model, Serial and Engine Numbers of your Tractor in all correspondence or contacts.

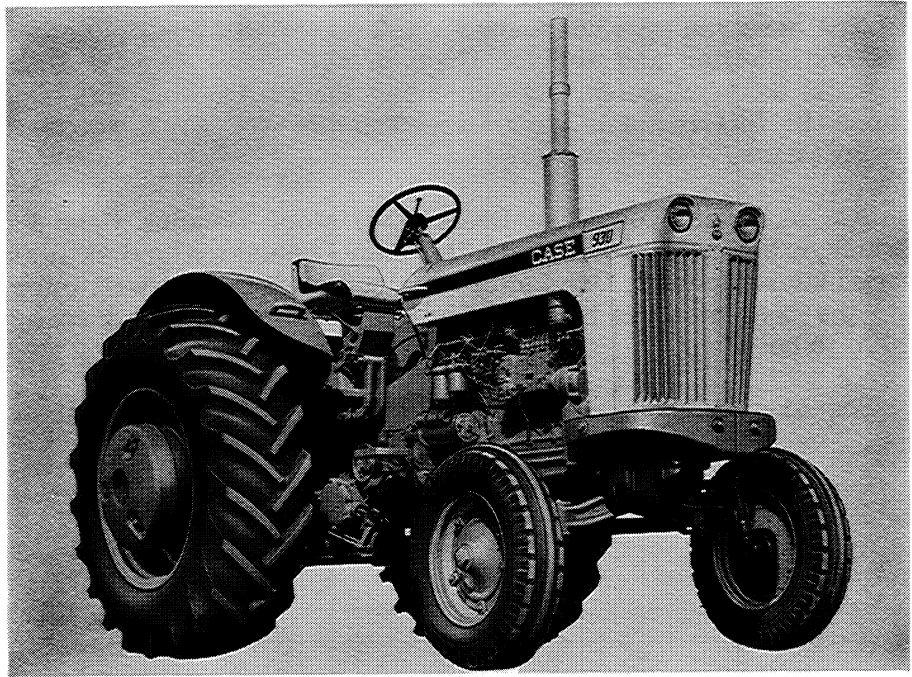


Figure 1. Right Side View of Case 930 Diesel Tractor

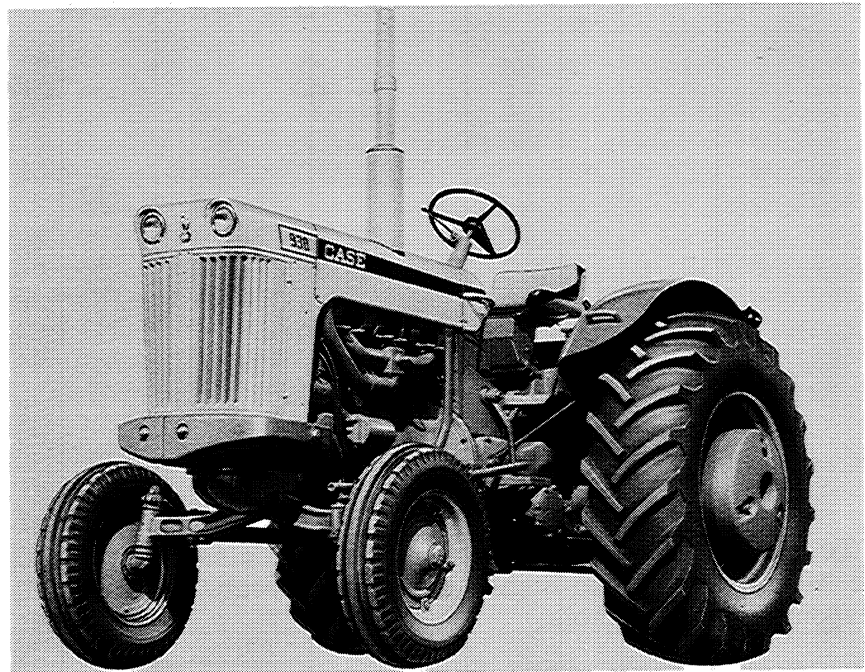


Figure 2. Left Side View of Case 930 Diesel Tractor

INTRODUCTION

The Case Model 930 Diesel Tractor is powered by a rugged six cylinder full diesel engine that is noted for its quiet operating characteristics and economy of operation.

The transmission, 6 speeds forward and 1 reverse, provides a full range of working speeds to handle all implements and tools in any type or condition of soil. The high speed (6th) road gear brings your fields closer to the farm yard in terms of non productive time on the road.

Advanced engineering includes the CASE POWRCEL combustion system which produces all of the available power out of each charge of injected fuel. To protect the closely fitted precision parts, the finest filters available have been provided to clean the fuel, the intake air and the crankcase oil.

The four basic rules of Diesel Engine operation, which are the deciding factors in determining the service life and economy of operation that you will receive from your tractor, are as follows:

1. Clean Fuel

- (a) Use only Number 2 Diesel Fuel that meets the specifications listed in this manual.
- (b) Follow the instructions regarding the recommended precautions when handling and storing fuel.

2. Air Cleaner

Service the air cleaner regularly.

3. Crankcase Oil

Diesel Engines require the use of a heavy duty engine oil. Select oil that meets the proper service designations recommended in the lubrication section of this manual.

4. Periodic Checkups

Your Authorized Case Dealer has the service knowledge necessary to keep your tractor in top running condition. Arrange to have him check your tractor at regular intervals.

SERIAL NUMBER

When ordering parts from your Authorized Case Dealer and in all contacts or correspondence with your dealer relative to the Tractor, always specify the Serial, Model and Engine Numbers of your Tractor.

The Model and Serial Numbers are stamped on the number plate located on the right hand side of the instrument panel. See Figure 3. The Engine Number is stamped on a plate fastened to the right hand side of the engine on the fuel pump mounting flange, Figure 4.

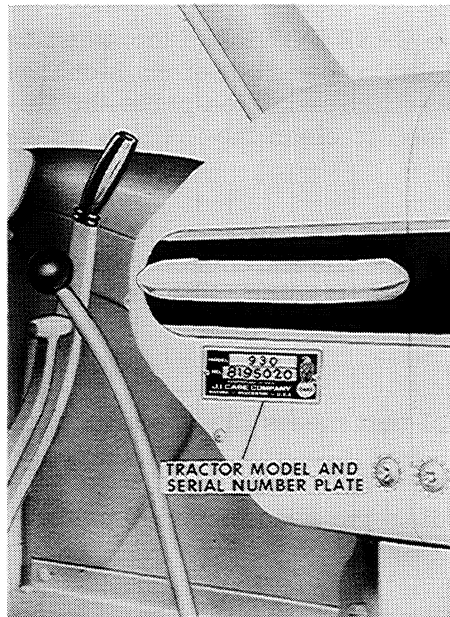


Figure 3

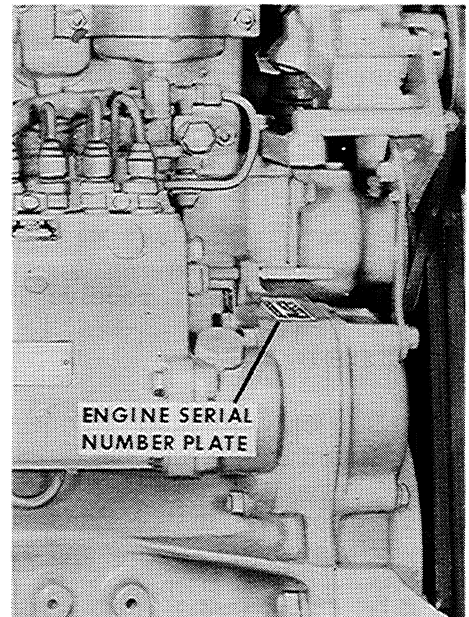


Figure 4

NOTE: The terms "Right Hand" and "Left Hand" whenever used in this manual apply to the tractor when facing in the direction the tractor will move in forward operation.

For reference, fill in the Serial Number, Model Number and Engine Number of your 930 Series Diesel Tractor in the spaces provided below.

Model Number _____

Engine Number _____

Serial Number _____

general specifications

ENGINE

General

Type ----- 6 Cylinder, 4 Stroke Cycle
Valve-In- Head Diesel Engine.
Firing Order ----- 1-5-3-6-2-4
Bore ----- 4-1/8 Inches
Stroke ----- 5 Inches
Piston Displacement ----- 401 Cubic Inches
Compression Ratio ----- **15 to 1**
Cylinder Sleeves ----- Removable, Wet Type
No Load Governed Engine Speed ----- 1750 RPM
Full Load Governed Engine Speed ----- 1600 RPM
Engine Idling Speed ----- 600 RPM
Valve Tappet Clearance (Intake) ----- .012 Inch (Cold)
(Exhaust) ----- .020 Inch (Cold)
Cold Weather Starting Aid ----- Electric Manifold
Heater.
Diesel Fuel Recommendation ----- Number 2 Diesel Fuel

Piston Rings

Rings Per Piston ----- 4
Number of Compression Rings ----- 3
Number of Oil Rings ----- 1

Piston Pins

Type Pins ----- Full Floating Type

Connecting Rods

Type Bearings ----- Replaceable Precision
Steel Back, Copper-Lead
Alloy Liners.

Main Bearings

Number of Bearings ----- 7
Type of Bearings ----- Replaceable Precision,
Steel Back, Copper-Lead
Alloy Liners.

Engine Lubricating System

Oil Pressure ----- 40 to 45 Pounds with Engine Warm
and Operating at Full Governed RPM.
Type System ----- Forced Circulation
Oil Pump ----- Gear Type, Floating Oil Screen Inlet
Oil Filter ----- Full Flow With Replaceable Element

FUEL SYSTEM

Fuel Injection System

Fuel Injection Pump ----- Robert Bosch, Type PES
(Multiple Plunger).
Pump Timing ----- 30 Degrees Before Top Dead
Center (Port Closing).
Fuel Injectors ----- Robert Bosch, Throttling Pin-
tle Type (Opening Pressure
1950 to 2050 PSI).
Fuel Transfer Pump ----- Plunger Type, Integral Part
of Injection Pump.
Governor ----- Variable Speed, Fly-Weight
Centrifugal Type; Integral Part
of Injection Pump.

Fuel Filters

1st Stage Fuel Filter ----- Replaceable Element Type
2nd Stage Fuel Filter ----- Replaceable Element Type
Final (3rd Stage) Fuel Filter --- Replaceable "Sealed Type" Filter
Fuel Tank Water Trap and Drain ----- Located in Base of Fuel
Tank.

Fuel Gauges

Fuel Tank Level Gauge ----- Located on Instrument Pan-
el.
Fuel Pressure Warning Light -- Located on Instrument Panel.
Indicates Condition of Fuel Filters.

COOLING SYSTEM

Type of System ----- Pressurized, Thermostat Controlled By-Pass Type; Forced Circulation (Impeller Type Pump).
Radiator ----- Heavy Duty Fin and Tube Type
Thermostat ----- Starts To Open At Approximately 180° F: Fully Open at 195° F.
Radiator Shutters ----- Available as Extra Equipment
Pressure Cap Required ----- 4 PSI

ELECTRICAL SYSTEM

Type of System ----- 12 Volt, Negative Ground
Batteries ----- Two 6 Volt Batteries Connected in Series (Group 7D, 29 Plates, 204 Ampere Hours at 20 Hour Rate).
Generator ----- 12 Volt Shunt Type
Voltage Regulator ----- Automatic Type, Mounted on Generator.
Starting Motor ----- 12 Volt; Drive Assembly Sealed from Dust in Clutch Housing.
Headlights ----- 12 Volt Sealed Unit No. 4411
Rear Lights ----- 12 Volt Sealed Unit No. 4409
12 Volt Single Contact No. 1003
Rear Warning Light (Red) ----- 12 Volt Single Contact No. 1141
Combination Red Tail Light for Safe Night Road Travel and White Flood Light for Night Work.
Instrument Panel (3) ----- 12 Volt Single Contact No. 1445
Indicator Warning Lights (3) ----- 12 Volt Single Contact No. 57 Red Fuse ----- 20 Ampere Fuse (Located on Instrument Panel).
Circuit Breaker (Located on Rear Hood Mounting Plate) ----- Protects the Electrical System from Overloading.
Electrical Outlet Socket ----- 12 Volt; For Auxiliary Tail Light on Implements or Trailers and for Plugging in a 12 Volt Battery Charger, etc.
12 Volt Red Warning Lamp ----- For Use with Electrical Outlet Socket and Pull Behind Equipment.

TRACTION CLUTCH

Type Clutch ----- Hand Operated Oil Cushion Type Clutch; Clutch Bearings Automatically Lubricated By Engine Pressure Lubricating System.

TRANSMISSION

Transmission Case ----- Heavy Cast Iron One Piece Unit
Construction Containing All Gears,
Shafts, Bearings, Differential and
Final Drive.
Transmission ----- 6 Speeds Forward and one Reverse
Final Drive ----- Heavy Duty Roller Chain Drive
Transmission Brake ----- Actuated By Clutch Lever

DRAWBAR

Type ----- Full Swinging Roller Mounted, Self-Locking
Drawbar Pin Hole Size ----- With Accommodate 1-1/4 Inch Pin
Raised Hitch ----- Provided With All PTO Equipped Tractors
Yoke Type Drawbar ----- For Hitch That Requires a Yoke Type
Drawbar.

BRAKES

Type ----- Heavy Duty, Double Disc, Self Energizing
(either forward or reverse) Differential Brakes.
Brake Pedals ----- Can be Locked Together for Road Travel;
Can Be Used Individually For Steering Assistance.

BELT PULLEY

Method of Engaging ----- Independent Hand Shift
Pulley Diameter ----- 11-3/4 Inches
Pulley Face Width ----- 8-1/4 Inches
Pulley Speed at No Load Governed
Engine Speed of 1750 RPM ----- 1102 RPM
Pulley Speed at Full Load
Governed Engine Speed of 1600 RPM ----- 1007 RPM
Pulley Speed at 600 RPM Engine
Idling Speed ----- 378 RPM
Belt Speed ----- 3100 Feet Per Minute Under Load
Ratio Engine Speed to Belt Pulley Speed ----- 1.588 to 1

POWER TAKE - OFF

Rotation ----- Clockwise
PTO Shaft Speed at 1450 Engine RPM (1000 RPM Attach) - 1000 RPM
PTO Shaft Speed at 1450 Engine RPM (540 RPM Attach) -- 540 RPM
PTO Shaft Speed at 600 RPM Idle Speed ----- 220 RPM
Spline Size For 540 RPM PTO Attach (6 Spline) --- 1-3/8 Inch Dia.
Spline Size For 1000 RPM PTO Attach (21 Spline) --- 1-3/8 Inch Dia.

Location on Tractor ----- 3/4 Inch to Left of Tractor Center Line.
 Distance from Center of PTO (Shaft to top of Drawbar (Raised Hitch) ----- 16-1/2 Inches
 Method of Engaging ----- PTO Clutch Hand Lever
 Type of PTO Clutch ----- Oil Bath Multiple Disc, Over Center Adjustable Type.
 Fluid Recommendation ----- Automatic Transmission Fluid-Type A or Case Hi Lo-TCH.

HYDRAULIC SYSTEM

Pump ----- Large Volume. Spur Gear, Continuous Running, Dual Valve.
 Type Valve Control ----- Hand Lever Operated
 Coupling for Portable Cylinder ----- Case Quick Detachable Breakaway Type.
 Oil Filter ----- Edge Wound Paper Element; Removable for Cleaning.
 Fluid Recommendation ----- Automatic Transmission Fluid - Type A, or Case Hi Lo-TCH.
 Type System ----- Couplings Provided for 2 Portable Hydraulic Cylinders (Both Double Acting).
 Relief Valve Opening Pressure -- 1200 PSI at 1500 RPM Engine Speed.

APPROXIMATE CAPACITIES

		U. S.	IMPERIAL
Cooling System	(Gallons)	10	8
Fuel Tank	(Gallons)	50	41
Engine Crankcase (including Oil Filter)	(Quarts)	14	12
Air Cleaner Oil Cup	(Pints)	4-1/4	3-1/2
Transmission and Differential	(Gallons)	16	13
Hydraulic Control Housing	(Quarts)	14	12
Power Steering System (Approx.)	(Quarts)	2	1-1/2
Power Steering Reservoir Only	(Pints)	1-1/2	1-1/8

NOTE: Always add additional Automatic Transmssion Fluid (Type A) or Case Hi Lo-TCH to the hydraulic housing for each empty Case portable cylinder connected to the system.

TIRE AND WHEEL EQUIPMENT

Rear Wheels

Tire Size ----- 16.9-34 6 ply Open Center Tread
Rim Size ----- DW 14-34 Wide Base Rim
Tire Size ----- 18.4-34 6 ply Open Center Tread
Rim Size ----- Either DW 14-34 or DW 16-34 Wide
Base Rim.
Tire Size ----- 18.4-34 6 ply Cane and Rice Tread
Rim Size ----- DW 16-34 Wide Base Rim
Tire Size ----- 23.1-26 8 ply Open Center Tread
23.1-26 8 ply (Cane and Rice Type) Closed
Center Treads.
Rim Size ----- DW 20-26 Rim - provides
Tractor rear wheel tread of 74-
9/16 Inches (for both Open and
Closed Center Treads).

NOTE

The 16.9-34 and 18.4-34 Tires use the A11343 Rear Wheel.

The 23.1-26 Tires use the A11348 Rear Wheel.

Wheel Weights (Extra Equipment) -- 150 Pounds Each for 16.9-34
or 18.4-34 Tires Only. 690 Pounds
Each for 16.9-34 or 18.4-34 Tires
Only. 610 Pounds Each for 23.1-
26 Tires Only.

Front Wheels

Tire Size ----- 7.50-18 4 ply Tractor Tire
Rim Size ----- 5.50 F-18 Full Drop Center Rim

TIRE PRESSURES

Rear Wheel Tire Pressures ----- 16 Pounds Minimum Pressure
Front Wheel Tire Pressure ----- 28 Pounds

Keep the tires inflated to the recommended pressures. Check the pressures at least every 60 hours of operation or once a week, whichever occurs first. Do not reduce the rear tire pressure to increase traction.

When plowing, increase the furrow wheel tire pressure 4 pounds.

OVERALL MEASUREMENTS

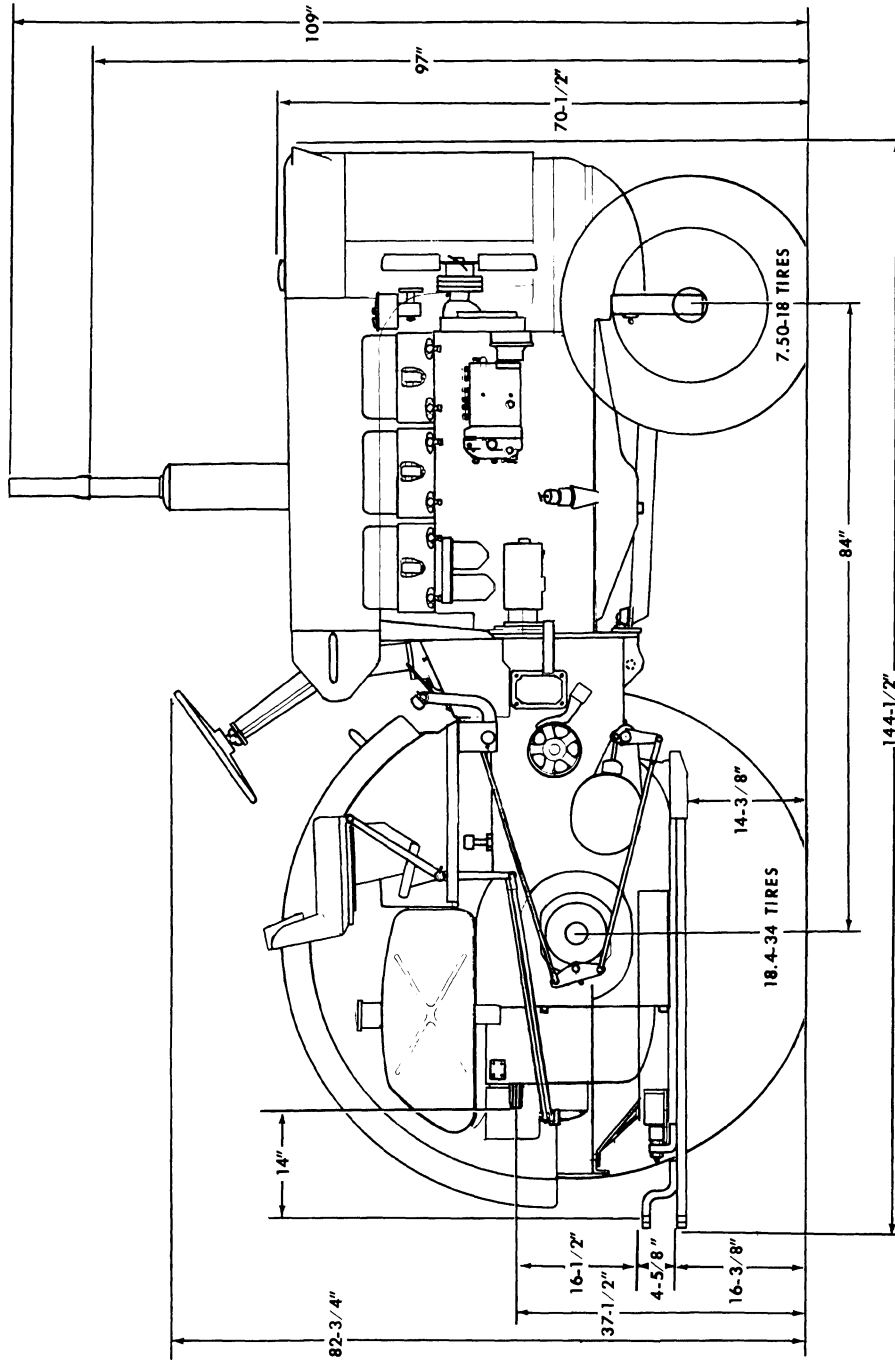


Figure 5

OVERALL MEASUREMENTS (continued)

Front Wheel Tread ----- 57 Inches
 Rear Wheel Tread (16.9-34 Tires) ----- 67-1/2 Inches
 Overall Width (To Outside Edge of
 Rear Tires 16.9-34 Inch Tread) ----- 84 Inches
 Front Wheel Toe-In ----- 1/4 to 3/8 Inches
 Approximate Shipping Weight (18.4-34 Rear Tires) --- 8200 Lbs.

Dimensions Between Tires

The dimensions between the tires on the tractor are measured from inside wall to inside wall of the tire at axle height.

Rear Tire Size	Rim Size	Dimensions Between Tires
23.1-26	D-W 20-26	49-5/16 Inches
18.4-34	D-W 14-34	
	or 16-34	48-3/4 Inches
16.9-34	D-W 14-34	51 Inches
Front Tire Size	Rim Size	Dimensions Between Tires
7.50-18	5.50-F18	49 Inches

TRAVEL SPEEDS

Rear Tire Size	Gear Selection						
	1st.	2nd.	3rd.	4th.	5th.	6th.	Reverse
16.9-34	2.5	3.9	4.8	5.9	7.2	14.1	3.3
18.4-34	2.7	4.1	5.1	6.2	7.6	14.8	3.4
18.4-34 Rice	2.8	4.2	5.2	6.4	7.8	15.2	3.5
23.1-26	2.5	3.7	4.7	5.7	7.0	13.6	3.1
23.1-26 Rice	2.7	4.0	5.0	6.2	7.5	14.7	3.4
54" Steel	2.5	3.7	4.7	5.7	7.0	13.6	3.1

NOTE: Listed above are the approximate Travel Speeds obtained under full load conditions. Normal transport speeds are approximately 15% higher than those listed above.

Thank you so much for reading.
Please click the “Buy Now!”
button below to download the
complete manual.



After you pay.

You can download the most
perfect and complete manual in
the world immediately.

Our support email:

ebooklibonline@outlook.com