

Page Title	Page Number
DIVIDER RIGHT	2
DIVIDER LEFT	9
MOUNTING AND REMOVAL OF DIVIDERS - SPAIN	11A
PICK-UP	13
REEL LIFT FRAME AND PULLEY	14
REEL DRIVE VARIABLE SPEED PULLEYS AND TABLE AUGER SLIP CLUTCH	21
TABLE	25
GUARD-LOWER PARTS	29
TABLE WITH AUTOMATIC HEIGHT CONTROL	30
KNIFE AND DRIVE ARRANGEMENT	34
TABLE AUGER	38
TABLE ELEVATOR HOUSING	42
ELEVATOR TO CYLINDER	45
ELEVATOR TO CYLINDER - TOP SHAFT	46
TABLE THROUGH OUT CLUTCH	49
CYLINDER HOUSING	50
CYLINDER	54
CYLINDER DRIVE GEARBOX	57
COUNTER SHAFT AND CLUTCH	61
CYLINDER DRIVE	65
CONCAVE FIXED RODS AND DRUM DEFLECTOR	66
CONCAVE ASSEMBLY REMOVABLE RODS	70
CONCAVE CONTROL	73
GRAIN PAN	74
RETURN ELEVATOR	78
SHAKER SHOE	82
CLEANING FAN	86
STRAW WALKERS AND GRAIN PANS	90
REAR HOOD	94
AUGERS, GRAIN AND RETURN	97
GRAIN ELEVATOR	101
GRAIN TANK	105
UNLOADER DRIVE AND CONTROLS	109
UNLOADER AUGERS	110
COOLING AIR INTAKE	114
RADIATOR AND FAN	118
MANIFOLDS AND AIR FILTER	121
AIR FILTER AND PRE-FILTER (ITALY)	121A
ENGINE POWER OUTPUT SHAFT - DIESEL	122
FUEL TANK AND TUBES	125
WIRING ALARM - FUEL PUMP AND GAUGE	129
ELECTRIC WIRING AND BATTERY	130
LIGHTING EQUIPMENT	133
LIGHTING EQUIPMENT - EXPORT	139F
VARIABLE SPEED PULLEYS	141
TRACTION CLUTCH	142
GEAR SHIFT LEVERS	146
GEAR BOX AND DIFFERENTIAL	150
FINAL DRIVE	154
BRAKES	157
BRAKE FLUID CONTAINER	158
BRACE CYLINDER	161
BRAKE PEDALS	162
FRAME FRONT AXLE AND WHEEL	166
LUBRICATING ASSY FOR MAIN COUNTER SHAFT	170
OPERATORS PLATFORM	173
SEAT	177
CONTROL BOX	178
CONTROL BOX FOR AUTOMATIC TABLE HEIGHT CONTROL	182
INSTRUMENT PANEL	186
STEERING GEAR	189
STEERING GEAR	193
REAR AXLE AND WHEELS	194
HYDRAULIC PUMP	198
HYDRAULIC PUMP	201
VALVE HYDRAULIC CONTROL	202

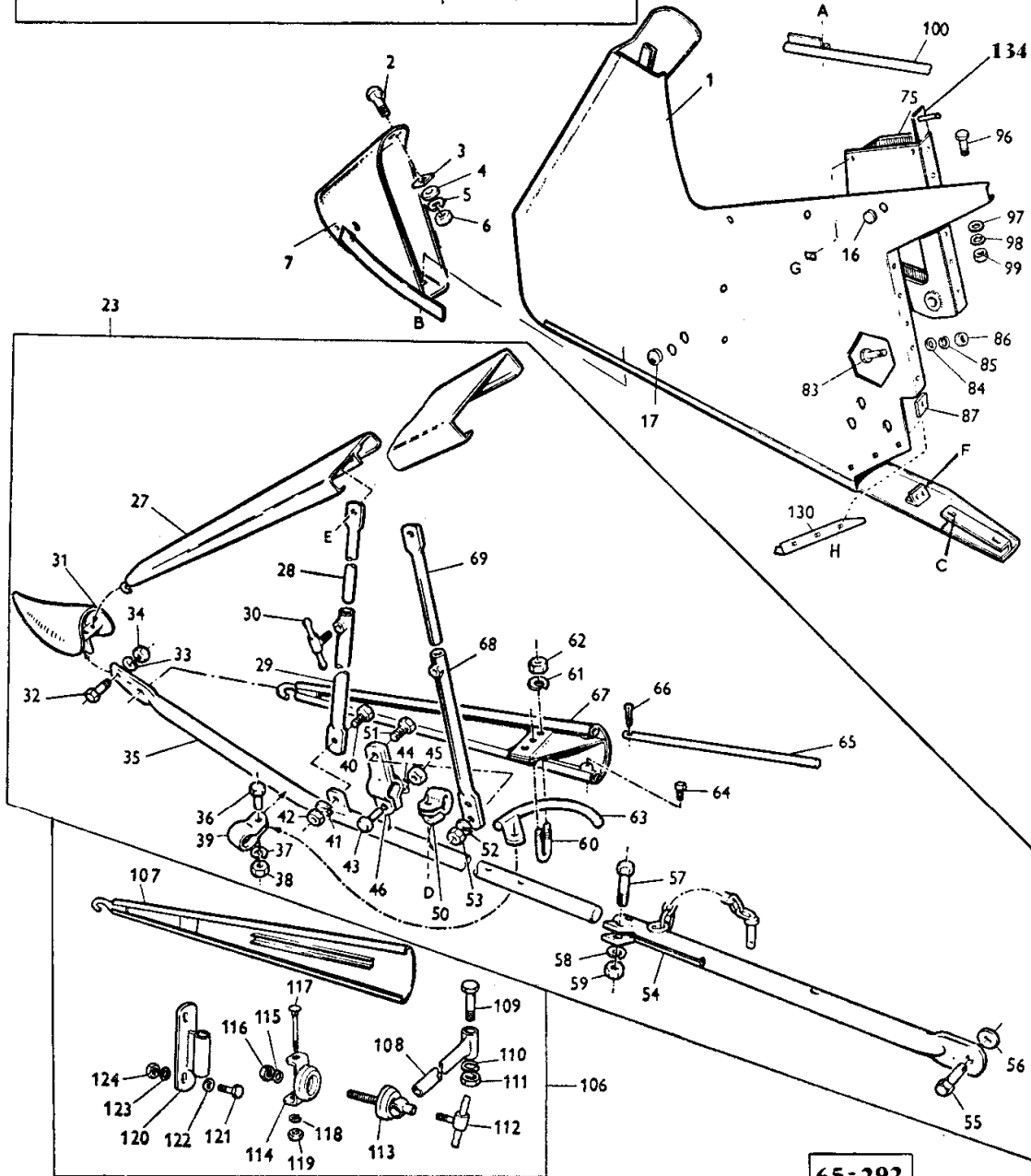
TABLE OF CONTENT

HYDRAULIC OIL TANK AND VALVE	206
HYDRAULIC EQUIPMENT	209
HYDRAULIC EQUIPMENT	213
HYDRAULIC VALVE - CYLINDER - UNLOADER SPOUT	214
DIVERTER VALVE	217
REEL LIFT ARRANGEMENT	218
REEL LIFTING CYLINDER	221
DEVIATION TO REEL-VARIATOR	222
TABLE LIFT	225
RAMS	226
BELTS	229
CONVEYORS	230
CHAINS	233
STRAW SPREADER	237
DEFLECTOR PANEL	241
LABELS	242
INSTRUCTION PLATES AND TRANSFERS	245
MISCELLANEOUS TOOLS	246B
VARIATOR MOVING BACK TO ZERO	246C
TABLES - QUICK ATTACH	248
TABLE AUGER SHAFT DRIVE - QUICK ATTACH	255
TABLE WITH AUTOMATIC HEIGHT CONTROL - QUICK ATTACH	256
HYDRAULIC ON TABLE - QUICK ATTACH	259
PICK UP REEL - QUICK ATTACH	264
REEL ARM - QUICK ATTACH	268
REAR SHAFT - VARIATOR - QUICK ATTACH	271
ELEVATOR TO CYLINDER - QUICK ATTACH	275
TABLE ELEVATOR HOUSING - QUICK ATTACH	276
ANTIWIND KIT - QUICK ATTACH	280
DIVIDERS - QUICK ATTACH	283
KNIFE AND DRIVE ARRANGEMENT - QUICK ATTACH	287
DRIVE ARRANGEMENT - QUICK ATTACH	288
TABLE AUGER - QUICK ATTACH	291
GUARD ASSEMBLIES TABLE - QUICK ATTACH	295
GUARD REAR SHAFT - QUICK ATTACH	296
HYDRAULIC TO TABLE - QUICK ATTACH	299
HYDRAULIC - TABLE, VARIATOR, STEERING - QUICK ATTACH	303
HYDRAULIC - SPOUT UNLOADER - QUICK ATTACH	308
HYDRAULIC - POWER STEERING - QUICK ATTACH	312
FOUR SPOOL UNI - BODY VALVE - QUICK ATTACH	315
RAMS - TABLE LIFT - QUICK ATTACH	316

2

**DIVISEUR DROIT
DIVIDER R.H.**

A	B	C	D	E	F	G	H
95	15	82	49	26	78	91	133
94	14	81	48	25	77	90	132
93	13	80	47	24	76	89	131
92	12	79				88	



65-292

Imprimé en France
Printed in France

MOISSONNEUSE-BATTEUSE 510-8
510-8 COMBINE

957 292 M2 - Emission 1 - II/67
957 292 M2 - Issue 1 - II/67

DIVIDER RIGHT

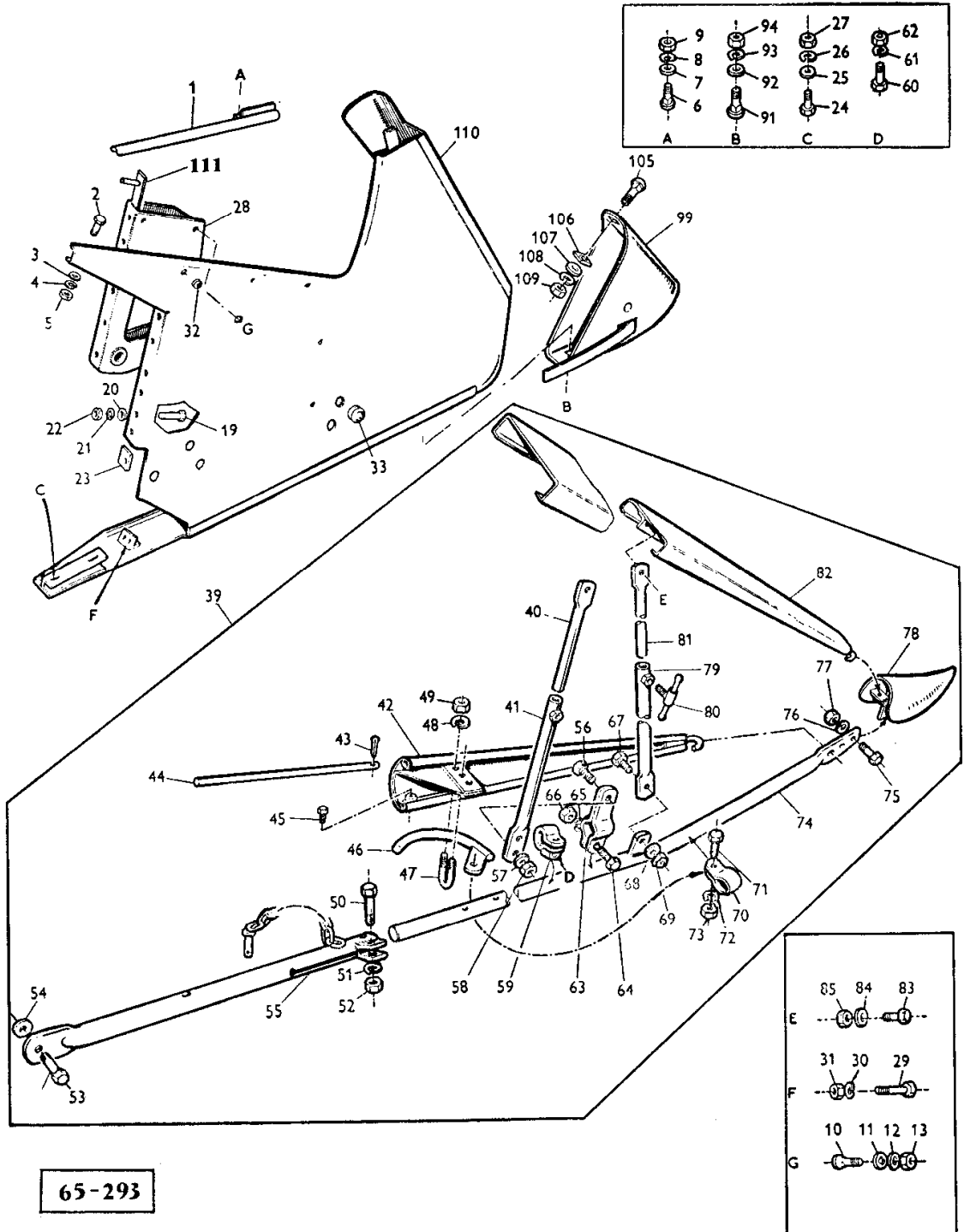
Item	Part Number	Qty	Description	Comments
1	910052M91	1	Divider	Right Hand
2	353792X1	1	Bolt Unf	
3	GH1135	1	Washer	
UP TO STOCK END				
3	376818X1	1	Washer	
4	353755X1	1	Washer	
5	353446X1	1	Lock Washer	
6	353916X1	1	Nut Unf	
7	791441M91	1	Shoe	
12	353792X1	1	Bolt Unf	
13	353755X1	1	Washer	
14	353446X1	1	Lock Washer	
15	353916X1	1	Nut Unf	
16	793491M1	5	Grommet	(A)
17	793115M1	2	Plug	(A)
23		1	Extension	INCL. REF. 24 TO 69
24	353559X1	2	Screw Unf	
25	353432X1	2	Lock Washer	
26	353426X1	2	Nut Unf	
27	404473M91	2	Cone	
28	790697M1	1	Tube	
29	790696M91	1	Tube	
30	790701M91	2	Setscrew	
31	404468M91	1	Shoe	
32	353520X1	2	Bolt Unf	
33	353446X1	2	Lock Washer	
34	353916X1	2	Nut Unf	
35	790693M91	1	Tubing	
36	353561X1	1	Screw Unf	
37	353432X1	1	Lock Washer	
38	353426X1	1	Nut Unf	
39	790710M1	1	Clamp	
40	353563X1	1	Bolt Unf	
41	353432X1	1	Lock Washer	
42	353426X1	1	Nut Unf	
43	353562X1	1	Screw Unf	
44	353432X1	1	Lock Washer	
45	353426X1	1	Nut Unf	
46	790709M91	1	Clamp	
47	353562X1	1	Screw Unf	
48	353432X1	1	Lock Washer	
49	353426X1	1	Nut Unf	
50	790695M91	1	Clamp	
51	353562X1	1	Screw Unf	
52	353432X1	1	Lock Washer	
53	353426X1	1	Nut Unf	
54	790692M91	1	Tube	
55	790694M1	1	Bolt	
56	791433M2	1	Washer	
57	353567X1	1	Bolt Unf	
58	353432X1	1	Lock Washer	
59	353426X1	1	Nut Unf	
60	790712M1	1	U Bolt	
61	353431X1	2	Nut Unf	
62	353434X1	2	Lock Washer	
63	790711M91	1	Arm	
64	353515X1	2	Screw Unf	
65	790708M1	2	Rod	
66	354048X1	3	Pin	
67	790691M91	1	Segment	
68	790698M91	1	Tube	
69	790699M1	1	Tube	
75	793094M92	1	Bearer	
76	353522X1	1	Bolt Unf	
77	353446X1	1	Lock Washer	
78	353916X1	1	Nut Unf	
79	353519X1	2	Screw Unf	
80	353755X1	2	Washer	
81	353446X1	2	Lock Washer	
82	353916X1	2	Nut Unf	

DIVIDER RIGHT

Item	Part Number	Qty	Description	Comments
83	353519X1	1	Screw Unf	
84	353755X1	1	Washer	
85	353446X1	6	Lock Washer	
86	353916X1	6	Nut Unf	
87	790689M1	1	Spacer	
88	353825X1	2	Bolt Unf	
89	793757M1	2	Washer	
90	353432X1	2	Lock Washer	
91	353428X1	2	Nut Unf	
92	353793X1	2	Bolt Unf	
93	353755X1	2	Washer	
94	353446X1	2	Lock Washer	
95	353916X1	2	Nut Unf	
96	353516X1	3	Screw Unf	
97	353755X1	3	Washer	
98	353446X1	3	Lock Washer	
99	353916X1	3	Nut Unf	
100	404461M91	1	Tube	
107	404631M91	1	Cone	
108	404642M91	1	Tube	(B)
109	353546X1	1	Screw	(B)
110	353434X1	1	Lock Washer	(B)
111	353431X1	1	Nut Unf	(B)
112	790701M91	1	Setscrew	(B)
113	791516M91	1	Disc	(B)
114	791517M91	1	Plate	(B)
115	353434X1	1	Lock Washer	(B)
116	353431X1	1	Nut Unf	(B)
117	353823X1	1	Bolt	(B)
118	353434X1	1	Lock Washer	(B)
119	353431X1	1	Nut Unf	(B)
120	791520M91	1	Plate	(B)
121	353519X1	2	Screw Unf	(B)
122	353755X1	2	Washer	(B)
123	353446X1	2	Lock Washer	
124	353916X1	2	Nut Unf	
130	793907M1	1	Shield	
131	359998X1	3	Bolt Unf	
132	353446X1	3	Lock Washer	
133	353916X1	3	Nut Unf	
134	794929M91	1	Bracket	

(A)
WHEN LIGHTING EQUIPMENT IS NOT FITTED
(B)
WHEN DIVIDER EXTENSION IS NOT FITTED

**DIVISEUR GAUCHE
DIVIDED L.H.**



65-293

Imprimé en France
Printed in France

MOISSONNEUSE-BATTEUSE 510-8
510-8 COMBINE

957 292 M2 - Emission 1 - 11/67
957 292 M2 - Issue 1 - 11/67

DIVIDER LEFT

Item	Part Number	Qty	Description	Comments
1	404562M91	1	Tube	
2	353516X1	3	Screw Unf	
3	353755X1	3	Washer	
4	353446X1	3	Lock Washer	
5	353916X1	3	Nut Unf	
6	353793X1	2	Bolt Unf	
7	353755X1	2	Washer	
8	353446X1	2	Lock Washer	
9	353916X1	2	Nut Unf	
10	353825X1	2	Bolt Unf	
11	793757M1	2	Washer	
12	353432X1	2	Lock Washer	
13	353428X1	2	Nut Unf	
19	353519X1	1	Screw Unf	
20	353755X1	1	Washer	
21	353446X1	6	Lock Washer	
22	353916X1	6	Nut Unf	
23	790689M1	1	Spacer	
24	353519X1	2	Screw Unf	
25	353755X1	2	Washer	
26	353446X1	2	Lock Washer	
27	353916X1	2	Nut Unf	
28	793096M92	1	Bearer	
29	353522X1	2	Bolt Unf	
30	353446X1	2	Lock Washer	
31	353916X1	2	Nut Unf	
32	793491M1	5	Grommet	(A)
33	793115M1	2	Plug	(A)
39		1	Divider	INCL. REF. NO. 40 TO 85
40	790699M1	1	Tube	
41	790698M91	1	Tube	
42	790733M91	1	Cone	
43	354048X1	3	Pin	
44	790708M1	1	Rod	
45	353515X1	2	Screw Unf	
46	790711M91	1	Arm	
47	790712M1	1	U Bolt	
48	353434X1	2	Lock Washer	
49	353431X1	2	Nut Unf	
50	353567X1	1	Bolt Unf	
51	353432X1	1	Lock Washer	
52	353426X1	1	Nut Unf	
53	790694M1	1	Bolt	
54	791433M2	1	Washer	
55	790692M91	1	Tube	
56	353563X1	1	Bolt Unf	
57	353432X1	1	Lock Washer	
58	353426X1	1	Nut Unf	
59	790732M91	1	Clamp	
60	353562X1	1	Screw Unf	
61	353432X1	1	Lock Washer	
62	353426X1	1	Nut Unf	
63	790709M91	1	Clamp	
64	353562X1	1	Screw Unf	
65	353432X1	1	Lock Washer	
66	353426X1	1	Nut Unf	
67	353561X1	1	Screw Unf	
68	353432X1	1	Lock Washer	
69	353426X1	1	Nut Unf	
70	790710M1	1	Clamp	
71	353561X1	1	Screw Unf	
72	353432X1	1	Lock Washer	
73	353426X1	1	Nut Unf	
74	790731M91	1	Tube	
75	353520X1	1	Bolt Unf	
76	353446X1	2	Lock Washer	
77	353916X1	2	Nut Unf	
78	404468M91	1	Shoe	
79	790696M91	1	Tube	

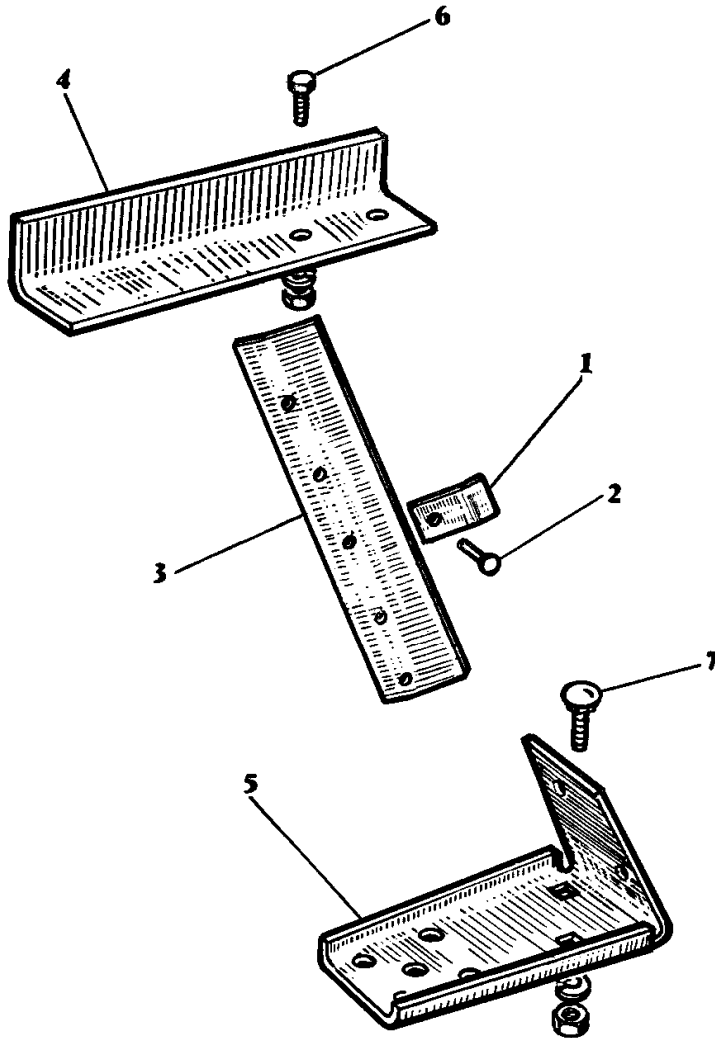
DIVIDER LEFT

Item	Part Number	Qty	Description	Comments
80	790701M91	2	Setscrew	
81	790697M1	1	Tube	
82	404473M91	2	Cone	
83	353559X1	2	Screw Unf	
84	353432X1	2	Lock Washer	
85	353426X1	1	Nut Unf	
91	353792X1	1	Bolt Unf	
92	353755X1	1	Washer	
93	353446X1	1	Lock Washer	
94	353916X1	1	Nut Unf	
99	791440M91	1	Shoe	
105	353792X1	1	Bolt Unf	
106	GH1135	1	Washer	
106	376818X1	1	Washer	UP TO STOCK END
107	353755X1	1	Washer	
108	353446X1	1	Lock Washer	
109	353916X1	1	Nut Unf	
110	910050M91	1	Divider	
111	794929M91	1	Plate	

(A)
WHEN LIGHTING EQUIPMENT IS NOT FITTED

11 A

MONTAGE ET DEMONTAGE DES DIVISEURS - ESPAGNE
MOUNTING AND REMOVAL OF DIVIDERS - SPAIN



67-16

Imprimé en France
Printed in France

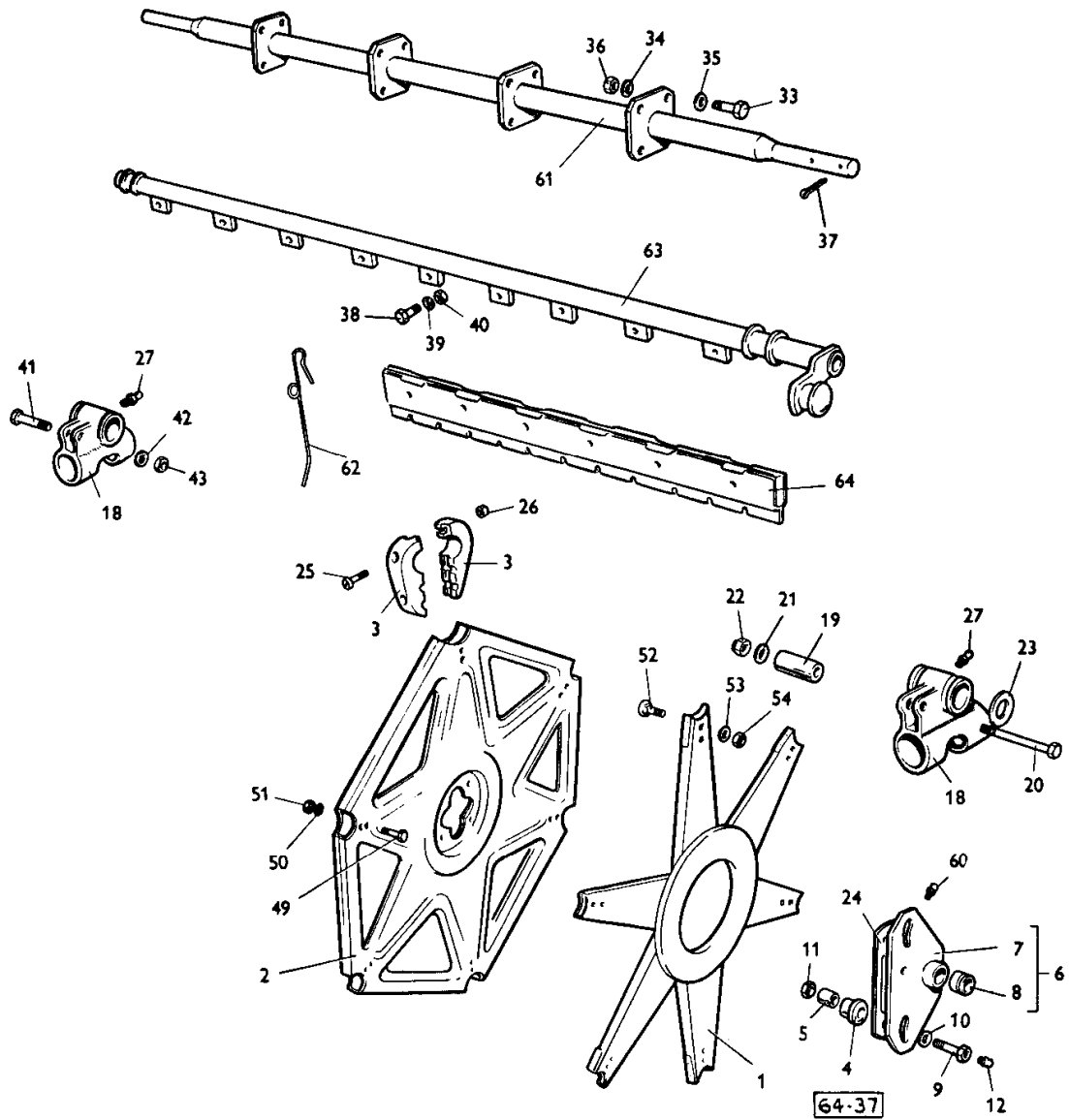
MOISSONNEUSE-BATTEUSE 510-8
510-8 COMBINE

957 292 M2 - Emission 1 - 11/67
957 292 M2 - Issue 1 - 11/67

MASSEY FERGUSON**MF 510 COMBINE, -> (FR) - 957292****957292****MOUNTING AND REMOVE OF DIVIDERS - SPAIN****11A**

Item	Part Number	Qty	Description	Comments
1	910570M1	6	Guide	
2	16148X	10	Rivet	
3	910569M1	1	Cover	Left Hand
	910567M1	1	Cover	Right Hand
4	910566M1	1	Upper Frame	Left Hand
	910568M1	1	Lower Link	Left Hand
5	910572M1	1	Upper Frame	Right Hand
	910571M1	1	Lower Link	Right Hand
6	353558X1	8	Screw Unf	
	353432X1	8	Lock Washer	
7	353825X1	8	Bolt Unf	
	353426X1	4	Nut Unf	
	353432X1	4	Lock Washer	
	353426X1	4	Nut Unf	

RABATTEUR PICK-UP
A : 3,60 m — B : 4,20 m — C : 3 m
PICK-UP
A : 12' — B : 14' — C : 10'



Imprimé en France
 Printed in France

MOISSONNEUSE-BATTEUSE 510-8
 510-8 COMBINE

957 292 M2 - Emission 1 - 11/67
 957 292 M2 - Issue 1 - 11/67

PICK-UP

Item	Part Number	Qty	Description	Comments
1	793682M92	1	Head	(A, B, C)
2	793686M91	3	Disc	(A, C)
	793686M91	4	Disc	(B)
3	796623M1	48	Bearing	(A, C)
	796623M1	60	Bearing	(B)
4	793690M1	2	Roller	(A, B, C)
5	793731M2	2	Bush	(A, B, C)
6	793691M92	1	Plate	(A, B, C)
				INCL. REF. 7, 8
7			Plate	See Page - Reference Number 6
8	793694M1	1	Bearing	(A, B, C)
9	794433M1	2	Bolt	(A, B, C)
10	353774X1	4	Washer	(A, B, C)
11	353427X1	2	Nut Unf	(A, B, C)
12	850778M1	2	Nipple	(A, B, C)
18	910133M91	2	Bearing Carrier	(A, B, C)
19	793695M2	1	Spacer	(A, B, C)
	353772X1		Washer	(A, B, C)
20	353591X1	1	Bolt Unf	(A, B, C)
21	353757X1	1	Washer	(A, B, C)
22	195911M1	1	Nut	(A, B, C)
23	637421M1	3	Washer	(A, B, C)
24	793708M1	1	Strap	(A, B, C)
25	355126X1	48	Screw Unc	(A, C)
	355126X1	60	Screw Unc	(B)
26	354120X1	48	Nut	(A, C)
	354120X1	60	Nut	(B)
	22427X	48	Lock Washer	(A, C)
	22427X	60	Lock Washer	(B)
27	643613M1	2	Nipple	(A, B, C)
33	353561X1	12	Screw Unf	(A, C)
	353561X1	16	Screw Unf	(B)
34	353432X1	12	Lock Washer	(A, C)
	353432X1	16	Lock Washer	(B)
35	355620X1	12	Washer	(A, C)
	355620X1	16	Washer	(B)
36	353426X1	12	Nut Unf	(A, C)
	353426X1	16	Nut Unf	(B)
37	354095X1	3	Pin	(A, B, C)
38	353521X1	36	Bolt Unf	(A, C)
	353521X1	54	Bolt Unf	(B)
39	353446X1	36	Lock Washer	(A, C)
	353446X1	54	Lock Washer	(B)
40	353916X1	36	Nut Unf	(A, C)
	353916X1	54	Nut Unf	(B)
41	353573X1	1	Bolt Unf	(A, B, C)
42	353757X1	1	Washer	(A, B, C)
43	195911M1	1	Nut	(A, B, C)
49	353521X1	36	Bolt Unf	(A, C)
	353521X1	48	Bolt Unf	(B)
50	353446X1	36	Lock Washer	(A, C)
	353446X1	48	Lock Washer	(B)
51	353916X1	36	Nut Unf	(A, C)
	353916X1	48	Nut Unf	(B)
52	376444X1	12	Bolt Unf	(A, B, C)
53	353446X1	12	Lock Washer	(A, B, C)
54	353916X1	12	Nut Unf	(A, B, C)
60	29951X	1	Nipple	(A, B, C)
61	794600M91	1	Shaft	(A)
	794599M91	1	Shaft	(C)
	794601M91	1	Shaft	(B)
62	796133M1	174	Reel Tine	(A)
	796133M1	204	Reel Tine	(B)
	796133M1	150	Reel Tine	(C)
63	793711M92	6	Bar	(A)
	795071M92	6	Bar	(B)
	793710M92	6	Bar	(C)
64	793724M91	12	Slat	(A)
	795059M91	18	Slat	(B)
	793723M91	12	Slat	(C)

MASSEY FERGUSON

MF 510 COMBINE, -> (FR) - 957292

957292

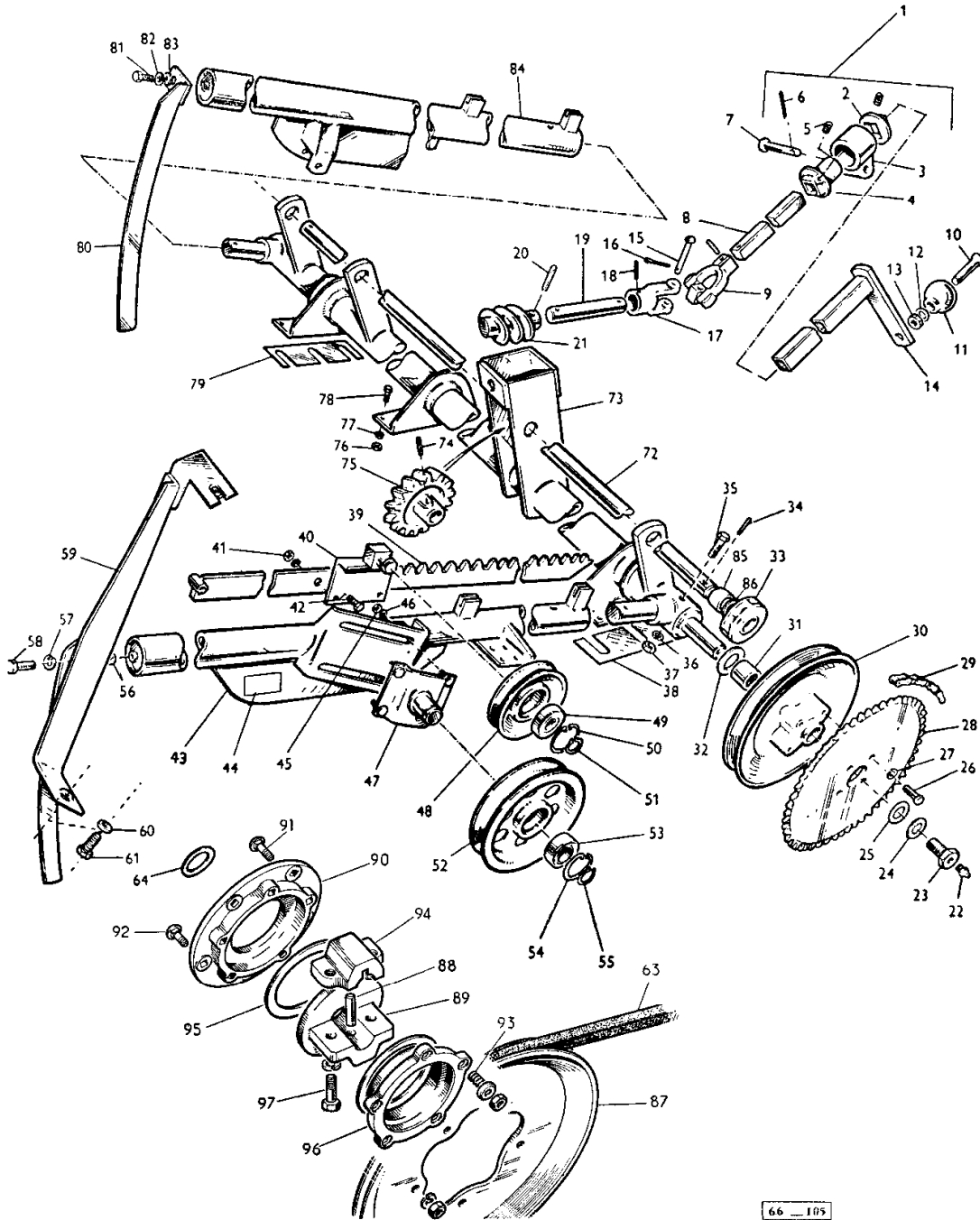
PICK-UP

13

Item	Part Number	Qty	Description	Comments
				(A)
				12'
				(B)
				14'
				(C)
				10'

14

COMMANDE DE RÉGLAGE DU RABATTEUR
REEL LIFT FRAME AND PULLEY



Imprimé en France
Printed in France

MOISSONNEUSE-BATTEUSE 510-8
510-8 COMBINE

957 292 M2 - Emission 1 - II/67
957 292 M2 - Issue 1 - II/67

Buy Now



Our support email:

ebooklibonline@outlook.com