

**320
322**



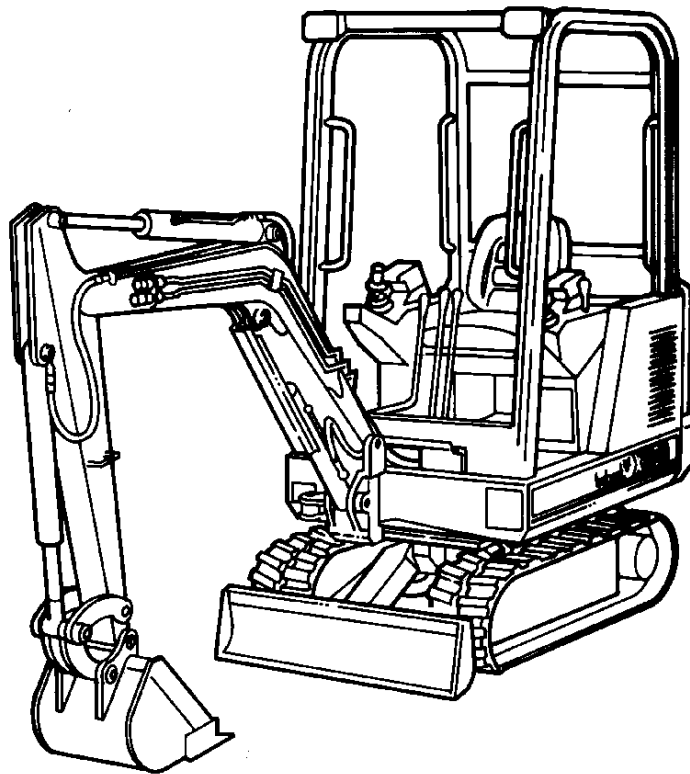
Bobcat®

Parts Manual

320 (S/N 562313001 & Above)

322 (S/N 552320001 & Above)

322 (S/N 517811001 & Above)



320/322 ALPHABETICAL INDEX

ACCUMULATOR	140	IDLER, FRONT	40
ADHESIVE	284	INJECTION PUMP	218
AIR CLEANER	231	INJECTOR NOZZLES	224
ALTERNATOR	186, 190	JOYSTICK	86, 90
ANTI-FREEZE	284	KEY	16, 18, 182
ARM	62	KIT, BELLY PAN	236
ARMREST	76, 78	KIT, WORK LIGHT	282
BATTERY	184	LAMP, WARNING	182
BEARING, ENGINE	208	LATCH	24, 34
BEARING, SWING	40	LEVER, BLADE	84
BELLY PAN KIT	236	LIGHT, SWITCH	182
BLADE	68	LUBRICANT	284
BLADE CYLINDER	170, 172	MANIFOLD, INTAKE & EXHAUST	217
BLADE LEVER	84	MICRO, SWITCH	182
BLOCK, DRAIN	86, 90	MOUNT, BREAKER	264
BOOM CYLINDER	64	OIL	284
BOOM	64	OIL FILTER, ENGINE	204
BREAKER	262	OIL PUMP, ENGINE	206
BUCKETS	242	PAINT	284
CAB	24	PISTON, ENGINE	208
CAB DOOR	34	PLATE	20
CAB, ROPS	20	POLISH	284
CABLE, BATTERY	184	PUMP, HYDRAULIC	166
CABLE, SPEED CONTROL	194	PUMP, INJECTION	218
CAMSHAFT	210	QUICK COUPLER	108, 237, 240
CANOPY, ROPS	18	RESERVOIR, HYDRAULIC	124
CHAIN	62	ROLLER, TRACK	54, 56, 58
COVER, VALVE	198	SCREEN, HYDRAULIC	124
CRANKSHAFT	208	SEALANT	284
CYLINDER, BLADE	170, 172	SENSOR, FUEL LEVEL	234
CYLINDER, BOOM SWING	178	SIGHT GAUGE	124
CYLINDER, BOOM	64	SPROCKET	40
CYLINDER, GAS SPRING	76, 78	STARTER	188
CYLINDER	106	SWING BEARING	40
DAMPENER, VIBRATION	20	SWING POST	64, 66
DECALS	257, 258, 259	SWITCH, FAN	38
DOME LIGHT	24	SWITCH, LIGHT	182
DOOR, CAB	34	SWITCH, MAGNETIC	184
DRIVE MOTOR	40	SWITCH, MICRO	182
ENGINE	195	SWITCH, OIL PRESSURE	206
ENTRY KIT, R. H.	274	SWITCH, WATER TEMP.	184
FAN SWITCH	38	SWITCH, WIPER/WASHER	24
FILTER, ENGINE OIL	204	SWITCH	184
FILTER, FUEL	234	SWIVEL JOINT	112
FLYWHEEL	194	TANK HEATER	279, 280
FRONT IDLER	48, 50, 52	TANK, FUEL	234
FUEL PUMP	218	TANK, HYDRAULIC	124
FUEL, GAUGE	182	TANK, WASHER	20
FUSE HOLDER	24	TOOTH, BUCKET	242
GAS SPRING CYLINDER	76, 78	TRACK ROLLER	40, 54, 56, 58
GASKET KIT, ENGINE	228, 230	TRACK	40, 60
GAUGE, FUEL	182	TRAVEL MOTOR	40
GLASS	24, 34	U-JOINT	194
HARNESS, CONSOLE	182	VALVE	162
HARNESS, ENGINE	182	WARNING, LAMP	182
HEATER HOSES	20	WATER PUMP	215
HEATER	20, 38	WATER TEMP. SWITCH	184
HINGE	34	WIPER/WASHER SWITCH	24
HOURMETER	184	WORK LIGHT KIT	282
HYD/HYDRO FLUID	284		

320/322 CONTENTS

MAIN FRAME	12-39
UPPERSTRUCTURE & ENGINE COVERS	12-15
UPPERSTRUCTURE & COUNTERWEIGHTS	16-17
OPERATOR CANOPY	18-19
CAB & MOUNTING	20-23
OPERATOR CAB	24-31
WINDOW ASSY	32-33
OPERATOR CAB (DOOR)	34-37
HEATER	38-39
UNDERCARRIAGE	40-61
UNDERCARRIAGE	40-43
RECOIL SPRING	44-47
FRONT IDLER	48-53
TRACK ROLLER	54-59
* TRACKS	60-61
WORK EQUIPMENT	62-71
ARM	62-63
BOOM	64-65
SWING POST	66-67
BLADE	68-71
CONTROLS	72-85
CONTROL CONSOLES	72-79
TRAVEL/STEERING LEVERS	80-81
BOOM SWING & AUXILIARY PEDAL	82-83
BLADE CONTROLS	84-85
HYDRAULIC SYSTEM	86-181
HYDRAULIC CIRCUITRY	86-125
SWIVEL JOINT	126-131
R.H. JOYSTICK CONTROLS	132-133
L.H. JOYSTICK CONTROLS	134-135
TRAVEL MOTOR	136-139
ACCUMULATOR VALVE	140-143
CONTROL VALVE ASSY.	144-147
VALVE SECTION	148-161
SWING MOTOR	162-163
BRAKE VALVE	164-165
GEAR PUMP	166-167
ARM CYLINDER	168-169
BLADE CYLINDER	170-173
BOOM CYLINDER	174-175
BUCKET CYLINDER	176-177
SWING CYLINDER	178-179
TRACK EXPANSION CYLINDER	180-181
ELECTRICAL SYSTEM	182-189
ELECTRICAL SYSTEM	182-185
ALTERNATOR	186-187
STARTER	188-189
POWER UNIT	190-235
ENGINE & ATTACHING PARTS	190-195
ENGINE	196
ROCKER ARM COVER	198-199
ROCKER ARM & VALVES	200-201
CYLINDER HEAD	202
OIL PAN	203
GEARCASE	204-205
CRANKCASE	206-207
PISTON & CRANKSHAFT	208-209
MAIN BEARING CASE	210
CAMSHAFT	211
FUEL CAMSHAFT	212
GOVERNOR GROUP	213
SPEED CONTROL & STOP LEVER	214-215
WATER PUMP	216
WATER FLANGE & THERMOSTAT	217
MANIFOLDS	218

320/322 CONTENTS (Cont'd)

POWER UNIT (CONT'D)	190-235
FUEL & INJECTION PUMP	219
INJECTION PUMP	220-221
INJECTOR NOZZLES	222-223
NOZZLE HOLDER	224-227
LOWER GASKET KIT	228-229
UPPER GASKET KIT	230-231
ENGINE AIR CLEANER	232
FUEL SYSTEM	234-235
ACCESSORIES	290-286
BELLY PAN KIT	238
BREAKER MOUNTING KIT	239-242
BUCKET	243-244
BUCKET TEETH	245
CAB DOOR KIT	247-248
CAB ENCLOSURE	249
CAB OR CANOPY	250
CHARGE KIT	251
DECALS	253-261
HYDRAULIC BREAKER TOOLS	262
HYDRAULIC BREAKER	263-268
ISO TO STANDARD CONTROLS	269
MOTION ALARM KIT	271-272
RAINGUARD KIT	273
RENTAL KIT	274
RIGHT HAND ENTRY KIT	275-276
SPECIAL APPLICATION KIT	277-280
TANK HEATER KIT	281-282
TWO SPEED SWITCH KIT	283
WORK LIGHT KIT	284
BULK ITEMS	285-286
NUMERICAL INDEX	287-330
NUMERICAL	287-330

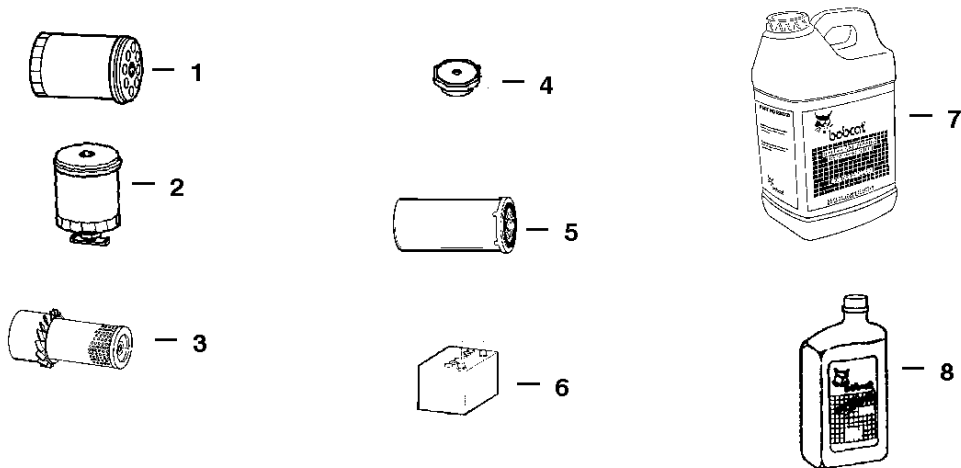
320/322 CONTENTS

MAIN FRAME	12-39
UPPERSTRUCTURE & ENGINE COVERS	12-15
UPPERSTRUCTURE & COUNTERWEIGHTS	16-17
OPERATOR CANOPY	18-19
CAB & MOUNTING	20-23
OPERATOR CAB	24-31
WINDOW ASSY	32-33
OPERATOR CAB (DOOR)	34-37
HEATER	38-39
UNDERCARRIAGE	40-61
UNDERCARRIAGE	40-43
RECOIL SPRING	44-47
FRONT IDLER	48-53
TRACK ROLLER	54-59
* TRACKS	60-61
WORK EQUIPMENT	62-71
ARM	62-63
BOOM	64-65
SWING POST	66-67
BLADE	68-71
CONTROLS	72-85
CONTROL CONSOLES	72-79
TRAVEL/STEERING LEVERS	80-81
BOOM SWING & AUXILIARY PEDAL	82-83
BLADE CONTROLS	84-85
HYDRAULIC SYSTEM	86-181
HYDRAULIC CIRCUITRY	86-125
SWIVEL JOINT	126-131
R.H. JOYSTICK CONTROLS	132-133
L.H. JOYSTICK CONTROLS	134-135
TRAVEL MOTOR	136-139
ACCUMULATOR VALVE	140-143
CONTROL VALVE ASSY.	144-147
VALVE SECTION	148-161
SWING MOTOR	162-163
BRAKE VALVE	164-165
GEAR PUMP	166-167
ARM CYLINDER	168-169
BLADE CYLINDER	170-173
BOOM CYLINDER	174-175
BUCKET CYLINDER	176-177
SWING CYLINDER	178-179
TRACK EXPANSION CYLINDER	180-181
ELECTRICAL SYSTEM	182-189
ELECTRICAL SYSTEM	182-185
ALTERNATOR	186-187
STARTER	188-189
POWER UNIT	190-235
ENGINE & ATTACHING PARTS	190-195
ENGINE	196
ROCKER ARM COVER	198-199
ROCKER ARM & VALVES	200-201
CYLINDER HEAD	202
OIL PAN	203
GEARCASE	204-205
CRANKCASE	206-207
PISTON & CRANKSHAFT	208-209
MAIN BEARING CASE	210
CAMSHAFT	211
FUEL CAMSHAFT	212
GOVERNOR GROUP	213
SPEED CONTROL & STOP LEVER	214-215
WATER PUMP	216
WATER FLANGE & THERMOSTAT	217
MANIFOLDS	218

320/322 CONTENTS (Cont'd)

POWER UNIT (CONT'D)	190-235
FUEL & INJECTION PUMP	219
INJECTION PUMP	220-221
INJECTOR NOZZLES	222-223
NOZZLE HOLDER	224-227
LOWER GASKET KIT	228-229
UPPER GASKET KIT	230-231
ENGINE AIR CLEANER	232
FUEL SYSTEM	234-235
ACCESSORIES	290-286
BELLY PAN KIT	238
BREAKER MOUNTING KIT	239-242
BUCKET	243-244
BUCKET TEETH	245
CAB DOOR KIT	247-248
CAB ENCLOSURE	249
CAB OR CANOPY	250
CHARGE KIT	251
DECALS	253-261
HYDRAULIC BREAKER TOOLS	262
HYDRAULIC BREAKER	263-268
ISO TO STANDARD CONTROLS	269
MOTION ALARM KIT	271-272
RAINGUARD KIT	273
RENTAL KIT	274
RIGHT HAND ENTRY KIT	275-276
SPECIAL APPLICATION KIT	277-280
TANK HEATER KIT	281-282
TWO SPEED SWITCH KIT	283
WORK LIGHT KIT	284
BULK ITEMS	285-286
NUMERICAL INDEX	287-330
NUMERICAL	287-330

**MAINTENANCE ITEMS
MODEL 330/322**



Ref.	Part Number	Description	Remarks	Page
1	6671057	ENGINE OIL FILTER		205
2	6667352	FUEL FILTER		235
3	897064	AIR CLEANER		232
4	6646678	RADIATOR CAP		235
5	6653336	HYDRAULIC FILTER		99
6	6670251	BATTERY (Exide)		185
	6665093	BATTERY (Mixon)		185
7	6563328	HYDRAULIC/HYDROSTATIC FLUID 2-2 1/2 (5 Gal)		286
	6722344	HYDRAULIC/HYDROSTATIC FLUID 5 Gallon		286
	6563330	HYDRAULIC/HYDROSTATIC FLUID 55 Gallon		286
		(HYDRAULIC RESERVOIR CAPACITY)		3.65 GALS. (13,8 L)
		(HYDRAULIC SYSTEM)		7.15 GALS. (27,1 L)
8	6657299	MOTOR OIL 15W40 CE/SG -1 Qt.		286
	6724558	MOTOR OIL 15W40 CE/SG -1 Gallon		286
	6674204	MOTOR OIL 15W40 CE/SG - 2.5 Gal.		286
	6657301	MOTOR OIL 10W30 CE/SG -1 Qt.		286
	6724557	MOTOR OIL 10W30 CE/SG -1 Gallon		286
	6674205	MOTOR OIL 10W30 CE/SG - 2.5 Gal.		286
	6657303	MOTOR OIL 30 CE/SG -1 Qt.		286
	6724559	MOTOR OIL 30 CE/SG -1 Gallon		286
	6674206	MOTOR OIL 30 CE/SG -2.5 Gal.		286
		(ENGINE OIL W/FILTER CAPACITY)		3.4 QTS. (3,8 L)

GENERAL INFORMATION

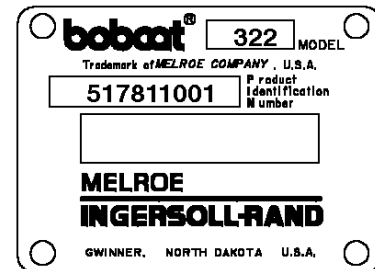
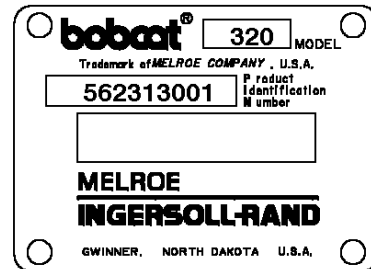
When using the machine serial number, use the complete number.

Some Serial Number breaks are not available at time of printing. These are listed as & Below or & Above.

The number shown in the quantity column in this manual is the number of parts needed for the illustration on the page. For some parts an "x" will be shown in the quantity column. This "x" indicates that the quantity to be used is "As Needed".

When references L.H. and R.H. are used in this manual, it is done from the operator's seat in the forward operating position.

Some of the illustrations and information found in this parts manual were supplied to Bobcat by machine component companies.



ABBREVIATIONS & SYMBOLS

SALES = Order from Gwinner Sales Department

NSS = Not Serviced Separately

NAP = Not Available as Parts

***** = Changed or Added Sections, Pages or Part Numbers

Disposition Code Definition (Found in the Remarks Column)

[A] = Use Up

[B] = Use Up on Other Application (See PNI)

[C] = File PDR Report With Bobcat Parts Sales

[D] = Part Number Error

Explications en francais	Grid Nb	3
Erklärungen auf deutsch	Grid Nb	4
Spiegazioni in italiano	Grid Nb	5
Explicaciones en espanol	Grid Nb	6
Verklaring in het Nederlands	Grid Nb	7

NOTE D'INFORMATION

Pour toute référence au numéro de série de l'engin, toujours donner le numéro complet.

Le chiffré apparaissant dans la colonne des quantités de ce manuel représentent le nombre de pièces nécessaires pour l'illustration reprise sur la page. Dans certains cas, on lira un "x" dans la colonne des quantités. Cet "x" indique que la quantité nécessaire est "selon besoin".

Pour toute référence vers la GAUCHE ou la DROITE dans ce manuel, considérer que la personne se trouve assise dans le siège de l'opérateur, en position de fonctionnement en marche avant.

Certaines illustrations et informations reprises dans ce manuel de pièces de rechange ont été fournies à Bobcat, par des fabricants de composants.

ABREVIATIONS & SYMBOLES

SALES	= Commander au Service Ventes à Bruxelles
NSS	= Pas vendu séparément
NAP	= Non disponible comme pièce de rechange
*	= Chapitre, page ou numéro de pièce modifié ou supplémentaire
BTI	= Bobcat Technical Information Bulletin : voir à la fin de la microfiché du modèle concerné ou la microfiche générale reprenant l'ensemble des "BTI".
was 6535403	= était avant 6535403
adj. (adjustment)	= réglage
Assembly	= ensemble
available W/Ref.	= disponible avec réf.
bulk/sold per foot	= en vrac/vendu par pied
does not include	= ne comprend pas
included with	= compris dans
I.D.	= D.I. (diamètre intérieur)
O.D.	= D.E. (diamètre extérieur)
not in kit	= pas en kit
W/ - WO/	= inclus/ - non inclus/
Qty	= quantité requise
see page/ref.	= voir page/réf.
used with ref/	= utilisé avec réf.
0,05 inch thickness	= 0,05 pouce d'épaisseur (un pouce = 25.4 mm)
weld on	= à souder

ALLGEMEINE INFORMATIONEN

Bei Angabe der Maschinen-Seriennummer stets die komplette Nummer angeben.

Bei der in der Mengenspalte (Anzahl) in diesem Handbuch angegebenen Zahl handelt es sich um die Anzahl von Teilen, die für die Abbildung auf der betreffenden Seite benötigt werden. Bei manchen Teilen in der Mengenspalte ist ein "x" angegeben. Dieses "x" weist darauf hin, dass sich die Anzahl der verwendeten Teile auf den "Bedarf" bezieht.

Bei Verwendung der Seitenangaben links und rechts in diesem Handbuch gelten diese für die Blickrichtung vom Fahrersitz aus, und zwar in Vorwärts-Betriebsrichtung.

Einige der in diesem Ersatzteilhandbuch aufgeführten Abbildungen und Informationen wurden der Bobcat, von den Herstellern von Maschinenbauteilen zur Verfügung gestellt.

ABKÜRZUNGEN UND SYMBOLE

SALES	= Bestellung bei der Verkaufsabteilung in Brüssel
NSS	= Nicht einzeln erhältlich
NAP	= Nicht als Ersatzteil erhältlich
*	= Geänderte oder hinzugefügte Abschnitte, Seiten oder Teilenummern
BTI	= Bobcat Technical Information Bulletin : Siehe am Ende der Mikrokarte des jeweiligen Modells oder der allgemeinen Mikrokarte der BTI.
was 6535403	= War 6535403
adj.	= Einstellung
Assembly	= Baugruppe
available W/Ref.	= erhältlich mit der Referenz
bulk/sold per foot	= Mengenabnahme / Verkauf pro Fuss
does not include	= beinhaltet nicht
included with	= enthalten in
I.D.	= Innendurchmesser
O.D.	= Aussendurchmesser
not in kit	= nicht in Bausatz
W/ - WO/	= mit/ - ohne/
Qty	= Anzahl
see page/ref.	= Siehe Seite / Referenz
used with ref.	= verwendet mit Referenz
0.05 inch thickness	= Dicke : 0.05 Zoll (ein Zoll = 25.4 mm)
weld on	= anschweißen

INFORMAZIONI GENERALI

Quando si usa il numero di serie della macchina usare il numero completo.

Il numero mostrato nella colonna della quantità di questo manuale corrisponde al numero di componenti necessari per l'illustrazione della pagina. Per alcuni componenti appare "X" nella colonna delle quantità. Questa "X" indica che la quantità da usare è "come necessario".

See in questo manuale si fa riferimento alla parte destra o sinistra, si intende dal sedile dell'operatore nella posizione in avanti di funzionamento.

Alcune delle illustrazioni e informazioni trovate in questo manuale di componenti sono state fornite alla Bobcat, da società di componenti di macchine.

SIMBOLI E ABBREVIAZIONI

SALES	= Ordinare al servizio vendite di Bruxelles
NSS	= Non vendute separatamente
NAP	= Non disponibile come componente
*	= Sezioni, pagine o numeri di componente cambiati o aggiunti
BTI	= (Bobcat Technical information) Ved. al termine del microfiche del modello relativo oppure microfiche generale
was 6535403	= era 6535403
adj. (adjustment)	= regol. (regolazione)
Assembly	= Complessivo
available W/ref.	= disponibile con rif.
bulk/sold per foot	= alla rinfusa/venduto al piede
does not include	= non comprende
Included with	= compreso con
I.D.	= d. i.
O.D.	= d. e.
not in kit	= non fa parte del kit
W/ - WO/	= con - senza
Qty	= Qtà
see page/ref	= ved. pagina/rif.
used with ref.	= usato con il rif.
0,05 inch thickness	= spessore 0,05 pollici (un pollice = 25,4 mm)
weld on	= a saldare

INFORMACION GENERAL

Al utilizar el número de serie de la máquina, debe emplearse el número completo.

El número que figura en la columna de "Unidades" en este manual es el número de piezas que se necesitan para la ilustración que consta en la página. En algunas piezas aparece una "x" en la columna de "Unidades". Esta "x" indica que las unidades a utilizar son "según sea necesario".

Cuando se empleen las referencias izq. y dcha., éstas se entienden mirando desde el asiento del conductor, en posición de marcha adelante.

Algunas de las ilustraciones y la información que figuran en este manual de piezas han sido facilitadas a Bobcat, por empresas de componentes de máquinas.

ABREVIATURAS Y SIMBOLOS

VENTAS	= Pedido al Departamento de Ventas de Bruselas
NSS	= No se vende por separado
NAP	= No disponible como pieza de repuesto
*	= Secciones, páginas o referencias modificadas o añadidas
BTI	= (Bobcat Technical Information) Ver al final de la microficha del modelo afectado o en la microficha general "Boletín de Información Técnica Bobcat".
was 6535403	= era anteriormente el 6535403
adj. (adjustment)	= ajuste
assembly	= conjunto
available W/Ref.	= disponible con la ref.
bulk/sold per foot	= a granel/vendido por pies
does not include	= no incluye
included with	= incluido en
I.D.	= diámetro interior
O.D.	= diámetro exterior
not in kit	= no en el kit
W/ - WO/	= con/ - sin
Qty	= Unidades
see page /ref.	= ver página/ref.
used with ref.	= empleado con la ref.
0,05 inch thickness	= 0,05 pulgadas de espesor (1 pulgada = 25,4 mm)
weld on	= debe ser soldado

ALGEMENE INFORMATIE

Als u het serienummer van de machine gebruikt, geef dan het gehele serienummer.

Het cijfer dat voorkomt in de kolom "Aantal", in deze handleiding, is het aantal onderdelen dat nodig is van de illustratie op de pagina. Voor sommige onderdelen staat er een "x" in de kolom "Aantal". Deze "x" betekent dat er een aantal "zoals nodig" vereist is.

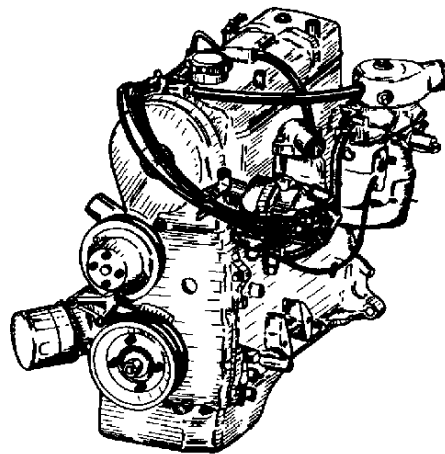
Wanneer er in deze handleiding naar "links" en naar "rechts" gerefereerd wordt, moet dit verstaan worden voor een bestuurder die in de bestuurdersstoel zit in de voorwaartse bedrijfsstand.

Sommige van de illustraties en informatie in deze onderdelen-handleiding werden door firma's van machine-componenten geleverd aan Bobcat.

AFKORTINGEN EN SYMBOLEN

SALES	= Bestellen bij de Verkoopafdeling te Brussel
NSS	= Niet afzonderlijk te verkrijgen
NAP	= Niet beschikbaar als onderdeel
*	= Gewijzigde of toegevoegde paragrafen, pagina's of onderdeelnummers
BTI	= Bobcat Technical Information Bulletin : Zie einde van de microfiche van het desbetreffende model of einde van de algemene microfiche die het geheel van alle "BTI" herneemt.
was 6535403	= was vroeger 6535403
adj. (adjustment)	= afstelling
Assembly	= geheel
available W/Ref.	= beschikbaar met ref.
bulk/sold per foot	= bulk/aan de meter verkocht
does not include	= bevat niet
includes with	= is bevat in
I.D.	= ϕ inw. (inwendige diameter)
O.D.	= ϕ uitw. (uitwendige diameter)
not in kit	= niet in de kit
W/ - WO/	= met/ - zonder/
Qty	= vereiste aantal
see page/ref.	= zie pagina/ref.
used with ref/	= gebruikt met ref.
0,05 inch thickness	= 0.05 inch dik (een inch = 25.4 mm)
weld on	= te lassen

**Both new and rebuilt
engines are available from Bobcat.**



Available from Bobcat Parts.

BOBCAT

INGERSOLL-RAND

Buy Now



Our support email:

ebooklibonline@outlook.com