

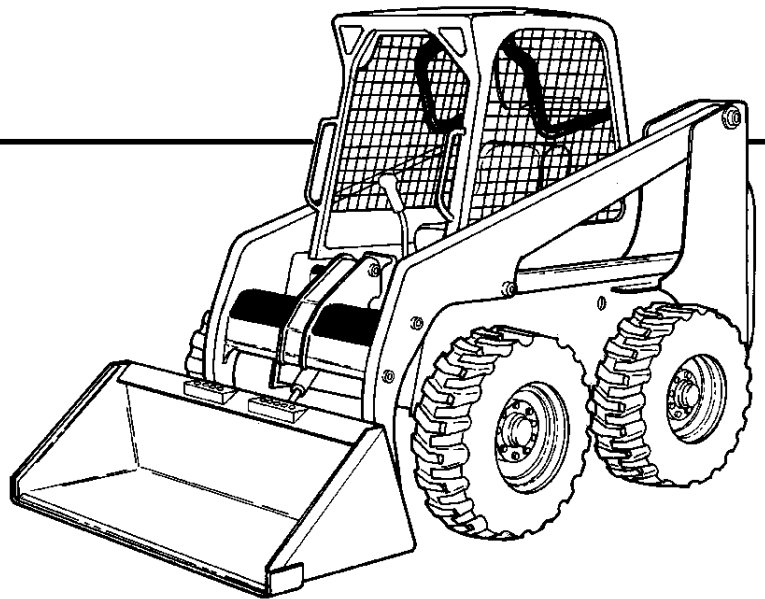
753



Bobcat®

G-SERIES
Parts
Manual

S/N 5158 30001 & Above
S/N 5162 20001 & Above



**EQUIPPED WITH
BOBCAT INTERLOCK
CONTROL SYSTEM (BICS™)**



753 G-SERIES CONTENTS

MAIN FRAME	12-45
MAINTENANCE ITEMS	12-13
MAINTENANCE SCHEDULE ITEMS	14-17
MAIN FRAME	18-19
OPERATOR CAB	20-23
SEAT & SEAT BAR	24-25
SEAT	26-27
PANELS	28-29
REAR DOOR	30-33
LIFT ARM & BOB-TACH	34-37
BOB-TACH	38-41
FUEL SYSTEM	42-45
DRIVE TRAIN	46-57
DRIVE TRAIN	46-47
MOTOR CARRIER	48-51
DISC BRAKE	52-55
AXLE	56-57
HYDRAULIC CIRCUITRY	58-147
HYDRAULIC CIRCUITRY	58-73
MANUAL LIFT RELEASE SYSTEM	74-77
AUXILIARY HYDRAULICS	78-85
TILT CYLINDER	86-87
LIFT CYLINDER	88-91
CONTROL PEDALS	92-93
HYDRAULIC CONTROL VALVE	94-139
BICS CONTROL VALVE	140-141
MANUAL LIFT RELEASE VALVE	142-143
PRESSURE RELEASE VALVE	144-145
BUCKET POSITIONING VALVE	146-147
HYDROSTATIC CIRCUITRY	148-185
HYDROSTATIC CIRCUITRY	148-161
HAND CONTROLS	162-165
HYDROSTATIC MOTOR	166-167
HYDROSTATIC PUMP	168-175
GEAR PUMP	176-179
HYDROSTATIC OIL FILTER	180-185
ELECTRICAL SYSTEM	186-229
CAB ELECTRICAL CIRCUITRY	186-189
ENGINE ELECTRICAL CIRCUITRY	190-199
CONTROLS ELECTRICAL	200-221
ALTERNATOR	222-225
STARTER	226-229
POWER UNIT	230-289
COOLING SYSTEM	230-233
ENGINE & ATTACHING PARTS	234-243
THROTTLE	244-245
COOLING FAN DRIVE ASSY.	246-247
ENGINE & GASKET KITS	248-249
GEARCASE	250-251
CRANKCASE	252-253
ROCKER ARM COVER	254-255
VALVE ROCKER ARM	256-257
CYLINDER HEAD	258-259

753 G-SERIES CONTENTS (Cont'd)

POWER UNIT (Cont'd)	230-289
OIL PAN	260-261
PISTON & CRANKSHAFT	262-263
FUEL CAMSHAFT	264-265
CAMSHAFT	266-267
WATER PUMP	268-269
WATER FLANGE & THERMOSTAT	270-271
MANIFOLDS	272-273
ENGINE STOP LEVER	274-275
GOVERNOR	276-277
SPEED CONTROL PLATE	278-279
INJECTION PUMP	280-283
INJECTOR NOZZLES	284-285
INJECTOR HOLDER	286-287
AIR CLEANER	288-289
ACCESSORIES & OPTIONS	293-458
ACS CONVERSION KIT	293-294
ACCESS COVER	295-296
ACCESSORIES HARNESS	297-298
AIR DEFLECTOR KIT	299-300
AXLE SEAL KIT	301-302
BACK-UP ALARM	303-304
BEACON	305-306
BLOCK HEATER	307-308
BOB-TACH LEVERS	309-310
BUCKET POSITIONING VALVE KIT	311-314
CAB DOOR	315-330
CAB ENCLOSURE	331-334
CAB WINDOWS	335-340
COUNTERWEIGHT KIT	341-342
DECALS	343-346
DELUXE CAB	347-350
ELECTRICAL CONNECTOR KIT	351-352
ELECTRICAL CONTROLS KIT	353-362
ENGINE MOUNT KIT	363-364
EUROPEAN ACCESSORIES	365-370
FIRE EXTINGUISHER	371-372
F.O.P.S. KIT	373-374
FLASHER LIGHTS	375-376
GAS SPRING KIT	377-378
HAND CONTROL KIT	379-382
HEATER KIT	383-386
HEATER	387-394
HEATER PLUMBING KIT	395-398
HORN KIT	399-400
LIFT KIT	401-404
LIGHT KIT	405-406
MUFFLER/PURIFIER KIT	407-408
POWER BOB-TACH KIT	409-412
POWER BOB-TACH	413-418
RADIATOR SCREEN KIT	419-420
REAR AUXILIARY KIT	421-426
REAR AUXILIARY VALVE	427-428
REAR DOOR LOCK	429-430

753 G-SERIES CONTENTS (Cont'd)

ACCECCORIES & OPTIONS (Cont'd)	293-458
REAR WIPER	431-432
SEAL ENCLOSURE KIT	433-434
SEAT	435-438
SEAT BELT	439-444
SOUND KIT	445-446
SOUND OPTION	447-448
SOUND REDUCTION HARDHAT	449-450
STROBE LIGHT	451-452
TIRES & RIMS	453-456
BULK ITEMS	457-458
NUMERICAL INDEX	459-513
NUMERICAL INDEX	459-513

753 G-SERIES CONTENTS

MAIN FRAME	12-45
MAINTENANCE ITEMS	12-13
MAINTENANCE SCHEDULE ITEMS	14-17
MAIN FRAME	18-19
OPERATOR CAB	20-23
SEAT & SEAT BAR	24-25
SEAT	26-27
PANELS	28-29
REAR DOOR	30-33
LIFT ARM & BOB-TACH	34-37
BOB-TACH	38-41
FUEL SYSTEM	42-45
DRIVE TRAIN	46-57
DRIVE TRAIN	46-47
MOTOR CARRIER	48-51
DISC BRAKE	52-55
AXLE	56-57
HYDRAULIC CIRCUITRY	58-147
HYDRAULIC CIRCUITRY	58-73
MANUAL LIFT RELEASE SYSTEM	74-77
AUXILIARY HYDRAULICS	78-85
TILT CYLINDER	86-87
LIFT CYLINDER	88-91
CONTROL PEDALS	92-93
HYDRAULIC CONTROL VALVE	94-139
BICS CONTROL VALVE	140-141
MANUAL LIFT RELEASE VALVE	142-143
PRESSURE RELEASE VALVE	144-145
BUCKET POSITIONING VALVE	146-147
HYDROSTATIC CIRCUITRY	148-185
HYDROSTATIC CIRCUITRY	148-161
HAND CONTROLS	162-165
HYDROSTATIC MOTOR	166-167
HYDROSTATIC PUMP	168-175
GEAR PUMP	176-179
HYDROSTATIC OIL FILTER	180-185
ELECTRICAL SYSTEM	186-229
CAB ELECTRICAL CIRCUITRY	186-189
ENGINE ELECTRICAL CIRCUITRY	190-199
CONTROLS ELECTRICAL	200-221
ALTERNATOR	222-225
STARTER	226-229
POWER UNIT	230-289
COOLING SYSTEM	230-233
ENGINE & ATTACHING PARTS	234-243
THROTTLE	244-245
COOLING FAN DRIVE ASSY.	246-247
ENGINE & GASKET KITS	248-249
GEARCASE	250-251
CRANKCASE	252-253
ROCKER ARM COVER	254-255
VALVE ROCKER ARM	256-257
CYLINDER HEAD	258-259

753 G-SERIES CONTENTS (Cont'd)

POWER UNIT (Cont'd)	230-289
OIL PAN	260-261
PISTON & CRANKSHAFT	262-263
FUEL CAMSHAFT	264-265
CAMSHAFT	266-267
WATER PUMP	268-269
WATER FLANGE & THERMOSTAT	270-271
MANIFOLDS	272-273
ENGINE STOP LEVER	274-275
GOVERNOR	276-277
SPEED CONTROL PLATE	278-279
INJECTION PUMP	280-283
INJECTOR NOZZLES	284-285
INJECTOR HOLDER	286-287
AIR CLEANER	288-289
ACCESSORIES & OPTIONS	293-458
ACS CONVERSION KIT	293-294
ACCESS COVER	295-296
ACCESSORIES HARNESS	297-298
AIR DEFLECTOR KIT	299-300
AXLE SEAL KIT	301-302
BACK-UP ALARM	303-304
BEACON	305-306
BLOCK HEATER	307-308
BOB-TACH LEVERS	309-310
BUCKET POSITIONING VALVE KIT	311-314
CAB DOOR	315-330
CAB ENCLOSURE	331-334
CAB WINDOWS	335-340
COUNTERWEIGHT KIT	341-342
DECALS	343-346
DELUXE CAB	347-350
ELECTRICAL CONNECTOR KIT	351-352
ELECTRICAL CONTROLS KIT	353-362
ENGINE MOUNT KIT	363-364
EUROPEAN ACCESSORIES	365-370
FIRE EXTINGUISHER	371-372
F.O.P.S. KIT	373-374
FLASHER LIGHTS	375-376
GAS SPRING KIT	377-378
HAND CONTROL KIT	379-382
HEATER KIT	383-386
HEATER	387-394
HEATER PLUMBING KIT	395-398
HORN KIT	399-400
LIFT KIT	401-404
LIGHT KIT	405-406
MUFFLER/PURIFIER KIT	407-408
POWER BOB-TACH KIT	409-412
POWER BOB-TACH	413-418
RADIATOR SCREEN KIT	419-420
REAR AUXILIARY KIT	421-426
REAR AUXILIARY VALVE	427-428
REAR DOOR LOCK	429-430

753 G-SERIES CONTENTS (Cont'd)

ACCECCORIES & OPTIONS (Cont'd)	293-458
REAR WIPER	431-432
SEAL ENCLOSURE KIT	433-434
SEAT	435-438
SEAT BELT	439-444
SOUND KIT	445-446
SOUND OPTION	447-448
SOUND REDUCTION HARDHAT	449-450
STROBE LIGHT	451-452
TIRES & RIMS	453-456
BULK ITEMS	457-458
NUMERICAL INDEX	459-513
NUMERICAL INDEX	459-513

GENERAL INFORMATION

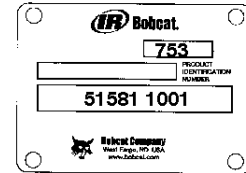
When using the machine serial number, use the complete number.

Some Serial Number breaks are not available at time of printing. These are listed as & Below or & Above.

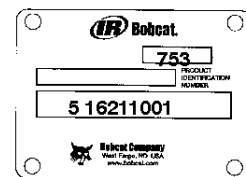
The number shown in the quantity column in this manual is the number of parts needed for the illustration on the page. For some parts an "x" will be shown in the quantity column. This "x" indicates that the quantity to be used is "As Needed".

When references L.H. and R.H. are used in this manual, it is done from the operator's seat in the forward operating position.

Some of the illustrations and information found in this parts manual were supplied to Bobcat by machine component companies.



Domestic



Export

ABBREVIATIONS & SYMBOLS

- SALES** = Order from Gwinner Sales Department
- NSS** = Not Serviced Separately
- NAP** = Not Available as Parts
- *** = Changed or Added Sections, Pages or Part Numbers

Disposition Code Definition (Found in the Remarks Column)

- [A]** = Use Up
- [B]** = Use Up on Other Application (See PNI)
- [C]** = File PDR Report With Bobcat Parts Sales
- [D]** = Part Number Error

Explications en francais	Grid Nb	3
Erklärungen auf deutsch	Grid Nb	4
Spiegazioni in italiano	Grid Nb	5
Explicaciones en espanol	Grid Nb	6
Verklaring in het Nederlands	Grid Nb	7

NOTE D'INFORMATION

Pour toute référence au numéro de série de l'engin, toujours donner le numéro complet.

Le chiffré apparaissant dans la colonne des quantités de ce manuel représentent le nombre de pièces nécessaires pour l'illustration reprise sur la page. Dans certains cas, on lira un "x" dans la colonne des quantités. Cet "x" indique que la quantité nécessaire est "selon besoin".

Pour toute référence vers la GAUCHE ou la DROITE dans ce manuel, considérer que la personne se trouve assise dans le siège de l'opérateur, en position de fonctionnement en marche avant.

Certaines illustrations et informations reprises dans ce manuel de pièces de rechange ont été fournies à Bobcat/Ingersoll-Rand par des fabricants de composants.

ABREVIATIONS & SYMBOLES

SALES	= Commander au Service Ventes à Bruxelles
NSS	= Pas vendu séparément
NAP	= Non disponible comme pièce de rechange
*	= Chapitre, page ou numéro de pièce modifié ou supplémentaire
BTI	= Bobcat Technical Information Bulletin : voir à la fin de la microfiché du modèle concerné ou la microfiche générale reprenant l'ensemble des "BTI".
was 6535403	= était avant 6535403
adj. (adjustment)	= réglage
Assembly	= ensemble
available W/Ref.	= disponible avec réf.
bulk/sold per foot	= en vrac/vendu par pied
does not include	= ne comprend pas
included with	= compris dans
I.D.	= D.I. (diamètre intérieur)
O.D.	= D.E. (diamètre extérieur)
not in kit	= pas en kit
W/ - WO/	= inclus/ - non inclus/
Qty	= quantité requise
see page/ref.	= voir page/réf.
used with ref/	= utilisé avec réf.
0,05 inch thickness	= 0,05 pouce d'épaisseur (un pouce = 25.4 mm)
weld on	= à souder

ALLGEMEINE INFORMATIONEN

Bei Angabe der Maschinen-Seriennummer stets die komplette Nummer angeben.

Bei der in der Mengenspalte (Anzahl) in diesem Handbuch angegebenen Zahl handelt es sich um die Anzahl von Teilen, die für die Abbildung auf der betreffenden Seite benötigt werden. Bei manchen Teilen in der Mengenspalte ist ein "x" angegeben. Dieses "x" weist darauf hin, dass sich die Anzahl der verwendeten Teile auf den "Bedarf" bezieht.

Bei Verwendung der Seitenangaben links und rechts in diesem Handbuch gelten diese für die Blickrichtung vom Fahrersitz aus, und zwar in Vorwärts-Betriebsrichtung.

Einige der in diesem Ersatzteillandbuch aufgeführten Abbildungen und Informationen wurden der Bobcat/Ingersoll-Rand von den Herstellern von Maschinenbauteilen zur Verfügung gestellt.

ABKÜRZUNGEN UND SYMBOLE

SALES	= Bestellung bei der Verkaufsabteilung in Brüssel
NSS	= Nicht einzeln erhältlich
NAP	= Nicht als Ersatzteil erhältlich
*	= Geänderte oder hinzugefügte Abschnitte, Seiten oder Teilenummern
BTI	= Bobcat Technical Information Bulletin : Siehe am Ende der Mikrokarte des jeweiligen Modells oder der allgemeinen Mikrokarte der BTI.
was 6535403	= War 6535403
adj.	= Einstellung
Assembly	= Baugruppe
available W/Ref.	= erhältlich mit der Referenz
bulk/sold per foot	= Mengenabnahme / Verkauf pro Fuss
does not include	= beinhaltet nicht
included with	= enthalten in
I.D.	= Innendurchmesser
O.D.	= Aussendurchmesser
not in kit	= nicht in Bausatz
W/ - WO/	= mit/ - ohne/
Qty	= Anzahl
see page/ref.	= Siehe Seite / Referenz
used with ref.	= verwendet mit Referenz
0.05 inch thickness	= Dicke : 0.05 Zoll (ein Zoll = 25.4 mm)
weld on	= anschweissen

INFORMAZIONI GENERALI

Quando si usa il numero di serie della macchina usare il numero completo.

Il numero mostrato nella colonna della quantità di questo manuale corrisponde al numero di componenti necessari per l'illustrazione della pagina. Per alcuni componenti appare "X" nella colonna delle quantità. Questa "X" indica che la quantità da usare è "come necessario".

See in questo manuale si fa riferimento alla parte destra o sinistra, si intende dal sedile dell'operatore nella posizione in avanti di funzionamento.

Alcune delle illustrazioni e informazioni trovate in questo manuale di componenti sono state fornite alla Bobcat/Ingersoll-Rand da società di componenti di macchine.

SIMBOLI E ABBREVIAZIONI

SALES	= Ordinare al servizio vendite di Bruxelles
NSS	= Non vendute separatamente
NAP	= Non disponibile come componente
*	= Sezioni, pagine o numeri di componente cambiati o aggiunti
BTI	= (Bobcat Technical information) Ved. al termine del microfiche del modello relativo oppure microfiche generale
was 6535403	= era 6535403
adj. (adjustment)	= regol. (regolazione)
Assembly	= Complessivo
available W/Ref.	= disponibile con rif.
bulk/sold per foot	= alla rinfusa/venduto al piede
does not include	= non comprende
Included with	= compreso con
I.D.	= d. i.
O.D.	= d. e.
not in kit	= non fa parte del kit
W/ - WO/	= con - senza
Qty	= Qtà
see page/ref	= ved. pagina/rif.
used with ref.	= usato con il rif.
0,05 inch thickness	= spessore 0,05 pollici (un pollice = 25,4 mm)
weld on	= a saldare

INFORMACION GENERAL

Al utilizar el número de serie de la máquina, debe emplearse el número completo.

El número que figura en la columna de "Unidades" en este manual es el número de piezas que se necesitan para la ilustración que consta en la página. En algunas piezas aparece una "x" en la columna de "Unidades". Esta "x" indica que las unidades a utilizar son "según sea necesario".

Cuando se empleen las referencias izq. y dcha., éstas se entienden mirando desde el asiento del conductor, en posición de marcha adelante.

Algunas de las ilustraciones y la información que figuran en este manual de piezas han sido facilitadas a Bobcat/Ingersoll-Rand por empresas de componentes de máquinas.

ABREVIATURAS Y SIMBOLOS

VENTAS	= Pedido al Departamento de Ventas de Bruselas
NSS	= No se vende por separado
NAP	= No disponible como pieza de repuesto
*	= Secciones, páginas o referencias modificadas o añadidas
BTI	= (Bobcat Technical Information) Ver al final de la microficha del modelo afectado o en la microficha general "Boletín de Información Técnica Bobcat".
was 6535403	= era anteriormente el 6535403
adj. (adjustment)	= ajuste
assembly	= conjunto
available W/Ref.	= disponible con la ref.
bulk/sold per foot	= a granel/vendido por pies
does not include	= no incluye
included with	= incluido en
I.D.	= diámetro interior
O.D.	= diámetro exterior
not in kit	= no en el kit
W/ - WO/	= con/ - sin
Qty	= Unidades
see page /ref.	= ver página/ref.
used with ref.	= empleado con la ref.
0,05 inch thickness	= 0,05 pulgadas de espesor (1 pulgada = 25,4 mm)
weld on	= debe ser soldado

ALGEMENE INFORMATIE

Als u het serienummer van de machine gebruikt, geef dan het gehele serienummer.

Het cijfer dat voorkomt in de kolom "Aantal", in deze handleiding, is het aantal onderdelen dat nodig is van de illustratie op de pagina. Voor sommige onderdelen staat er een "x" in de kolom "Aantal". Deze "x" betekent dat er een aantal "zoals nodig" vereist is.

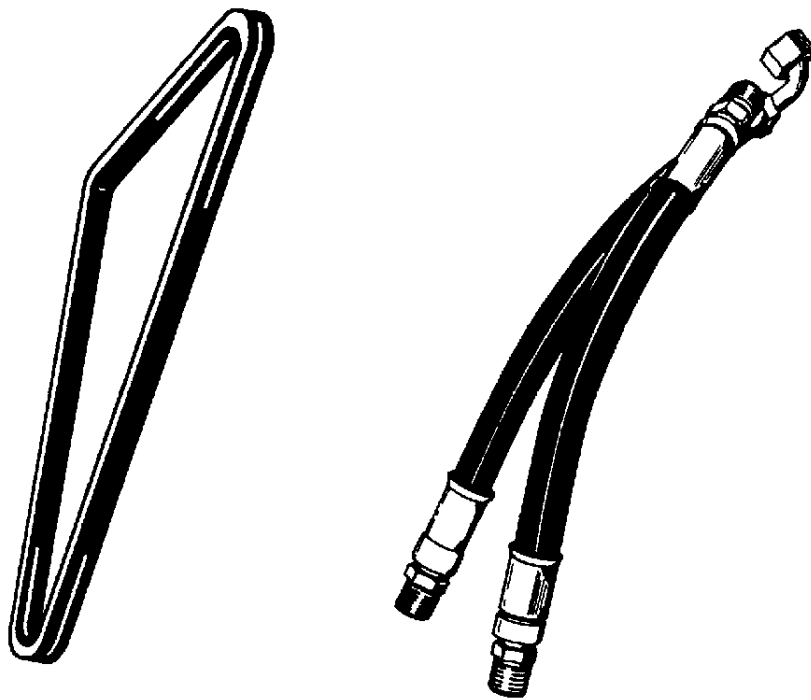
Wanneer er in deze handleiding naar "links" en naar "rechts" gerefereerd wordt, moet dit verstaan worden voor een bestuurder die in de bestuurdersstoel zit in de voorwaartse bedrijfsstand.

Sommige van de illustraties en informatie in deze onderdelen-handleiding werden door firma's van machine-componenten geleverd aan Bobcat/Ingersoll-Rand.

AFKORTINGEN EN SYMBOLEN

SALES	= Bestellen bij de Verkoopafdeling te Brussel
NSS	= Niet afzonderlijk te verkrijgen
NAP	= Niet beschikbaar als onderdeel
*	= Gewijzigde of toegevoegde paragrafen, pagina's of onderdeelnummers
BTI	= Bobcat Technical Information Bulletin : Zie einde van de microfiche van het desbetreffende model of einde van de algemene microfiche die het geheel van alle "BTI" herneemt.
was 6535403	= was vroeger 6535403
adj. (adjustment)	= afstelling
Assembly	= geheel
available W/Ref.	= beschikbaar met ref.
bulk/sold per foot	= bulk/aan de meter verkocht
does not include	= bevat niet
includes with	= is bevat in
I.D.	= ϕ inw. (inwendige diameter)
O.D.	= ϕ uitw. (uitwendige diameter)
not in kit	= niet in de kit
W/ - WO/	= met/ - zonder/
Qty	= vereiste aantal
see page/ref.	= zie pagina/ref.
used with ref/	= gebruikt met ref.
0,05 inch thickness	= 0.05 inch dik (een inch = 25.4 mm)
weld on	= te lassen

**Use only Bobcat belts and hoses
to maintain maximum service life.**



Available from Bobcat Parts.



Buy Now



Our support email:

ebooklibonline@outlook.com