

873

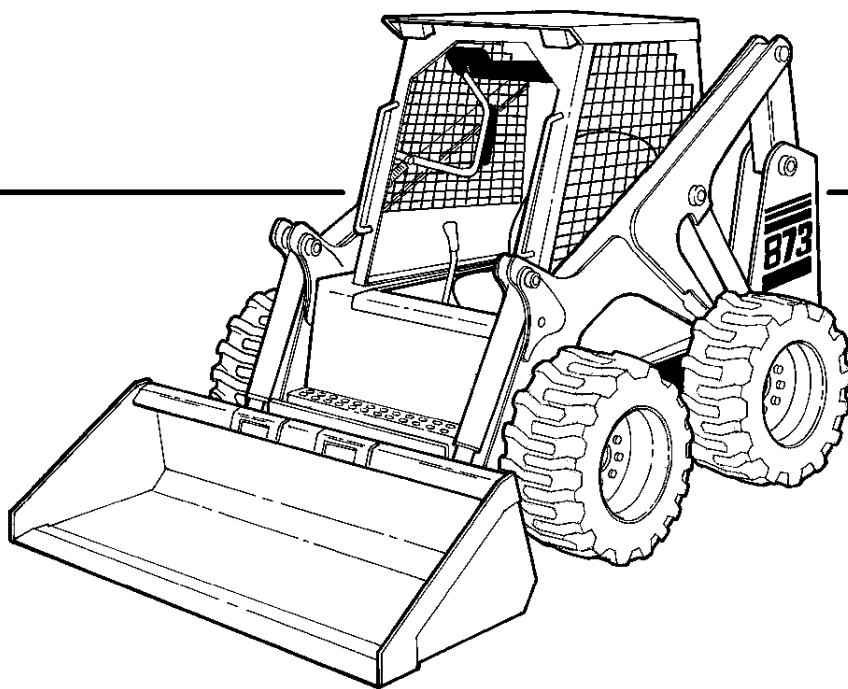


Bobcat®

Parts Manual

S/N 5141 11001-39999

S/N 5142 11001-39999



873 ALPHABETICAL INDEX

ADHESIVE	532	LIFT ARM	32
AIR CLEANER	302, 306, 352	LIGHT	262
ALTERNATOR	266, 272, 286, 314	LIGHTS, FLASHER	415
AUXILIARY HYDRAULICS ...	104, 420	LOCK, REAR DOOR	495, 496
AXLE	51	LUBRICANT	532
BACK UP ALARM	357	MAIN FRAME	12
BATTERY	268, 274	MANIFOLD	326
BEACON	361	MODULE, AUX. CONTROLS .	278, 280
BELT, COOLING FAN	292	MOTOR, HYDRO.	168-188
BELT, MAIN DRIVE	314	MOUNT, ENGINE	314
BELT, PUMP DRIVE	312	MOUNT, HYDRO. PUMP	316
BELT, TIMING	334	MUFFLER	302, 306
BLACK GOLD	532	OIL COOLER	192
BLOCK HEATER	362	OIL PAN	340
BLOCK, ENG.	340	OIL	532
BOB-TACH	36	PAINT	532
BOOT, RUBBER	38	PANEL, INSTRUMENT	258, 262
BUCKET POS. KIT	366	PEDALS, CONTROL	132
CAB ENCLOSURE	372	PISTON	346
CAB	16	POLISH	532
CABLE, BATTERY	266, 272	PUMP, GEAR	251
CAMSHAFT	332	PUMP, HYDRO.	234, 238, 242, 246
CAP, FUEL	40	PUMP, OIL	351
CAP, HYD. OIL	168, 172	PURIFIER	477
CHAINCASE	12	QUICK COUPLERS	106, 420-432
COOLING FAN DRIVE ASSY.	320	RIM	527
CRANKSHAFT	346	SEALANT	532
CYLINDER HEAD	328	SEAT BELT	18
CYLINDER, LIFT	127	SEAT	18, 522, 524, 526
CYLINDER, TILT	54-90, 112-126	SENDER, FUEL	40, 266, 272
DECALS	388	SENDER, HYDRO. PRESS. ...	266, 272
DIPSTICK, ENG. OIL	340	SENSOR, RPM	274
DISC BRAKE	48	SHOCK CONTROLS	218
DISPLAY, LCD	262	SHOCK, CONTROLS	214
DOOR, CAB	374	SHORT BLOCK, NAP	322
DOOR, REAR	28, 30	SOLENOID	268, 274
DRIVE MOUNT ASSY.	45	SPROCKET, AXLE	44, 51, 52
ENGINE	312, 314, 322	STARTER	266, 272, 288, 290
FAN	292	STOP, LIFT ARM	34
FILTER, AIR	352	STROBE LIGHT	519
FILTER, ENG. OIL	340	SWITCH, ENG. OIL PRESS. .	266, 272
FILTER, FUEL	40	SWITCH, ENG. TEMP.	266, 272
FILTER, HYD. OIL .	192, 198-210, 255	SWITCH, GLOW PLUG	258
FUEL SYSTEM	40	SWITCH, HYDRO. TEMP.	266, 272
GAS SPRING	16	SWITCH, IGNITION	258, 262
GASKET KITS, ENG.	322	SWITCH, LIGHT	262
GUAGE, ENG. TEMP.	258	TANK, FUEL	40
GUAGE, FUEL	258	TANK, HYDRO.	168-188
HARNESS, CAB	258, 262	THROTTLE	318
HARNESS, CONTROLS	278	TIRE	527
HARNESS, ENGINE	266, 272	TURBOCHARGER	340
HARNESS, LIGHTS	469	VALVE STEM	527
HOOD, ENGINE	28, 30	VALVE, BKT. POS.	366
HORN	464	VALVE, CONTROL .	134, 138, 158, 162
HOURLMETER	260	VALVE, ENG.	328
HUB, AXLE	51, 52	VALVE, HYD. CONTROL	144, 148, 152
IGNITION SWITCH	258, 262	VOLTMETER	258
INJECTION NOZZLES	348	WINDOW, REAR	382
INJECTORS	348	WINDOW, SIDE	382
LATCH, REAR DOOR	28, 30	WINDSHIELD WIPER	498
LEVER, PINTLE	218		

873 CONTENTS

MAIN FRAME	12-45
MAIN FRAME	12-15
OPERATOR CAB	16-17
SEAT	18-21
SEAT BAR	22-25
SEAT	26-29
REAR DOOR	30-33
LIFT ARMS & BOBTACH	34-37
BOB-TACH	38-39
PANELS	40-41
FUEL SYSTEM	42-45
DRIVE TRAIN	46-57
DRIVE TRAIN	46-47
MOTOR CARRIER	48-49
DISC BRAKE	50-53
AXLE	54-57
HYDRAULIC CIRCUITRY	58-175
HYDRAULIC CIRCUITRY	58-97
LIFT & TILT CONTROL CIRCUITRY	98-107
AUXILIARY HYDRAULICS	108-115
TILT CYLINDER	116-131
LIFT CYLINDER	132-133
TILT LOCK VALVE	134-135
LIFT LOCK VALVE	136-137
MANUAL LIFT RELEASE VALVE	138-139
CONTROL PEDALS	140-141
HYDRAULIC CONTROL VALVE	142-163
BICS CONTROL VALVE	164-165
HYDRAULIC CONTROL VALVE (W/BICS CONTROL VALVE)	166-169
HYDRAULIC CONTROL VALVE ((AHC))	170-173
BUCKET POSITIONING VALVE	174-175
HYDROSTATIC SYSTEM	176-267
HYDROSTATIC CIRCUITRY	176-221
HAND CONTROLS	222-227
HYDROSTATIC MOTOR	228-233
HYDROSTATIC PUMP	234-257
DOUBLE GEAR PUMP	258-259
GEAR PUMP	260-261
HYDROSTATIC OIL FILTER	262-267
ELECTRICAL SYSTEM	268-301
CAB ELECTRICAL CIRCUITRY	268-275
ENGINE ELECTRICAL CIRCUITRY	276-287
ELECTRICAL CONTROLS	288-289
ELECTRICAL CONTROLS	290-295
ALTERNATOR	296-297
STARTER	298-301
POWER UNIT	302-365
COOLING SYSTEM	302-311
ENGINE & ATTACHING PARTS	312-327
THROTTLE	328-329
COOLING FAN DRIVE ASSY.	330-331
ENGINE & GASKET KITS	332-335
MANIFOLDS	336-337
CYLINDER HEAD & COVER	338-341

873 CONTENTS (Cont'd)

POWER UNIT (CONT'D)	302-365
CAMSHAFT	342-345
FRONT COVER	346-349
CRANKCASE & OIL PAN	350-355
PISTON & CRANKSHAFT	356-357
FUEL INJECTION SYSTEM	358-361
OIL PUMP	362-363
AIR CLEANER	364-365
ACCESSORIES & OPTIONS	369-578
ACCESS COVER	369-370
BACK-UP ALARM KIT	371-376
BEACON LIGHT	377-378
BLOCK HEATER	379-382
BRAKE KIT	383-384
BUCKET POSITIONING KIT (S/N 5141 21999 & BELOW)	385-386
BUCKET POSITION ON-OFF KIT	387-388
BUCKET POSITIONING KIT (S/N 5154 22001-39999)	389-390
BUCKET SHIELD KIT	391-392
CAB ENCLOSURE	393-394
CAB DOOR	395-398
CAB ENCLOSURE	399-402
CAB WINDOWS	403-404
COUNTERWEIGHT KIT	405-408
DEBRIS EJECTOR KIT	409-410
DECALS	411-416
ELECTRICAL CONTROLS KIT	417-420
* ELECTRICAL CONTROLS KIT	421-422
ENGINE MOUNT KITS	423-424
EUROPEAN ACCESSORIES	425-440
FLASHER LIGHTS	441-444
FRONT AUXILIARY KIT	445-460
FRONT AUXILIARY PRESSURE RELIEF KIT	461-462
GAS SPRING KIT	463-464
HAND CONTROLS KIT	465-470
* HAND CONTROL KIT	471-474
HANDLE KITS	475-476
HEATER KIT - SINGLE	477-480
HEATER - SINGLE	481-482
HEATER PLUMBING KIT - SINGLE	483-484
HEATER KIT - DUAL	485-492
HORN KIT	493-496
KEYLESS IGNITION	497-498
LIFT KIT	499-500
LIFT ARM REPLACEMENT KIT	501-502
LIGHT KIT	503-506
M46-M44 PUMP CONVERSION	507-510
PURIFIER	511-512
PUSH TO OPERATE KIT	513-516
REAR AUXILIARY	517-528
REAR AUXILIARY VALVE	529-532
REAR DOOR LOCK	533-536
REAR WIPER KIT	537-538
RENTAL KIT	539-540
SEAT BAR KIT	541-544
SEAT RAIL COVER KIT	545-546

873 CONTENTS (Cont'd)

ACCESSORIES & OPTIONS	369-578
SEAT KIT	547-548
SEAT SENSOR OVERRIDE KIT	549-552
SHUNT HOSE KIT	553-554
SIDE CONSOLE KIT	555-556
STEERING KIT	557-558
SOUND OPTION	559-562
STROBE LIGHT	563-564
SUSPENSION SEAT	565-570
TIRES & RIMS	571-574
TOOL BOX	575-576
BULK ITEMS	577-578
NUMERICAL INDEX	579-650
NUMERICAL INDEX	579-650

873 CONTENTS

MAIN FRAME	12-45
MAIN FRAME	12-15
OPERATOR CAB	16-17
SEAT	18-21
SEAT BAR	22-25
SEAT	26-29
REAR DOOR	30-33
LIFT ARMS & BOBTACH	34-37
BOB-TACH	38-39
PANELS	40-41
FUEL SYSTEM	42-45
DRIVE TRAIN	46-57
DRIVE TRAIN	46-47
MOTOR CARRIER	48-49
DISC BRAKE	50-53
AXLE	54-57
HYDRAULIC CIRCUITRY	58-175
HYDRAULIC CIRCUITRY	58-97
LIFT & TILT CONTROL CIRCUITRY	98-107
AUXILIARY HYDRAULICS	108-115
TILT CYLINDER	116-131
LIFT CYLINDER	132-133
TILT LOCK VALVE	134-135
LIFT LOCK VALVE	136-137
MANUAL LIFT RELEASE VALVE	138-139
CONTROL PEDALS	140-141
HYDRAULIC CONTROL VALVE	142-163
BICS CONTROL VALVE	164-165
HYDRAULIC CONTROL VALVE (W/BICS CONTROL VALVE)	166-169
HYDRAULIC CONTROL VALVE ((AHC))	170-173
BUCKET POSITIONING VALVE	174-175
HYDROSTATIC SYSTEM	176-267
HYDROSTATIC CIRCUITRY	176-221
HAND CONTROLS	222-227
HYDROSTATIC MOTOR	228-233
HYDROSTATIC PUMP	234-257
DOUBLE GEAR PUMP	258-259
GEAR PUMP	260-261
HYDROSTATIC OIL FILTER	262-267
ELECTRICAL SYSTEM	268-301
CAB ELECTRICAL CIRCUITRY	268-275
ENGINE ELECTRICAL CIRCUITRY	276-287
ELECTRICAL CONTROLS	288-289
ELECTRICAL CONTROLS	290-295
ALTERNATOR	296-297
STARTER	298-301
POWER UNIT	302-365
COOLING SYSTEM	302-311
ENGINE & ATTACHING PARTS	312-327
THROTTLE	328-329
COOLING FAN DRIVE ASSY.	330-331
ENGINE & GASKET KITS	332-335
MANIFOLDS	336-337
CYLINDER HEAD & COVER	338-341

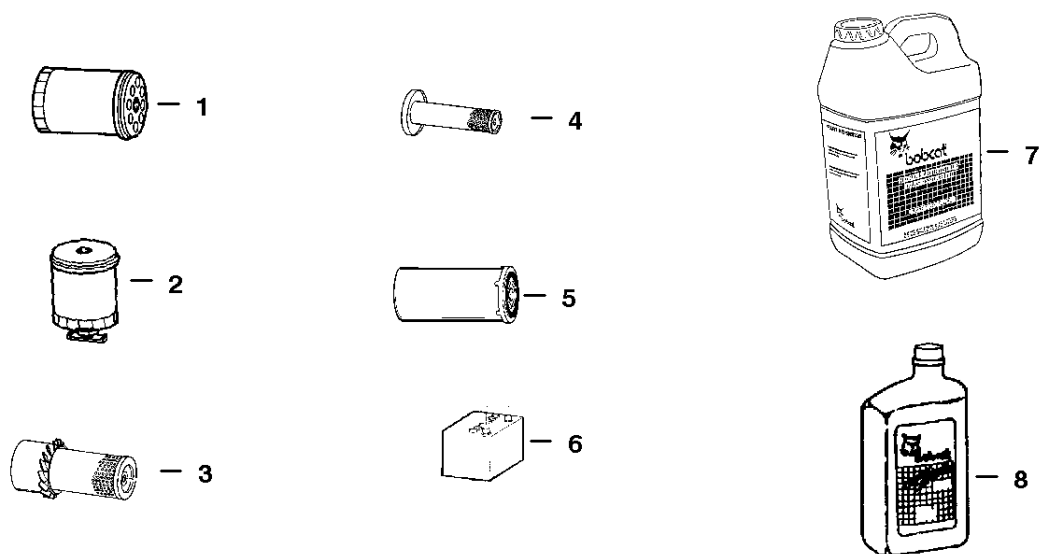
873 CONTENTS (Cont'd)

POWER UNIT (CONT'D)	302-365
CAMSHAFT	342-345
FRONT COVER	346-349
CRANKCASE & OIL PAN	350-355
PISTON & CRANKSHAFT	356-357
FUEL INJECTION SYSTEM	358-361
OIL PUMP	362-363
AIR CLEANER	364-365
ACCESSORIES & OPTIONS	369-578
ACCESS COVER	369-370
BACK-UP ALARM KIT	371-376
BEACON LIGHT	377-378
BLOCK HEATER	379-382
BRAKE KIT	383-384
BUCKET POSITIONING KIT (S/N 5141 21999 & BELOW)	385-386
BUCKET POSITION ON-OFF KIT	387-388
BUCKET POSITIONING KIT (S/N 5154 22001-39999)	389-390
BUCKET SHIELD KIT	391-392
CAB ENCLOSURE	393-394
CAB DOOR	395-398
CAB ENCLOSURE	399-402
CAB WINDOWS	403-404
COUNTERWEIGHT KIT	405-408
DEBRIS EJECTOR KIT	409-410
DECALS	411-416
ELECTRICAL CONTROLS KIT	417-420
* ELECTRICAL CONTROLS KIT	421-422
ENGINE MOUNT KITS	423-424
EUROPEAN ACCESSORIES	425-440
FLASHER LIGHTS	441-444
FRONT AUXILIARY KIT	445-460
FRONT AUXILIARY PRESSURE RELIEF KIT	461-462
GAS SPRING KIT	463-464
HAND CONTROLS KIT	465-470
* HAND CONTROL KIT	471-474
HANDLE KITS	475-476
HEATER KIT - SINGLE	477-480
HEATER - SINGLE	481-482
HEATER PLUMBING KIT - SINGLE	483-484
HEATER KIT - DUAL	485-492
HORN KIT	493-496
KEYLESS IGNITION	497-498
LIFT KIT	499-500
LIFT ARM REPLACEMENT KIT	501-502
LIGHT KIT	503-506
M46-M44 PUMP CONVERSION	507-510
PURIFIER	511-512
PUSH TO OPERATE KIT	513-516
REAR AUXILIARY	517-528
REAR AUXILIARY VALVE	529-532
REAR DOOR LOCK	533-536
REAR WIPER KIT	537-538
RENTAL KIT	539-540
SEAT BAR KIT	541-544
SEAT RAIL COVER KIT	545-546

873 CONTENTS (Cont'd)

ACCESSORIES & OPTIONS	369-578
SEAT KIT	547-548
SEAT SENSOR OVERRIDE KIT	549-552
SHUNT HOSE KIT	553-554
SIDE CONSOLE KIT	555-556
STEERING KIT	557-558
SOUND OPTION	559-562
STROBE LIGHT	563-564
SUSPENSION SEAT	565-570
TIRES & RIMS	571-574
TOOL BOX	575-576
BULK ITEMS	577-578
NUMERICAL INDEX	579-650
NUMERICAL INDEX	579-650

MAINTENANCE ITEMS **MODEL 873**



Ref.	Part Number	Description	Remarks	Page
1	6665603	ENGINE OIL FILTER (6 PACK)		350
2	6667352	FUEL FILTER ELEMENT		42
3	6666375	AIR CLEANER, OUTER		365
4	6666376	AIR CLEANER, INNER		365
5	6661248	HYDROSTATIC FILTER, # 3 MEDIA		265,267
6	6665427	BATTERY		276, 282
(HYDRAULIC RESERVOIR CAPACITY)				21 QTS. (19,9 L)
(HYDRAULIC/HYDROSTATIC SYSTEM)				13 GALS. (49,3 L)
(CHAINCASE RESERVOIR)				10 GALS. (37,9 L)
7	6563328	BLACK GOLD	Hydraulic/Hydrostatic Fluid - 5 Gallons	577
	6563330	BLACK GOLD	55 Gallon Drum	577
(ENGINE LUBRICATION/COOLING SYSTEM)				16 QTS. (15,1 L)
(ENGINE OIL W/FILTER CAPACITY)				10 QTS. (23,7 L)
8	6657299	MOTOR OIL	15W40 CE/SG -1 Qt.	577
	6724558	MOTOR OIL	15W40 CE/SG -1 Gal.	577
	6674204	MOTOR OIL	15W40 CE/SG -2.5 Gal.	577
	6657301	MOTOR OIL	10W30 CE/SG -1 Qt.	577
	6724557	MOTOR OIL	10W30 CE/SG -1 Gal.	577
	6674205	MOTOR OIL	10W30 CE/SG -2.5 Gal.	577
	6657303	MOTOR OIL	30 CE/SG -1 Qt.	577
	6724559	MOTOR OIL	30 CE/SG -1 Gal.	577
	6674206	MOTOR OIL	30 CE/SG -2.5 Gal.	577

GENERAL INFORMATION

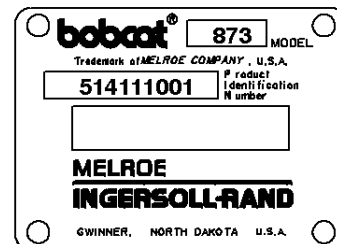
When using the machine serial number, use the complete number.

Some Serial Number breaks are not available at time of printing. These are listed as & Below or & Above.

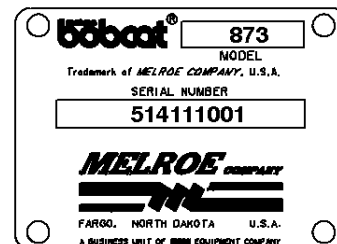
The number shown in the quantity column in this manual is the number of parts needed for the illustration on the page. For some parts an "x" will be shown in the quantity column. This "x" indicates that the quantity to be used is "As Needed".

When references L.H. and R.H. are used in this manual, it is done from the operator's seat in the forward operating position.

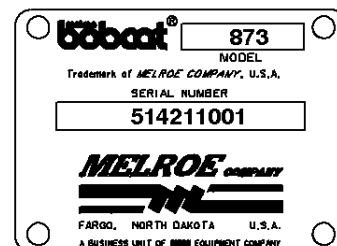
Some of the illustrations and information found in this parts manual were supplied to Bobcat by machine component companies.



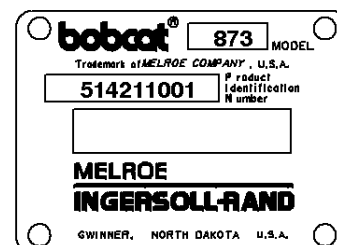
DOMESTIC



DOMESTIC



EXPORT



EXPORT

ABBREVIATIONS & SYMBOLS

- SALES = Order from Gwinner Sales Department
NSS = Not Serviced Separately
NAP = Not Available as Parts
* = Changed or Added Sections, Pages or Part Numbers

Disposition Code Definition (Found in the Remarks Column)

- [A] = Use Up
[B] = Use Up on Other Application (See PNI)
[C] = File PDR Report With Bobcat Parts Sales
[D] = Part Number Error

Explications en francais	Grid Nb	3
Erklärungen auf deutsch	Grid Nb	4
Spiegazioni in italiano	Grid Nb	5
Explicaciones en espanol	Grid Nb	6
Verklaring in het Nederlands	Grid Nb	7

NOTE D'INFORMATION

Pour toute référence au numéro de série de l'engin, toujours donner le numéro complet.

Le chiffré apparaissant dans la colonne des quantités de ce manuel représentent le nombre de pièces nécessaires pour l'illustration reprise sur la page. Dans certains cas, on lira un "x" dans la colonne des quantités. Cet "x" indique que la quantité nécessaire est "selon besoin".

Pour toute référence vers la GAUCHE ou la DROITE dans ce manuel, considérer que la personne se trouve assise dans le siège de l'opérateur, en position de fonctionnement en marche avant.

Certaines illustrations et informations reprises dans ce manuel de pièces de rechange ont été fournies à Bobcat, par des fabricants de composants.

ABBREVIATIONS & SYMBOLES

SALES	= Commander au Service Ventes à Bruxelles
NSS	= Pas vendu séparément
NAP	= Non disponible comme pièce de rechange
*	= Chapitre, page ou numéro de pièce modifié ou supplémentaire
BTI	= Bobcat Technical Information Bulletin : voir à la fin de la microfiche du modèle concerné ou la microfiche générale reprenant l'ensemble des "BTI".
was 6535403	= était avant 6535403
adj. (adjustment)	= réglage
Assembly	= ensemble
available W/Ref.	= disponible avec réf.
bulk/sold per foot	= en vrac/vendu par pied
does not include	= ne comprend pas
included with	= compris dans
I.D.	= D.I. (diamètre intérieur)
O.D.	= D.E. (diamètre extérieur)
not in kit	= pas en kit
W/ - WO/	= inclus/ - non inclus/
Qty	= quantité requise
see page/ref.	= voir page/réf.
used with ref/	= utilisé avec réf.
0,05 inch thickness	= 0,05 pouce d'épaisseur (un pouce = 25.4 mm)
weld on	= à souder

ALLGEMEINE INFORMATIONEN

Bei Angabe der Maschinen-Seriennummer stets die komplette Nummer angeben.

Bei der in der Mengenspalte (Anzahl) in diesem Handbuch angegebenen Zahl handelt es sich um die Anzahl von Teilen, die für die Abbildung auf der betreffenden Seite benötigt werden. Bei manchen Teilen in der Mengenspalte ist ein "x" angegeben. Dieses "x" weist darauf hin, dass sich die Anzahl der verwendeten Teile auf den "Bedarf" bezieht.

Bei Verwendung der Seitenangaben links und rechts in diesem Handbuch gelten diese für die Blickrichtung vom Fahrersitz aus, und zwar in Vorwärts-Betriebsrichtung.

Einige der in diesem Ersatzteillandbuch aufgeführten Abbildungen und Informationen wurden der Bobcat, von den Herstellern von Maschinenbauteilen zur Verfügung gestellt.

ABKÜRZUNGEN UND SYMBOLE

SALES	= Bestellung bei der Verkaufsabteilung in Brüssel
NSS	= Nicht einzeln erhältlich
NAP	= Nicht als Ersatzteil erhältlich
*	= Geänderte oder hinzugefügte Abschnitte, Seiten oder Teilenummern
BTI	= Bobcat Technical Information Bulletin : Siehe am Ende der Mikrokarte des jeweiligen Modells oder der allgemeinen Mikrokarte der BTI.
was 6535403	= War 6535403
adj.	= Einstellung
Assembly	= Baugruppe
available W/Ref.	= erhältlich mit der Referenz
bulk/sold per foot	= Mengenabnahme / Verkauf pro Fuss
does not include	= beinhaltet nicht
included with	= enthalten in
I.D.	= Innendurchmesser
O.D.	= Aussendurchmesser
not in kit	= nicht in Bausatz
W/ - WO/	= mit/ - ohne/
Qty	= Anzahl
see page/ref.	= Siehe Seite / Referenz
used with ref.	= verwendet mit Referenz
0.05 inch thickness	= Dicke : 0.05 Zoll (ein Zoll = 25.4 mm)
weld on	= anschweißen

INFORMAZIONI GENERALI

Quando si usa il numero di serie della macchina usare il numero completo.

Il numero mostrato nella colonna della quantità di questo manuale corrisponde al numero di componenti necessari per l'illustrazione della pagina. Per alcuni componenti appare "X" nella colonna delle quantità. Questa "X" indica che la quantità da usare è "come necessario".

See in questo manuale si fa riferimento alla parte destra o sinistra, si intende dal sedile dell'operatore nella posizione in avanti di funzionamento.

Alcune delle illustrazioni e informazioni trovate in questo manuale di componenti sono state fornite alla Bobcat, da società di componenti di macchine.

SIMBOLI E ABBREVIAZIONI

SALES	= Ordinare al servizio vendite di Bruxelles
NSS	= Non vendute separatamente
NAP	= Non disponibile come componente
*	= Sezioni, pagine o numeri di componente cambiati o aggiunti
BTI	= (Bobcat Technical information) Ved. al termine del microfiche del modello relativo oppure microfiche generale
was 6535403	= era 6535403
adj. (adjustment)	= regol. (regolazione)
Assembly	= Complessivo
available W/Ref.	= disponibile con rif.
bulk/sold per foot	= alla rinfusa/venduto al piede
does not include	= non comprende
Included with	= compreso con
I.D.	= d. i.
O.D.	= d. e.
not in kit	= non fa parte del kit
W/ - WO/	= con - senza
Qty	= Qtà
see page/ref	= ved. pagina/rif.
used with ref.	= usato con il rif.
0,05 inch thickness	= spessore 0,05 pollici (un pollice = 25,4 mm)
weld on	= a saldare

INFORMACION GENERAL

Al utilizar el número de serie de la máquina, debe emplearse el número completo.

El número que figura en la columna de "Unidades" en este manual es el número de piezas que se necesitan para la ilustración que consta en la página. En algunas piezas aparece una "x" en la columna de "Unidades". Esta "x" indica que las unidades a utilizar son "según sea necesario".

Cuando se empleen las referencias izq. y dcha., éstas se entienden mirando desde el asiento del conductor, en posición de marcha adelante.

Algunas de las ilustraciones y la información que figuran en este manual de piezas han sido facilitadas a Bobcat, por empresas de componentes de máquinas.

ABREVIATURAS Y SIMBOLOS

VENTAS	= Pedido al Departamento de Ventas de Bruselas
NSS	= No se vende por separado
NAP	= No disponible como pieza de repuesto
*	= Secciones, páginas o referencias modificadas o añadidas
BTI	= (Bobcat Technical Information) Ver al final de la microficha del modelo afectado o en la microficha general "Boletín de Información Técnica Bobcat".
was 6535403	= era anteriormente el 6535403
adj. (adjustment)	= ajuste
assembly	= conjunto
available W/Ref.	= disponible con la ref.
bulk/sold per foot	= a granel/vendido por pies
does not include	= no incluye
included with	= incluido en
I.D.	= diámetro interior
O.D.	= diámetro exterior
not in kit	= no en el kit
W/ - WO/	= con/ - sin
Qty	= Unidades
see page /ref.	= ver página/ref.
used with ref.	= empleado con la ref.
0,05 inch thickness	= 0,05 pulgadas de espesor (1 pulgada = 25,4 mm)
weld on	= debe ser soldado

Thank you so much for reading.
Please click the “Buy Now!”
button below to download the
complete manual.



After you pay.

You can download the most
perfect and complete manual in
the world immediately.

Our support email:

ebooklibonline@outlook.com