

TRENCHERS
TRENCH
COMPACTORS
VIBRATORY
ROLLER

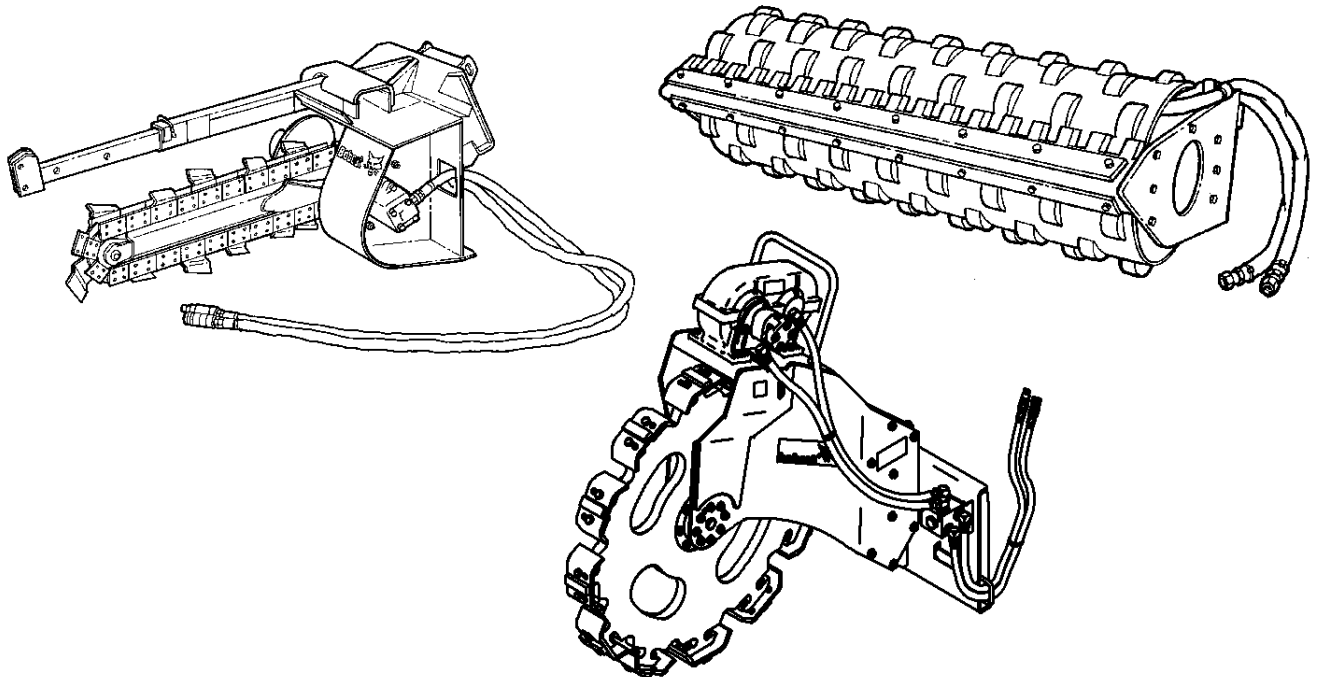


Bobcat®

VOLUME 6

Attachments

Parts **Manual**



VOLUME INDEX

<p style="text-align: center;">VOLUME 1 Contains</p>	<p style="text-align: center;">VOLUME 7 Contains</p> <p>CHIPPER CONCRETE MIXER CONCRETE PUMP</p> <p style="text-align: center;">(P/N 6901469)</p>
<p style="text-align: center;">VOLUME 2 Contains</p> <p>AUGERS BREAKERS CUTTER CRUSHER (P/N 6901459)</p>	<p style="text-align: center;">VOLUME 8 Contains</p>
<p style="text-align: center;">VOLUME 3 Contains</p> <p>ANGLE BROOMS, SWEEPERS, GUTTER BRUSH, WHISKER BROOM GRADERS, WATER KITS (P/N 6901461)</p>	<p style="text-align: center;">VOLUME 9 Contains</p>
<p style="text-align: center;">VOLUME 4 Contains</p> <p>PLANERS WHEEL SAWS</p> <p style="text-align: center;">(P/N 6901463)</p>	<p style="text-align: center;">VOLUME 10 Contains</p> <p>VERSAHANDLER ATTACHMENTS: AUGER, BROOM, BUCKETS, GRAPPLES, PALLET FORKS & BOOM TRUSS</p> <p style="text-align: center;">(P/N 6901407)</p>
<p style="text-align: center;">VOLUME 5 Contains</p> <p>BUCKETS, COMBO BUCKETS, BUCKET BITE & RAKE, DIGGERS, DUMPING HOPPER, EJECTOR BUCKET, GRAPPLES UTILITY FORKS, PALLET FORKS, TILT- TATCH, UTILITY FRAMES, WEIGHLOG (P/N 6901465)</p>	
<p style="text-align: center;">VOLUME 6 Contains</p> <p>TRENCHERS TRENCH COMPACTORS VIBRATORY ROLLER</p> <p style="text-align: center;">(P/N 6901467)</p>	

VOLUME 6 CONTENTS

TRENCHERS	11-302
LOADER X-CHANGE FRAME	11-12
LOADER MOUNTING FRAME	13-14
EXCAVATOR MOUNTING FRAME	15-16
DIGGING GROUP	17-20
HYDRAULIC CIRCUITRY	21-22
HYDROSTATIC MOTOR	23-26
TRENCH CLEANER	27-28
CHAINS & TEETH	29-30
CHAIN REPAIR PARTS	31-32
LT112 TRENCHER	33-36
MX112 TRENCHER	37-40
HYDROSTATIC MOTOR - LT112 & MX112 TRENCHER	41-42
LT112 & MX112 TRENCHER - CHAIN & TOOTH ASSY	43-48
SPACER KIT - LT112 & MX112 TRENCHER	49-50
TOOTH KITS - LT112 & MX112 TRENCHER	51-52
TRENCHER MOUNT FRAME - LT203 TRENCHER	53-54
DIGGING GROUP - LT203 TRENCHER	55-56
HYDRAULIC CIRCUITRY - LT203 TRENCHER	57-58
SIDE SHIFT KIT - LT203 TRENCHER	59-60
CYLINDER - LT203 TRENCHER	61-62
HYDROSTATIC MOTOR - LT203 TRENCHER	63-64
TRENCH CLEANER - LT203 TRENCHER	65-66
VALVE - LT203 TRENCHER	67-68
SPACER KIT - LT203 TRENCHER	69-70
CHAINS & TEETH - LT203 TRENCHER	71-72
CHAIN REPAIR PARTS - LT203 TRENCHER	73-74
TRENCHER MOUNT FRAME - LT204 TRENCHER	75-76
DIGGING GROUP - LT204 TRENCHER	77-80
HYDRAULIC CIRCUITRY - LT204 TRENCHER	81-82
BOOM CYLINDER - LT204 TRENCHER	83-84
HYDROSTATIC MOTOR - LT204 TRENCHER	85-86
TRENCH CLEANER - LT204 TRENCHER	87-88
SPACER KIT - LT204 TRENCHER	89-90
VALVE - LT204 TRENCHER	91-92
CHAINS & TEETH - LT204 TRENCHER	93-94
CHAIN REPAIR PARTS - LT204 TRENCHER	95-96
LT213 TRENCHER	97-100
HYDROSTATIC MOTOR - LT213 TRENCHER	101-102
SIDE SHIFT KIT - LT213 & LT313 TRENCHER	103-104
SIDE SHIFT CYLINDER - LT213 & LT313 TRENCHER	105-106
SIDE SHIFT SELECTOR VALVE - LT213 & LT313 TRENCHER	107-108
LT213 TRENCHER - CHAIN & TOOTH ASSY	109-116
SPACER KIT - LT213 TRENCHER	117-118
TOOTH KITS - LT213 TRENCHER	119-120
MAIN FRAME & HYDRAULICS - LT303 TRENCHER	121-122
DIGGING GROUP - LT303 TRENCHER	123-124
HYDRAULIC MOTOR - LT303 TRENCHER	125-126
SIDE SHIFT KIT - LT303 TRENCHER	127-128
SIDE SHIFT CYLINDER - LT303 TRENCHER	129-130
VALVE - LT303 TRENCHER	131-132
CUP TOOTH KIT - LT303 TRENCHER	133-136
CUP/CARBIDE TOOTH KIT - LT303 TRENCHER	137-140
CUP TOOTH KIT - LT303 TRENCHER	141-144
SPACER KIT - LT303 TRENCHER	145-150
MAIN FRAME & HYDRAULICS - LT304 TRENCHER	151-152
SIDE SHIFT KIT - LT304 TRENCHER	153-154
DIGGING GROUP - LT304 TRENCHER	155-156
HYDRAULIC MOTOR - LT304 TRENCHER	157-158
SIDE SHIFT CYLINDER - LT304 TRENCHER	159-160
VALVE - LT304 TRENCHER	161-162
CUP TOOTH KIT - LT304 TRENCHER	163-166
CUP/CARBIDE TOOTH KIT - LT304 TRENCHER	167-170
CUP TOOTH KIT - LT304 TRENCHER	171-174
SPACER KIT - LT304 TRENCHER	175-180
LT313 TRENCHER - MAIN FRAME & BOOM	181-182

VOLUME 6 CONTENTS (Cont'd)

TRENCHERS (CONT'D)	11-302
LT313 TRENCHER - DIGGING GROUP	183-184
HYDRAULIC MOTOR - LT313 TRENCHER	185-186
SIDE SHIFT KIT - LT313 TRENCHER	187-188
SIDE SHIFT CYLINDER - LT312 & LT313 TRENCHER	189-190
SIDE SHIFT SELECTOR VALVE - LT313 TRENCHER	191-192
CUP TOOTH KIT - LT313 TRENCHER	193-196
CUP/CARBIDE TOOTH KIT - LT313 TRENCHER	197-200
CUP TOOTH KIT - LT313 TRENCHER	201-204
SPACER KIT - LT313 TRENCHER	205-210
CHAIN ASSY - LT313 TRENCHER	211-214
LT313 TRENCHER - CHAIN & TOOTH ASSY	215-218
TRENCHER MOUNTING FRAME - LT305 TRENCHER	219-220
TRENCHER ATTACHMENT - LT305 TRENCHER	221-224
HEADDRIVE ASSEMBLY - LT305 TRENCHER	225-226
CARRIER ASSEMBLY - LT305 TRENCHER	227-228
BOBTACH CYLINDER - LT305 TRENCHER	229-230
HYDRAUSTATIC MOTOR - LT305 TRENCHER	231-232
TRENCHER HYDRAULIC KIT - LT305 TRENCHER	233-236
4 FT. CHAIN GUIDES - LT305 TRENCHER	237-238
5 FT. CHAIN GUIDES - LT305 TRENCHER	239-240
BIGWHEEL KIT - LT305 TRENCHER	241-242
5 FT. BOOM EXTENSION KIT - LT305 TRENCHER	243-244
CHAINS & TEETH - LT305 TRENCHER	245-248
CHAIN REPAIR PARTS - LT305 TRENCHER	249-250
TOOTH KITS - LT305 TRENCHER	251-252
TRENCH CLEANER - LT305 TRENCHER	253-254
TRENCHER MOUNTING FRAME - LT405 TRENCHER (SN 705100101 & ABOVE)	255-256
DIGGING GROUP - LT405 TRENCHER (SN 705100101 & ABOVE)	257-260
HYDRAULIC CIRCUITRY - LT405 TRENCHER (SN 705100101 & ABOVE)	261-262
MOTOR - LT405 TRENCHER (SN 705100101 & ABOVE)	263-266
TRENCHER MOUNTING FRAME - LT405 TRENCHER (SN 610000101 & ABOVE)	267-268
DIGGING GROUP - LT405 TRENCHER (SN 610000101 & ABOVE)	269-272
HYDRAULIC CIRCUITRY - LT405 TRENCHER (SN 610000101 & ABOVE)	273-274
MOTOR - LT405 TRENCHER (SN 610000101 & ABOVE)	275-276
CARRIER ASSY - LT405 TRENCHER (SN 610000101 & ABOVE)	277-278
VALVE - LT405 TRENCHER	279-280
SIDESHIFT CYLINDER - LT405 TRENCHER	281-282
5 FT. CHAIN GUIDES - LT405 TRENCHER	283-284
CHAINS - LT405 TRENCHER	285-286
SPACER KIT - LT405 TRENCHER	287-288
CHAIN REPAIR PARTS - LT405 TRENCHER	289-290
TOOTH KITS - LT405 TRENCHER	291-292
CARBIDE MTG. KIT - LT405 TRENCHER	293-294
CRUMBER KIT - LT405 TRENCHER	295-298
AUGER KIT - LT405 TRENCHER	299-300
ATTACHMENTS PLUS KIT	301-302
TRENCH COMPACTORS	303-340
TRENCH COMPACTOR	303-306
HYDRAULIC MOTOR	307-310
VALVE	311-314
VIBRATOR	315-316
WHEEL GROUP	317-318
VIBRATING GROUP	319-322
HOUSING & TILT FRAME	323-324
BOBTACH FRAME	325-326
HYDRAULIC SYSTEM	327-332
TILT CYLINDER	333-334
DEPTH CONTROL CYLINDER	335-336
SIDE SHIFT CYLINDER	337-338
CONTROL VALVE	339-340
VIBRATORY ROLLERS	341-380
48" VIBRATORY ROLLER	341-348
HYDRAULIC MOTOR	349-350
HYDRAULIC CUSHION VALVE	351-352
COUPLER	353-354

VOLUME 6 CONTENTS (Cont'd)

VIBRATORY ROLLERS (CONT'D)	341-380
72" VIBRATORY ROLLER	355-358
HYDRAULIC MOTOR	359-360
HYDRAULIC CUSHION VALVE	361-362
VIBRATORY PLOW	363-380
NUMERICAL INDEX	381-406
NUMERICAL INDEX	381-406

GENERAL INFORMATION

When using the machine serial number, use the complete number.

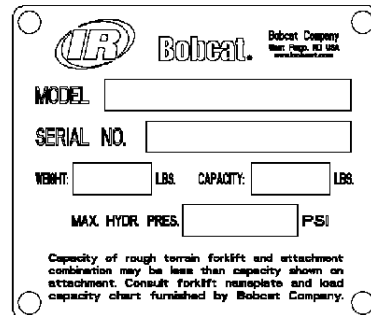
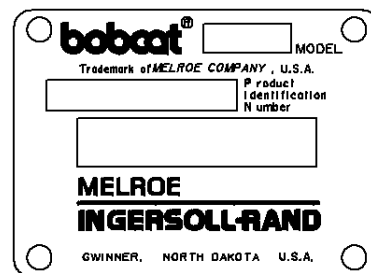
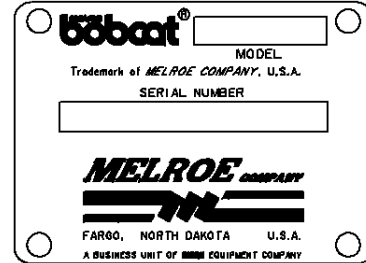
Some Serial Number breaks are not available at time of printing. These are listed as & Below or & Above.

The number shown in the quantity column in this manual is the number of parts needed for the illustration on the page. For some parts an "x" will be shown in the quantity column. This "x" indicates that the quantity to be used is "As Needed".

When references L.H. and R.H. are used in this manual, it is done from the operator's seat in the forward operating position.

To find the size and kind of bolt use the Bobcat Standard Microfiche (P/N 6566077).

Some of the illustrations and information found in this parts manual were supplied to Bobcat Company by machine component companies.



ABBREVIATIONS & SYMBOLS

SALES = Order from Gwinner Sales Department

NSS = Not Serviced Separately

NAP = Not Available as Parts

*** = Changed or Added Sections, Pages or Part Numbers**

Disposition Code Definition (Found in the Remarks Column)

[A] = Use Up

[B] = Use Up on Other Applications (See PNI)

[C] = File PDR Report With Bobcat Parts Sales

[D] = Part Number Error

Explications en francais	Grid Nb	3
Erklärungen auf deutsch	Grid Nb	4
Spiegazioni in italiano	Grid Nb	5
Explicaciones en espanol	Grid Nb	6
Verklaring in het Nederlands	Grid Nb	7

NOTE D'INFORMATION

Pour toute référence au numéro de série de l'engin, toujours donner le numéro complet.

Le chiffré apparaissant dans la colonne des quantités de ce manuel représentent le nombre de pièces nécessaires pour l'illustration reprise sur la page. Dans certains cas, on lira un "x" dans la colonne des quantités. Cet "x" indique que la quantité nécessaire est "selon besoin".

Pour toute référence vers la GAUCHE ou la DROITE dans ce manuel, considérer que la personne se trouve assise dans le siège de l'opérateur, en position de fonctionnement en marche avant.

Certaines illustrations et informations reprises dans ce manuel de pièces de rechange ont été fournies à Bobcat Company, par des fabricants de composants.

ABREVIATIONS & SYMBOLES

SALES	= Commander au Service Ventes à Bruxelles
NSS	= Pas vendu séparément
NAP	= Non disponible comme pièce de rechange
*	= Chapitre, page ou numéro de pièce modifié ou supplémentaire
BTI	= Bobcat Technical Information Bulletin : voir à la fin de la microfiché du modèle concerné ou la microfiche générale reprenant l'ensemble des "BTI".
was 6535403	= était avant 6535403
adj. (adjustment)	= réglage
Assembly	= ensemble
available W/Ref.	= disponible avec réf.
bulk/sold per foot	= en vrac/vendu par pied
does not include	= ne comprend pas
included with	= compris dans
I.D.	= D.I. (diamètre intérieur)
O.D.	= D.E. (diamètre extérieur)
not in kit	= pas en kit
W/ - WO/	= inclus/ - non inclus/
Qty	= quantité requise
see page/ref.	= voir page/réf.
used with ref/	= utilisé avec réf.
0,05 inch thickness	= 0,05 pouce d'épaisseur (un pouce = 25.4 mm)
weld on	= à souder

ALLGEMEINE INFORMATIONEN

Bei Angabe der Maschinen-Seriennummer stets die komplette Nummer angeben.

Bei der in der Mengenspalte (Anzahl) in diesem Handbuch angegebenen Zahl handelt es sich um die Anzahl von Teilen, die für die Abbildung auf der betreffenden Seite benötigt werden. Bei manchen Teilen in der Mengenspalte ist ein "x" angegeben. Dieses "x" weist darauf hin, dass sich die Anzahl der verwendeten Teile auf den "Bedarf" bezieht.

Bei Verwendung der Seitenangaben links und rechts in diesem Handbuch gelten diese für die Blickrichtung vom Fahrersitz aus, und zwar in Vorwärts-Betriebsrichtung.

Einige der in diesem Ersatzteilhandbuch aufgeführten Abbildungen und Informationen wurden der Bobcat Company, von den Herstellern von Maschinenbauteilen zur Verfügung gestellt.

ABKÜRZUNGEN UND SYMBOLE

SALES	= Bestellung bei der Verkaufsabteilung in Brüssel
NSS	= Nicht einzeln erhältlich
NAP	= Nicht als Ersatzteil erhältlich
*	= Geänderte oder hinzugefügte Abschnitte, Seiten oder Teilenummern
BTI	= Bobcat Technical Information Bulletin : Siehe am Ende der Mikrokarte des jeweiligen Modells oder der allgemeinen Mikrokarte der BTI.
was 6535403	= War 6535403
adj.	= Einstellung
Assembly	= Baugruppe
available W/Ref.	= erhältlich mit der Referenz
bulk/sold per foot	= Mengenabnahme / Verkauf pro Fuss
does not include	= beinhaltet nicht
included with	= enthalten in
I.D.	= Innendurchmesser
O.D.	= Aussendurchmesser
not in kit	= nicht in Bausatz
W/ - WO/	= mit/ - ohne/
Qty	= Anzahl
see page/ref.	= Siehe Seite / Referenz
used with ref.	= verwendet mit Referenz
0.05 inch thickness	= Dicke : 0.05 Zoll (ein Zoll = 25.4 mm)
weld on	= anschweißen

INFORMAZIONI GENERALI

Quando si usa il numero di serie della macchina usare il numero completo.

Il numero mostrato nella colonna della quantità di questo manuale corrisponde al numero di componenti necessari per l'illustrazione della pagina. Per alcuni componenti appare "X" nella colonna delle quantità. Questa "X" indica che la quantità da usare è "come necessario".

See in questo manuale si fa riferimento alla parte destra o sinistra, si intende dal sedile dell'operatore nella posizione in avanti di funzionamento.

Alcune delle illustrazioni e informazioni trovate in questo manuale di componenti sono state fornite alla Bobcat Company, da società di componenti di macchine.

SIMBOLI E ABBREVIAZIONI

SALES	= Ordinare al servizio vendite di Bruxelles
NSS	= Non vendute separatamente
NAP	= Non disponibile come componente
*	= Sezioni, pagine o numeri di componente cambiati o aggiunti
BTI	= (Bobcat Technical information) Ved. al termine del microfiche del modello relativo oppure microfiche generale
was 6535403	= era 6535403
adj. (adjustment)	= regol. (regolazione)
Assembly	= Complessivo
available W/ref.	= disponibile con rif.
bulk/sold per foot	= alla rinfusa/venduto al piede
does not include	= non comprende
Included with	= compreso con
I.D.	= d. i.
O.D.	= d. e.
not in kit	= non fa parte del kit
W/ - WO/	= con - senza
Qty	= Qtà
see page/ref	= ved. pagina/rif.
used with ref.	= usato con il rif.
0,05 inch thickness	= spessore 0,05 pollici (un pollice = 25,4 mm)
weld on	= a saldare

Buy Now



Our support email:

ebooklibonline@outlook.com