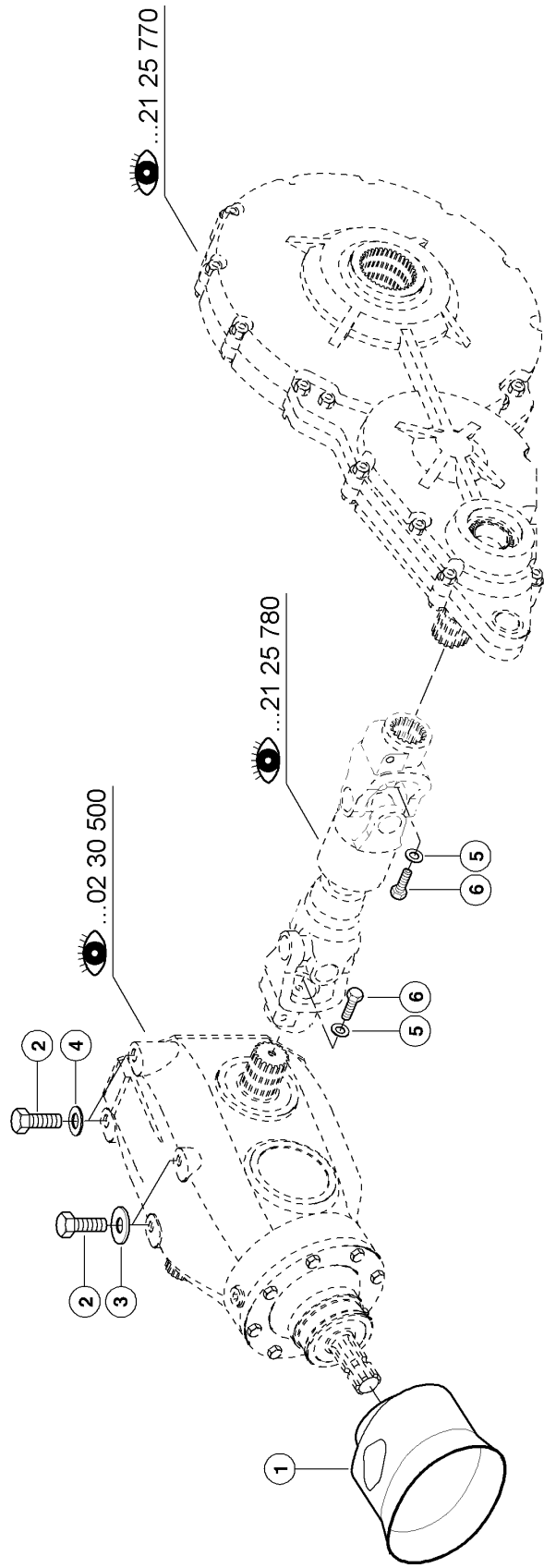


E0118 0230A500A 1

**500 MAIN GEARBOX**

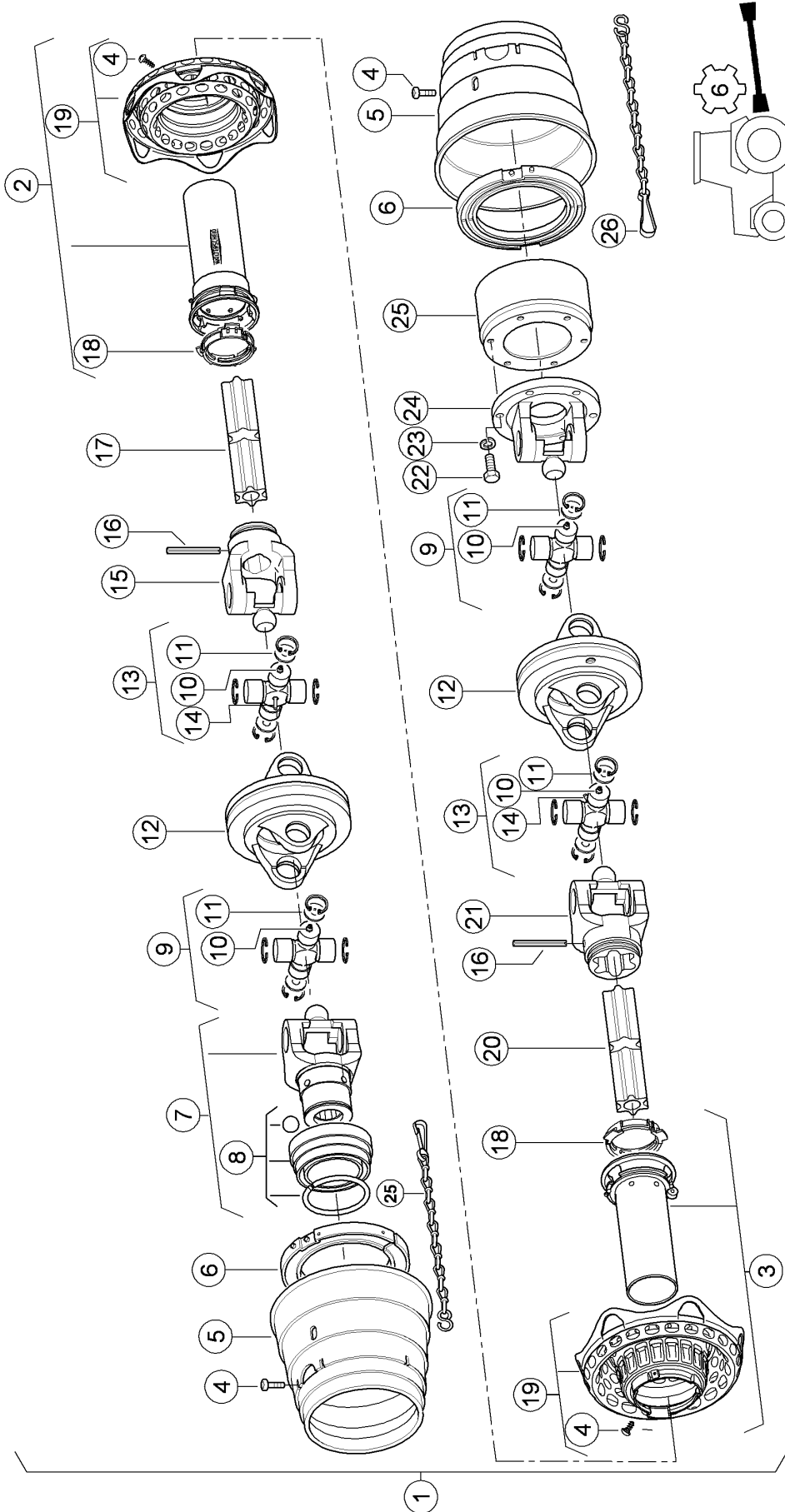
Pos.	Part No.	Description	Dimension	Quantity	Conditions
1	<b>00 0973 300 0</b>	MAIN GEARBOX	1000 U/MIN	1	
2	<b>00 0213 902 0</b>	SHAFT SEAL	AS 55X100X10	1	
3	<b>00 0235 193 0</b>	CIRCLIP	100X3	1	
4	<b>00 0213 898 0</b>	SHIM	90X100X0,50	3	
4	<b>00 0213 899 0</b>	SHIM	90X100X0,3	1	
4	<b>00 0213 900 0</b>	SHIM	90X100X0,10	1	
5	<b>00 0234 830 0</b>	TA.ROLLER BEARING	30211	1	
6	<b>00 0920 123 0</b>	BREATHER PLUG	0,03-0,05BAR-M16X1, 5-TYP	1	
7	<b>00 0238 183 0</b>	SEALING RING	A16 X20	2	
8	<b>00 0920 116 0</b>	HOUSING		1	
9	<b>00 0243 047 0</b>	CIRCLIP	78X2,5	2	
10	<b>00 0920 122 0</b>	SPUR GEAR	Z=33	1	
11	<b>00 0920 117 0</b>	COVER		1	
12	<b>00 0239 387 0</b>	CONTACT WASHER	A8-8,2X18X1,4	12	
13	<b>00 0236 200 0</b>	HEXAGON HEAD BOLT	M8X20	12	
14	<b>00 0244 842 0</b>	SEALING RING	A10 X14	1	
15	<b>00 0237 570 0</b>	HEXAGON HEAD BOLT	M10X16	1	
16	<b>00 0920 118 0</b>	SHAFT		1	
17	<b>00 0243 661 0</b>	TA.ROLLER BEARING	30212A	1	
18	<b>00 0211 966 0</b>	SHIM	100X110X1	1	
18	<b>00 0211 965 0</b>	SHIM	100X110X0,5	1	
18	<b>00 0211 964 0</b>	SHIM	100X110X0,3	1	
18	<b>00 0211 963 0</b>	SHIM	100X110X0,1	2	
19	<b>00 0235 194 0</b>	CIRCLIP	110X4	1	
20	<b>00 0214 586 0</b>	SHAFT SEAL	AS 60X110X10	1	
21	<b>00 0212 633 0</b>	ROTARY SHAFT SEAL	AS 45X90X10	1	
22	<b>00 0179 845 0</b>	SLOTTED NUT	M50X1,5	1	
23	<b>00 0235 989 0</b>	TA.ROLLER BEARING	30210 - 50X90X21,75	1	
24	<b>00 0939 671 0</b>	HUB		1	
25	<b>00 0940 636 0</b>	SHIM	DICKE 0,19	1	
25	<b>00 0940 637 0</b>	SHIM	DICKE 0,25	1	
25	<b>00 0940 638 0</b>	SHIM	DICKE 0,35	1	
26	<b>00 0215 148 0</b>	TA.ROLLER BEARING	33211/Q	1	
27	<b>00 0935 020 0</b>	LOCKING COVER	130X 12	1	
28	<b>00 0243 065 0</b>	CIRCLIP	130X4	1	
29	<b>00 0215 931 0</b>	SHIM	112X130X1	1	
29	<b>00 0215 798 1</b>	SHIM	112X130X0,5	1	
30	<b>00 0213 223 0</b>	TA.ROLLER BEARING	303 12	1	
31	<b>00 0237 572 0</b>	HEXAGON HEAD BOLT	M12X35	8	
32	<b>00 0920 121 0</b>	BEVEL GEAR SET	I=2,23;1	1	
33	<b>00 0933 644 0</b>	MAGNETIC FILTER BOLT	M16X1,5-PM	1	
34	<b>00 0213 904 0</b>	PARALLEL KEY	AB20X12X 56	1	
35	<b>00 0920 119 0</b>	SPUR GEAR SHAFT	Z=13	1	
36	<b>00 0243 675 0</b>	TA.ROLLER BEARING	32213-65X120X32,75	1	
37	<b>00 0214 182 0</b>	SHIM	110X120X1,0 ERS.D.214182	1	
37	<b>00 0214 180 0</b>	SHIM	110X120X0,3 ERS.D. 21418	1	
37	<b>00 0214 181 0</b>	SHIM	110X120X0,5 ERS.D. 21418	1	
37	<b>00 0214 179 0</b>	SHIM	110X120X0,1 ERS.D. 21417	3	
38	<b>00 0243 063 0</b>	CIRCLIP	120X4	1	
39	<b>00 0213 903 0</b>	LOCKING-COVER	VK 120X12	1	



E0118 0230A700A 1

**700 FASTENINGS / ATTACHMENT PARTS**

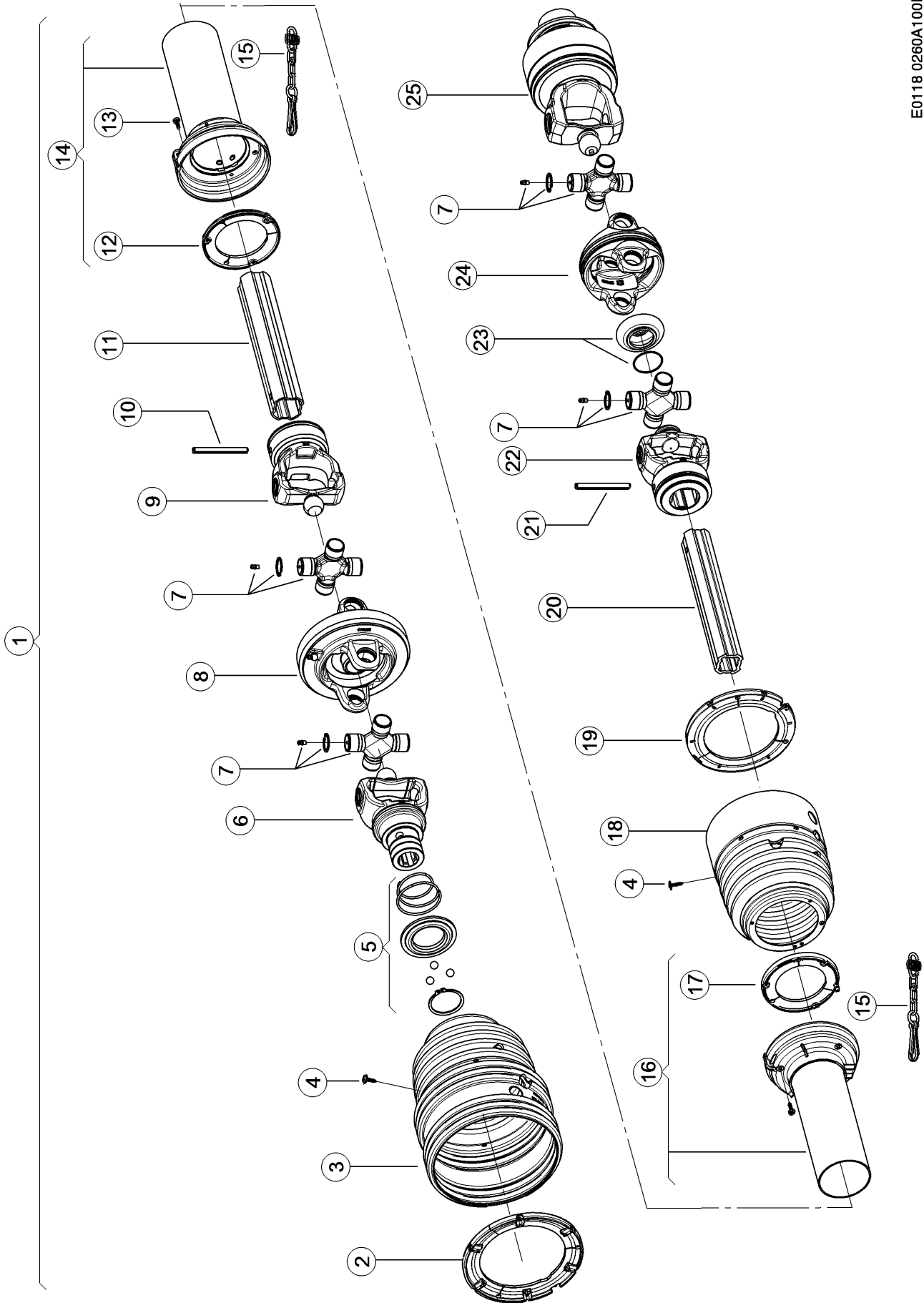
<b>Pos.</b>	<b>Part No.</b>	<b>Description</b>	<b>Dimension</b>	<b>Quantity</b>	<b>Conditions</b>
1	<b>00 0963 402 0</b>	GUARD CUP		1	
2	<b>00 0238 952 0</b>	HEXAGON HEAD BOLT	M16X45-MKL	4	
3	<b>00 0233 325 0</b>	WASHER	17X50X4	2	
4	<b>00 0212 191 0</b>	CONTACT WASHER	A20	2	
5	<b>00 0239 389 0</b>	CONTACT WASHER	A12	2	
6	<b>00 0239 160 0</b>	HEXAGON HEAD BOLT	M12X35-MKL	2	



E0118 0260A100A 1

**100 DRIVE SHAFT, MAIN DRIVE 1)**

Pos.	Part No.	Description	Dimension	Quantity	Conditions
1	<b>00 1317 190 0</b>	UNIV.DRIVE SHAFT		1	
2	<b>00 0139 425 0</b>	OUTER GUARD HALF		1	
3	<b>00 0139 426 0</b>	INNER GUARD		1	
4	<b>00 0850 548 0</b>	SCREW		4	
5	<b>00 0139 186 0</b>	PROTECT.FUNNEL		2	
6	<b>00 0817 313 0</b>	GLIDE RING		2	
7	<b>00 0863 029 0</b>	FORK		1	
8	<b>00 0933 017 0</b>	LOCK		1	
9	<b>00 0859 849 0</b>	CENTRE CROSS ASS.		2	
10	<b>00 0219 880 0</b>	GREASE NIPPLE	A M6X1-GEW.-LAENGE =3,5	1	
11	<b>00 0817 317 0</b>	WASHER		4	
12	<b>00 0859 850 0</b>	DOUBLE FORK		2	
13	<b>00 0859 851 0</b>	CENTRE CROSS ASS.		2	
14	<b>00 0817 783 0</b>	GREASE NIPPLE		1	
15	<b>00 0859 852 0</b>	FORK		1	
16	<b>00 0213 688 1</b>	SPRING PIN	10 X 90	2	
17	<b>00 0138 360 0</b>	PROFILE TUBE		1	
18	<b>00 0920 671 0</b>	GLIDE RING		1	
19	<b>00 0139 031 0</b>	PROTECT.FUNNEL		1	
20	<b>00 0138 353 0</b>	PROFILE TUBE		1	
21	<b>00 0863 008 0</b>	FORK		1	
22	<b>00 0237 461 0</b>	HEXAGON HEAD BOLT	M12X30	6	
23	<b>00 0235 134 1</b>	SPRING WASHER	12	6	
24	<b>00 0148 559 0</b>	FLANGE FORKE		1	
25	<b>00 0148 560 0</b>	CAM DISK		1	
<b>1) Equipment</b>					
<b>machine no.</b>	LW_M04_0040	Double-wide-angle PTO drive shaft, 6-spline + up to 99001238			



E0118 0260A100B 1

**100 DRIVE SHAFT, MAIN DRIVE 1)**

Pos.	Part No.	Description	Dimension	Quantity	Conditions
1	<b>00 1322 065 0</b>	DRIVE SHAFT		1	
2	<b>00 0151 046 0</b>	RING		1	
3	<b>00 0151 045 0</b>	PROTECT.FUNNEL		1	
4	<b>00 0214 631 0</b>	FILL.HEAD SCREW	ST4,8X22-C-H	12	
5	<b>00 0151 047 0</b>	DISCONNECT LOCK		1	
5	<b>00 0151 058 0</b>	DISCONNECT LOCK		1	
6	<b>00 0151 038 0</b>	OUTER FORK		1	
6	<b>00 1325 280 0</b>	FORK		1	
7	<b>00 0151 039 0</b>	CENTRE CROSS ASS.		4	
8	<b>00 0151 041 0</b>	DOUBLE FORK		1	
9	<b>00 0151 040 0</b>	INNER FORK		1	
10	<b>00 0233 750 0</b>	SPRING PIN	10 X 95	1	
11	<b>00 0139 042 0</b>	PROFILE TUBE		1	
12	<b>00 0138 198 0</b>	RING		1	
13	<b>00 0214 631 0</b>	FILL.HEAD SCREW	ST4,8X22-C-H	6	
14	<b>00 0138 177 0</b>	PROTECTIVE TUBE		1	
15	<b>00 0148 626 0</b>	SUPPORTING CHAIN		2	
16	<b>00 0138 185 0</b>	PROTECTIVE TUBE		1	
17	<b>00 0138 199 0</b>	RING		1	
18	<b>00 0139 084 0</b>	PROTECT.FUNNEL		1	
19	<b>00 0844 557 0</b>	RING		1	
20	<b>00 0139 050 0</b>	PROFILE TUBE		1	
21	<b>00 0233 750 0</b>	SPRING PIN	10 X 95	1	
22	<b>00 0151 043 0</b>	INNER FORK		1	
23	<b>00 0139 083 0</b>	GASKET		1	
24	<b>00 0151 042 0</b>	DOUBLE FORK		1	
25	<b>00 0151 044 0</b>	CAM DISK		1	

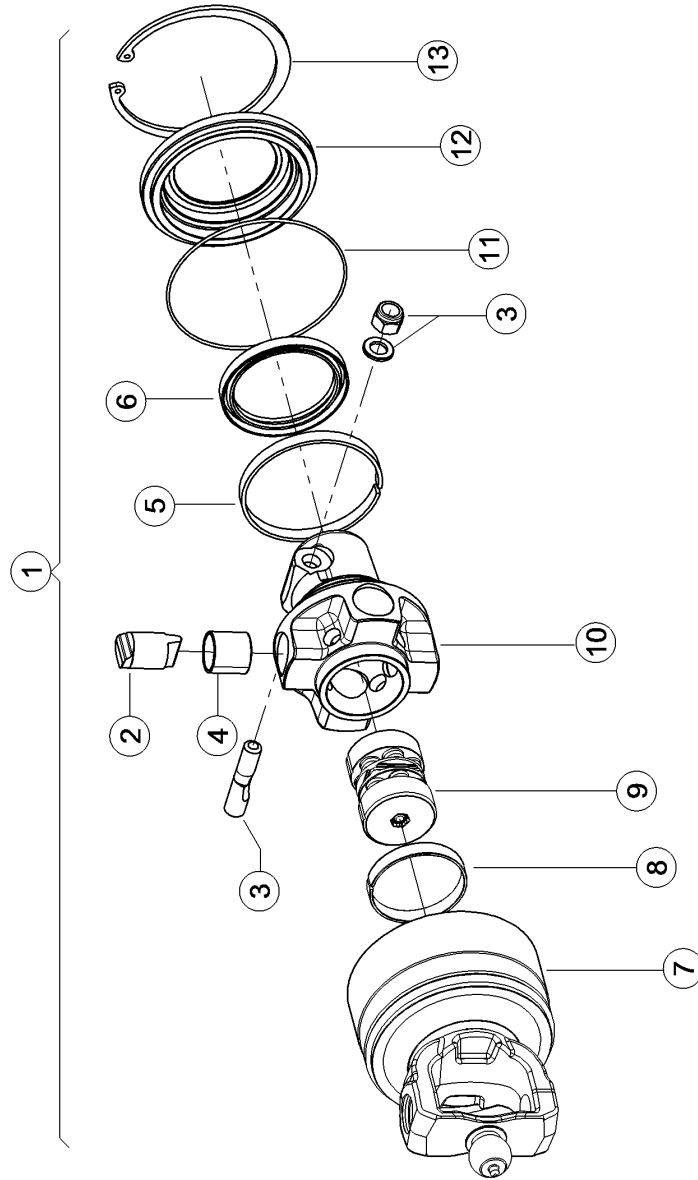
**1) Equipment**

machine no.

LW\_M04\_0040

Double-wide-angle PTO drive shaft, 6-spline  
+ from 99001239

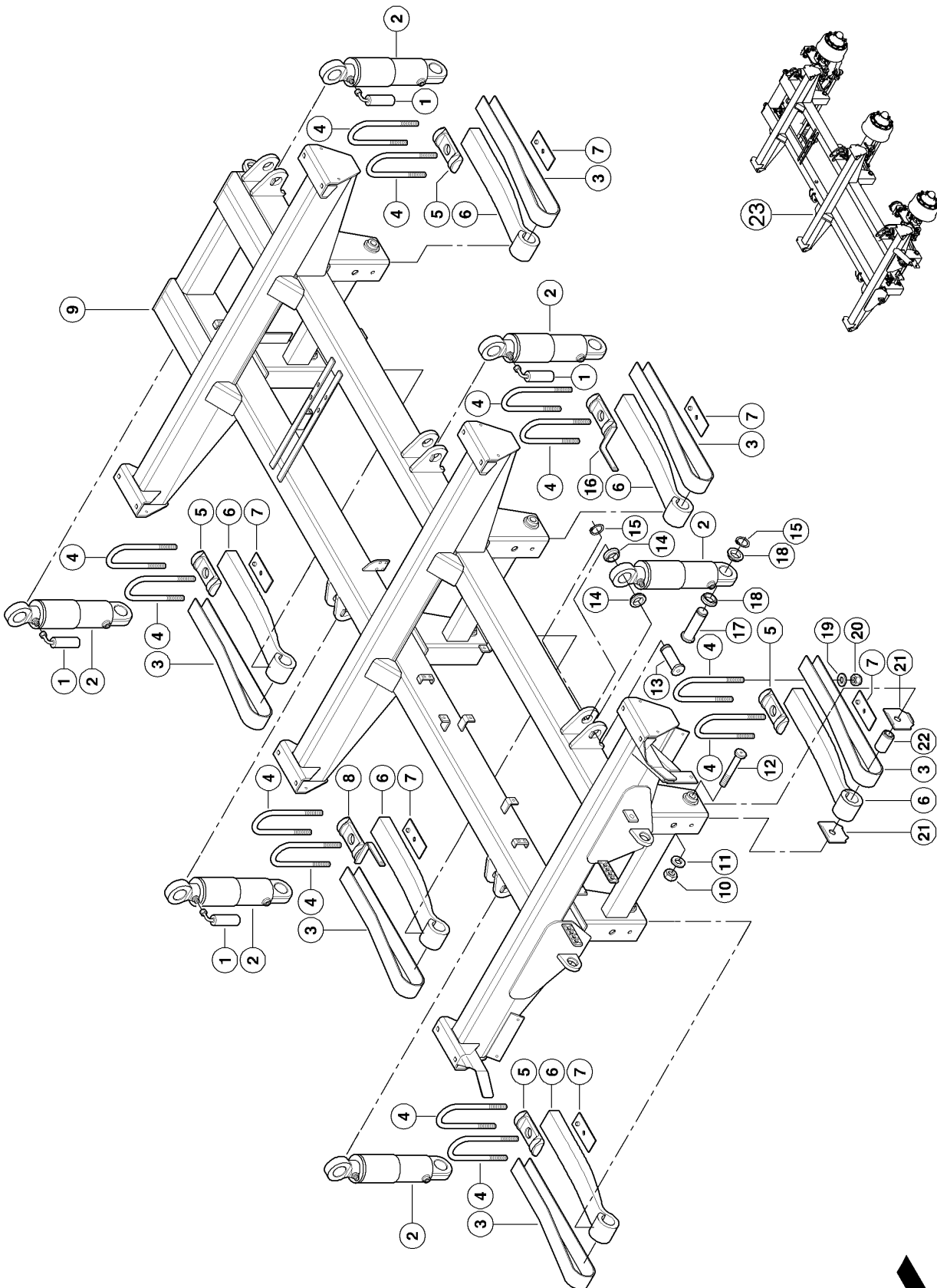




**100 DRIVE SHAFT, MAIN DRIVE 1)**

Pos.	Part No.	Description	Dimension	Quantity	Conditions
1	<b>00 0151 044 0</b>	CAM DISK		1	
2	<b>00 0151 051 0</b>	BLOCK, BODY	LR24	4	
3	<b>00 0151 268 0</b>	CLAMPING SCREW		1	
4	<b>00 0836 417 0</b>	BUSHING		4	
5	<b>00 0843 783 0</b>	RING		1	
6	<b>00 0843 784 0</b>	SEALING RING		1	
7	<b>00 0151 048 0</b>	HOUSING		1	
8	<b>00 0836 414 0</b>	RING		1	
9	<b>00 0151 049 0</b>	SPRING KIT		1	
10	<b>00 0151 050 0</b>	CLUTCH HUB		1	
11	<b>00 0843 785 0</b>	O-RING		1	
12	<b>00 0843 786 0</b>	COVER		1	
13	<b>00 0214 628 0</b>	CIRCLIP	138X4	1	
<b>1)</b>	<b>Equipment</b>	LW_M04_0040	Double-wide-angle PTO drive shaft, 6-spline + from 99001239		
	<b>machine no.</b>				

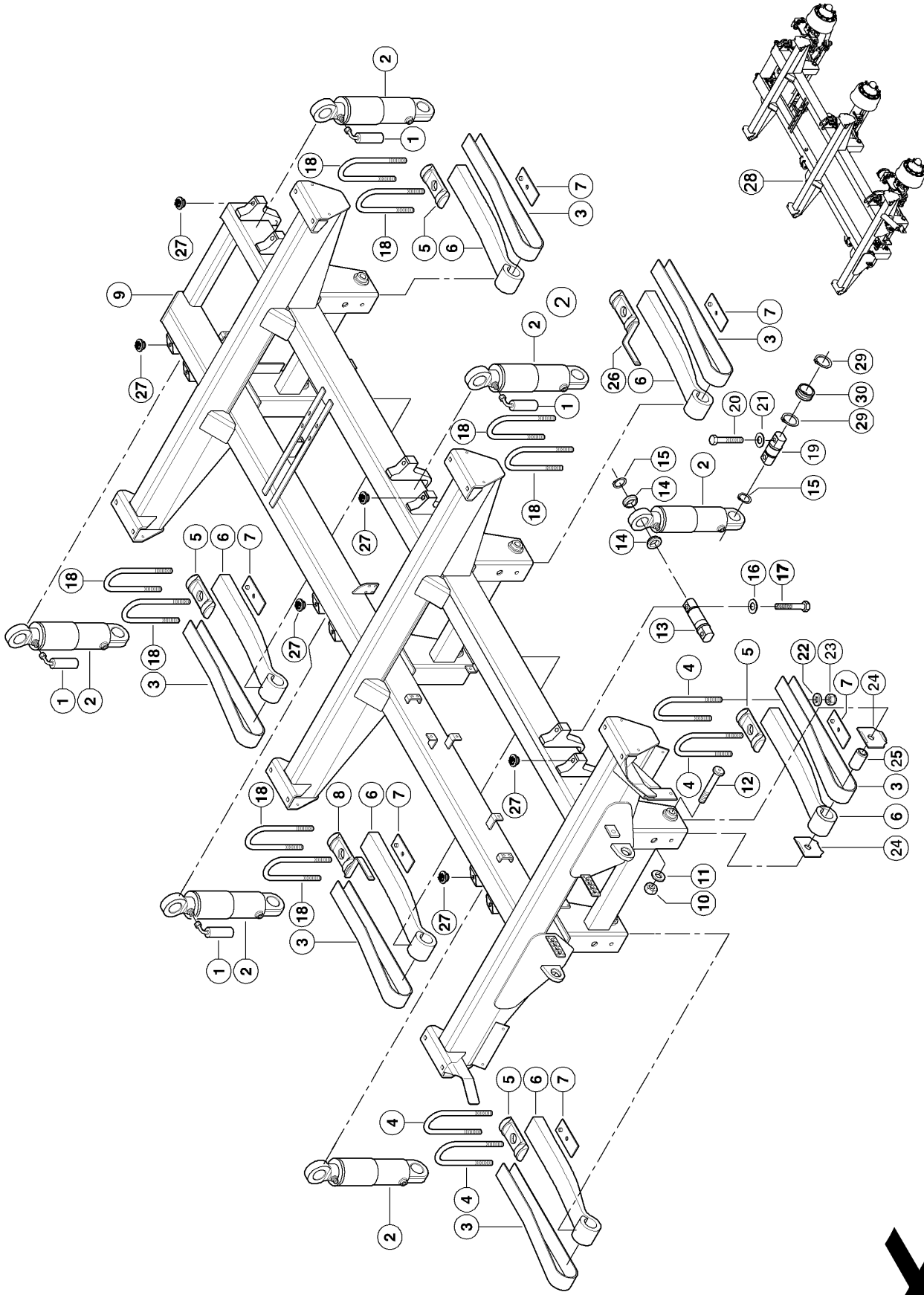
E0118 0305A100A 1



**100 AXLE SUPPORT 1)**

Pos.	Part No.	Description	Dimension	Quantity	Conditions
1	<b>00 0150 050 0</b>	OIL RESERVOIR	16-040-1090-01	4	
2	<b>00 0150 049 0</b>	HYDR.CYLINDER	12-110-1926-06	6	
2	<b>00 0150 328 0</b>	SEAL KIT		1	
3	<b>00 0150 101 0</b>	LOCKING PLATE		6	
4	<b>00 0150 103 0</b>	SPRING BRACKET	M24X308X125	8	
5	<b>00 0150 046 0</b>	SPRING PLATE		4	
6	<b>00 0150 100 0</b>	FLAT SPRING	550/380	6	
7	<b>00 0150 102 0</b>	PLATE	SL 120	6	
8	<b>00 0150 105 0</b>	SPRING PLATE	RECHTS	1	
9	<b>00 0150 106 0</b>	FRAME		1	
10	<b>00 0214 605 0</b>	LOCK NUT	M30	6	
11	<b>00 0214 604 0</b>	WASHER	31X56X5	6	
12	<b>00 0219 730 0</b>	SCREW	M30X200-40	6	
13	<b>00 0150 053 0</b>	PIN	D=50 L=135	6	
14	<b>00 0150 054 0</b>	SLEEVE	D65/50 L=20.7	12	
15	<b>00 0237 862 0</b>	CIRCLIP	50X2	12	
16	<b>00 0150 104 0</b>	SPRING PLATE	LINKS	1	
17	<b>00 0150 052 0</b>	PIN	D=50 L=164	6	
18	<b>00 0150 051 0</b>	SLEEVE	D63,5/50 L=17.2	12	
19	<b>00 0242 668 0</b>	FLAT WASHER	24-25X44X4	24	
20	<b>00 0215 490 0</b>	LOCK NUT	M24	24	
21	<b>00 0150 048 0</b>	COVER PLATE		12	
22	<b>00 0150 044 0</b>	BUSHING	57/30,1X102	6	
23	<b>00 1317 152 0</b>	AXLE SUPPORT		1	
23	<b>00 1322 483 0</b>	AXLE SUPPORT	TRIDEM HYDR.PNEU. HB 26,	1	
<b>1) Equipment</b>					
		LW_N08_0450	0450_forc.axl.tridem.hy.su.AB		
<b>machine no.</b>		LW_N08_0460	0460_forc.re.a.tridem.hy.su.HB + up to 99001068		

E0118 0305A100B 1

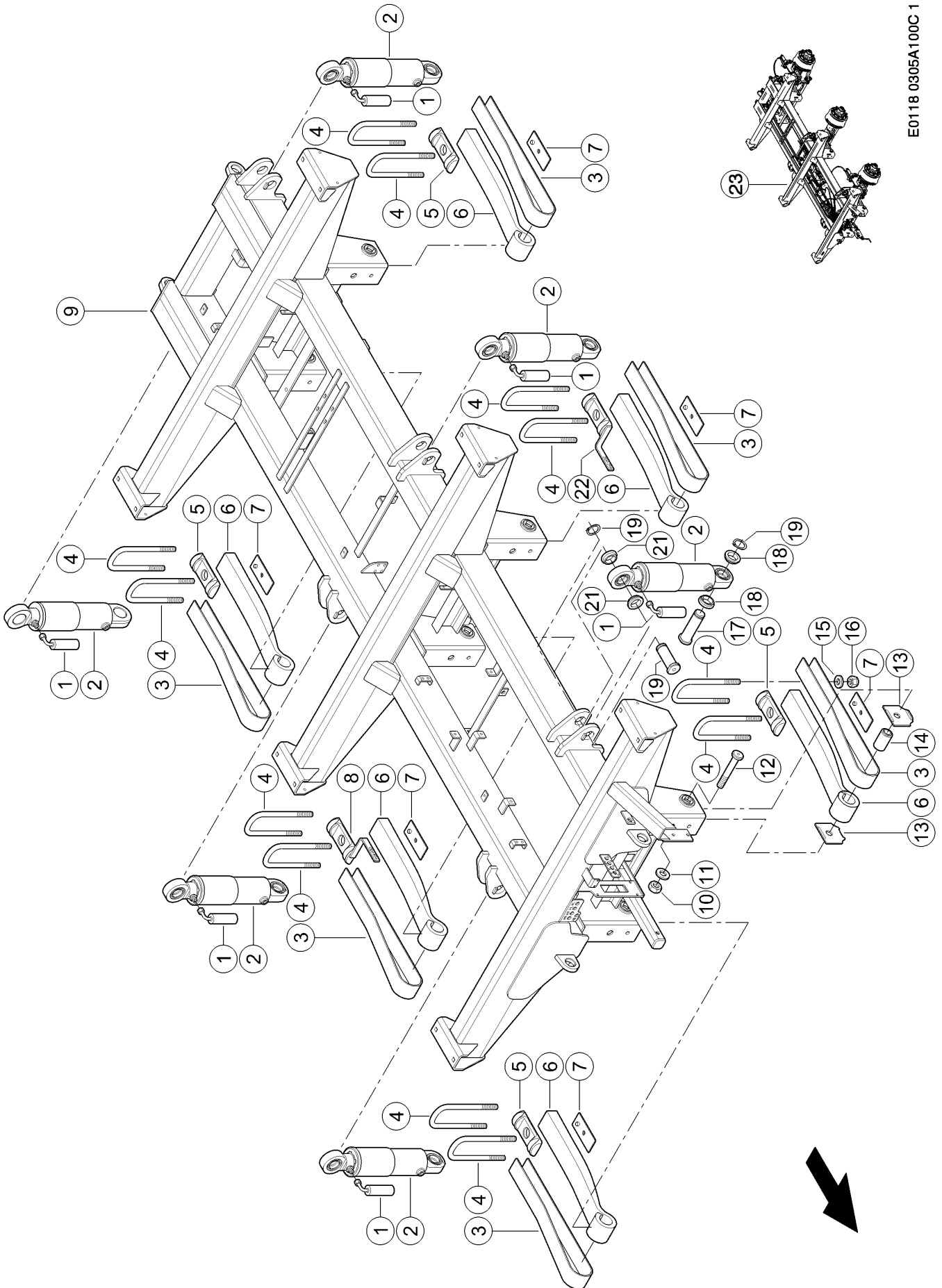


**100 AXLE SUPPORT 1)**

Pos.	Part No.	Description	Dimension	Quantity	Conditions
1	<b>00 0150 050 0</b>	OIL RESERVOIR	16-040-1090-01	4	
2	<b>00 0150 049 0</b>	HYDR.CYLINDER	12-110-1926-06	6	
2	<b>00 0150 328 0</b>	SEAL KIT		1	
3	<b>00 0150 527 0</b>	LOCKING PLATE		6	
4	<b>00 0150 528 0</b>	SPRING BRACKET	M24X320X125	4	
5	<b>00 0150 046 0</b>	SPRING PLATE		4	
6	<b>00 0150 526 0</b>	FLAT SPRING	550/380	6	
7	<b>00 0150 102 0</b>	PLATE	SL 120	6	
8	<b>00 0150 530 0</b>	SPRING PLATE	RECHTS	1	
9	<b>00 0150 531 0</b>	FRAME	AB 990 01133	1	
10	<b>00 0214 605 0</b>	LOCK NUT	M30	6	
11	<b>00 0214 604 0</b>	WASHER	31X56X5	6	
12	<b>00 0219 730 0</b>	SCREW	M30X200-40	6	
13	<b>00 0150 515 0</b>	PIN	D=55 L=189	6	
14	<b>00 0150 513 0</b>	SLEEVE	D63,5/50 L=27	12	
15	<b>00 0237 862 0</b>	CIRCLIP	50X2	12	
16	<b>00 0237 696 1</b>	WASHER	18 (3X19X34)	12	
17	<b>00 0217 246 0</b>	HEXAGON HEAD SCREW	M18X1,5X75	12	
18	<b>00 0150 528 0</b>	SPRING BRACKET	M24X320X125	8	
19	<b>00 0150 514 0</b>	PIN	D=55 L=135	6	
20	<b>00 0233 292 0</b>	HEX.HEAD BOLT	M16X70	12	
21	<b>00 0235 127 2</b>	WASHER	16 - 17X30X3	12	
22	<b>00 0242 668 0</b>	FLAT WASHER	24-25X44X4	24	
23	<b>00 0215 490 0</b>	LOCK NUT	M24	24	
24	<b>00 0150 048 0</b>	COVER PLATE		12	
25	<b>00 0150 044 0</b>	BUSHING	57/30,1X102	6	
26	<b>00 0150 529 0</b>	SPRING PLATE	LINKS	1	
27	<b>00 0213 355 0</b>	SCREW PLUG	M18X1,5 GPN 730	12	
28	<b>00 1322 974 0</b>	AXLE SUPPORT		1	
28	<b>00 1322 975 0</b>	AXLE SUPPORT	TRIDEM HYDR.PNEU. HB 26,	1	
29	<b>00 0235 187 0</b>	CIRCLIP	75X2,5	12	
30	<b>00 0649 839 0</b>	JOINT BEARING	GE50DO-2RS	1	

**1) Equipment**

	LW_N08_0450	0450_forc.axl.tridem.hy.su.AB
<b>machine no.</b>	LW_N08_0460	0460_forc.re.a.tridem.hy.su.HB + from 99001069 up to 99001132



E0118 0305A100C 1

Thank you so much for reading.  
Please click the “Buy Now!”  
button below to download the  
complete manual.



After you pay.

You can download the most  
perfect and complete manual in  
the world immediately.

Our support email:

[ebooklibonline@outlook.com](mailto:ebooklibonline@outlook.com)