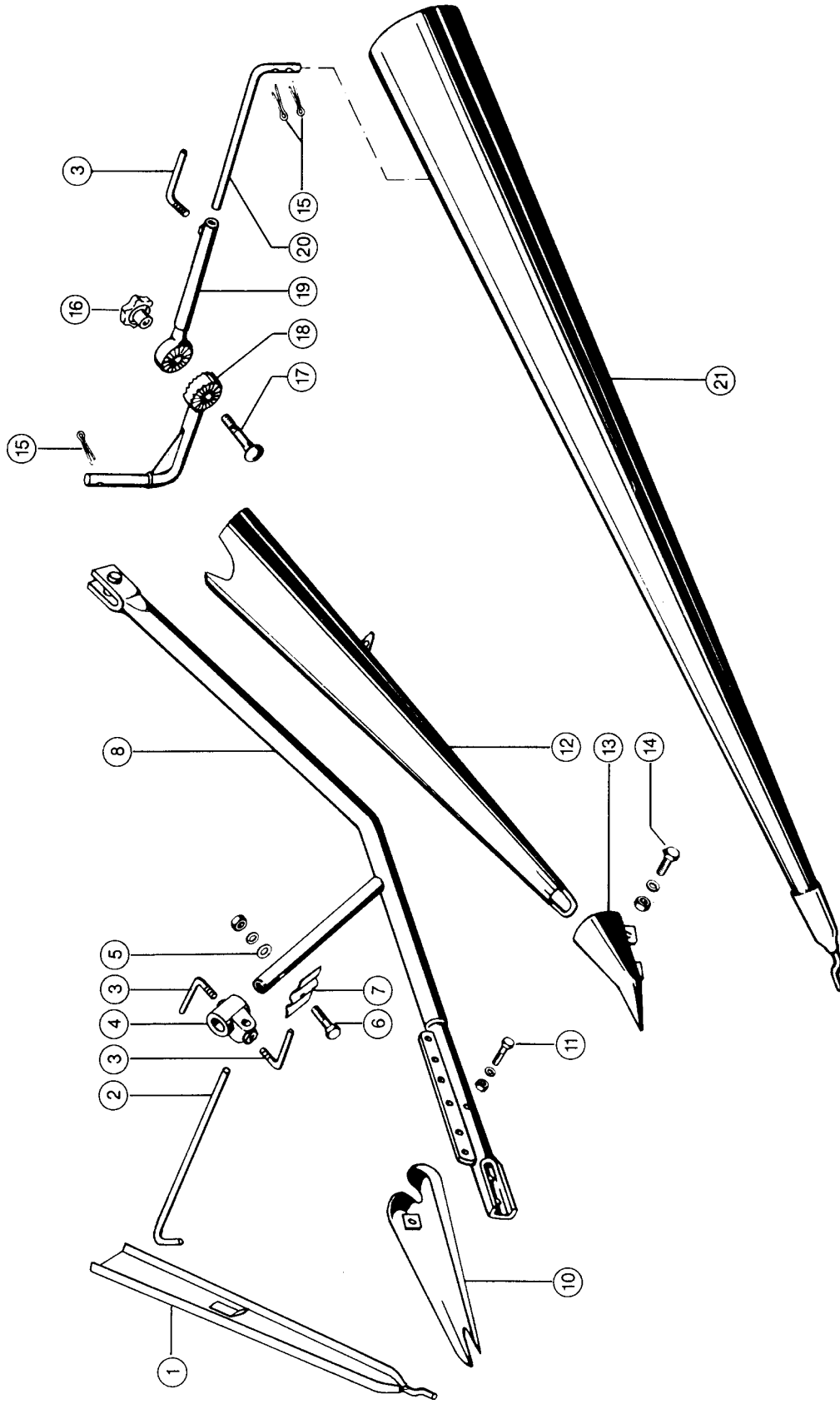


1

**CLHHS**



Commandor 114 CS

106018

**DIVIDER, VAR. 2556, 2527 1)**

Pos.	Part No.	Description	Dimension	Quantity	Conditions
1	<b>00 0612 558 1</b>	INT.DIVIDER LONG	870 LANG	2	2)
1	<b>00 0612 579 0</b>	INT.DIVIDER SHORT	600 LANG	2	3)
2	<b>00 0616 214 1</b>	ADJUSTING ROD	D 12X490	2	
3	<b>00 0500 924 2</b>	TOMMY SCREW	M 12	6	
4	<b>00 0609 887 0</b>	CROSS BEARING		2	
5	<b>00 0236 913 2</b>	FLAT WASHER	10-10,5X20X2	4	
6	<b>00 0235 533 0</b>	HEX.HEAD BOLT	M10X45	4	
6	<b>00 0236 171 0</b>	HEXAGONAL NUT	M10	4	
6	<b>00 0239 388 0</b>	CONTACT WASHER	A10-10,2X22,25X1,6	4	
7	<b>00 0609 888 1</b>	INTERMED.PIECE	1,5X37X58	4	
8	<b>00 0609 893 1</b>	DIVIDER SUPP.TUBE	1800 LG	2	2)
8	<b>00 0609 867 1</b>	DIVIDER SUPP.TUBE	1540 LG	2	3)
10	<b>00 0610 236 1</b>	GLIDE SKID	320X115X50	2	
11	<b>00 0235 519 0</b>	HEXAGON HEAD BOLT	M 8X50	2	
11	<b>00 0236 170 0</b>	HEXAGONAL NUT	M8	2	
11	<b>00 0239 387 0</b>	CONTACT WASHER	A8-8,2X18X1,4	2	
12	<b>00 0674 389 3</b>	CENTR. SEPARAT.	1160 LANG	2	2)
12	<b>00 0670 372 2</b>	DIVIDER CEN.PLATE	840 LANG	2	3)
13	<b>00 0520 020 1</b>	POINT	230X105X90	2	
14	<b>00 0237 383 0</b>	HEXAGON HEAD BOLT	M10X25	4	
14	<b>00 0236 171 0</b>	HEXAGONAL NUT	M10	4	
14	<b>00 0239 388 0</b>	CONTACT WASHER	A10-10,2X22,25X1,6	4	
15	<b>00 0235 097 0</b>	SPLIT PIN	5X36	6	
16	<b>00 0238 056 0</b>	CONTROL KNOB	K 63-M12	2	
17	<b>00 0211 180 1</b>	COACH BOLT	M12X 55	2	
18	<b>00 0609 873 0</b>	ADJUSTING PLATE		2	
19	<b>00 0609 876 0</b>	ADJUSTING TUBE	625 LANG	2	2)
19	<b>00 0609 861 0</b>	ADJUSTING TUBE	330 LANG	2	3)
20	<b>00 0610 209 0</b>	ADJUSTING ROD	D20X660	2	
21	<b>00 0609 885 2</b>	OUTER DIVIDER		2	2)
21	<b>00 0610 274 3</b>	PUSH SWITCH		2	3)

**1) Remarks**

VAR. 2556 = DIVIDER LONG  
VAR. 2527 = DIVIDER SHORT

**2) Remarks**

Var. 2556

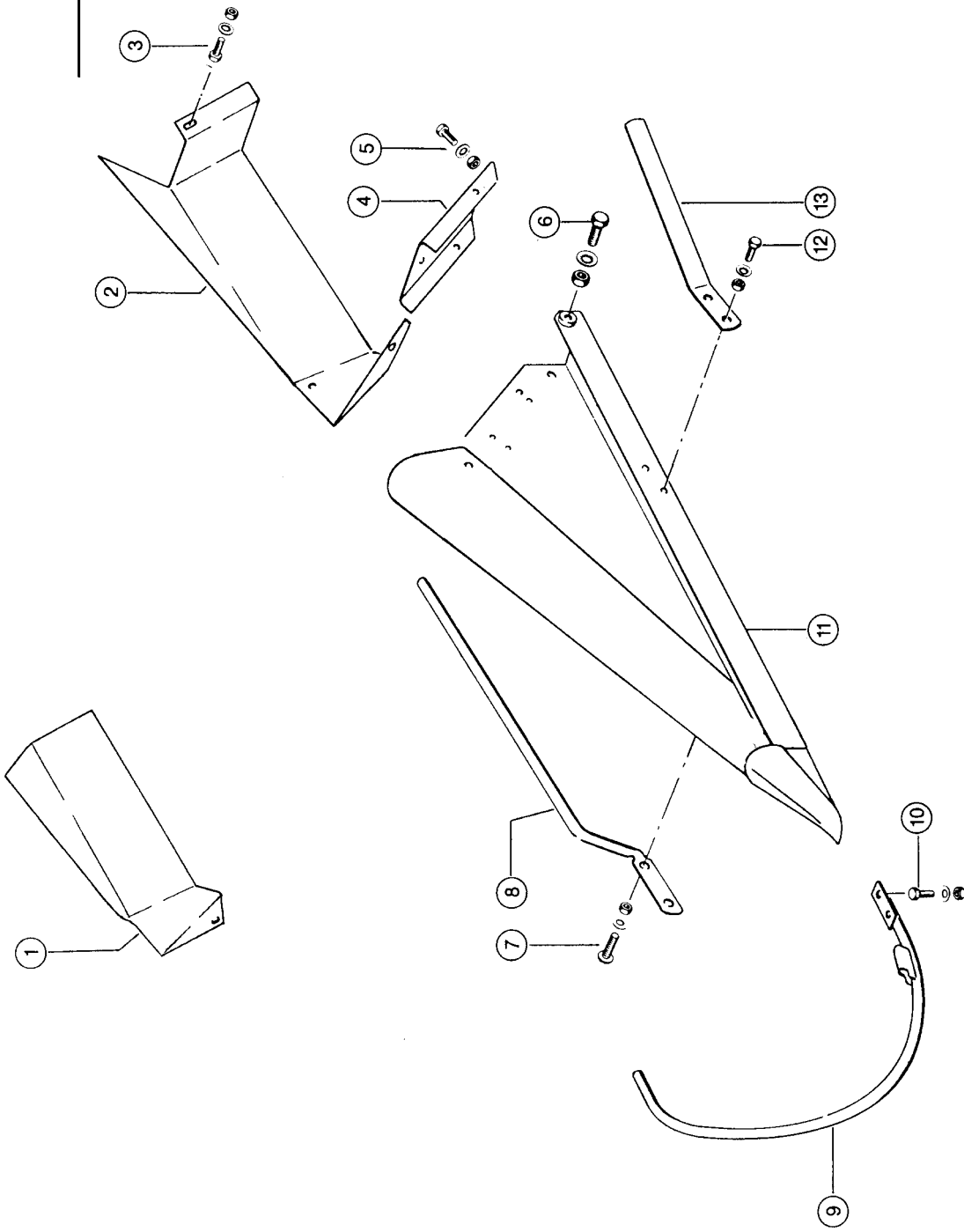
**3) Remarks**

VAR. 2527

**CLHHS**

COMMANDOR 114 CS

**2**



106019

Commandor 114 CS

**SPECIAL CROP DIVIDER, VAR. 4282 1)**

Pos.	Part No.	Description	Dimension	Quantity	Conditions
1	<b>00 0670 069 1</b>	DEFLECTOR R.H.	1.5X278.5X600	1	2)
2	<b>00 0670 070 1</b>	DEFLECTOR L.H.	1,5X0280X0600	1	2)
3	<b>00 0237 439 0</b>	HEXAGON HEAD BOLT	M8X16	2	2)
3	<b>00 0236 170 0</b>	HEXAGONAL NUT	M8	2	3)
3	<b>00 0239 387 0</b>	CONTACT WASHER	A8-8,2X18X1,4	4	3)
4	<b>00 0688 974 0</b>	SUPPORT	4X161X200	2	
5	<b>00 0237 423 0</b>	HEXAGON HEAD BOLT	M10X28	4	
5	<b>00 0236 171 0</b>	HEXAGONAL NUT	M10	4	
5	<b>00 0239 388 0</b>	CONTACT WASHER	A10-10,2X22,25X1,6	4	
6	<b>00 0236 056 0</b>	HEXAGON HEAD BOLT	M12X25	4	
6	<b>00 0236 172 0</b>	HEXAGONAL NUT	M12	4	
6	<b>00 0239 389 0</b>	CONTACT WASHER	A12	4	
7	<b>00 0234 953 0</b>	COACH BOLT	M8X20X13	4	
7	<b>00 0236 170 0</b>	HEXAGONAL NUT	M8	4	
7	<b>00 0239 387 0</b>	CONTACT WASHER	A8-8,2X18X1,4	4	
8	<b>00 0688 975 1</b>	DEFLECTOR INNER		2	
9	<b>00 0688 025 0</b>	BEND DIVIDER		2	
10	<b>00 0237 442 0</b>	HEXAGON HEAD BOLT	M8X25	4	
10	<b>00 0236 170 0</b>	HEXAGONAL NUT	M8	4	
10	<b>00 0239 387 0</b>	CONTACT WASHER	A8-8,2X18X1,4	4	
11	<b>00 0688 969 1</b>	DIVIDER L.H.		1	
11	<b>00 0688 970 1</b>	DIVIDER R.H.		1	
12	<b>00 0237 439 0</b>	HEXAGON HEAD BOLT	M8X16	4	
12	<b>00 0236 170 0</b>	HEXAGONAL NUT	M8	4	
12	<b>00 0239 387 0</b>	CONTACT WASHER	A8-8,2X18X1,4	4	
13	<b>00 0688 976 0</b>	DEFLECTOR OUTER	3,0X0030X0400	2	

<b>1) Remarks</b>	OPTION
<b>2) Remarks</b>	from cutterbar 262525
<b>3) Remarks</b>	AB SCHNEIDWERK 262525

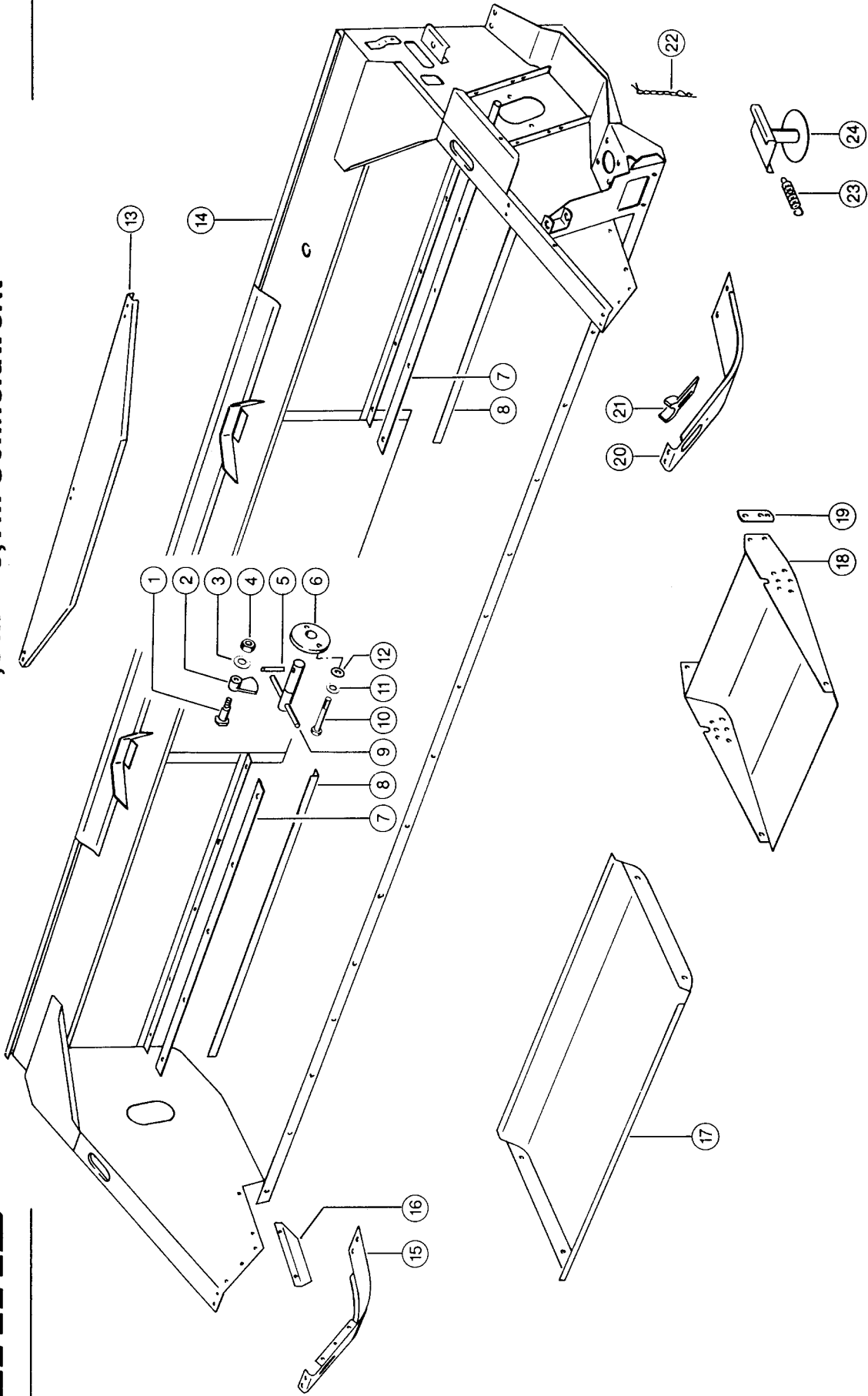
**CLHHS**

**3,9 m – 5,1 m Schneidwerk**

**3**

Commandor 114 CS

106020



**3,9 M - 5,1 M CUTTERBAR THROUG**

Pos.	Part No.	Description	Dimension	Quantity	Conditions
1	<b>00 0653 251 1</b>	PIN	16XH11X19X36	2	
2	<b>00 0670 155 2</b>	FUSE		2	
3	<b>00 0239 389 0</b>	CONTACT WASHER	A12	2	
4	<b>00 0236 172 0</b>	HEXAGONAL NUT	M12	2	
5	<b>00 0244 578 0</b>	SPRING PIN	10 X 40 -ST	2	
6	<b>00 0670 156 1</b>	GUIDE		2	
7	<b>00 0670 074 2</b>	STRIPPER	3X35X1170	2	1)
7	<b>00 0670 282 2</b>	STRIPPER	3X35X1475	2	2)
7	<b>00 0674 251 2</b>	STRIPPER	3X35X1780	2	3)
8	<b>00 0650 297 2</b>	STRIPPER ANGLE	30X20X3X1015	2	1)
8	<b>00 0688 045 2</b>	STRIPPER ANGLE	30X20X3X1320	2	2)
8	<b>00 0688 017 2</b>	STRIPPER ANGLE	30X20X3X1625	2	3)
9	<b>00 0670 160 2</b>	BOLT		2	
10	<b>00 0237 820 0</b>	HEXAGON HEAD BOLT	M12X90	2	
10	<b>00 0237 461 0</b>	HEXAGON HEAD BOLT	M12X30	2	
11	<b>00 0239 389 0</b>	CONTACT WASHER	A12	4	
12	<b>00 0235 124 3</b>	FLAT WASHER	12- 13X24X2,5	16	
13	<b>00 0688 102 3</b>	DUST SHIELD	1,5X265X1400	1	
14	<b>00 0650 230 1</b>	CUTTERBAR TABLE	3,90M	1	1)
14	<b>00 0650 110 2</b>	CUTTERBAR TABLE	4,50M S	1	2)
14	<b>00 0650 002 1</b>	CUTTERBAR TABLE	5,10M S	1	3)
15	<b>00 0650 054 0</b>	OUTER SHOE RH.	5X141X827	1	
16	<b>00 0604 253 1</b>	GUARD PLATE R.H.	1,5X124X280	1	
17	<b>00 0673 781 4</b>	SKID SHOE		1	
18	<b>00 0603 902 0</b>	SKID SHOE		2	
19	<b>00 0603 899 1</b>	CONNECTING PLATE	30X10X98	4	
20	<b>00 0650 049 1</b>	OUTER SHOE LH.	5X219,5X827	1	
21	<b>00 0603 868 1</b>	DIVIDER SUPPORT		2	
22	<b>00 0673 763 0</b>	LOCK CHAIN		2	
23	<b>00 0942 497 0</b>	TENSION SPRING	2,5 X 25 X 96	2	4)
24	<b>00 0645 802 0</b>	SUPPORT		2	4)

**1) Remarks** at 3.9 m cutterbar

**2) Remarks** BEI 4,5 M SCHNEIDWERK

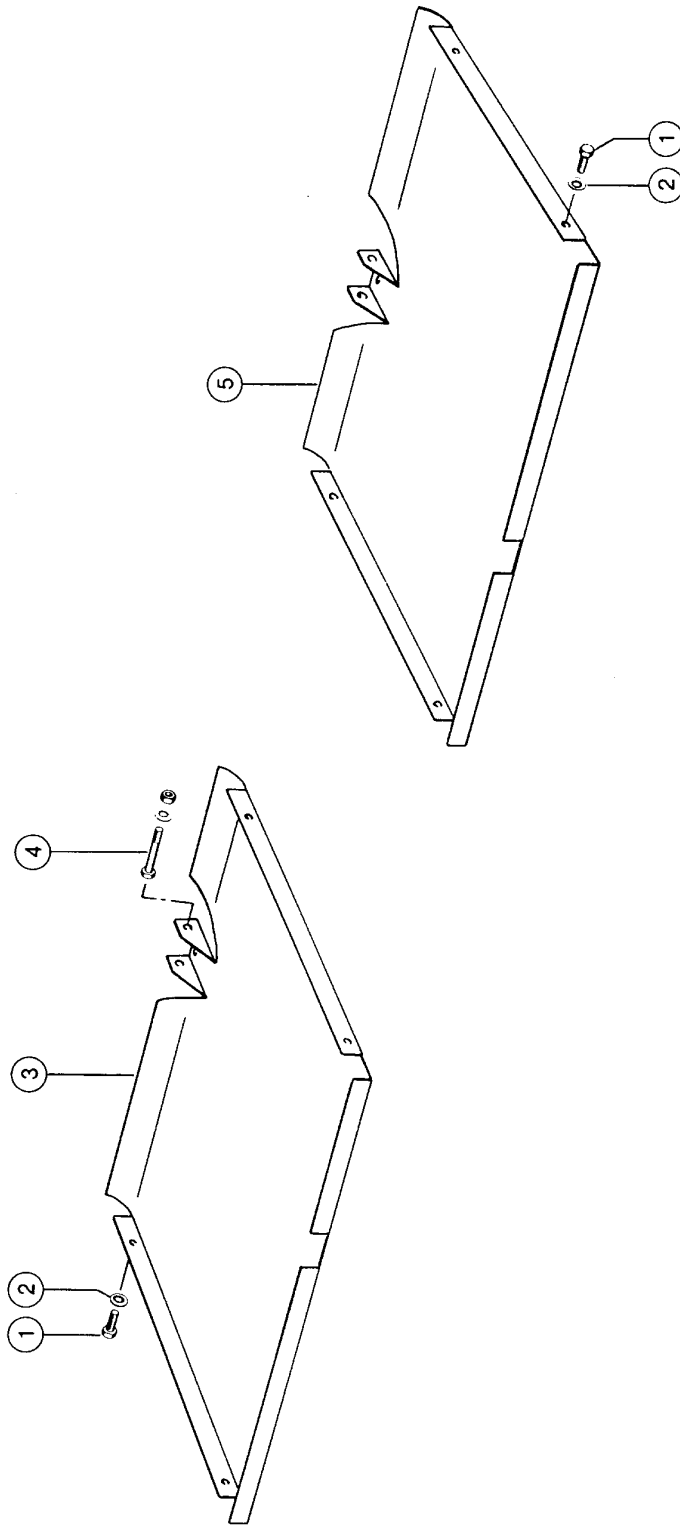
**3) Remarks** BEI 5,1 M SCHNEIDWERK

**4) Remarks** (1)

**CLAAS**

**3,9 m – 5,1 m Schneidwerk**

**4**



106021

Commandor 114 CS

**STONE GUARD, VAR. 4944, 4945, 4946 1)**

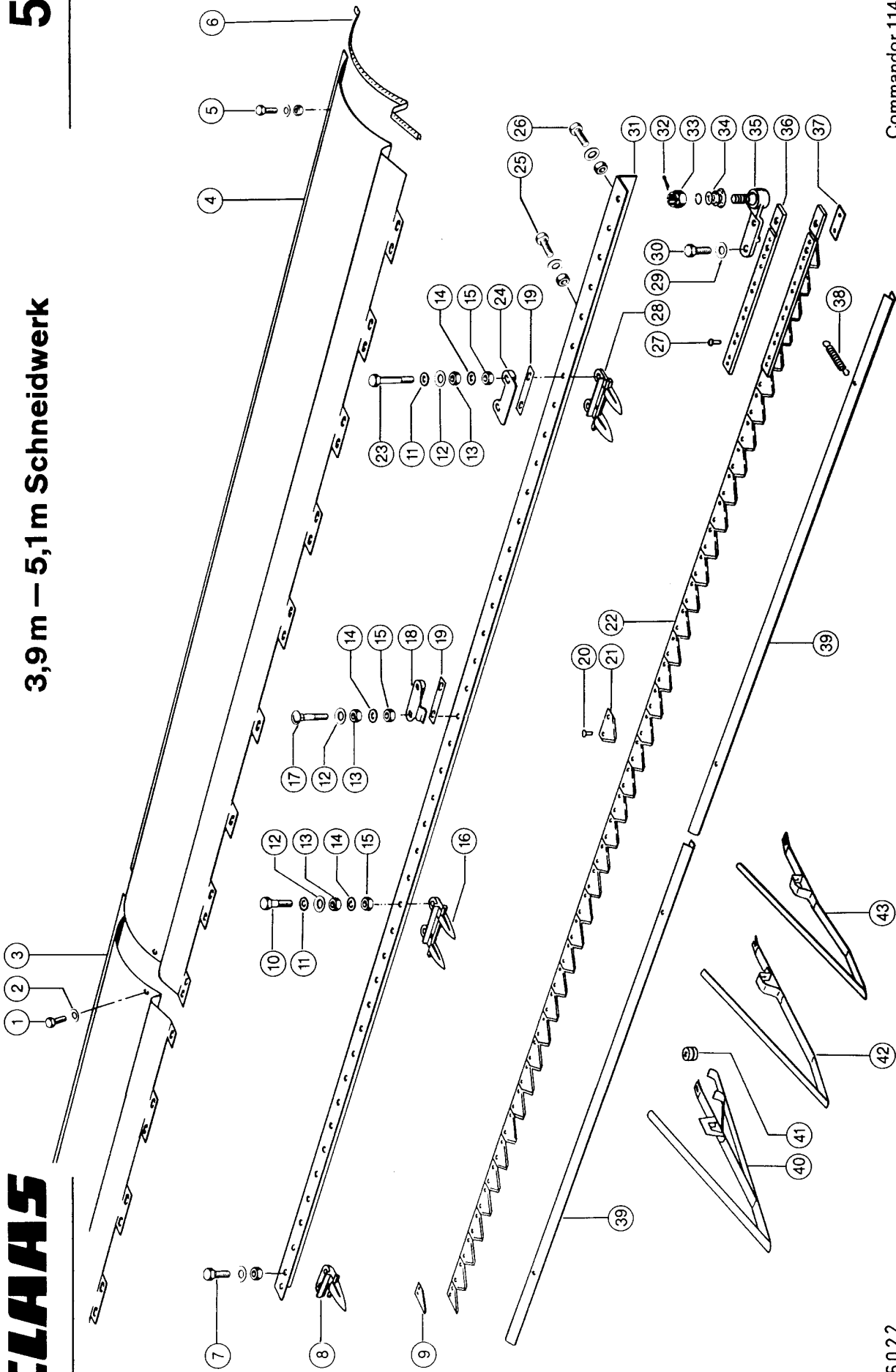
Pos.	Part No.	Description	Dimension	Quantity	Conditions
1	<b>00 0237 383 0</b>	HEXAGON HEAD BOLT	M10X25	8	
2	<b>00 0239 388 0</b>	CONTACT WASHER	A10-10,2X22,25X1,6	8	
3	<b>00 0650 318 0</b>	STONE GUARD, R.H.	814 LANG	1	2)
3	<b>00 0650 328 0</b>	STONE GUARD, R.H.	1119 LANG	1	3)
3	<b>00 0688 021 0</b>	STONE GUARD, R.H.	1424 LANG	1	4)
4	<b>00 0235 223 1</b>	HEXAGON HEAD BOLT	M10X100	2	
4	<b>00 0236 171 0</b>	HEXAGONAL NUT	M10	2	
4	<b>00 0239 388 0</b>	CONTACT WASHER	A10-10,2X22,25X1,6	2	
4	<b>00 0236 913 2</b>	FLAT WASHER	10-10,5X20X2	2	
5	<b>00 0650 317 0</b>	STONE GUARD, L.H.	814 LANG	1	2)
5	<b>00 0650 327 0</b>	STONE GUARD, L.H.	1119 LANG	1	3)
5	<b>00 0688 020 0</b>	STONE GUARD, L.H.	1424 LANG	1	4)
<b>1)</b>	<b>Remarks</b>	OPTION			
<b>2)</b>	<b>Remarks</b>	at 3.9 m cutterbar			
<b>3)</b>	<b>Remarks</b>	BEI 4,5 M SCHNEIDWERK			
<b>4)</b>	<b>Remarks</b>	BEI 5,1 M SCHNEIDWERK			



**CLAAS**

**3,9 m – 5,1 m Schneidwerk**

**5**



Commandor 114 CS

106022

**FINGER BAR, FOR 3,9 M - 5,1 M CUTTERBAR**

Pos.	Part No.	Description	Dimension	Quantity	Conditions
1	<b>00 0610 097 1</b>	COACH BOLT	M8X16	2	
2	<b>00 0239 387 0</b>	CONTACT WASHER	A8-8,2X18X1,4	2	
3	<b>00 0650 306 0</b>	GUIDING PLATE	1,5X0483X1400	1	1)
3	<b>00 0650 157 0</b>	GUIDING PLATE	1,5X483X2010	1	2)
3	<b>00 0650 095 0</b>	GUIDING PLATE	1,5X483X2620	1	3)
4	<b>00 0650 125 0</b>	GUIDING PLATE	1,5X0483X2505	1	
5	<b>00 0237 439 0</b>	HEXAGON HEAD BOLT	M8X16	1	
5	<b>00 0236 170 0</b>	HEXAGONAL NUT	M8	1	
5	<b>00 0239 387 0</b>	CONTACT WASHER	A8-8,2X18X1,4	1	
6	<b>00 0136 505 0</b>	SEALING PROFILE	20.5X9,25X1, 5X5000MM	1	4)
7	<b>00 0237 874 0</b>	HEXAGON HEAD BOLT	M10X35	3	
7	<b>00 0236 171 0</b>	HEXAGONAL NUT	M10	3	
7	<b>00 0239 388 0</b>	CONTACT WASHER	A10-10,2X22,25X1,6	3	
8	<b>00 0676 241 4</b>	END FINGER		1	
9	<b>00 0611 204 1</b>	KNIFE SECTION		1	
9	<b>00 0611 319 0</b>	KNIFE SECTION PL.		1	
10	<b>00 0235 534 1</b>	HEXAGON HEAD BOLT	M10X50X29	25	5)
11	<b>00 0238 292 0</b>	WASHER	10,5X 22 X1	29	6)
12	<b>00 0235 133 0</b>	SPRING WASHER	W.ERS.D.2351331	51	7)
13	<b>00 0236 171 0</b>	HEXAGONAL NUT	M10	51	7)
14	<b>00 0236 831 0</b>	WASHER	10,5X25X2	51	7)
15	<b>00 0237 947 0</b>	HEX. NUT WITH CLAMP. PART	M10	51	7)
16	<b>00 0676 235 3</b>	DOUBLE FINGER		22	8)
17	<b>00 0236 462 0</b>	COACH BOLT	M10X60	22	8)
18	<b>00 0676 236 0</b>	PRESSURE THUMB		11	9)
19	<b>00 0673 753 1</b>	SHIM		76	10)
20	<b>00 0237 663 0</b>	COUNTERSUNK RIVET	6X17	1	
21	<b>00 0611 203 1</b>	KNIFE SECTION		1	
21	<b>00 0611 318 0</b>	KNIFE SECTION PL.		1	
22	<b>00 0611 222 2</b>	MOWER KNIFE,SERRATED		2	1)
22	<b>00 0676 306 1</b>	MOWER KNIFE, PLAIN		2	11)
22	<b>00 0611 213 2</b>	MOWER KNIFE,SERRATED		2	2)
22	<b>00 0676 321 1</b>	MOWER KNIFE, PLAIN		2	2)
22	<b>00 0611 214 2</b>	MOWER KNIFE,SERRATED		2	3)
22	<b>00 0676 322 1</b>	MOWER KNIFE, PLAIN		2	3)
23	<b>00 0237 808 0</b>	HEXAGON HEAD BOLT	M10X75	4	
24	<b>00 0613 017 2</b>	KNIFE CLIP		2	
25	<b>00 0237 383 0</b>	HEXAGON HEAD BOLT	M10X25	13	12)
25	<b>00 0236 171 0</b>	HEXAGONAL NUT	M10	13	12)
25	<b>00 0239 388 0</b>	CONTACT WASHER	A10-10,2X22,25X1,6	13	12)
26	<b>00 0237 874 0</b>	HEXAGON HEAD BOLT	M10X35	2	
26	<b>00 0236 171 0</b>	HEXAGONAL NUT	M10	2	
26	<b>00 0239 388 0</b>	CONTACT WASHER	A10-10,2X22,25X1,6	2	
27	<b>00 0237 054 0</b>	COUNTERSUNK RIVET	6 X30	14	
27	<b>00 0237 664 0</b>	COUNTERSUNK RIVET	6X20	3	
28	<b>00 0676 249 1</b>	DOUBLE FINGER		4	
29	<b>00 0239 389 0</b>	CONTACT WASHER	A12	2	
30	<b>00 0236 056 0</b>	HEXAGON HEAD BOLT	M12X25	2	
31	<b>00 0673 774 1</b>	KNIFE CUTTERBAR	50X50X4220	1	1)
31	<b>00 0673 752 2</b>	KNIFE CUTTERBAR	50X50X7X4815	1	2)
31	<b>00 0674 256 1</b>	KNIFE CUTTERBAR	50X50X7X5440	1	3)
32	<b>00 0235 090 0</b>	SPLIT PIN	4 X 28	1	
33	<b>00 0244 455 0</b>	CASTELLATED NUT	M16X1,5	1	

**FINGER BAR, FOR 3,9 M - 5,1 M CUTTERBAR**

Pos.	Part No.	Description	Dimension	Quantity	Conditions
34	<b>00 0645 370 0</b>	RUBBER CAP	D 37	1	
35	<b>00 0670 120 1</b>	BALL JOINT	27 X 25	1	
36	<b>00 0676 231 0</b>	CONNCTION-STEEL		1	
37	<b>00 0676 232 0</b>	GUIDE	ERS.D.616286.0	1	
38	<b>00 0610 049 0</b>	TENSION SPRING	2 X 16,5X 65	4	
39	<b>00 0770 488 0</b>	SAFETY BAR	2 X 46,5X2100	1	
39	<b>00 0770 489 0</b>	SAFETY BAR	2X46,5X1800	1	
39	<b>00 0770 490 0</b>	SAFETY BAR	2 X 46,5X2400	1	
39	<b>00 0610 059 0</b>	SAFETY BAR	2X46,5X3020	1	
40	<b>00 0176 044 0</b>	CROP LIFTER		1	13)
40	<b>00 0176 078 0</b>	LOCKING CLIP		1	
41	<b>00 0176 045 0</b>	CROP LIFTER		1	13)
42	<b>00 0610 294 3</b>	CROP LIFTER		1	13)
43	<b>00 0610 272 3</b>	CROP LIFTER		1	

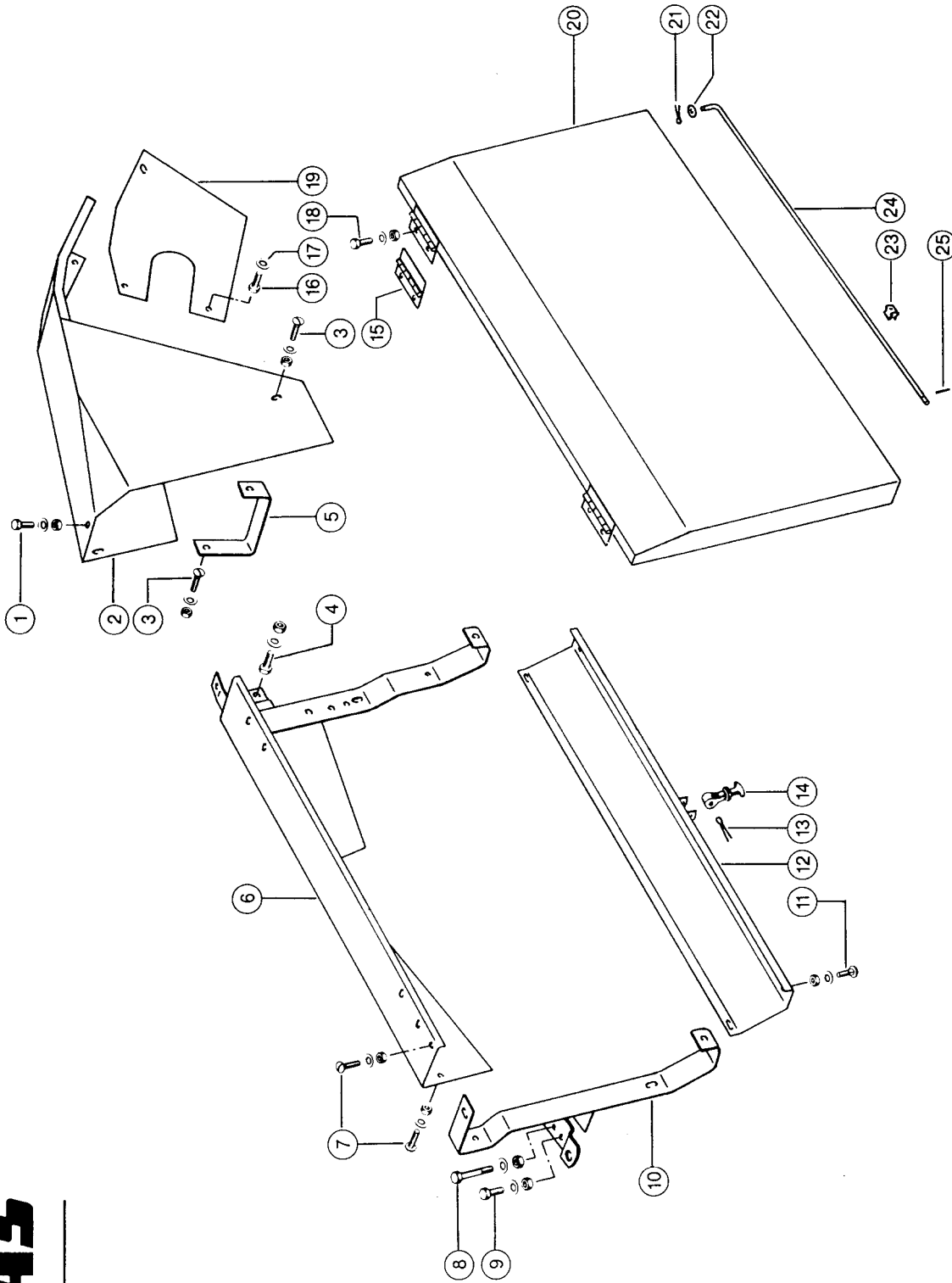
<b>1) Remarks</b>	at 3.9 m cutterbar
<b>2) Remarks</b>	BEI 4,5 M SCHNEIDWERK
<b>3) Remarks</b>	BEI 5,1 M SCHNEIDWERK
<b>4) Remarks</b>	500 long
<b>5) Remarks</b>	(29, 33)
<b>6) Remarks</b>	(33, 37)
<b>7) Remarks</b>	(59, 67)
<b>8) Remarks</b>	(26, 30)
<b>9) Remarks</b>	(13, 15)
<b>10) Remarks</b>	(92, 100)
<b>11) Remarks</b>	BEI 3,9 M SCHNEIDWERK
<b>12) Remarks</b>	(15, 17)
<b>13) Remarks</b>	optional

**CLHHS**

COMMANDOR 114 CS

**6**

Commandor 114 CS



**3,9 m – 5,1 m Schneidwerk**

106023

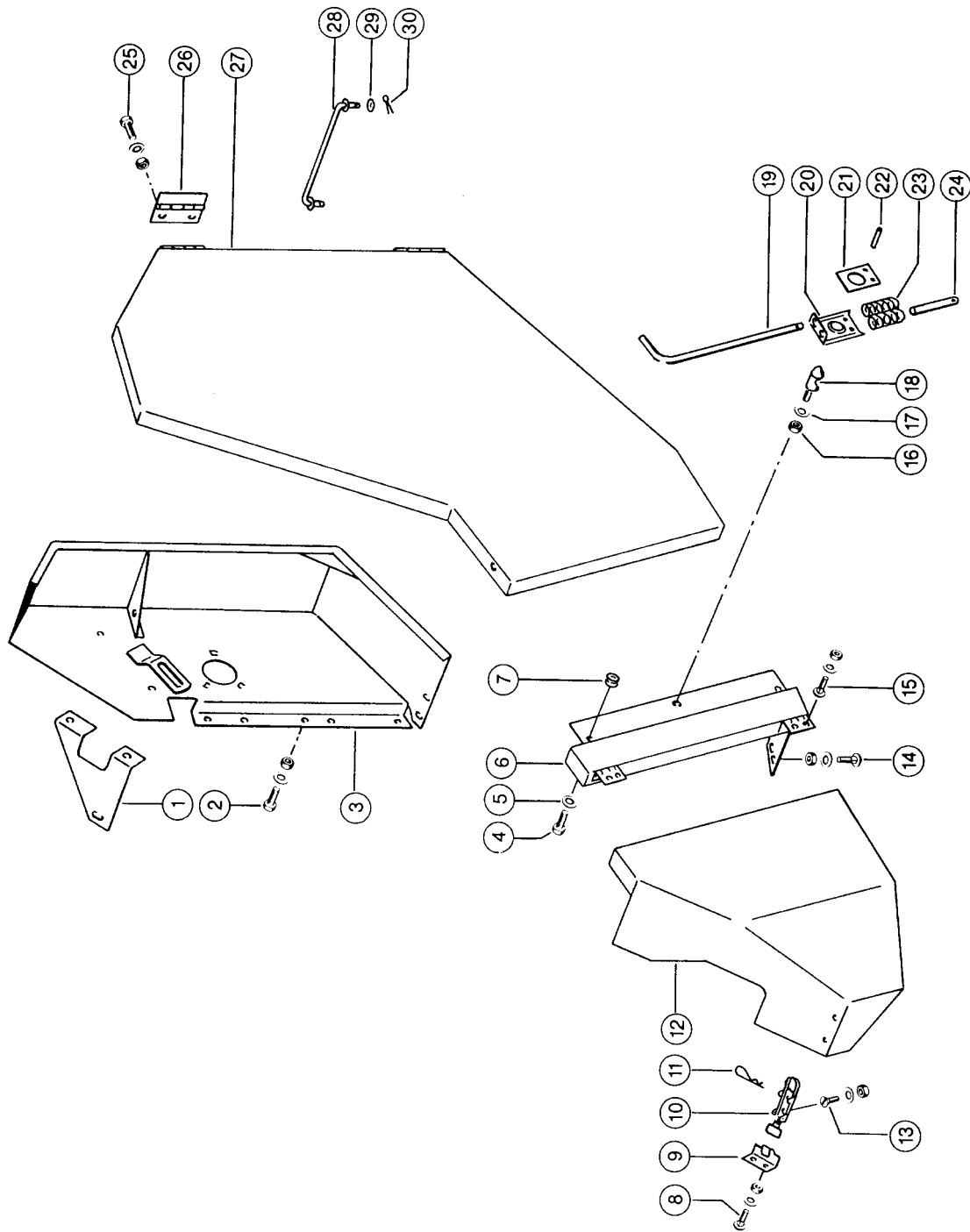
**GUARDS, WITH 3,9 -5,1 M CUTTERBAR**

Pos.	Part No.	Description	Dimension	Quantity	Conditions
1	<b>00 0244 138 0</b>	HEXAGON HEAD BOLT	M 8X18	1	
1	<b>00 0236 170 0</b>	HEXAGONAL NUT	M8	1	
1	<b>00 0239 387 0</b>	CONTACT WASHER	A8-8,2X18X1,4	1	
2	<b>00 0728 055 1</b>	GUARD PLATE		1	
3	<b>00 0610 097 1</b>	COACH BOLT	M8X16	2	
3	<b>00 0236 170 0</b>	HEXAGONAL NUT	M8	2	
3	<b>00 0239 387 0</b>	CONTACT WASHER	A8-8,2X18X1,4	2	
4	<b>00 0237 570 0</b>	HEXAGON HEAD BOLT	M10X16	1	
4	<b>00 0236 171 0</b>	HEXAGONAL NUT	M10	1	
4	<b>00 0239 388 0</b>	CONTACT WASHER	A10-10,2X22,25X1,6	1	
5	<b>00 0728 132 1</b>	SUPPORT	40X5X307	1	
6	<b>00 0650 130 0</b>	BACK PANEL L.H.		1	
7	<b>00 0244 138 0</b>	HEXAGON HEAD BOLT	M 8X18	2	
7	<b>00 0236 170 0</b>	HEXAGONAL NUT	M8	2	
7	<b>00 0239 387 0</b>	CONTACT WASHER	A8-8,2X18X1,4	2	
8	<b>00 0090 028 0</b>	HEXAGON HEAD BOLT	M10X110	1	
8	<b>00 0236 171 0</b>	HEXAGONAL NUT	M10	1	
8	<b>00 0239 388 0</b>	CONTACT WASHER	A10-10,2X22,25X1,6	1	
9	<b>00 0237 383 0</b>	HEXAGON HEAD BOLT	M10X25	1	
9	<b>00 0236 171 0</b>	HEXAGONAL NUT	M10	1	
9	<b>00 0239 388 0</b>	CONTACT WASHER	A10-10,2X22,25X1,6	1	
10	<b>00 0650 128 0</b>	SUPPORT FRONT		1	
11	<b>00 0237 465 0</b>	HEXAGON HEAD BOLT	M6X16	4	
11	<b>00 0236 169 0</b>	HEXAGONAL NUT	M6	4	
11	<b>00 0239 386 0</b>	CONTACT WASHER	A 6	4	
12	<b>00 0650 187 0</b>	SKID		1	
13	<b>00 0237 026 0</b>	SPLIT PIN	5X32	1	
14	<b>00 0804 951 0</b>	HOOD HOLDER	64 X 40 X 16	1	
15	<b>00 0654 313 0</b>	HINGE	1.9X50X101	2	
16	<b>00 0237 465 0</b>	HEXAGON HEAD BOLT	M6X16	2	
17	<b>00 0239 386 0</b>	CONTACT WASHER	A 6	2	
18	<b>00 0237 464 0</b>	HEXAGON HEAD BOLT	M06X12	4	
18	<b>00 0236 169 0</b>	HEXAGONAL NUT	M6	4	
18	<b>00 0239 386 0</b>	CONTACT WASHER	A 6	4	
19	<b>00 0650 155 0</b>	COVER PLATE		1	
20	<b>00 0650 185 0</b>	DOOR, FRONT		1	
21	<b>00 0235 112 0</b>	SPLIT PIN	3,2X 12	1	
22	<b>00 0236 912 2</b>	FLAT WASHER	8 - 8,4X16X1,6	1	
23	<b>00 0652 433 0</b>	CLAMP SPRING	12X18X15X0,75	1	
24	<b>00 0674 377 0</b>	SUPPORT	D7,75X817	1	
25	<b>00 0237 783 0</b>	SPRING PIN	3 X 16	1	

**CLAAS**

**3,9 m -- 5,1 m Schneidwerk**

**7**



Commandor 114 CS

106024

**GUARDS, WITH 3,9 -5,1 M CUTTERBAR**

Pos.	Part No.	Description	Dimension	Quantity	Conditions
1	<b>00 0650 113 0</b>	GUSSET PLATE	2X225X208	1	
2	<b>00 0237 382 0</b>	HEXAGON HEAD BOLT	M10X20	7	
2	<b>00 0236 171 0</b>	HEXAGONAL NUT	M10	7	
2	<b>00 0239 388 0</b>	CONTACT WASHER	A10-10,2X22,25X1,6	7	
3	<b>00 0650 143 0</b>	BEARING PLATE L.H		1	
4	<b>00 0237 438 0</b>	HEXAGON HEAD BOLT	M8X12	1	
5	<b>00 0239 387 0</b>	CONTACT WASHER	A8-8,2X18X1,4	1	
6	<b>00 0650 159 0</b>	SUPPORT		1	
7	<b>00 0755 648 0</b>	CABLE RING	A 8X11X1	2	
8	<b>00 0665 564 1</b>	COACH BOLT	M6X12	2	
8	<b>00 0236 169 0</b>	HEXAGONAL NUT	M6	2	
8	<b>00 0239 386 0</b>	CONTACT WASHER	A 6	2	
9	<b>00 0645 935 1</b>	SUPPORT	2,5X55X66	1	
10	<b>00 0659 176 0</b>	LOCK	115X20 46-57	1	
11	<b>00 0665 666 0</b>	SPRING CLIP	3X90	1	
12	<b>00 0645 924 1</b>	DOOR, FRONT		1	
13	<b>00 0237 061 0</b>	COUNTERSUNK BOLT	M6X16	2	
13	<b>00 0236 169 0</b>	HEXAGONAL NUT	M6	2	
13	<b>00 0239 386 0</b>	CONTACT WASHER	A 6	2	
14	<b>00 0237 382 0</b>	HEXAGON HEAD BOLT	M10X20	2	
14	<b>00 0236 171 0</b>	HEXAGONAL NUT	M10	2	
14	<b>00 0239 388 0</b>	CONTACT WASHER	A10-10,2X22,25X1,6	2	
15	<b>00 0665 564 1</b>	COACH BOLT	M6X12	4	
15	<b>00 0236 169 0</b>	HEXAGONAL NUT	M6	4	
15	<b>00 0239 386 0</b>	CONTACT WASHER	A 6	4	
16	<b>00 0236 171 0</b>	HEXAGONAL NUT	M10	1	
17	<b>00 0239 388 0</b>	CONTACT WASHER	A10-10,2X22,25X1,6	1	
18	<b>00 0648 620 0</b>	PIN	D20X48-M10X16,5	1	
19	<b>00 0650 189 1</b>	ROD	D10X368	1	
20	<b>00 0648 621 0</b>	LOCKING PLATE	3X52X97	1	
21	<b>00 0648 878 0</b>	GLIDE PLATE	2,1X36X73	1	
22	<b>00 0237 795 1</b>	SPRING PIN	4 X 26-N ERS.D. 237795	2	
23	<b>00 0503 693 0</b>	COMPRESS.SPRING	1,5X14X33	2	
24	<b>00 0648 883 0</b>	ROD	D10X95	1	
25	<b>00 0237 464 0</b>	HEXAGON HEAD BOLT	M06X12	4	
25	<b>00 0236 169 0</b>	HEXAGONAL NUT	M6	4	
25	<b>00 0239 386 0</b>	CONTACT WASHER	A 6	4	
26	<b>00 0654 313 0</b>	HINGE	1.9X50X101	2	
27	<b>00 0650 140 1</b>	DOOR L.H.		1	
28	<b>00 0650 171 0</b>	LINKAGE		1	
29	<b>00 0236 912 2</b>	FLAT WASHER	8 - 8,4X16X1,6	2	
30	<b>00 0235 110 0</b>	SPLIT PIN	2X18	2	

Thank you so much for reading.  
Please click the “Buy Now!”  
button below to download the  
complete manual.



After you pay.

You can download the most  
perfect and complete manual in  
the world immediately.

Our support email:

[ebooklibonline@outlook.com](mailto:ebooklibonline@outlook.com)