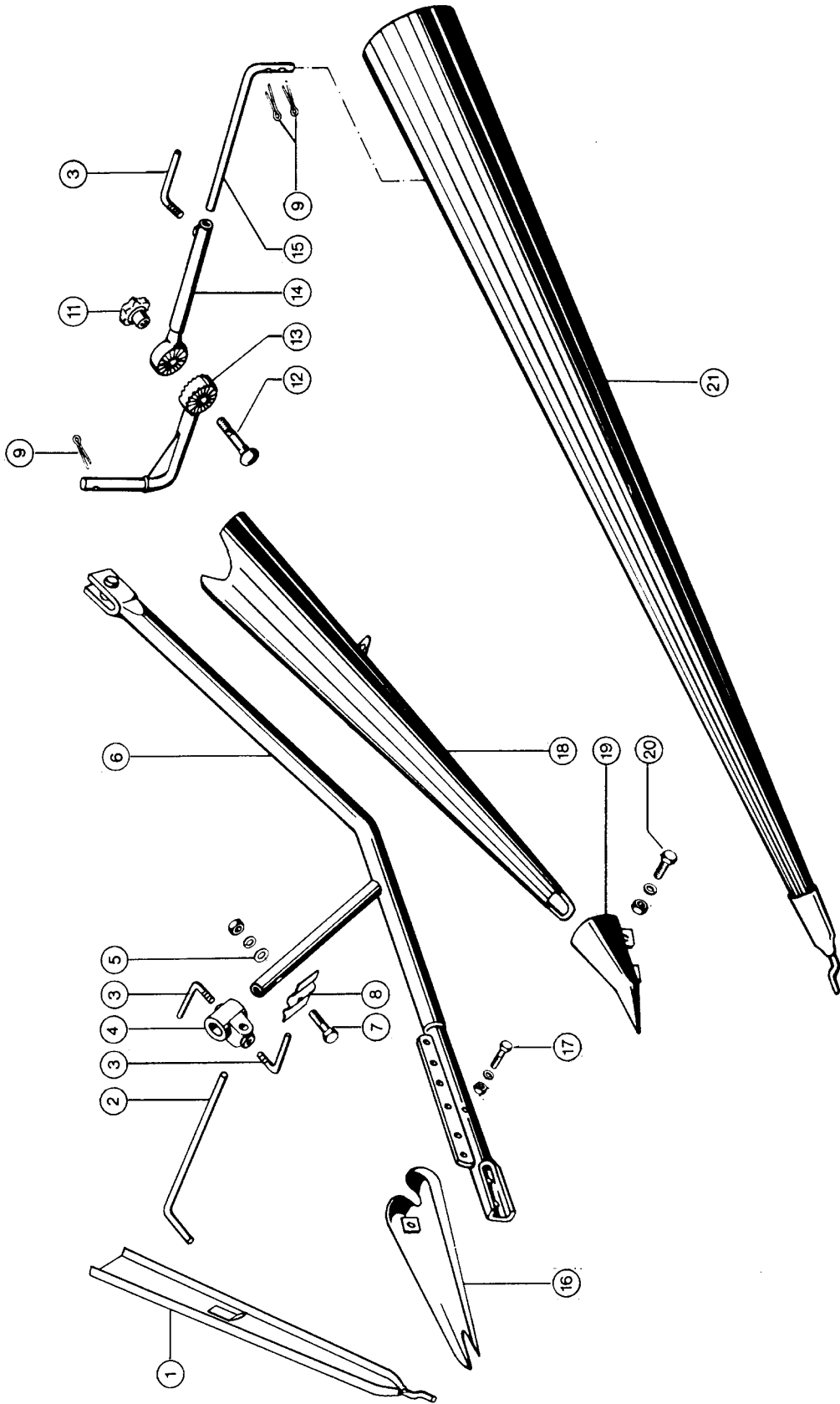


1

Dominator 68



**CLHHS**

**DIVIDER, VAR. 2556, 2527 1)**

Pos.	Part No.	Description	Dimension	Quantity	Conditions
1	<b>00 0612 558 1</b>	INT.DIVIDER LONG	870 LANG	2	2)
1	<b>00 0612 579 0</b>	INT.DIVIDER SHORT	600 LANG	2	3)
2	<b>00 0616 214 1</b>	ADJUSTING ROD	D 12X490	2	
3	<b>00 0500 924 2</b>	TOMMY SCREW	M 12	6	
4	<b>00 0609 887 0</b>	CROSS BEARING		2	
5	<b>00 0236 913 2</b>	FLAT WASHER	10-10,5X20X2	2	
6	<b>00 0609 893 1</b>	DIVIDER SUPP.TUBE	1800 LG	2	2)
6	<b>00 0609 867 1</b>	DIVIDER SUPP.TUBE	1540 LG	2	3)
7	<b>00 0235 533 0</b>	HEX.HEAD BOLT	M10X45	4	
7	<b>00 0236 171 0</b>	HEXAGONAL NUT	M10	4	
7	<b>00 0239 388 0</b>	CONTACT WASHER	A10-10,2X22,25X1,6	4	
8	<b>00 0609 888 1</b>	INTERMED.PIECE	1,5X37X58	4	
9	<b>00 0235 097 0</b>	SPLIT PIN	5X36	6	
11	<b>00 0238 056 0</b>	CONTROL KNOB	K 63-M12	1	
12	<b>00 0211 180 1</b>	COACH BOLT	M12X 55	1	
13	<b>00 0609 873 0</b>	ADJUSTING PLATE		2	
14	<b>00 0609 876 0</b>	ADJUSTING TUBE	625 LANG	2	2)
14	<b>00 0609 861 0</b>	ADJUSTING TUBE	330 LANG	2	3)
15	<b>00 0610 579 0</b>	SUPPORT	D20X312	2	
15	<b>00 0610 209 0</b>	ADJUSTING ROD	D20X660	2	
16	<b>00 0610 236 0</b>	GLIDE SKID		2	
17	<b>00 0235 519 0</b>	HEXAGON HEAD BOLT	M 8X50	2	
17	<b>00 0236 170 0</b>	HEXAGONAL NUT	M8	2	
17	<b>00 0239 387 0</b>	CONTACT WASHER	A8-8,2X18X1,4	2	
18	<b>00 0674 389 4</b>	DIVIDER CEN.PLATE	1000 LANG	2	2)
18	<b>00 0670 372 3</b>	DIVIDER CEN.PLATE	840 LANG	2	3)
19	<b>00 0520 020 0</b>	DIVIDER POINT	.	2	
20	<b>00 0237 383 0</b>	HEXAGON HEAD BOLT	M10X25	4	
20	<b>00 0236 171 0</b>	HEXAGONAL NUT	M10	4	
20	<b>00 0239 388 0</b>	CONTACT WASHER	A10-10,2X22,25X1,6	4	
21	<b>00 0612 567 0</b>	OUTER DIVIDER	2600 LANG	2	2)
21	<b>00 0612 583 1</b>	OUTER DIVIDER	2100 LANG	2	3)

**1) Remarks**

Var. 2556 = Long Divider  
 Var. 2527 = Short Divider

**2) Remarks**

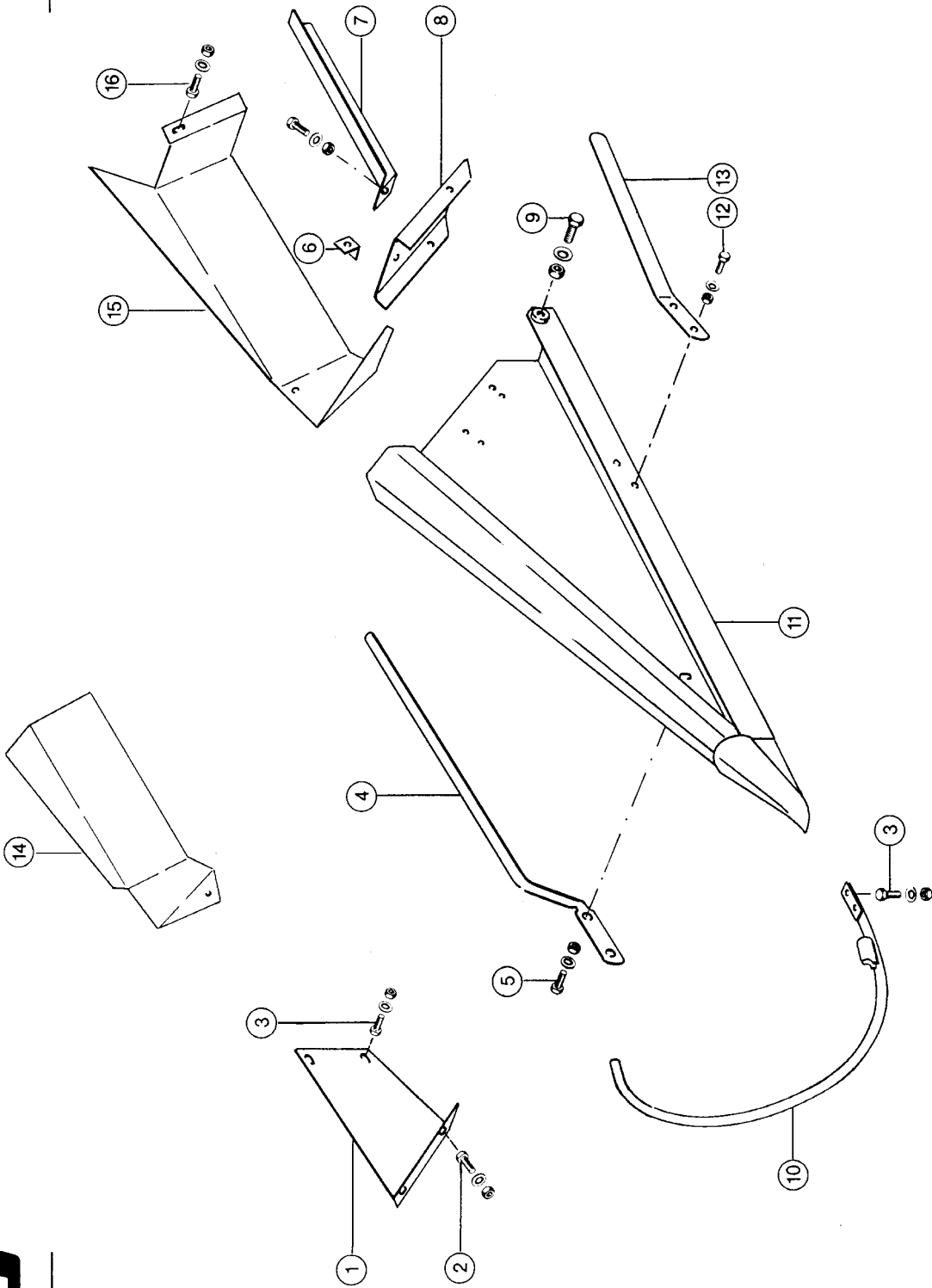
long

**3) Remarks**

short

2

Dominator 68



**CLAVIS**

**SPECIAL CROP DIVIDER, VAR. 4282 1)**

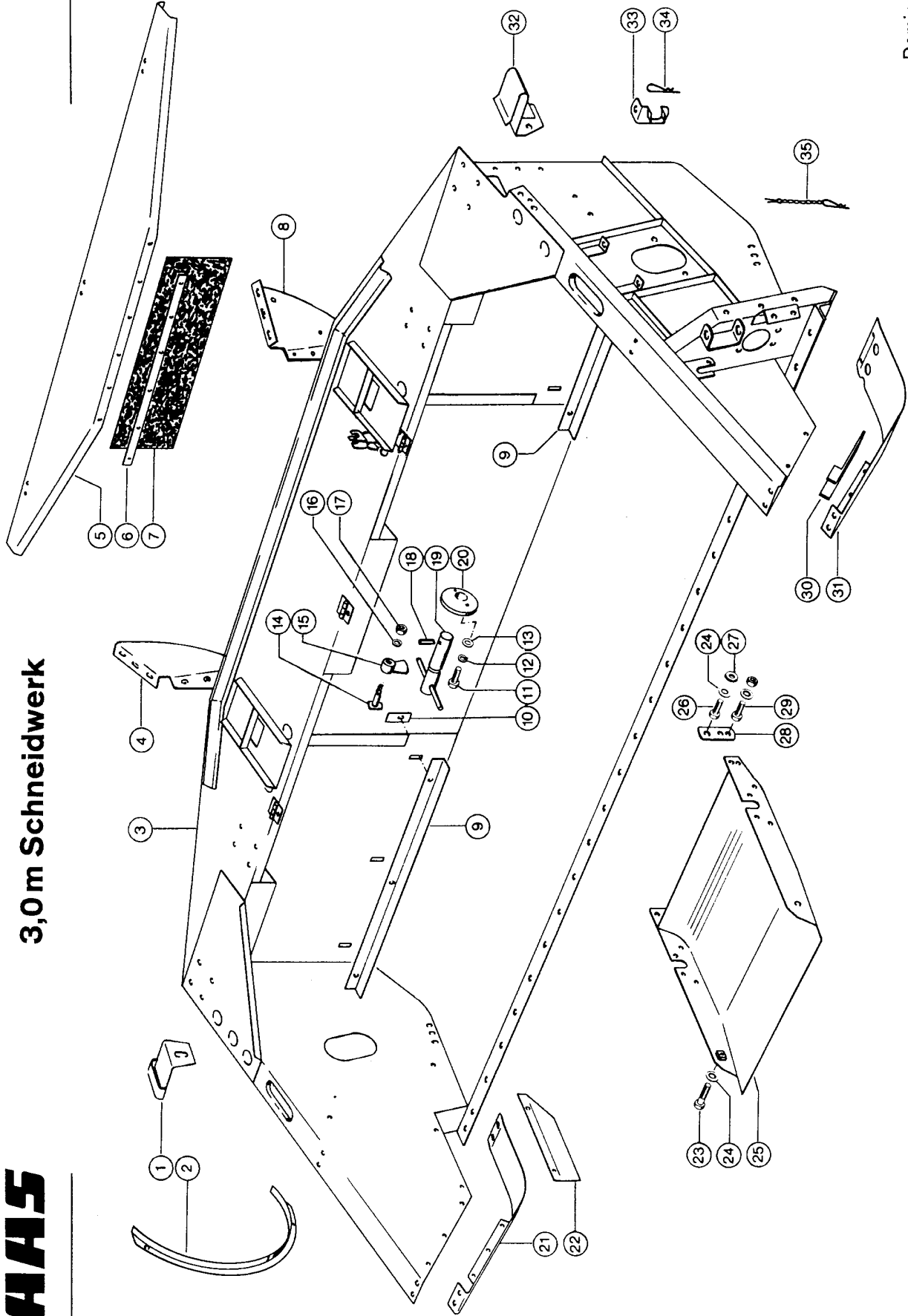
Pos.	Part No.	Description	Dimension	Quantity	Conditions
1	<b>00 0688 980 0</b>	SUPPORT R.H.	4X156X381,5	1	2)
2	<b>00 0237 423 0</b>	HEXAGON HEAD BOLT	M10X28	3	
2	<b>00 0236 171 0</b>	HEXAGONAL NUT	M10	3	
2	<b>00 0239 388 0</b>	CONTACT WASHER	A10-10,2X22,25X1,6	3	
3	<b>00 0237 442 0</b>	HEXAGON HEAD BOLT	M8X25	6	
3	<b>00 0236 170 0</b>	HEXAGONAL NUT	M8	6	
3	<b>00 0239 387 0</b>	CONTACT WASHER	A8-8,2X18X1,4	6	
4	<b>00 0688 975 1</b>	DEFLECTOR INNER		2	
5	<b>00 0234 953 0</b>	COACH BOLT	M8X20X13	4	
5	<b>00 0236 170 0</b>	HEXAGONAL NUT	M8	4	
5	<b>00 0239 387 0</b>	CONTACT WASHER	A8-8,2X18X1,4	4	
6	<b>00 0671 364 0</b>	SCREW-ON ANGLE	30X5X79	2	3)
7	<b>00 0688 977 0</b>	SUPPORT L.H.		1	4)
8	<b>00 0688 974 1</b>	SUPPORT	4X161X200	2	
9	<b>00 0236 056 0</b>	HEXAGON HEAD BOLT	M12X25	4	
9	<b>00 0236 172 0</b>	HEXAGONAL NUT	M12	4	
9	<b>00 0239 389 0</b>	CONTACT WASHER	A12	4	
10	<b>00 0688 025 0</b>	BEND DIVIDER		2	5)
11	<b>00 0688 969 1</b>	DIVIDER L.H.		1	
11	<b>00 0688 970 1</b>	DIVIDER R.H.		1	
12	<b>00 0237 439 0</b>	HEXAGON HEAD BOLT	M8X16	4	
12	<b>00 0236 170 0</b>	HEXAGONAL NUT	M8	4	
12	<b>00 0239 387 0</b>	CONTACT WASHER	A8-8,2X18X1,4	4	
13	<b>00 0688 976 0</b>	DEFLECTOR OUTER	3,0X0030X0400	2	
14	<b>00 0615 535 1</b>	DEFLECTOR R.H.	1,5X0264X0600	1	
15	<b>00 0615 534 1</b>	DEFLECTOR L.H.	1,5X0264X0600	1	
16	<b>00 0237 439 0</b>	HEXAGON HEAD BOLT	M8X16	2	
16	<b>00 0236 170 0</b>	HEXAGONAL NUT	M8	2	
16	<b>00 0239 387 0</b>	CONTACT WASHER	A8-8,2X18X1,4	4	

<b>1)</b>	<b>Remarks</b>	optional
<b>2)</b>	<b>Remarks</b>	for right side
<b>3)</b>	<b>Remarks</b>	only for rice
<b>4)</b>	<b>Remarks</b>	for left side
<b>5)</b>	<b>Remarks</b>	optional

**CLAAS**

**3,0 m Schneidwerk**

**3**



101961

Dominator 68

**CUTTERBAR DRIVE 1)**

Pos.	Part No.	Description	Dimension	Quantity	Conditions
1	<b>00 0604 372 0</b>	SUPPORT		1	
2	<b>00 0603 984 1</b>	DEFLECTOR	23X19X2,25X442	2	
3	<b>00 0604 324 2</b>	TROUGH		1	
4	<b>00 0670 152 3</b>	GUSSET PLATE R.H.	5X390X261	1	
5	<b>00 0688 102 3</b>	DUST SHIELD	1,5X265X1400	1	2)
5	<b>00 0688 102 3</b>	DUST SHIELD	1,5X265X1400	1	3)
6	<b>00 0688 106 0</b>	COUNTER STRIP	16X2X570	1	3)
7	<b>00 0688 104 0</b>	RUBBER PROTECTION	1,5X200X580	1	3)
8	<b>00 0688 098 1</b>	GUSSET PLATE L.H.	ERS.D.6880982	1	
9	<b>00 0604 240 0</b>	ANGLE	3X70X722	1	
10	<b>00 0604 340 0</b>	SHUTTER DISK	2X20X60	6	
11	<b>00 0237 461 0</b>	HEXAGON HEAD BOLT	M12X30	2	
11	<b>00 0237 820 0</b>	HEXAGON HEAD BOLT	M12X90	2	
12	<b>00 0239 389 0</b>	CONTACT WASHER	A12	4	
13	<b>00 0235 124 3</b>	FLAT WASHER	12- 13X24X2,5	16	
14	<b>00 0653 251 1</b>	PIN	16XH11X19X36	2	
15	<b>00 0670 155 2</b>	FUSE		2	
16	<b>00 0239 389 0</b>	CONTACT WASHER	A12	2	
17	<b>00 0236 172 0</b>	HEXAGONAL NUT	M12	1	
18	<b>00 0244 578 0</b>	SPRING PIN	10 X 40 -ST	2	
19	<b>00 0670 160 2</b>	BOLT		2	
20	<b>00 0670 156 1</b>	GUIDE		2	
21	<b>00 0603 925 0</b>	OUTER SHOE RH.	5X120X800	1	
22	<b>00 0604 253 1</b>	GUARD PLATE R.H.	1,5X124X280	1	
23	<b>00 0237 372 0</b>	HEXAGON HEAD BOLT	M12X 55	6	
24	<b>00 0239 389 0</b>	CONTACT WASHER	A12	12	
25	<b>00 0603 902 0</b>	SKID SHOE		3	
26	<b>00 0237 461 0</b>	HEXAGON HEAD BOLT	M12X30	6	
27	<b>00 0233 138 0</b>	WASHER	13X26X6	6	
28	<b>00 0603 899 1</b>	CONNECTING PLATE	30X10X98	6	
29	<b>00 0237 461 0</b>	HEXAGON HEAD BOLT	M12X30	6	
29	<b>00 0236 172 0</b>	HEXAGONAL NUT	M12	6	
29	<b>00 0239 389 0</b>	CONTACT WASHER	A12	6	
30	<b>00 0603 868 1</b>	DIVIDER SUPPORT		2	
31	<b>00 0603 924 1</b>	OUTER SHOE LH.	5X187X800	1	
32	<b>00 0604 368 1</b>	ANGLE		1	
33	<b>00 0604 460 0</b>	SUPPORT		1	
34	<b>00 0665 666 0</b>	SPRING CLIP	3X90	1	
35	<b>00 0673 763 0</b>	LOCK CHAIN		2	

**1) Remarks** 3,0 m Width  
Up To Cutterbar No. 255806

**2) Remarks** from cutterbar 246000

**3) Remarks** to cutterbar 245999

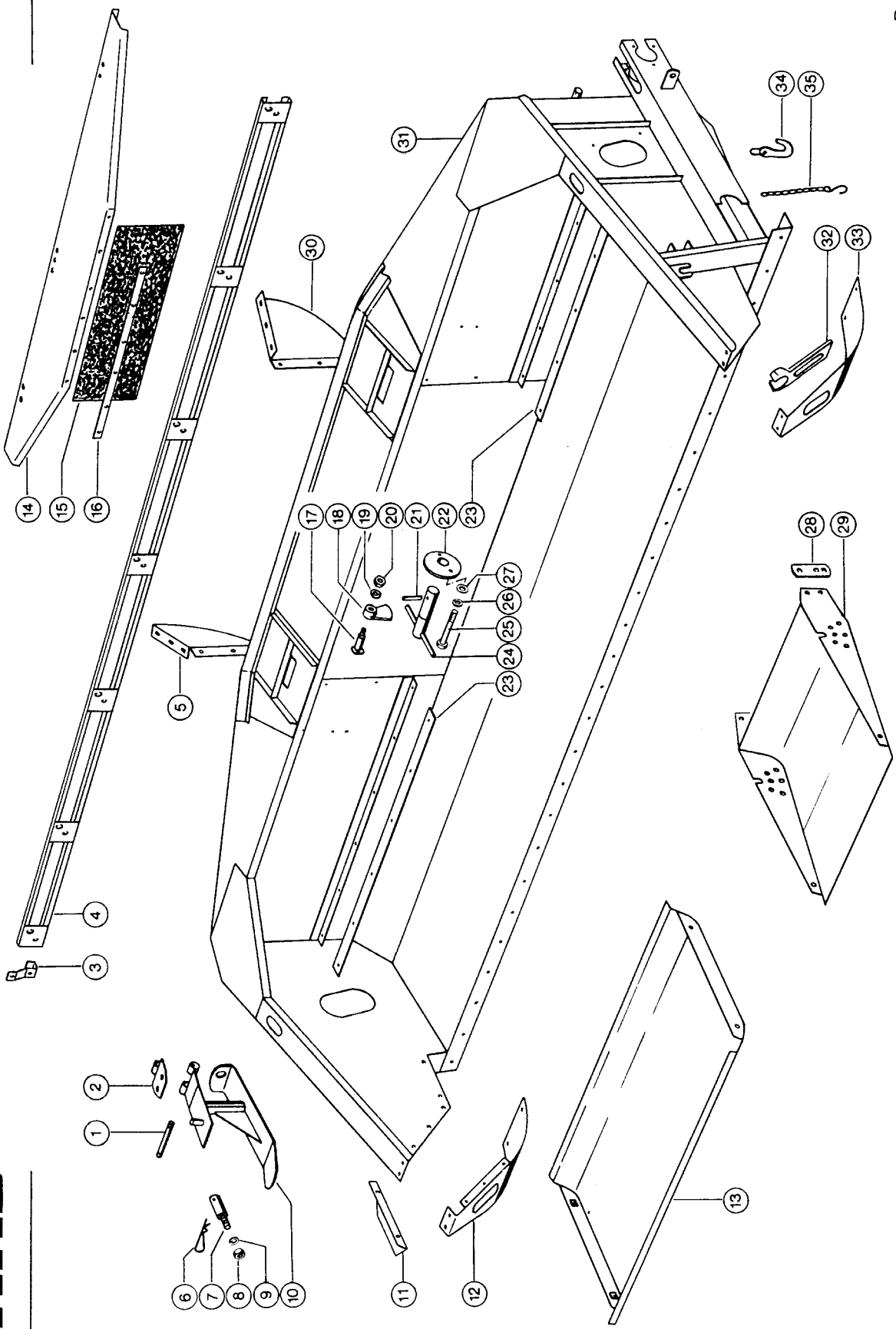
**CLAAS**

**3,6 m – 5,1 m Schneidwerk**

**4**

Dominator 68

101962



**CUTTERBAR DRIVE 1)**

Pos.	Part No.	Description	Dimension	Quantity	Conditions
1	<b>00 0677 758 0</b>	PIN	15H9X 88	1	
2	<b>00 0677 752 1</b>	SUPPORTING PLATE		1	
3	<b>00 0677 803 2</b>	SUPPORT	25X5X154	4	
4	<b>00 0688 167 0</b>	KNIFE SUPPORT		1	2)
4	<b>00 0688 168 0</b>	KNIFE SUPPORT	3,9 M	1	3)
4	<b>00 0690 492 0</b>	KNIFE SUPPORT	4,2 M	1	4)
4	<b>00 0688 169 0</b>	KNIFE SUPPORT	4,5 M	1	5)
4	<b>00 0688 170 0</b>	KNIFE SUPPORT	5,1 M 17'	1	6)
5	<b>00 0670 152 3</b>	GUSSET PLATE R.H.	5X390X261	1	
6	<b>00 0673 749 0</b>	SPRING CLIP	4,5X90	1	
7	<b>00 0765 233 0</b>	BEARING BOLT	D20X 65	1	
8	<b>00 0236 172 0</b>	HEXAGONAL NUT	M12	1	
9	<b>00 0239 389 0</b>	CONTACT WASHER	A12	1	
10	<b>00 0677 749 2</b>	SUPPORT		1	
11	<b>00 0604 253 1</b>	GUARD PLATE R.H.	1,5X124X280	1	
12	<b>00 0670 066 4</b>	OUTER SHOE RH.	5X126X836	1	
13	<b>00 0673 781 4</b>	SKID SHOE		1	
14	<b>00 0688 102 3</b>	DUST SHIELD	1,5X265X1400	1	7)
14	<b>00 0688 102 3</b>	DUST SHIELD	1,5X265X1400	1	8)
15	<b>00 0688 104 0</b>	RUBBER PROTECTION	1,5X200X580	1	8)
16	<b>00 0688 106 0</b>	COUNTER STRIP	16X2X570	1	8)
17	<b>00 0653 251 1</b>	PIN	16XH11X19X36	2	
18	<b>00 0670 155 2</b>	FUSE		2	
19	<b>00 0239 389 0</b>	CONTACT WASHER	A12	2	
20	<b>00 0236 172 0</b>	HEXAGONAL NUT	M12	2	
21	<b>00 0244 578 0</b>	SPRING PIN	10 X 40 -ST	2	
22	<b>00 0670 156 1</b>	GUIDE		2	
23	<b>00 0688 053 2</b>	STRIPPER	3X35X1017	2	2)
23	<b>00 0670 074 2</b>	STRIPPER	3X35X1170	2	3)
23	<b>00 0690 497 0</b>	STRIPPER	3X35X1322	2	4)
23	<b>00 0670 282 2</b>	STRIPPER	3X35X1475	2	5)
23	<b>00 0674 251 2</b>	STRIPPER	3X35X1780	2	6)
24	<b>00 0670 160 2</b>	BOLT		2	
25	<b>00 0237 820 0</b>	HEXAGON HEAD BOLT	M12X90	4	
25	<b>00 0237 453 0</b>	HEXAGON HEAD BOLT	M10X30	4	
26	<b>00 0239 389 0</b>	CONTACT WASHER	A12	4	
27	<b>00 0235 124 3</b>	FLAT WASHER	12- 13X24X2,5	16	
28	<b>00 0603 899 1</b>	CONNECTING PLATE	30X10X98	4	
29	<b>00 0603 902 0</b>	SKID SHOE		2	
30	<b>00 0688 098 1</b>	GUSSET PLATE L.H.	ERS.D.6880982	1	
31	<b>00 0688 051 0</b>	TROUGH	3,60M	1	2)
31	<b>00 0677 702 1</b>	TROUGH	3,90M	1	3)
31	<b>00 0690 807 0</b>	TROUGH	4,20M S	1	4)
31	<b>00 0677 704 5</b>	TROUGH	4,50M	1	5)
31	<b>00 0677 706 4</b>	TROUGH	5,10M S	1	6)
32	<b>00 0603 868 1</b>	DIVIDER SUPPORT		2	
33	<b>00 0670 065 3</b>	OUTER SHOE LH.	5X223X836	1	
34	<b>00 0641 214 0</b>	HOOK		1	
35	<b>00 0673 763 0</b>	LOCK CHAIN		2	

**1) Remarks**

3,6 m - 5,1 m Width  
Up To Cutterbar No. 255806

**2) Remarks**

at 3.6 m cutterbar



**CUTTERBAR DRIVE 1)**

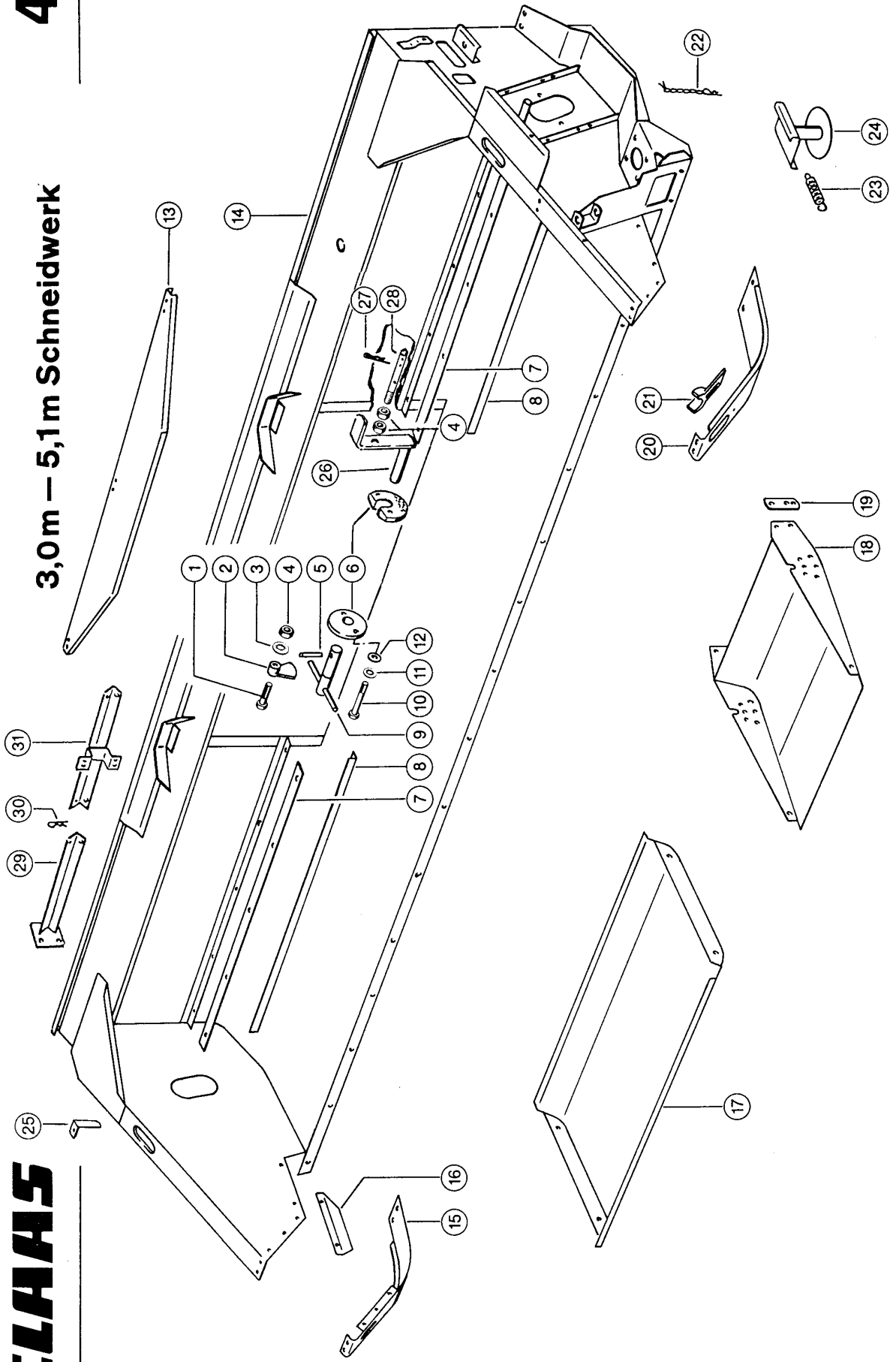
<b>3) Remarks</b>	at 3.9 m cutterbar
<b>4) Remarks</b>	at 4.2 m cutterbar
<b>5) Remarks</b>	at 4.5 m cutterbar
<b>6) Remarks</b>	at 5.1 m cutterbar
<b>7) Remarks</b>	from cutterbar 246000
<b>8) Remarks</b>	to cutterbar 245999

# 4A

## 3,0m – 5,1m Schneidwerk

# CLAAS

DOMINATOR 68



Dominator 68

10 1963 /01

**CUTTERBAR DRIVE 1)**

Pos.	Part No.	Description	Dimension	Quantity	Conditions
1	<b>00 0235 554 0</b>	HEXAGON HEAD BOLT	M12X50	2	
2	<b>00 0670 155 2</b>	FUSE		1	
3	<b>00 0239 389 0</b>	CONTACT WASHER	A12	2	
4	<b>00 0236 172 0</b>	HEXAGONAL NUT	M12	4	2)
5	<b>00 0244 578 0</b>	SPRING PIN	10 X 40 -ST	2	
6	<b>00 0670 156 1</b>	GUIDE		2	
7	<b>00 0650 219 0</b>	STRIPPER	3X35X722	2	3)
7	<b>00 0688 053 2</b>	STRIPPER	3X35X1017	2	4)
7	<b>00 0670 074 2</b>	STRIPPER	3X35X1170	2	5)
7	<b>00 0690 497 0</b>	STRIPPER	3X35X1322	2	6)
7	<b>00 0670 282 2</b>	STRIPPER	3X35X1475	2	7)
7	<b>00 0674 251 2</b>	STRIPPER	3X35X1780	2	8)
8	<b>00 0650 279 0</b>	STRIPPER ANGLE	30X20X3X557,5	2	3)
8	<b>00 0650 281 1</b>	STRIPPER ANGLE	30X20X862,5	2	4)
8	<b>00 0650 297 2</b>	STRIPPER ANGLE	30X20X3X1015	2	5)
8	<b>00 0688 016 1</b>	STRIPPER ANGLE	30X20X3X1167,5	2	6)
8	<b>00 0688 045 2</b>	STRIPPER ANGLE	30X20X3X1320	2	7)
8	<b>00 0688 017 2</b>	STRIPPER ANGLE	30X20X3X1625	2	8)
9	<b>00 0670 160 2</b>	BOLT		1	
10	<b>00 0235 563 0</b>	HEXAGON HEAD BOLT	M12X100	2	
10	<b>00 0237 572 0</b>	HEXAGON HEAD BOLT	M12X35	2	
11	<b>00 0239 389 0</b>	CONTACT WASHER	A12	4	
12	<b>00 0235 124 3</b>	FLAT WASHER	12- 13X24X2,5	16	
13	<b>00 0688 102 3</b>	DUST SHIELD	1,5X265X1400	1	
14	<b>00 0650 210 2</b>	TROUGH	3,00M	1	3)
14	<b>00 0650 220 2</b>	TROUGH	3,60M	1	4)
14	<b>00 0650 230 2</b>	TROUGH	3,90M	1	5)
14	<b>00 0650 240 2</b>	TROUGH	4,20M S	1	6)
14	<b>00 0650 110 3</b>	TROUGH	4,50M S	1	7)
14	<b>00 0650 002 1</b>	CUTTERBAR TABLE	5,10M S	1	8)
14	<b>00 0102 448 0</b>	TYPE PLATE	VORSATZGERAETE	1	
15	<b>00 0650 054 0</b>	OUTER SHOE RH.	5X141X827	1	
16	<b>00 0604 253 1</b>	GUARD PLATE R.H.	1,5X124X280	1	
17	<b>00 0673 781 4</b>	SKID SHOE		1	
18	<b>00 0603 902 0</b>	SKID SHOE		2	
19	<b>00 0603 899 1</b>	CONNECTING PLATE	30X10X98	4	
20	<b>00 0650 049 1</b>	OUTER SHOE LH.	5X219,5X827	1	
21	<b>00 0603 868 1</b>	DIVIDER SUPPORT		2	
22	<b>00 0673 763 0</b>	LOCK CHAIN		2	
23	<b>00 0942 497 0</b>	TENSION SPRING	2,5 X 25 X 96	2	9)
24	<b>00 0645 802 0</b>	SUPPORT		2	9)
25	<b>00 0651 428 1</b>	ANGLE	25X5X76	1	
26	<b>00 0650 916 0</b>	PLUG		2	
27	<b>00 0673 749 0</b>	SPRING CLIP	4,5X90	4	
28	<b>00 0615 756 0</b>	PIN	12H9X140	2	
29	<b>00 0707 865 1</b>	SUPPORT		1	10)
30	<b>00 0665 666 0</b>	SPRING CLIP	3X90	1	11)
31	<b>00 0708 150 1</b>	SUPPORT	2,7-3,0M	1	12)
31	<b>00 0708 151 1</b>	SUPPORT	3,6, 3,9, 4,2M	1	13)

**1) Remarks**

With 3,0 m - 5,1 m Cutterbar  
From Cutterbar No. 255807

**2) Remarks**

(2)

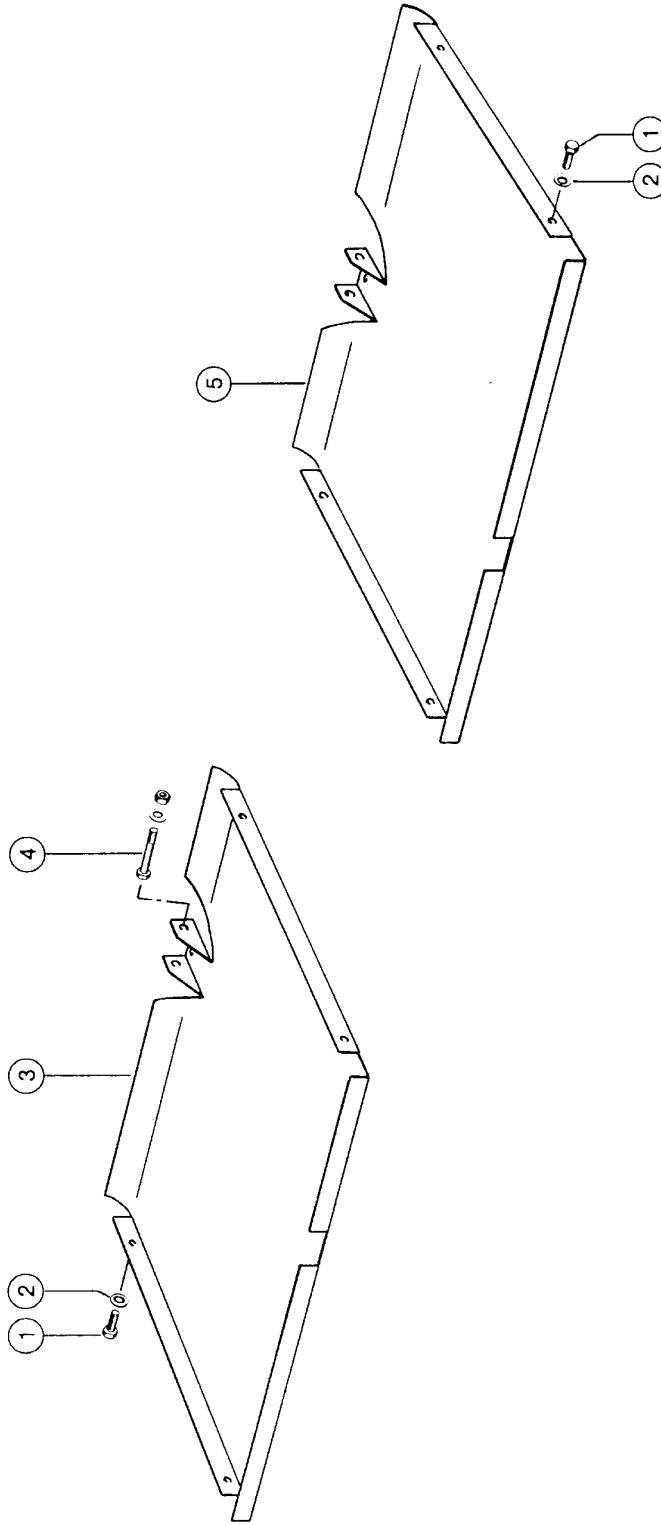
**CUTTERBAR DRIVE 1)**

<b>3) Remarks</b>	at 3.0 m cutterbar
<b>4) Remarks</b>	at 3.6 m cutterbar
<b>5) Remarks</b>	at 3.9 m cutterbar
<b>6) Remarks</b>	at 4.2 m cutterbar
<b>7) Remarks</b>	at 4.5 m cutterbar
<b>8) Remarks</b>	at 5.1 m cutterbar
<b>9) Remarks</b>	(1)
<b>10) Remarks</b>	at 4.5 and 5.1 m
<b>11) Remarks</b>	2
<b>12) Remarks</b>	at 3.0 m
<b>13) Remarks</b>	with 3.6 and 4.2 m

**CLAAS**

**3,6 m – 5,1 m Schneidwerk**

**4B**



101964

Dominator 68

**STONE GUARD, VAR. 4944, 4945, 4946 1)**

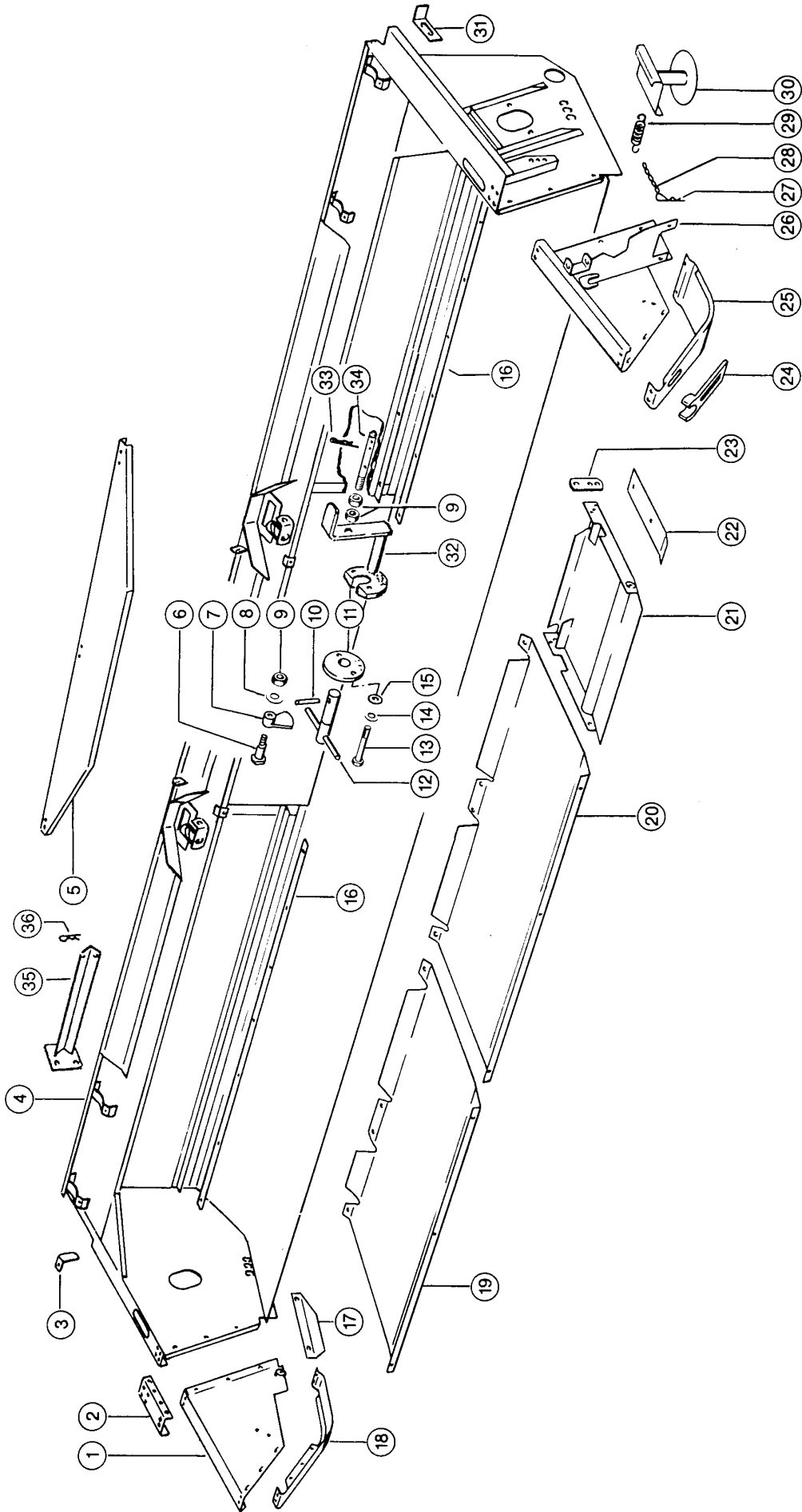
Pos.	Part No.	Description	Dimension	Quantity	Conditions
1	<b>00 0237 383 0</b>	HEXAGON HEAD BOLT	M10X25	8	
2	<b>00 0239 388 0</b>	CONTACT WASHER	A10-10,2X22,25X1,6	8	
3	<b>00 0650 313 0</b>	STONE GUARD, R.H.	661 LANG	1	2)
3	<b>00 0650 318 0</b>	STONE GUARD, R.H.	814 LANG	1	3)
3	<b>00 0650 323 0</b>	STONE GUARD, R.H.	966 LANG	1	4)
3	<b>00 0650 328 0</b>	STONE GUARD, R.H.	1119 LANG	1	5)
3	<b>00 0688 021 0</b>	STONE GUARD, R.H.	1424 LANG	1	6)
4	<b>00 0235 223 1</b>	HEXAGON HEAD BOLT	M10X100	2	
4	<b>00 0236 171 0</b>	HEXAGONAL NUT	M10	2	
4	<b>00 0239 388 0</b>	CONTACT WASHER	A10-10,2X22,25X1,6	2	
4	<b>00 0236 913 2</b>	FLAT WASHER	10-10,5X20X2	2	
5	<b>00 0650 312 0</b>	STONE GUARD, L.H.	661 LANG	1	2)
5	<b>00 0650 317 0</b>	STONE GUARD, L.H.	814 LANG	1	3)
5	<b>00 0650 322 0</b>	STONE GUARD, L.H.	966 LANG	1	4)
5	<b>00 0650 327 0</b>	STONE GUARD, L.H.	1119 LANG	1	5)
5	<b>00 0688 020 0</b>	STONE GUARD, L.H.	1424 LANG	1	6)

<b>1) Remarks</b>	Option From Cutterbar No. 255806
<b>2) Remarks</b>	at 3.6 m cutterbar
<b>3) Remarks</b>	at 3.9 m cutterbar
<b>4) Remarks</b>	at 4.2 m cutterbar
<b>5) Remarks</b>	at 4.5 m cutterbar
<b>6) Remarks</b>	at 5.1 m cutterbar

**4C**

5,1 m Schneidwerk  
"VERSTÄRKT"

**CLAAS**



101965

Dominator 68

Thank you so much for reading.  
Please click the “Buy Now!”  
button below to download the  
complete manual.



After you pay.

You can download the most  
perfect and complete manual in  
the world immediately.

Our support email:

[ebooklibonline@outlook.com](mailto:ebooklibonline@outlook.com)