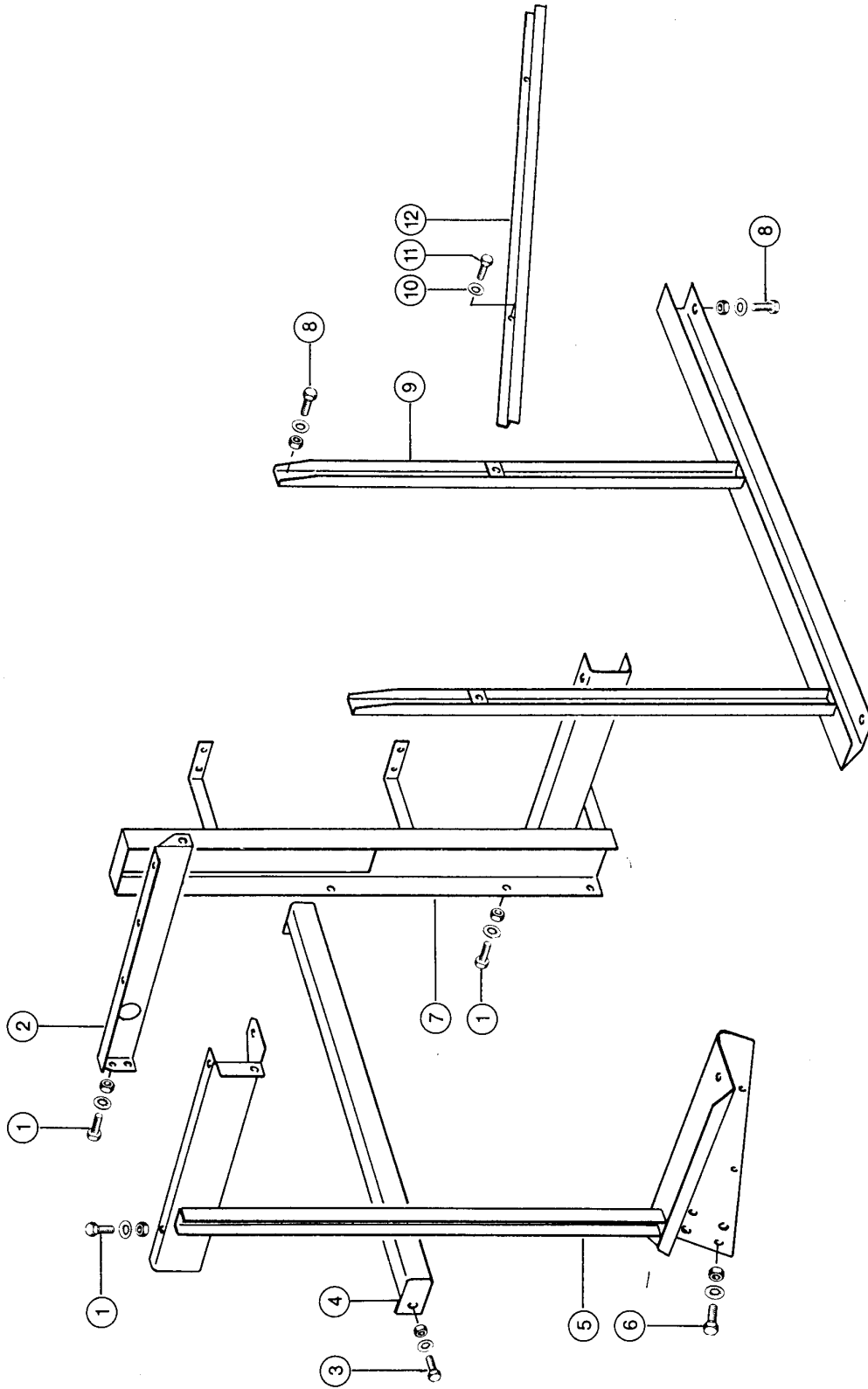


329

Lexion 480



CLAAS

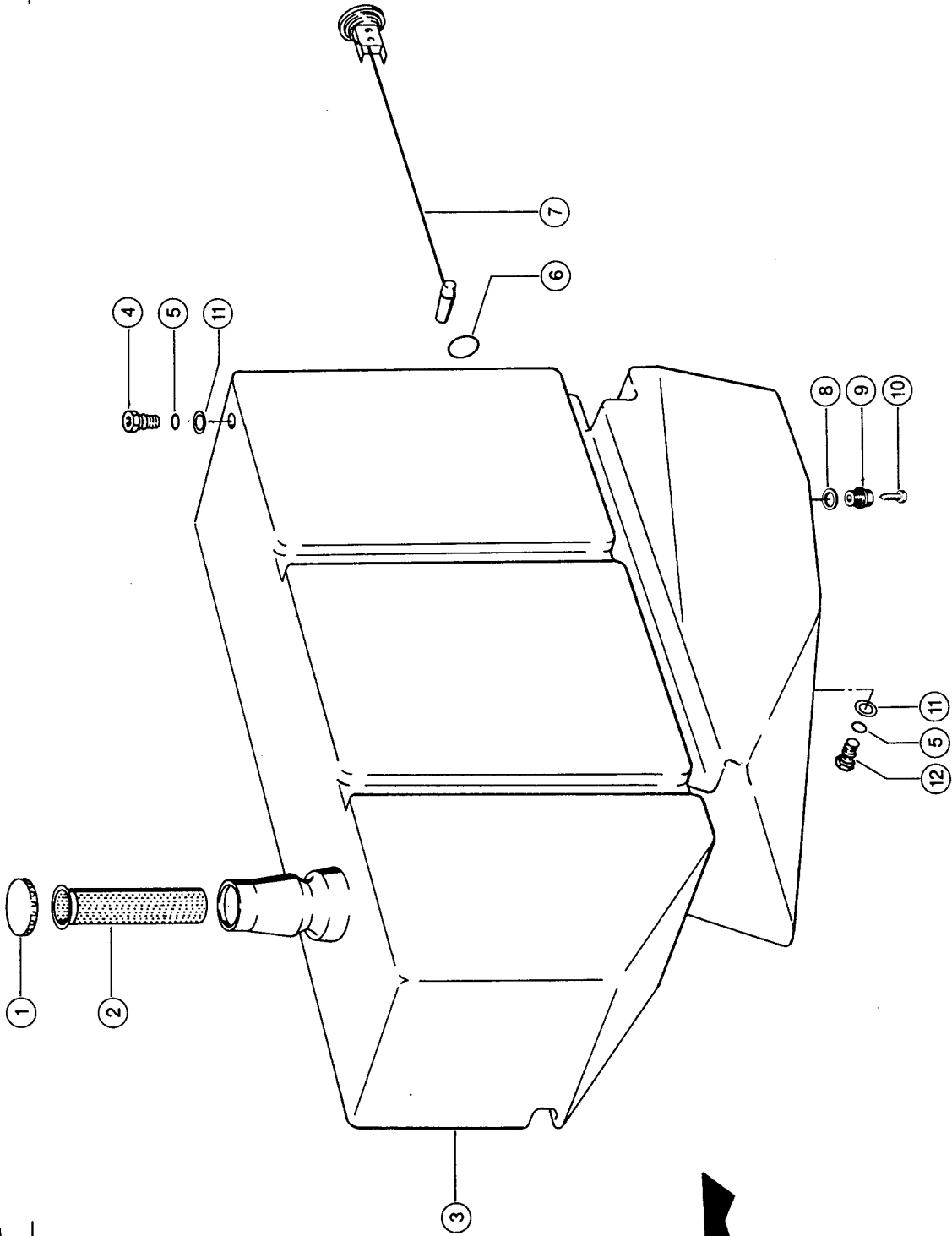
106404

BRACKET FOR FUEL TANK

Pos.	Part No.	Description	Dimension	Quantity	Conditions
1	00 0237 570 0	HEXAGON HEAD BOLT	M10X16	8	
1	00 0236 171 0	HEXAGONAL NUT	M10	8	
1	00 0239 388 0	CONTACT WASHER	A10-10,2X22,25X1,6	8	
2	00 0748 878 0	SUPPORT	3X161,6X602,1	1	
3	00 0244 138 0	HEXAGON HEAD BOLT	M 8X18	4	1)
3	00 0236 170 0	HEXAGONAL NUT	M8	4	1)
3	00 0239 387 0	CONTACT WASHER	A8-8,2X18X1,4	4	1)
4	00 0736 235 2	BRACE		2	2)
5	00 0736 244 5	SUPPORT		1	
6	00 0237 458 0	HEXAGON HEAD BOLT	M12X20	4	
6	00 0236 172 0	HEXAGONAL NUT	M12	4	
6	00 0239 389 0	CONTACT WASHER	A12	4	
7	00 0755 588 1	TANK SUPPORT		1	3)
7	00 0736 252 3	TANK SUPPORT		1	4)
8	00 0237 382 0	HEXAGON HEAD BOLT	M10X20	4	
8	00 0236 171 0	HEXAGONAL NUT	M10	4	
8	00 0239 388 0	CONTACT WASHER	A10-10,2X22,25X1,6	4	
9	00 0736 247 2	TANK SUPPORT		1	
10	00 0239 388 0	CONTACT WASHER	A10-10,2X22,25X1,6	2	
11	00 0237 570 0	HEXAGON HEAD BOLT	M10X16	2	
12	00 0751 032 0	REINFORCING PLATE	3X79.6X1489	1	
1)	Remarks			(2)	
2)	Remarks			(1)	
3)	Remarks			from No. 46601475	
4)	Remarks			to No. 46601474	

330

Lexion 480



CLAAS

106405

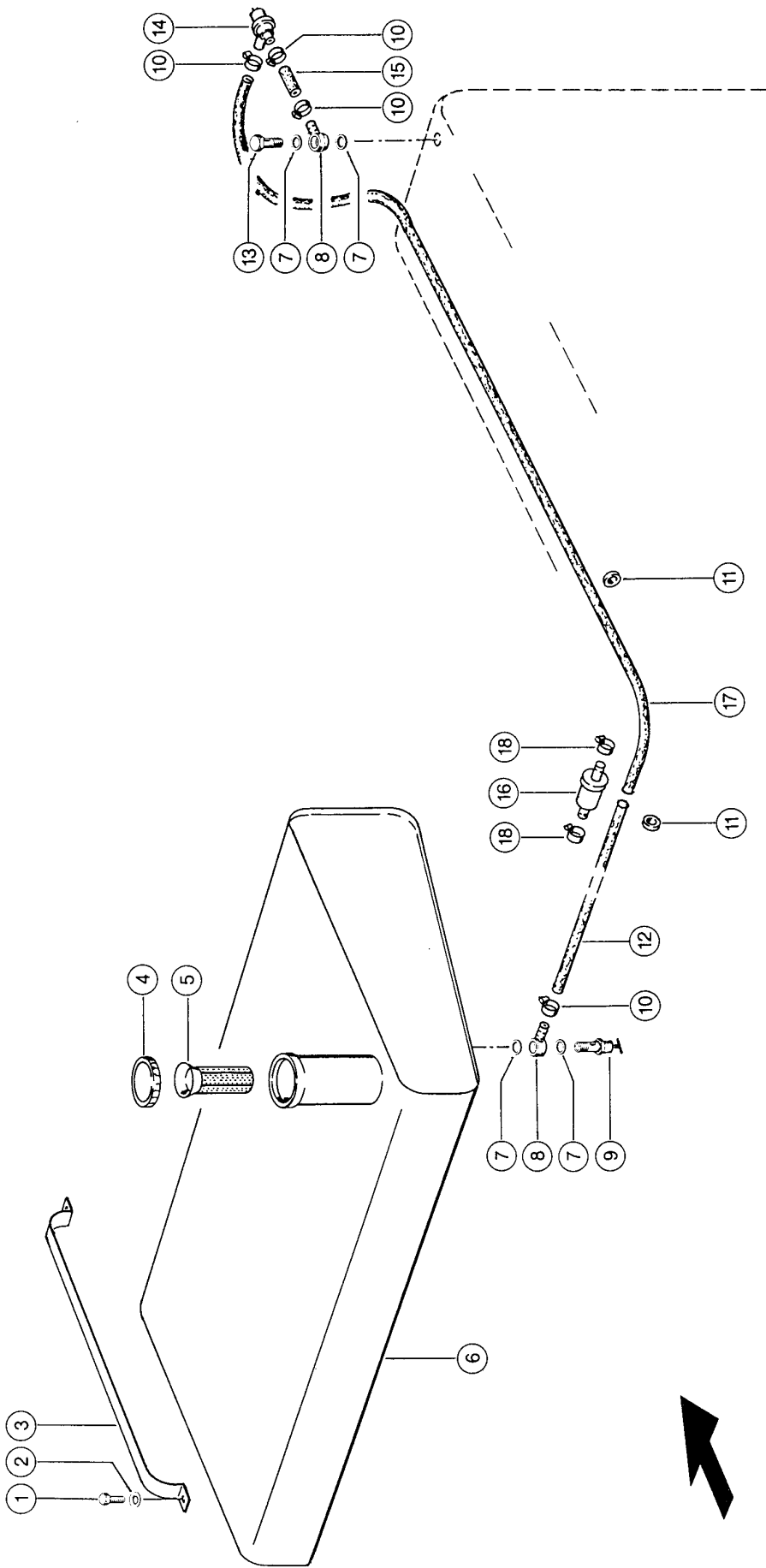
FUEL TANK

Pos.	Part No.	Description	Dimension	Quantity	Conditions
1	00 0624 003 1	CAP	DV 80 GL	1	
1	00 0177 621 0	CAP	D80 BELUEFTET, ABSCHLIES	1	1)
1	00 0177 622 0	SPARE KEY	C5	1	2)
2	00 0736 238 0	TANK FILTER		1	
3	00 0736 242 4	FUEL TANK	650 L	1	3)
4	00 0736 256 2	THREADED INSET	6KT32X48	2	
5	00 0215 956 1	O-RING	18,4X5,33-N	3	4)
6	00 0672 996 0	GASKET		1	
7	00 0736 243 0	LEVEL INDICATOR		1	5)
8	00 0215 958 1	FLAT SEAL RING	30X40X3	1	
9	00 0687 607 0	DRAIN SCREW	M33X2	1	
10	00 0687 625 1	HEXAGON HEAD BOLT	M8X17 F. TANK WASSERABLA	1	
11	00 0233 131 0	WASHER	28X 42X 1	3	6)
12	00 0758 716 0	THREADED PLUG	6KT32X48	1	7)

1)	Remarks	Lockable
2)	Remarks	FUER 177621.0
3)	Remarks	with Item 1, 2
4)	Remarks	(2)
5)	Remarks	with Item 6
6)	Remarks	(2) From No. 46600398
7)	Remarks	from no. 46601131

330A

CLAAS



Lexion 480

116957

ADDITIONAL FUEL TANK 1)

Pos.	Part No.	Description	Dimension	Quantity	Conditions
1	00 0237 444 0	HEXAGON HEAD BOLT	M8-45	4	
2	00 0239 393 1	CONTACT WASHER	B 8 -8.2X22X1,9	4	
3	00 0755 926 0	BANDAGE	3X30X923,8	2	
4	00 0624 003 1	CAP	DV 80 GL	1	
5	00 0659 565 2	TANK SIEVE INCLUDED WITH TANK		1	
6	00 0755 919 0	ADDITIONAL TANK		1	
7	00 0633 114 1	FLAT SEAL RING	D 14X20X1,5	4	
8	00 0215 168 0	RING PIECE	E10-10	2	
9	00 0723 651 0	HOLLOW SCREW		1	
10	00 0408 552 2	HOSE CLAMP	A-12-22X9	4	2)
11	00 0215 409 0	GROMMET	C 10-18X30X1,5	2	
12	00 0205 612 0	HOSE	TYP E 9X15	1	3)
13	00 0750 782 0	HOLLOW SCREW	10-3-S -M14X1,5X42-61 BOH		
14	00 0755 465 0	SHUT OFF VALVE		1	
15	00 0205 612 0	HOSE	TYP E 9X15	1	4)
16	00 0755 527 0	FUEL FILTER INSERT WITH O RING		1	
17	00 0205 612 0	HOSE	TYP E 9X15	1	5)
18	00 0237 814 0	2-EAR CLAMP	13-15	2	

1) Remarks	P 03 / 70 From No. 46600701 Standard
-------------------	---

2) Remarks	(6)
-------------------	-----

3) Remarks	1200 long
-------------------	-----------

4) Remarks	50 long
-------------------	---------

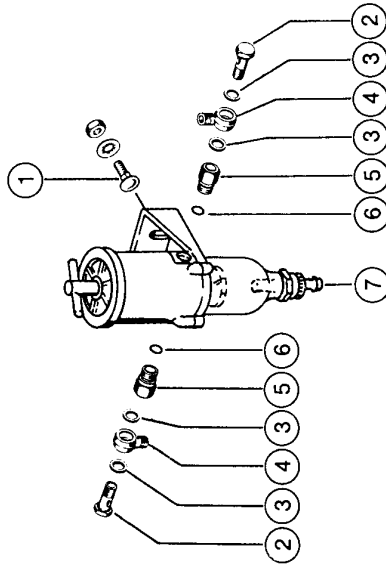
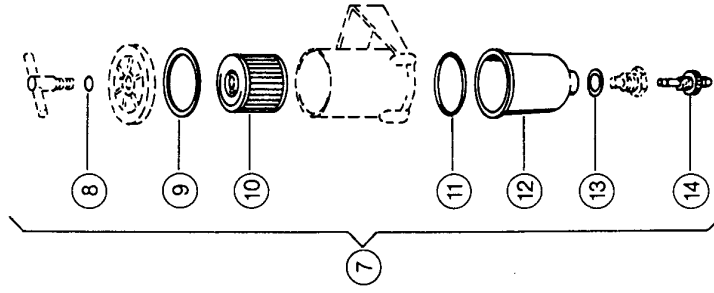
5) Remarks	2200 long
-------------------	-----------

331

CLAAS

LEXION 480

Lexion 480



106406

ADDITIONAL FUEL FILTER 1)

Pos.	Part No.	Description	Dimension	Quantity	Conditions
1	00 0234 953 0	COACH BOLT	M8X20X13	2	
1	00 0236 170 0	HEXAGONAL NUT	M8	2	
1	00 0239 387 0	CONTACT WASHER	A8-8,2X18X1,4	2	
2	00 0096 029 0	HOLLOW SCREW	10 - 3 - M14X1,5	2	
3	00 0633 114 1	FLAT SEAL RING	D 14X20X1,5	4	
4	00 0215 168 0	RING PIECE	E10-10	2	
5	00 0723 650 0	SCREW UNION	6KT19X27,5	2	
6	00 0238 191 0	O-RING	11,3 X2,4 -N	2	
7	00 0723 646 0	SEPARATOR		1	
8	00 0211 091 2	O-RING	12 X 2 NBR 80	1	
9	00 0723 699 0	GASKET	F. RACOR 500 FG	1	
10	00 0723 697 1	SIEVE INSERT		1	
11	00 0723 696 0	O-RING	85 X3,55	1	
12	00 0723 695 0	INSPECTION GLASS		1	
13	00 0723 694 1	GASKET	RACOR 500/900 FG	1	
14	00 0723 693 0	DRAIN SCREW		1	

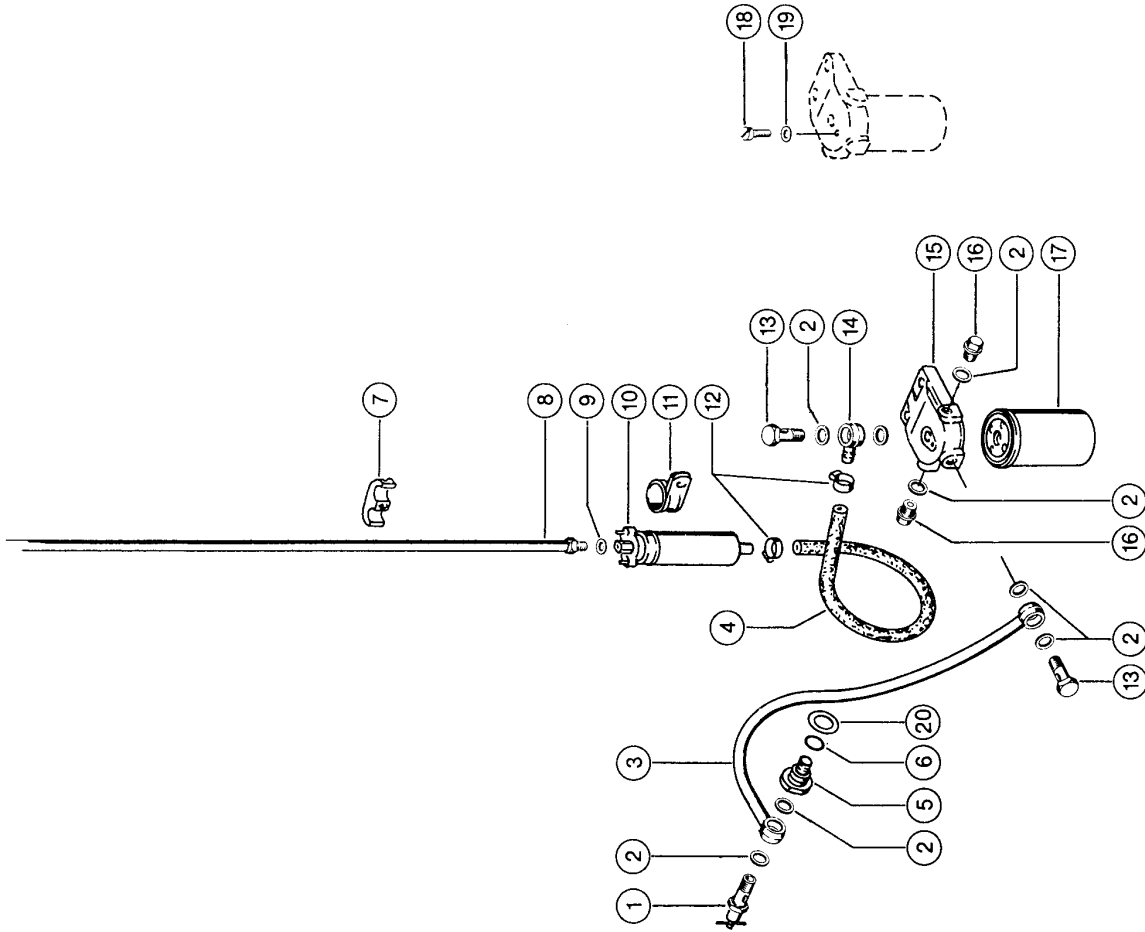
1) Remarks

P 06 / 10

Option

332

Lexion 480



CLAAS

106407

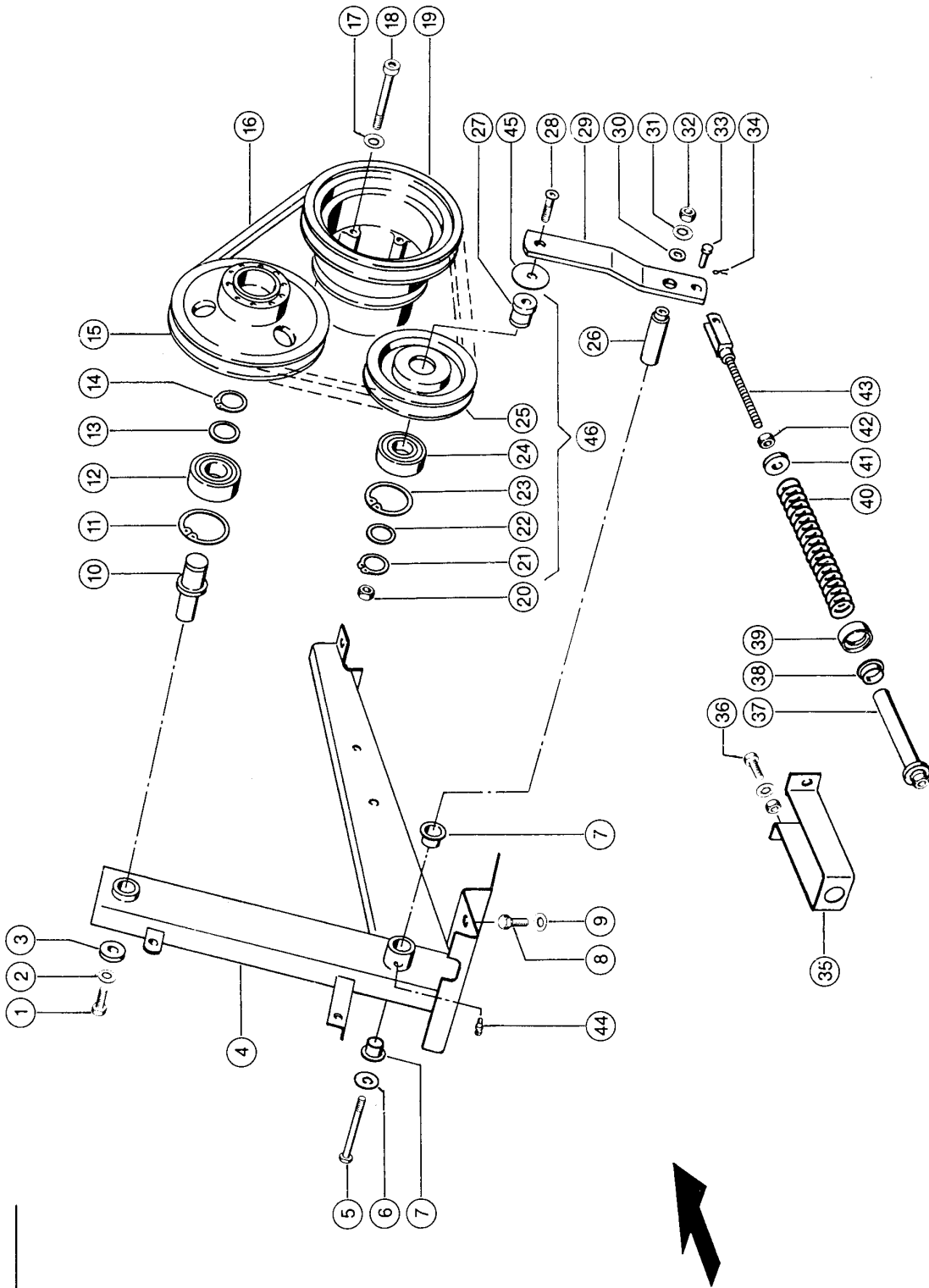
FUEL SYSTEM

Pos.	Part No.	Description	Dimension	Quantity	Conditions
1	00 0723 651 0	HOLLOW SCREW		1	
2	00 0633 114 1	FLAT SEAL RING	D 14X20X1,5	8	
3	00 0649 148 0	FUEL PIPE		1	
3	00 0239 331 0	CONNECTION	R14- 8	2	
4	00 0205 524 2	HOSE	11X3,5 ROLLE, LSN NOTWEN	1	1)
5	00 0736 256 1	THREADED INSET	6KT32X48	1	
6	00 0215 956 1	O-RING	18,4X5,33-N	1	
7	00 0723 500 0	DOUBLE CLAMP	B 10	2	
8	00 0668 345 0	FUEL PIPE	3400 LG	1	2)
8	00 0760 927 0	FUEL PIPE	4950 LG	1	3)
8	00 0668 345 0	FUEL PIPE	3400 LG	1	4)
8	00 0239 331 0	CONNECTION	R14- 8	1	
8	00 0657 838 0	CONNECTION	DN 8 - M10X1	1	
9	00 0244 842 0	SEALING RING	A10 X14	1	
10	00 0761 153 0	ELECTR. FUEL PUMP		1	2)
10	00 0657 836 1	ELECTR. FUEL PUMP	DIESEL U. RME	1	5)
11	00 0211 239 0	HOLDER CLAMP	D1-43X25	1	
12	00 0408 552 2	HOSE CLAMP	A-12-22X9	2	
13	00 0096 029 0	HOLLOW SCREW	10 - 3 - M14X1,5	2	
14	00 0215 168 0	RING PIECE	E10-10	1	
15	00 0656 504 2	COVER		1	
16	00 0633 154 0	SCREW PLUG	M14X1,5	2	
17	00 0649 500 1	FUEL FILTER		1	
18	00 0656 502 1	BREATHER SCREW	M6X 10-MOD	1	
19	00 0233 416 0	SEALING RING	A 6X10X1	1	
20	00 0233 131 0	WASHER	28X 42X 1	1	6)

1)	Remarks	430 long
2)	Remarks	from No. 46600862
3)	Remarks	No. 46600488-46600861
4)	Remarks	to No. 46600487
5)	Remarks	to No. 46600861
6)	Remarks	from No. 45500398

212

Lexion 480



CLAAS

111345

DRIVE GP-FAN

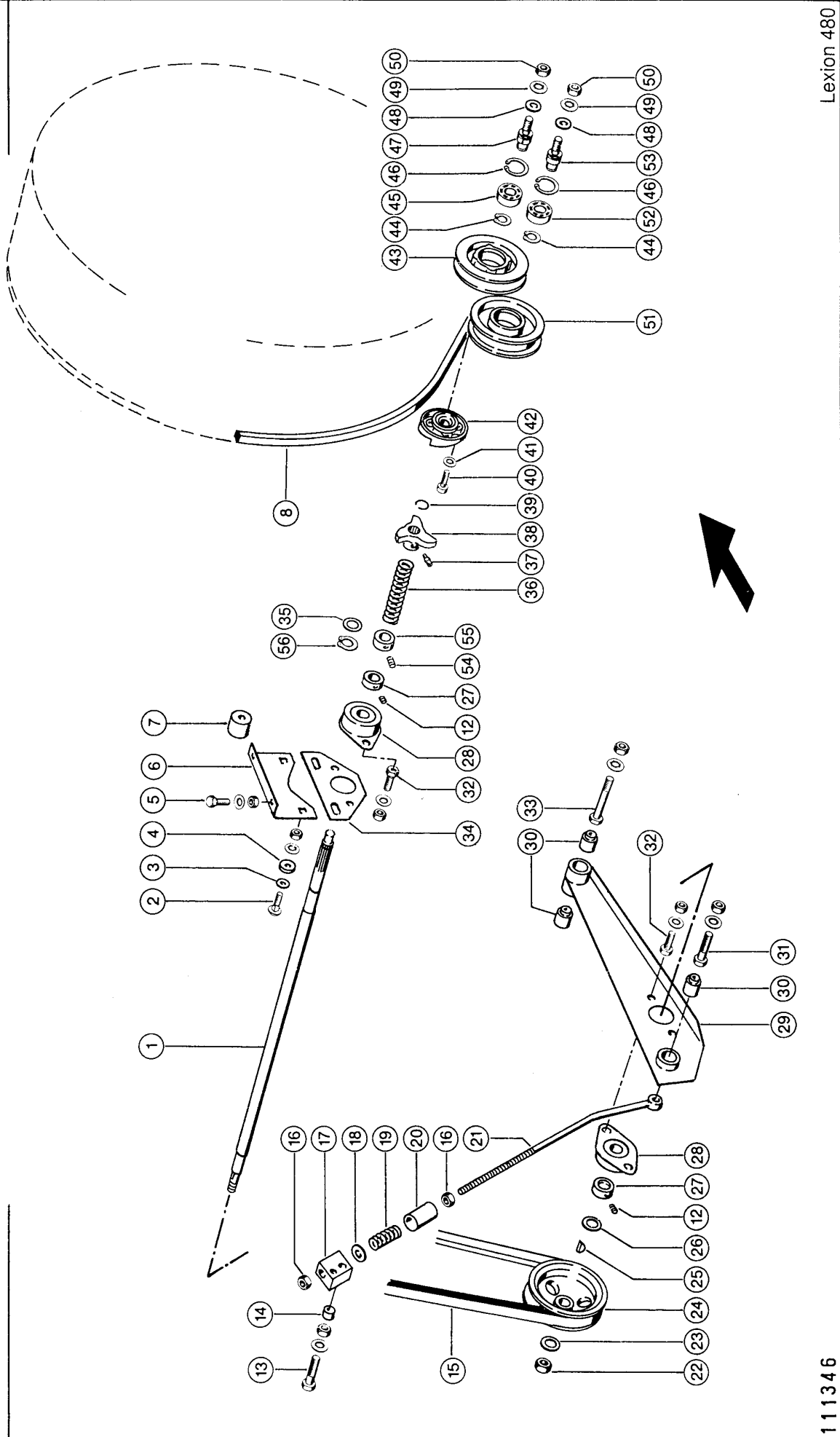
Pos.	Part No.	Description	Dimension	Quantity	Conditions
1	00 0237 423 0	HEXAGON HEAD BOLT	M10X28	1	
2	00 0239 388 0	CONTACT WASHER	A10-10,2X22,25X1,6	1	
3	00 0665 840 0	WASHER	10,5X40X5	1	
4	00 0752 253 0	FAN SUPPORT		1	
5	00 0090 028 0	HEXAGON HEAD BOLT	M10X110	1	
6	00 0234 277 0	WASHER	11X37X2	1	
7	00 0008 545 0	BEARING BUSH	26X30X15	2	
8	00 0237 383 0	HEXAGON HEAD BOLT	M10X25	4	
9	00 0239 388 0	CONTACT WASHER	A10-10,2X22,25X1,6	4	
10	00 0668 165 1	AXLE	D45X105,4	1	
11	00 0236 318 0	CIRCLIP	80X2,5	1	
12	00 0215 960 0	ANG. BALL BEARING	3307-2RS -35X80X34,9	1	
13	00 0234 385 0	BACK-UP WASHER	S 35X45	1	
14	00 0235 164 0	CIRCLIP	35X1,5	1	
15	00 0761 758 0	FAN HUB	D234X127,2	1	1)
15	00 0760 897 0	V-BELT PULLEY	D234X114,2	1	2)
15	00 0752 294 0	FAN HUB	D250X114,2	1	3)
15	00 0668 163 0	FAN HUB	D250X92,1	1	4)
16	00 0667 242 0	V-BELT		1	
17	00 0236 431 1	WASHER	8 -8,1X12,7X2	6	
18	00 0215 962 0	SOCKET HEAD SCREW	M 8X 90	6	
19	00 0668 162 0	V-BELT PULLEY	D250X167,9	1	
20	00 0236 171 0	HEXAGONAL NUT	M10	1	
21	00 0235 163 0	CIRCLIP	30X1,5	1	
22	00 0236 771 1	SHIM	30X42X1,5	1	
23	00 0235 186 0	CIRCLIP	72X2,5	1	
24	00 0215 048 0	GRVD.BALL BEARING	6306-2RS*-C3	1	5)
24	00 0238 322 0	GRVD.BALL BEARING	6306-2RS* -30X72X19	1	6)
25	00 0668 168 1	V-BELT PULLEY	D170X31,5	1	
26	00 0668 167 0	BEARING BOLT	D26X91	1	
27	00 0668 166 1	BEARING BOLT	D35X31,6	1	
28	00 0239 411 0	COUNTERSUNK BOLT	M10X 50-MKL	1	
29	00 0668 169 0	LEVER	40X8X306,4	1	
30	00 0234 326 0	WASHER	11X26X3	1	
31	00 0239 388 0	CONTACT WASHER	A10-10,2X22,25X1,6	1	
32	00 0236 171 0	HEXAGONAL NUT	M10	1	
33	00 0632 133 0	PIN	B-10A12X28X4,5	1	
34	00 0235 089 0	SPLIT PIN	4 X 22	1	
35	00 0668 157 1	SUPPORT		1	
36	00 0237 382 0	HEXAGON HEAD BOLT	M10X20	2	
36	00 0236 171 0	HEXAGONAL NUT	M10	2	
36	00 0239 388 0	CONTACT WASHER	A10-10,2X22,25X1,6	2	
37	00 0724 103 1	SPRING GUIDE		1	
38	00 0673 665 0	BUSHING	30X34X6	1	
39	00 0661 302 1	THRUST COLLAR	D50 X12,5	1	
40	00 0629 579 0	COMPRESS.SPRING	5,6 X 36 X272	1	
41	00 0234 377 0	WASHER	13X40X6	1	
42	00 0236 172 0	HEXAGONAL NUT	M12	1	
43	00 0629 571 0	THREADED FORK		1	
44	00 0236 942 0	GREASE NIPPLE	A S6X1	1	
45	00 0239 071 0	WASHER	10,5X 60 X1	1	7)
46	00 0668 155 2	V-BELT PULLEY		1	8)

DRIVE GP-FAN

1) Remarks	from no. 46601131
2) Remarks	No. 46600488-46601130
3) Remarks	No. 46600397-46600487
4) Remarks	to No. 46600396
5) Remarks	from No. 46601637
6) Remarks	to No. 46601636
7) Remarks	from No. 46600398
8) Remarks	with Item 21 - 25 + 27

213

CLAAS



Lexion 480

111346

ROTARY SCREEN DRIVE

Pos.	Part No.	Description	Dimension	Quantity	Conditions
1	00 0668 189 5	TOOTH SHAFT	D26X845	1	
2	00 0233 503 0	COACH BOLT	M 8X 25	2	1)
2	00 0235 361 0	COACH BOLT	M 8X 55	2	2)
2	00 0236 170 0	HEXAGONAL NUT	M8	2	
2	00 0239 387 0	CONTACT WASHER	A8-8,2X18X1,4	2	
3	00 0234 283 0	WASHER	13 X 26 X2	2	1)
4	00 0233 577 0	WASHER	8,5X30X5	2	
5	00 0237 439 0	HEXAGON HEAD BOLT	M8X16	2	1)
5	00 0236 170 0	HEXAGONAL NUT	M8	2	1)
5	00 0239 387 0	CONTACT WASHER	A8-8,2X18X1,4	2	1)
6	00 0752 190 0	SUPPORT ANGLE	2,5X0104X0162	1	1)
7	00 0752 225 0	SPACER PIECE	D40XD13X33	2	2)
8	00 0667 561 1	V-BELT		1	
8	00 0146 902 0	V-BELT		1	
12	00 0213 823 0	THREADED PIN	M 6X0,75X6	2	
13	00 0235 555 0	HEXAGON HEAD BOLT	M12X55	1	
13	00 0236 172 0	HEXAGONAL NUT	M12	1	
13	00 0239 389 0	CONTACT WASHER	A12	1	
14	00 0904 088 0	BUSHING	12,8X20X12	1	
15	00 0667 456 0	V-BELT		1	
16	00 0236 172 0	HEXAGONAL NUT	M12	2	
17	00 0609 370 1	TIGHTENING PIECE	42X42X22	1	
18	00 0233 193 0	WASHER	12,2X30X3	1	
19	00 0817 748 0	COMPRESS.SPRING	3,5X17,5X50	1	
20	00 0668 185 0	SPACER SLEEVE	D30X46	1	
21	00 0668 152 0	EYE BOLT	AM12X420X170	1	
22	00 0211 045 1	LOCK NUT	M16X1,5	1	
23	00 0235 127 2	WASHER	16 - 17X30X3	1	
24	00 0668 193 0	V-BELT PULLEY	D149,2X60	1	
25	00 0244 816 0	WOODRUFF KEY	5 X 7,5 X 19	1	
26	00 0233 340 0	WASHER	17X26X3	1	
27	00 0619 287 1	ECCENTRIC LOCKING COLLAR	20	2	
28	00 0215 961 1	FLANGE BEARING	RCSMF 20 FA115	2	3)
29	00 0668 184 0	BEARING PLATE		1	4)
30	00 0656 870 0	MEGU BUSHING	D12XD30X28	3	
31	00 0235 555 0	HEXAGON HEAD BOLT	M12X55	1	
31	00 0236 172 0	HEXAGONAL NUT	M12	1	
31	00 0239 389 0	CONTACT WASHER	A12	1	
32	00 0244 820 0	SOCKET HEAD SCREW	M10X 20	4	
32	00 0236 171 0	HEXAGONAL NUT	M10	4	
32	00 0239 388 0	CONTACT WASHER	A10-10,2X22,25X1,6	4	
33	00 0235 561 0	HEXAGON HEAD BOLT	M12X85	1	
33	00 0236 172 0	HEXAGONAL NUT	M12	1	
33	00 0239 389 0	CONTACT WASHER	A12	1	
34	00 0752 194 0	SUPPORTING PLATE	3,0X0088X0174	1	1)
34	00 0668 183 3	BEARIN.PLAT.FRONT	3X103X162	1	2)
35	00 0238 312 0	BACK-UP WASHER	S 20X28	1	5)
36	00 0654 052 0	COMPRESS.SPRING		1	
37	00 0236 942 0	GREASE NIPPLE	A S6X1	1	
38	00 0752 293 1	COUPLER		1	6)
38	00 0668 188 2	COUPLER		1	5)
39	00 0239 021 0	SNAP RING	A 20	1	
40	00 0216 038 0	HEX. SOCKET CHEESE-HEAD SCREW	M 6X16-MKL	4	
41	00 0211 196 0	WASHER	6	4	

Thank you so much for reading.
Please click the “Buy Now!”
button below to download the
complete manual.



After you pay.

You can download the most
perfect and complete manual in
the world immediately.

Our support email:

ebooklibonline@outlook.com